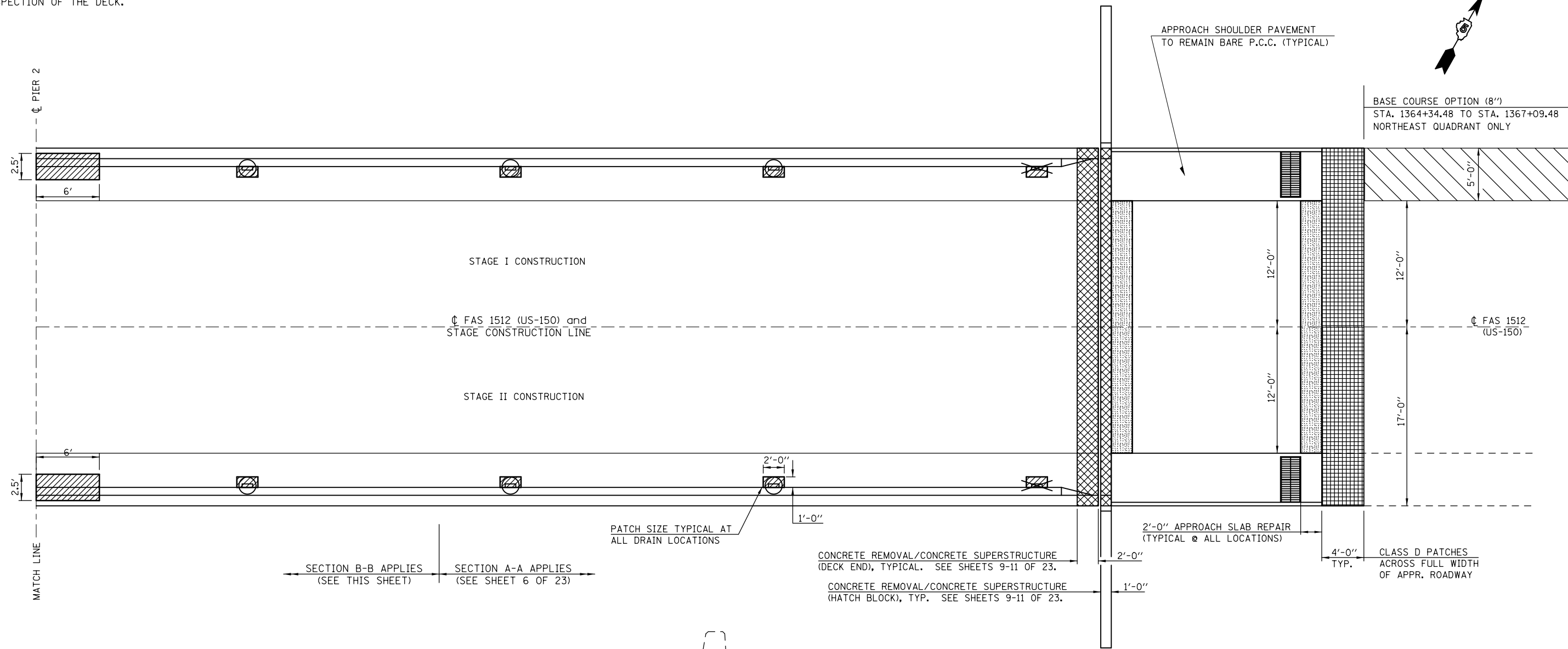
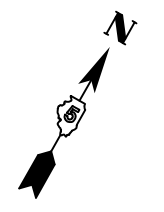


DECK SURVEY PERFORMED ON AUGUST 25, 2011. IF MORE THAN ONE WINTER FREEZE-THAW CYCLE OCCURS BETWEEN THE INITIAL INSPECTION AND THE COMMENCEMENT OF WORK, THE FINAL PLAN QUANTITIES FOR DECK REPAIRS MUST BE BASED ON A NEW INSPECTION OF THE DECK.

DECK SLAB AND APPROACH REPAIR PLAN SPAN 3 AND EAST APPROACH



SECTION B-B APPLIES (SEE THIS SHEET) SECTION A-A APPLIES (SEE SHEET 6 OF 23)

PATCH SIZE TYPICAL AT ALL DRAIN LOCATIONS

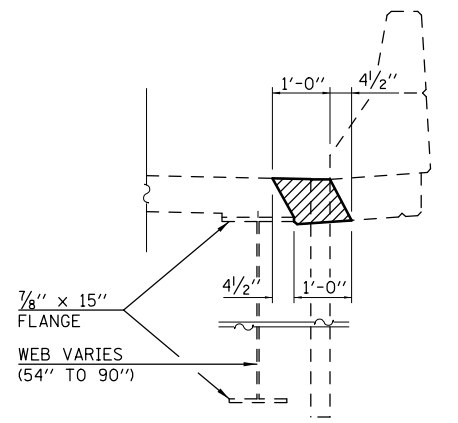
CONCRETE REMOVAL/CONCRETE SUPERSTRUCTURE (DECK END), TYPICAL. SEE SHEETS 9-11 OF 23.
CONCRETE REMOVAL/CONCRETE SUPERSTRUCTURE (HATCH BLOCK), TYP. SEE SHEETS 9-11 OF 23.

2'-0" APPROACH SLAB REPAIR (TYPICAL @ ALL LOCATIONS)

CLASS D PATCHES ACROSS FULL WIDTH OF APPR. ROADWAY

LEGEND

- BASE COURSE OPTION (8")
- ELIMINATE FLOOR DRAIN SEE SHEET 13 OF 23 FOR DETAILS ASSOCIATED WITH PROPOSED FLOOR DRAINS
- PROPOSED FLOOR DRAIN LOCATION
- DECK SLAB REPAIR (FULL DEPTH, TYPE I & TYPE II)
- CONCRETE REMOVAL AND CONCRETE SUPERSTRUCTURE
- APPROACH SLAB REPAIR, PARTIAL DEPTH
- CLASS D PATCHING, 12"



SECTION B-B
SHOWING REMOVAL LIMITS FOR DECK SLAB REPAIR (FULL-DEPTH, TYPE I) AT DRAIN LOCATIONS IN AREAS WITH 7/8" X 15" FLANGE.

NOTES

PATCH SIZES SHOWN REPRESENT CONDITIONS AT THE TIME THE PLANS WERE COMPLETED. THE ACTUAL SIZES AND LOCATIONS OF PATCHING SHALL BE DETERMINED BY THE ENGINEER. THE ENGINEER SHALL SHOW THE ACTUAL LOCATIONS OF THE DECK REPAIRS ON THIS SHEET.

THE EXISTING DECK DRAINS SHALL BE REMOVED. COST INCLUDED WITH "DECK SLAB REPAIR (FULL DEPTH, TYPE I)".

BILL OF MATERIALS (THIS SHEET)

| ITEM | UNIT | TOTAL |
|--------------------------------------|-------|-------|
| DECK SLAB REPAIR (FULL DEPTH, TY I) | SQ YD | 2.5 |
| DECK SLAB REPAIR (FULL DEPTH, TY II) | SQ YD | 4.0 |
| DECK SLAB REPAIR (PARTIAL) | SQ YD | 25.0 |
| APPROACH SLAB REPAIR (PARTIAL DEPTH) | SQ YD | 11.0 |