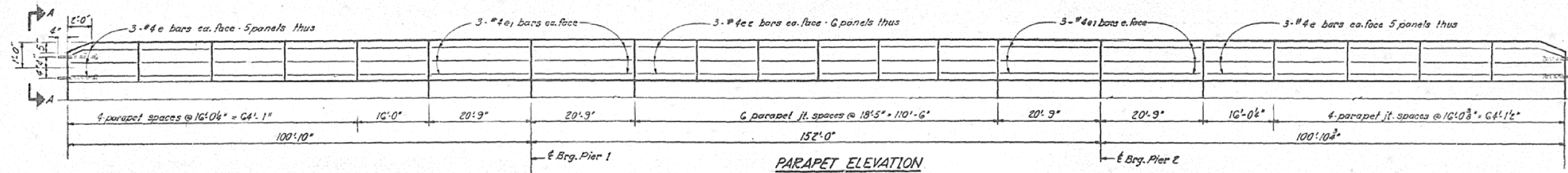


AS-BUILT PLANS FOR INFORMATION ONLY

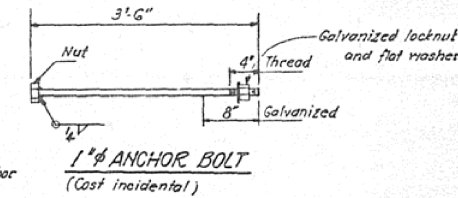
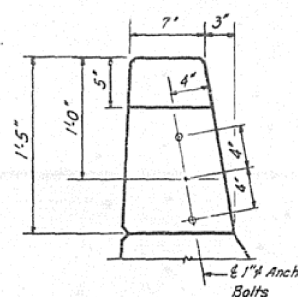
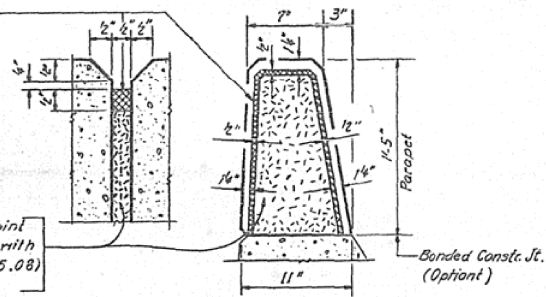
STATE OF ILLINOIS
DEPARTMENT OF TRANSPORTATION

SHEET NO.	SHEET NO.	SHEET NO.	SHEET NO.	SHEET NO.
11	11	11	11	11
SHEET NO. 6 13 SHEETS				



The component non-staining gray sealing compound with polysulfide liquid polymers gun grade with primer

1/2" Preformed Cork Joint Filler (In accordance with Articles 715.07 or 715.08) Cast incidental.



BILL OF MATERIAL

Bars	No.	Size	Length	Shape
c	110	#4	15'-0"	
c1	48	#4	20'-0"	
c2	72	#4	18'-2"	
Class X Concrete		Cu. Yds.	27.8	
Reinforcement Bars		Lbs.	2,710	

DESIGNED <i>R. M. Miller</i>	EXAMINED <i>March 5 1976</i>		
CHECKED <i>James Pierce</i>	APPROVED <i>Carl E. Hummer</i>		
DRAWN <i>Ann Holmbeck</i>			
CHECKED <i>JND</i>			

PARAPET
F.A.R.T. II SEC. 36 BR
VERMILION COUNTY
STA. 1362+32.35