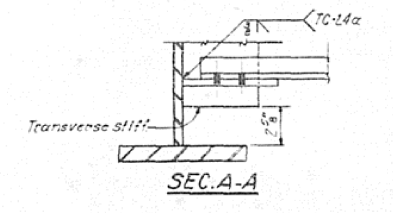
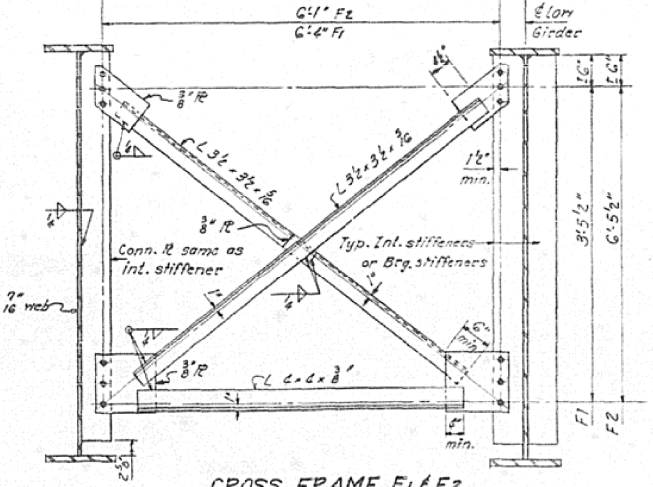
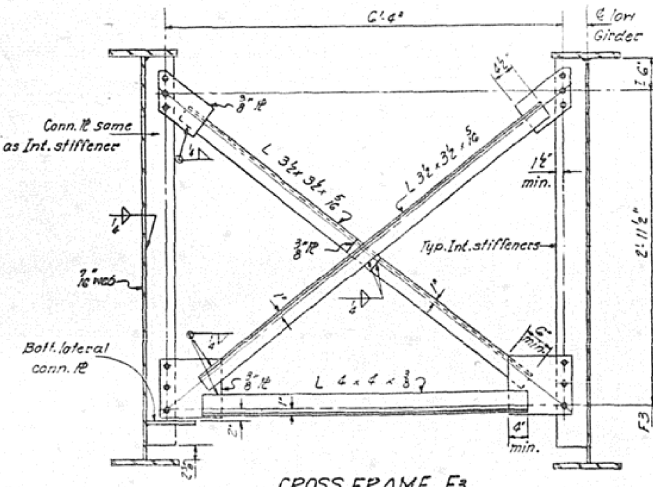
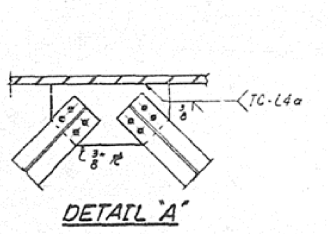
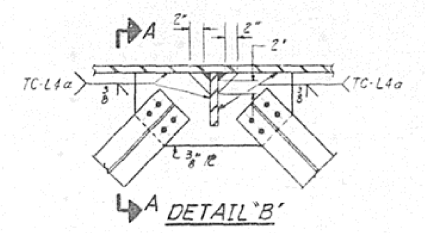
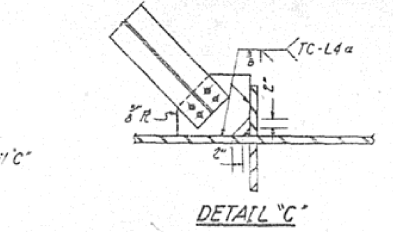
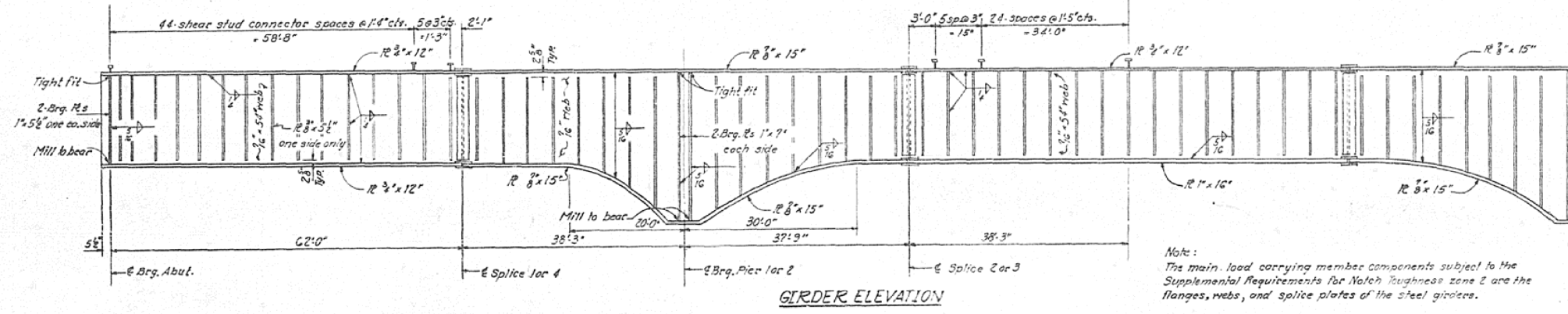
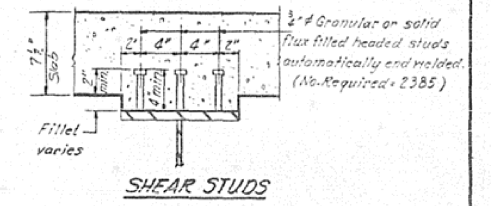
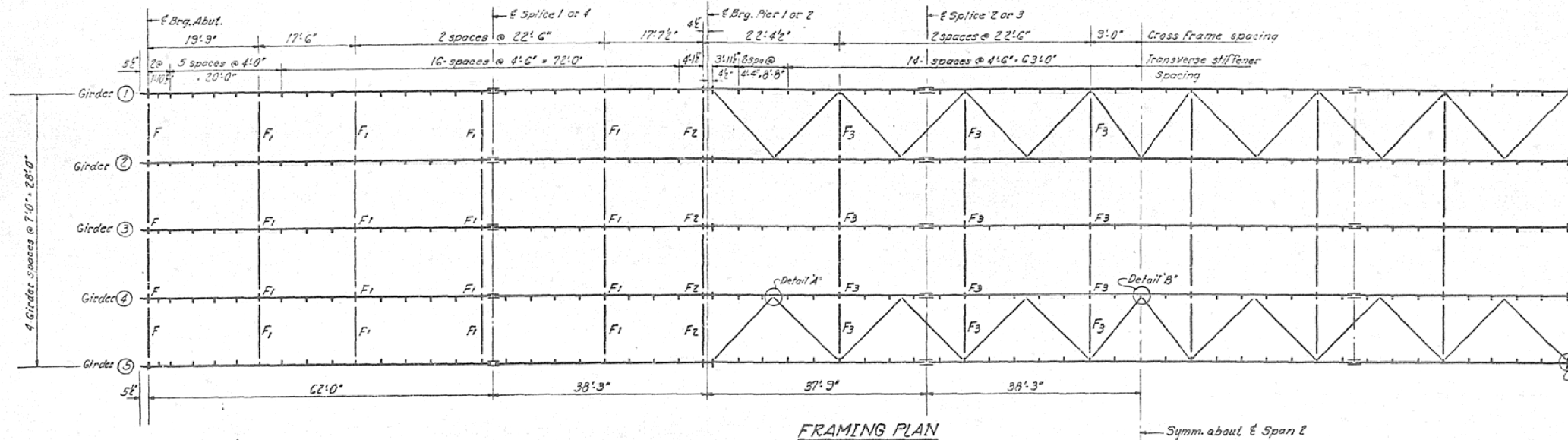


AS-BUILT PLANS FOR INFORMATION ONLY

STATE OF ILLINOIS
DEPARTMENT OF TRANSPORTATION

SECTION	COUNTY	TOTAL SHEETS	SHEET NO.
36BDR	VERMILION	23	12
13 SHEETS			



DESIGNED	ls wallace	EXAMINED	March 5 1976 Carl E. Thompson Jr. MEMBER OF SOCIETY
CHECKED	James Pule	PASSED	
DRAWN	Simon Krasicki	APPROVED	
CHECKED	JNV		

CROSS FRAME F3
Required: F3 - 24

CROSS FRAME F1 & F2
Required: F1 - 32
F2 - 8

Note:
Use 1/2" dia holes in gusset Rs for 3/4" bolts for Cross frames.
Hardened washers shall be required over holes in Cross Frame gusset Rs.

STRUCTURAL STEEL
F.A.R.T. II SEC. 36BDR
VERMILION COUNTY
STA. 1362+32.35