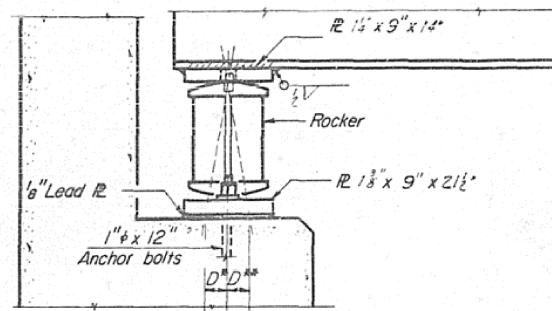


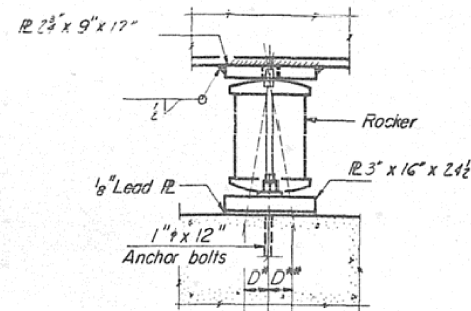
AS-BUILT PLANS FOR INFORMATION ONLY

STATE OF ILLINOIS

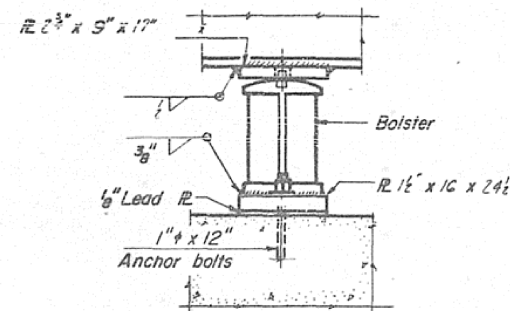
| | | | | |
|-----------|-----------|--------|--------------|-----------|
| ROUTE NO. | SECTION | COUNTY | TOTAL SHEETS | SHEET NO. |
| 36BR | VERMILION | IL | 15 | 10 |
| 13 SHEETS | | | | |



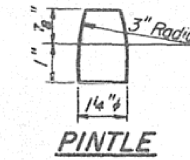
SECTION AT ABUTMENTS



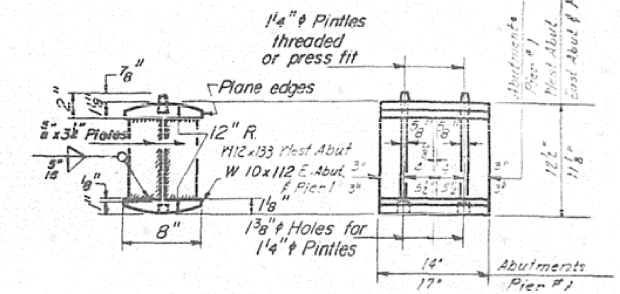
ELEVATION - PIER 1



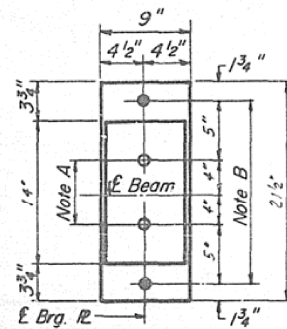
ELEVATION - PIER 2



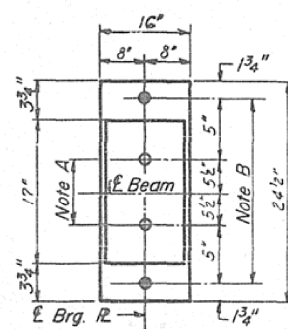
PINTLE



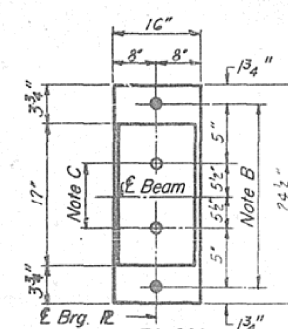
ROCKER



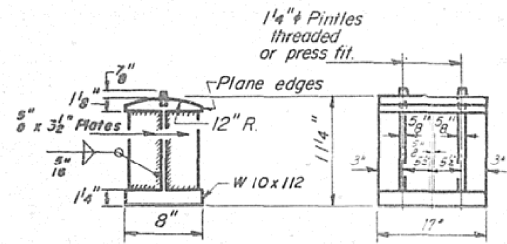
**PLAN
AT ABUTMENTS**



**PLAN
AT PIER # 1**



**PLAN
AT PIER # 2**



BOLSTER

NOTE A
1 3/8" Holes - 1" deep in top IR for pintles. Thread or press fit pintles into bottom IR.

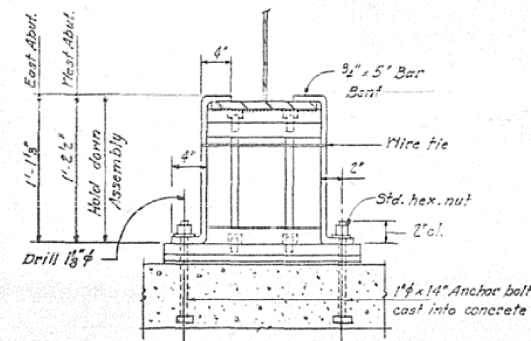
NOTE B
1 1/2" Holes for 1" anchor bolts. 16 x 2 1/2 x 2 1/2 IR. Washers under nut.

NOTE C
1 3/8" Holes 1" deep in top IR only for 1/4" pintles.

NOTES ON SETTING OF ANCHOR BOLTS AT EXP. BRGS.

- a) D* (Side of brg. away from fixed brg.)
D* = 1/8" per each 100' of expansion for every 15° fall below the normal temp. of 50°F.
- D** (Side of brg. toward fixed brg.)
D** = 1/8" per each 100' of expansion for every 15° rise above the normal temp. of 50°F.
- b) After beams have been erected and dimensions D* or D** determined, holes shall be drilled and anchor bolts shall be grouted in place. All fixed anchor bolts may be built into the masonry.

BEARING ASSEMBLY DETAILS



BEAM HOLD DOWN DETAIL

Note:
Beams shall be held down at the Abutment on the opposite end of Bridge from which the deck pour is commenced. After pouring is completed the Hold Down Assembly shall be removed and Nuts placed on Anchor Bolts.
Cost of Hold Down Assembly, incidental to Class X Concrete.

| | | | |
|----------|-----------------------|----------|--|
| DESIGNED | <i>R. J. Sullivan</i> | EXAMINED | <i>March 5 1976</i> <i>Paul E. Thompson</i> |
| CHECKED | <i>James Hance</i> | PASSED | |
| DRAWN | <i>P.G. Barnett</i> | APPROVED | |
| CHECKED | <i>JWP</i> | | |

I-2-B 9-1-65, 8-1-70

STRUCTURAL STEEL-DETAILS
PART II SEC. 36 BR
VERMILION COUNTY
STA. 1362+32.35

| | | | | | | | | | | | | | |
|--|--------------------------------|------------------|-----------|---|--|---------------------------|------|-------------|---------|--------|--------------|-----------|----|
| FILE NAME = | USER NAME = ceorlockjd | DESIGNED - GMS | REVISED - | STATE OF ILLINOIS DEPARTMENT OF TRANSPORTATION | AS-BUILT PLANS FOR INFORMATION ONLY | | | F.A.S. RTE. | SECTION | COUNTY | TOTAL SHEETS | SHEET NO. | |
| ce:\pw\work\p\dot\ceorlockjd\0280772\B | Bridge Repairs SN 092-0050.dgn | DRAWN - GMS | REVISED - | | SCALE: | SHEET NO. 24 OF 25 SHEETS | STA. | TO STA. | 1512 | 36BDR | VERMILION | 34 | 29 |
| | PLOT SCALE = 40.0000 / in. | CHECKED - | REVISED - | | CONTRACT NO. 70965 | | | | | | | | |
| | PLOT DATE = 2/25/2013 | DATE - 2-21-2012 | REVISED - | | ILLINOIS FED. AID PROJECT | | | | | | | | |