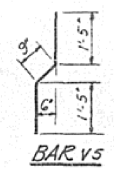
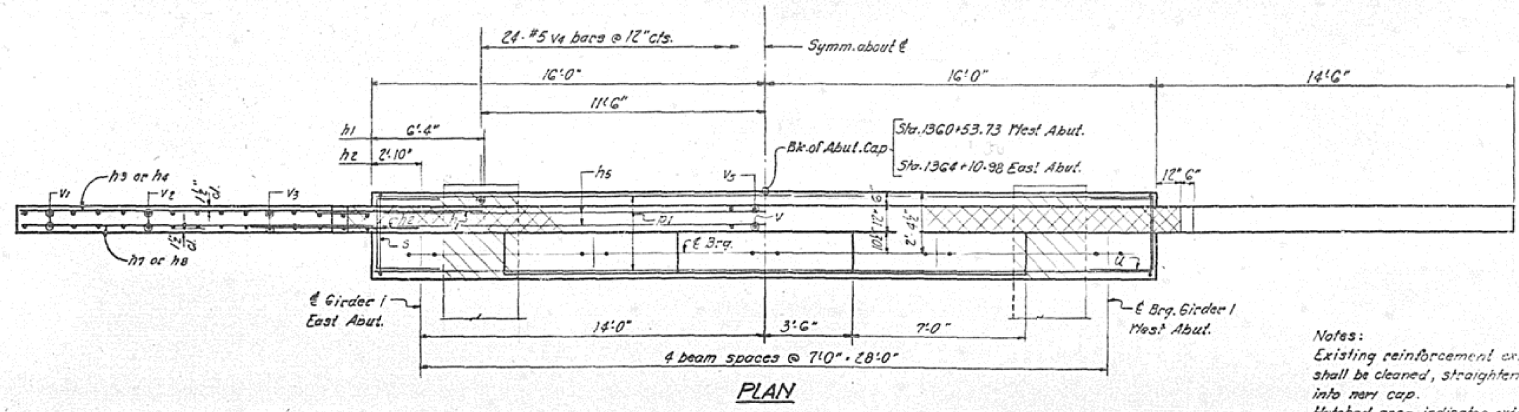
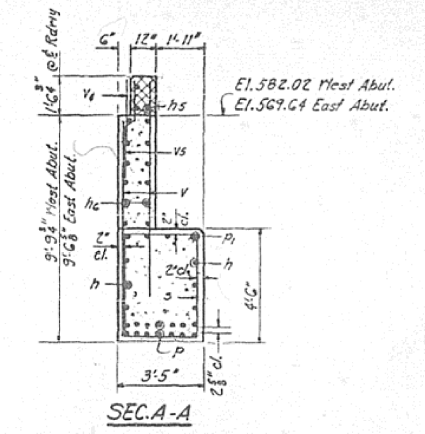
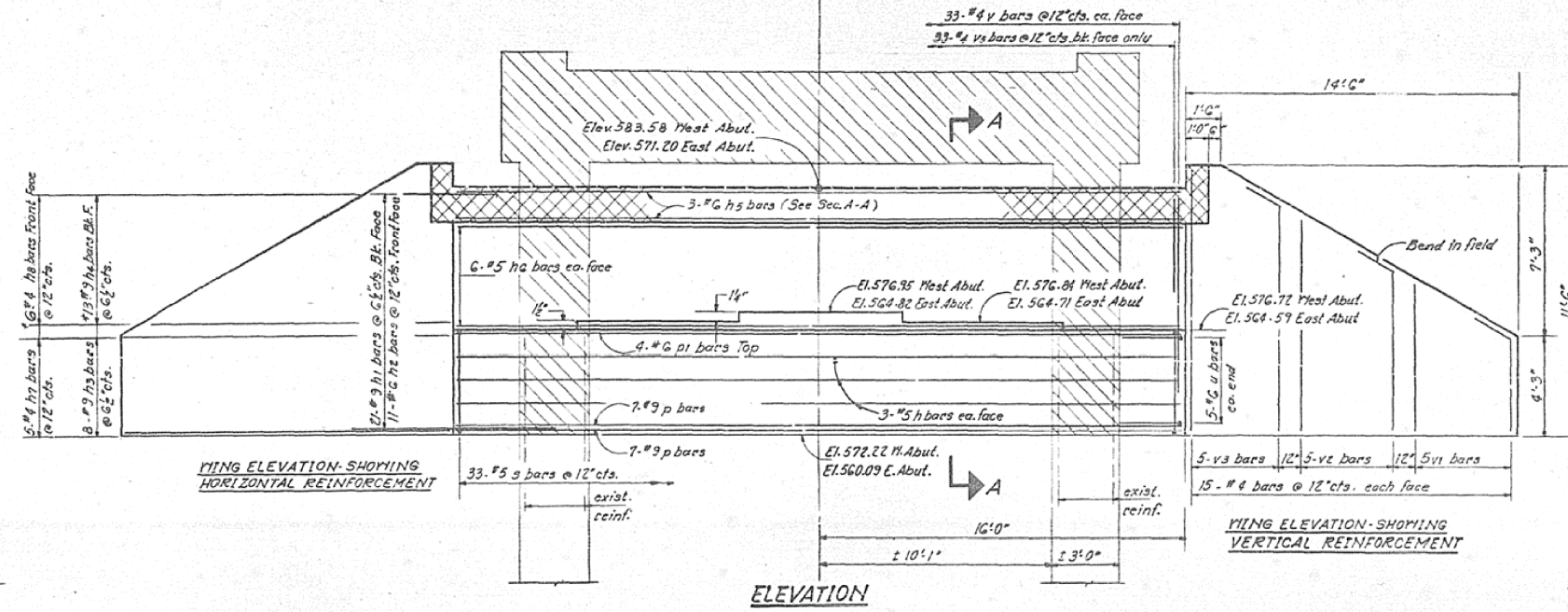
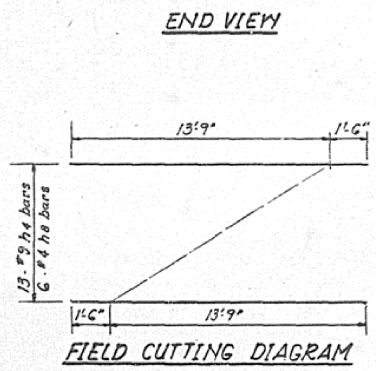
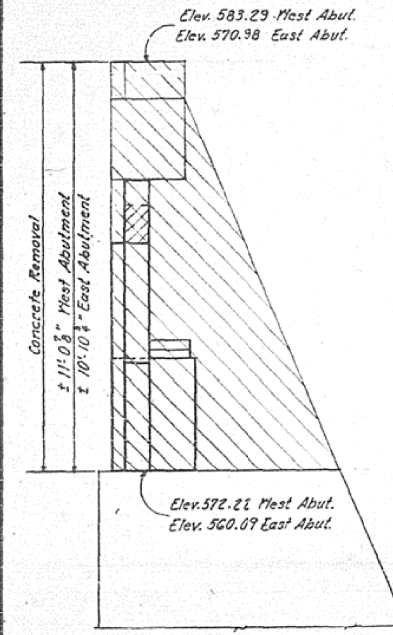


AS-BUILT PLANS FOR INFORMATION ONLY

STATE OF ILLINOIS
DEPARTMENT OF TRANSPORTATION

ROUTE NO.	SECTION	COUNTY	TOTAL SHEETS	SHEET NO.
1512	36BR	VERMILION	34	30
3 SHEETS				



**TWO ABUTMENTS
BILL OF MATERIAL**

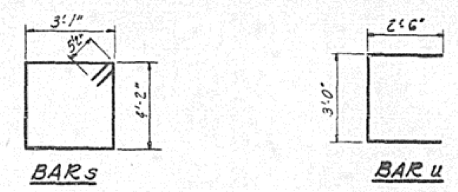
Bar	No.	Size	Length	Shape
h	12	#5	31'-9"	
h1	84	#9	12'-8"	
h2	44	#6	5'-8"	
h3	32	#9	14'-3"	
h4	26	#9	15'-3"	
h5	6	#6	31'-9"	
h6	24	#5	31'-9"	
h7	20	#4	14'-3"	
h8	12	#4	15'-3"	
v	28	#9	31'-9"	
v1	8	#6	31'-9"	
s	66	#5	15'-5"	
u	20	#6	8'-0"	
v	132	#4	9'-3"	
v1	40	#4	6'-3"	
v2	40	#4	8'-9"	
v3	40	#4	11'-3"	
v4	48	#5	7'-6"	
v5	66	#4	3'-7"	
Concrete Removal		Cu. Yds.	37	
Class X Concrete		Cu. Yds.	72.8	
Reinforcement Bars		Lbs.	15,170	

Notes:
Existing reinforcement extending into new concrete shall be cleaned, straightened and incorporated into new cap.
Hatched area indicates extent of concrete removal.
Cross-hatched area shall be poured after superstructure forms have been removed and be filled with superstructure concrete.

DESIGNED: R. Mathews
CHECKED: James Hunt
DRAWN: Lisa Mathews
CHECKED: JND

EXAMINED: Carl L. Hummer
PASSED:
APPROVED:

March 5 2016



**ABUTMENTS
F.A.R. II SEC. 36 BR
VERMILION COUNTY
STA. 1362+32.35**