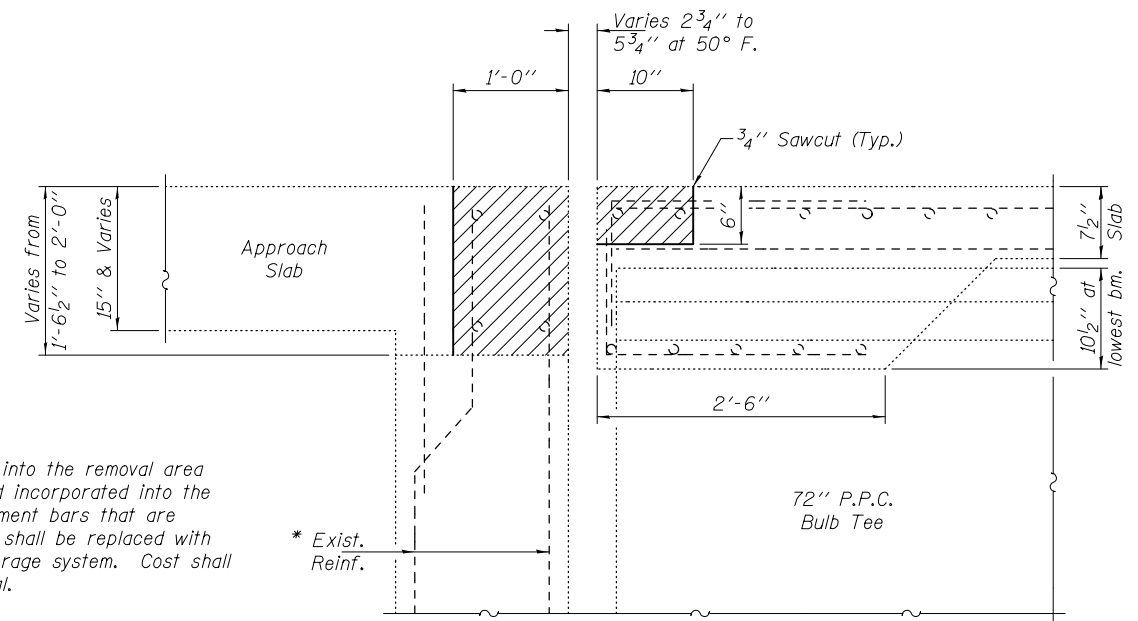


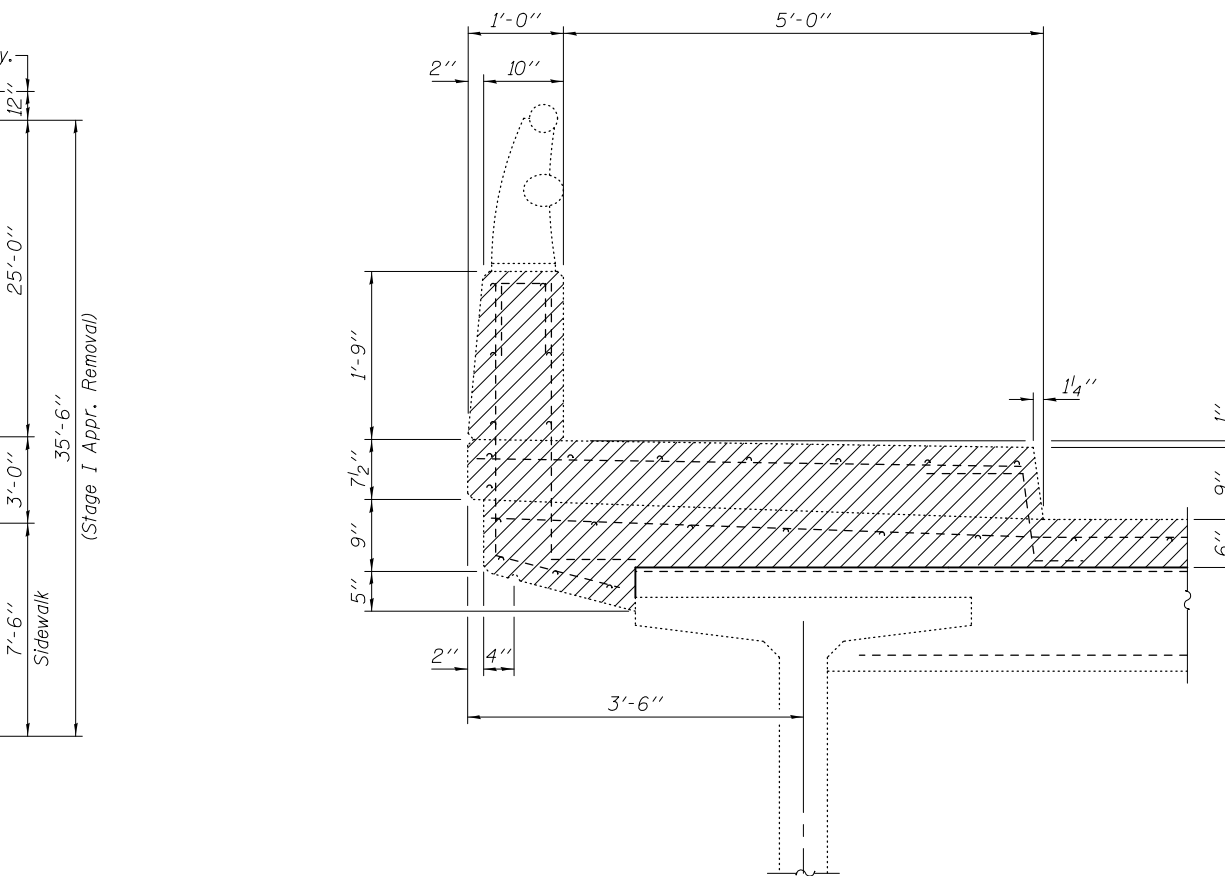
**REMOVAL PLAN**



**SECTION A-A**

\* Existing reinforcement extending into the removal area shall be cleaned, straightened and incorporated into the new construction. Any reinforcement bars that are damaged during concrete removal shall be replaced with an approved bar splicer or anchorage system. Cost shall be included with Concrete Removal.

Note:  
For Section B-B see sheet 5 of 8.  
For Sections C-C & D-D see sheet 6 of 8.



**SECTION THRU SIDEWALK**

- Hatched areas indicate Concrete Removal  
 - Cross-Hatched areas indicate Approach Slab Repair (Full Depth)

DESIGNED ADY	EXAMINED <i>Timothy A. [Signature]</i>	DATE JANUARY 17, 2014
CHECKED ARS	PASSED <i>[Signature]</i>	REVISED
DRAWN Kyle M. Steffen	ACTING ENGINEER OF BRIDGES AND STRUCTURES	REVISED
CHECKED ADY ARS		

**STATE OF ILLINOIS  
DEPARTMENT OF TRANSPORTATION**

**CONCRETE REMOVAL DETAILS  
SN 092-0053**

F.A.P. RTE. 729	SECTION (34Z-1B)I-2	COUNTY VERMILION	TOTAL SHEETS 25	SHEET NO. 8
CONTRACT NO. 70971				

SHEET NO. 3 OF 8 SHEETS

ILLINOIS FED. AID PROJECT