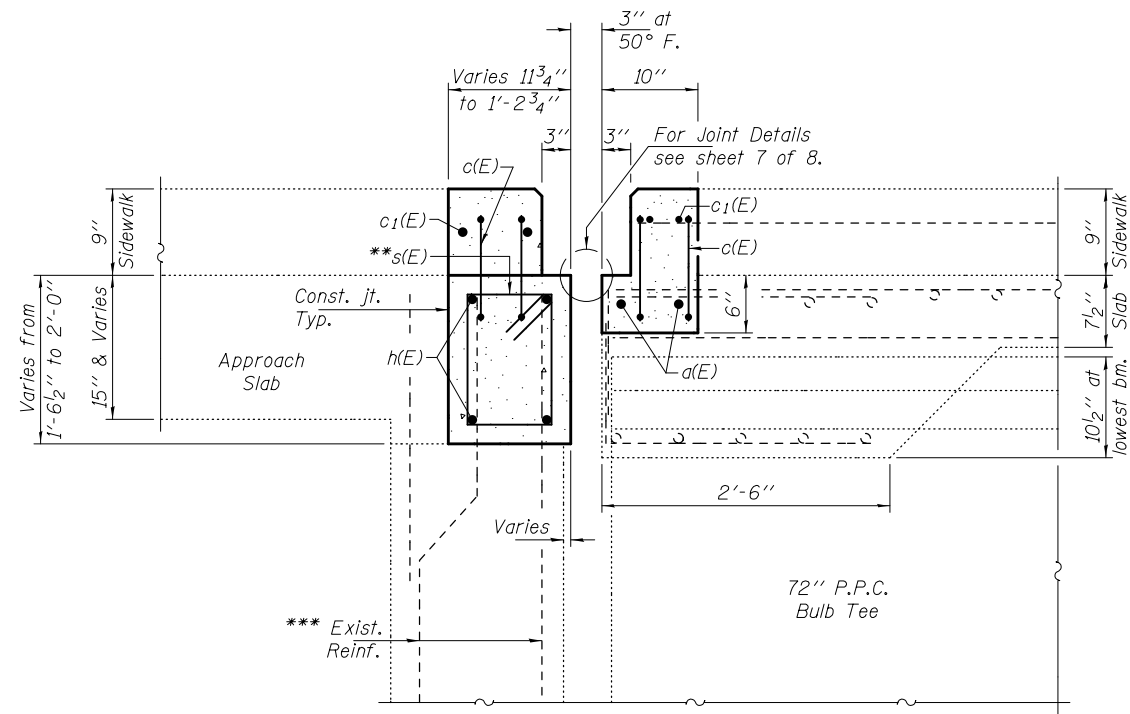


SECTION B-B

- Hatched areas indicate Concrete Removal

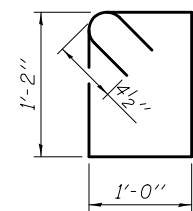


SECTION F-F

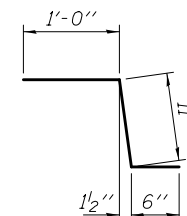
Sliding Plates on sidewalk not shown for clarity. See details on sheet 7 of 8.

** Tilt #5 s(E) bars as req'd to maintain clearance.

*** Existing reinforcement extending into the removal area shall be cleaned, straightened and incorporated into the new construction. Any reinforcement bars that are damaged during concrete removal shall be replaced with an approved bar splicer or anchorage system. Cost shall be included with Concrete Removal.



BAR s(E)



BAR c(E)

BILL OF MATERIAL (BRIDGE)

Bar	No.	Size	Length	Shape
a(E)	4	#7	35'-7"	—
a ₁ (E)	4	#7	33'-7"	—
c(E)	16	#5	2'-5"	⌒
c ₁ (E)	16	#5	5'-8"	—
h(E)	8	#6	35'-7"	—
h ₁ (E)	8	#6	33'-7"	—
s(E)	138	#5	5'-1"	⊞
Concrete Removal			Cu. Yd.	13.2
Concrete Superstructure			Cu. Yd.	13.6
Bar Splicers			Each	12
Reinforcement Bars, Epoxy Coated			Pounds	2270

DESIGNED ADY	EXAMINED	DATE JANUARY 17, 2014
CHECKED ARS	PASSED	REVISED
DRAWN Kyle M. Steffen	ACTING ENGINEER OF BRIDGES AND STRUCTURES	REVISED
CHECKED ADY ARS	ACTING ENGINEER OF STRUCTURAL SERVICES	

**STATE OF ILLINOIS
DEPARTMENT OF TRANSPORTATION**

**REPAIR DETAILS
SN 092-0053**

SHEET NO. 5 OF 8 SHEETS

F.A.P. RTE. 729	SECTION (342-1B)I-2	COUNTY VERMILION	TOTAL SHEETS 25	SHEET NO. 10
CONTRACT NO. 70971			ILLINOIS FED. AID PROJECT	