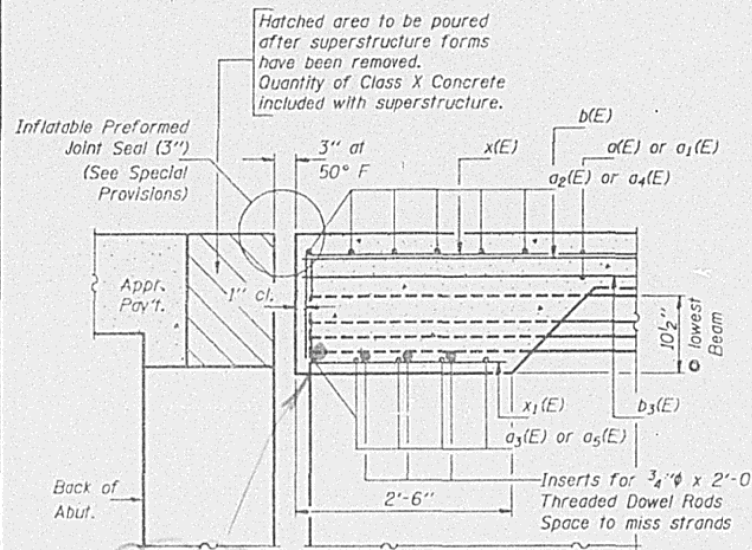


STATE OF ILLINOIS  
DEPARTMENT OF TRANSPORTATION

ROUTE NO.	SECTION	COUNTY	STA.	SHEET NO.
F.A.P. 729	(34Z-D) BR	VERMILION	64	57
33 SHEETS				

TYPICAL - ALL BEAMS - ALL SPANS:  
#5 BENT BARS USED AS STIRRUPS WHERE FILLETS EXCEED 3"



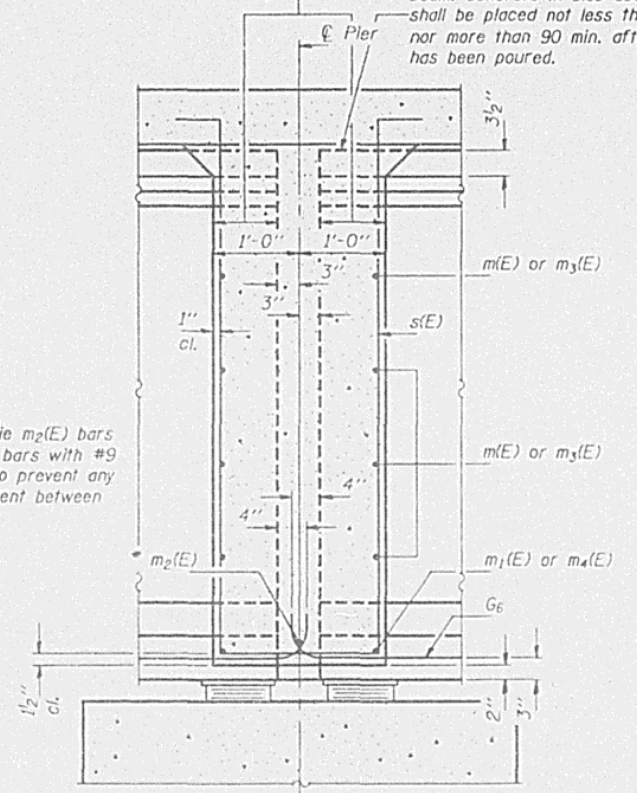
SECTION A-A

Roofing Felt shall be Bonded to side of beams embedded into Diaphragm. Cost Incidental

Pour diaphragm flush with Top of beam. Concrete in slab above this line shall be placed not less than 45 min. nor more than 90 min. after diaphragm has been poured.

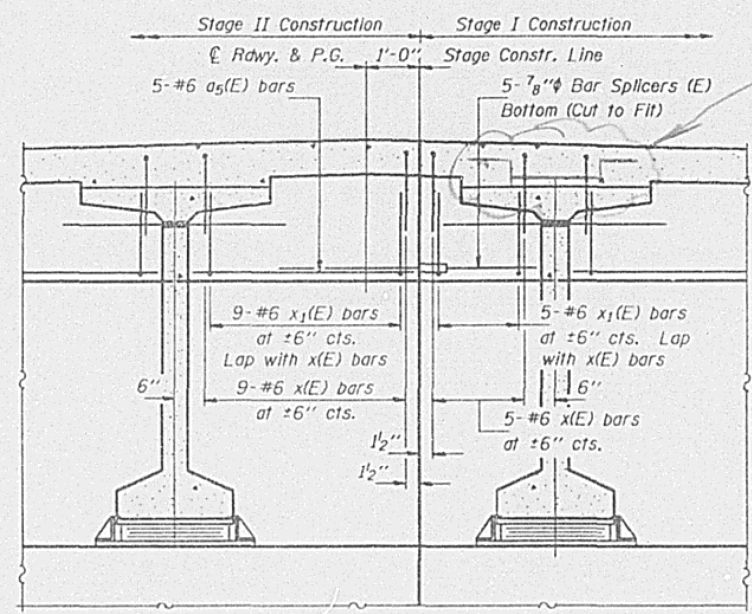
ADDITIONAL #3(E) BAR

\* Tie m2(E) bars to G6 bars with #9 wire to prevent any movement between bars.

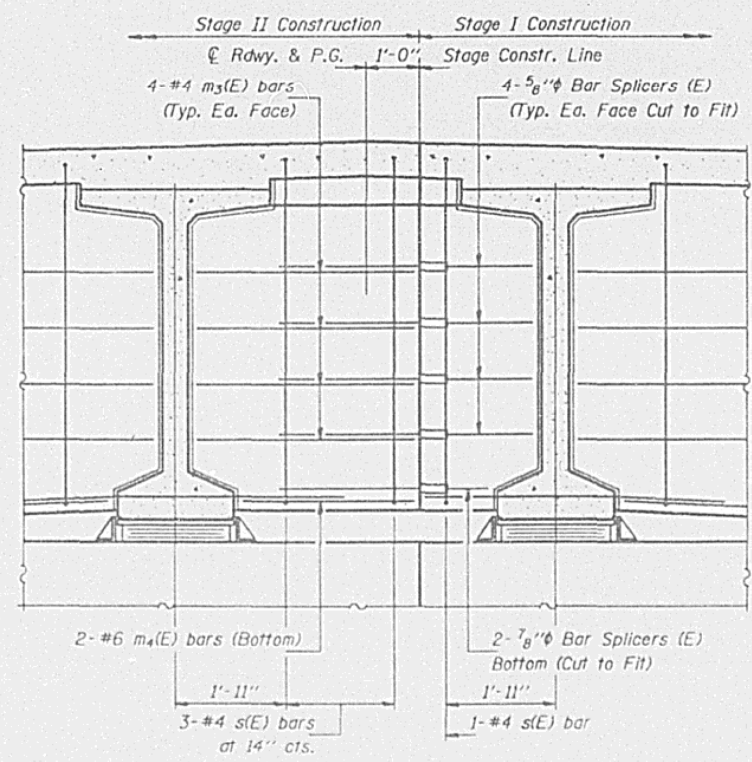


SECTION B-B

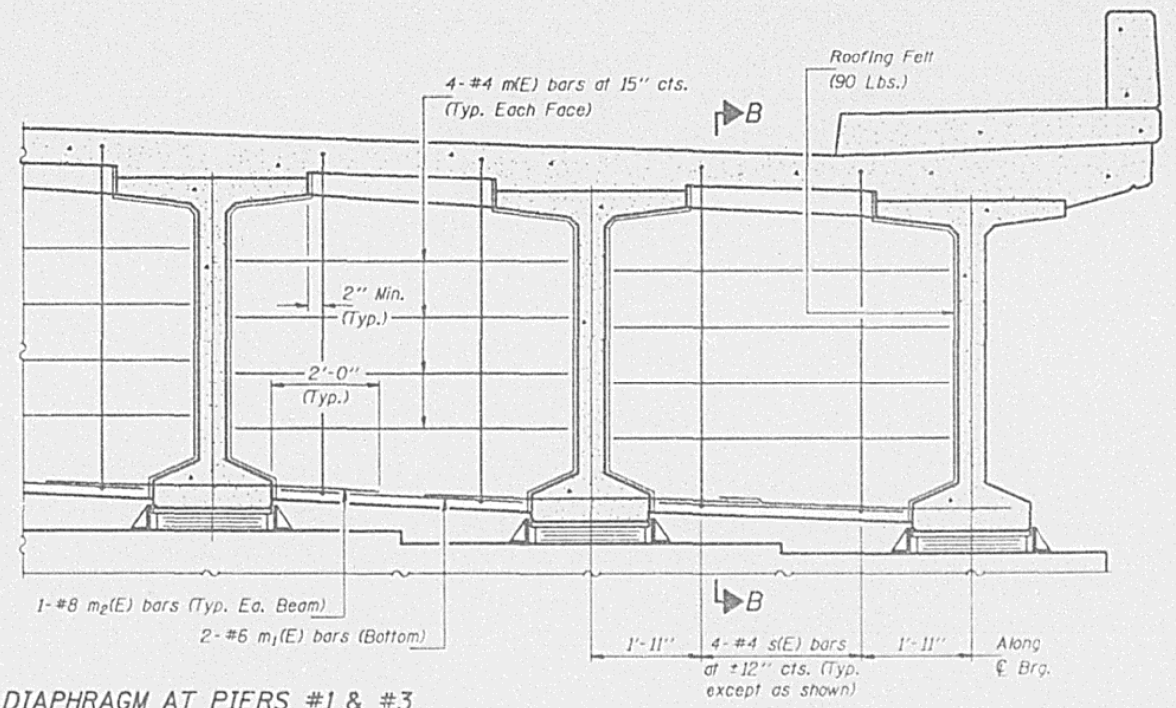
Notes: Reinforcement bars shown on this sheet are included in Bill of Material on sheet #11 of 33.  
Class X Concrete in Diaphragms is included with "Class X Concrete Superstructure" on sheet #11 of 33.  
For Inflatable Preformed Joint Details see sheet #11 of 33.  
For details of s(E), x(E) and x1(E) bars see sheet #11 of 33.  
For Bar Splicer details see sheet #5 of 33.



DIAPHRAGM AT ABUTMENTS



DIAPHRAGM AT PIERS #1 & #3



DIAPHRAGM DETAILS  
F.A.P. RT. 729 SEC. (34Z-D) BR  
VERMILION COUNTY  
STA. 616+30.50

DESIGNED	Feb 18 1993
CHECKED	
DRAWN	
CHECKED	