

STATE OF ILLINOIS
DEPARTMENT OF TRANSPORTATION
DIVISION OF HIGHWAYS

**PROPOSED
HIGHWAY PLANS**

FAP ROUTE 71 (IL 54)
SECTION (122,121)I
PROJECT ACHSIP-0071 (060)
MILLED RUMBLE STRIP
DEWITT/MCLEAN COUNTY

F.A.P. RTE.	SECTION	COUNTY	TOTAL SHEETS	SHEET NO.
71	(122, 121) I	ILLINOIS	199	1
CONTRACT NO. 70984				

* DEWITT / MCLEAN

D-95-031-12



FOR INDEX OF SHEETS, SEE SHEET NO. 2

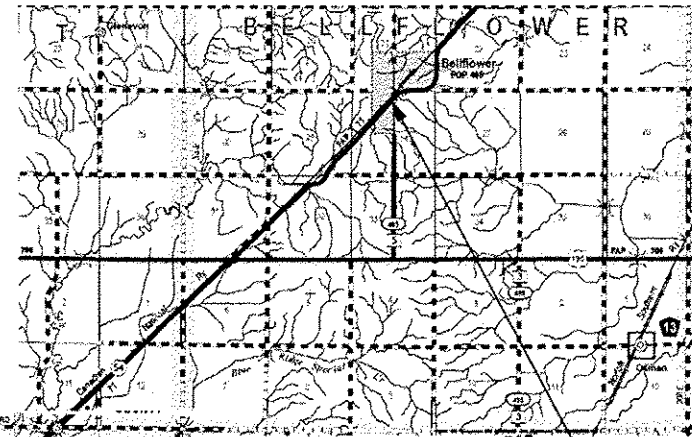
STATION EQUATIONS

STA. 802+43.44 (BK) = STA. 78+00.00 (AH)
STA. 130+69.53 (BK) = STA. 131+02.31 (AH)
STA. 152+63.80 (BK) = STA. 152+58.60 (AH)
STA. 349+93.56 (BK) = STA. 349+92.21 (AH)
STA. 389+63.41 (BK) = STA. 390+79.19 (AH)

CURRENT ADT (2012)
950 MIN / 1,250 MAX

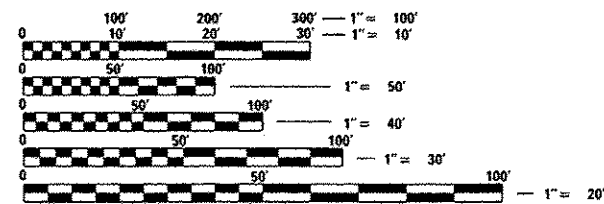
DESIGN DESIGNATION
MINOR ARTERIAL

C-95-031-12
BELLFLOWER TO FARMER CITY



PROJECT BEGINS
STATION 753+75.1

PROJECT ENDS
STATION 442+51.7



FULL SIZE PLANS HAVE BEEN PREPARED USING STANDARD ENGINEERING SCALES. REDUCED SIZED PLANS WILL NOT CONFORM TO STANDARD SCALES. IN MAKING MEASUREMENTS ON REDUCED PLANS, THE ABOVE SCALES MAY BE USED.

J.U.L.I.E.
JOINT UTILITY LOCATION INFORMATION FOR EXCAVATION
TOWNSHIPS: SANTA ANNA (DEWITT CO.)
BELLFLOWER (MCLEAN CO.)
1-800-892-0123
OR 811

PROJECT ENGINEER: JASON STULTS (217) 465-4181
DESIGN SQUAD LEADER: RUSTIN KEYS
DESIGNER: BRIAN CASTRO
CONTRACT NO. 70984



GROSS LENGTH = 41,659.20 FT. = 7.890 MILE
NET LENGTH = 41,659.20 FT. = 7.890 MILE

STATE OF ILLINOIS
DEPARTMENT OF TRANSPORTATION
DIVISION OF HIGHWAYS
SUBMITTED DECEMBER 6, 2013
Joseph F. Crowe
DEPUTY DIRECTOR OF HIGHWAYS, REGION ENGINEER CAE
Jan 24 2014
John D. Baranzelle, P.E., C.E.
ENGINEER OF DESIGN AND ENVIRONMENT
Jan 24 2014
Omer Osman, P.E., C.E.
DIRECTOR OF HIGHWAYS, CHIEF ENGINEER

PRINTED BY THE AUTHORITY
OF THE STATE OF ILLINOIS