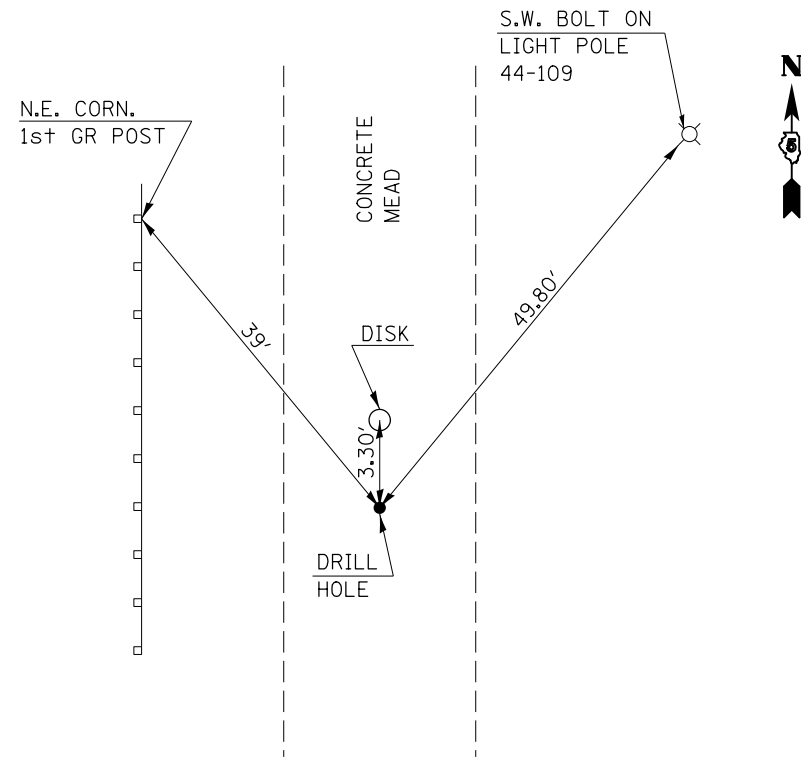
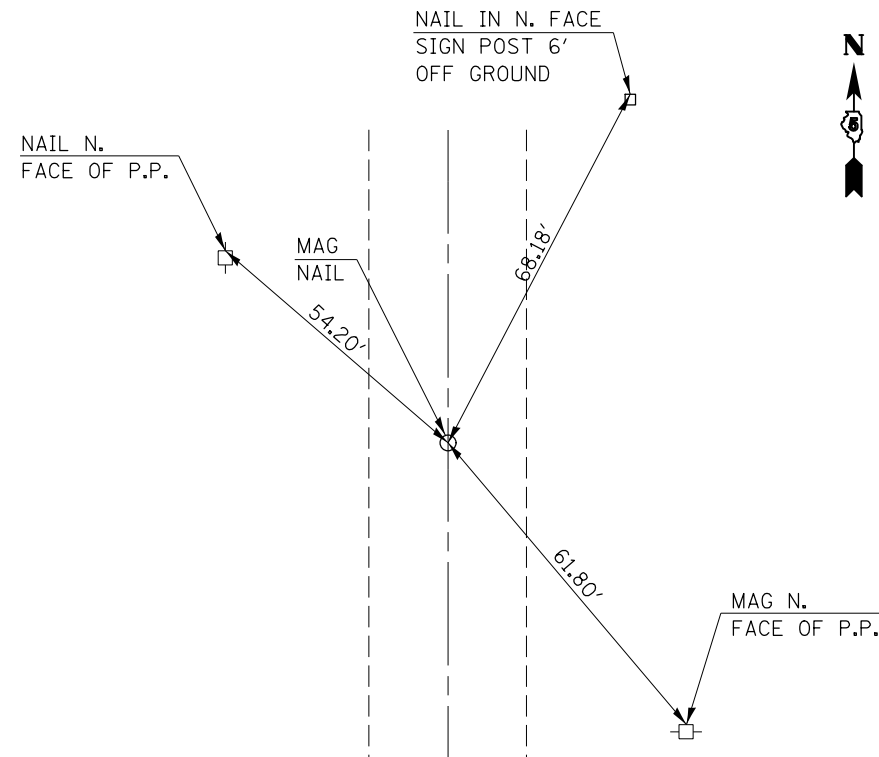


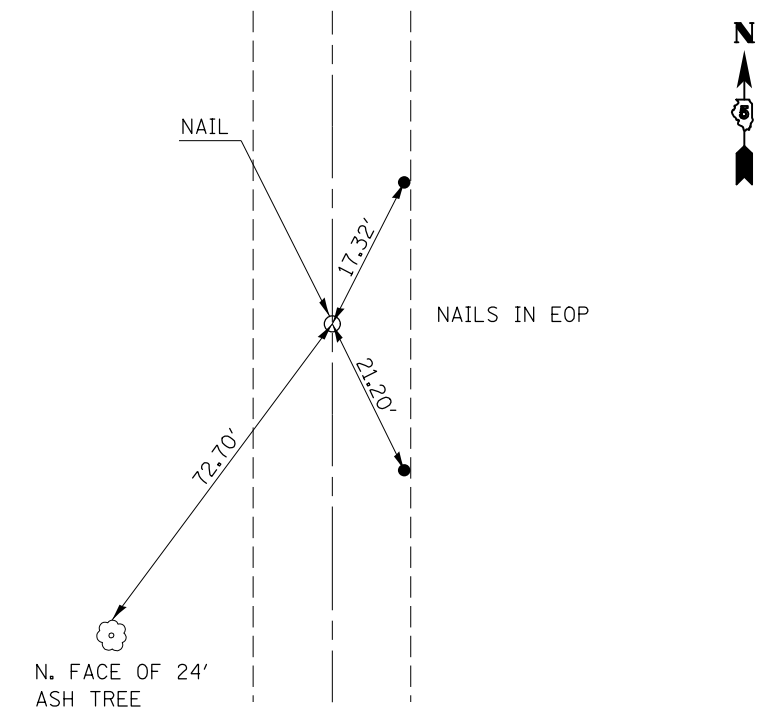
P.T. 1739 + 41.809



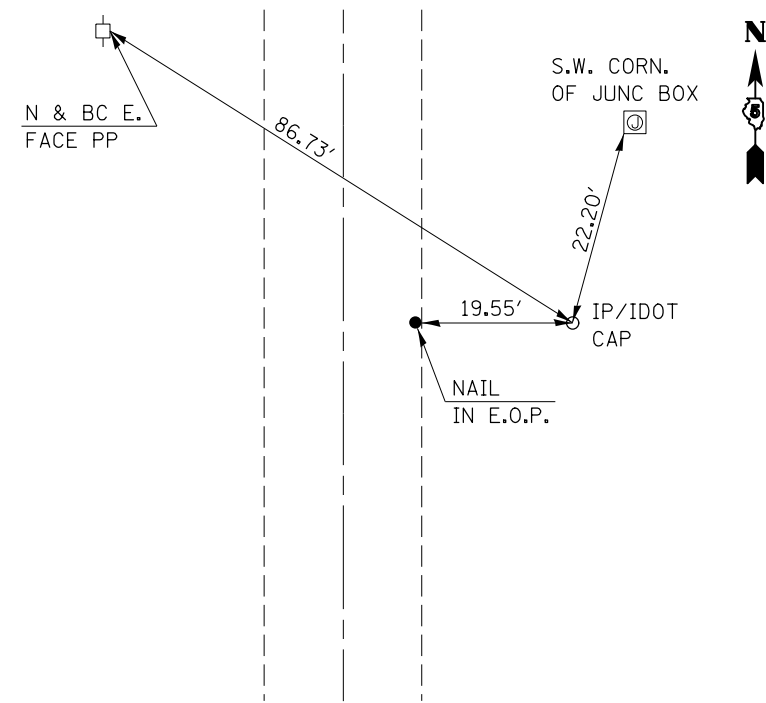
ST EQ #72 1753 + 53.76 BK = 753 + 53.76 AH



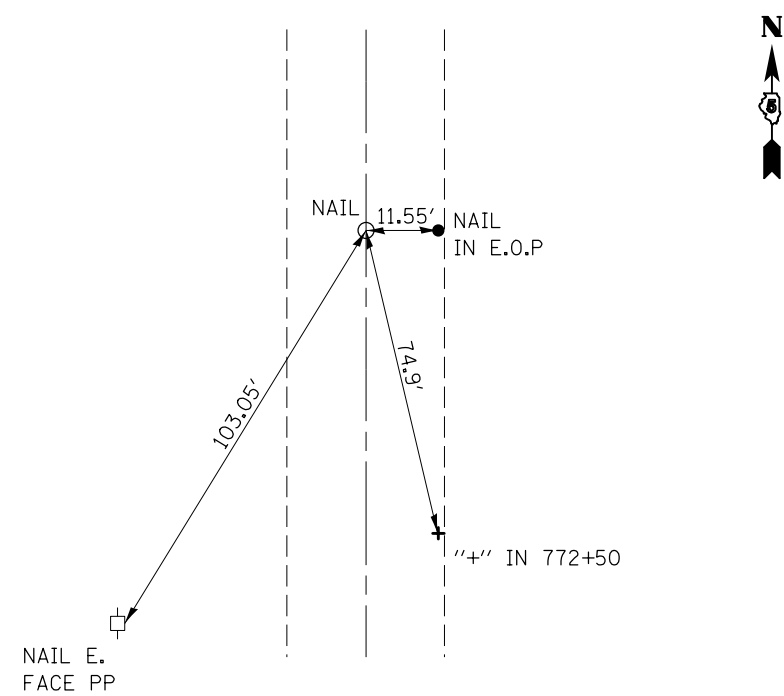
P.C. 763 + 01.082



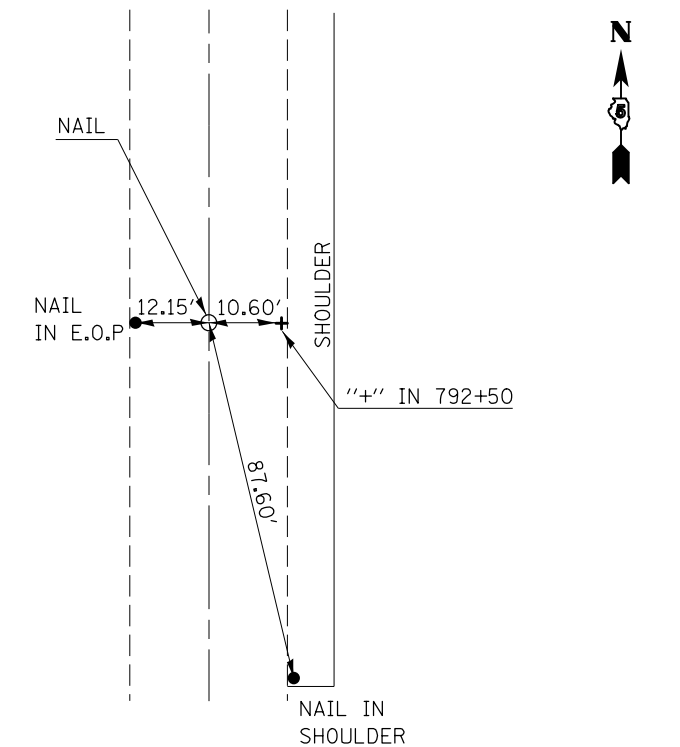
P.I. #70



P.T. 773 + 19.891



P.C. 792 + 51.074



FILE NAME =	USER NAME = castrub	DESIGNED -	REVISED -
c:\pw\work\p1dot\castrub\d0313174\057084-sh1-ATB.dgn		DRAWN -	REVISED -
	PLOT SCALE = 40.0000' / in.	CHECKED -	REVISED -
\$MODELNAME\$	PLOT DATE = 1/3/2014	DATE - 08/27/13	REVISED -

**STATE OF ILLINOIS
DEPARTMENT OF TRANSPORTATION**

**TIE POINTS
AND BENCHMARKS**

SCALE: N/A SHEET 1 OF 5 SHEETS STA. TO STA.

F.A.P. RTE.	SECTION	COUNTY	TOTAL SHEETS	SHEET NO.
71	(122,121)I		199	13
• DEWITT / MCLEAN			CONTRACT NO. 70984	
ILLINOIS FED. AID PROJECT				