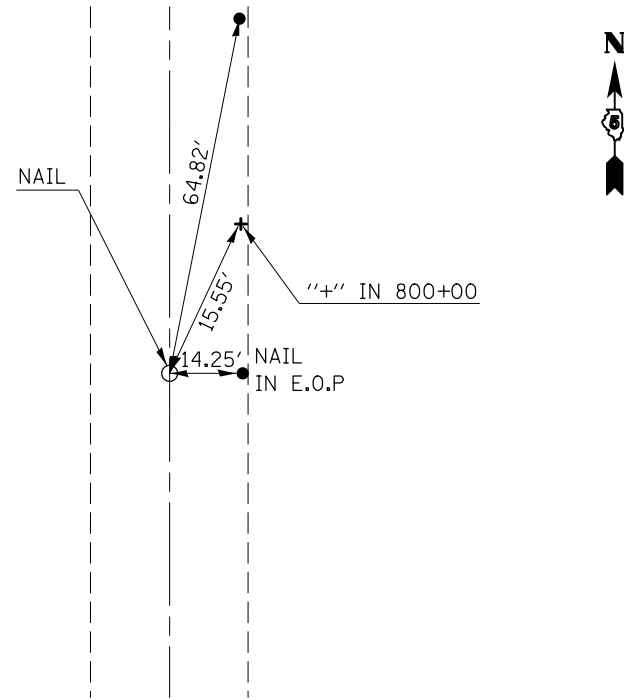
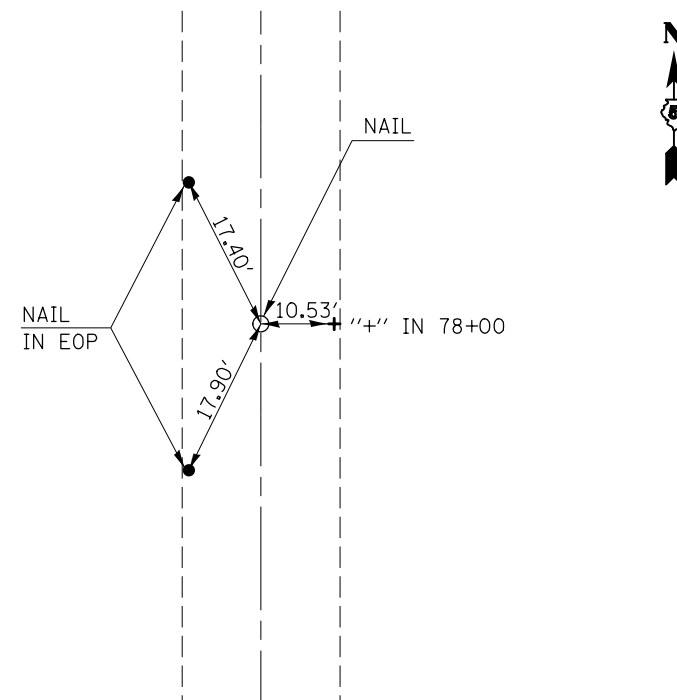


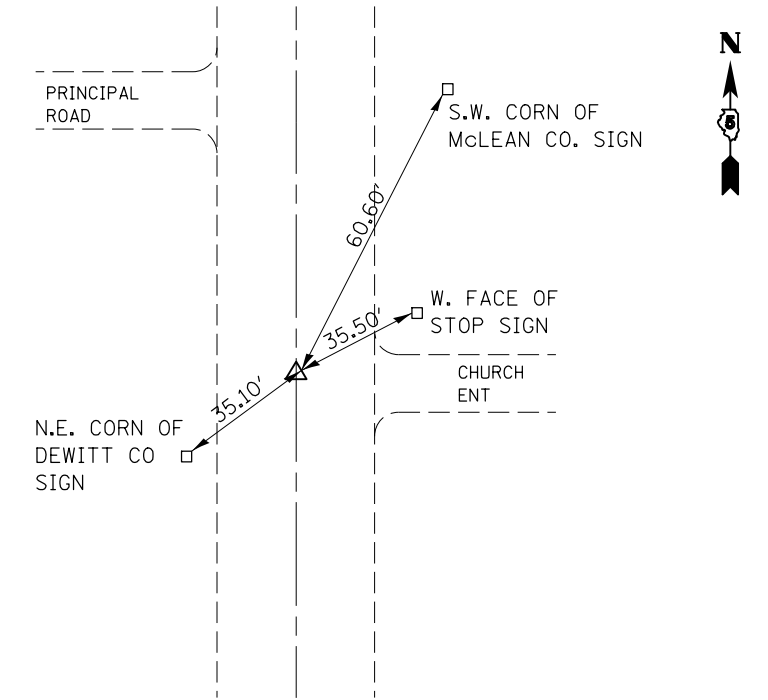
P.T. 799 + 93.314



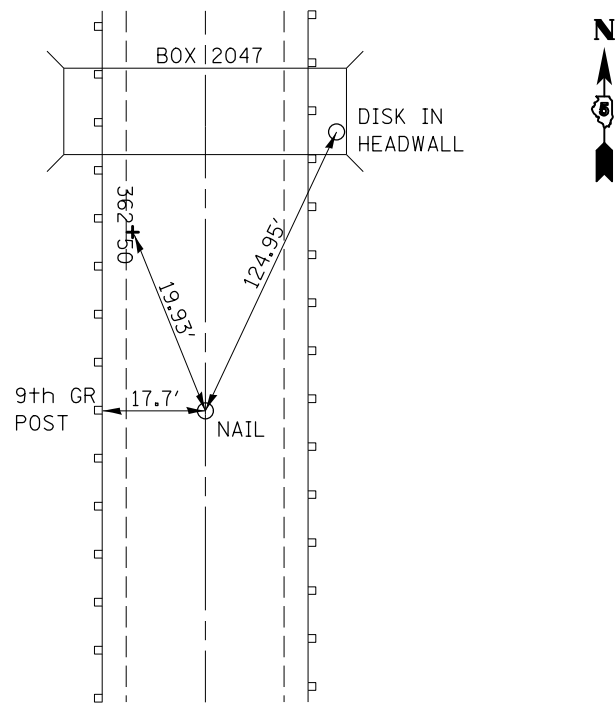
**STA. EQU.: 802 + 43.439 BK = 78 + 00 AH
#77 & #78**



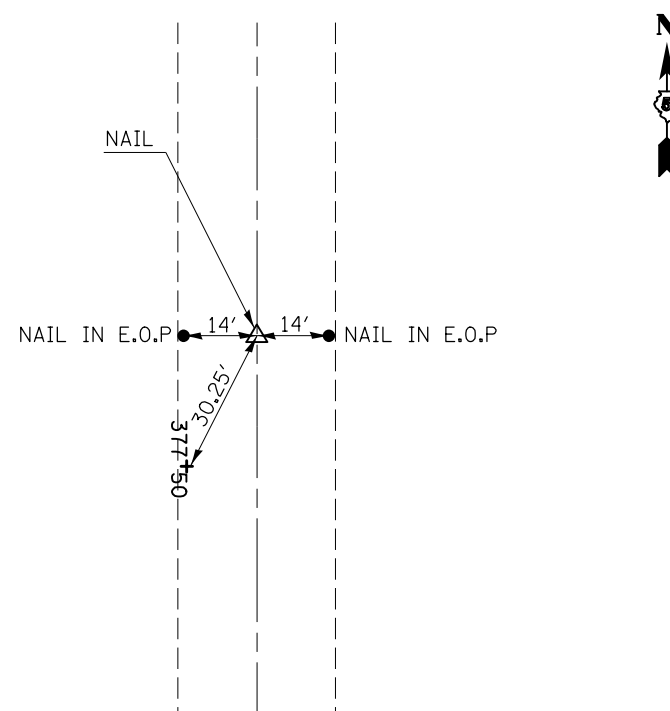
P.I. 9 144 + 95.35 DISK



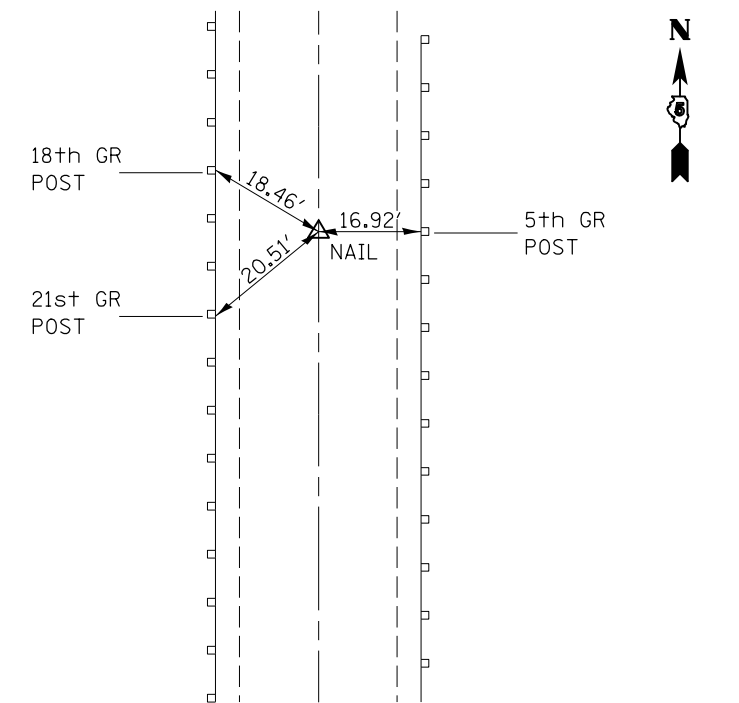
#37 362 + 34.344



#38 377 + 77.75



#39 389 + 63.41 BK = 390 + 79.19 AH



FILE NAME =	USER NAME = castrub	DESIGNED -	REVISED -
c:\pwork\pwork\castrub\d0313174\057084-sh1-ATB.dgn		DRAWN -	REVISED -
	PLOT SCALE = 40.0000' / in.	CHECKED -	REVISED -
MODELNAME	PLOT DATE = 1/3/2014	DATE - 08/27/13	REVISED -

**STATE OF ILLINOIS
DEPARTMENT OF TRANSPORTATION**

**TIE POINTS
AND BENCHMARKS**

SCALE: N/A SHEET 2 OF 5 SHEETS STA. TO STA.

F.A.P. RTE.	SECTION	COUNTY	TOTAL SHEETS	SHEET NO.
71	(122,121)I	•	199	14
• DEWITT / MCLEAN			CONTRACT NO. 70984	
ILLINOIS FED. AID PROJECT				