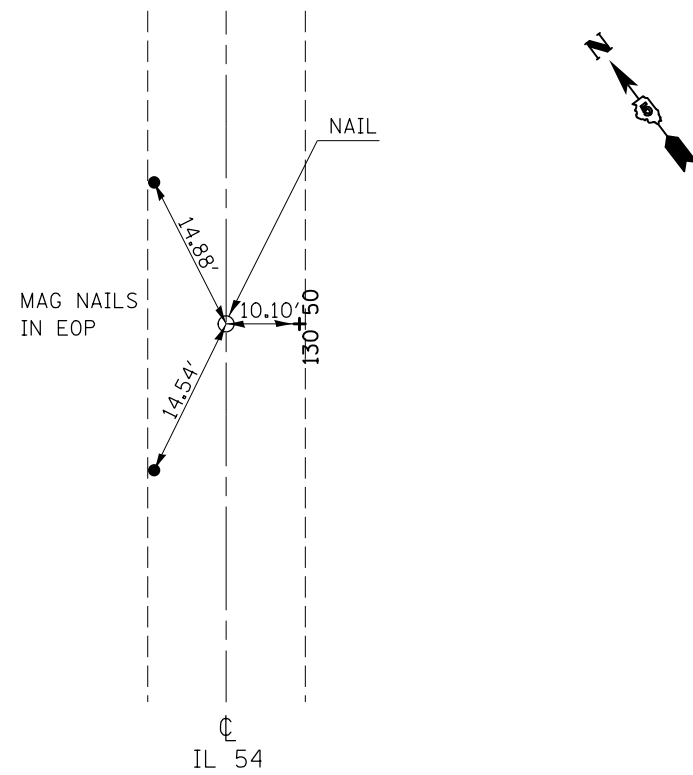
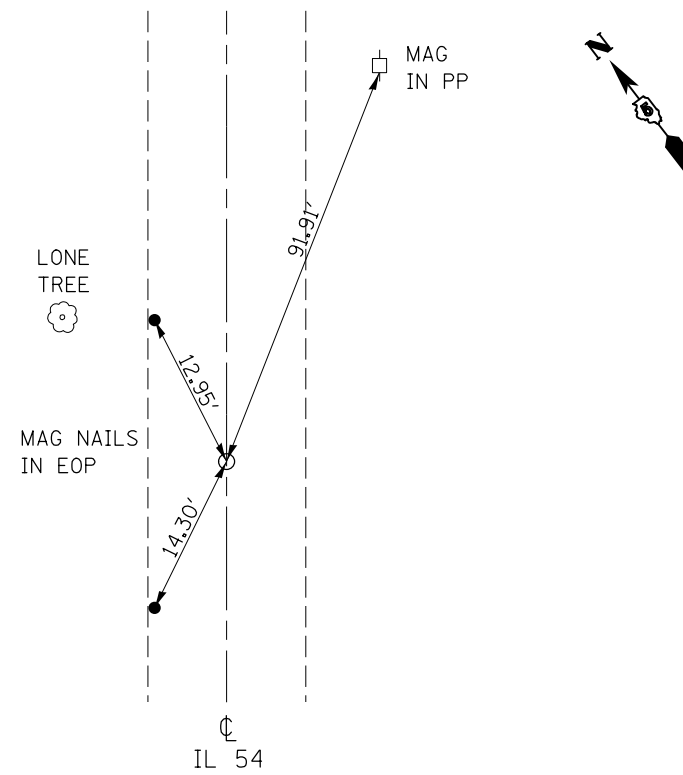


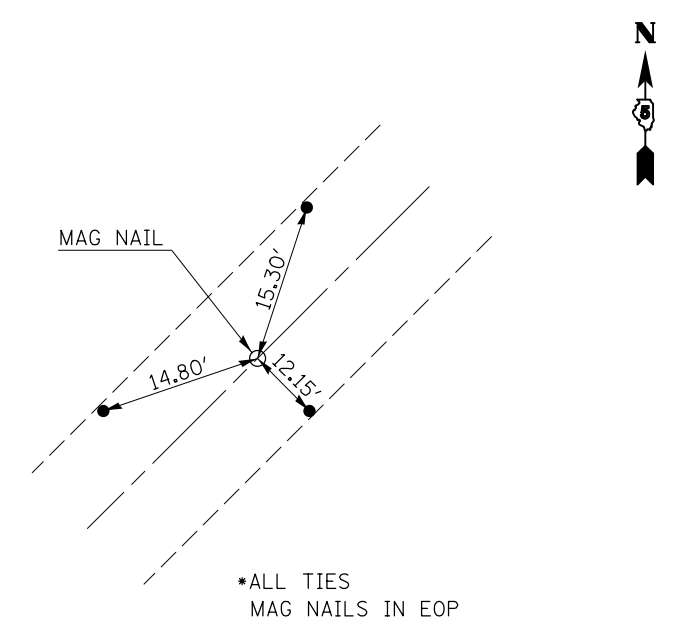
STA. EQ. P.O.T. #10 MAG NAIL
#66 130 + 69.533 (BK) #10 131 + 02.31 (AH)



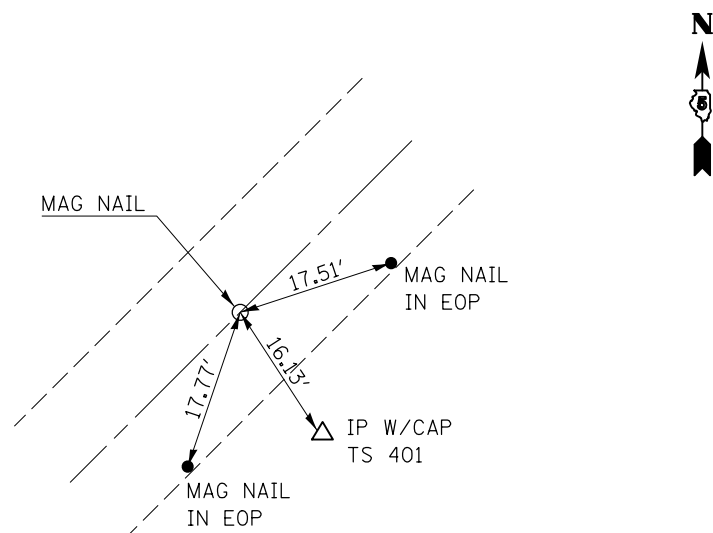
STA. EQ. P.O.T. #11
152 + 63.796 (BK) 152 + 58.603 (AH)



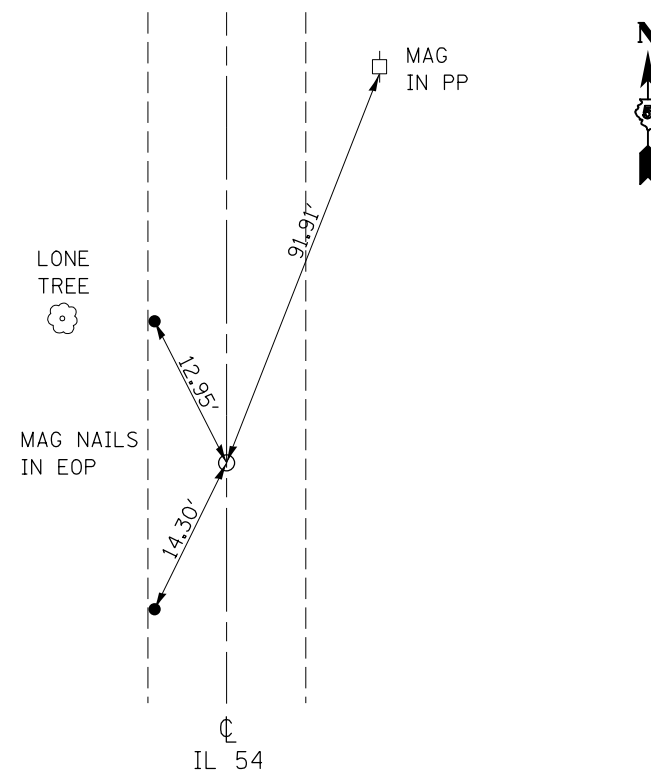
P.O.T. #1
248 + 27.49



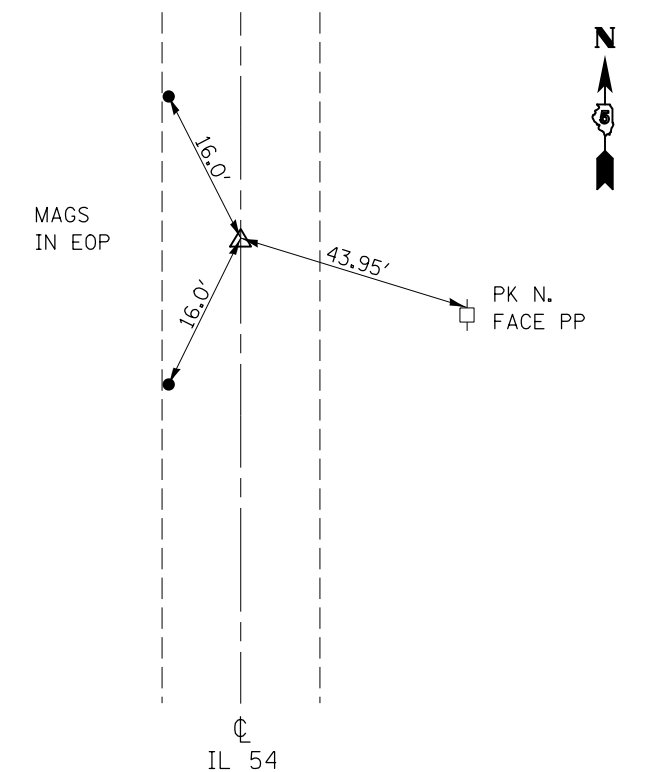
P.O.T. #3
262 + 63.34



P.O.T. #11 MAG NAIL
152 + 63.87



P.I. KINK #14
179 + 24.184



FILE NAME =	USER NAME = castrub	DESIGNED -	REVISED -
c:\pwork\work\pidot\castrub\d0313174\057084-sh1-ATB.dgn		DRAWN -	REVISED -
	PLOT SCALE = 40.0000' / in.	CHECKED -	REVISED -
MODELNAME	PLOT DATE = 1/3/2014	DATE - 08/27/13	REVISED -

STATE OF ILLINOIS
DEPARTMENT OF TRANSPORTATION

TIE POINTS
AND BENCHMARKS

SCALE: N/A SHEET 3 OF 5 SHEETS STA. TO STA.

F.A.P. RTE.	SECTION	COUNTY	TOTAL SHEETS	SHEET NO.
71	(122,121)I	*	199	15
* DEWITT / MCLEAN			CONTRACT NO. 70984	
ILLINOIS FED. AID PROJECT				