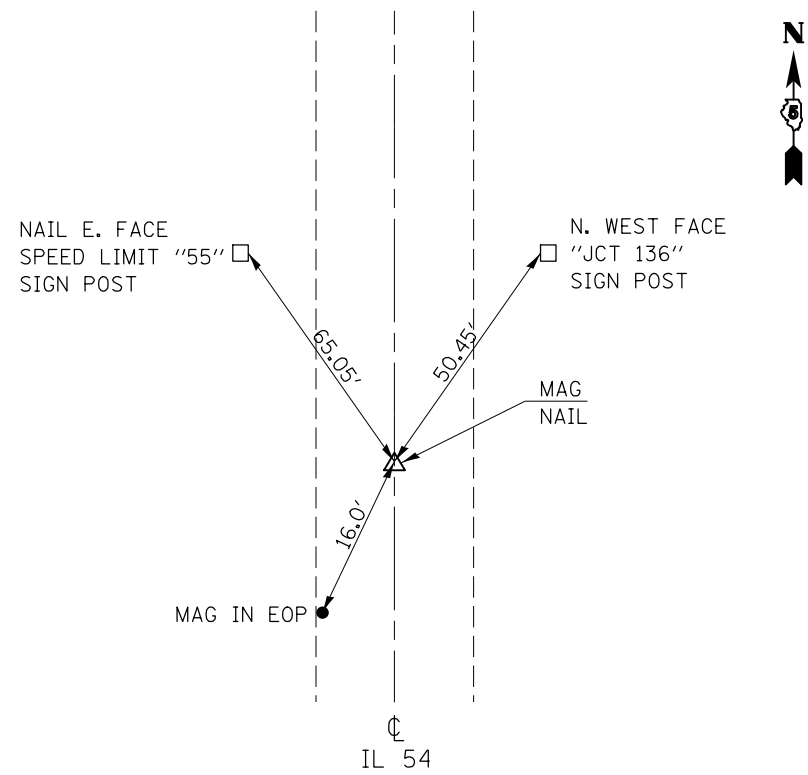


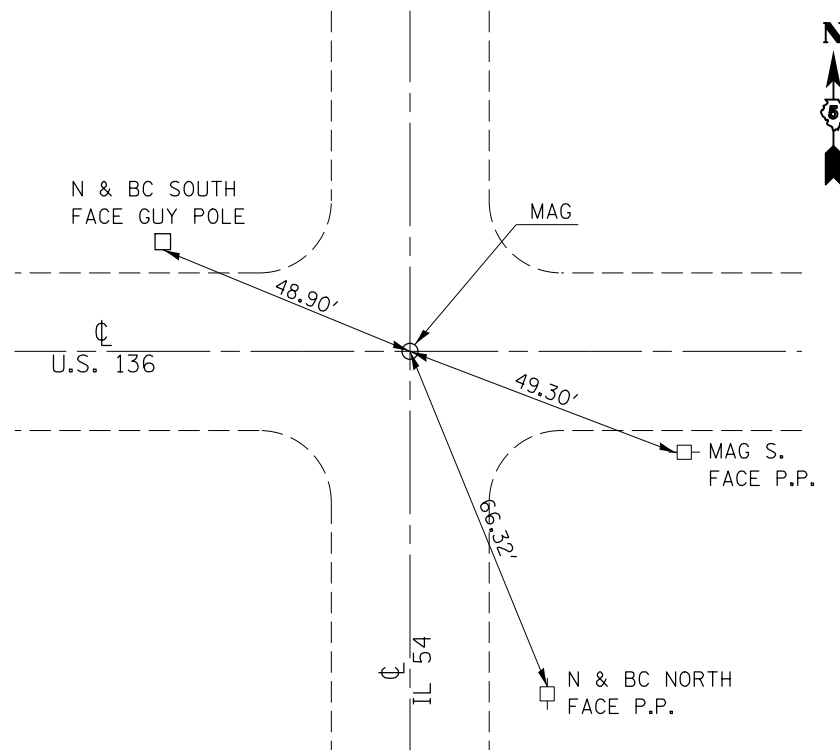
P.O.T. #11 MAG NAIL

152 + 63.87



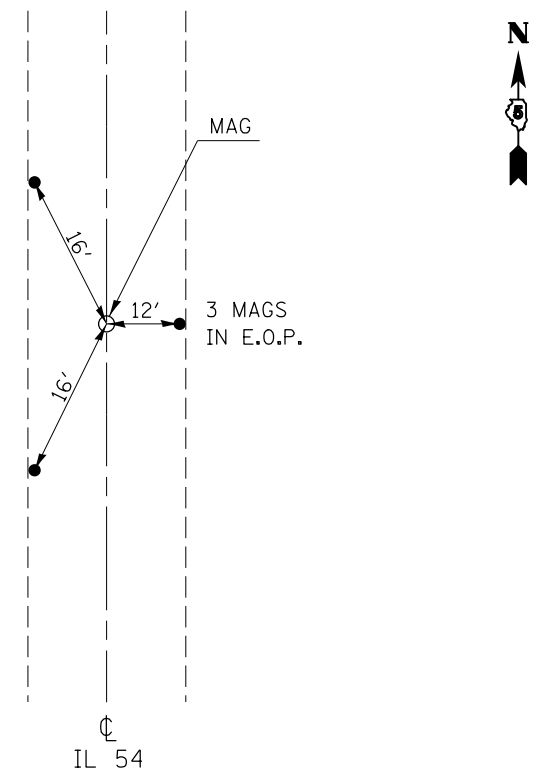
P.O.T. #32

297 + 76.120

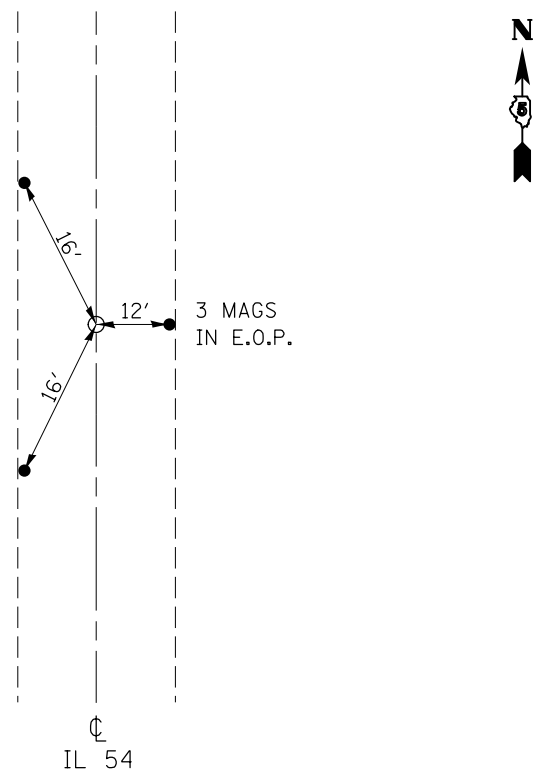


P.O.T. #40 349 + 92.21 AH

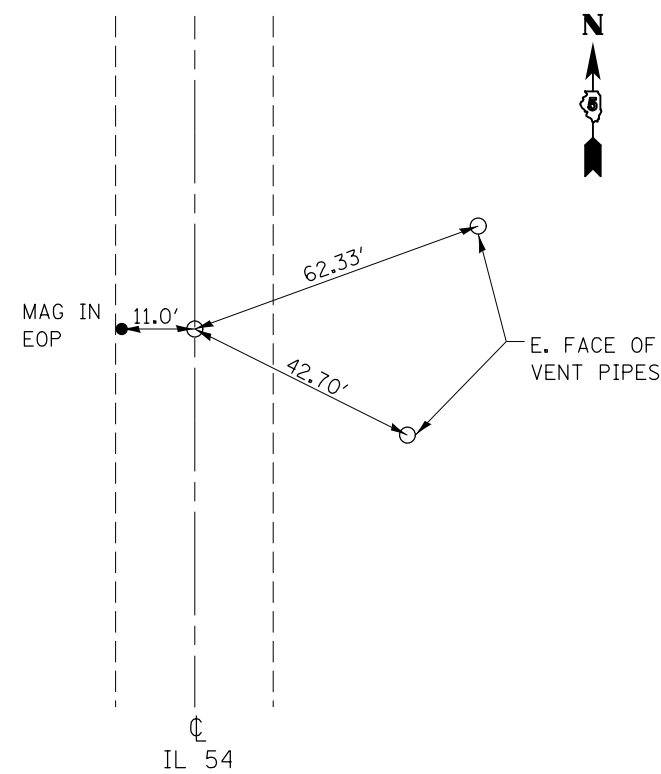
P.O.T. #35 349 + 93.56 BK



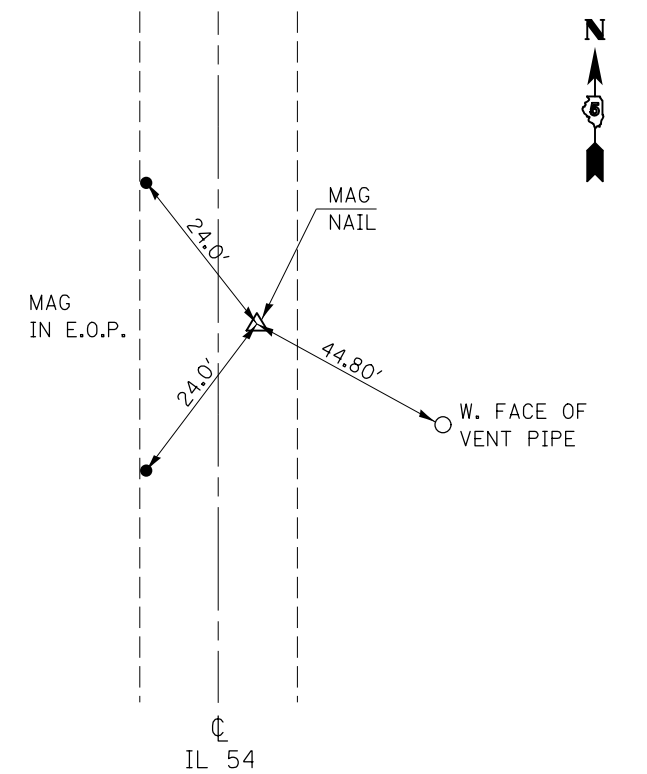
P.O.T. #36 397 + 91.713



P.C. #24 401 + 63.541



P.I. #28 405 + 86.661



FILE NAME =	USER NAME = castrub	DESIGNED -	REVISED -
c:\pwork\pwork\castrub\d0313174\057084-shr-ATB.dgn		DRAWN -	REVISED -
	PLOT SCALE = 48.0000' / in.	CHECKED -	REVISED -
\$MODELNAME\$	PLOT DATE = 1/3/2014	DATE - 08/27/13	REVISED -

**STATE OF ILLINOIS
DEPARTMENT OF TRANSPORTATION**

**TIE POINTS
AND BENCHMARKS**

SCALE: N/A SHEET 4 OF 5 SHEETS STA. TO STA.

F.A.P. RTE.	SECTION	COUNTY	TOTAL SHEETS	SHEET NO.
71	(122,121)I		199	16
DEWITT / MCLEAN			CONTRACT NO. 70984	
ILLINOIS FED. AID PROJECT				