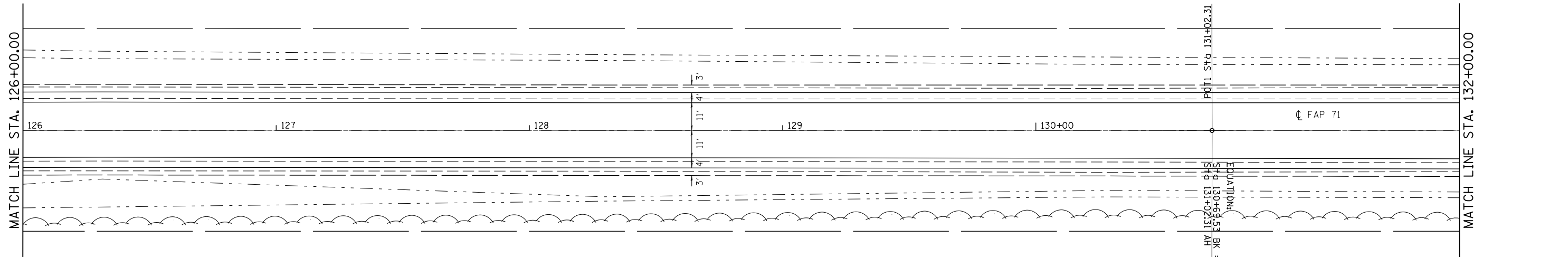
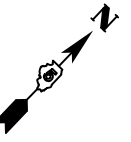


SEC. 15, T21N, R-5E, 3RD PM



SEC. 15, T21N, R-5E, 3RD PM

 PAVEMENT REMOVAL

• DEWITT / MCLEAN

FILE NAME = c:\pwork\pwork\castrub\d0313174\057084-sh1-DblPln.1.dgn	USER NAME = castrub	DESIGNED -	REVISED -	STATE OF ILLINOIS DEPARTMENT OF TRANSPORTATION	PLAN SHEET			F.A.P. RTE. 71	SECTION (122,121)I	COUNTY •	TOTAL SHEETS 199	SHEET NO. 26
#MODELNAME#	PLOT SCALE = 40.0000' / in.	CHECKED -	REVISED -		SCALE:	SHEET	OF	SHEETS	STA. 120+00.00	TO STA. 132+00.00	ILLINOIS FED. AID PROJECT	
	PLOT DATE = 1/3/2014	DATE -	REVISED -		CONTRACT NO. 70984							