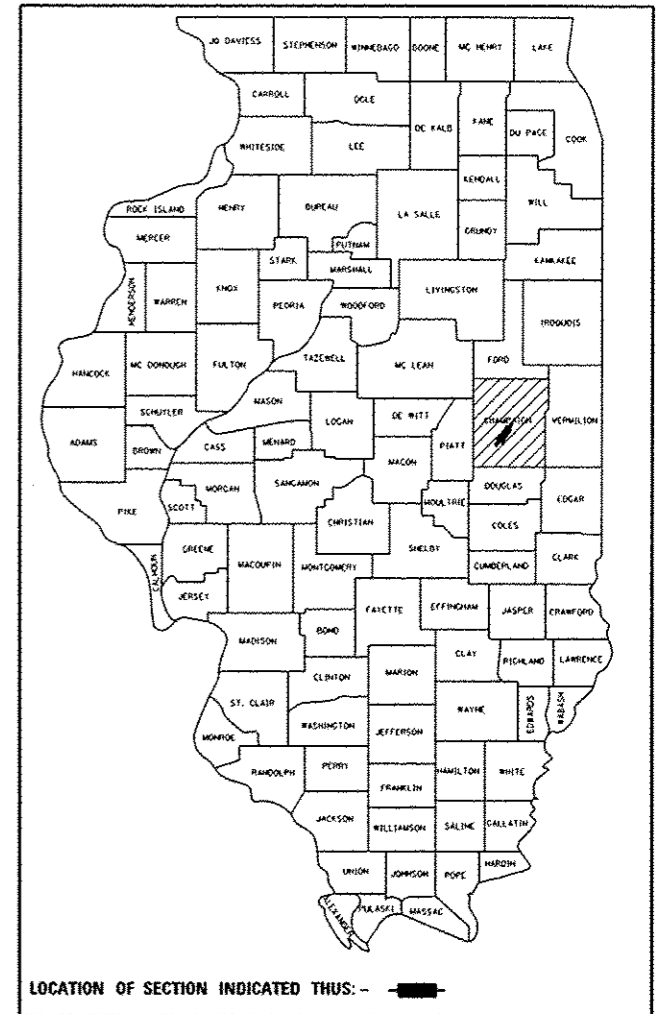


STATE OF ILLINOIS  
DEPARTMENT OF TRANSPORTATION  
DIVISION OF HIGHWAYS

F.A.I. RTE.	SECTION	COUNTY	TOTAL SHEETS	SHEET NO.
57	HFSC 2014-1	CHAMPAIGN	31	1
		ILLINOIS	CONTRACT NO. 70A52	

FOR INDEX OF SHEETS, SEE SHEET NO. 2  
FOR SUMMARY OF QUANTITIES, SEE SHEET NO. 3

D-95-007-14



**PROPOSED  
HIGHWAY PLANS**

F.A.I. ROUTE 57 (I-57)  
SECTION HFSC 2014-1  
PROJECT ACHSIP-0057 (308)  
SKIDPROOFING & NEW SIGNING  
CHAMPAIGN COUNTY

C-95-007-14

AT F.A.I. ROUTE 74 INTERCHANGE



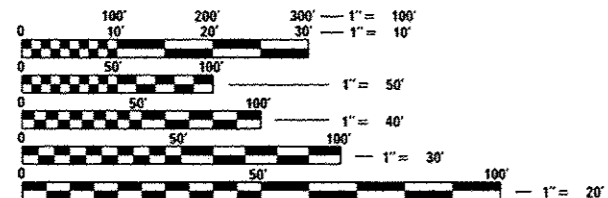
**CURRENT TRAFFIC DATA**

(2013 ADT)

RAMP I-CA	=	2800
RAMP I-BD	=	2100
RAMP I-BC	=	650
RAMP I-DA	=	5700
RAMP I-DB	=	2100
RAMP I-AC	=	3300
RAMP I-AD	=	5600
RAMP I-CB	=	500

**DESIGN DESIGNATION**

INTERSTATE

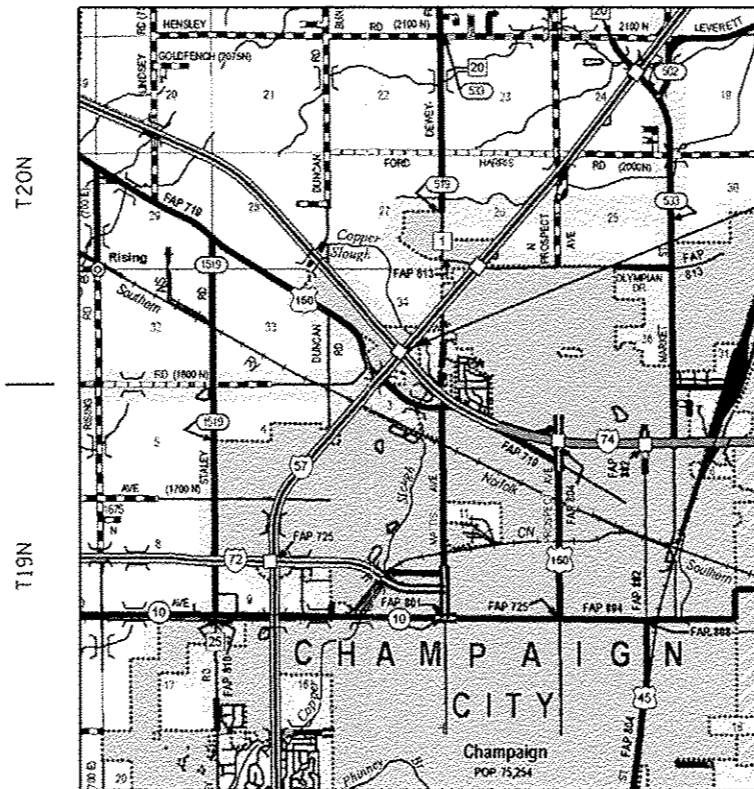


FULL SIZE PLANS HAVE BEEN PREPARED USING STANDARD ENGINEERING SCALES. REDUCED SIZED PLANS WILL NOT CONFORM TO STANDARD SCALES. IN MAKING MEASUREMENTS ON REDUCED PLANS, THE ABOVE SCALES MAY BE USED.

J.U.L.I.E.  
JOINT UTILITY LOCATION INFORMATION FOR EXCAVATION  
1-800-892-0123  
OR 811

TOWNSHIP: CHAMPAIGN CITY

PROJECT ENGINEER: JASON STULTS  
SQUAD LEADER: GREG EAGLIN  
PHONE: 217-465-4181  
CONTRACT NO. 70A52

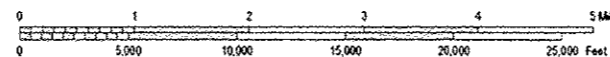


I-57 & I-74 INTERCHANGE RAMP:  
RAMP I-CA THRU RAMP I-CB

RAMP	STATION TO	STATION
I-CA	206+70.00	222+12.00
I-BD	42+06.00	52+60.00
I-BC	166+70.00	180+50.00
I-DA	22+00.00	31+70.00
I-DB	126+70.00	141+90.00
I-AC	2+20.00	12+36.00
I-AD	87+00.00	100+56.00
I-CB	62+00.00	71+82.00

R8E

SCALE



GROSS LENGTH = 9820.00 FT. = 1.860 MILE  
NET LENGTH = 9820.00 FT. = 1.860 MILE

STATE OF ILLINOIS  
DEPARTMENT OF TRANSPORTATION  
DIVISION OF HIGHWAYS

SUBMITTED December 5, 2013

Joseph E. Casano, CKAG  
DEPUTY DIRECTOR OF HIGHWAYS, REGION ENGINEER

Jan 24, 2014  
John D. Baranzello, PE, P.E.  
ENGINEER OF DESIGN AND ENVIRONMENT

Jan 24, 2014  
Omer Osman, PE, P.E.  
DIRECTOR OF HIGHWAYS, CHIEF ENGINEER

**PRINTED BY THE AUTHORITY  
OF THE STATE OF ILLINOIS**