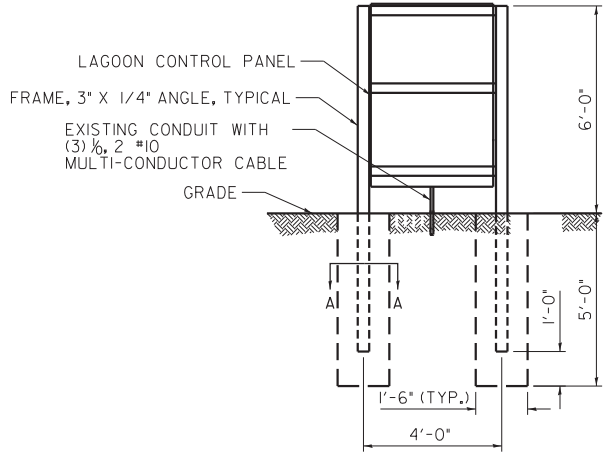


ELECTRICAL BUILDING PLAN
SCALE 1" = 30'



#3@12" (#3@3 FIRST 12" @ TOP) 6*4'S
LAP 8"

- NOTES:
- COORDINATE EXACT MOUNTING CONFIGURATION, FRAME HEIGHT AND WIDTH WITH COMPONENT SHOP DRAWINGS. DIMENSIONS SHOWN ARE APPROXIMATE, AND BASED ON AVAILABLE EQUIPMENT INFORMATION.
 - FASTENING HARDWARE SHALL BE 304 STAINLESS STEEL BOLTS AND STEEL ANGLE IRON AS REQUIRED. ALL ANGLE IRON SHALL BE PRIMED, AND PAINTED WITH GRAY ZINC CHROMATE RUST-RESISTANT PAINT.

LAGOON CONTROL PANEL MOUNTING DETAIL
N.T.S.



FILE NAME = D570A53-sht-details8.dgn	USER NAME = TKee	DESIGNED - JSB	REVISED -
Default	PLOT SCALE = 100.0000' / in.	DRAWN - TDK	REVISED -
	PLOT DATE = 1/15/2014	CHECKED - BEP	REVISED -
		DATE - 12-13-2013	REVISED -

STATE OF ILLINOIS DEPARTMENT OF TRANSPORTATION

ELECTRICAL SITE PLAN

SCALE: NTS SHEET 1 OF 1 SHEETS STA. TO STA.

F.A.I. R.T.E.	SECTION	COUNTY	TOTAL SHEETS	SHEET NO.
55	FUNKS GROVE RA IMP. 2014-	McLEAN	17	17
CONTRACT NO. 70A53				
ILLINOIS FED. AID PROJECT				