

SEC. 22, T20N, R4W, 3RD P.M.

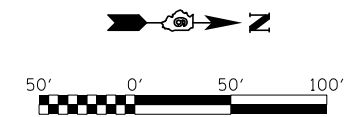
PIPE CULVERTS, CLASS D, TYPE 2
18" W/ END SECTIONS, 18"
USFL=44' LT, STA. 18+50.00, ELEV=531.00
DSFL=46' RT, STA. 18+50.00, ELEV=530.40

6178109B
RODNEY J. WHITE,
JAMES R. WHITE
AND JOHN T. WHITE

SEC. 15, T20N, R4W, 3RD P.M.

6178108

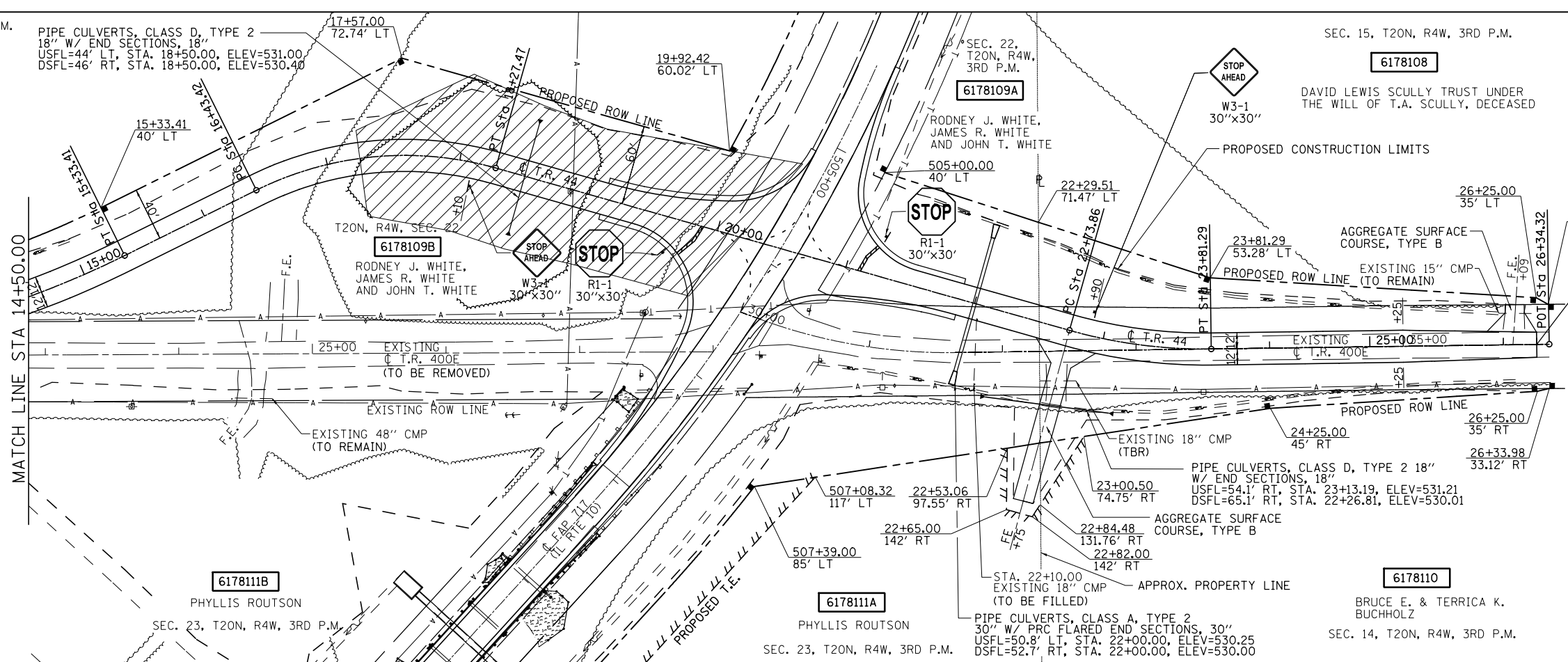
DAVID LEWIS SCULLY TRUST UNDER
THE WILL OF T.A. SCULLY, DECEASED



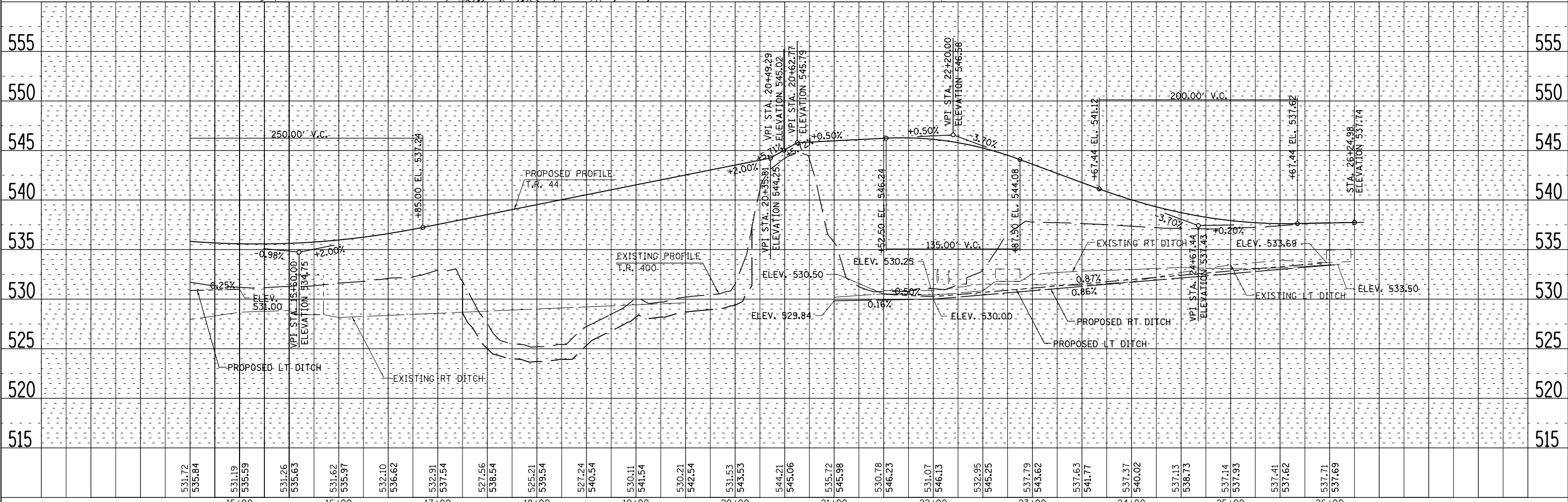
REMOVE "UNSUITABLE MATERIAL" TO A
DEPTH OF 1.5 FEET AND REPLACE WITH
"ROCK FILL-EMBANKMENT".

PROJECT ENDS
(T.R. 400)
STA. 26+24.98

PLAN	SURVEYED	BY	DATE
	PLOTTED		
	ALIGNED		
	CHECKED		
	FILED		
	NO.		



PROFILE	SURVEYED	BY	DATE
	PLOTTED		
	GRADES		
	CHECKED		
	STRUCTURE		
	NOTATIONS		
	CHKD		
	NO.		



FILE NAME =	USER NAME = *USER*	DESIGNED -	REVISED -	STATE OF ILLINOIS DEPARTMENT OF TRANSPORTATION	PLAN & PROFILE - T.R. 44		F.A.P. RT.	SECTION	COUNTY	TOTAL SHEETS	SHEET NO.
FILEL		DRAWN -	REVISED -		717	(102B-1,102CR,102BR-2)RS-5	LOGAN	218	31		
MODELNAME		CHECKED -	REVISED -		CONTRACT NO. 72B82			ILLINOIS FED. AID PROJECT			
		DATE -	REVISED -		SCALE:	SHEET 2 OF 2 SHEETS	STA. 14+50.00 TO STA. 26+24.98				