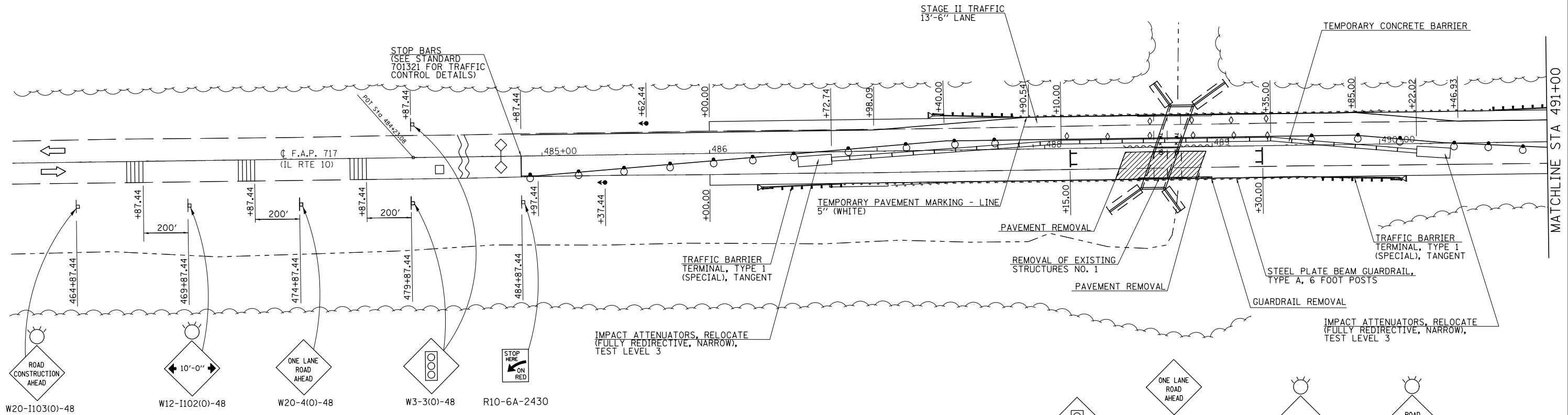
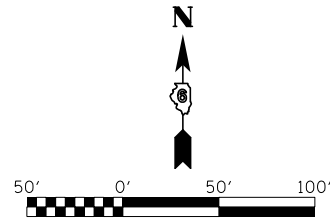


STAGE II TRAFFIC CONTROL CULVERT REPLACEMENT



W20-1103(0)-48
W12-1102(0)-48
W20-4(0)-48
W3-3(0)-48
R10-6A-2430
40 MPH
W13-1(0)-2424

STAGE II NOTES

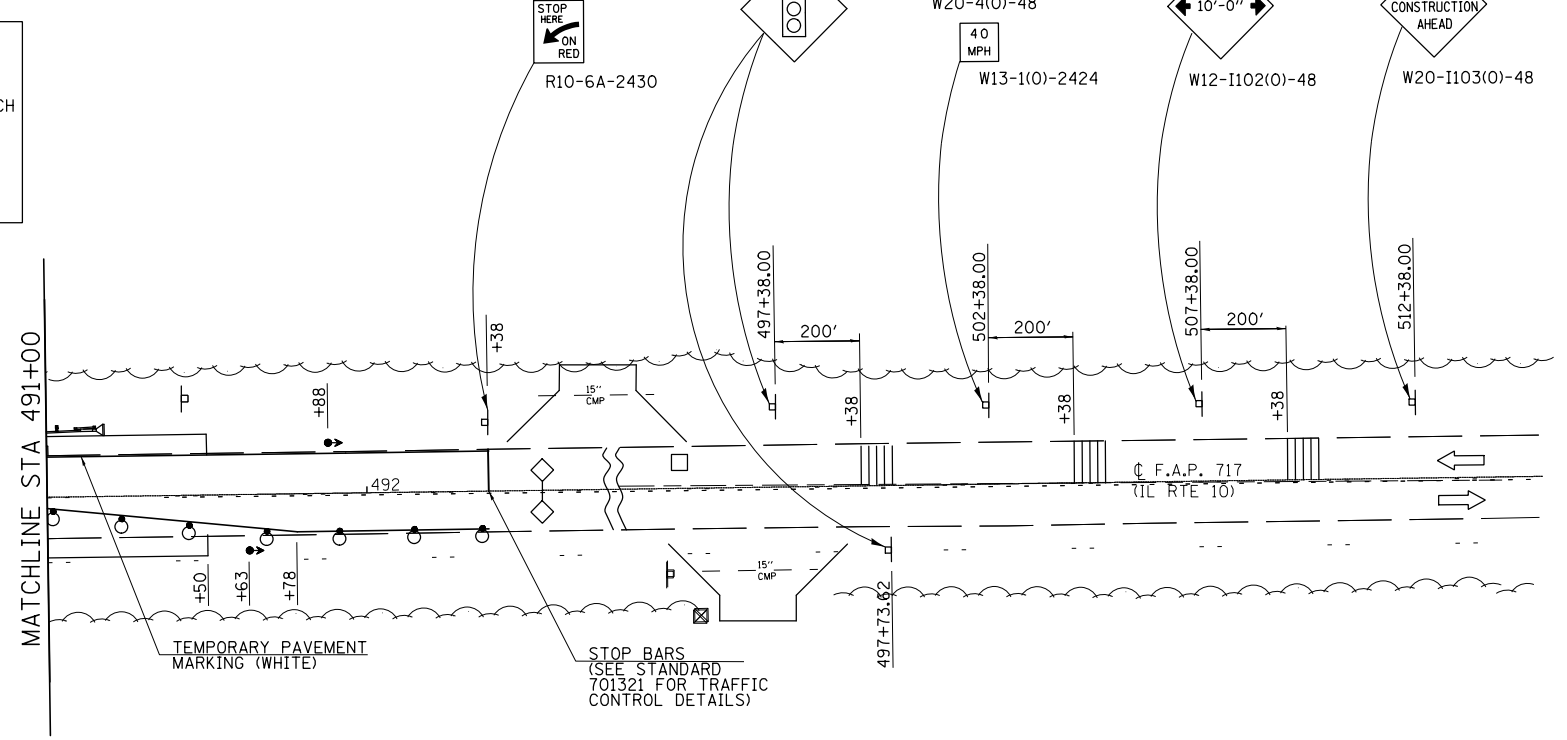
1. RELOCATE SIGNS, TEMPORARY BARRIERS, ETC. IN ACCORDANCE WITH TRAFFIC CONTROL STANDARDS 701321 AND AS SHOWN ON THE STANDARD.
2. PLACE TEMPORARY PAVEMENT MARKING LINE TO ALLOW FOR A 12'-6" TRAFFIC LANE. REMOVE ANY CONFLICTING STRIPING.
3. REMOVE THE STAGE II PORTION OF THE EXISTING STRUCTURE, PAVEMENT, GUARDRAIL, ETC. AT LOCATIONS AS NOTED ON THE PLANS.
4. CONSTRUCT THE STAGE II PORTION OF SN 054-7069 AT STA. 488+73.19.
5. REMOVE BASE COURSE WIDENING AND CONSTRUCT THE STAGE II PORTION OF HOT-MIX ASPHALT SHOULDERS AND PAVEMENT AND INSTALL GUARDRAIL.
6. REMOVE TEMPORARY BARRIERS, SIGNALS, WORK ZONE PAVEMENT MARKING AND SIGNS ASSOCIATED WITH TRAFFIC CONTROL STANDARDS 701321.
7. RESURFACE ROADWAY UTILIZING TRAFFIC CONTROL STANDARD 701306.
8. PLACE SEEDING.

GENERAL NOTES FOR STAGE CONSTRUCTION:

1. ALL SIGNAGE, SPACING, TRAFFIC CONTROL EQUIPMENT AND TEMPORARY PAVEMENT MARKINGS SHALL BE IN ACCORDANCE WITH THE LATEST VERSION OF HIGHWAY STANDARD 701321 AND SHALL BE INCLUDED IN THE CONTRACT UNIT PRICE EACH FOR TRAFFIC CONTROL AND PROTECTION STANDARD 701321.
2. ALL TEMPORARY BRIDGE TRAFFIC SIGNALS FOR CONSTRUCTION WILL BE MEASURED AS 1 (ONE) UNIT.
3. BARRIER OFFSETS ARE FROM THE CENTER OF THE BARRIER.
4. SEE CULVERT PLANS FOR ADDITIONAL DETAILS.
5. STOP BARS TO BE LOCATED PER STD. 701321.

LEGEND

	WORK AREA		DOUBLE VERTICAL PANEL (SEE DETAIL)
	SIGN ON PORTABLE OR PERMANENT SUPPORT		TEMPORARY SIGNAL LIGHT
	DRUM WITH BI-DIRECTIONAL STEADY BURNING LIGHT		IMPACT ATTENUATOR
	TYPE III BARRICADE W/ FLASHING LIGHT		
	TEMPORARY PAVEMENT MARKING		
	TEMPORARY CONCRETE BARRIER		



FILE NAME =	USER NAME = #USER*	DESIGNED -	REVISED -
#FILE#		DRAWN -	REVISED -
	PLOT SCALE = #SCALE*	CHECKED -	REVISED -
	PLOT DATE = #DATE*	DATE -	REVISED -

STATE OF ILLINOIS
DEPARTMENT OF TRANSPORTATION

STAGE II CONSTRUCTION - FAP 717 (IL RTE 10) - CULVERT

SCALE: SHEET NO. 2 OF 5 SHEETS STA. TO STA.

F.A.P. RTE.	SECTION	COUNTY	TOTAL SHEETS	SHEET NO.
717	(102B-1,102CR,102BR-2)RS-5	LOGAN	218	34
CONTRACT NO. 72B82				
ILLINOIS FED. AID PROJECT				