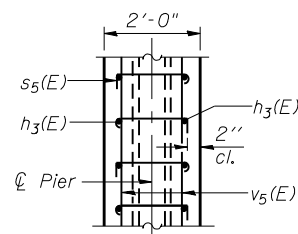
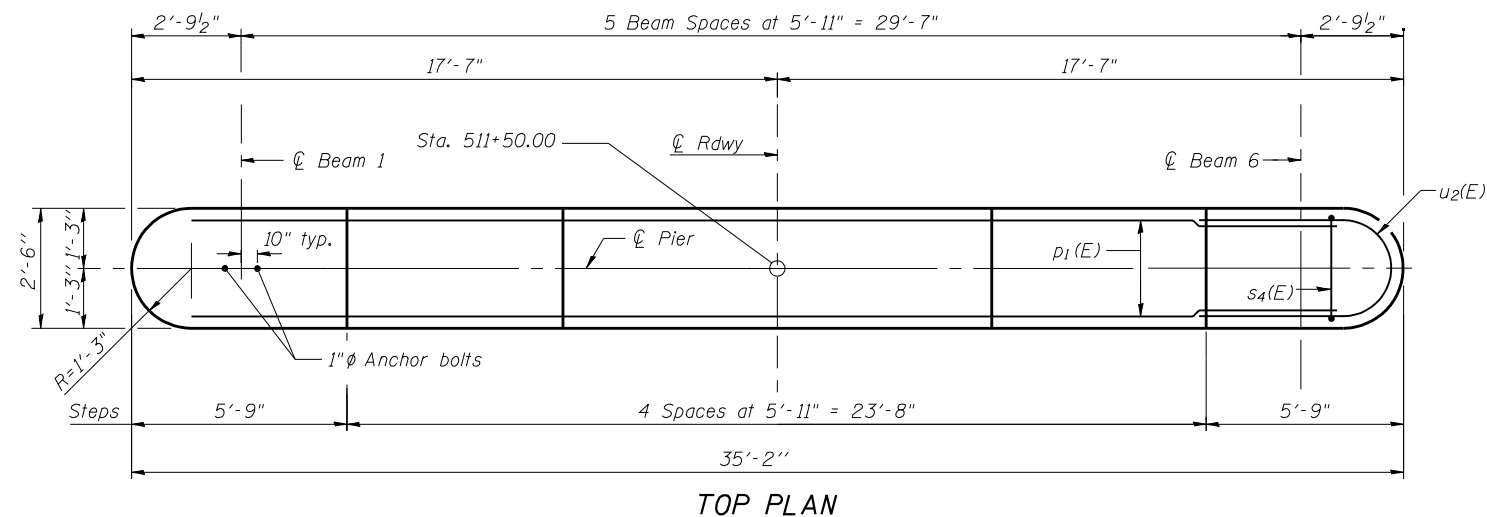


Notes:  
 Space reinforcement in cap to miss anchor bolts.  
 Pour steps monolithically with cap.  
 For details of piles, see sheet 18 of 23.

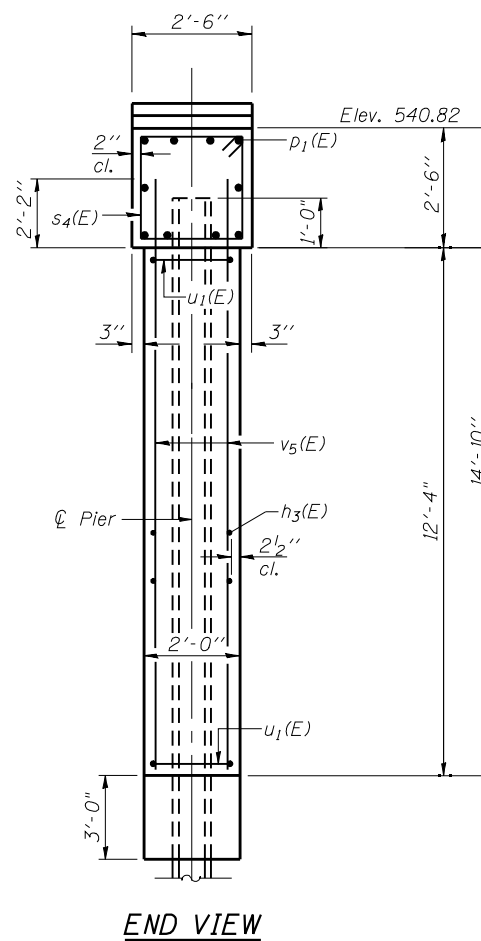
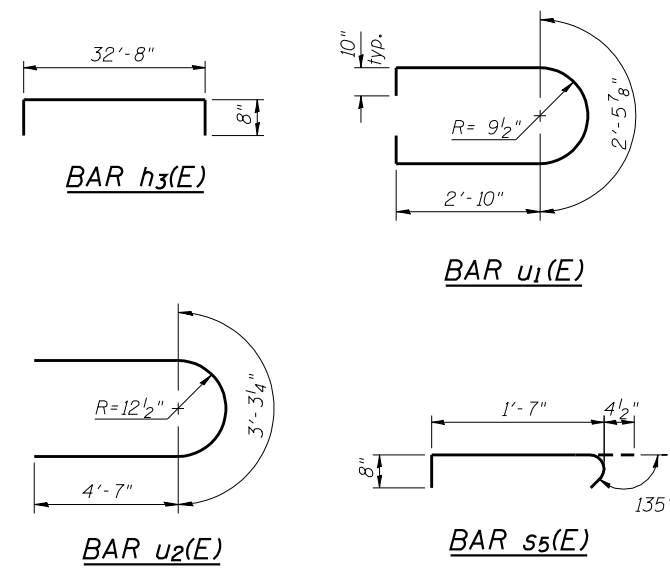


**SECTION THRU WALL  
 AT PILE LOCATION**

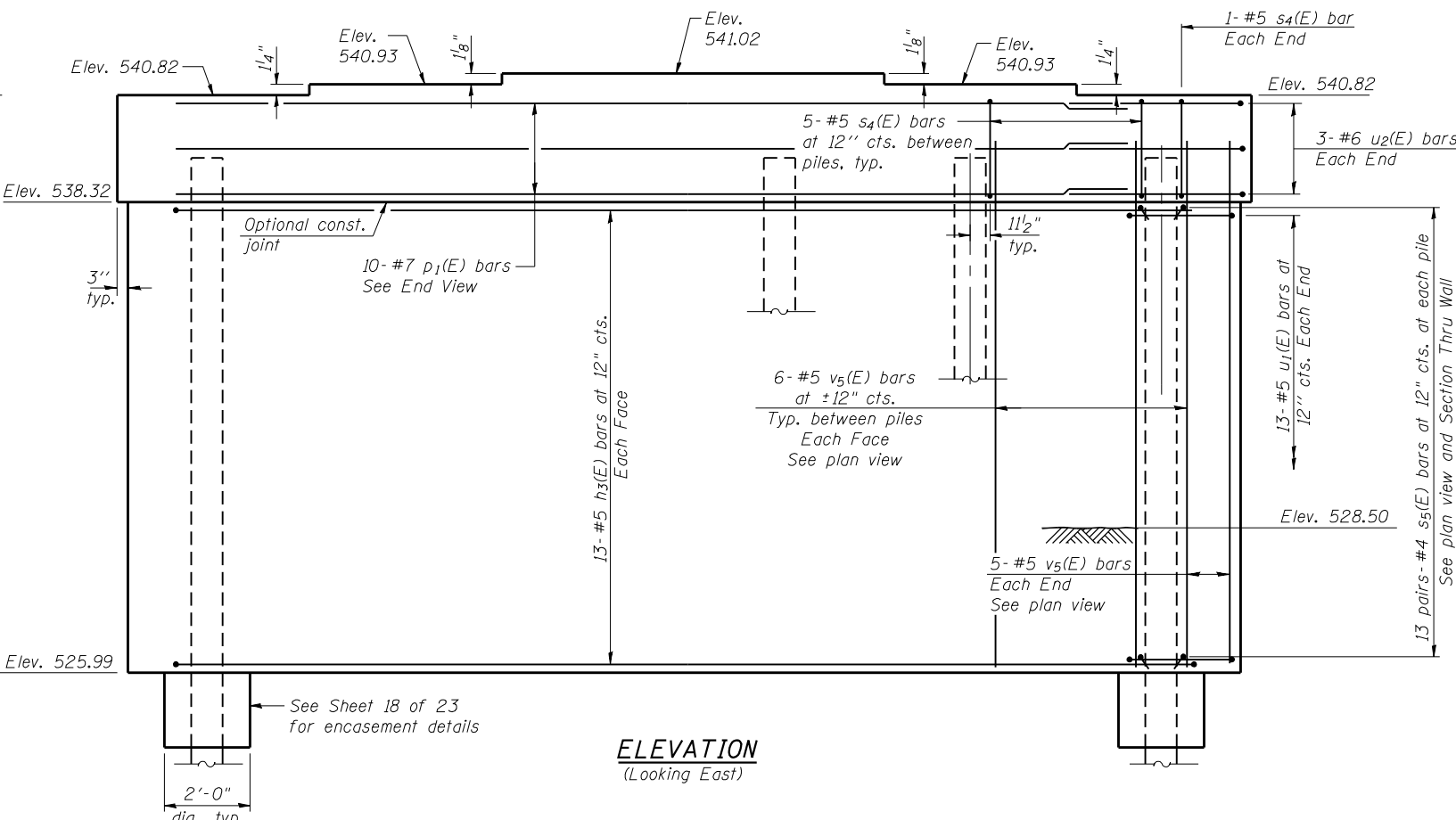
Showing alternating placement of s<sub>5</sub>(E) bars



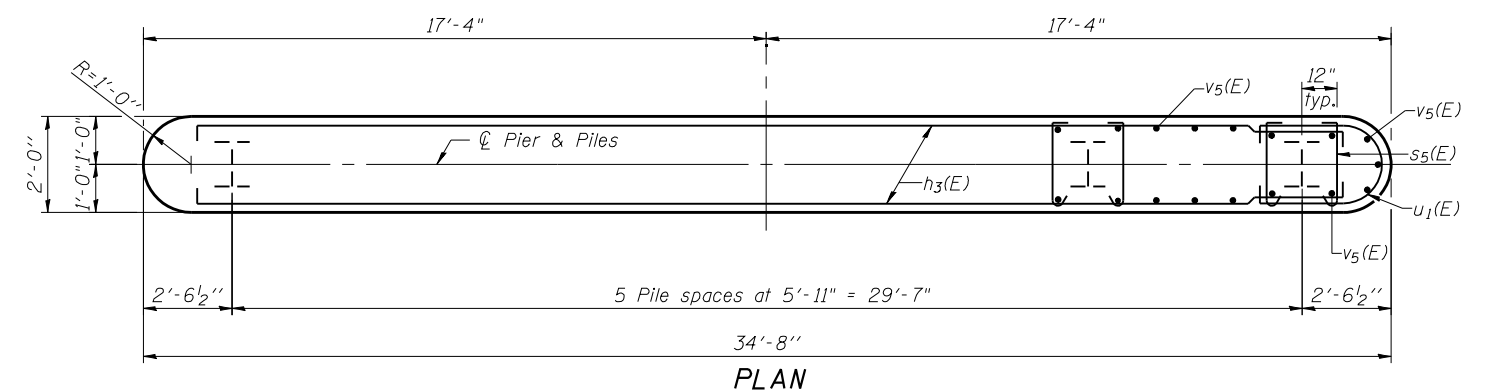
**TOP PLAN**



**END VIEW**



**ELEVATION  
 (Looking East)**



**PLAN**

**PILE DATA**

Type: Steel HP 12x63  
 Nominal Required Bearing: 463 kip  
 Factored Resistance Available: 250 kip  
 Est. Length: 76 ft.  
 No. Production Piles: 5  
 No. Test Piles: 1

**BILL OF MATERIAL**

Bar	No.	Size	Length	Shape
h <sub>3</sub> (E)	26	#5	34'-0"	U
p <sub>1</sub> (E)	10	#7	32'-8"	—
s <sub>4</sub> (E)	27	#5	9'-7"	□
s <sub>5</sub> (E)	156	#4	2'-8"	U
u <sub>1</sub> (E)	26	#5	9'-10"	U
u <sub>2</sub> (E)	6	#6	12'-6"	U
v <sub>5</sub> (E)	70	#5	14'-3"	—
Structure Excavation		Cu. Yd.	21	
Concrete Structures		Cu. Yd.	39.6	
Reinforcement Bars, Epoxy Coated		Pound	3,560	
Furnishing Steel Piles HP 12 x 63		Foot	380	
Driving Piles		Foot	380	
Test Pile Steel HP 12 x 63		Each	1	
Concrete Encasement		Cu. Yd.	2.1	

FILE NAME = 72882-017-10-01.dgn  
 CB PROJECT NO. 072884-B

**Coombe-Bloxdorf P.C.**  
 CIVIL ENGINEERS-  
 STRUCTURAL ENGINEERS-  
 LAND SURVEYORS-  
 Design Firm License No. 184-002703

USER NAME = .MML.	DESIGNED - AMC	REVISED -
PLOT SCALE = 0.1667' / IN.	CHECKED - MCB	REVISED -
PLOT DATE = 10/23/2013	DRAWN - MML	REVISED -
	CHECKED - MCB	REVISED -

**STATE OF ILLINOIS  
 DEPARTMENT OF TRANSPORTATION**

**PIER  
 STRUCTURE NO. 054-0515**

SHEET NO. 17 OF 22 SHEETS

F.A.P. RTE.	SECTION	COUNTY	TOTAL SHEETS	SHEET NO.
717	(102B-1, 102CR, 102BR-2)RS-5	LOGAN	218	71
CONTRACT NO. 72B82				
ILLINOIS FED. AID PROJECT				