

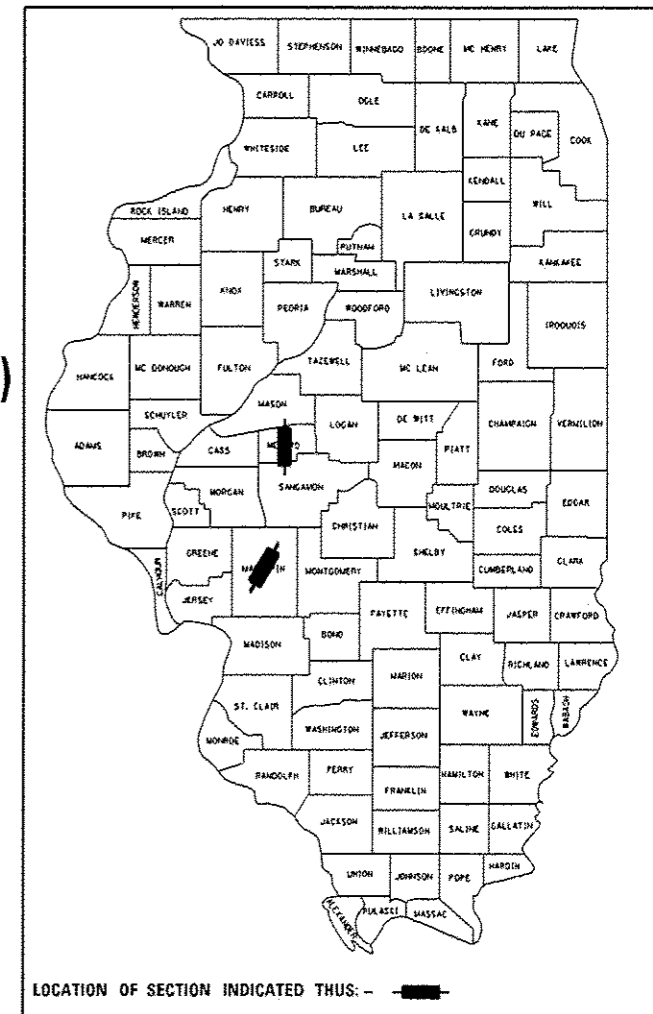
STATE OF ILLINOIS  
DEPARTMENT OF TRANSPORTATION  
DIVISION OF HIGHWAYS

**PROPOSED  
HIGHWAY PLANS**

FAP ROUTE 662, 608, & 737 (IL 4, IL 111, & IL 123)  
SECTION D6 DE MISC 2014  
PROJECT  
DRAINAGE IMPROVEMENTS  
MACOUPIN & MENARD COUNTIES  
C-96-034-14

F.A.P. RTE.	SECTION	COUNTY	TOTAL SHEETS	SHEET NO.
VAR	D6 DE MISC 2014	ILLINOIS	22	1
ILLINOIS CONTRACT NO. 72G64			MACOUPIN & MENARD	

D-96-034-14



FOR INDEX OF SHEETS, SEE SHEET NO. 2

HIGHWAY CLASSIFICATION

F.A.P. ROUTE 662 (IL 4)

CLASSIFICATION: MINOR ARTERIAL  
ADT: 2,650 (2012) PV = 88.7% (2012)  
ADT: 2,730 (2014) SU = 6.6%  
ADT: 3,569 (2034) MU = 4.7%  
DESIGN SPEED: 60 MPH  
POSTED SPEED: 55 MPH

HIGHWAY CLASSIFICATION

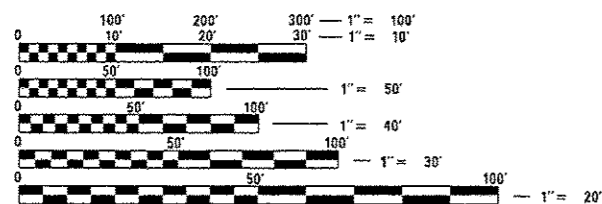
F.A.P. ROUTE 608 (IL 111)

CLASSIFICATION: MINOR ARTERIAL  
ADT: 1,750 (2012) PV = 93.0% (2012)  
ADT: 1,785 (2014) SU = 4.3%  
ADT: 2,135 (2034) MU = 2.7%  
DESIGN SPEED: 35 MPH  
POSTED SPEED: 30 MPH

HIGHWAY CLASSIFICATION

F.A.P. ROUTE 737 (IL 123)

CLASSIFICATION: MINOR ARTERIAL  
ADT: 2,000 (2012) PV = 72.0% (2012)  
ADT: 2,040 (2014) SU = 24.0%  
ADT: 2,440 (2034) MU = 4.0%  
DESIGN SPEED: 60 MPH  
POSTED SPEED: 55 MPH

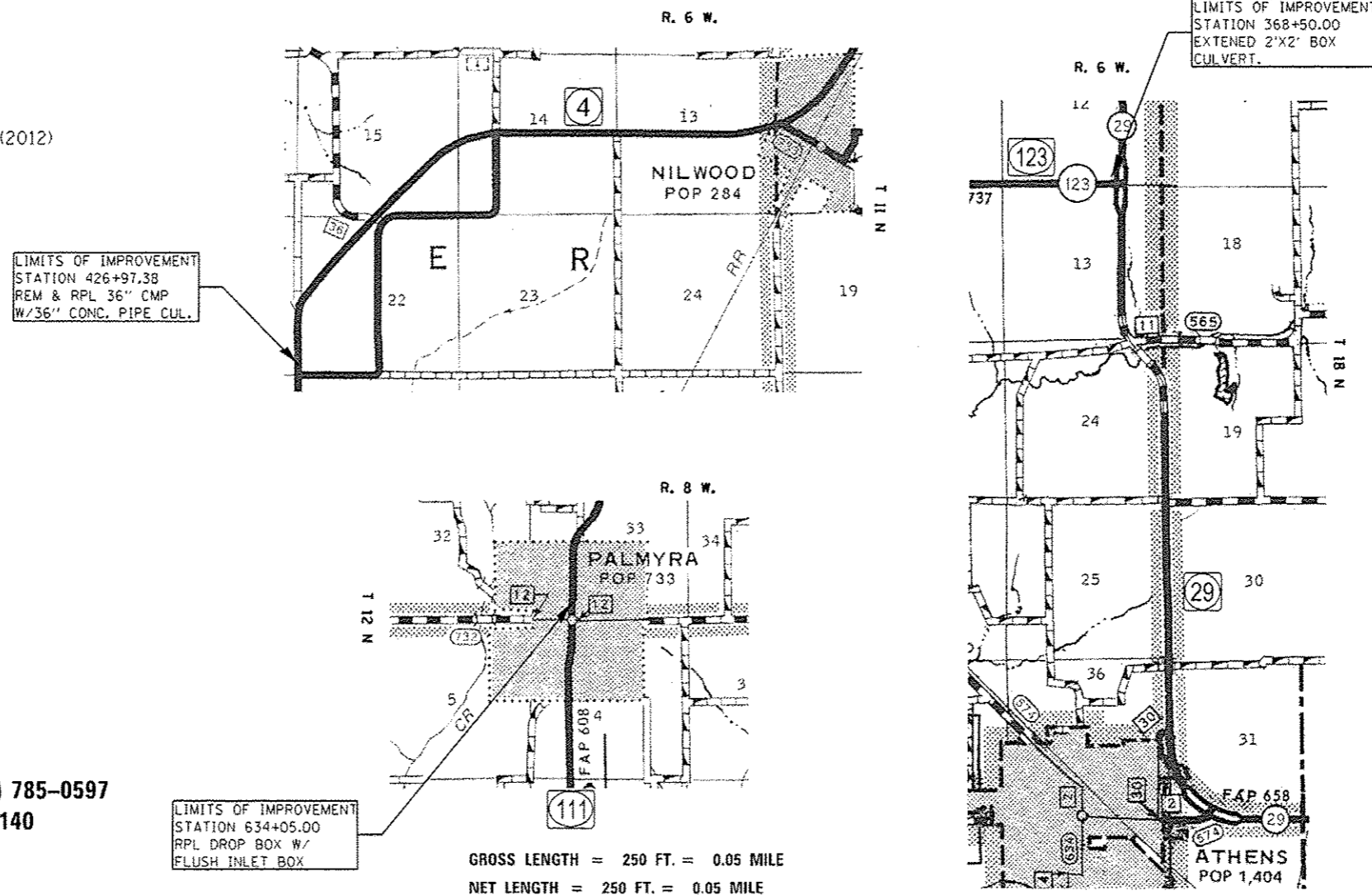


FULL SIZE PLANS HAVE BEEN PREPARED USING STANDARD ENGINEERING SCALES. REDUCED SIZED PLANS WILL NOT CONFORM TO STANDARD SCALES. IN MAKING MEASUREMENTS ON REDUCED PLANS, THE ABOVE SCALES MAY BE USED.

J.U.L.I.E.  
JOINT UTILITY LOCATION INFORMATION FOR EXCAVATION  
1-800-892-0123  
OR 811

SENIOR TEAM ENGINEER: MARK DUST (217) 785-0597  
TEAM LEADER: JONATHAN COX (217) 558-5140

CONTRACT NO. 72G64



GROSS LENGTH = 250 FT. = 0.05 MILE  
NET LENGTH = 250 FT. = 0.05 MILE

STATE OF ILLINOIS  
DEPARTMENT OF TRANSPORTATION  
DIVISION OF HIGHWAYS

SUBMITTED December 13, 2013  
Rep. Z. Osman  
DEPUTY DIRECTOR OF HIGHWAYS, REGION ENGINEER

Jan 24, 2014  
John D. Baranzelli, P.E.  
ENGINEER OF DESIGN AND ENVIRONMENT

Jan 24, 2014  
Omer Osman, P.E.  
DIRECTOR OF HIGHWAYS, CHIEF ENGINEER

PRINTED BY THE AUTHORITY  
OF THE STATE OF ILLINOIS