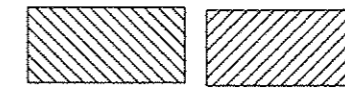
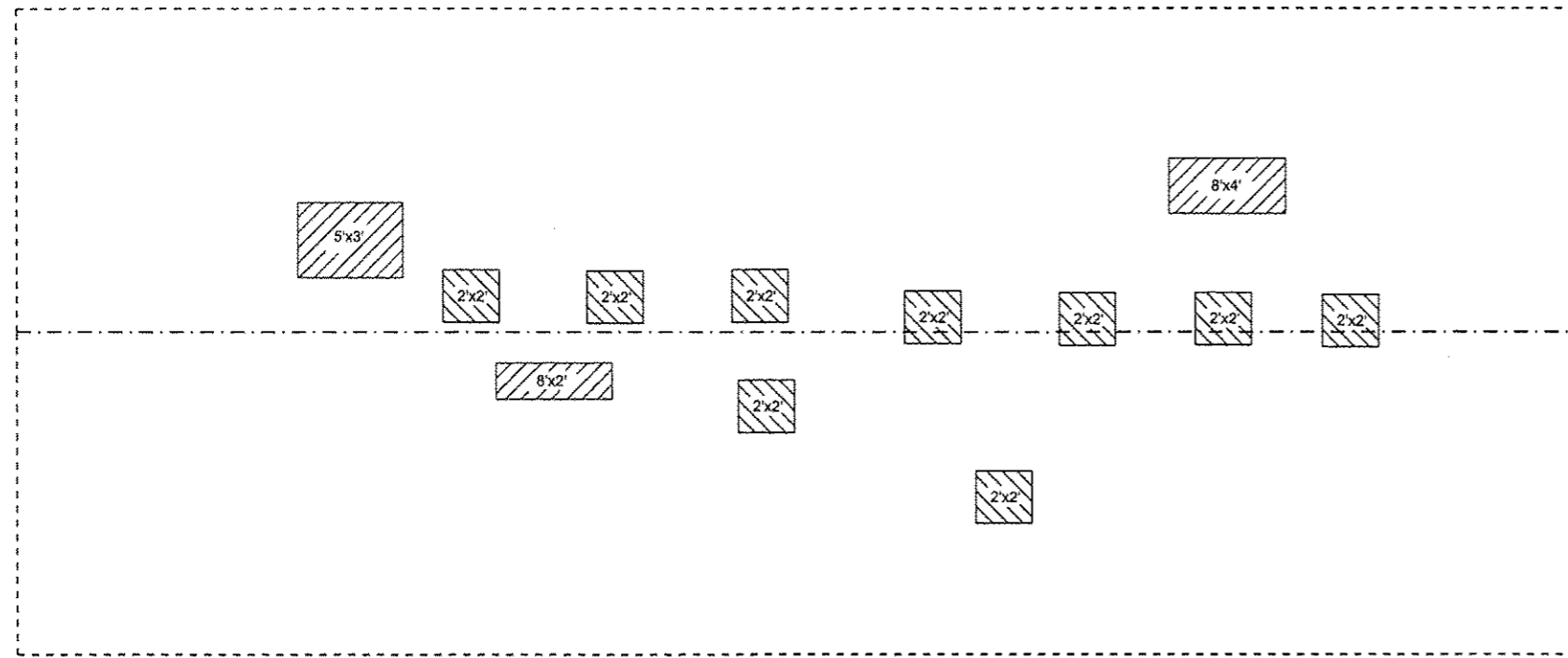


Pier 14

Pier 15



PARTIAL DEPTH PATCHING AREAS

DATE OF SURVEY 11/15/2013

SPAN 15 PARTIAL DEPTH PATCHING = 11 SQ YD

SPAN 16 PARTIAL DEPTH PATCHING = 6 SQ YD

SPAN 17 PARTIAL DEPTH PATCHING = 15.8 SQ YD

S. ABUT. PARTIAL DEPTH PATCHING = 2.2 SQ YD

PAGE TOTAL = 35 SQ YD

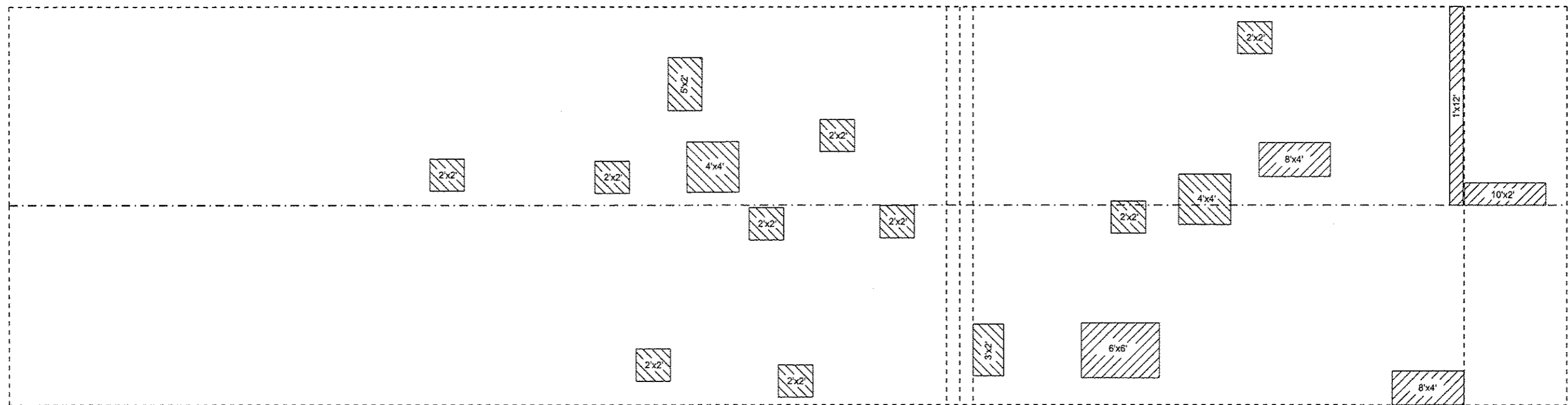


Pier 15

Span 15

Pier 16

S. Abut.



Span 16

Span 17

STATE OF ILLINOIS
DEPARTMENT OF TRANSPORTATION

DECK PATCHING PLAN

FILE NAME *	USER NAME * dudleybm	DESIGNED -	REVISED -
Q:\OPERATIONS\Bridgplans\CAD\72672 - 0998001 Beardstown deck patching\plansheet.dgn		DRAWN -	REVISED -
		CHECKED -	REVISED -
		DATE -	REVISED -

SCALE:	SHEET 11	OF 11 SHEETS	STA. _____	TO STA. _____
--------	----------	--------------	------------	---------------

F.A.P. RTE.	SECTION	COUNTY	TOTAL SHEETS	SHEET NO.
310	(86) BDR	CASS	14	14
CONTRACT NO. 72672			ILLINOIS FED. AID PROJECT	