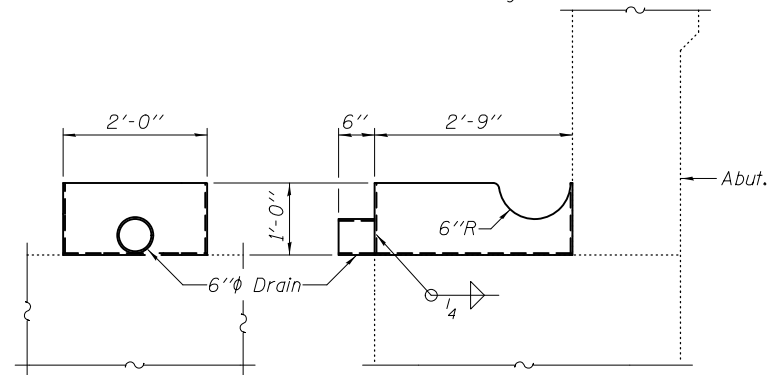


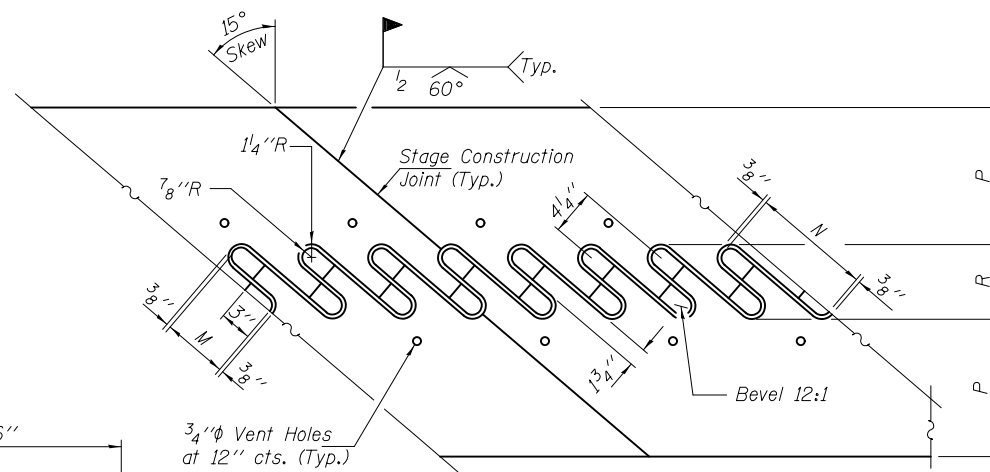
**SCUPPER BOX AT PIERS 2 & 6**

Cost included with cost of Fabric Reinforced Elastomeric Trough.



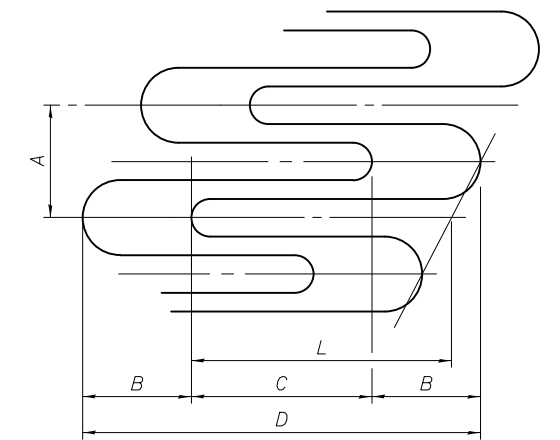
**SCUPPER BOX AT NORTH ABUTMENT**

Cost included with cost of Fabric Reinforced Elastomeric Trough.



**FLAME CUTTING DIAGRAM**

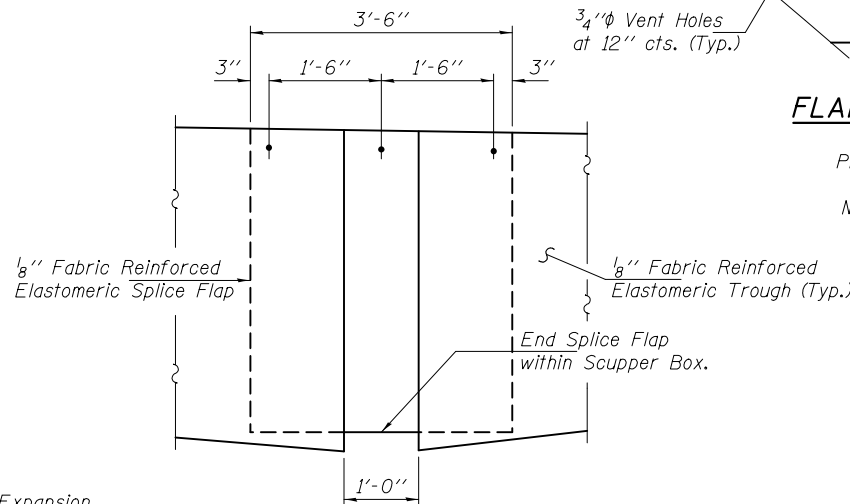
Cut From  
 Pier 2  $\bar{R}$  1 5/8" x 2'-6 1/2"  
 Pier 6  $\bar{R}$  2" x 3'-0"  
 N. Abut  $\bar{R}$  1 1/2" x 2'-5"



**JOINT OPENING AND GEOMETRY DETAIL**

**FINGER PLATE TABLE OF DIMENSIONS**

Location	A	B	C	D	L	M	N	P	R
Pier 2	4 1/4"	3"	5 1/6"	11 1/6"	7 1/2"	6 9/16"	7 1/6"	11 3/8"	7 3/4"
Pier 6	4 1/4"	3 3/4"	5 13/16"	1'-1 5/16"	9"	8 1/6"	9 3/16"	1'-1 7/16"	9 1/8"
N. Abut.	4 1/4"	2 3/4"	4 13/16"	10 5/16"	7"	6 1/6"	7 3/16"	10 7/8"	7 1/4"



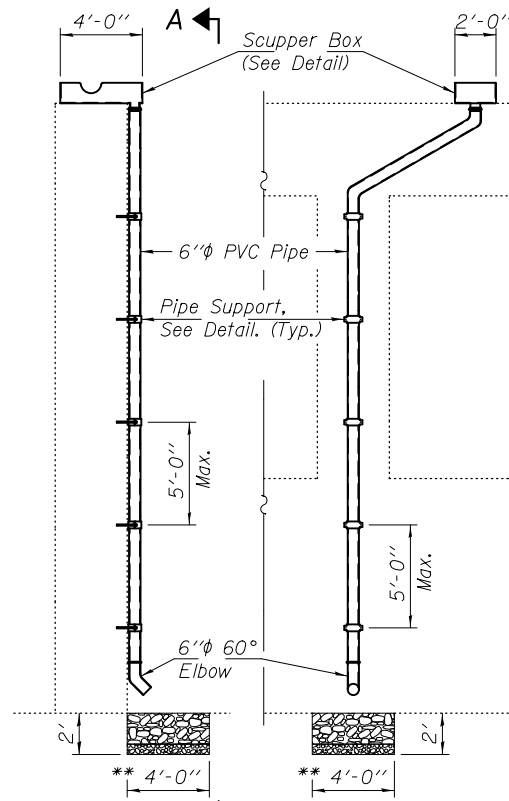
**TROUGH SPLICE DETAIL**

(Scupper Box not shown for clarity)

\* Location of Shim  $\bar{R}$ 's may vary. Trim top and bottom existing Bent  $\bar{R}$ 's flush with the end of existing W12x40. Realign diaphragms along centerline bearing.

**DIM. "X"**

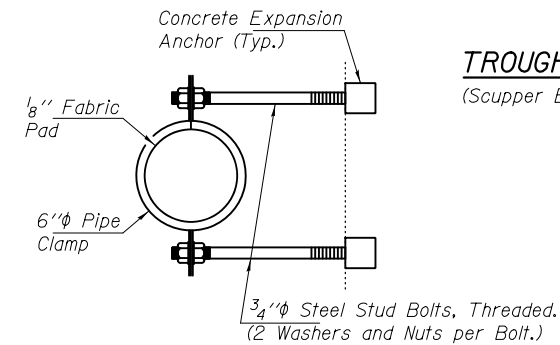
Span	"X"
2	4 1/2"
3	2 11/16"
6	2 5/8"
7	2 5/8"
11	9 1/6"



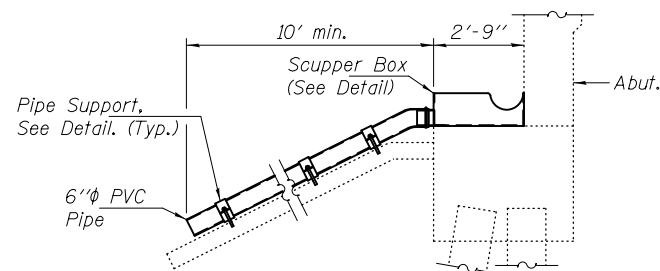
**DRAIN EXTENSION AT PIERS 2 & 6**  
(Looking West)

**VIEW A-A**

Cost of Drain Extensions is included with the cost of Fabric Reinforced Elastomeric Trough.

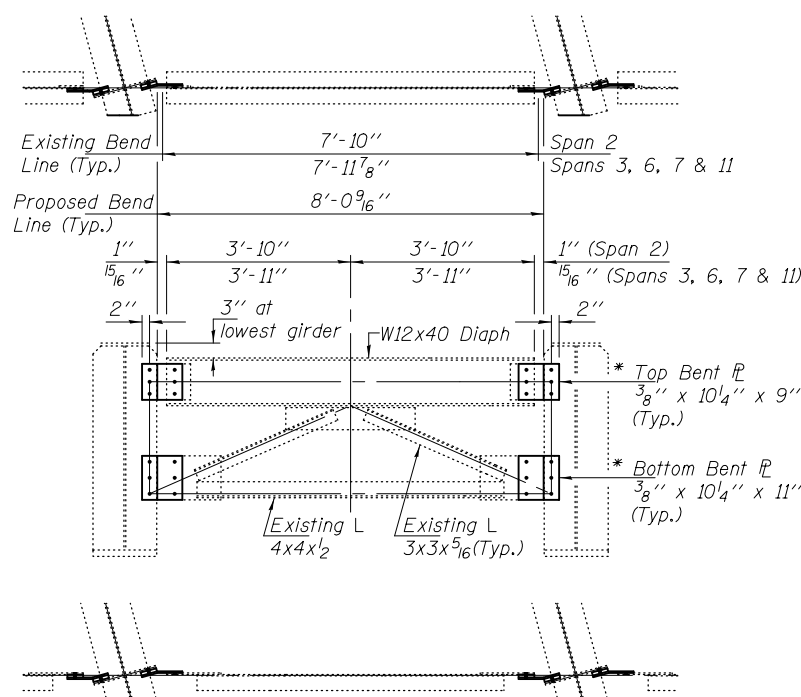


**PIPE SUPPORT**

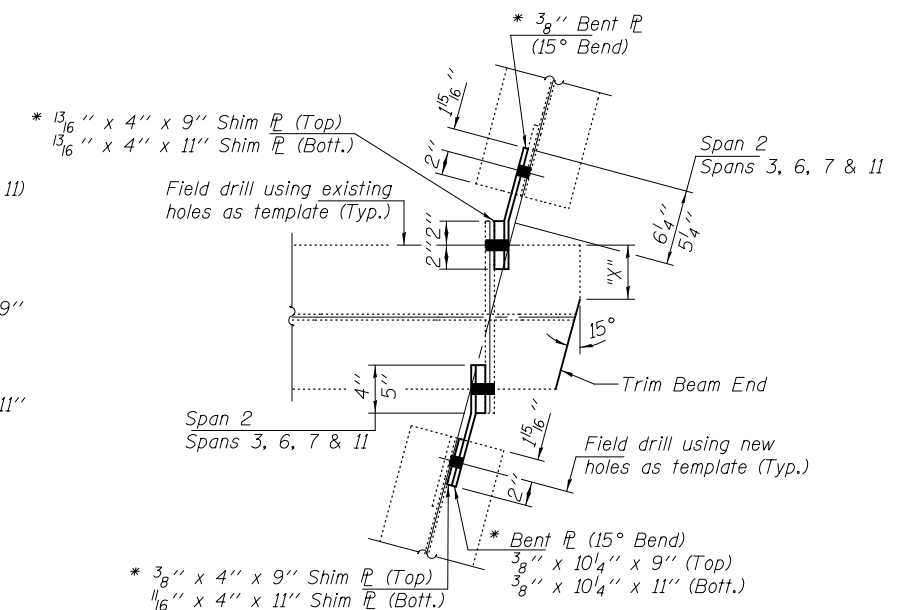


**DRAIN EXTENSION AT N. ABUTMENT**  
(Looking West)

\*\* 4' x 4' area of 18" RR3 riprap pad with 6" CA-7 bedding. Cost of riprap pad and excavation is included with the cost of Fabric Reinforced Elastomeric Trough.



**CROSS FRAME CONNECTION DETAILS**



**TYPICAL DIAPHRAGM CONNECTION**

Diaphragm connection holes shall be 1 5/16"  $\phi$  for 7/8"  $\phi$  bolts. Two hardened washers shall be required at diaphragm connections.

DESIGNED ATH	EXAMINED <i>Timothy A. ...</i>	DATE JANUARY 22, 2014
CHECKED VHV	PASSED <i>...</i>	REVISED
DRAWN Steffen	ACTING ENGINEER OF BRIDGES AND STRUCTURES	REVISED
CHECKED ATH VHV		

STATE OF ILLINOIS  
 DEPARTMENT OF TRANSPORTATION

REPAIR DETAILS  
 SN 082-0227

SHEET NO. 13 OF 17 SHEETS

F.A.I. RTE.	SECTION	COUNTY	TOTAL SHEETS	SHEET NO.
255	82-4HB-1	ST. CLAIR	46	35
CONTRACT NO. 76D51				
ILLINOIS FED. AID PROJECT				