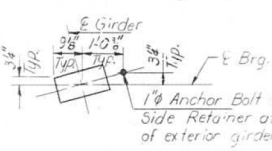
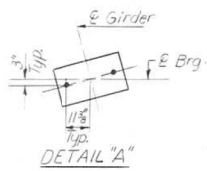


NOTES:

Space reinforcement in cap to miss anchor bolts.
 All edges shall have standard 3/4" chamfers except as noted.
 Pour steps monolithically with cap.
 Bars indicated thus 3x2-#5 etc. indicates 3 lines of bars with 2 lengths per line.

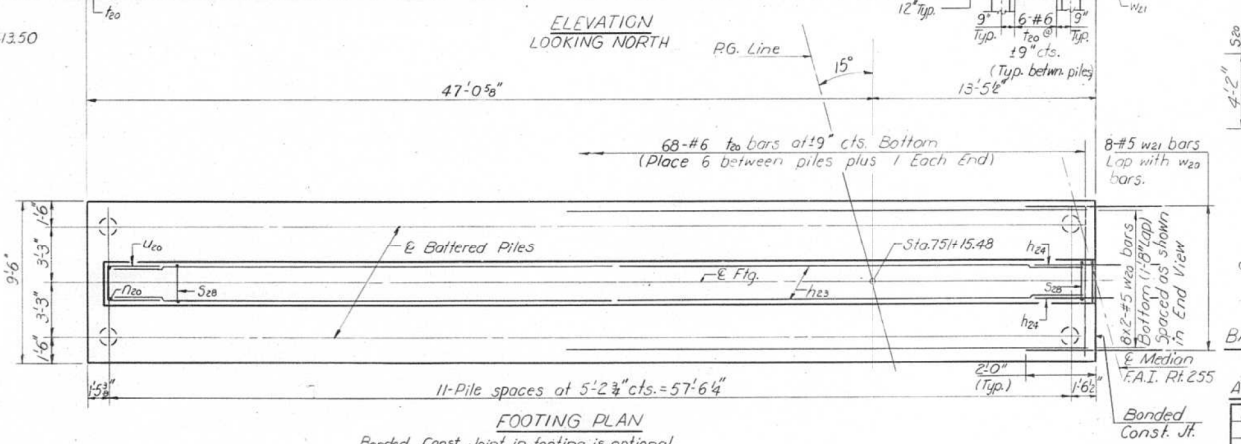
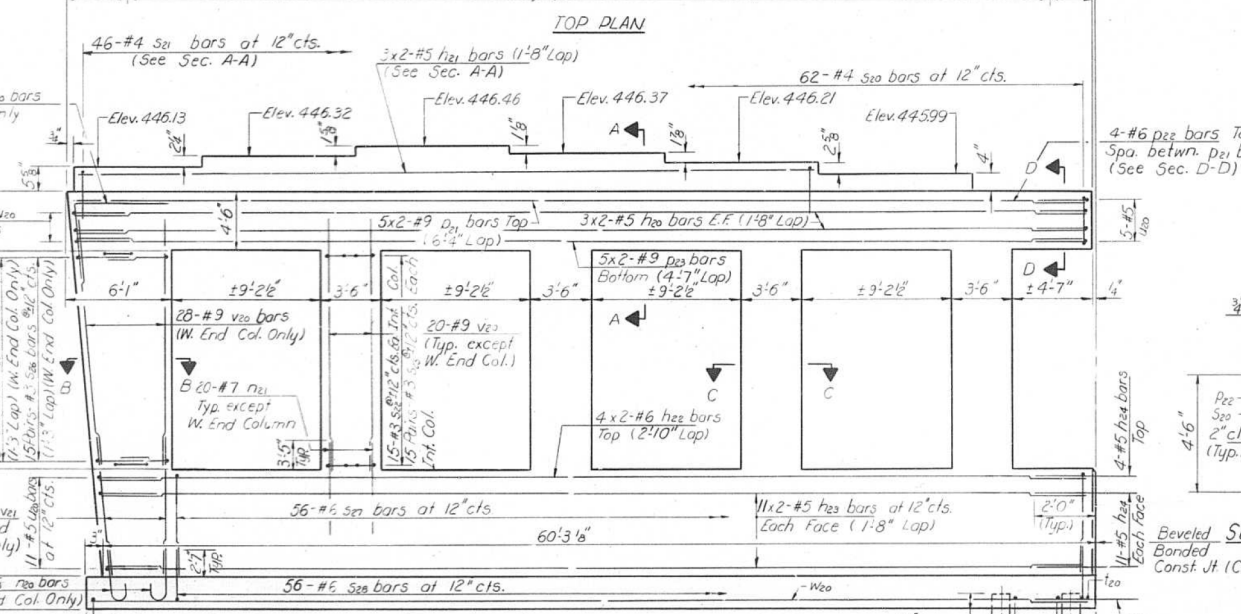
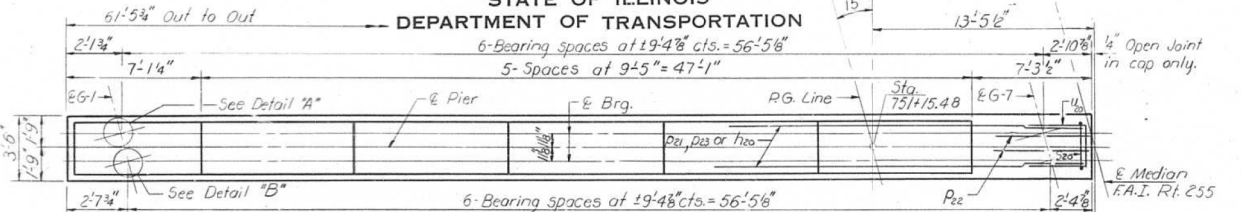


DETAIL "B"



DETAIL "A"

STATE OF ILLINOIS
 DEPARTMENT OF TRANSPORTATION

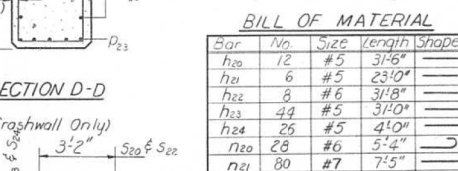
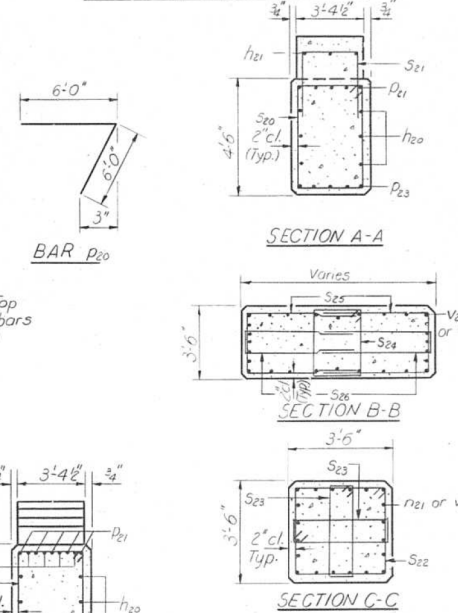


PILE DATA

Type: Concrete
 Capacity: 45 tons
 Est. Length: 44'
 No. Required: 24

| | | | |
|----------|----------------------|----------|--------------------|
| DESIGNED | <i>Rick Brunette</i> | EXAMINED | <i>[Signature]</i> |
| CHECKED | Rick Brunette | PASSED | |
| DRAWN | R. Doty | APPROVED | |
| CHECKED | RAB | | |

| ROUTE NO. | SECTION | COUNTY | TOTAL SHEETS | SHEET NO. |
|-----------|---------|-----------|--------------|-----------|
| 255 | 4 | ST. CLAIR | 50 | 20 |



BILL OF MATERIAL

| Bar | No. | Size | Length | Shape |
|--------------------|-----|------|----------|--------|
| h20 | 12 | #5 | 31'6" | U |
| h21 | 6 | #5 | 23'0" | U |
| h22 | 8 | #6 | 31'0" | U |
| h23 | 44 | #5 | 31'0" | U |
| h24 | 25 | #5 | 4'0" | U |
| h20 | 28 | #6 | 5'4" | U |
| h21 | 80 | #7 | 7'5" | U |
| P20 | 5 | #9 | 12'0" | 7 |
| P21 | 10 | #9 | 33'9" | 7 |
| P22 | 4 | #6 | 8'9" | 7 |
| P23 | 10 | #9 | 32'10" | 7 |
| S20 | 62 | #4 | 15'5" | □ |
| S21 | 46 | #4 | 7'1" | □ |
| S22 | 60 | #3 | 13'5" | □ |
| S23 | 120 | #3 | 8'7" | □ |
| S24 | 15 | #3 | 9'9" | □ |
| S25 | 30 | #3 | 10'0" | □ |
| S26 | 30 | #3 | 8'0" | □ |
| S27 | 56 | #6 | 25'6" | □ |
| S28 | 56 | #6 | 12'6" | □ |
| F20 | 68 | #6 | 9'3" | □ |
| U20 | 20 | #5 | 0'6" | □ |
| V20 | 108 | #9 | 16'0" | □ |
| V21 | 28 | #7 | 14'9" | □ |
| W20 | 16 | #5 | 30'11" | □ |
| W21 | 8 | #5 | 4'0" | □ |
| W22 | 8 | #5 | 4'0" | □ |
| Class X Concrete | | | Cu Yd. | 216.7 |
| Reinforcement Bars | | | Pound | 19,810 |
| Concrete Piles | | | Lin. Ft. | 1056 |

A & B DIMENSIONS

| Bar | A | B |
|-----|-------|--------|
| S21 | 3'11" | 2'-0" |
| S25 | 3'-2" | 3'-5" |
| S26 | 1'-2" | 3'-5" |
| S27 | 3'-2" | 11'-2" |
| S28 | 3'-2" | 4'-8" |
| U20 | 3'-0" | 2'-7" |

PIER 2
 WEST BOUND LANES
 F.A.I. RT. 255 SEC 82-4HVB(B)
 ST. CLAIR COUNTY
 STA 750+74.23

FOR INFORMATIONAL PURPOSES ONLY