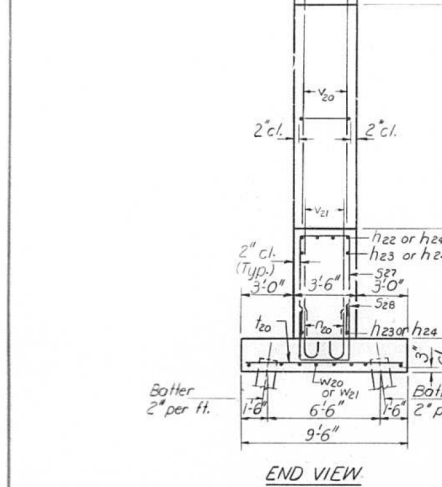
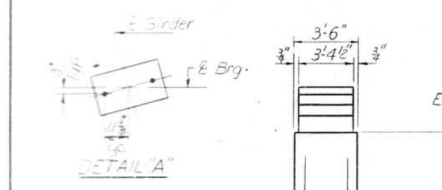
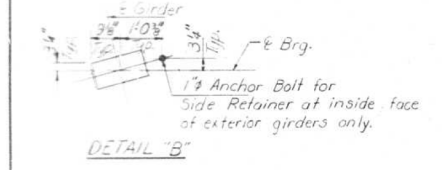


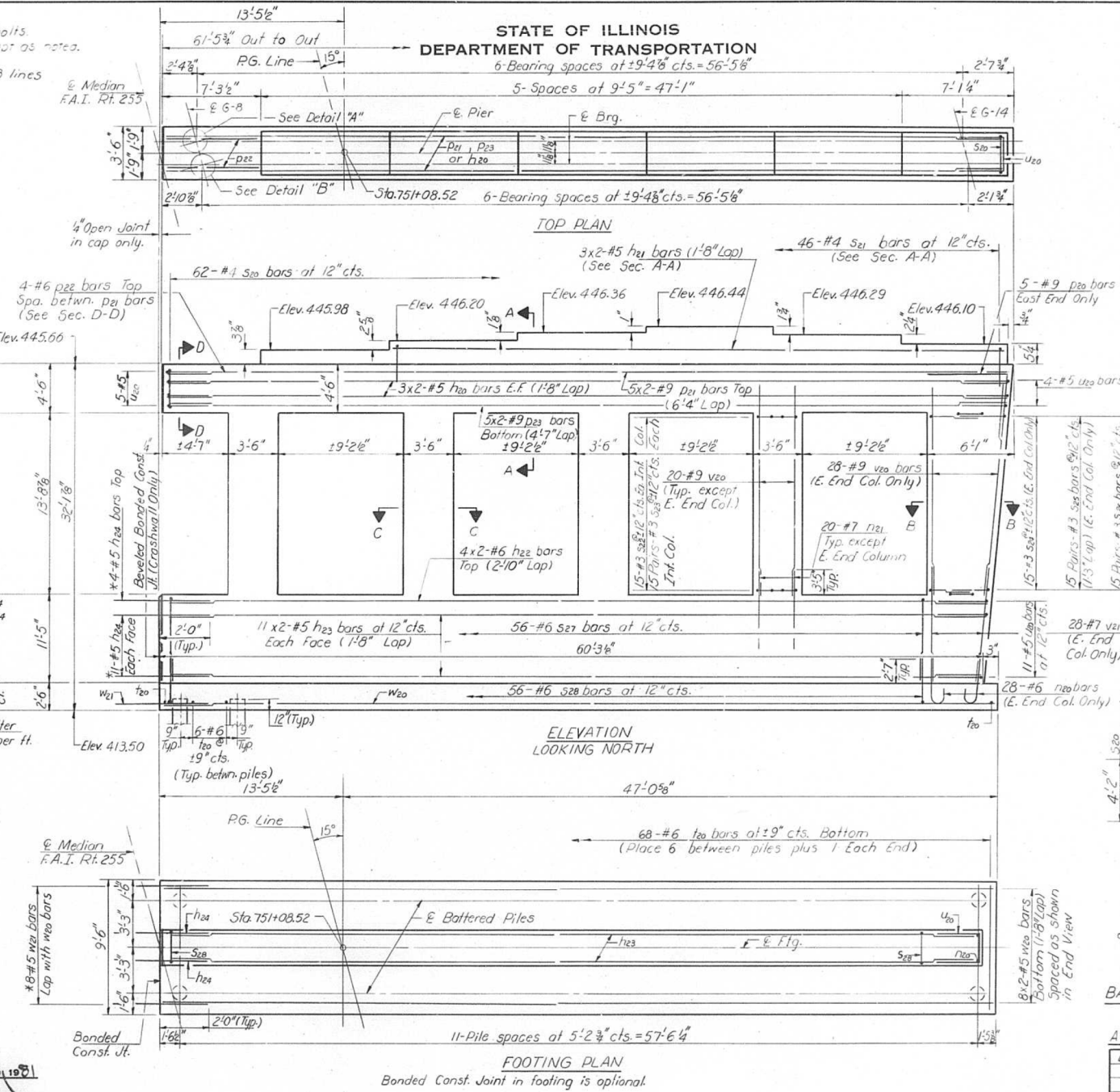
NOTES:
 1. Space reinforcement in cap to miss anchor bolts.
 2. All steps shall have standard 3/4" chamfers except as noted.
 3. Bars indicated thus 3#2 #5 etc. indicates 3 lines of #2 bars with 2 lengths per line.



PILE DATA
 Type: Concrete
 Capacity: 45 tons
 Est Length: 52'
 No. Required: 23+1 test pile in a permanent location.

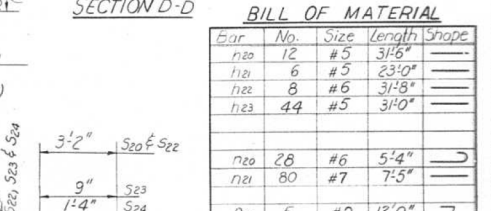
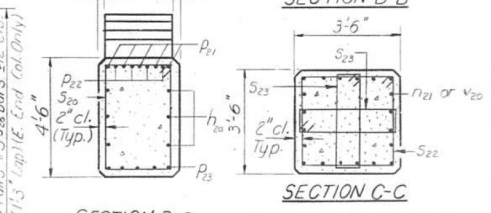
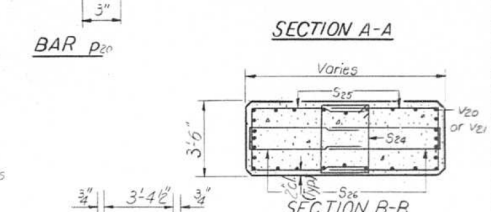
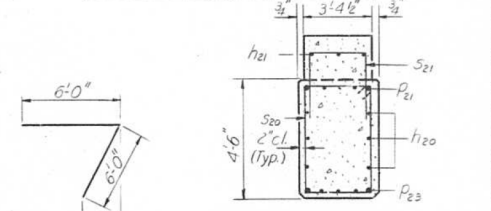
DESIGNED: *[Signature]*
 CHECKED: Rick Brunetta
 DRAWN: R. Doty
 CHECKED: RAB

EXAMINED: *[Signature]* JUL 23 1981
 PASSED: *[Signature]*
 APPROVED: *[Signature]*



* h24 and w21 bars are billed on sheet #9

PROJECT NO.	SECTION	COUNTY	TOTAL SHEETS	SHEET NO.
255	82-4HVB-I	ST. CLAIR	50	21



BARS S20, S21, S22, S23, S24

Bar	A	B
S21	3'-1"	2'-0"
S22	3'-2"	3'-5"
S23	1'-2"	3'-5"
S24	3'-2"	1'-2"
U20	3'-0"	2'-7"

BARS S21, S22 Thru S26 & U20

Bar	No.	Size	Length	Shape
n20	12	#5	31'-6"	—
n10	6	#5	23'-0"	—
n22	8	#6	31'-8"	—
n23	44	#5	31'-0"	—
n20	28	#6	5'-4"	—
n21	80	#7	7'-5"	—
D20	5	#9	12'-0"	7
D21	10	#9	33'-9"	—
D22	4	#6	8'-9"	—
D23	10	#9	32'-10"	—
S20	62	#4	15'-5"	□
S21	46	#4	7'-1"	□
S22	60	#3	13'-5"	□
S23	120	#3	8'-7"	□
S24	15	#3	9'-9"	□
S25	30	#3	10'-0"	□
S26	30	#3	8'-0"	□
S27	56	#6	25'-6"	□
S28	56	#6	12'-6"	□
t20	60	#6	9'-3"	—
U20	20	#5	8'-8"	—
V20	108	#9	16'-0"	—
V21	20	#7	14'-9"	—
W20	16	#5	30'-11"	—

Class X Concrete Cu. Yd. 26.7
 Reinforcement Bars Pound 19,660
 Concrete Piles Lin. Ft. 1196
 Test Pile Concrete Each 1

PIER 2
 CAST BOUND LANES
 F.A.I. RT. 255 SEC. 82-4HVB (B)
 ST. CLAIR COUNTY
 STA. 750+74.23

FOR INFORMATIONAL PURPOSES ONLY