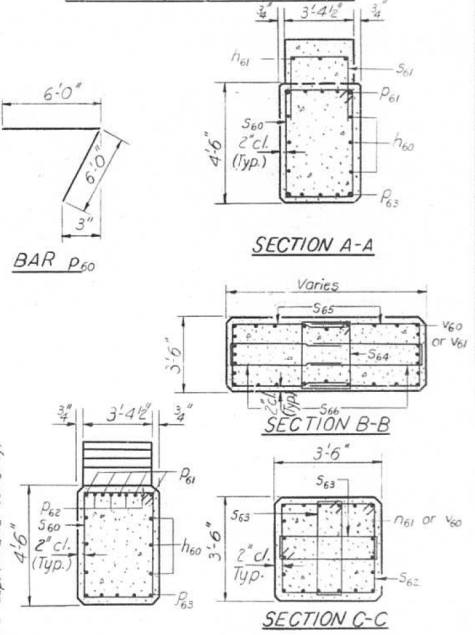
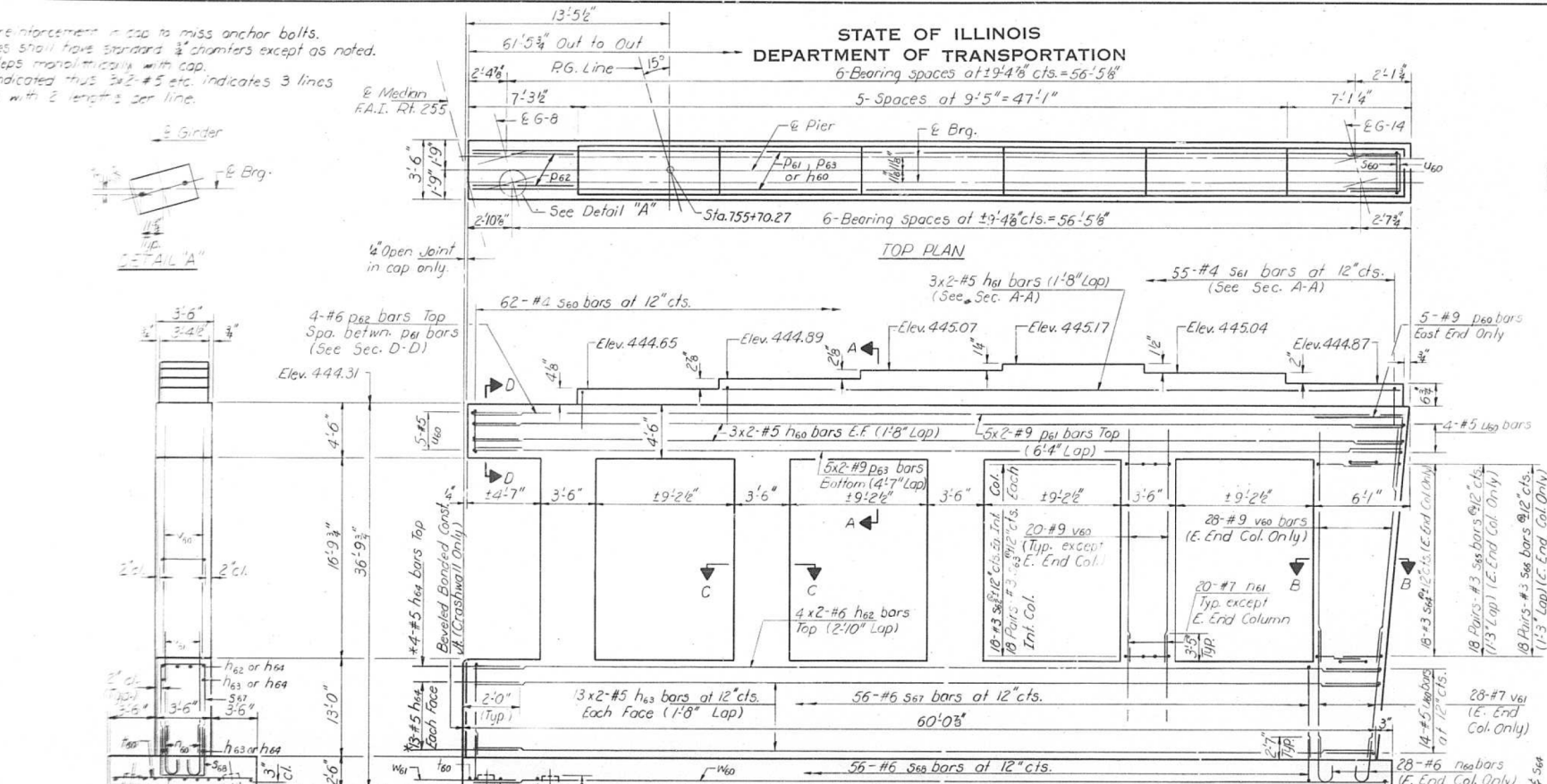


**NOTES:**  
 Space reinforcement in cap to miss anchor bolts.  
 All edges shall have standard 3/4" chamfers except as noted.  
 Four steps monolithically with cap.  
 Bars indicated thus 3x2-#5 etc. indicates 3 lines of bars with 2 lengths per line.

STATE OF ILLINOIS  
 DEPARTMENT OF TRANSPORTATION

ROUTE NO.	SECTION	COUNTY	TOTAL SHEETS	SHEET NO.	SHEET NO.
255	82-4	ST. CLAIR	50	29	27 SHEETS



**BILL OF MATERIAL**

Bar	No.	Size	Length	Shape
h60	12	#5	31'-6"	□
h61	6	#5	23'-0"	□
h62	8	#6	31'-8"	□
h63	52	#5	31'-0"	□
h60	28	#6	5'-4"	□
h61	80	#7	7'-5"	□
P60	5	#9	12'-0"	□
P61	10	#9	33'-9"	□
P62	4	#6	6'-9"	□
P63	10	#9	32'-0"	□
S60	62	#4	15'-5"	□
S61	55	#4	7'-1"	□
S62	72	#3	13'-5"	□
S63	144	#3	8'-7"	□
S64	18	#3	9'-9"	□
S65	36	#3	10'-0"	□
S66	36	#3	8'-0"	□
S67	56	#6	28'-8"	□
S68	56	#6	12'-6"	□
T60	68	#6	10'-3"	□
U60	23	#5	8'-8"	□
V60	108	#9	19'-0"	□
V61	28	#7	16'-4"	□
W60	18	#5	30'-0"	□

**A & B DIMENSIONS**

Bar	A	B
S61	3'-1"	2'-0"
S65	3'-2"	3'-3"
S66	1'-2"	3'-5"
S67	3'-2"	12'-9"
S68	3'-2"	4'-6"
U60	3'-0"	2'-10"

**PILE DATA**  
 Type: Concrete  
 Capacity: 45 Tons  
 Est. Length: 45'  
 No. Required: 24

DESIGNED: <i>William Pennington</i>	EXAMINED: <i>[Signature]</i>
CHECKED: <i>Rick Brantle</i>	PASSED: <i>[Signature]</i>
DRAWN: <i>R. Doty</i>	APPROVED: <i>[Signature]</i>
CHECKED: <i>RAB</i>	DATE: <i>JUN 23 1981</i>

\* h64 and w61 bars are billed on sheet #17

FOR INFORMATIONAL PURPOSES ONLY