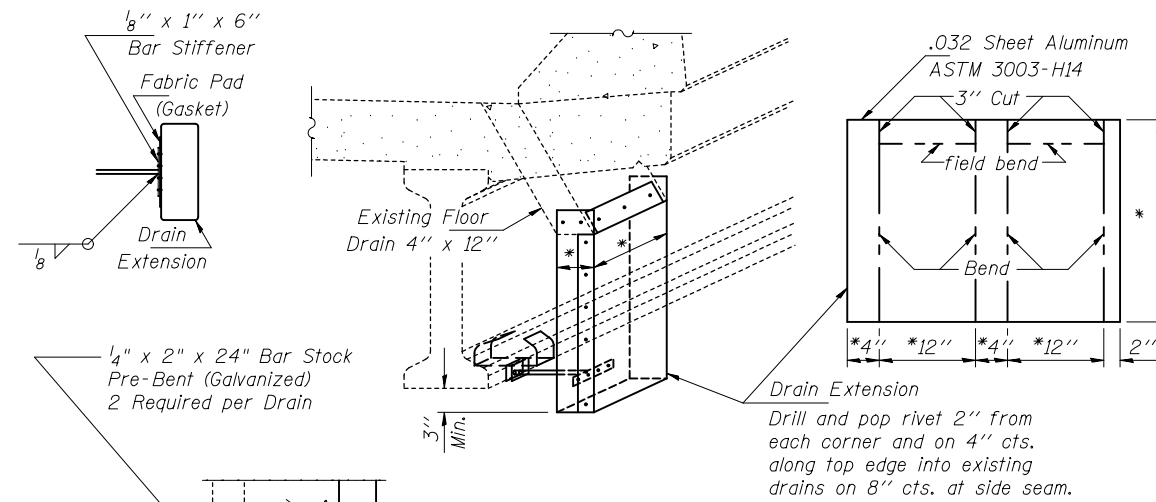
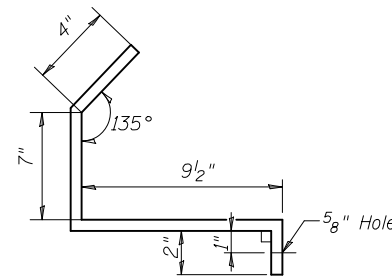


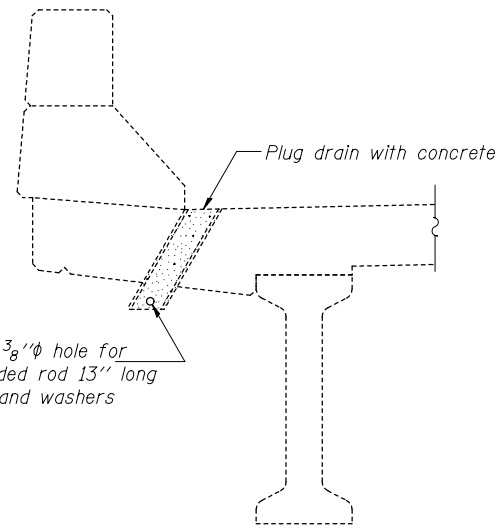
DRAIN DETAIL



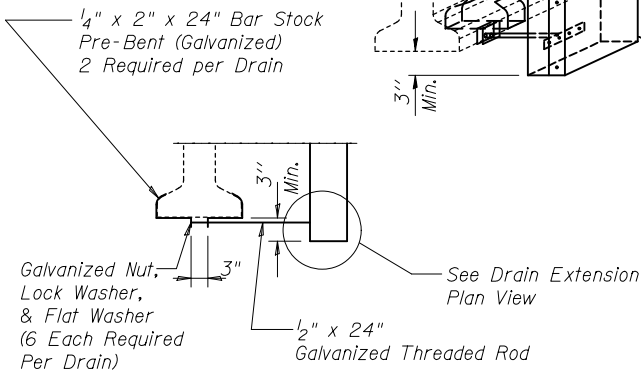
Notes: Pop rivet the 1/8" x 1" bar to Drain Extension. Weld or securely attach rod to both the bracket and bar stiffener. Use 3/16" stainless steel pop rivets of sufficient length.
 * Field measure cut to fit existing drain.
 An aluminum extrusion drain extension of similar dimensions may be substituted.



BRACKET DETAIL

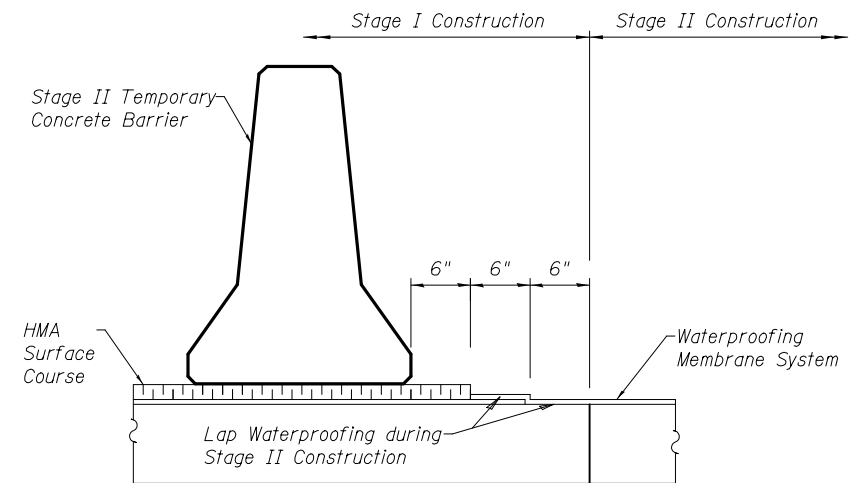


PLUG DRAIN DETAIL



FLOOR DRAIN EXTENSION DETAIL

See Sheet 1 of 9 for locations



WATERPROOFING STAGING

Looking East

DESIGNED - A.Y.V.	EXAMINED	DATE -
CHECKED -	ENGINEER OF STRUCTURAL SERVICES	
DRAWN - A.Y.V.	PASSED	REVISED
CHECKED -	ENGINEER OF BRIDGES AND STRUCTURES	REVISED

STATE OF ILLINOIS
DEPARTMENT OF TRANSPORTATION

DRAIN DETAILS & WATERPROOFING STAGING
SN 042-0019

SHEET NO. 6 OF 9 SHEETS

F.A.P.	SECTION	COUNTY	TOTAL SHEETS	SHEET NO.
325	113BR, 113BR-1	JERSEY	33	30
CONTRACT NO. 76G44				

ILLINOIS FED. AID PROJECT