

STATE OF ILLINOIS
DEPARTMENT OF TRANSPORTATION
DIVISION OF HIGHWAYS

**PROPOSED
HIGHWAY PLANS**

FAP ROUTE 778 (IL 34)
SECTION 3B-3

PROJECT: ACF-0778(008)
BOX CULVERT REPLACEMENT OVER
DITCH

SN 076-7021 (EX.)
SN 076-7054 (PR.)
POPE COUNTY
C-99-046-12

F.A.P. RTE.	SECTION	COUNTY	TOTAL SHEETS	SHEET NO.
778	3B-3	POPE	25	1
ILLINOIS CONTRACT NO. 78315				

INDEX OF SHEETS

- 1 COVER SHEET
- 2 GENERAL NOTES, COMMITMENTS, STANDARDS AND SIGNATURES
- 3-5 SUMMARY OF QUANTITIES
- 6 SCHEDULES
- 7 PLAN AND PROFILE
- 8 EROSION CONTROL PLAN AND HMA SHOULDER DETAIL
- 9 ROW SHEET
- 10 LIMITS OF POROUS GRANULAR EMBANKMENT AT SN 076-7054 AND TYPICAL SECTION WITHIN PAVEMENT REMOVAL
- 11 TEMPORARY AND FINAL SECTIONS
- 12 CONCRETE WINGWALL AND APRON DETAILS
- 14 HALF SIDE ELEVATION
- 15 DISTRICT STANDARDS
- 16-25 CROSS SECTIONS

TRAFFIC DATA

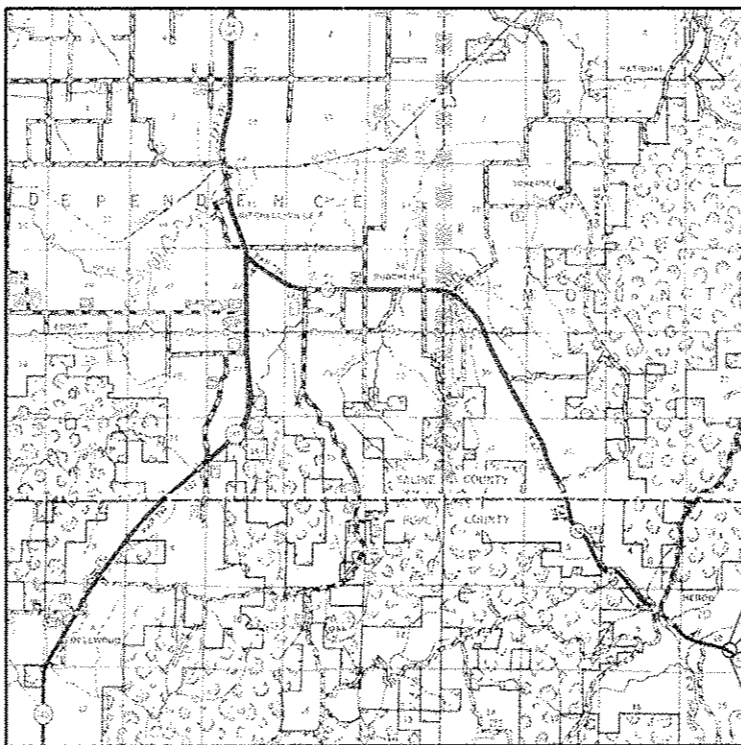
2011 ADT = 2750
36.7 % TRUCKS
POSTED SPEED = 55 MPH

POPE COUNTY ROAD DISTRICT #02

J.U.L.I.E.
JOINT UTILITY LOCATION INFORMATION FOR EXCAVATION
1-800-892-0123
OR 811

PROJECT MANAGER: DAVID PICHE (618) 351-5227
PROJECT ENGINEER: BILL PORTER (618) 351-5224

CONTRACT NO. 78315



PROPOSED PROJECT BEGINS
STA. 755+10

PROPOSED BOX CULVERT STA. 755+46
SN 076-7054
PRECAST REINFORCED CONCRETE BOX CULVERT
SINGLE 7'-0" x 5'-0" x 110'-0"
45° LEFT AHEAD SKEW, 32'-0" CLEAR WIDTH
SN 076-7021 (EX.)
SN 076-7054 (PR.)
IL 34 OVER DITCH

PROPOSED PROJECT ENDS
STA. 755+80

GROSS LENGTH = 70 FT. = 0.01 MILE
NET LENGTH = 70 FT. = 0.01 MILE

D-99-039-12



STATE OF ILLINOIS
DEPARTMENT OF TRANSPORTATION
DIVISION OF HIGHWAYS

SUBMITTED Dec 9 20 13

Arthur L. Keenan
DEPUTY DIRECTOR OF HIGHWAYS, REGION ENGINEER

Jan 24 20 14
John D. Baranzelli PE, EIT
ENGINEER OF DESIGN AND ENVIRONMENT

Jan 24 20 14
Omer Osman PE, EIT
DIRECTOR OF HIGHWAYS, CHIEF ENGINEER

**PRINTED BY THE AUTHORITY
OF THE STATE OF ILLINOIS**

FILE NAME: c:\pwork\pope\pope\78315-ak\c-99-046-12.dgn

GENERAL NOTES

- 1) THE THICKNESS OF HOT-MIX ASPHALT MIXTURE SHOWN ON THE PLANS IS THE NOMINAL THICKNESS. DEVIATIONS FROM THE NOMINAL THICKNESS WILL BE PERMITTED WHEN SUCH DEVIATIONS OCCUR DUE TO IRREGULARITIES IN THE EXISTING SURFACE OR BASE ON WHICH THE HOT-MIX ASPHALT MIXTURE IS PLACED.
- 2) FACTORS USED FOR ESTIMATING PLAN QUANTITIES ARE AS FOLLOWS AND SHALL NOT BE USED FOR THE BASIS OF FINAL QUANTITIES:

ALL HOT MIX ASPHALT	2.016 TONS/CU YD
ALL AGGREGATE	2.05 TONS/CU YD
RIP RAP	1.50 TONS/CU YD
- 3) AT ALL LOCATIONS WHERE EXISTING HOT-MIX ASPHALT OR CONCRETE PAVEMENT JOINS AN EXISTING HOT-MIX ASPHALT OR CONCRETE PAVEMENT, A FULL DEPTH SAWED JOINT SHALL BE CONSTRUCTED. THE COST OF THIS JOINT WILL BE INCLUDED IN THE COST OF THE TYPE OF PAVEMENT BEING CONSTRUCTED.
- 4) THE CONTRACTOR MAY USE HMA PAVEMENT IN LIEU OF THE P.C.C. PAVEMENT 10" SHOWN IN THE PLANS. NO ADDITIONAL COMPENSATION WILL BE ALLOWED. A CALCIUM CHLORIDE ACCELERATOR WILL BE ALLOWED. THE CONCRETE SHALL BE CLASS PP-1 OR PP-2 PER ARTICLE 1020 OF THE STANDARD SPECS.
- 5) COMMITMENTS: POPE COUNTY SHERIFF'S DEPARTMENT SHALL BE CONTACTED PRIOR TO THE 2 WEEK NOTIFICATION SIGNING AND PRIOR TO ANY WORK INVOLVING TRAFFIC CONTROL AND PROTECTION THAT AFFECTS THE PUBLIC. PHONE: 1-618-683-4321
- 6) REMOVAL OF EXISTING AGGREGATE SHOULDERS SHALL BE INCLUDED IN THE COST OF EARTH EXCAVATION.

STANDARDS

000001-06	STANDARD SYMBOLS, ABBREVIATIONS AND PATTERNS
001001-02	AREAS OF REINFORCEMENT BARS
001006	DECIMAL OF AN INCH AND OF A FOOT
420001-07	PAVEMENT JOINTS
420601-05	24' PCC PAVEMENT
420701-02	PAVEMENT FABRIC
630301-06	SHOULDER WIDENING FOR TYPE 1 (SPECIAL) GUARDRAIL TERMINALS
635006-03	REFLECTOR AND TERMINAL MARKER PLACEMENT
635011-02	REFLECTOR MARKER AND MOUNTING DETAILS
642006	SHOULDER RUMBLE STRIPS, 8 in.
701001-02	OFF-RD OPERATIONS, 2L, 2W, MORE THAN 15' AWAY
701006-05	OFF-RD OPERATIONS, 2L, 2W, 15' TO 24" FROM PAVEMENT EDGE
701201-04	LANE CLOSURE, 2L, 2W, DAY ONLY, FOR SPEEDS > 45 MPH
701901-03	TRAFFIC CONTROL DEVICES
780001-04	TYPICAL PAVEMENT MARKINGS
BLR 21-9	TYPICAL APPLICATION OF TRAFFIC CONTROL DEVICES FOR CONSTRUCTION ON RURAL LOCAL HIGHWAYS

COMMITMENTS

NO TREE CLEARING SHALL BE PERMITTED FROM APRIL 1 TO NOVEMBER 15.

MIXTURE REQUIREMENTS

LOCATION(S):	HOT-MIX ASPHALT SURFACE COURSE
MIXTURE USE(S):	HOT-MIX ASPHALT SURFACE COURSE, MIX C, N90
AC/PG:	PG64-22
ABR % (MAX):	SEE BDE SPECIAL PROVISION
DESIGN AIR VOIDS:	4.0%, 90 GYRATION DESIGN
MIXTURE COMPOSITION: (GRADATION MIXTURE):	IL-9.5mm
FRICTION AGGREGATE:	C SURFACE

LOCATION(S):	HOT-MIX ASPHALT BINDER COURSE & HOT-MIX ASPHALT SHOULDERS
MIXTURE USE(S):	HOT-MIX ASPHALT BINDER COURSE, N90, IL-19.0mm FINE GRADE
AC/PG:	PG64-22
ABR % (MAX):	SEE BDE SPECIAL PROVISION
DESIGN AIR VOIDS:	4.0%, 90 GYRATION DESIGN
MIXTURE COMPOSITION: (GRADATION MIXTURE):	IL-19.0mm FINE GRADE
FRICTION AGGREGATE:	NONE

Prepared By:	<i>Joe Blankenship</i> DISTRICT STUDIES & PLANS ENGINEER
Examined By:	<i>[Signature]</i> DISTRICT LAND ACQUISITION ENGINEER
Examined By:	<i>Cassie Nelson</i> DISTRICT PROGRAM DEVELOPMENT ENGINEER
Examined By:	<i>[Signature]</i> DISTRICT OPERATIONS ENGINEER
Examined By:	<i>[Signature]</i> DISTRICT PROJECT IMPLEMENTATION ENGINEER
Examined By:	<i>Douglas Deuis</i> DISTRICT CONSTRUCTION ENGINEER
Examined By:	<i>Bruce [Signature]</i> DISTRICT MATERIALS ENGINEER

SUMMARY OF QUANTITIES

CODE NUMBER	ITEM DESCRIPTION	UNIT	CONSTRUCTION TYPE CODE: 0040 FUNDING: 80% FED 20% STATE
20100110	TREE REMOVAL (6 TO 15 UNITS DIAMETER)	UNIT	6
20100210	TREE REMOVAL (OVER 15 UNITS DIAMETER)	UNIT	1
20200100	EARTH EXCAVATION	CU YD	1222
20300100	CHANNEL EXCAVATION	CU YD	96
20400800	FURNISHED EXCAVATION	CU YD	183
20700220	POROUS GRANULAR EMBANKMENT	CU YD	976
25000200	SEEDING, CLASS 2	ACRE	0.43
25000400	NITROGEN FERTILIZER NUTRIENT	POUND	39
25000500	PHOSPHORUS FERTILIZER NUTRIENT	POUND	39
25000600	POTASSIUM FERTILIZER NUTRIENT	POUND	39
25000700	AGRICULTURAL GROUND LIMESTONE	TON	0.9
25100630	EROSION CONTROL BLANKET	SQ YD	2089
28000250	TEMPORARY EROSION CONTROL SEEDING	POUND	43
28000305	TEMPORARY DITCH CHECKS	FOOT	50

14

FILE NAME : c:\pwork\pados\halstead\p03250477	USER NAME : halsteadr	DESIGNED -	REVISED -	STATE OF ILLINOIS DEPARTMENT OF TRANSPORTATION	SUMMARY OF QUANTITIES	F.A.P. RTE.	SECTION	COUNTY	TOTAL SHEETS	SHEET NO.	
	315-sha-cvr-eq-index.dgn	DRAWN -	REVISED -			778	38-3	POPE	25	3	
	PLOT SCALE = 100.0000' / in.	CHECKED -	REVISED -			CONTRACT NO. 78315					
Default	PLOT DATE = 12/5/2012	DATE -	REVISED -			ILLINOIS FED. AID PROJECT					

SUMMARY OF QUANTITIES - CONT

CODE NUMBER	ITEM DESCRIPTION	UNIT	CONSTRUCTION TYPE CODE: 0040 FUNDING: 80% FED 20% STATE
28000400	PERIMETER EROSION BARRIER	FOOT	641
28100107	STONE RIPRAP, CLASS A4	SQ YD	89
28200200	FILTER FABRIC	SQ YD	89
42000500	PORTLAND CEMENT CONCRETE PAVEMENT 10"	SQ YD	187
42001200	PAVEMENT FABRIC	SQ YD	187
44000100	PAVEMENT REMOVAL	SQ YD	187
48203029	HOT-MIX ASPHALT SHOULDERS, 8"	SQ YD	392
50102400	CONCRETE REMOVAL	CU YD	78.3
50800205	REINFORCEMENT BARS, EPOXY COATED	POUND	980
54003000	CONCRETE BOX CULVERTS	CU YD	29.3
54010705	PRECAST CONCRETE BOX CULVERTS 7' X 5'	FOOT	110
* 63000001	STEEL PLATE BEAM GUARDRAIL, TYPE A, 6 FOOT POSTS	FOOT	250
* 63100167	TRAFFIC BARRIER TERMINAL, TYPE 1 (SPECIAL) TANGENT	EACH	4
66600105	FURNISHING AND ERECTING RIGHT OF WAY MARKERS	EACH	16

* SPECIALTY ITEM

FILE NAME =	USER NAME = halesoadt	DESIGNED -	REVISED -	STATE OF ILLINOIS DEPARTMENT OF TRANSPORTATION	SUMMARY OF QUANTITIES	F.A.P. RTE.	SECTION	COUNTY	TOTAL SHEETS	SHEET NO.	
\\pwwork\pwwork\halesoadt\00325547\7	315-sha-cvr.ssq.in	DRAWN -	REVISED -			778	3B-3	POPE	25	4	
Default	PLOT SCALE = 100.0000 1" = 100'	CHECKED -	REVISED -			CONTRACT NO. 78315					
	PLOT DATE = 12/5/2012	DATE -	REVISED -			ILLINOIS FED. AID PROJECT					

SUMMARY OF QUANTITIES - CONT

CODE NUMBER	ITEM DESCRIPTION	UNIT	CONSTRUCTION TYPE CODE: 0040 FUNDING: 80% FED 20% STATE
67100100	MOBILIZATION	L SUM	1
70100450	TRAFFIC CONTROL AND PROTECTION, STANDARD T01201	L SUM	1
70101830	TRAFFIC CONTROL AND PROTECTION, STANDARD BLR 21	L SUM	1
70103815	TRAFFIC CONTROL SURVEILLANCE	CAL DA	4
70106800	CHANGEABLE MESSAGE SIGN	CAL MO	2
70300220	TEMPORARY PAVEMENT MARKING - LINE 4"	FOOT	224
70301000	WORK ZONE PAVEMENT MARKING REMOVAL	SO FT	75
* 78001110	PAINT PAVEMENT MARKING - LINE 4"	FOOT	224
* 78200410	GUARDRAIL MARKERS, TYPE A	EACH	6
* 78201000	TERMINAL MARKER - DIRECT APPLIED	EACH	4

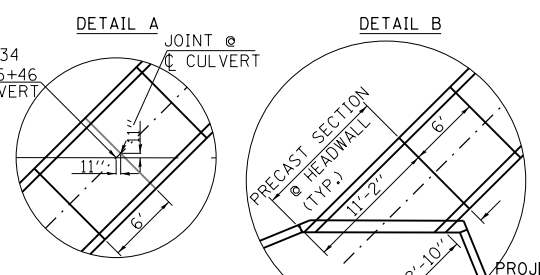
*
*
*
10

* SPECIALTY ITEM

FILE NAME :	USER NAME : halssteadr	DESIGNED -	REVISED -	STATE OF ILLINOIS DEPARTMENT OF TRANSPORTATION	SUMMARY OF QUANTITIES	F.A.P. RTE.	SECTION	COUNTY	TOTAL SHEETS	SHEET NO.	
ct:\ps_work\psidot\halssteadr\0325547\78315-shl-e-vr-log.index.dgn	DRAWN -	REVISED -	778			3B-3	POPE	25	5		
PLOT SCALE * 100.0000' / 1" /	CHECKED -	REVISED -	CONTRACT NO. 78315								
Default	DATE -	REVISED -	ILLINOIS FED. AID PROJECT								
						SCALE:	SHEET	OF	SHEETS	STA.	TO STA.

PAVING SCHEDULE				
STATION TO STATION	PAVEMENT REMOVAL	PCC PAVEMENT, 10"	PAVEMENT FABRIC	HMA SHOULDERS, 8"
	SQ YD	SQ YD	SQ YD	SQ YD
STA. 755+10 TO STA. 755+80	187	187	187	
LT. STA. 755+07.6 TO LT. STA. 755+78.2				51
LT. STA. 755+78.2 TO LT. STA. 757+03.2				94
LT. STA. 757+03.2 TO LT. STA. 757+73.7				51
RT. STA. 753+19.0 TO RT. STA. 753+89.5				51
RT. STA. 753+89.5 TO RT. STA. 755+14.5				94
RT. STA. 755+14.5 TO RT. STA. 755+85.0				51
TOTALS	187	187	187	392

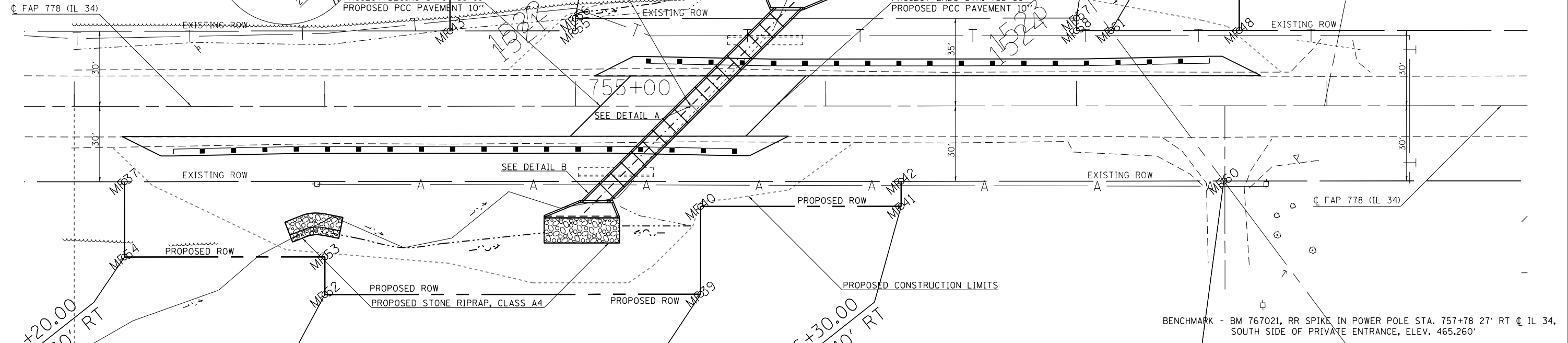
GUARDRAIL SCHEDULE		
STATION TO STATION	SPBGR, TY A	TRAFFIC BARRIER TERMINAL, TY 1 SPL TANGENT
	FOOT	EACH
LT. STA. 755+78.0 TO LT. STA. 757+03.0	125	
RT. STA. 753+89.5 TO RT. STA. 755+14.5	125	
LT. STA. 755+28.0 TO LT. STA. 755+78.0		1
LT. STA. 757+03.0 TO LT. STA. 757+53.0		1
RT. STA. 753+39.5 TO RT. STA. 753+89.5		1
RT. STA. 755+14.5 TO RT. STA. 755+64.5		1
TOTALS	250	4



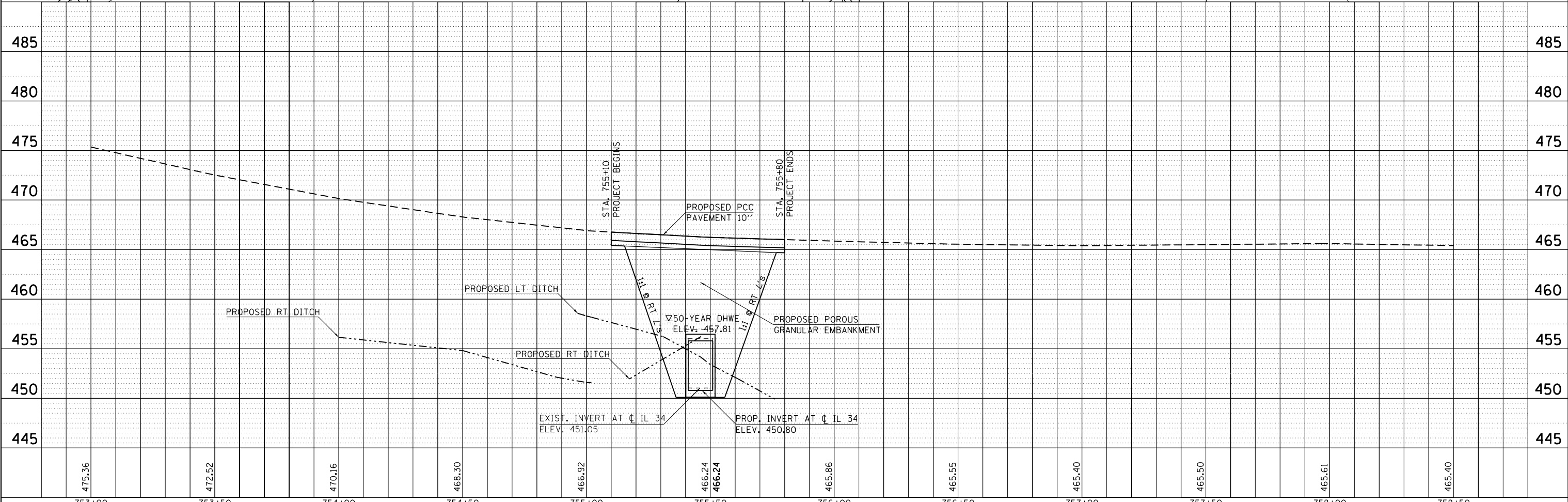
SN 076-7094
 PROPOSED PRECAST SINGLE
 7' X 5' BOX CULVERT
 110' END TO END BARREL ALONG SKEW
 32' CLEAR WIDTH, 45° SKEW
 CL IL 34 STA. 755+46

SN 076-7021
 EXISTING 7' X 5' BOX CULVERT
 79'-7 1/2" END TO END BARREL ALONG SKEW
 45° SKEW, CL IL 34 STA. 755+46

DATE	
BY	
PLAN	
SURVEYED	
PLOTTED	
NOTE BOOK	
NO.	
ALIGNED	
CHECKED	
FILE NAME	

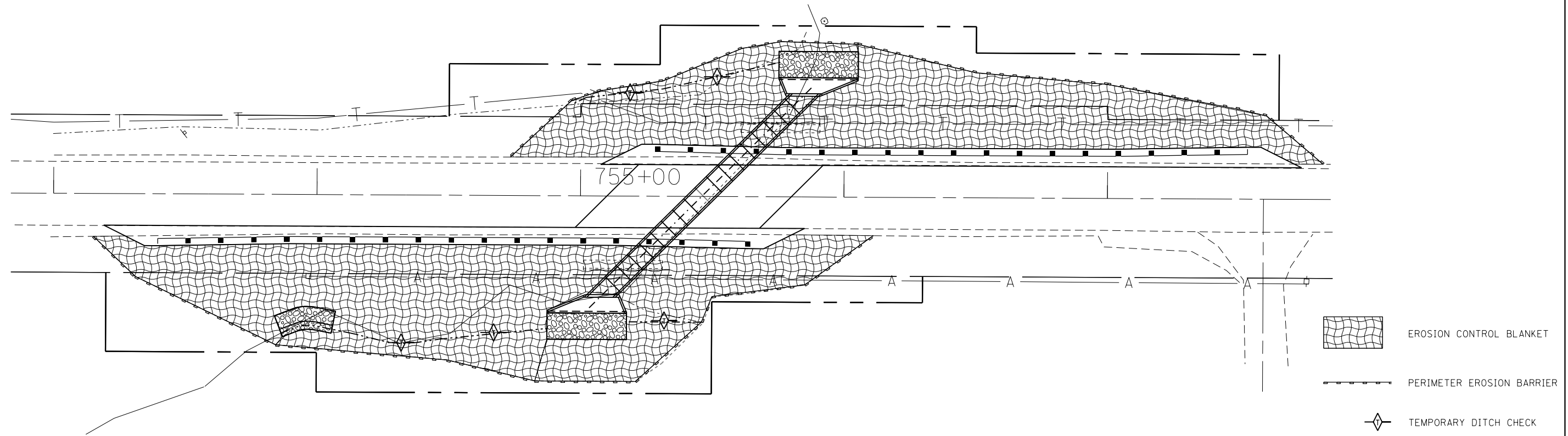


DATE	
BY	
PROFILE	
SURVEYED	
PLOTTED	
NOTE BOOK	
NO.	
GRADES CHECKED	
STRUCTURE	
NOTATIONS CHECKED	

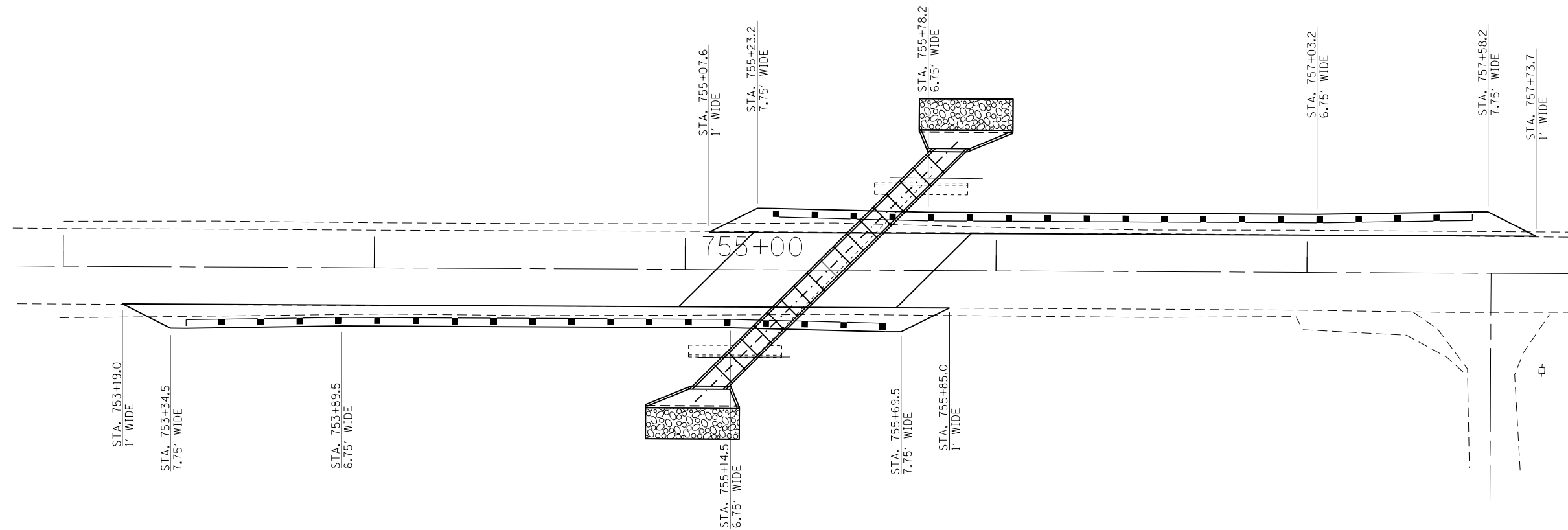


FILE NAME =	USER NAME =	DESIGNED -	REVISIED -	STATE OF ILLINOIS DEPARTMENT OF TRANSPORTATION	PLAN & PROFILE		F.A.P. RTE.	SECTION	COUNTY	TOTAL SHEETS	SHEET NO.
c:\pwork\pwork\helstead\helstead\0325547\783	5-shct-plnpr.f.dgn	DRAWN -	REVISIED -		778	3B-3	POPE	25	7		
Default	PLOT SCALE = 40.0000' / in.	CHECKED -	REVISIED -		CONTRACT NO. 78315						
	PLOT DATE = 12/5/2013	DATE -	REVISIED -		ILLINOIS FED. AID PROJECT						

EROSION CONTROL PLAN



BITUMINOUS SHOULDER DETAIL



FILE NAME =	USER NAME = halsteadtw	DESIGNED -	REVISED -
ci:\pw\work\p\idot\halsteadtw\d0325547\78315-shtb-tpj_sch_tres.dgn		DRAWN -	REVISED -
	PLOT SCALE = 40.0000' / in.	CHECKED -	REVISED -
Default	PLOT DATE = 12/5/2013	DATE -	REVISED -

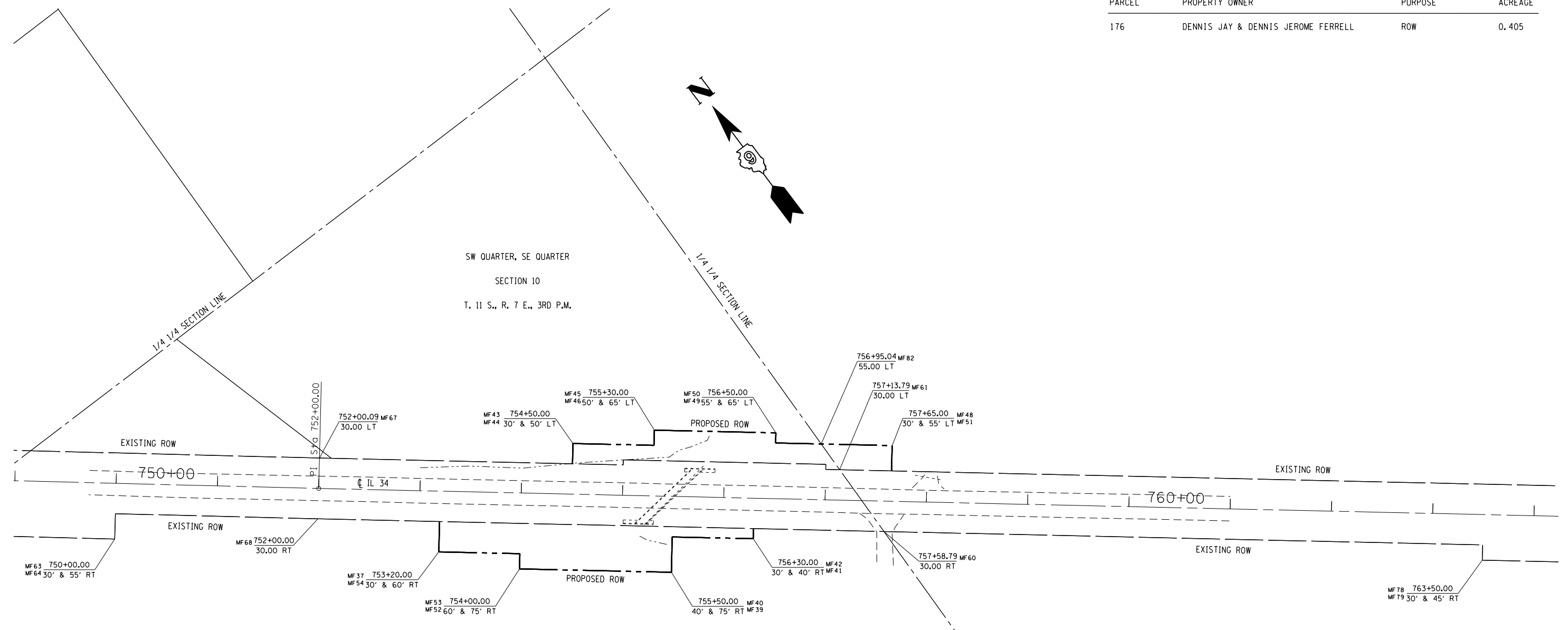
**STATE OF ILLINOIS
DEPARTMENT OF TRANSPORTATION**

EROSION CONTROL PLAN & HMA SHOULDER DETAIL

SCALE: SHEET OF SHEETS STA. TO STA.

F.A.P. RTE.	SECTION	COUNTY	TOTAL SHEETS	SHEET NO.
778	3B-3	POPE	25	8
CONTRACT NO. 78315				
ILLINOIS FED. AID PROJECT				

PARCEL	PROPERTY OWNER	PURPOSE	ACREAGE
176	DENNIS JAY & DENNIS JEROME FERRELL	ROW	0.405



SW QUARTER, SE QUARTER
SECTION 10
T. 11 S., R. 7 E., 3RD P.M.

SW QUARTER, SE QUARTER
SECTION 10
T. 11 S., R. 7 E., 3RD P.M.

COORDINATE LIST

PT#	NORTHING	EASTING
MF 37	329935.63	959413.90
MF 39	329757.81	959566.55
MF 40	329785.28	959588.23
MF 41	329735.72	959651.03
MF 42	329743.57	959657.23
MF 43	329902.19	959553.11
MF 44	329917.88	959565.50
MF 45	329868.32	959628.30
MF 46	329880.09	959637.59
MF 48	329707.02	959800.37
MF 49	329805.74	959731.78
MF 50	329797.89	959725.59
MF 51	329726.64	959815.86
MF 52	329850.75	959448.81
MF 53	329862.52	959458.10
MF 54	329912.09	959395.31
MF 60	329663.77	959758.32
MF 61	329738.75	959760.17
MF 63	330134.40	959163.00
MF 64	330114.82	959147.46
MF 67	330057.03	959356.94
MF 68	330010.04	959319.64
MF 78	329297.47	960222.38
MF 79	329285.70	960213.09
MF 82	329769.99	959760.94



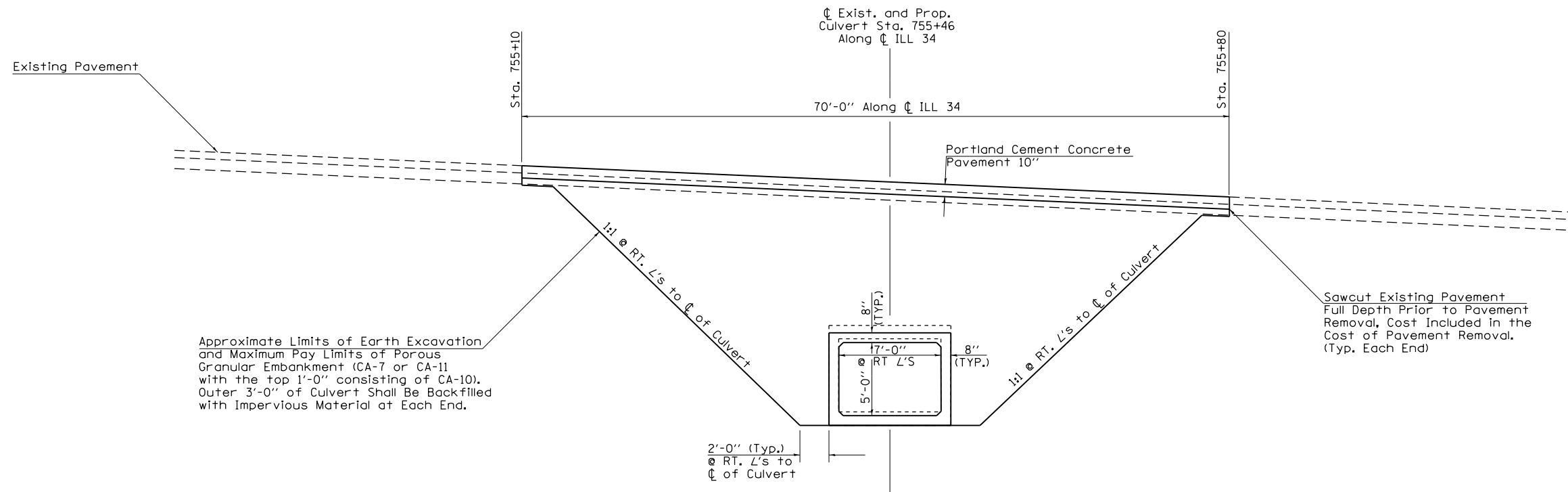
JAMES A. THOMPSON
ILLINOIS PROFESSIONAL LAND SURVEYOR

Current license expires 11/2014.

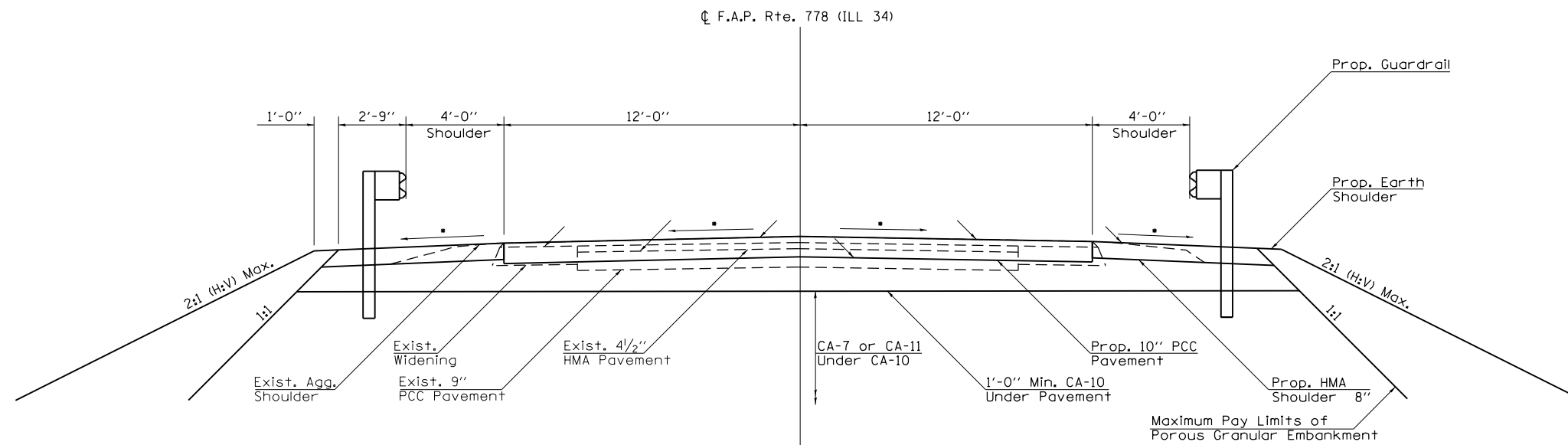
This professional service conforms to the current Illinois minimum standards for a boundary survey.

FILE NAME =	USER NAME = halsteadw	DESIGNED -	REVISED -	STATE OF ILLINOIS DEPARTMENT OF TRANSPORTATION	R-99-015-12 RIGHT OF WAY PLANS/SN076-7021	F.A.P. RTE.	SECTION	COUNTY	TOTAL SHEETS	SHEET NO.	
Default	12/5/2013	DRAWN -	REVISED -			IL 34	3B-3	POPE	25	9	
		CHECKED -	REVISED -			SCALE: 1" = 100' SHEET 1 OF 1 SHEETS STA. 749+00.00 TO STA. 764+00.00					
		DATE -	REVISED -			CONTRACT NO. 78315 ILLINOIS FED. AID PROJECT					

LIMITS OF POROUS GRANULAR EMBANKMENT

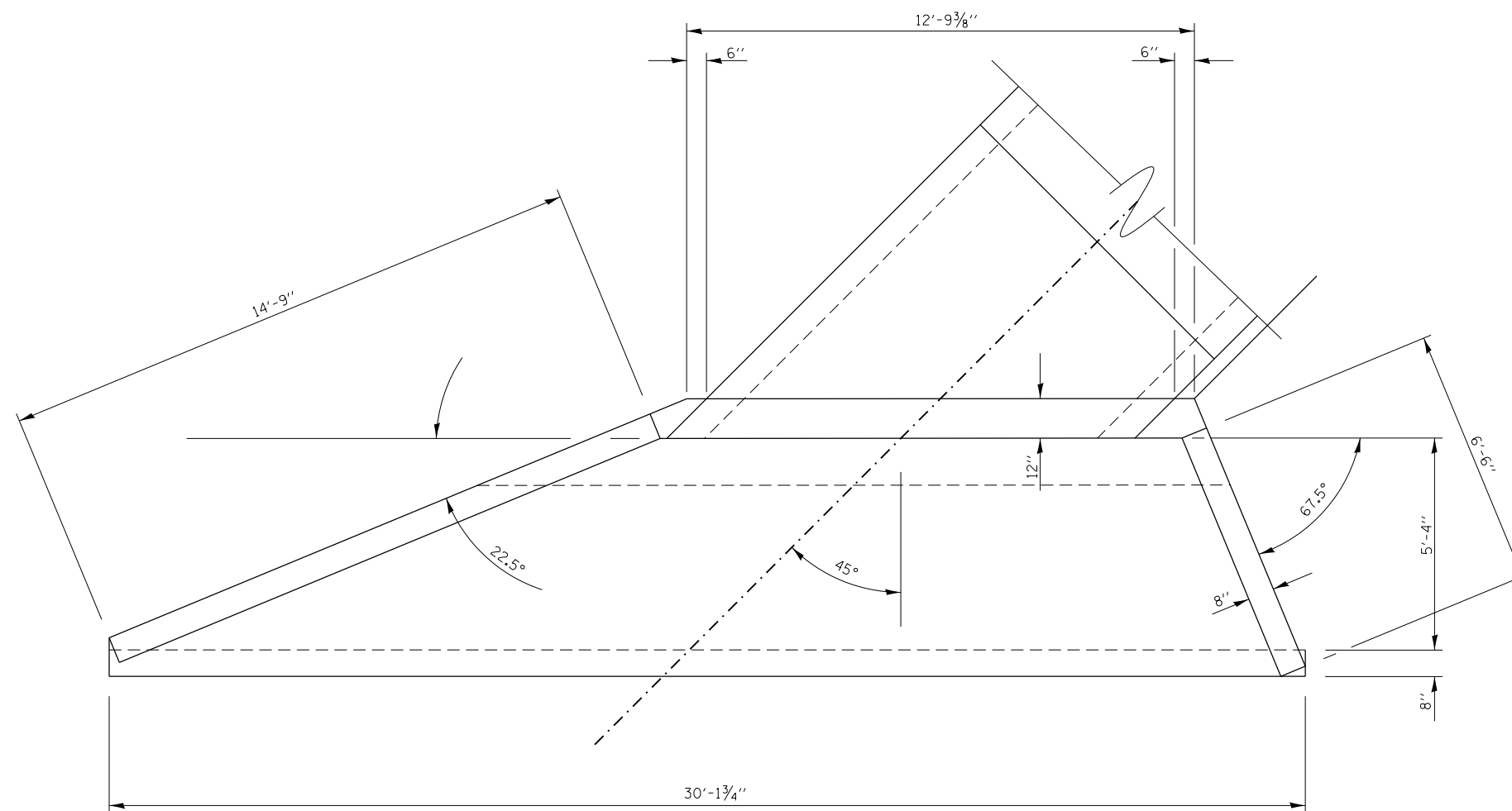
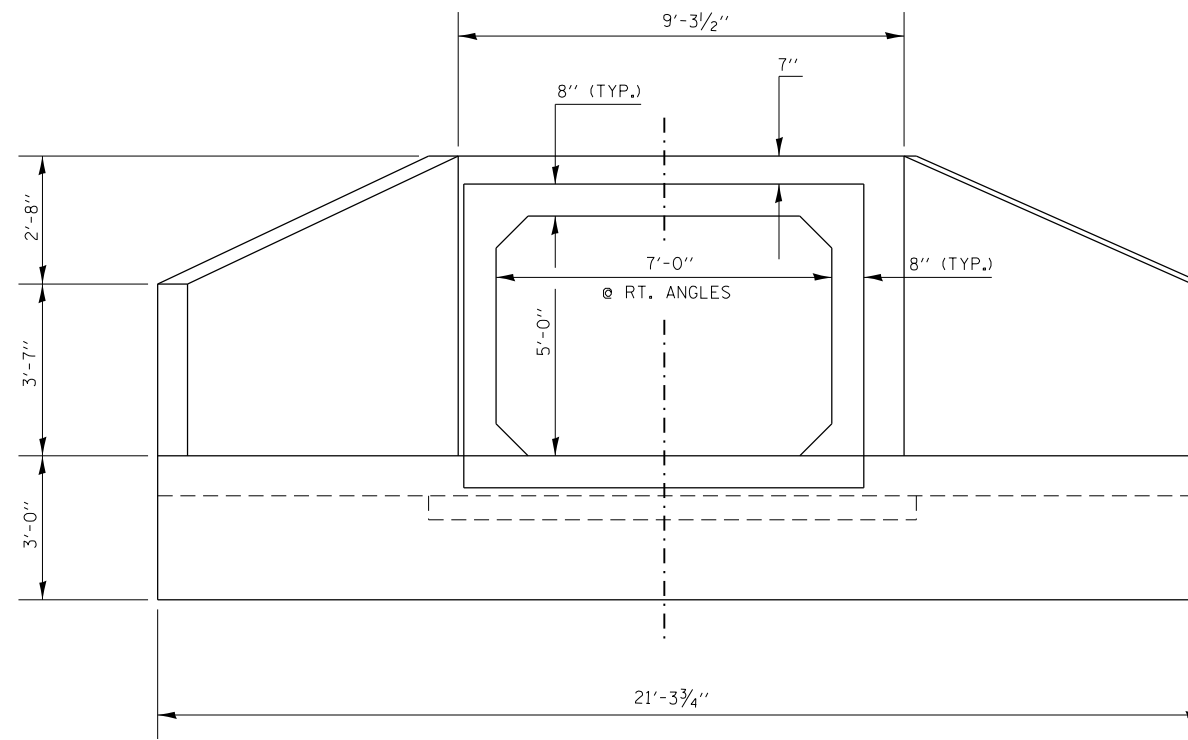


TYPICAL SECTION WITHIN PAVEMENT REMOVAL



• Match Existing Cross Slopes

FILE NAME =	USER NAME = halsteadtw	DESIGNED -	REVISED -	STATE OF ILLINOIS DEPARTMENT OF TRANSPORTATION	LIMITS OF POROUS GRANULAR EMBANKMENT AT SN 076-7054 AND SECTION WITHIN PAVEMENT REMOVAL	F.A.P. RTE.	SECTION	COUNTY	TOTAL SHEETS	SHEET NO.	
Default	12/5/2013	DRAWN -	REVISED -			778	3B-3	POPE	25	10	
		CHECKED -	REVISED -			CONTRACT NO. 78315					
		DATE -	REVISED -			SCALE:	SHEET	OF	SHEETS	STA.	TO



CONCRETE WINGWALL AND APRON DETAILS

(TYPICAL EACH END)

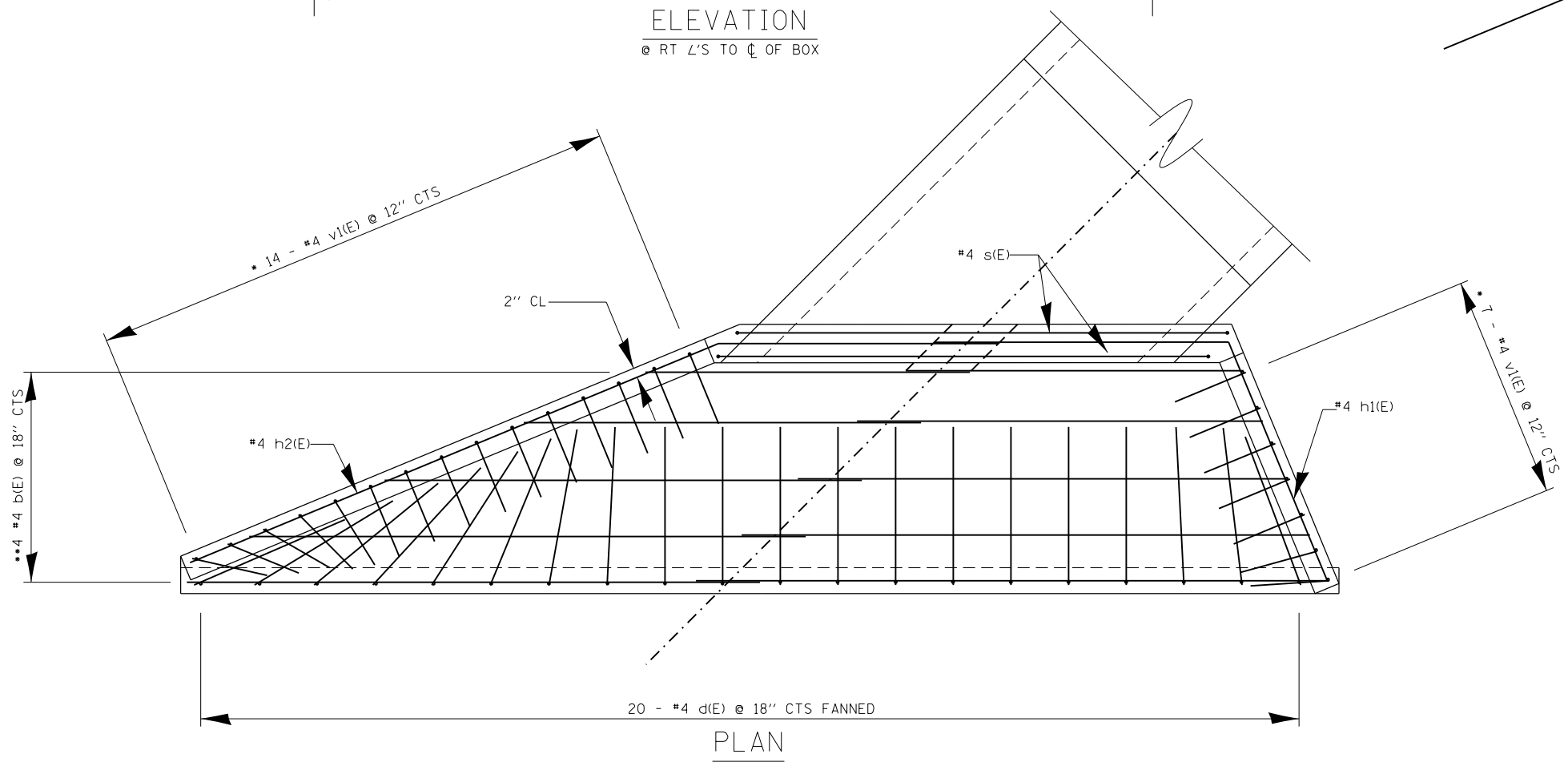
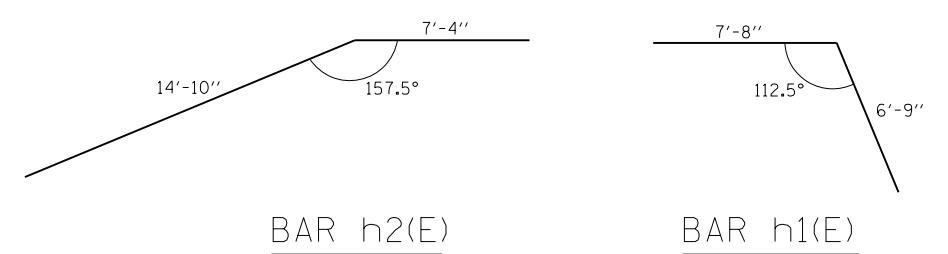
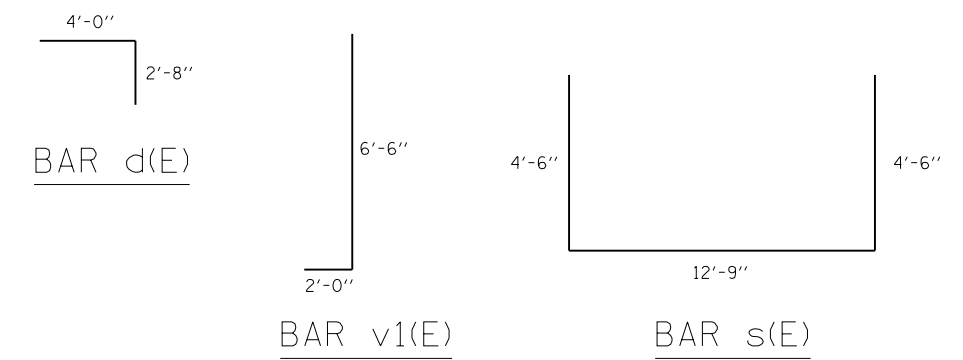
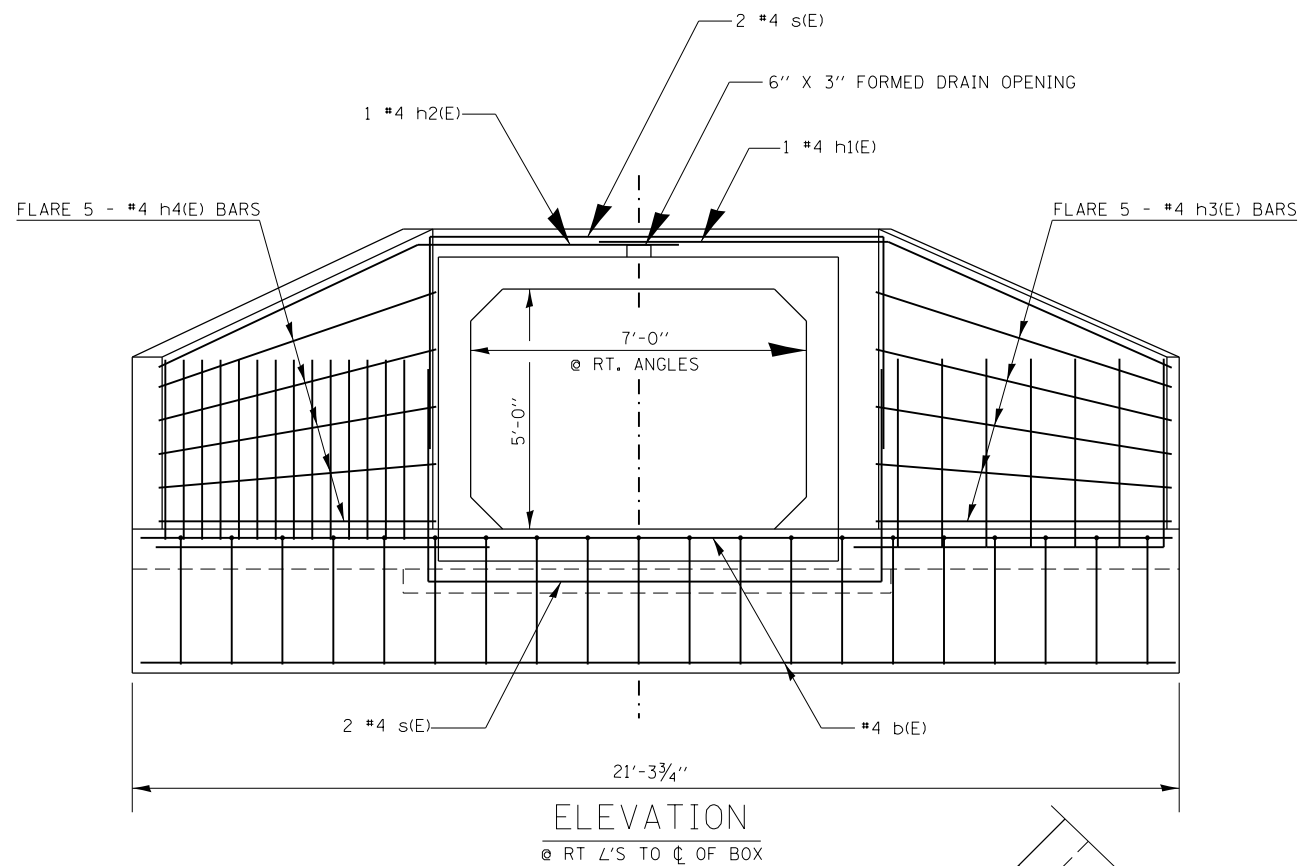
FILE NAME =	USER NAME = halsteadtw	DESIGNED -	REVISED -
c:\pwork\work\pwork\halsteadtw\d0325547\78315-shrb-tyr-sch-tyr.dgn		DRAWN -	REVISED -
Default	PLOT SCALE = 8.0000' / in.	CHECKED -	REVISED -
	PLOT DATE = 12/5/2013	DATE -	REVISED -

**STATE OF ILLINOIS
DEPARTMENT OF TRANSPORTATION**

CONCRETE WINGWALL & APRON DETAILS

SCALE: SHEET OF SHEETS STA. TO STA.

F.A.P. RTE.	SECTION	COUNTY	TOTAL SHEETS	SHEET NO.
778	3B-3	POPE	25	12
CONTRACT NO. 78315				
ILLINOIS FED. AID PROJECT				



BILL OF MATERIAL

BAR	No.	SIZE	LENGTH	SHAPE
b(E)	24	#4	15'-9"	—
d(E)	40	#4	6'-8"	U
h1(E)	2	#4	14'-5"	∩
h2(E)	2	#4	22'-2"	∩
h3(E)	10	#4	6'-9"	—
h4(E)	10	#4	15'-0"	—
s(E)	8	#4	21'-9"	U
v1(E)	42	#4	8'-6"	J
CONCRETE BOX CULVERTS			CU. YD.	29.3
REINFORCEMENT BARS EPOXY COATED			POUND	980

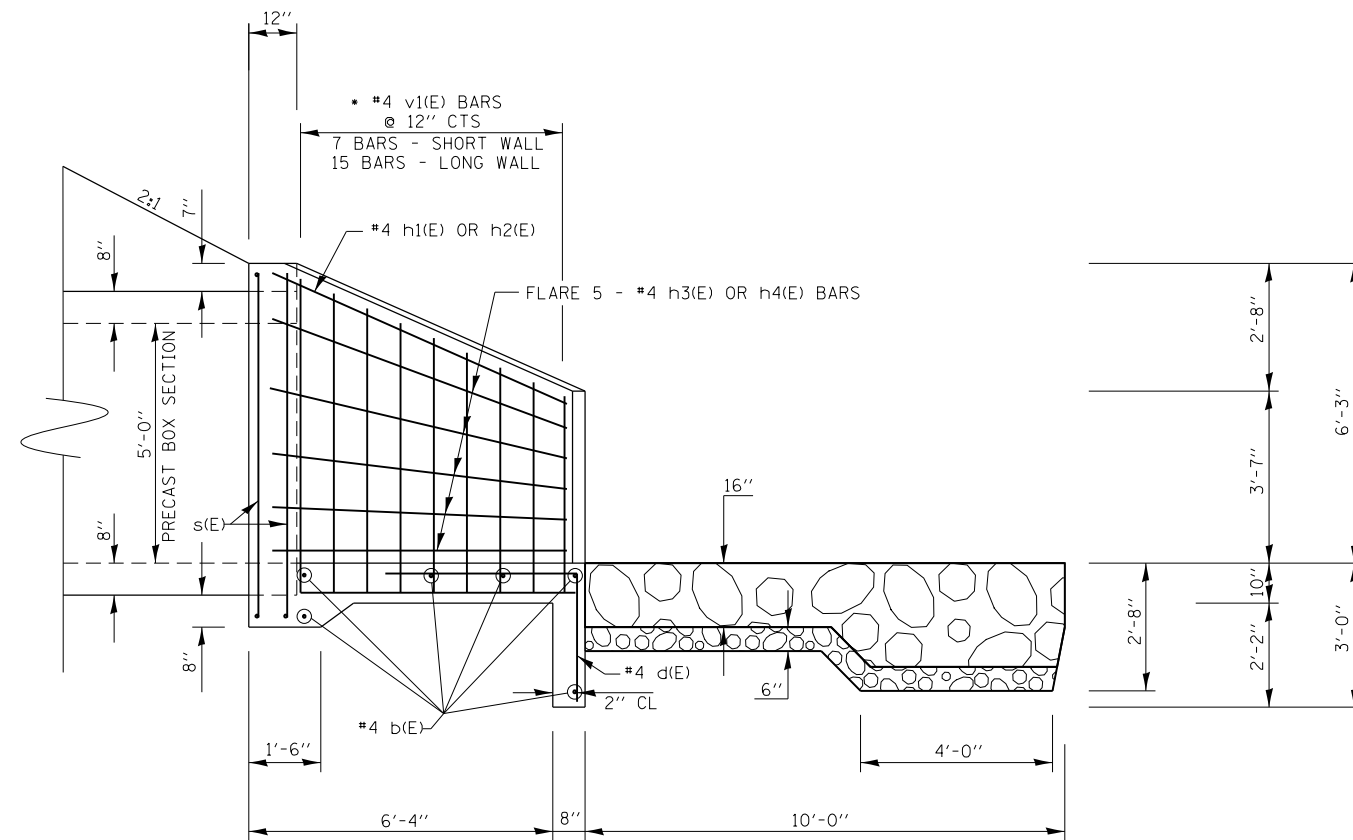
DESIGN STRESSES
 fy = 60,000 psi
 f'c = 3,500 psi

MINIMUM BAR LAP
 #4 = 1'-8"
 • CUT OR BEND TO FIT IN FIELD
 •• LAP BARS WHERE NECESSARY

NOTE: BILL OF MATERIAL SCHEDULE IS TOTAL FOR BOTH ENDS

WORK THIS SHEET WITH SHEET X OF XX
 REINFORCEMENT BARS DESIGNATED (E) SHALL BE EPOXY COATED.
 REINFORCEMENT BARS SHALL CONFORM TO THE REQUIREMENTS OF ASTM A 706 GRADE 60.
 EXPOSED EDGES SHALL BE BEVELED 3/4".

CONCRETE WINGWALL AND APRON REINFORCEMENT DETAILS
 (TYPICAL EACH END)



HALF SIDE ELEVATION

(AT RT ANGLES TO ϕ ROADWAY)

FILE NAME =	USER NAME = halsteadtw	DESIGNED -	REVISED -
c:\pw\work\p\idot\halsteadtw\d0325547\78315-shtb-tp-sch-.ties.dgn		DRAWN -	REVISED -
Default	PLOT SCALE = 4.0000' / in.	CHECKED -	REVISED -
	PLOT DATE = 12/5/2013	DATE -	REVISED -

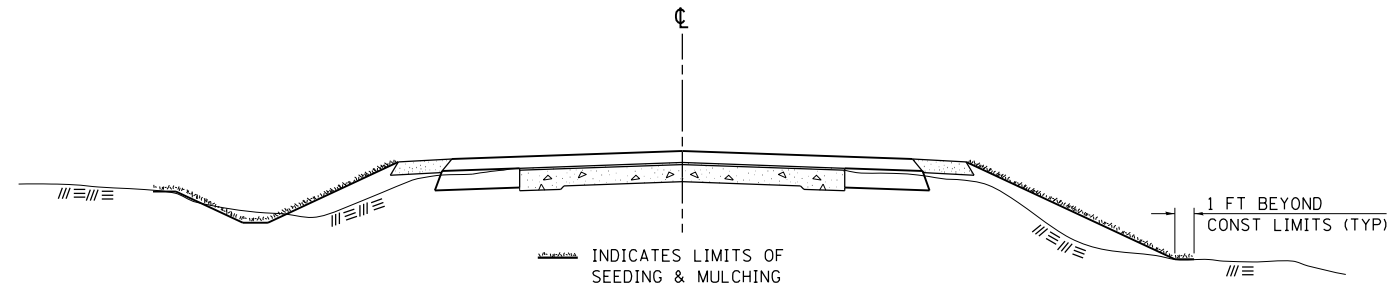
**STATE OF ILLINOIS
DEPARTMENT OF TRANSPORTATION**

HALF SIDE ELEVATION

SCALE: SHEET OF SHEETS STA. TO STA.

F.A.P. RTE.	SECTION	COUNTY	TOTAL SHEETS	SHEET NO.
778	3B-3	POPE	25	14
			78315	
ILLINOIS FED. AID PROJECT				

SEEDING & MULCHING



GENERAL NOTES

IN GENERAL, ALL EARTH SURFACES DISTURBED DURING CONSTRUCTION OPERATIONS SHALL BE SEEDED AND MULCHED UPON COMPLETION OF ALL GRADING OPERATIONS.

FERTILIZER NUTRIENTS AND LIMESTONE SHALL BE APPLIED TO ALL SEEDED AREAS.

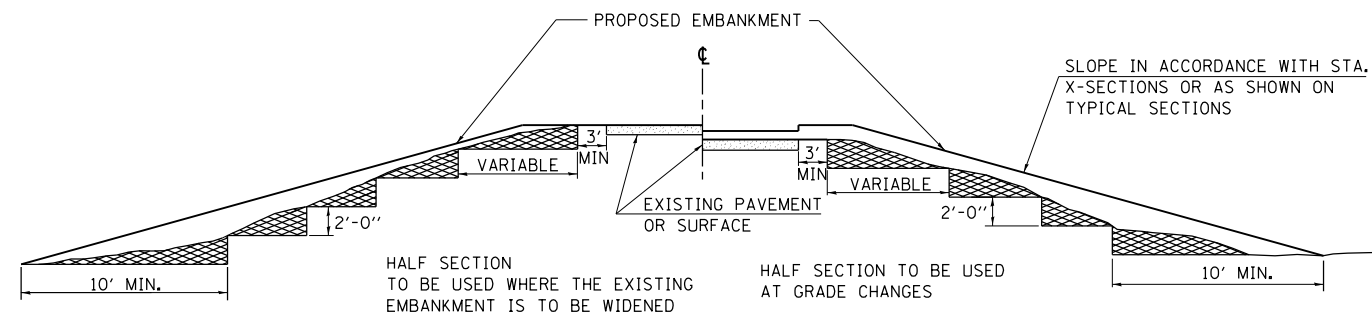
THE RATES OF APPLICATION OF FERTILIZER, MULCH AND LIMESTONE SHALL BE AS SPECIFIED IN THE SPECIAL PROVISIONS.

SECTIONS 250 AND 251 OF THE STANDARD SPECIFICATIONS SHALL GOVERN THIS WORK EXCEPT AS SPECIFIED HEREIN OR AS NOTED IN THE SPECIAL PROVISIONS.

REVISIONS	
REDRAWN	2-15-89
REVISED	8-15-94
REVISED	6-3-99
REVISED	3-27-08

STD. 9-12

TYPICAL CROSS SECTION SHOWING STEP CONSTRUCTION ON EXISTING FILL



MATERIAL TO BE REMOVED AND REPLACED IN THE EMBANKMENT IN ACCORDANCE WITH ART. 205.04 OF THE STANDARD SPECIFICATION. COST TO BE INCLUDED IN THE VARIOUS ITEMS OF EXCAVATION AND NO ADDITIONAL COMPENSATION WILL BE ALLOWED BECAUSE OF THIS WORK.

REVISIONS	
REDRAWN	2-15-89
REVISED	8-15-94
CHECKED	6-3-99
RESIZED	5-7-08

STD. 9-16

FILE NAME =	USER NAME = halsteadtw	DESIGNED -	REVISED -
ct:\pw\work\p\dot\halsteadtw\d0325547\78315-shtb-tp-sch-tnes.dgn		DRAWN -	REVISED -
Default	PLOT SCALE = 100.0000' / in.	CHECKED -	REVISED -
	PLOT DATE = 12/5/2013	DATE -	REVISED -

**STATE OF ILLINOIS
DEPARTMENT OF TRANSPORTATION**

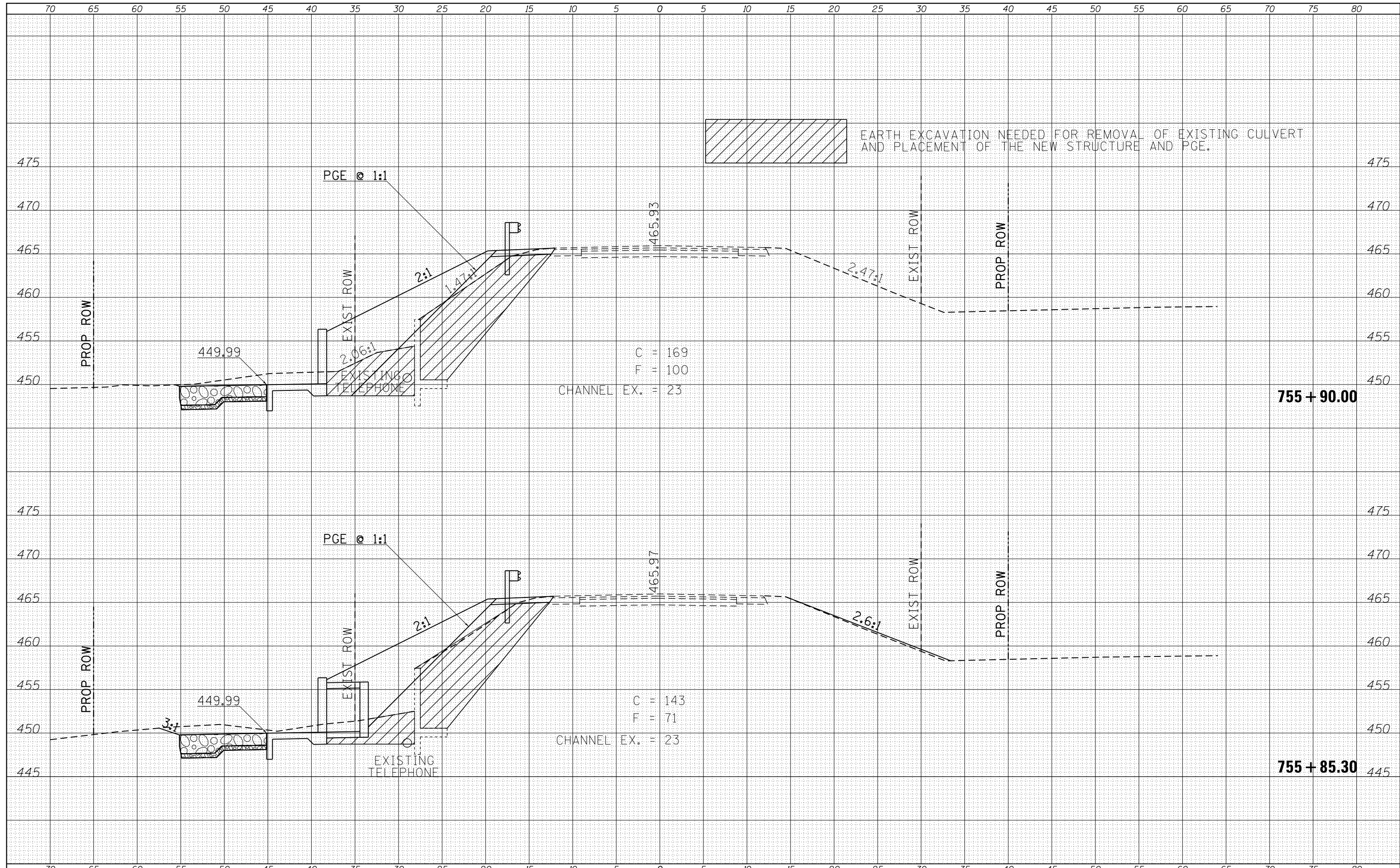
DISTRICT STANDARDS

SCALE: SHEET OF SHEETS STA. TO STA.

F.A.P. RTE.	SECTION	COUNTY	TOTAL SHEETS	SHEET NO.
778	3B-3	POPE	25	15
CONTRACT NO. 78315				
ILLINOIS FED. AID PROJECT				

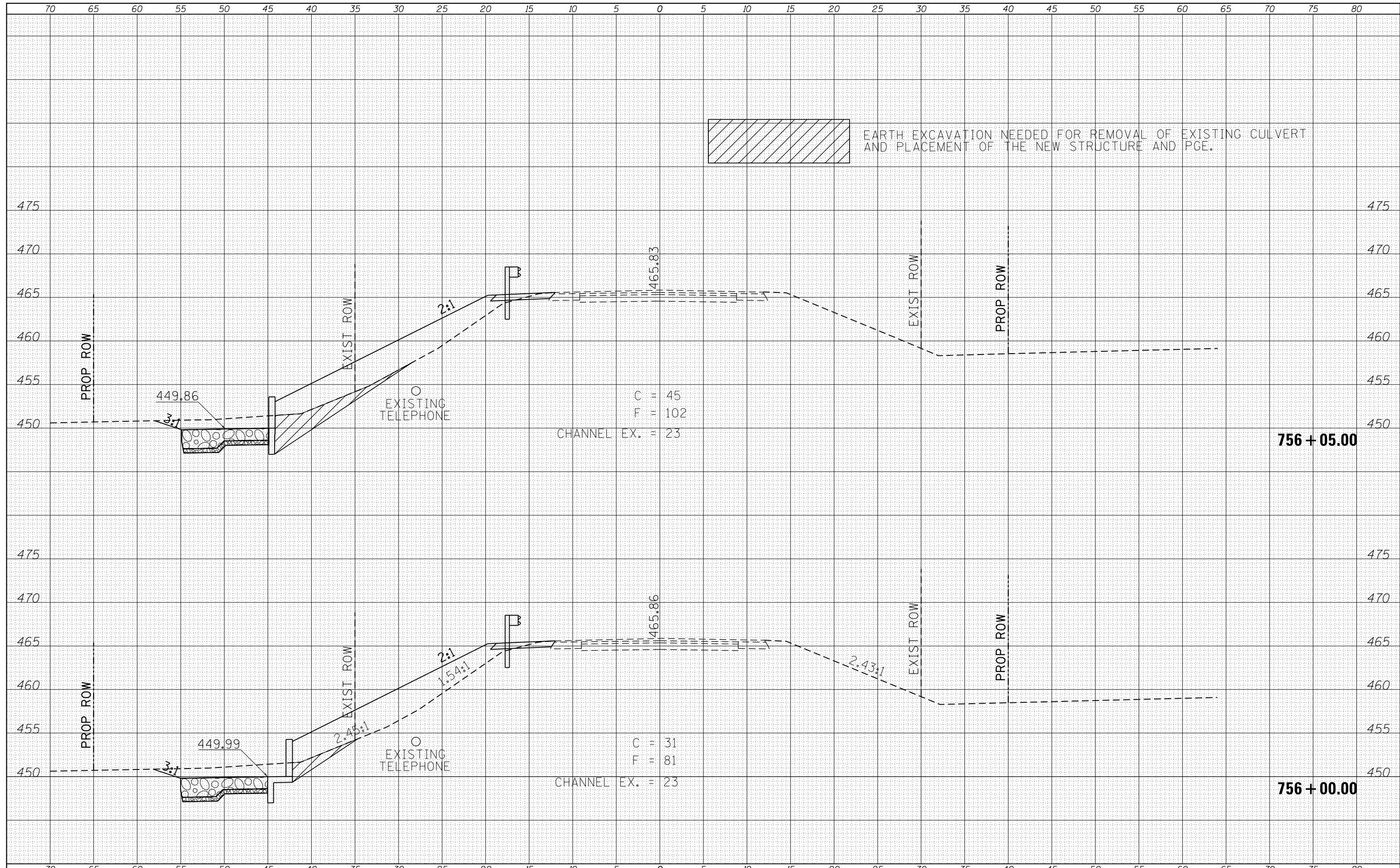
DATE	
BY	
FINAL SURVEY	SURVEYED
NOTE BOOK	PLOTTED
NO.	TEMPLATE
	AREAS CHECKED

DATE	
BY	
ORIGINAL SURVEY	SURVEYED
NOTE BOOK	PLOTTED
NO.	TEMPLATE
	AREAS CHECKED



DATE	
BY	
FINAL SURVEY	SURVEYED
NOTE BOOK	PLOTTED
NO.	TEMPLATE
	AREAS CHECKED

DATE	
BY	
ORIGINAL SURVEY	SURVEYED
NOTE BOOK	PLOTTED
NO.	TEMPLATE
	AREAS CHECKED



FILE NAME =
 c:\pw_work\pwidot\halsteadtw\d0325547\78315-sh
 Default

USER NAME = halsteadtw
 DESIGNED -
 DRAWN -
 CHECKED -
 DATE -

REVISIED -
 REVISIED -
 REVISIED -
 REVISIED -

STATE OF ILLINOIS
DEPARTMENT OF TRANSPORTATION

CROSS SECTIONS
 SCALE: SHEET OF SHEETS STA. TO STA.

F.A.P. RTE.	SECTION	COUNTY	TOTAL SHEETS	SHEET NO.
778	3B-3	POPE	25	23
CONTRACT NO. 78315				
ILLINOIS FED. AID PROJECT				

