

# CONSTRUCTION PLANS FOR PONTIAC MUNICIPAL AIRPORT PONTIAC, ILLINOIS

ILLINOIS PROJECT NO. PNT-4340  
AIP PROJECT NO. 3-17-SBGP-XX

## INSTALL VISUAL NAVIGATIONAL AID (PAPI) SYSTEM

### SUMMARY OF QUANTITIES

ITEM NO.	ITEM DESCRIPTION	UNIT	TOTAL QUANTITY
BASE BID			
AR125615	PAPI (L-880 SYSTEM)	E.A.	2
AR125910	REMOVE PLASI	E.A.	2
AR901510	SEEDING	AC.	3
AR908510	MULCHING	AC.	3

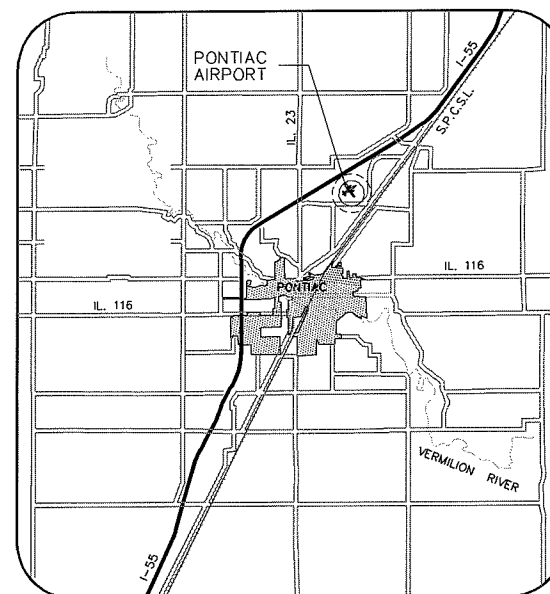
SHEET LIST TABLE	
Sheet Number	Sheet Title
01	COVER SHEET
02	SITE PLAN
03	CONSTRUCTION ACTIVITY PLAN NOTES AND DETAILS
04	CONSTRUCTION ACTIVITY PLAN
05	EXISTING CONDITIONS
06	EXISTING SCHEMATIC
07	PLASI REMOVAL DETAIL
08	EXISTING VAULT
09	NEW PAPI LAYOUT
10	PAPI DETAILS 1
11	PAPI DETAILS 2

UNICOM FREQUENCY 122.8

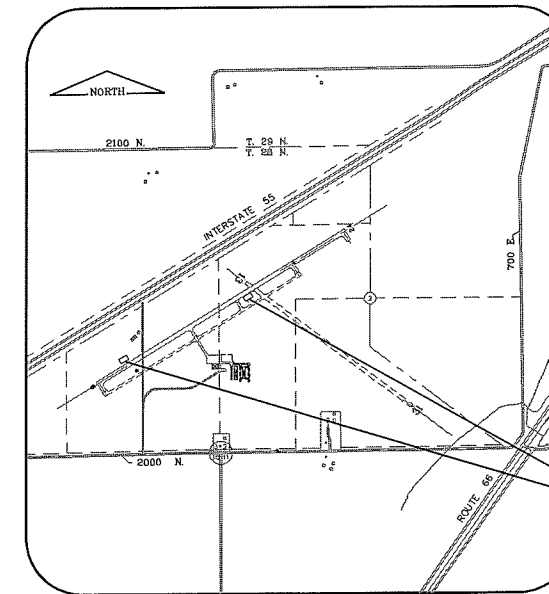
#### DESIGN DATA

GEOMETRIC DESIGN DATA
DESIGN GROUP - II
WING SPAN - 49 FEET UP TO BUT NOT INCLUDING 79 FEET.
DESIGN APPROACH CATEGORY - B
STRUCTURAL DESIGN DATA
AIRCRAFT GROSS WEIGHT - 30,000 LBS.
SINGLE WHEEL AIRCRAFT
CALL J.U.L.I.E. BEFORE EXCAVATING 1-800-892-0123 PONTIAC MUNICIPAL AIRPORT
TOWNSHIP: T28N RANGE: R5E COUNTY: LIVINGSTON TOWNSHIP: PONTIAC LOCATION: 1 MILE EAST OF RTE. 23 OVERPASS ON INTERSTATE 55 SECTION 3

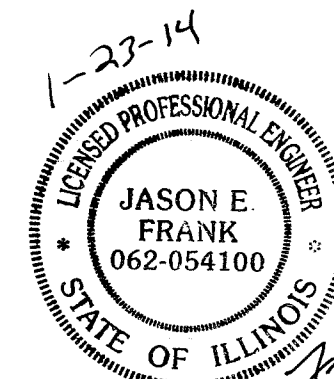
JANUARY 21, 2014



LOCATION MAP



SITE PLAN



PROPOSED IMPROVEMENTS

MAXIMUM EQUIPMENT HEIGHT  
25 FEET



SUBMITTED BY: *J. E. Frank*  
DATE: *January 23* 2014  
CM&T JOB NUMBER 13054-03

FILE: K:\Projects\13054\Drawings\Sheets\01\_Cover.dwg  
 MODIFIED: Mon 2/2/04 11:30am  
 SCALE: 1"=100'  
 LAST UPDATE: mwillson