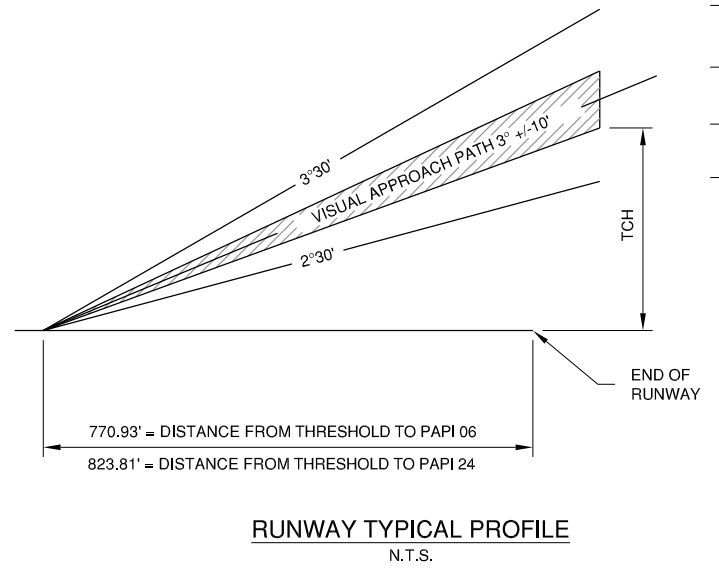
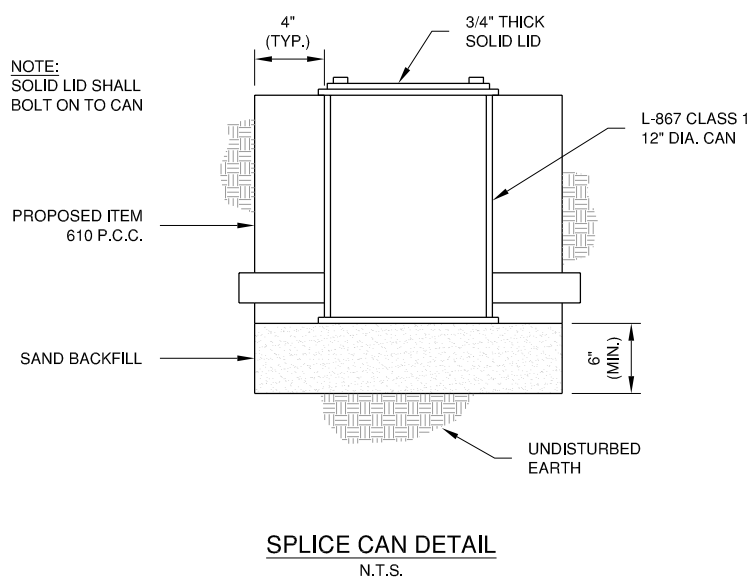
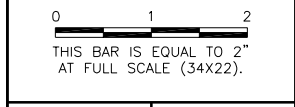
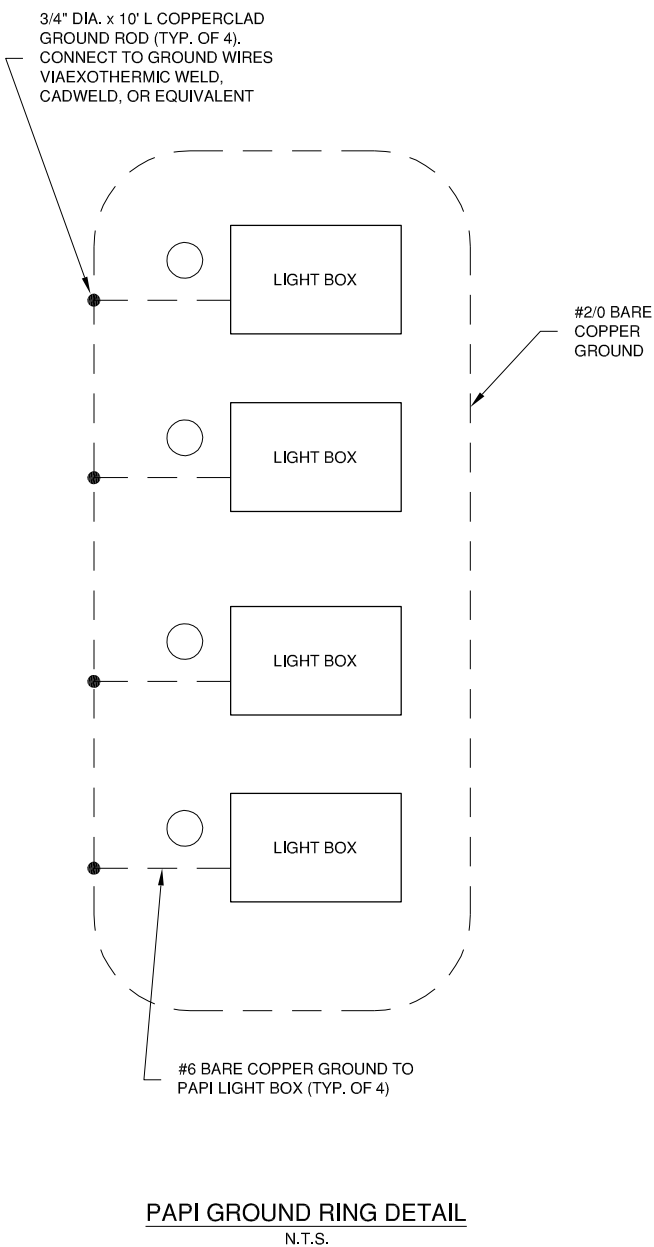
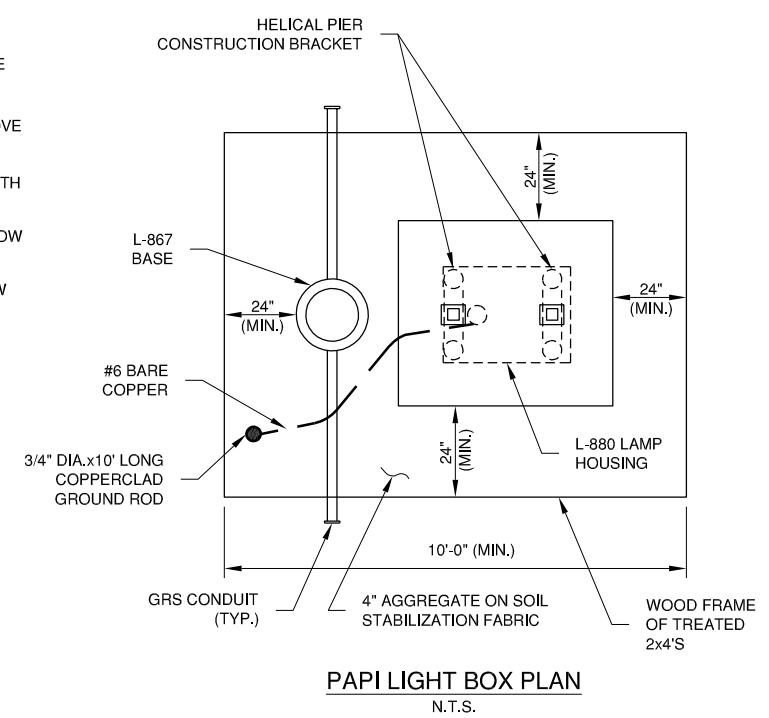


background
 baseline
 safely_areas
 surfaces
 prop_electric
 sketch_background
 11017_20
 prop_electric_1
P0017

REVISIONS		
NUMBER	BY	DATE



- SIGNAL**
- ○ ○ ○ WELL ABOVE
 - ○ ○ ⊙ SLIGHTLY ABOVE
 - ○ ⊙ ⊙ ON SIGNAL PATH
 - ⊙ ⊙ ⊙ SLIGHTLY BELOW
 - ⊙ ⊙ ⊙ ⊙ WELL BELOW



AIMING OF TYPE L-880 (4-BOX) PAPI RELATIVE TO PRESELECTED GLIDE PATH (3°00')

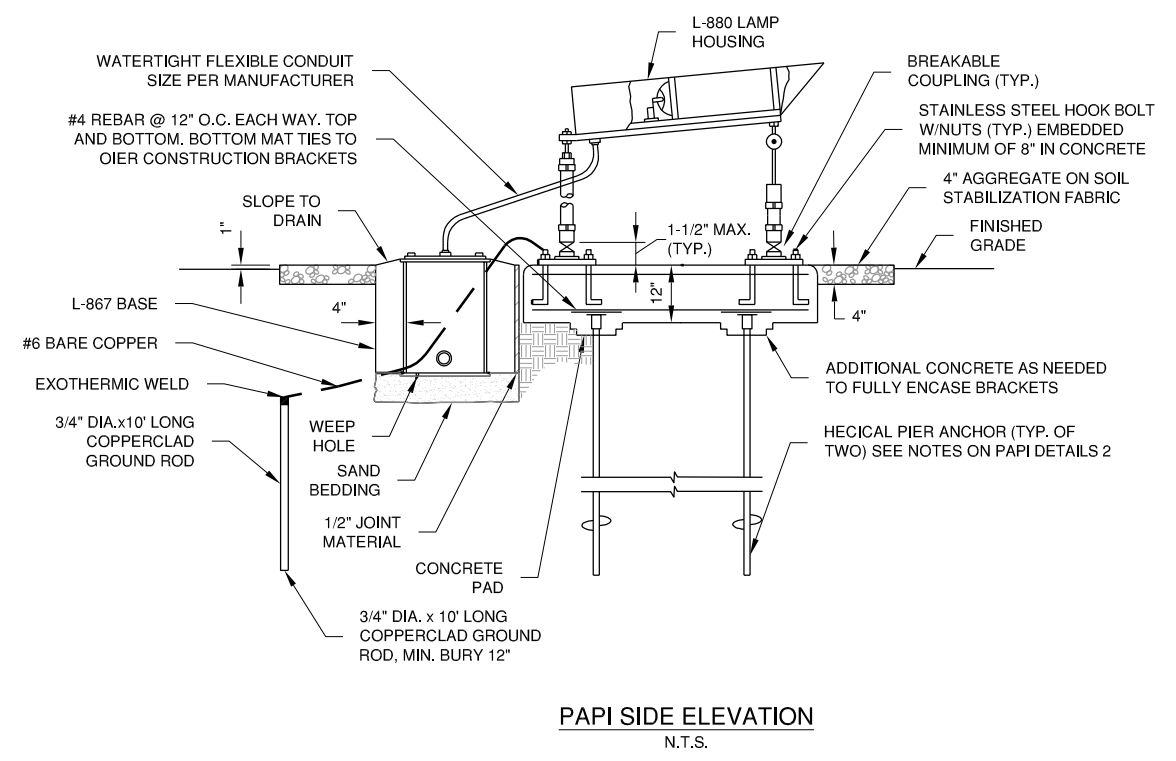
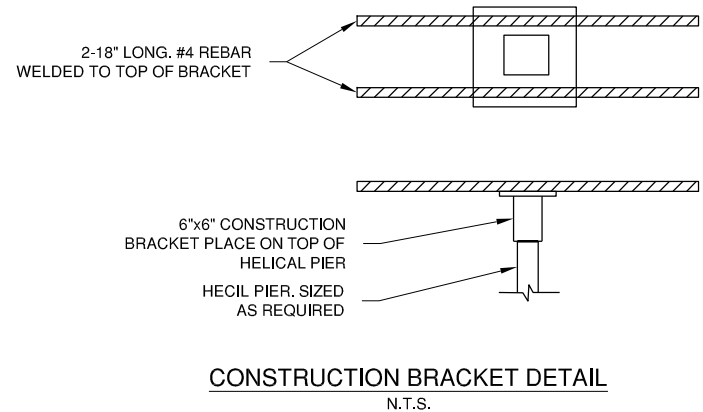
LIGHT UNIT	AIMING ANGLE (IN MINUTES OF ARC)	
	STANDARD	INSTALLATION
UNIT NEAREST RUNWAY	30'	ABOVE GLIDE PATH
NEXT ADJACENT UNIT	10'	ABOVE GLIDE PATH
NEXT ADJACENT UNIT	10'	BELOW GLIDE PATH
NEXT ADJACENT UNIT	30'	BELOW GLIDE PATH

RUNWAY	06	24
HEIGHT GROUP USED FOR SITING	1	1
THRESHOLD STATIONING	100+00	150+00
THRESHOLD ELEVATION	648.58	665.85
THRESHOLD CROSSING HEIGHT	40.0'	35.0'
STATION FOR MIDPOINT OF PROJECTORS	107+70.93	141+76.19
GLIDE PATH ANGLE *	3°	3°
ELEVATION Q _{OF} APERTURE **	650.47	660.07
ELEVATION EXIST GROUND AT PAPI ***	645.8 (+/-)	656.0 (+/-)

* THE VISUAL GLIDE PATH ANGLE IS THE CENTER OF THE ON COURSE ZONE AND THE HORIZONTAL DATUM ESTABLISHED BY THE THRESHOLD ELEVATION, AND IS MEASURED FROM THE HORIZONTAL

** ELEVATION OF CENTER OF PAPI LIGHTS

*** CONTRACTOR SHALL VERIFY ALL ELEVATIONS AT NEW PAPI LOCATION PRIOR TO CONSTRUCTION



CONCRETE PADS:
 ALL LIGHT BOXES SHALL BE FRANGIBLY MOUNTED TO THE PADS. CONCRETE PADS FOR MOUNTING LIGHT BOXES SHALL BE MADE OF ITEM 610 CONCRETE.

AZIMUTHAL AIMING:
 EACH LIGHT UNIT SHALL BE AIMED OUTWARD INTO THE APPROACH ZONE ON A LINE PARALLEL TO THE RUNWAY CENTERLINE WITHIN TOLERANCE OF +/- 1/2 DEGREE.

MOUNTING HEIGHT TOLERANCES:
 THE BEAM CENTERS OF ALL LIGHT UNITS SHALL BE WITHIN +/- 1 INCH OF A HORIZONTAL PLANE AT THE ELEVATION GIVEN IN THE TABLE.

TOLERANCE ALONG LINE PERPENDICULAR TO RUNWAY:
 THE FRONT FACE OF EACH LIGHT UNIT IN A BAR SHALL BE LOCATED ON A LINE PERPENDICULAR TO THE RUNWAY CENTERLINE WITHIN +/- 6 INCHES.

LATERAL SPACING:
 THE DIFFERENCE IN LATERAL SPACING BETWEEN LIGHT UNITS SHALL NOT EXCEED 1'-0".

PAPI INSTALLATION DETAIL
 N.T.S.

PONTIAC MUNICIPAL AIRPORT
PONTIAC, ILLINOIS
INSTALL VISUAL NAVIGATIONAL AID (PAPI) SYSTEM
PAPI DETAILS 1

© Copyright CMT, Inc.
CMT
 CRAWFORD, MURPHY & TILLY, INC.
 CONSULTING ENGINEERS
 License No. 184-000613

DESIGN BY:	JEF
DRAWN BY:	CMT
CHECKED BY:	JEF
APPROVED BY:	CET
DATE:	NOVEMBER 15, 2013
JOB No:	1305403
IL PROJ. NO.	PNT-4340
AIP PROJ. NO.	3-17-SBGP-XX
SHEET	10 OF 11 SHEETS