

STATE OF ILLINOIS
DEPARTMENT OF TRANSPORTATION

F.A.P. RTE.	SECTION	COUNTY	TOTAL SHEETS	SHEET NO.
603	(121, 122) SFY	LASALLE	6	1
		ILLINOIS	CONTRACT NO. 66F97	

INDEX OF SHEETS

- 1 COVER SHEET
- 2 GENERAL NOTES
- 3 SUMMARY OF QUANTITIES
- 4 TYPICAL SECTIONS
- 5 SCHEDULES
- 6 DETAILS

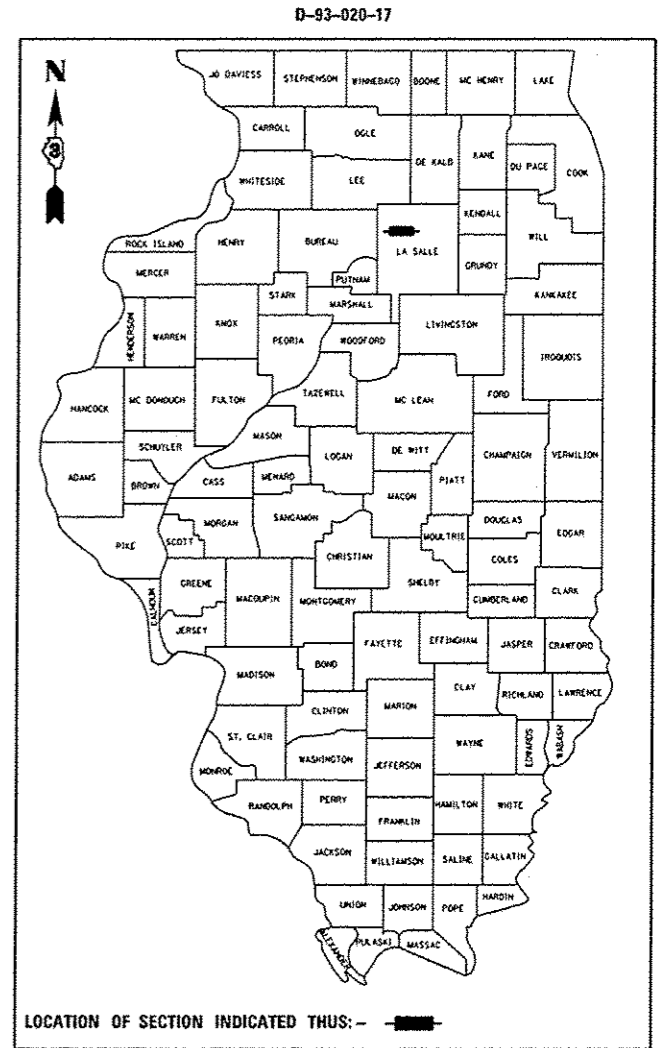
STANDARDS

- 000001-06 STANDARD SYMBOLS, ABBREVIATIONS AND PATTERNS
- 001006 DECIMAL OF AN INCH AND OF A FOOT
- 406201-01 MAILBOX TURNOUT
- 482001-02 HMA SHOULDER ADJACENT TO FLEXIBLE PAVEMENT
- 482006-03 HMA SHOULDER ADJACENT TO RIGID PAVEMENT
- 642006 SHOULDER RUMBLE STRIPS, 8 INCH
- 701006-05 OFF-ROAD OPERATIONS 2L, 2W, 15' (4.5 m) TO 24" (600 mm) FROM PAVEMENT EDGE
- 701311-03 LANE CLOSURE, 2L, 2W, MOVING OPERATIONS - DAY ONLY
- 701326-04 LANE CLOSURE, 2L, 2W, PAVEMENT WIDENING, FOR SPEEDS ≥ 45 MPH
- 701901-06 TRAFFIC CONTROL DEVICES

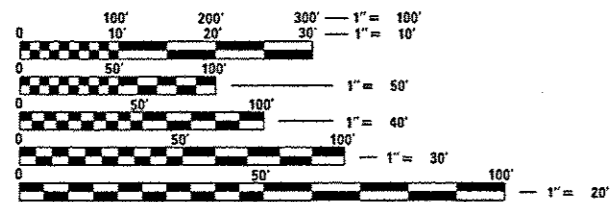
PROPOSED
HIGHWAY PLANS

FAP ROUTE 603 (US 52)
SECTION (121, 122) SFY
PROJECT ACHSIP-0603(003)
SHOULDER WIDENING AND RUMBLE STRIPS
LASALLE COUNTY

C-93-020-17

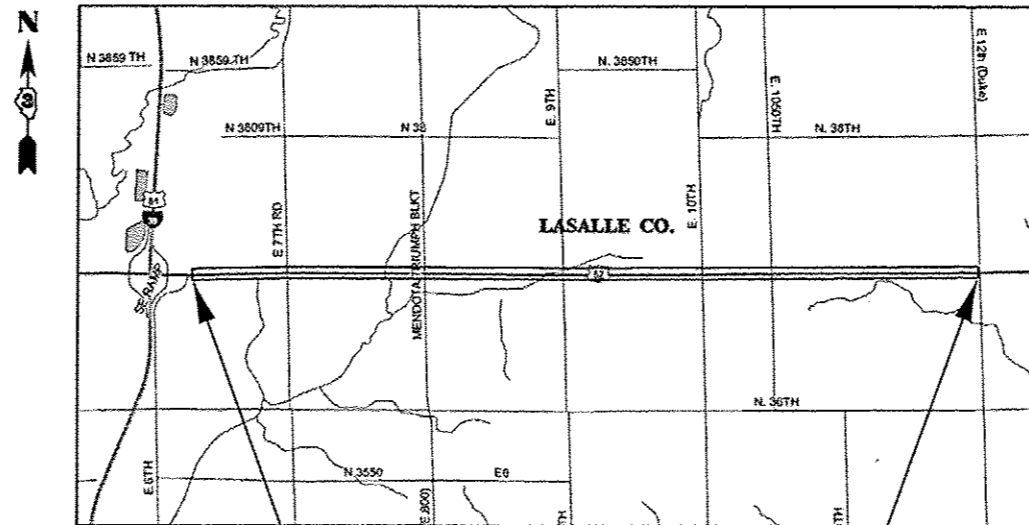


RURAL MINOR ARTERIAL
2015 ADT=2200
P.V.=64.8% S.U.=9.1% M.U.=26.1%



FULL SIZE PLANS HAVE BEEN PREPARED USING STANDARD ENGINEERING SCALES. REDUCED SIZED PLANS WILL NOT CONFORM TO STANDARD SCALES. IN MAKING MEASUREMENTS ON REDUCED PLANS, THE ABOVE SCALES MAY BE USED.

J.U.L.I.E.
JOINT UTILITY LOCATION INFORMATION FOR EXCAVATION
1-800-892-0123
OR 811



PROJECT BEGINS
PCC / HMA JOINT APPROX.
400' EAST OF E 6TH RD
LOG MILE 0.00

PROJECT ENDS
E 12TH RD
LOG MILE 5.66

GROSS AND NET LENGTH = 29,885 FT. = 5.66 MILES

PROJECT ENGINEER: JOE KANNEL, P.E.
UNIT CHIEF: MARC BUDZYNSKI
DISTRICT 3 NO. (815) 434-6131
CONTRACT NO. 66F97

STATE OF ILLINOIS
DEPARTMENT OF TRANSPORTATION

SUBMITTED *December 9, 2016*
Kerwin Marchel, P.E.
REGIONAL ENGINEER

Jan 27, 2017
Mariam M. Addis, P.E.
ENGINEER OF DESIGN AND ENVIRONMENT

Jan 27, 2017
Amelia [Signature]
DIRECTOR OF PROGRAM DEVELOPMENT

PRINTED BY THE AUTHORITY
OF THE STATE OF ILLINOIS

GENERAL NOTES

THE THICKNESS OF HMA SHOWN ON THE PLANS IS THE NOMINAL THICKNESS. DEVIATIONS FROM THE NOMINAL THICKNESS WILL BE PERMITTED WHEN SUCH DEVIATIONS OCCUR DUE TO IRREGULARITIES IN THE EXISTING SURFACE OR BASE ON WHICH THE HMA IS PLACED.

THE HMA SURFACE OF ALL MAILBOX TURNOUTS, PRIVATE ENTRANCES, COMMERCIAL ENTRANCES, AND SIDE ROADS SHALL BE MADE NEATLY, IN A WORKMANLIKE MANNER, AND SHALL ACCURATELY CONFORM TO THE SHAPES AND DIMENSIONS SHOWN ON THE PLAN DETAILS. IF REQUIRED BY THE ENGINEER, THE CONTRACTOR SHALL SAW CUT THE HMA SURFACE TO CONFORM TO THE SHAPES AND DIMENSIONS SHOWN ON THE PLAN DETAILS. THIS WORK WILL BE INCLUDED IN THE COST OF THE HMA SURFACE.

THE ENGINEER WILL BE THE SOLE JUDGE CONCERNING CURING TIME FOR THE VARIOUS HMA LIFTS.

FOR STABILIZATION, ALL TYPE III BARRICADES WILL REQUIRE A MINIMUM OF FOUR SAND BAGS PER BARRICADE.

SEEDING WILL NOT BE PERMITTED AT ANY TIME WHEN THE GROUND IS FROZEN, WET, OR IN AN UNTILLABLE CONDITION. LOCATIONS TO BE SEEDED WILL BE DETERMINED BY THE ENGINEER.

ALL EXCAVATED MATERIAL, WHICH INCLUDES DIGGING OR GRADING OF ANY SOIL OR FILL MATERIAL, WITH THE EXCEPTION OF AGGREGATE FILLS, MUST BE INCORPORATED WITHIN THE IDOT RIGHT OF WAY DUE TO ENVIRONMENTAL DOCUMENTATION REQUIREMENTS.

ANY REFERENCE TO A STANDARD IN THESE PLANS SHALL BE INTERPRETED TO MEAN THE EDITION AS INDICATED BY THE SUBNUMBER SHOWN IN THE LIST OF STANDARDS OR THE COPY INCLUDED IN THESE PLANS.

THE FOLLOWING RATES OF APPLICATION HAVE BEEN USED IN CALCULATING PLAN QUANTITIES:

HMA RESURFACING	112	LBS / SQ YD / IN
-----------------	-----	------------------

ALL DAMAGE TO DEPARTMENT OWNED UNDERGROUND FACILITIES, CAUSED BY THE CONTRACTOR SHALL BE REPAIRED TO THE SATISFACTION OF THE DEPARTMENT AT THE CONTRACTOR'S EXPENSE. THIS SHALL INCLUDE ALL TEMPORARY REPAIRS REQUIRED TO KEEP THE FACILITY OPERATIONAL WHILE MATERIAL IS BEING OBTAINED TO MAKE PERMANENT REPAIRS. SPLICING OF ELECTRIC CABLE WILL NOT BE ALLOWED. ELECTRIC CABLE SHALL BE REPLACED FROM POLE TO POLE OR CONTROLLER.

THE CONTRACTOR SHALL CONTACT JULIE AT LEAST 48 HOURS PRIOR TO EXCAVATION TO DETERMINE WHICH UTILITIES ARE IN THE AREA.

LOCATION(S):	ENTIRE PROJECT	ENTIRE PROJECT	ENTIRE PROJECT
MIXTURE USE(S):	SHOULDER BOTTOM LIFT(S)	SHOULDER TOP LIFT (2'')	MAILBOX TURNOUTS
BINDER GRADE (PG):	PG 64-22	PG 64-22	PG 64-22
DESIGN AIR VOIDS:	4.0% @ N50	4.0% @ N50	4.0% @ N50
MIXTURE COMPOSITION: (MIXTURE GRADATION)	IL-19.0	IL-9.5 FG	IL-9.5 FG
FRICTION AGGREGATE:	-	MIXTURE C	MIXTURE C
MIXTURE WEIGHT:	112.0 LB/SY/IN	112.0 LB/SY/IN	112.0 LB/SY/IN
QUALITY MANAGEMENT PROGRAM:	QC/QA	QC/QA	QC/QA
SUBLOT SIZE:	N/A	N/A	N/A
DENSITY TEST METHOD:	CORES	% GROWTH CURVE	SATISFACTION OF THE ENGINEER

COMMITMENTS:

STATE OF ILLINOIS
DEPARTMENT OF TRANSPORTATION
DISTRICT THREE
AS BUILT INFORMATION

SUPERVISING CONSTRUCTION FIELD ENGINEER

RESIDENT ENGINEER / TECHNICIAN

START & END DATES
OF CONSTRUCTION: _____

INSPECTORS: _____

STATE OF ILLINOIS
DEPARTMENT OF TRANSPORTATION
DISTRICT THREE

PREPARED BY: *David Bevil*
DISTRICT STUDIES & PLANS ENGINEER

DATE: December 9, 2016

EXAMINED BY: *Harold J...*
DISTRICT CONSTRUCTION ENGINEER

Walter...
DISTRICT MATERIALS ENGINEER

Tom...
DISTRICT OPERATIONS ENGINEER

FILE NAME *	USER NAME * budzyshim	DESIGNED -	REVISED -	STATE OF ILLINOIS DEPARTMENT OF TRANSPORTATION	GENERAL NOTES	F.A.P. RTE.	SECTION	COUNTY	TOTAL SHEETS	SHEET NO.	
pw\1\1084EBID\INTEG.illinois.gov\1001\00	Documents\DOT Offices\District 3\Projects\036	FOR DRAWING DATA\EA0\sheet\036F97-shr-cover	REVISED -			603	(121, 122) SFY	LASALLE	6	2	
Default	PLOT SCALE = 100.0000' / 1"	CHECKED -	REVISED -			SCALE: SHEET OF SHEETS STA. TO STA.		ILLINOIS FED. AID PROJECT			
	PLOT DATE = 12/9/2016	DATE -	REVISED -			CONTRACT NO. 66F97					

90% FEDERAL
10% STATE

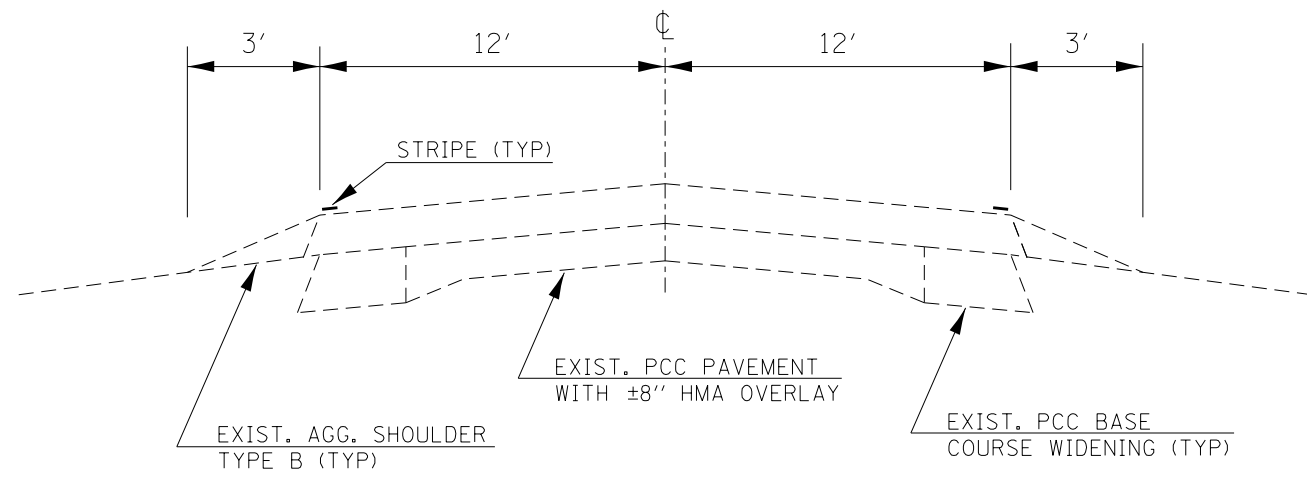
CONSTR. CODE

CODE NO.	ITEM	UNIT	TOTAL QUANTITY	CONSTR. CODE	
				ROADWAY 0021	RURAL
20200600	EXCAVATING AND GRADING EXISTING SHOULDER	UNIT	598	598	
40600290	BITUMINOUS MATERIALS (TACK COAT)	POUND	11978	11978	
40800050	INCIDENTAL HOT-MIX ASPHALT SURFACING	TON	5.2	5.2	
44000157	HOT-MIX ASPHALT SURFACE REMOVAL, 2"	SQ YD	44.1	44.1	
48203029	HOT-MIX ASPHALT SHOULDERS, 8"	SQ YD	26564	26564	
64200108	SHOULDER RUMBLE STRIPS, 8 INCH	FOOT	59770	59770	
67100100	MOBILIZATION	LSUM	1.0	1.0	
70100500	TRAFFIC CONTROL AND PROTECTION, STANDARD 701326	LSUM	1.0	1.0	
70103815	TRAFFIC CONTROL SURVEILLANCE	CAL DA	5	5	
* 78001110	PAINT PAVEMENT MARKING - LINE 4"	FOOT	119540	119540	
X0800001	SHOULDER REMOVAL (SPECIAL)	SQ YD	26564	26564	
20030850	TEMPORARY INFORMATION SIGNING	SQ FT	42	42	

12

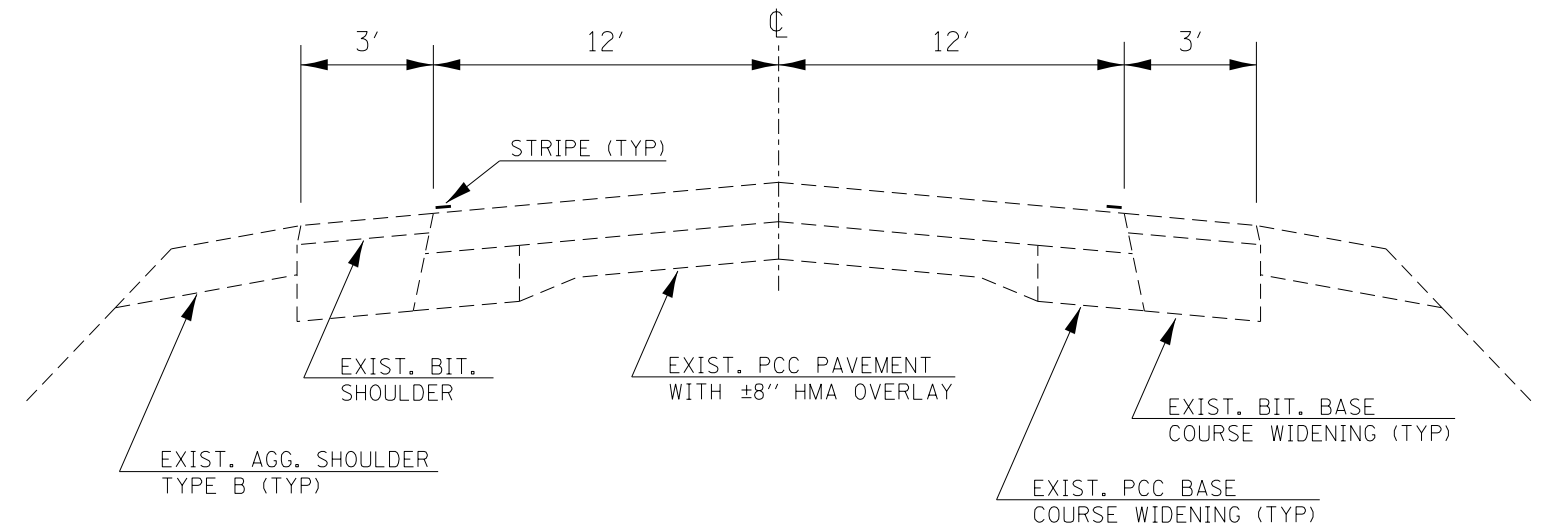
* SPECIALTY ITEM

FILE NAME *	USER NAME * budgynshn	DESIGNED -	REVISED -	STATE OF ILLINOIS DEPARTMENT OF TRANSPORTATION				SUMMARY OF QUANTITIES				F.A.P. RTE.	SECTION	COUNTY	TOTAL SHEETS	SHEET NO.
pw:\IL084EBIDINTEG\illinois.gov\PWIDOT\Documents\1007 Offices\District 3\Projects\0366 FORADMD\Drawings\0366F97-shf-cover	DESIGNED -	REVISED -	REVISED -									603	(12), (22) SFY	LASALLE	6	3
PLOT SCALE * 100.0000 ' / in.	CHECKED -	REVISED -	REVISED -	SCALE:				SHEET	OF	SHEETS	STA.	TO	STA.	ILLINOIS FED. AID PROJECT		
PLOT DATE * 12/9/2016	DATE -	REVISED -	REVISED -	CONTRACT NO. 66F97												



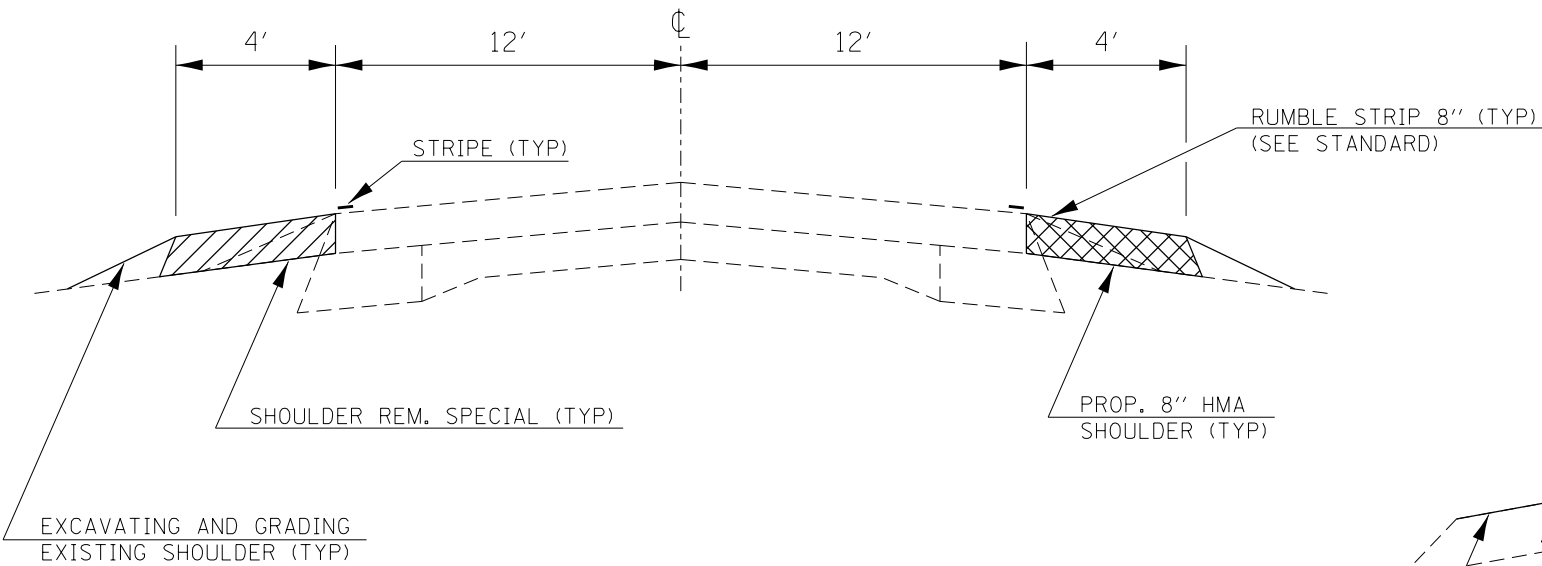
EXISTING TYPICAL SECTION 1

LM 0.00 TO LM 1.34
 LM 1.39 TO LM 2.48
 LM 2.53 TO LM 5.66



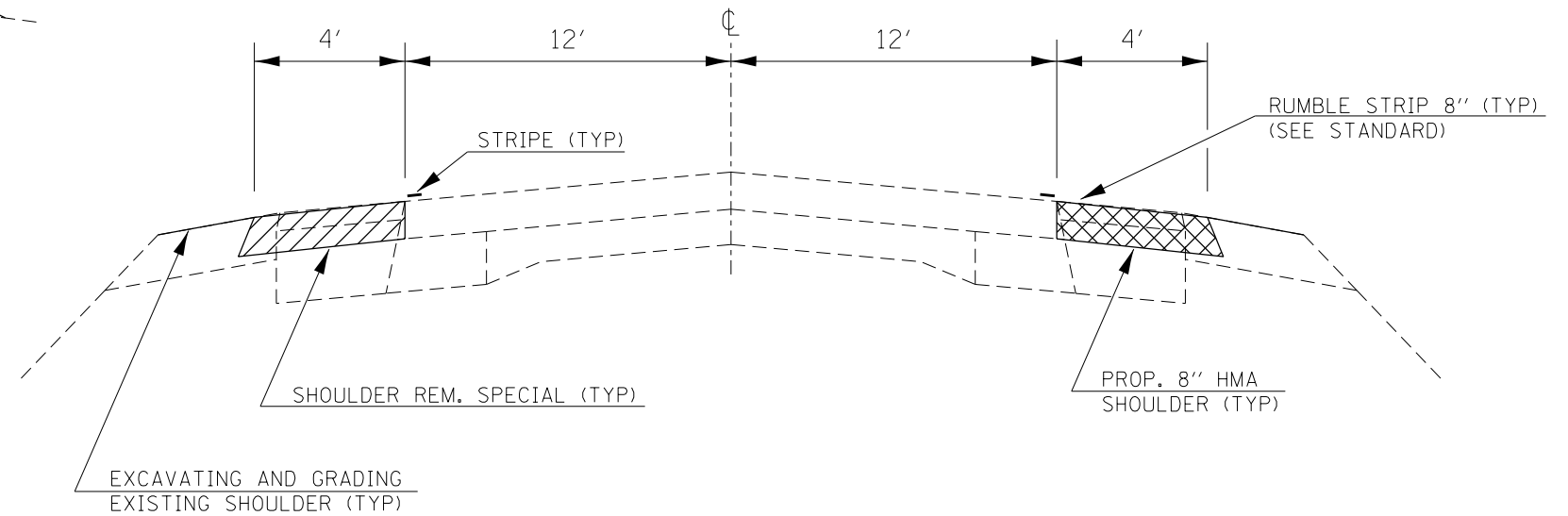
EXISTING TYPICAL SECTION 2

LM 1.34 TO LM 1.39
 LM 2.48 TO LM 2.53



PROPOSED TYPICAL SECTION 1

LM 0.00 TO LM 1.34
 LM 1.39 TO LM 2.48
 LM 2.53 TO LM 5.66



PROPOSED TYPICAL SECTION 2

LM 1.34 TO LM 1.39
 LM 2.48 TO LM 2.53

FILE NAME =	USER NAME = budzynskim	DESIGNED -	REVISED -
p:\11084EBID\INTEG.illinois.gov\PI\DOT\Documents\DOT Offices\District 3\Projects\0366\DRAWING\DATA\CAD\Sheets\0366F97-sht-cover.dwg		REVISION	REVISION
Default	PLOT SCALE = 100.0000' / 1in.	CHECKED -	REVISED -
	PLOT DATE = 12/9/2016	DATE -	REVISED -

**STATE OF ILLINOIS
 DEPARTMENT OF TRANSPORTATION**

TYPICAL SECTIONS

SCALE: SHEET OF SHEETS STA. TO STA.

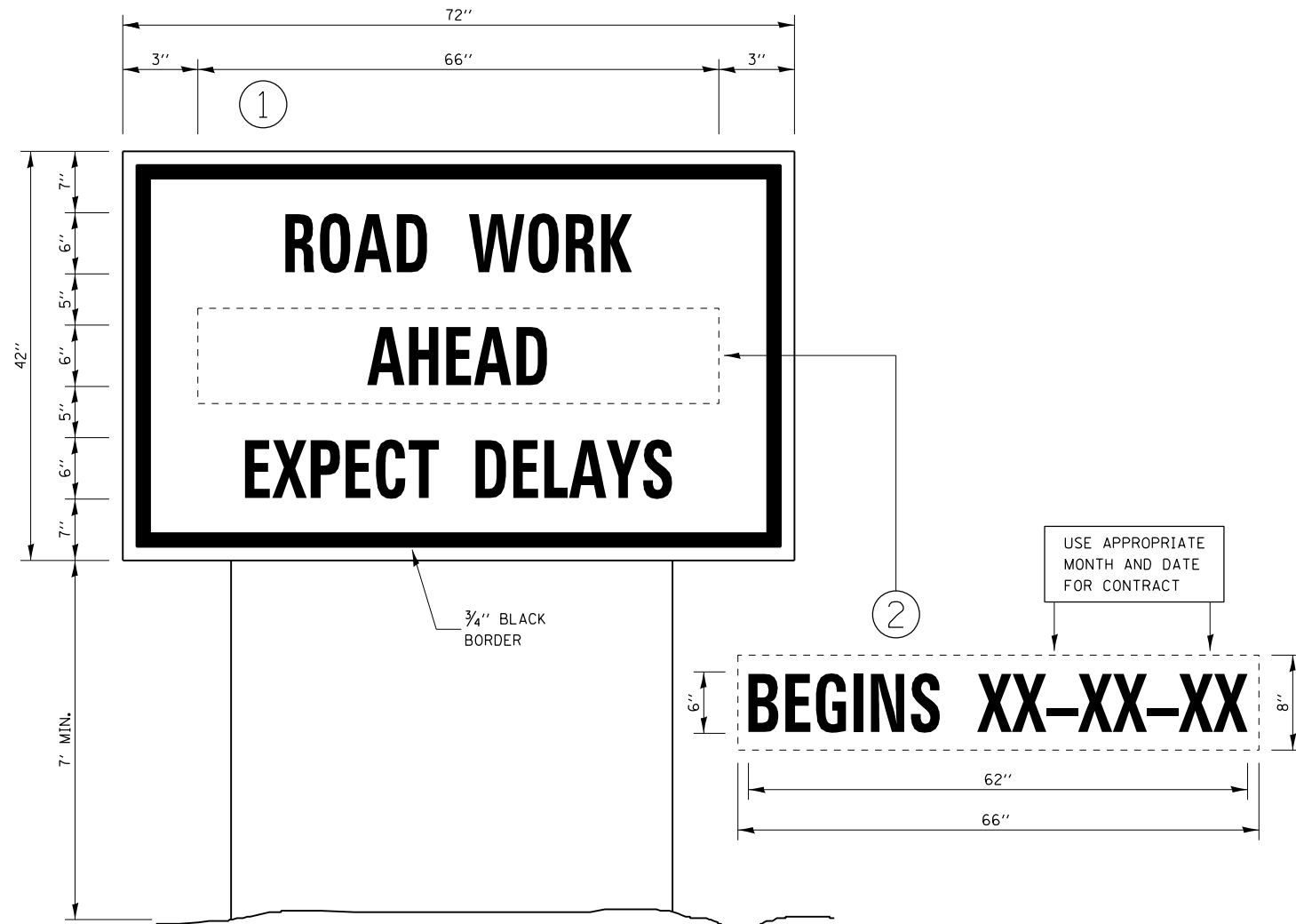
F.A.P. RTE.	SECTION	COUNTY	TOTAL SHEETS	SHEET NO.
603	(121, 122) SFY	LASALLE	6	4
CONTRACT NO. 66F97				
ILLINOIS FED. AID PROJECT				

SHOULDER REMOVAL & REPLACEMENT SCHEDULE								
LOCATION			LENGTH	SHOULDER REMOVAL (SPECIAL)	HMA SHOULDERS 8"	BIT MTLs (TACK COAT)	SHOULDER RUMBLE STRIPS 8"	•PAINT PVMT MARKING WHITE 4"
L.M.	TO	L.M.	FOOT	SQ YD	SQ YD	POUND	FOOT	FOOT
0.00	TO	5.66	29885	26564	26564	11954	59770	119540
TOTAL			29885	26564	26564	11954	59770	119540

•QUANTITY REPRESENTS TWO SEPARATE APPLICATIONS

MAILBOX TURNOUT REMOVAL & REPLACEMENT SCHEDULE					
L.M. / SIDE		AREA	HMA SURF REMOVAL 2"	INCIDENTAL HMA SURF 2"	BIT MTLs (TACK COAT)
		SQ YD	SQ YD	TON	POUND
0.29	RT	16.8	5.4	0.7	3
0.45	RT	25.5	4.7	0.6	3
1.10	RT	28.8	5.3	0.6	3
1.86	RT	23.6	3.5	0.4	2
3.12	RT	17.3	1.5	0.2	1
5.50	LT	30.7	7.0	0.8	4
5.61	LT	38.9	16.7	1.9	8
TOTAL		181.6	44.1	5.2	24

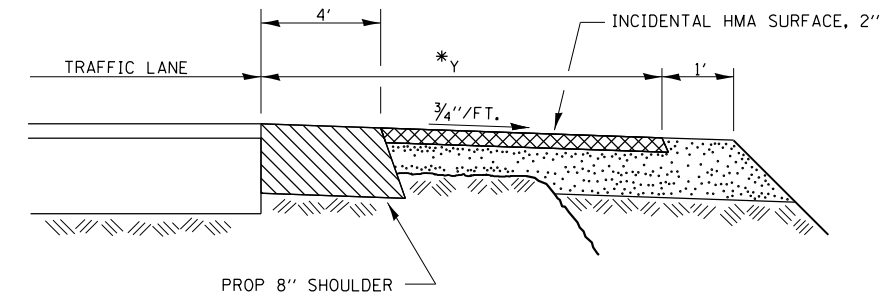
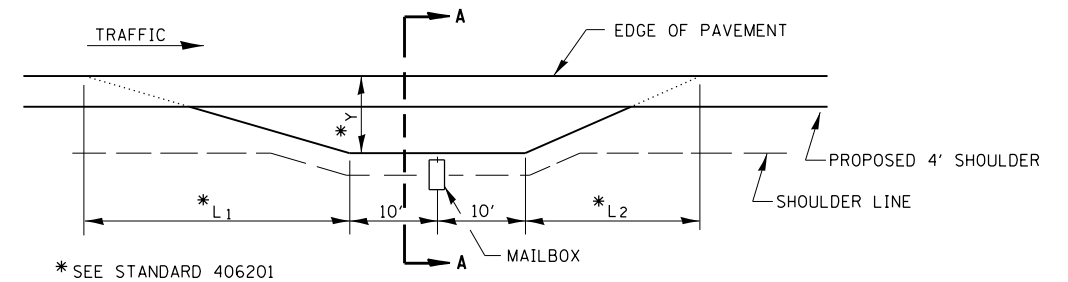
THE FIRST 4 FEET OF THE MBTO ADJACENT TO THE TRAVELED WAY IS PAID AS SHOULDER REMOVAL (SPECIAL) AND HMA SHOULDERS 8" THE REMAINING AREA OF THE MBTO IS PAID AS HMA SURFACE REMOVAL 2" AND INCIDENTAL HMA SURFACE 2"



TEMPORARY INFORMATION SIGNING

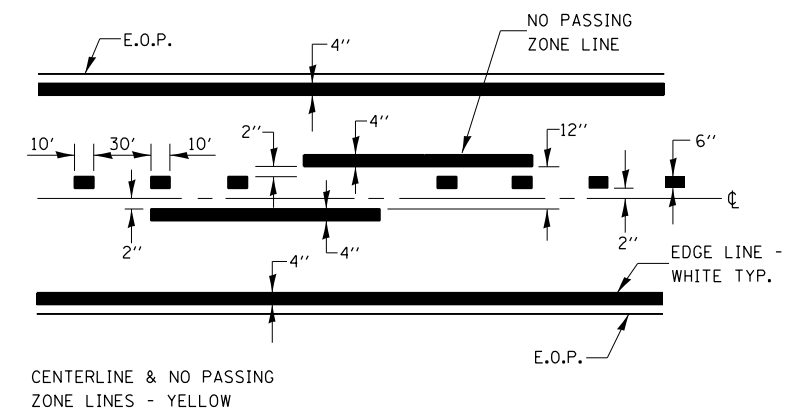
NOTES:

1. USE 6" D BLACK LETTERING ON FLOURESENT ORANGE BACKGROUND.
2. ERECT SIGNS AT LOCATIONS IN ADVANCE OF THE "ROAD CONSTRUCTION AHEAD" SIGNS AS DIRECTED BY THE ENGINEER.
3. ERECT SIGN ① WITH INSTALLED PANEL ② A MINIMUM OF ONE WEEK PRIOR TO THE START OF THE LANE CLOSURE.
4. REMOVE PANEL ② ON THAT DATE.
5. SEE SPECIAL PROVISION "TEMPORARY INFORMATION SIGNING" FOR ADDITIONAL INFORMATION.
6. WILL BE PAID FOR PER SQ FT AS "TEMPORARY INFORMATION SIGNING". EACH SIGN = 21 SQ FT AND THE DATE PANEL ② WILL NOT BE MEASURED SEPARATELY FOR PAYMENT.



SECTION A-A

RURAL MAILBOX TURNOUT DETAILS (NTS)



PAVEMENT MARKING

FILE NAME =	USER NAME = budzynskim	DESIGNED -	REVISED -	STATE OF ILLINOIS DEPARTMENT OF TRANSPORTATION	DETAILS			F.A.P. RTE.	SECTION	COUNTY	TOTAL SHEETS	SHEET NO.
pw:\IL\084EBIDINTEG.illinois.gov\PIDOT\Documents\DOT Offices\District 3\Projects\D366\DRAWING\DATA\CAD\Sheets\D366F97-sht-cover.dwg	PLotted SCALE = 100.0000' / in.	CHECKED -	REVISED -					603	(121, 122) SFY	LASALLE	6	6
Default	PLotted DATE = 12/9/2016	DATE -	REVISED -					CONTRACT NO. 66F97				
				SCALE:	SHEET	OF	SHEETS	STA.	TO	STA.	ILLINOIS FED. AID PROJECT	