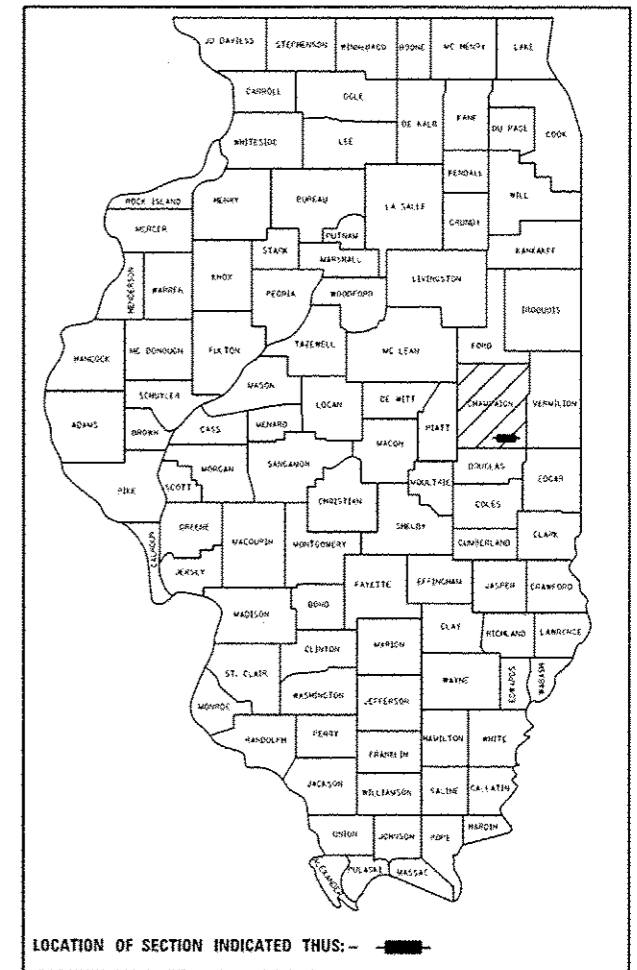


STATE OF ILLINOIS
DEPARTMENT OF TRANSPORTATION

F.A.S. RTE.	SECTION	COUNTY	TOTAL SHEETS	SHEET NO.
526	(58)BRR	CHAMPAIGN	19	1
		ILLINOIS	CONTRACT NO. 70C32	

D-95-059-16



PROPOSED HIGHWAY PLANS

FAS ROUTE 526 (BONGARD RD) CH 16
SECTION (58)BRR

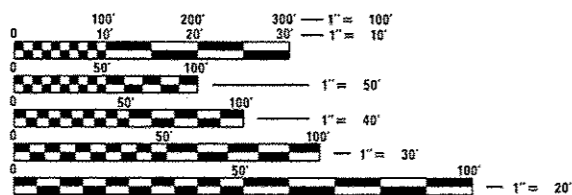
BRIDGE REPAIR CH 16 OVER
EAST BRANCH EMBARRAS RIVER
2 MILE EAST OF BONGARD
CHAMPAIGN COUNTY

C-95-059-16

FOR INDEX OF SHEETS, SEE SHEET NO. 2
FOR SUMMARY OF QUANTITIES, SEE SHEET NO. 3

CURRENT TRAFFIC DATA STR. 010-0240	
2016 ADT	= 400
2026 ADT	= 400
PU+PC %	= 92.8
SU %	= 3.6
MU%	= 3.6

DESIGN DESIGNATION
MINOR COLLECTOR



FULL SIZE PLANS HAVE BEEN PREPARED USING STANDARD ENGINEERING SCALES. REDUCED SIZED PLANS WILL NOT CONFORM TO STANDARD SCALES. IN MAKING MEASUREMENTS ON REDUCED PLANS, THE ABOVE SCALES MAY BE USED.

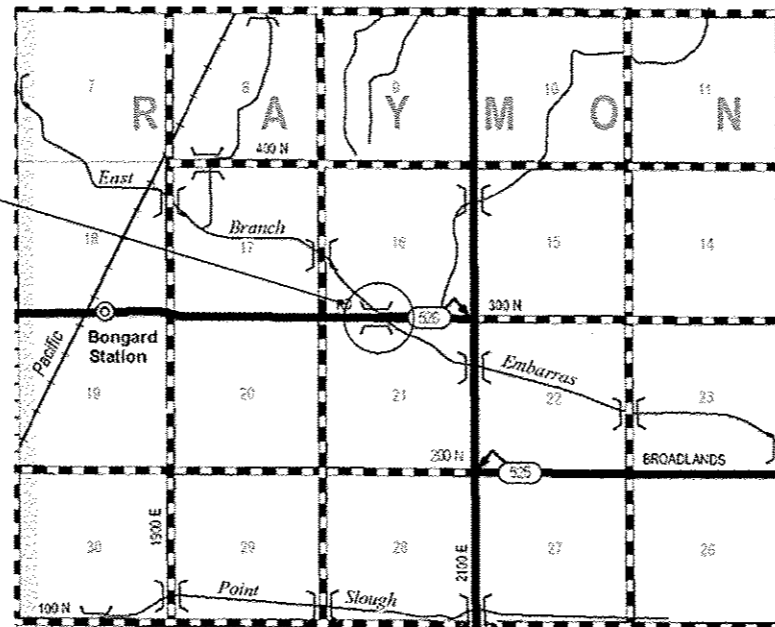
J.U.L.I.E.
JOINT UTILITY LOCATION INFORMATION FOR EXCAVATION
1-800-892-0123
OR 811

TOWNSHIP: RAYMOND

PROJECT ENGINEER: TIM BRANDENBURG
PROJECT DESIGNER: ERIC SHAWLER

CONTRACT NO. 70C32

EXISTING S.N. 010-0240
F.A.S. 526 BONGARD RD. CH. 16
EAST BRANCH EMBARRAS RIVER
STATION 97+79.00
BRIDGE REPAIR



GROSS LENGTH = 114.00 FT. = 0.0216 MILE
NET LENGTH = 114.00 FT. = 0.0216 MILE



STATE OF ILLINOIS
DEPARTMENT OF TRANSPORTATION

SUBMITTED November 9, 2016
Tom A. Tamm
REGION THREE ENGINEER

Jan 27, 2017
Maureen M. Addis, P.E.
ENGINEER OF DESIGN AND ENVIRONMENT

Jan 27, 2017
Maureen M. Addis
DIRECTOR OF PROGRAM DEVELOPMENT

PRINTED BY THE AUTHORITY
OF THE STATE OF ILLINOIS

INDEX OF SHEETS

SHEET NO.	ITEM
1	COVER SHEET
2	INDEX OF SHEETS
2	LIST OF STANDARDS
2	GENERAL NOTES
3	SUMMARY OF QUANTITIES
4-17	STRUCTURE PLANS S.N. 010-0240
18-19	WIDTH RESTRICTION SIGNS

GENERAL NOTES

G.N.-100

ENGLISH UNITS OF MEASUREMENT SHALL GOVERN OVER AND SUPERSEDE ANY METRIC UNITS SHOWN IN THIS CONTRACT. WHERE INCLUDED, METRIC UNITS ARE FOR INFORMATION ONLY.

G.N.-105.09A

ALL ELEVATIONS SHOWN IN THE PLANS ARE BASED ON NORTH AMERICAN VERTICAL DATUM OF 1988. (NAVD 88)

THERE ARE NO COMMITMENTS ASSOCIATED WITH THIS PROJECT.

LIST OF HIGHWAY STANDARDS

STANDARD NO.	DESCRIPTION
000001-06	STANDARD SYMBOLS, ABBREVIATIONS AND PATTERNS
001006	DECIMAL OF AN INCH AND FOOT
701006-05	OFF-ROAD OPERATIONS, 2L, 2W, 15' TO 24" FROM PAVEMENT EDGE
701201-04	LANE CLOSURE, 2L, 2W, DAY ONLY, FOR SPEEDS > 45 MPH
701316-11	LANE CLOSURE, 2L, 2W, BRIDGE REPAIR, FOR SPEEDS > 45 MPH
701901-06	TRAFFIC CONTROL DEVICES

STRUCTURE 010-0240 WAS BUILT IN 1982 AS FAS 526 (BONGARD ROAD), SECTION 58BR, CONTRACT 35237 AT STATION 97+79.00 BY THE STATE OF ILLINOIS IN CHAMPAIGN COUNTY. THE STRUCTURE IS A THREE SPAN 8" REINFORCED CONCRETE SLAB, ON CONTINUOUS ROLLED WEATHERING STEEL BEAM (W21") RESTING ON PRECAST CONCRETE PILE SUPPORTED SOLID WALL PIERS AND CONCRETE PILE SUPPORTED STUB ABUTMENTS. THE EXISTING STRUCTURE HAS A BACK TO BACK OF ABUTMENT LENGTH OF 114'-0", AN OUT TO OUT WIDTH OF 33'-2" AND A ROADWAY WIDTH OF 30'-0". THE STRUCTURE IS SKEWED 49° RIGHT FORWARD. IN 2010, OPERATIONS BRIDGE CREW FORCES REMOVED THE EXISTING NEOPRENE EXPANSION ABUTMENT JOINTS AND INSTALLED POLYMER NOSING WITH SILICONE JOINTS.

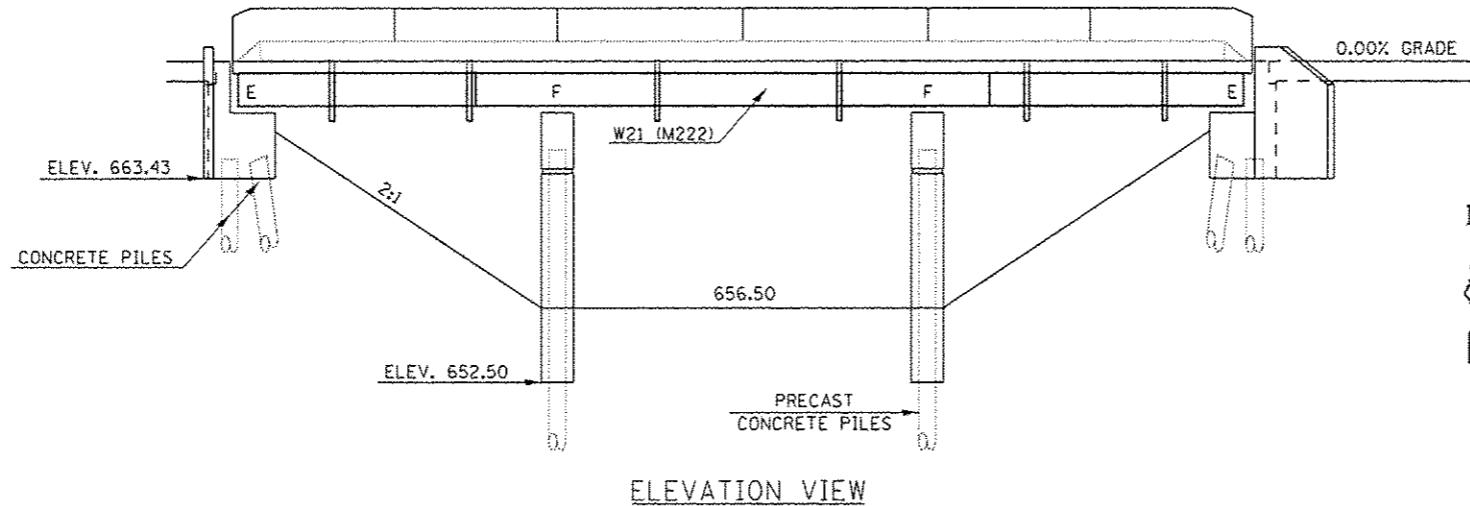
Method of Construction is Stage Construction

SCOPE OF WORK

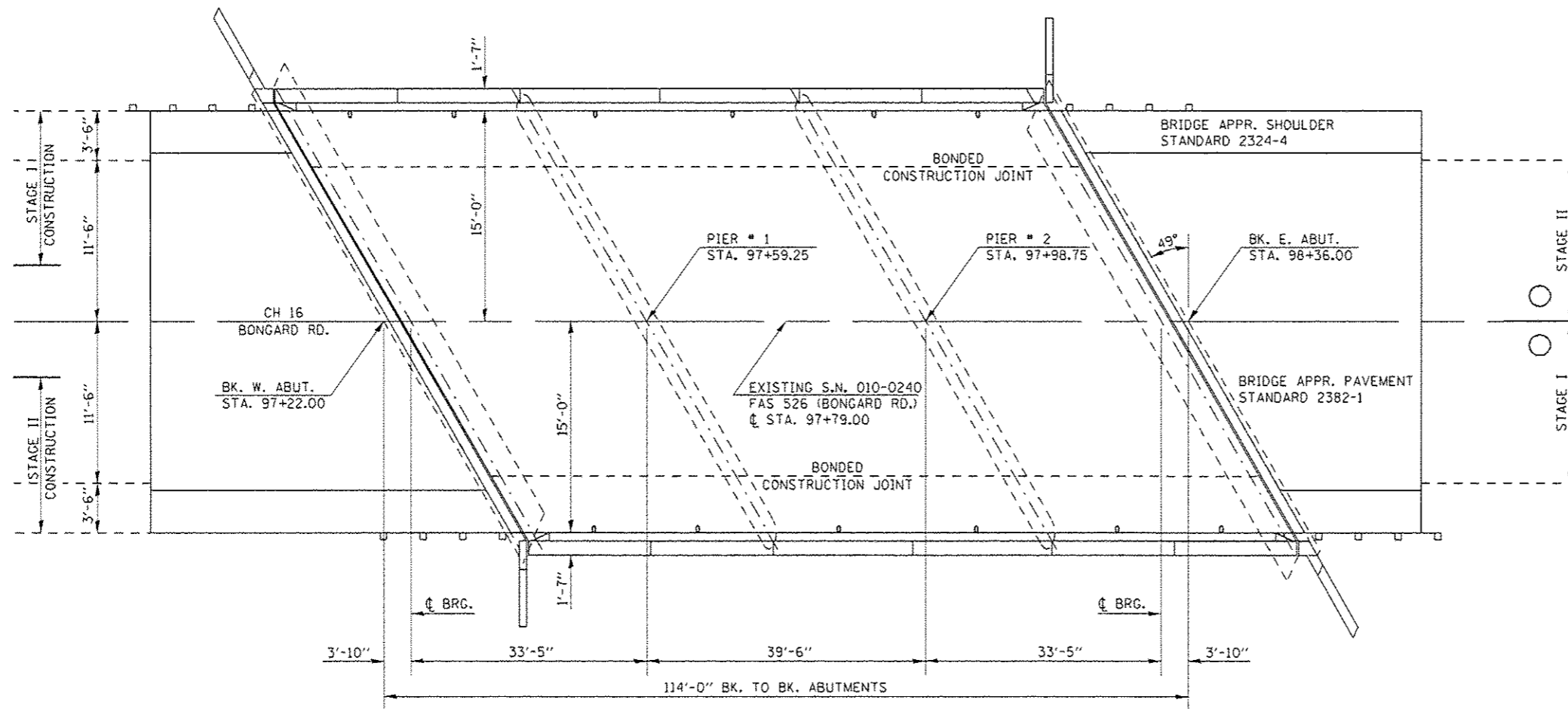
1. REPAIR BEAM ENDS.
2. REMOVE AND REPLACE DIAPHRAGMS.
3. REMOVE AND REPLACE ELESTOMERIC BEARINGS.

GENERAL NOTES

PLAN DIMENSIONS AND DETAILS RELATIVE TO EXISTING PLANS ARE SUBJECT TO NOMINAL CONSTRUCTION VARIATIONS. THE CONTRACTOR SHALL FIELD VERIFY EXISTING DIMENSIONS AND DETAILS AFFECTING NEW CONSTRUCTION AND MAKE NECESSARY APPROVED ADJUSTMENTS PRIOR TO CONSTRUCTION OR ORDERING OF MATERIALS. SUCH VARIATIONS SHALL NOT BE CAUSE FOR ADDITIONAL COMPENSATION FOR A CHANGE IN SCOPE OF WORK, HOWEVER, THE CONTRACTOR WILL BE PAID FOR THE QUANTITY ACTUALLY FURNISHED AT THE UNIT PRICE BID FOR THE WORK.



ELEVATION VIEW



PLAN VIEW

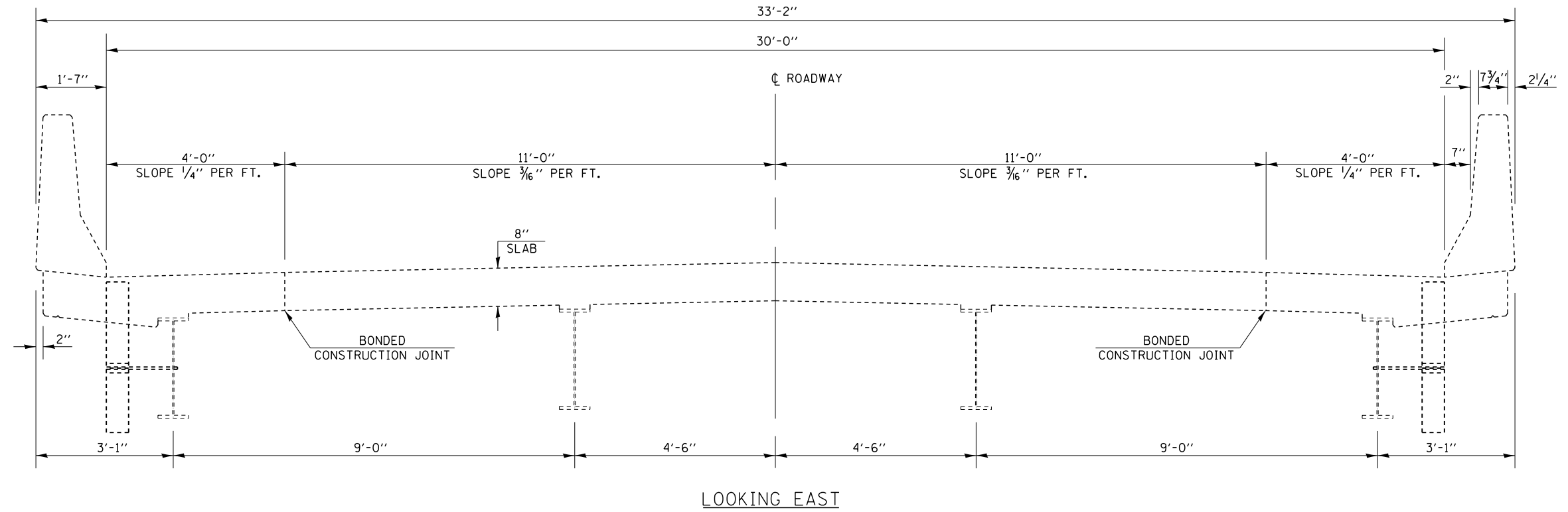


David Carl Puzey 4/30/17
Expires 11/30/18

FILE NAME: p:\11284\BID\INTEG\Illinois.gov\PI\DOT\Documents\11007\0\Office\District 5\Projects\057\DR\MSData\Structures\0570C32.Str.Rep\REVISED.dgn	USER NAME: shawler	DESIGNED: FSS	REVISED: 1	STATE OF ILLINOIS DEPARTMENT OF TRANSPORTATION	GENERAL PLAN & ELEVATION S.N. 010-0240		F.A.S. RTE.: 526	SECTION: 58BRR	COUNTY: CHAMPAIGN	TOTAL SHEETS: 19	SHEET NO.: 4
PLOT SCALE: 48.0000 / in.	CHECKED: -	DATE: TJB	REVISED: -		SCALE: SHEET 1 OF 14 SHEETS	STA. TO STA.	ILLINOIS FED. AID PROJECT		CONTRACT NO. 70C32		
PLOT DATE: 11/3/2016	DATE: TJB	REVISED: -	REVISED: -		REV						

EXISTING DECK CROSS SECTION

S.N. 010-0240



FILE NAME =	USER NAME = showleres	DESIGNED - _____	REVISED - _____
p:\11\084EBIDINTEG.illinois.gov\PIWIDOT\Documents\DOT Offices\District 5\Projects\0570\Drawings\Structures\0570C32.Str.Rep.dgn		DRAWN - _____	REVISED - _____
\$MODELNAME\$	PLOT SCALE = 40.0000' / in.	CHECKED - _____	REVISED - _____
	PLOT DATE = 12/6/2016	DATE - _____	REVISED - _____

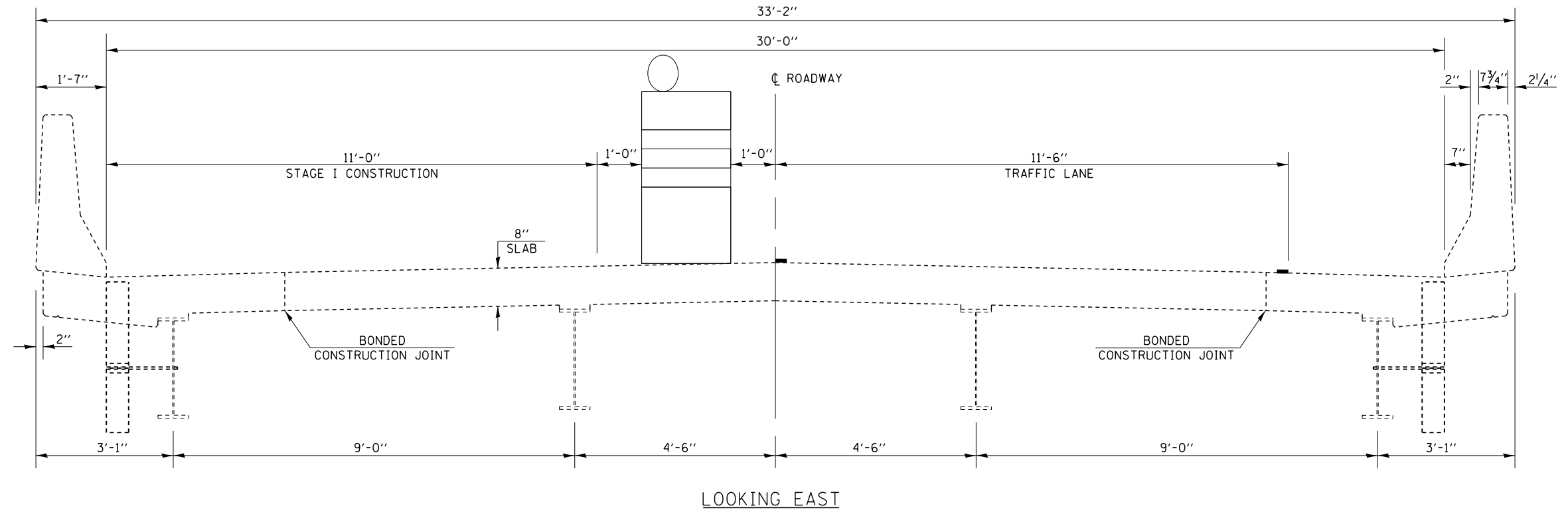
**STATE OF ILLINOIS
DEPARTMENT OF TRANSPORTATION**

**EXISTING DECK CROSS SECTIONS
S.N. 010-0240**

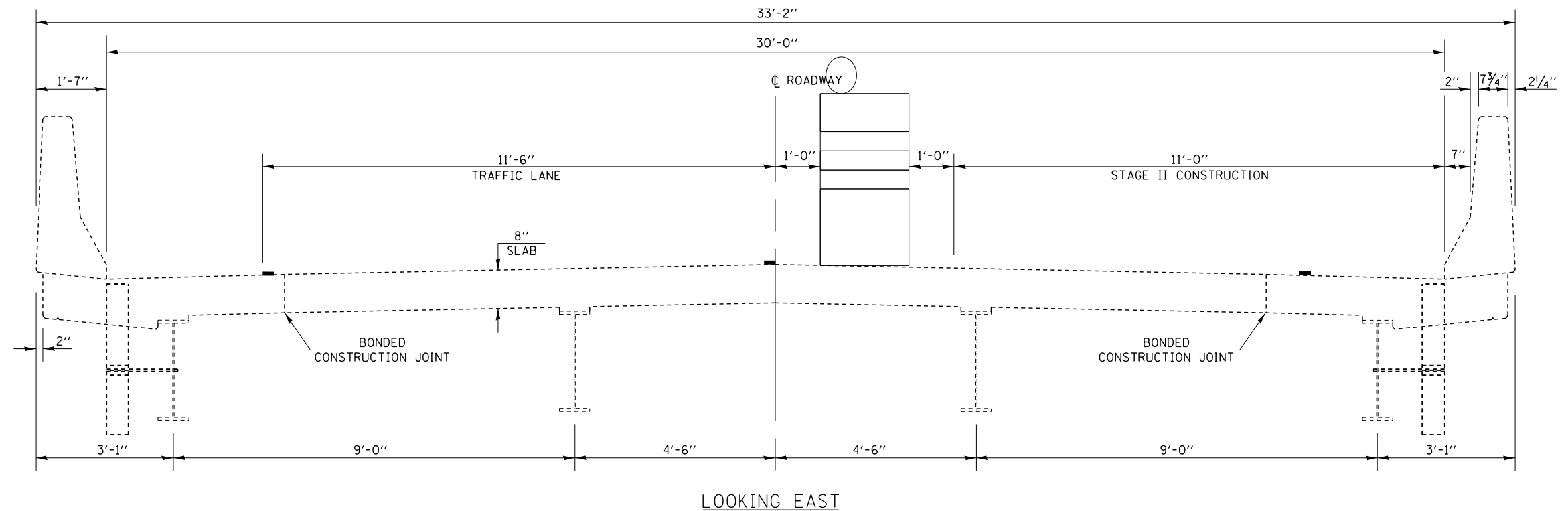
SCALE: _____ SHEET 2 OF 14 SHEETS STA. _____ TO STA. _____

F.A.S. RTE.	SECTION	COUNTY	TOTAL SHEETS	SHEET NO.
526	(58)BR	CHAMPAIGN	19	5
CONTRACT NO. 70C32			ILLINOIS FED. AID PROJECT	

STAGE I CONSTRUCTION DETAIL S.N. 010-0240



STAGE II CONSTRUCTION DETAIL S.N. 010-0240



FILE NAME =	USER NAME = showleres	DESIGNED - _____	REVISED - _____	STATE OF ILLINOIS DEPARTMENT OF TRANSPORTATION	STAGE CONSTRUCTION DETAILS S.N. 010-0240	F.A.S. RTE. 526	SECTION (58)BRR	COUNTY CHAMPAIGN	TOTAL SHEETS 12	SHEET NO. 6		
MODELNAME#	PLOT SCALE = 40.0000' / in.	CHECKED - _____	REVISED - _____			SCALE: _____	SHEET 3 OF 14 SHEETS	STA. _____	TO STA. _____	ILLINOIS FED. AID PROJECT		
	PLOT DATE = 12/6/2016	DATE - _____	REVISED - _____			CONTRACT NO. 70C32						

NOTES

All structural steel shall conform to AASHTO Classification M-270 Gr. 50, unless otherwise noted.

Fasteners shall be high strength bolts. Bolts 3/4"φ, open holes 13/16"φ, unless otherwise noted.

Diaphragm connection holes shall be 13/16"φ for 3/4"φ bolts. Two hardened washers shall be required at diaphragm connections.

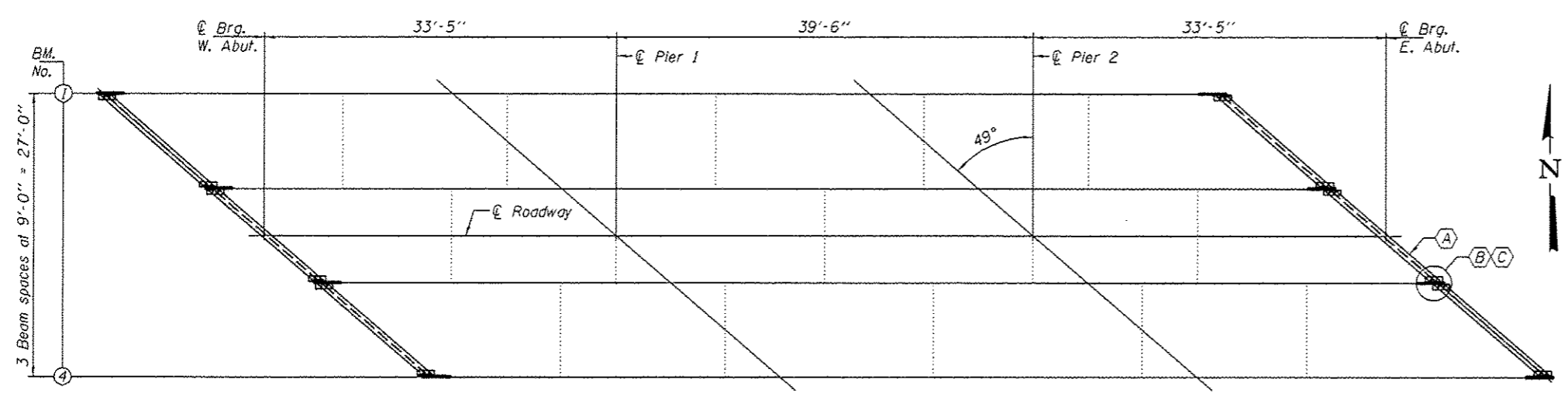
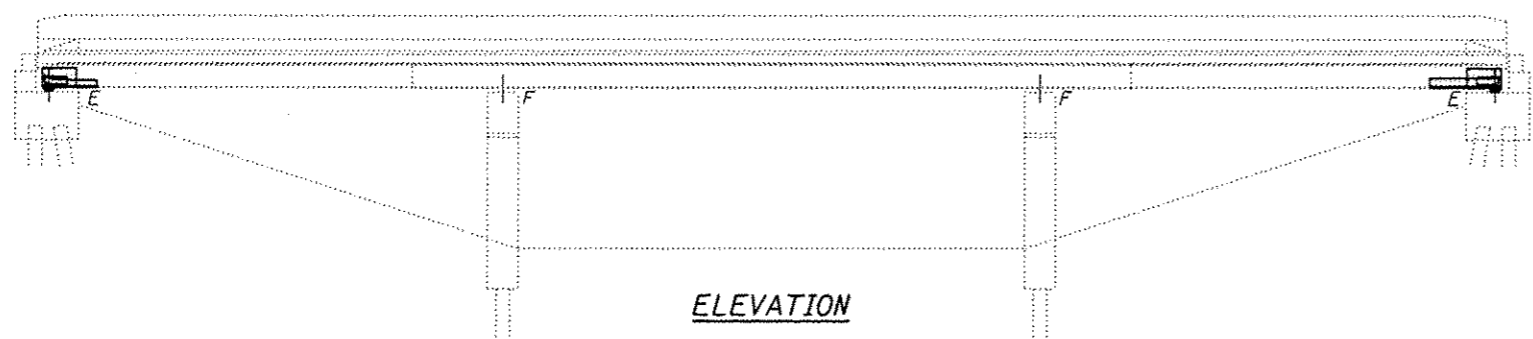
Plan dimensions and details relative to existing plans are subject to nominal construction variations. The Contractor shall field verify existing dimensions and details affecting new construction and make necessary approved adjustments prior to construction or ordering of materials. Such variations shall not be cause for additional compensation for a change in scope of the work, however, the Contractor will be paid for the quantity actually furnished at the unit price bid for the work.

The existing structural steel coating contains lead. The Contractor shall take appropriate precautions to deal with the presence of lead on this project.

Existing structural steel that will be in contact with new structural steel shall be cleaned and painted prior to erection as required by the GBSP "Cleaning and Painting Contact Surface Areas of Existing Steel Structures".

All structural steel shall be shop painted with the inorganic zinc rich primer per AASHTO M300, Type 1. Cost included with Structural Steel Repair or Furnishing and Erecting Structural Steel.

Cost of removal and re-installation of all members necessary to complete the work as detailed on the plans and as specified in the Special Provisions shall be included with Furnishing and Erecting Structural Steel.



FRAMING PLAN

- (A) - Remove and replace all end diaphragms.
- (B) - Beam End Repair. Typ. all beams.
- (C) - Remove and replace all abutment bearings.



Expires 11/30/18

BILL OF MATERIAL

ITEM	UNIT	QUANTITY
Structural Steel Removal	Pound	3750
* Furnishing and Erecting Structural Steel	Pound	3780
Structural Steel Repair	Pound	5290
Elastomeric Bearing Assembly, Type I	Each	8
Jack and Remove Existing Bearings	Each	8
Anchor Bolts 1"φ	Each	16

* Diaphragms & diaphragm clip angles only

DESIGNED: *[Signature]*
 CHECKED: *[Signature]*
 DRAWN: balva
 CHECKED: *[Signature]*

PASSED: *[Signature]*
 ACTING ENGINEER OF BRIDGES AND STRUCTURES

DATE: JANUARY 30, 2017
 REVISED: _____
 REVISED: _____

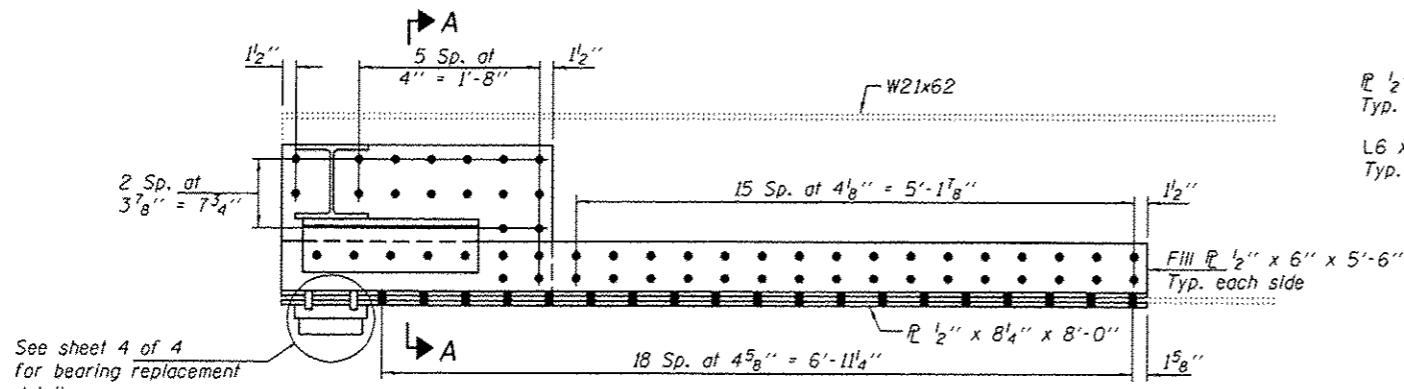
STATE OF ILLINOIS
 DEPARTMENT OF TRANSPORTATION

PLAN AND ELEVATION
 FAS 526 (CH 16) OVER E. BRANCH EMBARRAS RIVER
 SN 010-0240

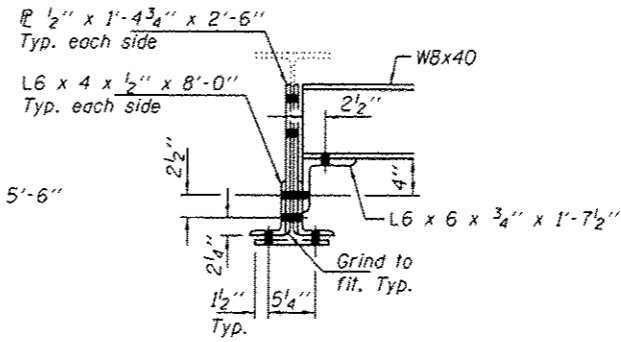
F.A.S. RTE.	SECTION	COUNTY	TOTAL SHEETS	SHEET NO.
526	15B/BRR	CHAMPAIGN	19	1

CONTRACT NO. 70C32
 SHEET NO. 1 OF 4 SHEETS
 ILLINOIS FED. AID PROJECT

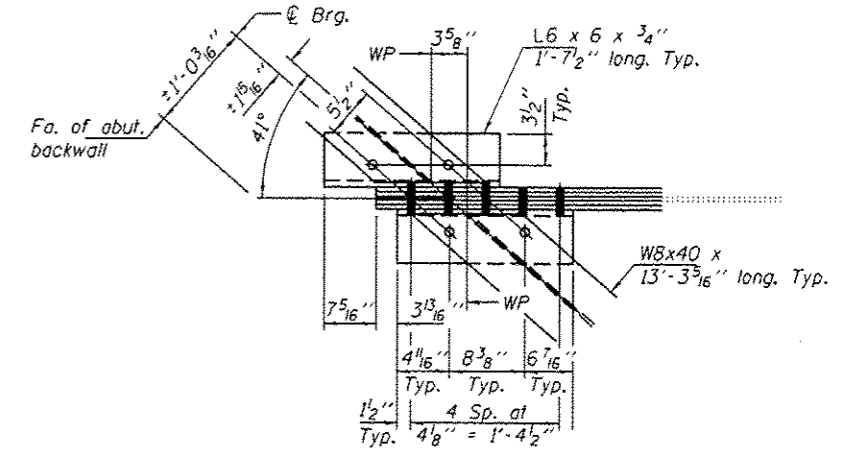
REV



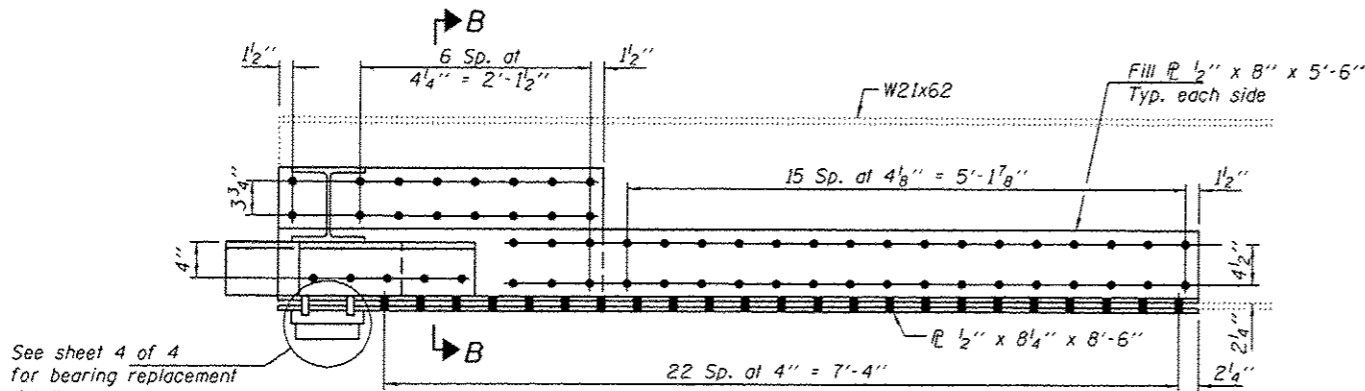
**REPAIR B
BEAM 1, W. ABUT.**



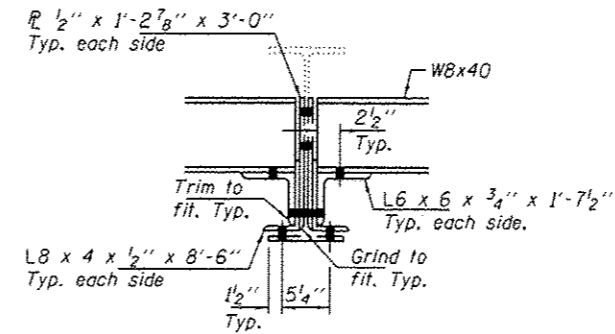
SECTION A-A



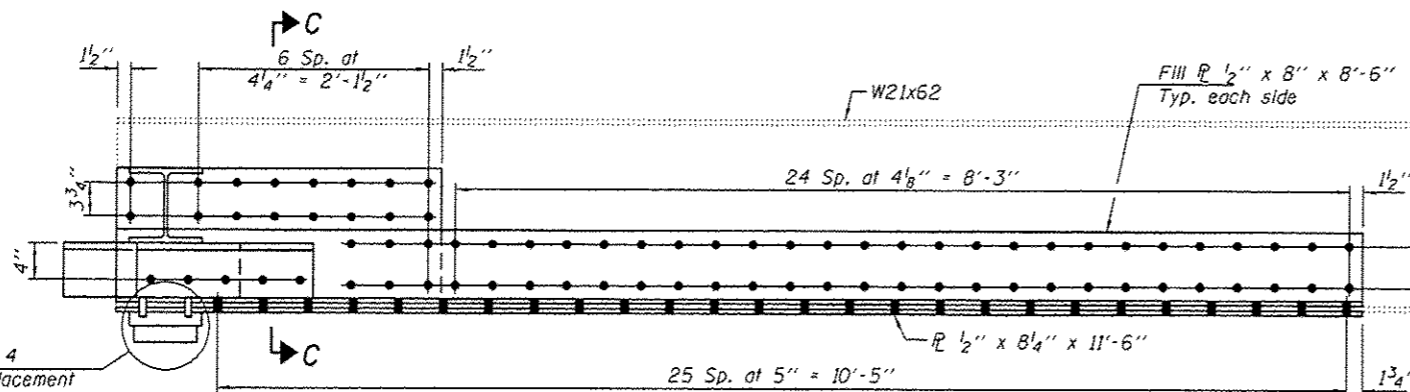
PLAN - REPAIR A



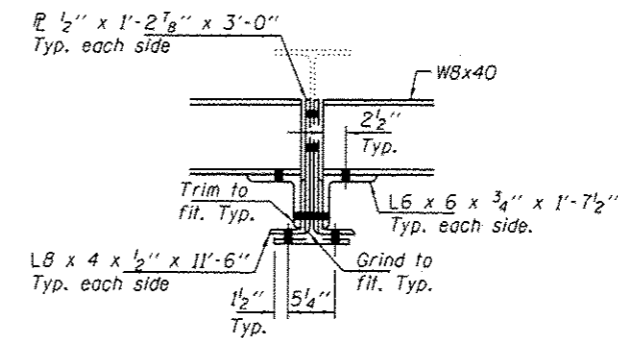
**REPAIR B
BEAM 2, E. & W. ABUTS.**



SECTION B-B



**REPAIR B
BEAM 3, W. ABUT.**



SECTION C-C

DESIGNED *DAB*
CHECKED *SMR*
DRAWN *baliva*
CHECKED *DAB SMR*

PASSED

D. Carl Perry
ENGINEER OF BRIDGES AND STRUCTURES

DATE JANUARY 30, 2017

REVISED
REVISED

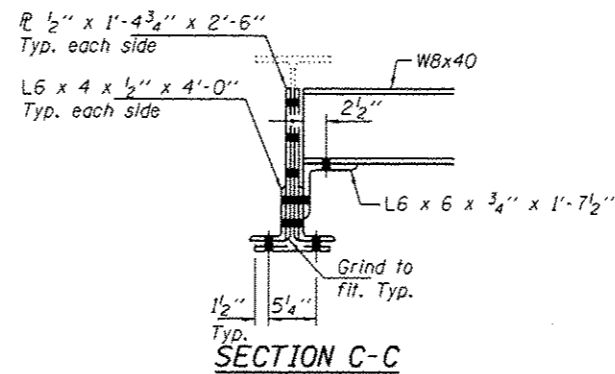
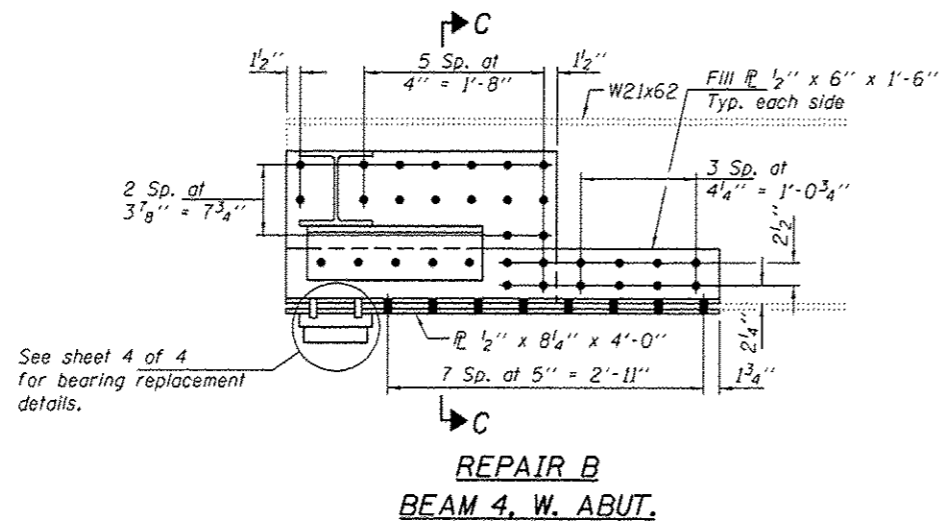
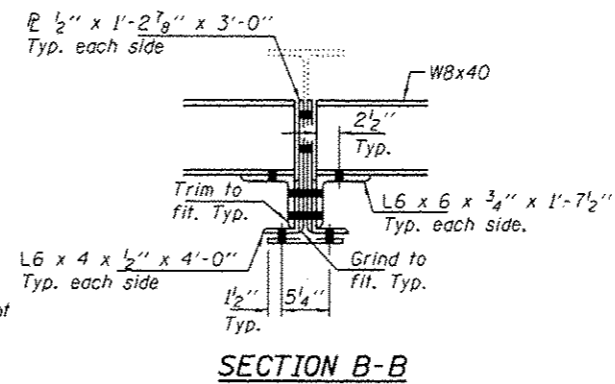
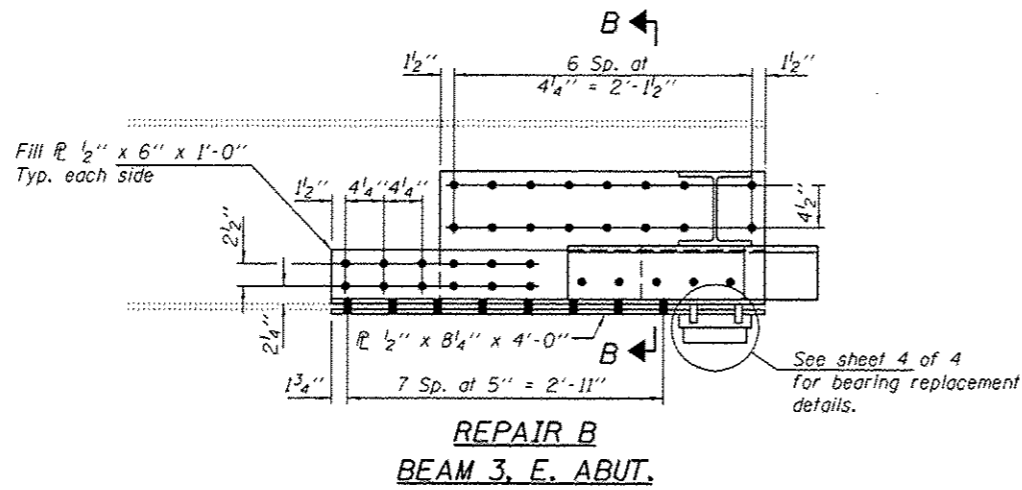
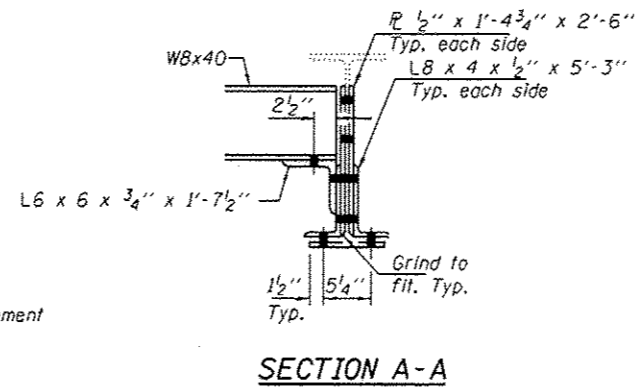
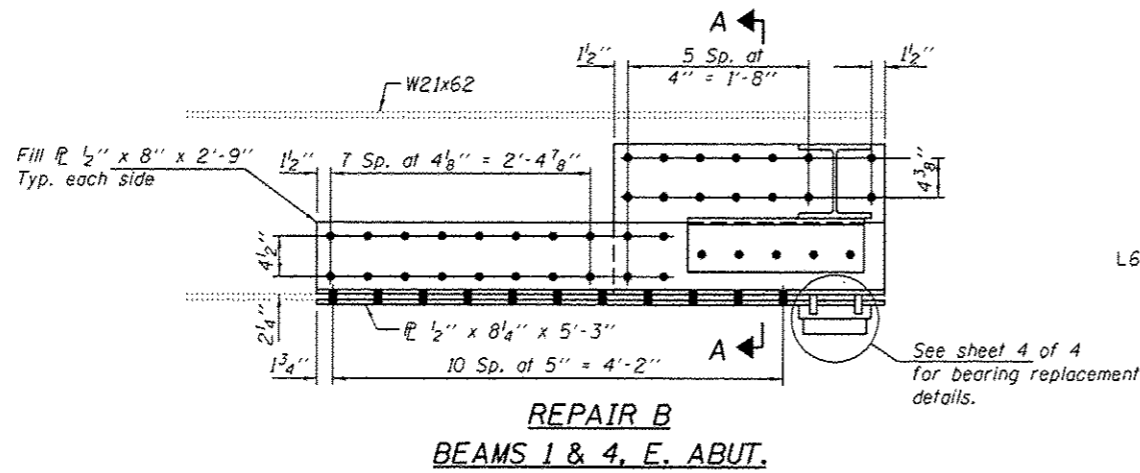
STATE OF ILLINOIS
DEPARTMENT OF TRANSPORTATION

REPAIR DETAILS
SN 010-0240

SHEET NO. 2 OF 4 SHEETS

F.A.S. RTE.	SECTION	COUNTY	TOTAL SHEETS	SHEET NO.
526	IS8IBRR	CHAMPAIGN	19	8
CONTRACT NO. 70C32			ILLINOIS FED. AID PROJECT	

REV



DESIGNED *DAB*
 CHECKED *SMR*
 DRAWN *baliva*
 CHECKED *DAB SMR*

PASSED
Carl Perry
 ENGINEER OF BRIDGES AND STRUCTURES

DATE JANUARY 30, 2017
 REVISED
 REVISED

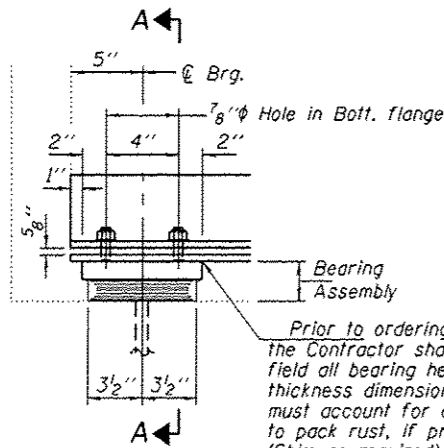
STATE OF ILLINOIS
 DEPARTMENT OF TRANSPORTATION

REPAIR DETAILS
 SN 010-0240

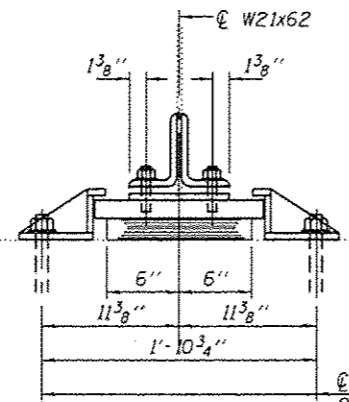
SHEET NO. 3 OF 4 SHEETS

F.A.S. RTE.	SECTION	COUNTY	TOTAL SHEETS	SHEET NO.
526	15B/BRR	CHAMPAIGN	19	9
CONTRACT NO. 70C32			ILLINOIS FED. AID PROJECT	

REV



ELEVATION AT ABUTMENT



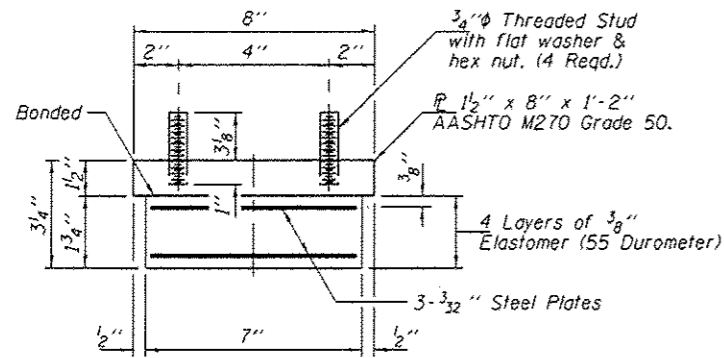
SECTION A-A

TYPE I ELASTOMERIC EXP. BRG.

BEAM REACTIONS

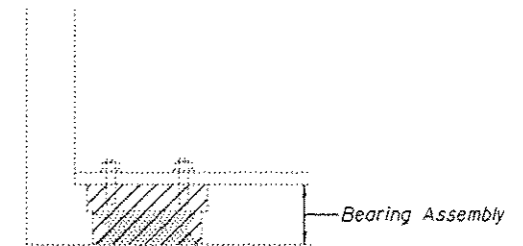
R _l	(K)	18.0
R _r	(K)	40.3
Imp.	(K)	12.1
R (Total)	(K)	70.4

Notes:
 New shim plates and connection bolts are included with Furnishing and Erecting Structural Steel.
 Min. jack capacity = 35 Tons.
 Anchor bolts shall be ASTM F1554 all-thread (or an Engineer-approved alternate material) of the grade(s) and diameter(s) specified. The corresponding specified grade of AASHTO M314 anchor bolts may be used in lieu of ASTM F1554.
 Drilled and set anchor bolts shall be installed according to Article 521.06 of the Standard Specifications.
 Side retainers shall be included in the cost of Elastomeric Bearing Assembly, Type I.



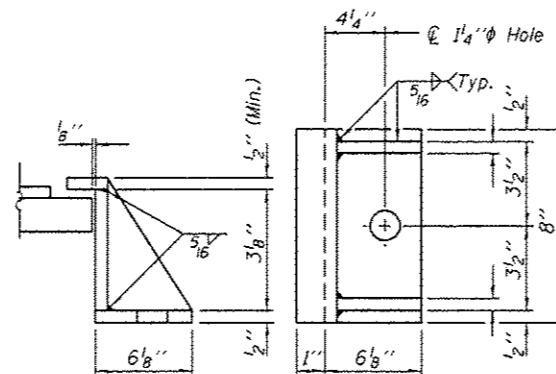
BEARING ASSEMBLY

Note:
 Shim plates shall not be placed under Bearing Assembly.



EXISTING BEARING REMOVAL DETAIL

Cost included with Jack and Remove Existing Bearings.



SIDE RETAINER

Equivalent rolled angle with stiffeners will be allowed in lieu of welded plates.

BILL OF MATERIAL

Item	Unit	Total
Elastomeric Bearing Assembly, Type I	Each	8
Jack and Remove Existing Bearings	Each	8
Anchor Bolts 1" dia	Each	16

TYI/REPS 12-03-2008

DESIGNED	DAB
CHECKED	SMR
DRAWN	baliva
CHECKED	DAB SMR

PASSED

 ENGINEER OF BRIDGES AND STRUCTURES

DATE	JANUARY 30, 2017
REVISED	
REVISED	

STATE OF ILLINOIS
 DEPARTMENT OF TRANSPORTATION


ABUTMENT BEARING REPLACEMENT DETAILS
 SN 010-0240

SHEET NO. 4 OF 4 SHEETS

F.A.S. RTE.	SECTION	COUNTY	TOTAL SHEETS	SHEET NO.
526	15B1RR	CHAMPAIGN	19	10
CONTRACT NO. 70C32				
ILLINOIS FED. AID PROJECT				

REV

THIS SHEET LEFT
INTENTIONALLY BLANK

DESIGNED <i>DAB</i>	PASSED  ENGINEER OF BRIDGES AND STRUCTURES	DATE <i>JANUARY 13, 2017</i>	STATE OF ILLINOIS DEPARTMENT OF TRANSPORTATION	SHEET NO. 1 OF 1 SHEETS	ILLINOIS FED. AID PROJECT					
CHECKED <i>SMR</i>		REVISOR				F.A.S. RTE.	SECTION	COUNTY	TOTAL SHEETS	SHEET NO.
DRAWN <i>baliva</i>		REVISOR				526	15B1BR	CHAMPAIGN	19	11
CHECKED <i>DAB SMR</i>		REVISOR				CONTRACT NO. 70C32				

REV

AS-BUILT PLANS FOR INFORMATION ONLY

**STATE OF ILLINOIS
DEPARTMENT OF TRANSPORTATION
DIVISION OF HIGHWAYS**

PLANS FOR PROPOSED FEDERAL AID HIGHWAY

FOR INDEX OF SHEETS, SEE SHEET NO. 4A
FOR SUMMARY OF QUANTITIES, SEE SHEET NO. 4B

PLAN 1" = 20'
PROFILE HORIZ. 1" = 50'
PROFILE VERT. 1" = 5'
CROSS SECTIONS 1" = 10' (HORIZ.)
1" = 5' (VERT.)

F.A.S. ROUTE 526, SECTION 58BR CHAMPAIGN COUNTY PROJECT BR-5-526 (102)

C-95-038-81
BRIDGE REPLACEMENT

PROJECT	SECTION	COUNTY	TOTAL SHEETS
526	58BR	CHAMPAIGN	19
SHEET NO.			12

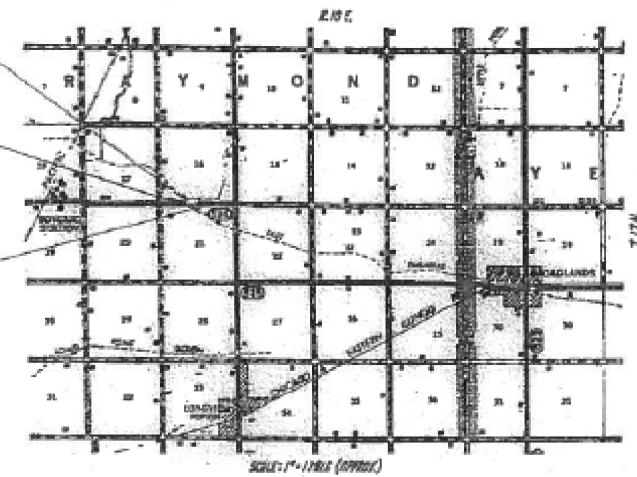
F-25-024-73



SPECIAL BRIDGE DESIGN, SECTION 58BR
6" x 6" SLAB ON STEEL 1" x 18" BEAMS IN
NEW PILES AND ABUTMENTS
3 SPANS, 2 @ 13'-5" & 1 @ 25'-6"
30'-2" NET TO NET WITH 30'-0" ROADWAY
@ STR. 91+73

PROJECT BR-5-526 (102) #
SECTION 58 BR INLETS
STR. 93+00

PROJECT BR-5-526 (102) #
SECTION 58 BR ENDS
STR. 82+50



**STATE OF ILLINOIS
DEPARTMENT OF TRANSPORTATION
DIVISION OF HIGHWAYS**

DESIGNED: June 20, 1981
Robert F. Kramel DESIGN ENGINEER

CHECKED: Sept 1, 1981
[Signature] REVIEW ENGINEER

PREPARED: Sept 1, 1981 DIVISION OF PLANS AND ESTIMATES
[Signature]

APPROVED: Sept 1, 1981 DIVISION OF HIGHWAYS
[Signature] DIVISION CHIEF OF OFFICE

**STATE OF ILLINOIS
DEPARTMENT OF TRANSPORTATION
FEDERAL AID ADMINISTRATION**

APPROVED: _____
DISTRICT ADMINISTRATOR

DESIGN INFORMATION
450(70) 7/80R 01/10/80 01/10/80

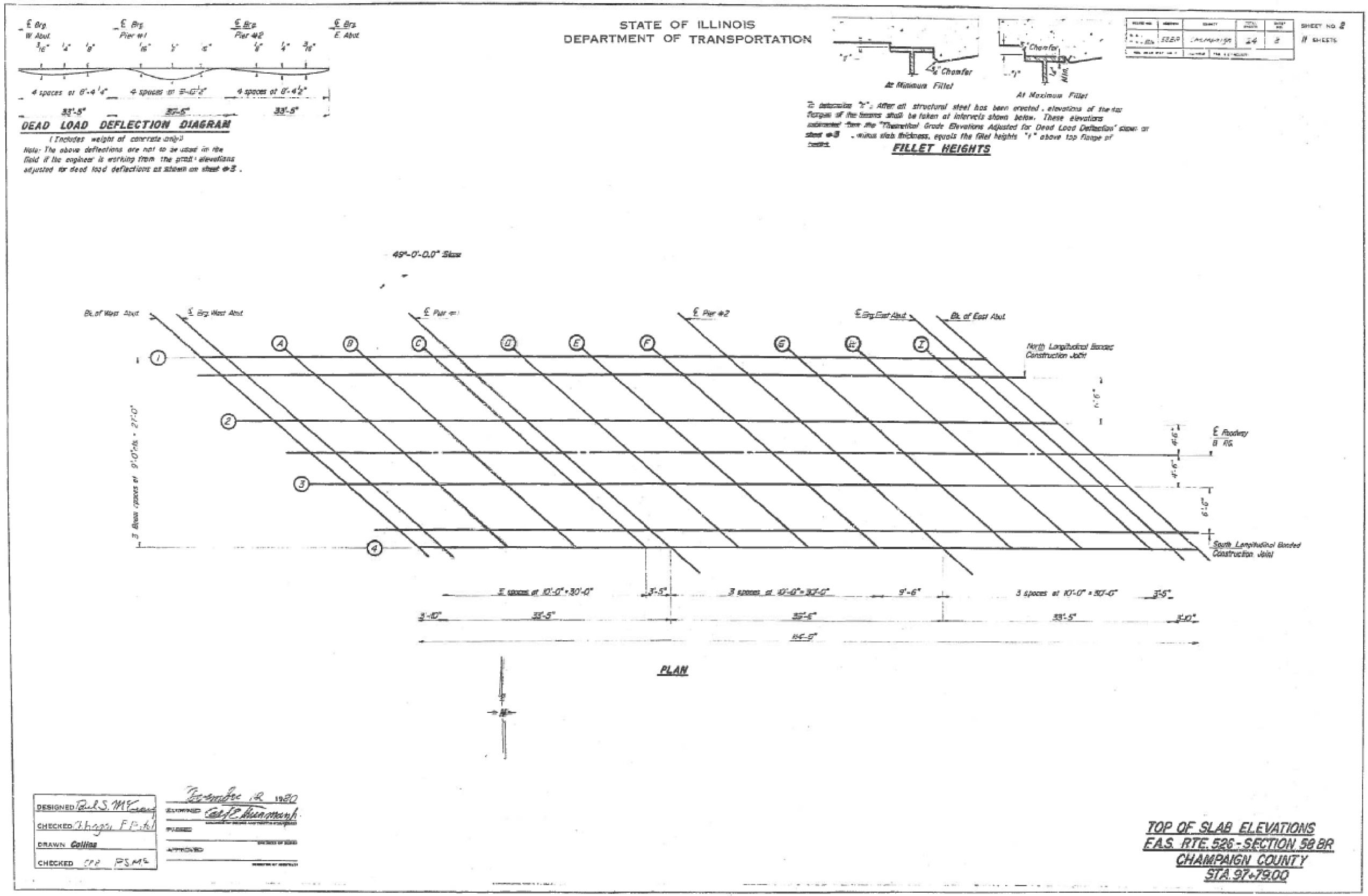
NOTE: SEE PLAN LENGTH OF SECTION 58 BR • 9' SLAB FEET = 0.180 FT PER
NOTE: SEE PLAN LENGTH OF PROJECT BR-5-526 (102) • 5' SLAB FEET = 0.180 FT PER

TOLL FREE 1-811, P.O. BOX 492-0173
CHAMPAIGN, ILLINOIS

CONTRACT NO. 35237

FILE NAME =	USER NAME = showlers	DESIGNED -	REVISED -	STATE OF ILLINOIS DEPARTMENT OF TRANSPORTATION	AS-BUILT PLAN FOR INFORMATION ONLY	F.A.S. RTE.	SECTION	COUNTY	TOTAL SHEETS	SHEET NO.
pw\11084EBIDINTEG.illinois.gov\PIWIDOT\Documents\DOT Offices\District 5\Projects\0570\DRAWINGData\Structures\0570C32.Str.Rep\REVISED.dgn	PLOT SCALE = 40.0000' / in.	CHECKED -	REVISED -			526	(58)BR	CHAMPAIGN	19	12
\$MODELNAME\$	PLOT DATE = 11/3/2016	DATE -	REVISED -			SCALE: SHEET 9 OF 14 SHEETS STA. TO STA.		CONTRACT NO. 70C32		ILLINOIS FED. AID PROJECT

AS-BUILT PLANS FOR INFORMATION ONLY



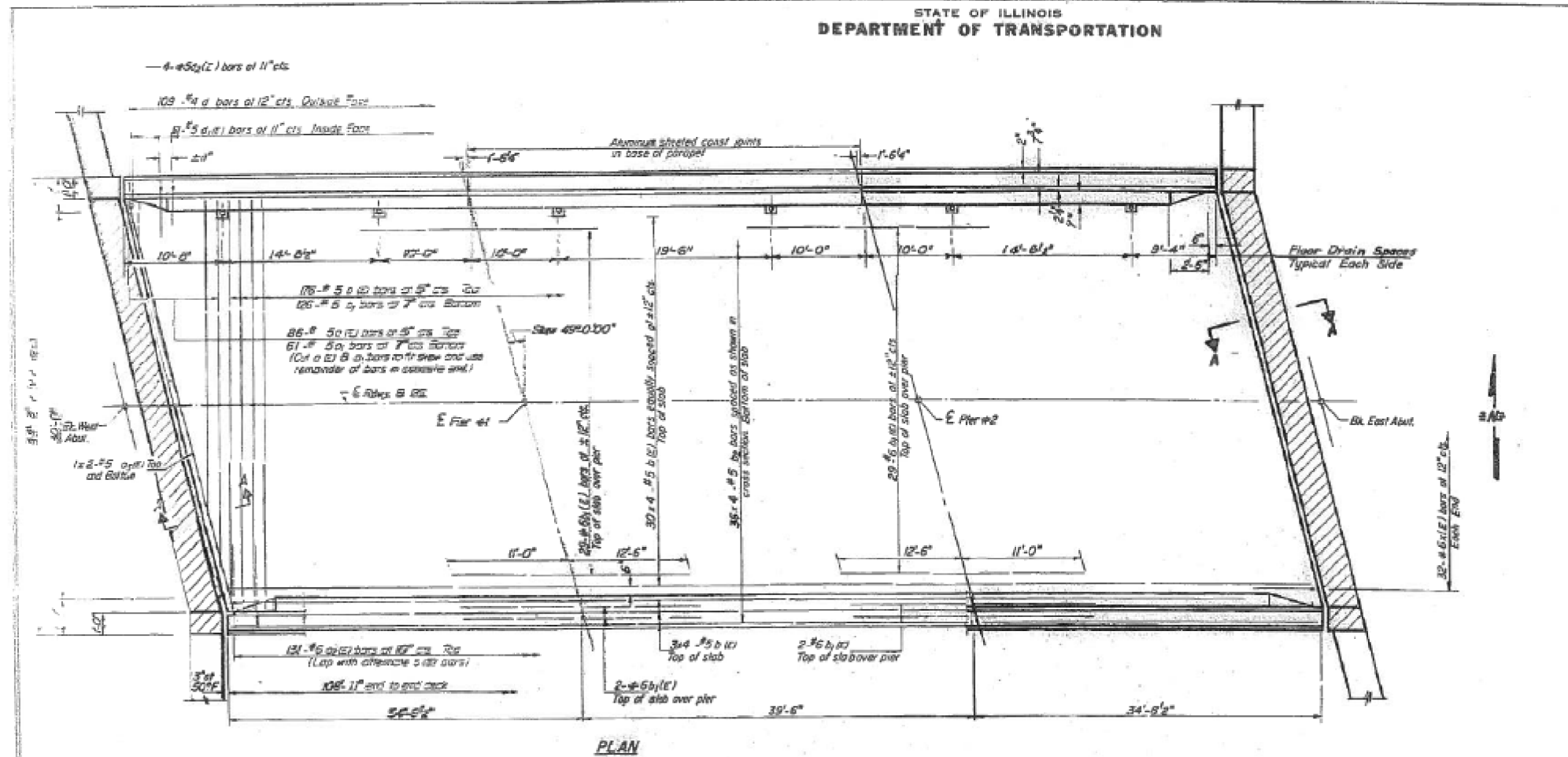
FILE NAME =	USER NAME = showleres	DESIGNED -	REVISED -	STATE OF ILLINOIS DEPARTMENT OF TRANSPORTATION	AS-BUILT PLAN FOR INFORMATION ONLY	F.A.S. RTE. 526	SECTION (58)BRR	COUNTY CHAMPAIGN	TOTAL SHEETS 19	SHEET NO. 13
MODELNAME#	PLOT DATE = 11/3/2016	CHECKED -	REVISED -	SCALE:	SHEET 10 OF 14 SHEETS	STA.	TO STA.	ILLINOIS FED. AID PROJECT		

AS-BUILT PLANS FOR INFORMATION ONLY

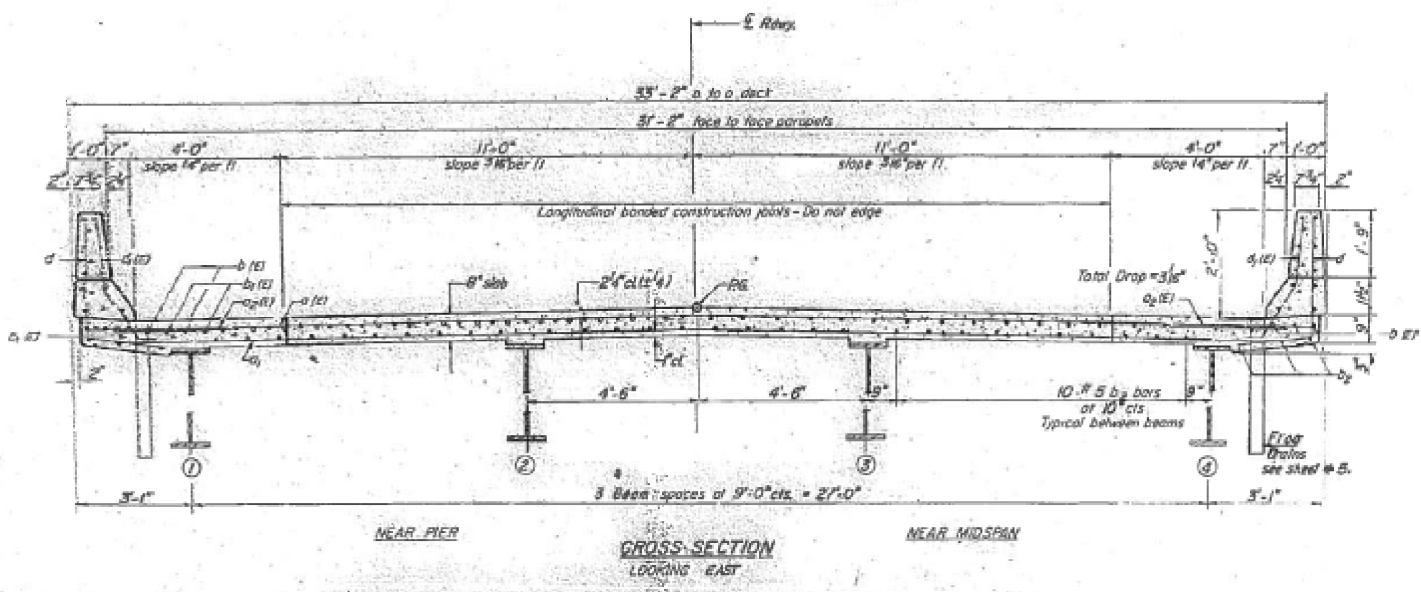
STATE OF ILLINOIS
DEPARTMENT OF TRANSPORTATION

PROJECT NO.	SECTION	COUNTY	TOTAL SHEETS	SHEET NO.
526	(58)BRR	CHAMPAIGN	19	14

SHEET NO. 14
OF 19 SHEETS



MIN. BAR LAPS
#5 bars 2'-0"



NOTES:
See sheet #5 for superstructure details and Bill of Material
Reinforcement bars designated (E) shall be epoxy coated. See Special Provisions
Bars indicated thus 20 x 3 #5 etc indicates 20 lines of bars with 3 lengths per line
Hatched area to be placed after superstructure forms have been removed.

DESIGNED: Paul S. Mc...
CHECKED: Chhagan P. Patel
DATE: November 12, 2014

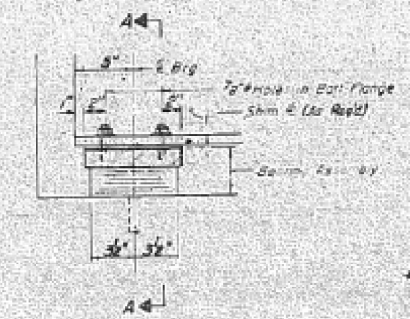
SUPERSTRUCTURE
F.A.S. RTE. 526 - SECTION 568R
CHAMPAIGN COUNTY
STA. 97+79.00

FILE NAME:	USER NAME: showleres	DESIGNED: Paul S. Mc...	REVISED: -	STATE OF ILLINOIS DEPARTMENT OF TRANSPORTATION	AS-BUILT PLAN FOR INFORMATION ONLY	SCALE:	SHEET 11 OF 14 SHEETS	STA. TO STA.	F.A.S. RTE. 526	SECTION (58)BRR	COUNTY CHAMPAIGN	TOTAL SHEETS 19	SHEET NO. 14
MODELNAME:	PLOT DATE: 11/3/2016	CHECKED: Chhagan P. Patel	REVISOR: -	CONTRACT NO. 70C32						ILLINOIS FED. AID PROJECT			

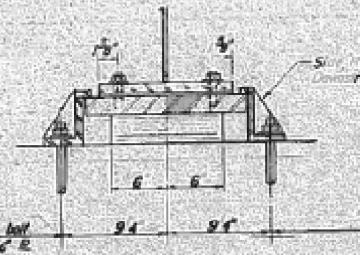
AS-BUILT PLANS FOR INFORMATION ONLY

STATE OF ILLINOIS
DEPARTMENT OF TRANSPORTATION

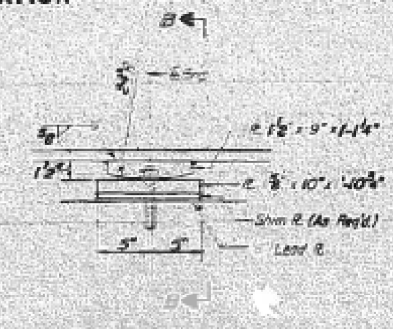
DATE	24	14	SHEET NO. 8
PROJECT	Champaign		11 SHEETS



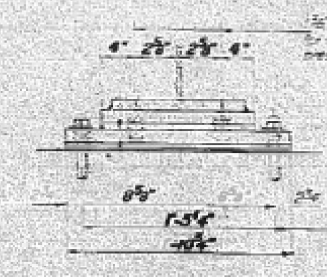
SECTION AT ABUTS



SECTION -A
(of Pier #1)

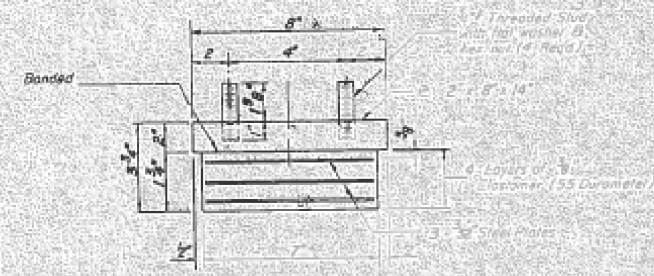


ELEVATION OF PIERS



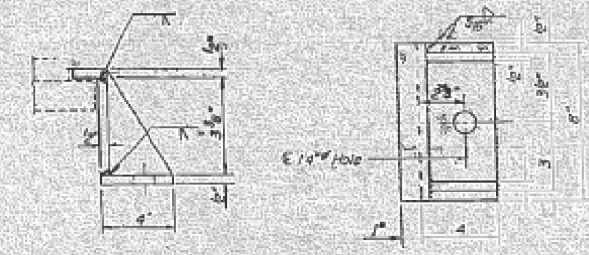
SECTION B-B

TYPE I ELASTOMERIC EXP. BRG.
(Each Abutment)



BEARING ASSEMBLY

Note: Shim plates shall not be placed in Bearing Assembly.



SIDE RETAINER
(No. RWd. 10)

INTERIOR GIRDER MOMENT TABLE

	0.4 Span #1 @	Span	Piers #1 & 2	0.5 Span #2
I_g (in ⁴)	1350		2420	2420
I_c (in ⁴)	4665			720.2
S_x (in ³)	127			227
S_y (in ³)	212.5			343.3
R (in)	994		1081	1081
M_g (k)	74			54.0
I_g non-comp (k)	7.0			2.9
S_g (k ²)	43		43	43
M_{SG} (k)	33			
M_g (k)	229.7		149.6	256.7
M_{SGP} (k)	60.9		43.4	72.0
Total (k)	337		235.0	378.8
I_g comp (k)	19.1		9	13.0
I_g TOTAL (k)	28		7	15.9
VR (k)	56.7			48.1

INTERIOR GIRDER REACTION TABLE

	Abut	Piers #1 & 2
R_B (k)		
R_C (k)		317
R_{DIP} (k)		
R_{TOTAL} (k)	714	125.6

Note: Values shown tables based upon various loads and design parameters for various loads. Span #1: $L_{SD} = 127 - 24 = 103$ ft. Span #2: $L_{SD} = 155$ ft. $R_{TOTAL} = 2 \times 103 \times 1.5 = 309$ k.

I_g and S_x are the moment of inertia and section modulus of the steel section used in computing I_g TOTAL.
 I_c and S_y are the moment of inertia and section modulus of the composite section used in computing I_g TOTAL.
 VR is the maximum \pm support shear range span used to determine shear connector spacing.

TOP OF FLANGE ELEVATIONS

Span #	F. & W. Apex	Piers	#2 Spans
Span #1	669.99	669.01	669.01
Span #2	669.14		669.01
Span #3	669.14	669.01	
Span #4	669.99	669.01	

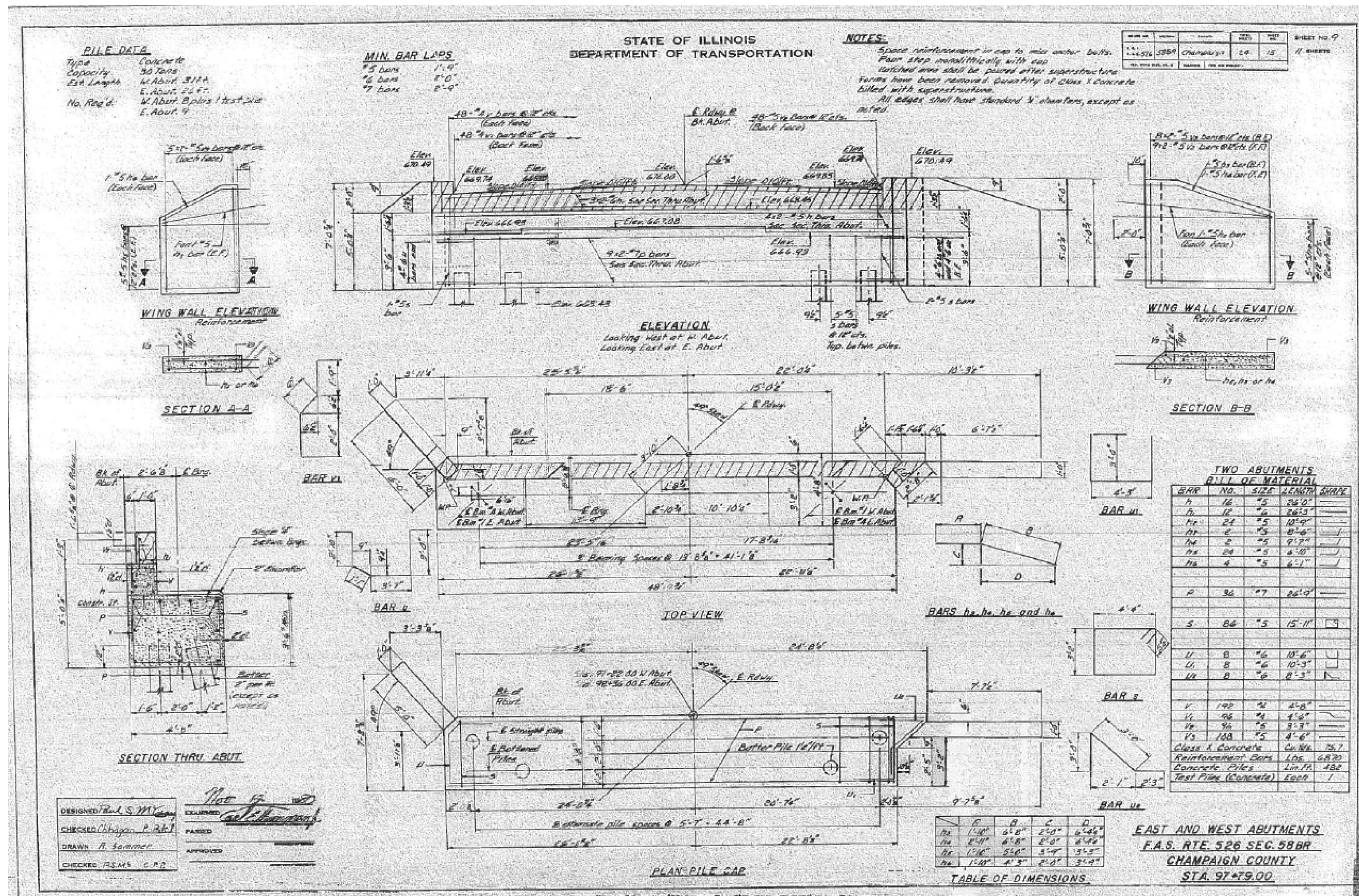
*** For Fabrication Only

DESIGNED: Paul S. M...
 EXAMINED: [Signature]
 C-CHECKED: Champaign R.P. Tol...
 DRAWN: [Signature]
 CHECKED: C.H.P. [Signature]

Item	Quantity	Unit
Expansion Bearing Assembly Type I	1	Each

BEARING DETAILS
F.A.S. RTE. 526 SECTION 58 BR
CHAMPAIGN COUNTY
STA. 97+73.00

AS-BUILT PLANS FOR INFORMATION ONLY



PILE DATA
 Type Concrete
 Capacity 30 Tons
 Est. Length W. Abut. 31 ft
 E. Abut. 24 ft
 No. Rods W. Abut. 8 plus 1 test pile
 E. Abut. 4

MIN. BAR LAPS
 #5 bars 1'-9"
 #6 bars 2'-0"
 #7 bars 2'-0"

STATE OF ILLINOIS
 DEPARTMENT OF TRANSPORTATION

NOTES:
 Space reinforcement in cap to mix with bolts.
 Pour step monolithically with cap
 finished over shall be poured after superstructure
 forms have been removed. Quantity of Class X Concrete
 billed with superstructure.
 All edges shall have standard 1/4" chamfers, except as
 noted.

PROJECT NO.	SECTION	SHEET NO.	TOTAL SHEETS
11-0576	58BR	19	17

**TWO ABUTMENTS
 BILL OF MATERIAL**

BAR NO.	SIZE	LENGTH	SHAPE
1	16	5	24" D
2	12	6	24" D
3	21	5	10" D
4	2	5	8" D
5	2	5	9" D
6	24	5	8" D
7	4	5	4" D
8	36	7	24" D
9	86	5	15" D
10	8	6	10" D
11	8	6	10" D
12	8	6	8" D
13	192	4	4" D
14	96	4	4" D
15	96	5	9" D
16	168	5	4" D
Class X Concrete Cu. Yds. 75.7			
Reinforcement Bars Lbs. 6870			
Concrete Piles Lin. Ft. 480			
Test Pile (Concrete) Each 1			

TABLE OF DIMENSIONS

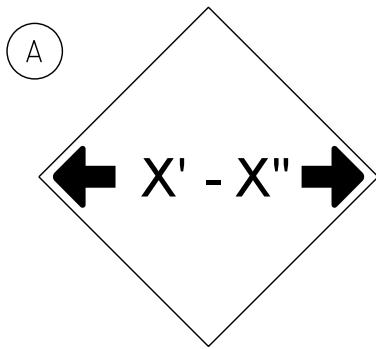
	F	B	C	D
H1	1'10"	6'8"	2'0"	6'4"
H2	2'4"	6'8"	2'0"	6'4"
H3	1'10"	5'4"	3'0"	5'3"
H4	1'10"	4'3"	2'0"	3'9"

**EAST AND WEST ABUTMENTS
 F.A.S. RTE. 526 SEC. 58BR
 CHAMPAIGN COUNTY
 STA. 97+79.00**

DESIGNED: R.S.M.S.
 CHECKED: Chhagan P. Patel
 DRAWN: R. Sommer
 CHECKED: R.S.M.S. C.P.R.

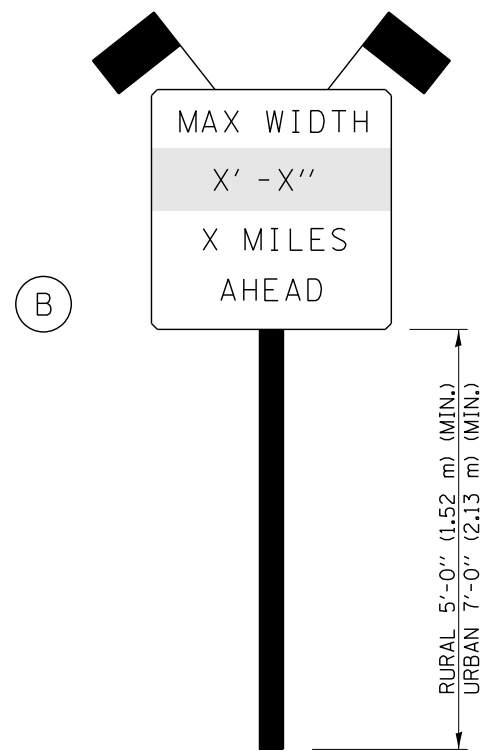
DATE: 11/03/2016

STAGE ONE (ONLY)

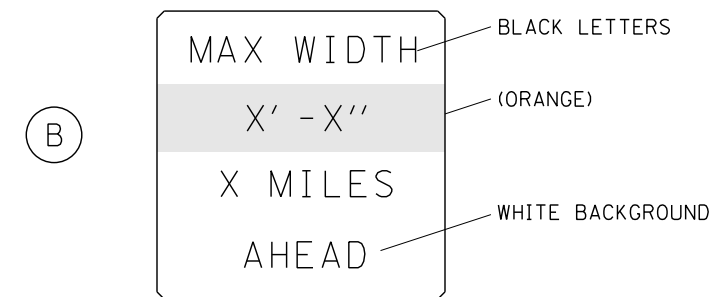


W12-2(0) - 48"x48" (1200x1200)

SIGN (A) 2 SIGNS - W12-2(0) - 48"x48" (1200x1200) ARE TO BE PLACED AS SHOWN IN THE PLANS OR AS DIRECTED BY THE ENGINEER.



SIGN PANEL, TYPE II



W12-I103(0) - 48"x48" (1200x1200)
"D" LETTERS/NUMBERS

SIGN (B) 2 SIGNS - (SIGN PANEL, TYPE II) AS SHOWN ARE TO BE PLACED AS SHOWN IN THE PLANS OR AS DIRECTED BY THE ENGINEER.

STAGE WIDTHS:

STAGE 1 WIDTH = 16'-0" ACTUAL; 14'-6" POSTED; REQUIRED
 STAGE 2 WIDTH = 16'-0" ACTUAL; 14'-6" POSTED; REQUIRED

GENERAL NOTES

1. ALL TRAFFIC CONTROL DEVICES SHALL BE FURNISHED, ERECTED AND MAINTAINED BY THE CONTRACTOR.
2. ALL (B) SIGNS SHALL HAVE FLAGS INSTALLED UNLESS OTHERWISE DIRECTED.
3. LOCATIONS OF TRAFFIC CONTROL DEVICES MAY BE ADJUSTED BY THE ENGINEER.
4. ALL TRAFFIC CONTROL SHOWN ON THIS SHEET SHALL BE PAID FOR AT THE CONTRACT LUMP SUM PRICE FOR WIDTH RESTRICTION SIGNING.
5. ALL SIGNS SHALL BE POST MOUNTED UNLESS OTHERWISE DIRECTED.
6. ALL SIGNS SHOWN ORANGE (O) SHALL BE FLUORESCENT ORANGE.
7. ALL SIGNS SHOWN SHALL CONSIST OF THE CURRENT RETROREFLECTIVE SHEETING REQUIREMENTS AS OUTLINED IN SECTION 1106.01 OF THE STANDARD SPECIFICATIONS BOOK.

Note: All dimensions are in INCHES (millimeters) unless otherwise shown.

FILE NAME =	USER NAME = showleres	DESIGNED - -	REVISED - -	STATE OF ILLINOIS DEPARTMENT OF TRANSPORTATION	WIDTH RESTRICTION SIGNING S.N. 010-0240	SCALE: _____	SHEET NO. 1 OF 2 SHEETS	STA. _____ TO STA. _____
p:\11\084EBIDINTEG.illinois.gov\PWIDOT\Documents\DOT Offices\District 5\Projects\0579\Drawings\Structures\0570C32.Str.Reports\0570C32.dgn	DRAWN	CHECKED - -	REVISED - -					
PLOT SCALE = 40.0000' / in.		DATE - -	REVISED - -					
PLOT DATE = 12/6/2016			REVISED - -					

DISTRICT 5 DETAIL NO. X7200201				
F.A.S. RTE.	SECTION	COUNTY	TOTAL SHEETS	SHEET NO.
526	(58)RR	CHAMPAIGN	18	18
			CONTRACT NO. 70C32	
FED. ROAD DIST. NO. _____ ILLINOIS FED. AID PROJECT				

