

03-03-2017 LETTING ITEM 031

STATE OF ILLINOIS
DEPARTMENT OF TRANSPORTATION

F.A. RTE.	SECTION	COUNTY	TOTAL SHEETS	SHEET NO.
VAR.		VAR.	16	1
		ILLINOIS	CONTRACT NO. 72J28	

+ D6 BDGE DECK SEALING 2017

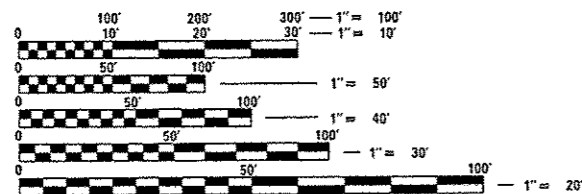
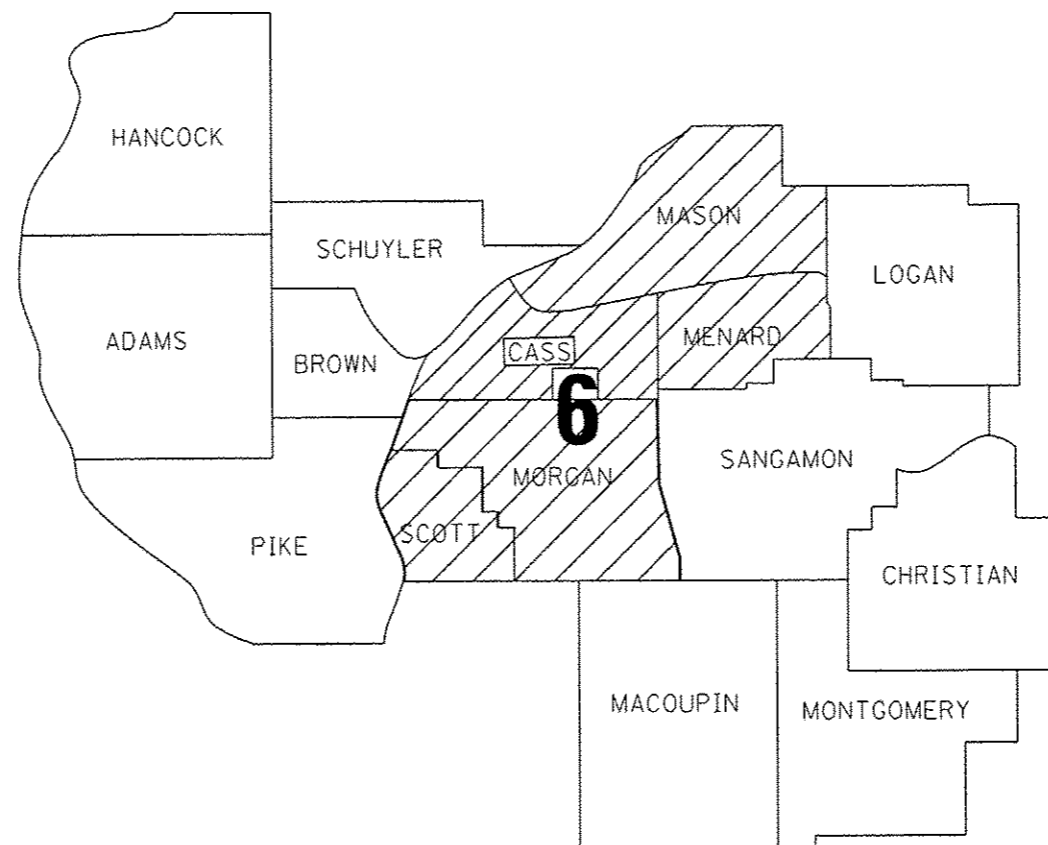
D-96-066-16

FOR INDEX OF SHEETS, SEE SHEET NO. 2

PROPOSED HIGHWAY PLANS

VARIOUS ROUTES
SECTION D6 BDGE DECK SEALING 2017
VARIOUS COUNTIES
BRIDGE DECK SEALING

C-96-066-16



FULL SIZE PLANS HAVE BEEN PREPARED USING STANDARD ENGINEERING SCALES. REDUCED SIZED PLANS WILL NOT CONFORM TO STANDARD SCALES. IN MAKING MEASUREMENTS ON REDUCED PLANS, THE ABOVE SCALES MAY BE USED.

J.U.L.I.E.
JOINT UTILITY LOCATION INFORMATION FOR EXCAVATION
1-800-892-0123
OR 811

PROJECT ENGINEER: (217)785-9046 JAY WAVERING
PROJECT MANAGER: (217)524-0472 VICTOR YOUNG

CONTRACT NO. 72J28

STATE OF ILLINOIS
DEPARTMENT OF TRANSPORTATION

SUBMITTED *29 November 2016*

[Signature]
REGIONAL ENGINEER

Jan 27 2017
Maurice M. Addis, P.E.
ENGINEER OF DESIGN AND ENVIRONMENT

Jan 27 2017
[Signature]
DIRECTOR OF PROGRAM DEVELOPMENT

PRINTED BY THE AUTHORITY
OF THE STATE OF ILLINOIS

INDEX OF SHEETS

- 1. COVER SHEET
- 2. INDEX, GENERAL NOTES, STANDARDS, & SIGNATURES
- 3. SUMMARY OF QUANTITIES
- 4.-8. SCHEDULE OF QUANTITIES
- 9.-15. BRIDGE LOCATION MAPS
- 16. BRIDGE DETAIL SHEET

HIGHWAY STANDARDS

- 000001-06
- 001006
- 701201-04
- 701400-09
- 701406-11
- 701411-09
- 701421-08
- 701501-06
- 701901-06

COMMITMENTS

COMMITMENTS ARE NOT TO BE ALTERED WITHOUT THE WRITTEN APPROVAL OF ALL PARTIES TO WHICH THE COMMITMENT WAS MADE.

- 1. THE RESIDENT ENGINEER SHALL CONTACT STUDIES AND PLANS CONCERNING ANY MAJOR PLAN CHANGE, TO MAKE SURE NO PREVIOUS COMMITMENTS (NOT LISTED) WERE MADE AFFECTING THE DESIGN AND ALLOW AN IMPROVED DESIGN FOR FUTURE PROJECTS.

GENERAL NOTES

THE CONCRETE SEALER SHALL BE APPLIED TO THE ENTIRE TOP SURFACE OF THE DECK, INCLUDING THE INSIDE FACES AND TOPS OF THE PARAPETS.

TO PREVENT THE DECK SURFACE TREATMENT FROM BEING APPLIED TO THE EXISTING PAVEMENT MARKINGS, THE EXISTING PAVEMENT MARKINGS SHALL BE TEMPORARILY COVERED PRIOR TO APPLICATION. THE TEMPORARY COVERING SHALL BE REMOVED AFTER APPLICATION OF THE DECK SURFACE TREATMENT AND PRIOR TO OPENING TO TRAFFIC. THE COST SHALL BE INCLUDED WITH BRIDGE DECK CONCRETE SEALER.

DISTRICT SIX	
EXAMINED	<i>November 10,</i> 20 <i>16</i>
	<i>John C. Wynn</i>
OPERATIONS ENGINEER	
EXAMINED	<i>October 31</i> 20 <i>16</i>
	<i>Ron Lechman</i>
PROJECT IMPLEMENTATION ENGINEER	
EXAMINED	<i>November 4</i> 20 <i>16</i>
	<i>John P. Meyer</i>
PROGRAM DEVELOPMENT ENGINEER	

FILE NAME =	USER NAME = pararava	DESIGNED -	REVISED -	STATE OF ILLINOIS DEPARTMENT OF TRANSPORTATION	INDEX OF SHEETS, GENERAL NOTES, AND COMMITMENTS			F.A. RTE.	SECTION	COUNTY	TOTAL SHEETS	SHEET NO.			
Default	Documents\DOT Offices\District 6\Projects\067	CHECKED -	REVISED -					VAR.		VARIOUS	16	2			
	PLOT SCALE * 1/8"=1'-0"	DATE -	REVISED -					SCALE:	SHEET	OF	SHEETS	STA.	TO STA.	ILLINOIS FED. AID PROJECT CONTRACT NO. 72J28	
	PLOT DATE * 11/16/2016							*06 BOGE DECK SEALING 2017							

00000000

CODE NO.	ITEM	UNIT	TOTAL QUANTITY	CONSTRUCTION CODE				
				CASS 100% STATE BRIDGE	MASON 100% STATE BRIDGE	MENARD 100% STATE BRIDGE	MORGAN 100% STATE BRIDGE	SCOTT 100% STATE BRIDGE
				0014	0014	0014	0014	0014
				6-00647-0400	6-00647-0400	6-00647-0400	6-00647-0400	6-00647-0400
67100100	MOBILIZATION	LSUM	1	0.2	0.2	0.2	0.2	0.2
70100310	TRAFFIC CONTROL AND PROTECTION, STANDARD 701421	LSUM	1				1	
70100420	TRAFFIC CONTROL AND PROTECTION, STANDARD 701411	EACH	10				10	
70100450	TRAFFIC CONTROL AND PROTECTION, STANDARD 701201	LSUM	1	0.2	0.2	0.2	0.2	0.2
70100700	TRAFFIC CONTROL AND PROTECTION, STANDARD 701406	LSUM	1				0.5	0.5
70102620	TRAFFIC CONTROL AND PROTECTION, STANDARD 701501	LSUM	1			0.33	0.34	0.33
X5870015	BRIDGE DECK CONCRETE SEALER	SQ FT	1036431.2	118493.9	25748.5	202690.9	466006	223491.9
X7010410	SPEED DISPLAY TRAILER	CAL MO	2				1	1

8

FILE NAME *	USER NAME = Yonahkifa	DESIGNED -	REVISED -	STATE OF ILLINOIS DEPARTMENT OF TRANSPORTATION	SUMMARY OF QUANTITIES	F.A. RTE.	SECTION	COUNTY	TOTAL SHEETS	SHEET NO.	
pw\11804EBIDINTEG\Illinois.gov\PWIDD\Documents\DOT Office\District 6\Projects\0672J28\0672J28-ent-500.dwg	PROJECT = 0672J28-ent-500.dwg	CHECKED -	REVISED -			VAR.	*	VARIOUS	16	3	
PLOT SCALE * 1/8" = 1' / in.	DATE -	REVISED -	SCALE:			SHEET OF	SHEETS	STA. TO STA.	CONTRACT NO. 72J28		
PLOT DATE * 11/30/2016	DATE -	REVISED -	ILLINOIS FED. AID PROJECT								

* D6 BDGE DECK SEALING 2017

SN.	County	Facility Carried	Feature Crossed	Location	Deck Length (FT)	Deck Width (FT)	Parapet (FT)	Parapet (FT)	Deck Area (SQ FT)	TC & P
009-0002	Cass	IL 125	BNSF RR	1M E US67-BEARDSTOWN	486.6	39.2	3.77	3.77	19074.72	701201
009-0009	Cass	IL 78	JOBS CREEK	3.9M N IL 125	43.0	59.0	3.77	3.77	2537	701201
009-0012	Cass	US 67 / ILL 100	INDIAN CREEK	6M S IL 125	292.0	35.2	3.77	3.77	10278.4	701201
009-0013	Cass	IL 78	LITTLE JOBS CREEK	4.3M N IL 125	105.0	35.2	3.77	3.77	3696	701201
009-0503	Cass	IL 125	LOST CREEK	BLUFF SPRG/5M E US67	160.6	42.7	3.77	3.77	6857.62	701201
009-0510	Cass	IL 78	SANGAMON RIVER	.5 N CHANDLERVILLE	1820.0	39.1	3.77	3.77	71162	701201
009-0512	Cass	IL 78	PANTHER CREEK	SW Chandlerville CL	124.7	39.2	3.77	3.77	4888.24	701201
Total=									118493.98	

SN.	County	Facility Carried	Feature Crossed	Location	Deck Length (FT)	Deck Width (FT)	Parapet (FT)	Parapet (FT)	Deck Area (SQ FT)	TC & P
063-0005	Mason	IL 10	CRANE CREEK	1.5 MI N EASTON	50.8	46.5	3.77	3.77	2362.2	701201
063-0006	Mason	OLD US 136	COUNTY DITCH	S US136, 1.2M E IL10	30.3	42.2	3.77	3.77	1278.66	701201
063-0009	Mason	ILL 97	PECAN RUN CREEK	1.2MI SO KILBOURNE	260.0	35.2	3.77	3.77	9152	701201
063-0500	Mason	IL 78	WOLF LAKE	1.5 M N CHANDLERVILLE	330.5	39.2	3.77	3.77	12955.6	701201
Total=									25748.46	

FILE NAME =	USER NAME = Verenskif	DESIGNED -	REVISED -	STATE OF ILLINOIS DEPARTMENT OF TRANSPORTATION	SCHEDULE OF QUANTITIES				F.A. RTE.	SECTION	COUNTY	TOTAL SHEETS	SHEET NO.
pw\ill084EBIDINTEG.illinois.gov\PIWIDOT\Documents\DOT Offices\District 6\Projects\067228\Drawings\EA0\Drawings\067228-sht-sched		DRAWN -	REVISED -						VAR	•	VARIOUS	16	5
Default	PLOT SCALE = 100.0000' / in.	CHECKED -	REVISED -			SCALE:	SHEET	OF	SHEETS	STA.	TO	STA.	ILLINOIS FED. AID PROJECT
	PLOT DATE = 11/30/2016	DATE -	REVISED -										CONTRACT NO. 72J28

SN.	County	Facility Carried	Feature Crossed	Location	Deck Length (FT)	Deck Width (FT)	Parapet (FT)	Parapet (FT)	Deck Area (SQ FT)	TC & P
065-0002	Menard	ILL 97	SANGAMON RIVER	MASON MENARD CO LINE	729.0	35.2	3.77	3.77	25660.8	701201
065-0003	Menard	ILL 97	SANGAMON R OVERFLOW	.5 MI SE SANGAMON R.	797.0	35.2	3.77	3.77	28054.4	701201
065-0004	Menard	ILL 97	TAR CREEK	.5 MI N OAKFORD	146.6	35.2	3.77	3.77	5160.32	701201
065-0005	Menard	ILL 97	C&IM RR	.5 MI N PETERSBURG	277.7	35.2	3.77	3.77	9775.04	701201
065-0016	Menard	ILL 123	SANGAMON RIVER	.2MI E PETERSBURG	921.3	44.8	3.77	3.77	41274.24	701501
065-0017	Menard	ILL 97	ROCK CREEK	3.5M N SALISBURY	96.7	35.2	3.77	3.77	3403.84	701201
065-0018	Menard	ILL 123	INDIAN CREEK	2.5MI E PETERSBURG	80.0	35.2	3.77	3.77	2816	701201
065-0019	Menard	ATHENS RD.	SANGAMON RIVER	JCT IL97 & ATHENS RD	1117	35.2	3.77	3.77	39318.4	701501
065-0501	Menard	IL 29	SALT CREEK	MASON MENARD CO LINE	1341.7	35.2	3.77	3.77	47227.84	701201
Total=									202690.88	

FILE NAME =	USER NAME = Verenskifa	DESIGNED -	REVISED -	STATE OF ILLINOIS DEPARTMENT OF TRANSPORTATION	SCHEDULE OF QUANTITIES				F.A. RTE.	SECTION	COUNTY	TOTAL SHEETS	SHEET NO.
pw\11084EBIDINTEG.illinois.gov\PIWIDOT\Documents\DOT Offices\District 6\Projects\067228\Drawings\067228-sht-sched		CHECKED -	REVISED -		SCALE:	SHEET	OF	SHEETS	STA.	TO STA.	ILLINOIS	FED. AID PROJECT	
Default	PLOT SCALE = 100.0000' / 1in.	DATE -	REVISED -								CONTRACT NO.	72J28	6
	PLOT DATE = 11/30/2016	DATE -	REVISED -										

SN.	County	Facility Carried	Feature Crossed	Location	Deck Length (FT)	Deck Width (FT)	Parapet (FT)	Parapet (FT)	Deck Area (SQ FT)	TC & P
069-0004	Morgan	IL 78	SNAKE CREEK	3.6M N WALNUT-J VILL	43.3	46.3	3.77	3.77	2004.79	701201
069-0009	Morgan	BUS I72/IL104/MORTON	MAUVAISE TERRE CREEK	.7M E IL267-JACKSNVL	130.0	63.7	3.77	3.77	8281	701421
069-0019	Morgan	IL 104	NORFOLK SOUTHERN RY.	.5M S IL 78,JACKSVL	144.0	38.7	3.77	3.77	5572.8	701201
069-0020	Morgan	ILL 104	MAUVAISE TERRE BR	1MI S BUS I72/IL104	32.0	43.0	3.77	3.77	1376	701201
069-0022	Morgan	IL 104	WOODS CREEK	2.98M W IL 111	44.6	33.0	3.77	3.77	1471.8	701201
069-0024	Morgan	IL 267	US 67/GWRR	.3M S JCT US 67	283.0	39.2	3.77	3.77	11093.6	701201
069-0025	Morgan	IL 267	GATEWAY WESTERN RR	.7M S JCT US 67	162.0	39.2	3.77	3.77	6350.4	701201
069-0034	Morgan	IL 267/US 67/BL 67	I-72/US 36	2.5M S IL104-JACKSVL	252.0	68.0	3.77	3.77	17136	701201
069-0035	Morgan	FAI 72 EB	ICG RR	0.5 M E US67/IL267	151.3	42.0	3.77	3.77	6354.6	701411 (1)
069-0036	Morgan	FAI 72 WB	ICG RR	0.5M E US67/IL267	151.3	42.0	3.77	3.77	6354.6	701406
069-0038	Morgan	FAI 72 EB	S FK MAUVAISE TERRE	1.6MI SW I72/OLD36	167.8	42.0	3.77	3.77	7047.6	701406
069-0039	Morgan	FAI 72 WB	S FK MAUVAISE TERRE	1.6MI SW I72/OLD36	167.8	42.0	3.77	3.77	7047.6	701406
069-0040	Morgan	FAI 72 EB	ILL 104 & B&N RR	1.1MI SW I72/OLD36	268.3	42.0	3.77	3.77	11268.6	701406
069-0041	Morgan	FAI 72 WB	ILL 104 & B&N RR	1.1MI SW I72/OLD36	268.3	42.0	3.77	3.77	11268.6	701406
069-0042	Morgan	FAI 72 EB	MAUVAISE TERRE CR	0.8MI SW I72/BUS I72	252.0	42.0	3.77	3.77	10584	701406
069-0043	Morgan	FAI 72 WB	MAUVAISE TERRE CR	0.8MI SW I72/BUS I72	252.0	42.0	3.77	3.77	10584	701406
069-0044	Morgan	BUS I72/OLD US 36	FAI 72	I72/BUS I72 INT #68	325.7	92.0	3.77	3.77	29964.4	701421
069-0048	Morgan	FAI 72 EB	N FK MAUVAISE TERRE	1.1MI E I72/BUS I72	239.5	42.0	3.77	3.77	10059	701406
069-0049	Morgan	FAI 72 WB	N FK MAUVAISE TERRE	1.1MI E I72/BUS I72	239.5	42.0	3.77	3.77	10059	701406
069-0052	Morgan	FAS 614	FAI 72	I-72 INT @ ALEXANDER	252.0	68.0	3.77	3.77	17136	701201
069-0055	Morgan	FAI 72 WB	US 67	2.75 MI W ILL 267	286.8	53.6	3.77	3.77	15372.48	701406 & 701411 (2)
069-0056	Morgan	FAI 72 EB	US 67	2.75 MI W ILL 267	240.0	53.5	3.77	3.77	12840	701406 & 701411 (2)
069-0057	Morgan	FAI 72/US 36/US67 WB	MASSEY LANE TR 128	2.25 MI W IL 267	118.0	41.9	3.77	3.77	4944.2	701406
069-0058	Morgan	FAI 72/US 36/US67 EB	MASSEY LANE TR 128	2.25 MI W IL 267	144.0	41.9	3.77	3.77	6033.6	701406
069-0059	Morgan	FAI 72 WB	SPRING CREEK	.25MW SANG CO LINE	138.0	42.0	3.77	3.77	5796	701406
069-0060	Morgan	FAI 72 EB	SPRING CREEK	.25MW SANG CO LINE	138.0	42.0	3.77	3.77	5796	701406
069-0062	Morgan	ILL 100	SPRING RUN	1.7MI S JCT 104	96.0	35.2	3.77	3.77	3379.2	701201
069-0065	Morgan	US 67 & ILL 100	WILLOW CREEK	1.2MI N JCT IL 104	103.0	34.8	3.77	3.77	3584.4	701201
069-0072	Morgan	TR 96	US 67/IL 104	5.2MN US67/I72/US36	237.2	30.8	3.77	3.77	7305.76	701201
069-0073	Morgan	US 67 SB	IL104EB & 104WB RAMP	4.7M N US67/I72/US36	187.0	49.9	3.77	3.77	9331.3	701406 & 701411 (2)
069-0074	Morgan	US 67 NB	IL104EB & 104WB RAMP	4.7M N US67/I72/US36	187.0	49.9	3.77	3.77	9331.3	701406 & 701411 (2)
069-0075	Morgan	US 67 SB	NORFOLK SOUTHERN RR	4.5M N US67/I72/US36	162.1	42.7	3.77	3.77	6921.67	701406
069-0076	Morgan	US 67 NB	NORFOLK SOUTHERN RR	4.5M N US67/I72/US36	162.1	44.4	3.77	3.77	7197.24	701406 & 701411 (1)
069-0078	Morgan	BUS I 72/MORTON AVE	US 67	2.6M N US67/I72/US36	247.7	68.6	3.77	3.77	16992.22	701201
069-0079	Morgan	TR 187	US 67	1.4M N US67/I72/US36	240.8	30.8	3.77	3.77	7416.64	701201
069-0501	Morgan	OLD US 36/MORTON AV.	BN RR	1.7M W I-72/US 36	345.5	78.1	3.77	3.77	26983.55	701602
069-0502	Morgan	ILL 78	LITTLE INDIAN CR	0.2 S CASS CO LINE	98.4	34.8	3.77	3.77	3424.32	701201
069-0503	Morgan	IL 78	FORK INDIAN CREEK	2.8 MI S CASS CO LIN	61.6	34.8	3.77	3.77	2143.68	701201
069-0504	Morgan	IL 267	SANDY CREEK	.6M S I72/US36 INT	112.0	43.2	3.77	3.77	4838.4	701201
069-0505	Morgan	US 67 SB	SANDY CREEK	0.50 MI S I 72/US 36	206.7	43.2	3.77	3.77	8929.44	701406
069-0506	Morgan	US 67 NB	SANDY CREEK	0.50 MI S I 72/US 36	206.7	43.2	3.77	3.77	8929.44	701406
069-0507	Morgan	US 67 SB	BRUSHY FORK CREEK	2.25 MI S I 72/US 36	157.5	43.2	3.77	3.77	6804	701406
069-0508	Morgan	US 67 NB	BRUSHY FORK CREEK	2.25 MI S I 72/US 36	157.5	43.2	3.77	3.77	6804	701406
069-0509	Morgan	US 67 SB	SPOON CREEK	3.8 MI S I 72/US 36	245.0	43.2	3.77	3.77	10584	701406
069-0510	Morgan	US 67 NB	SPOON CREEK	3.8 MI S I 72/US 36	245.0	43.2	3.77	3.77	10584	701406
069-0511	Morgan	US 67 NB	MAUVAISE CR	2.5M E CHAPIN	351.0	43.2	3.77	3.77	15163.2	701406
069-0512	Morgan	US 67 SB	MAUVAISE TERRE	2.5M E CHAPIN	351.0	43.2	3.77	3.77	15163.2	701406
069-0513	Morgan	FAS 579/CH 7	US 67/IL 104	1.2 mi E of Chapin	202.0	69.2	3.77	3.77	13978.4	701201
069-0520	Morgan	IL 78	INDIAN CREEK	3.7 MI S CASS COUNTY	321.7	39.2	3.77	3.77	12610.64	701201
069-0521	Morgan	MOUND ROAD	IL 104	.3M N MORTON-JACKSVL	146.7	39.6	3.77	3.77	5809.32	701501
Total=									466005.99	

* () - INDICATES THE NUMBER OF LOCATIONS

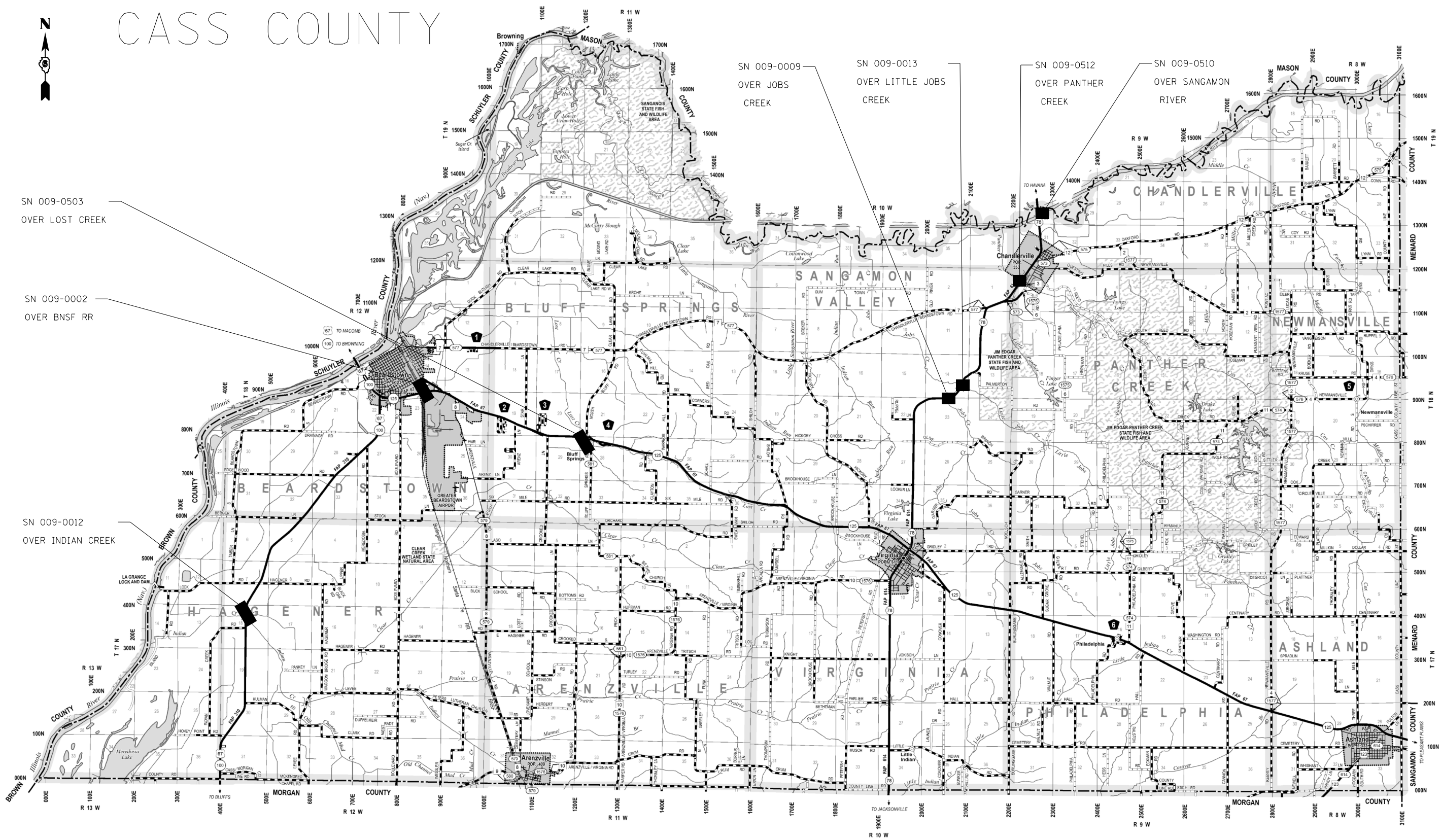
FILE NAME =	USER NAME = Verenskif	DESIGNED -	REVISED -	STATE OF ILLINOIS DEPARTMENT OF TRANSPORTATION	SCHEDULE OF QUANTITIES				F.A. RTE.	SECTION	COUNTY	TOTAL SHEETS	SHEET NO.
pw\IL084EBIDINTEG.illinois.gov\PIWIDOT\Documents\DOT Offices\District 6\Projects\0672\Drawings\EA0\Sheets\0672J28-sht-sched		DRAWN -	REVISED -		SCALE:	SHEET	OF	SHEETS	STA.	TO STA.	ILLINOIS	FED. AID PROJECT	
Default		CHECKED -	REVISED -								VARIOUS	16	7
		DATE -	REVISED -								CONTRACT NO.	72J28	

SN.	County	Facility Carried	Feature Crossed	Location	Deck Length (FT)	Deck Width (FT)	Parapet (FT)	Parapet (FT)	Deck Area (SQ FT)	TC & P
086-0002	Scott	ILL 106	BLUFF CREEK	2 MI W WINCHESTER	86.3	36.3	3.77	3.77	3132.69	701201
086-0003	Scott	ILL 106	SUGAR CREEK	W EDGE WINCHESTER	33.8	36.3	3.77	3.77	1226.94	701201
086-0006	Scott	ILL 100	WOLF RUN CREEK	AT BLUFFS	102.7	37.6	3.77	3.77	3861.52	701501
086-0013	Scott	ILL 106	LITTLE SANDY CREEK	1.5 MI N ALSEY	79.2	35.2	3.77	3.77	2787.84	701201
086-0016	Scott	HILLVIEW RD	SANDY CREEK	5 MI S IL 106/OLD 36	401.7	32.0	3.77	3.77	12854.4	701201
086-0019	Scott	HILLVIEW ROAD	LITTLE SANDY CREEK	5.5MI S IL106/OLD 36	255.9	32.8	3.77	3.77	8393.52	701201
086-0023	Scott	FAI 72 EB	WALNUT CREEK	1.2 M W CO LINE	110.0	42.0	3.77	3.77	4620	701406
086-0024	Scott	FAI 72 WB	WALNUT CREEK	1.2 M W CO LINE	110.0	42.0	3.77	3.77	4620	701406
086-0025	Scott	FAI 72 EB	B&N RAILROAD (GONE)	0.3MI E EXIT 52	158.6	42.0	3.77	3.77	6661.2	701406
086-0026	Scott	FAI 72 WB	B&N RAILROAD (GONE)	0.3MI E EXIT 52	158.6	42.0	3.77	3.77	6661.2	701406
086-0027	Scott	OLD US 36	FAI 72	WINCHESTER EXIT*52	259.0	68.0	3.77	3.77	17612	701201
086-0031	Scott	I-72/US 36(EB)	PLUM CREEK	2.6M E IL 100 INTCHG	374.5	42.0	3.77	3.77	15729	701406
086-0032	Scott	I-72/US 36(WB)	PLUM CREEK	2.6M E IL 100 INTCHG	374.5	42.0	3.77	3.77	15729	701406
086-0037	Scott	FAI 72 EB	ILL 100	I-72 & IL 100 INT	174.3	42.0	3.77	3.77	7320.6	701406
086-0038	Scott	FAI 72 WB	ILL 100	I-72 & IL100 INT	174.3	42.0	3.77	3.77	7320.6	701406
086-0039	Scott	ILL 100	WALNUT CREEK	1.5MI N JCTILL100&106	236.0	35.2	3.77	3.77	8307.2	701201
086-0040	Scott	FAI 72 EB	TR 55	2.9MI W IL 100 INT	105.0	43.2	3.77	3.77	4536	701406
086-0041	Scott	FAI 72 WB	TR 55	2.9MI W IL 100 INT	105.0	43.2	3.77	3.77	4536	701406
086-0042	Scott	FAI 72 EB	DRAINAGE DITCH	2.6MI W IL 100 INT	248.9	43.0	3.77	3.77	10702.7	701406
086-0043	Scott	FAI 72 WB	DRAINAGE DITCH	2.6MI W IL 100 INT	248.9	43.2	3.77	3.77	10752.48	701406
086-0045	Scott	ILL 106	SANDY CREEK	.5 MI E WINCHESTER	151.0	35.2	3.77	3.77	5315.2	701201
086-0046	Scott	ILL 100	EAGLE RUN CREEK	1.5 MI N BLUFFS	93.0	35.2	3.77	3.77	3273.6	701201
086-0500	Scott	IL 100	MAUVAISE TERRE CR	1.9M N I-72/S BLUFFS	294.9	34.8	3.77	3.77	10262.52	701201
086-0501	Scott	ILL 106	TRIB LITTLE SANDY CR	1.5 MI S ALSEY	81.7	34.8	3.77	3.77	2843.16	701201
086-0502	Scott	ILL 106	LITTLE SANDY CREEK	2.0 MI S ALSEY	87.6	34.8	3.77	3.77	3048.48	701201
086-0503	Scott	US 67 SB	GATEWAY WESTERN RR	IN MANCHESTER	415.4	43.2	3.77	3.77	17945.28	701406
086-0504	Scott	US 67 NB	GATEWAY WESTERN RR	IN MANCHESTER	415.4	43.2	3.77	3.77	17945.28	701406
086-0505	Scott	IL 106	SANDY CREEK	2 M SE WINCHESTER	140.5	39.1	3.77	3.77	5493.55	701201
Total=									223491.96	

FILE NAME =	USER NAME = Verenskif	DESIGNED -	REVISED -	STATE OF ILLINOIS DEPARTMENT OF TRANSPORTATION	SCHEDULE OF QUANTITIES				F.A. RTE.	SECTION	COUNTY	TOTAL SHEETS	SHEET NO.	
Default		CHECKED -	REVISED -		SCALE:	SHEET	OF	SHEETS	STA.	TO	STA.	VARIOUS	16	8
		DATE -	REVISED -									CONTRACT NO.	72J28	
												ILLINOIS FED. AID PROJECT		



CASS COUNTY



FILE NAME =	USER NAME = Verenskif	DESIGNED -	REVISED -
pw\1\084EBID\INTEG\illinois.gov\PIWID\Documents\DOT Offices\District 6\Projects\0672\Drawings\60\Sheets\0672J28-sht-plans		CHECKED -	REVISED -
Default		DATE -	REVISED -

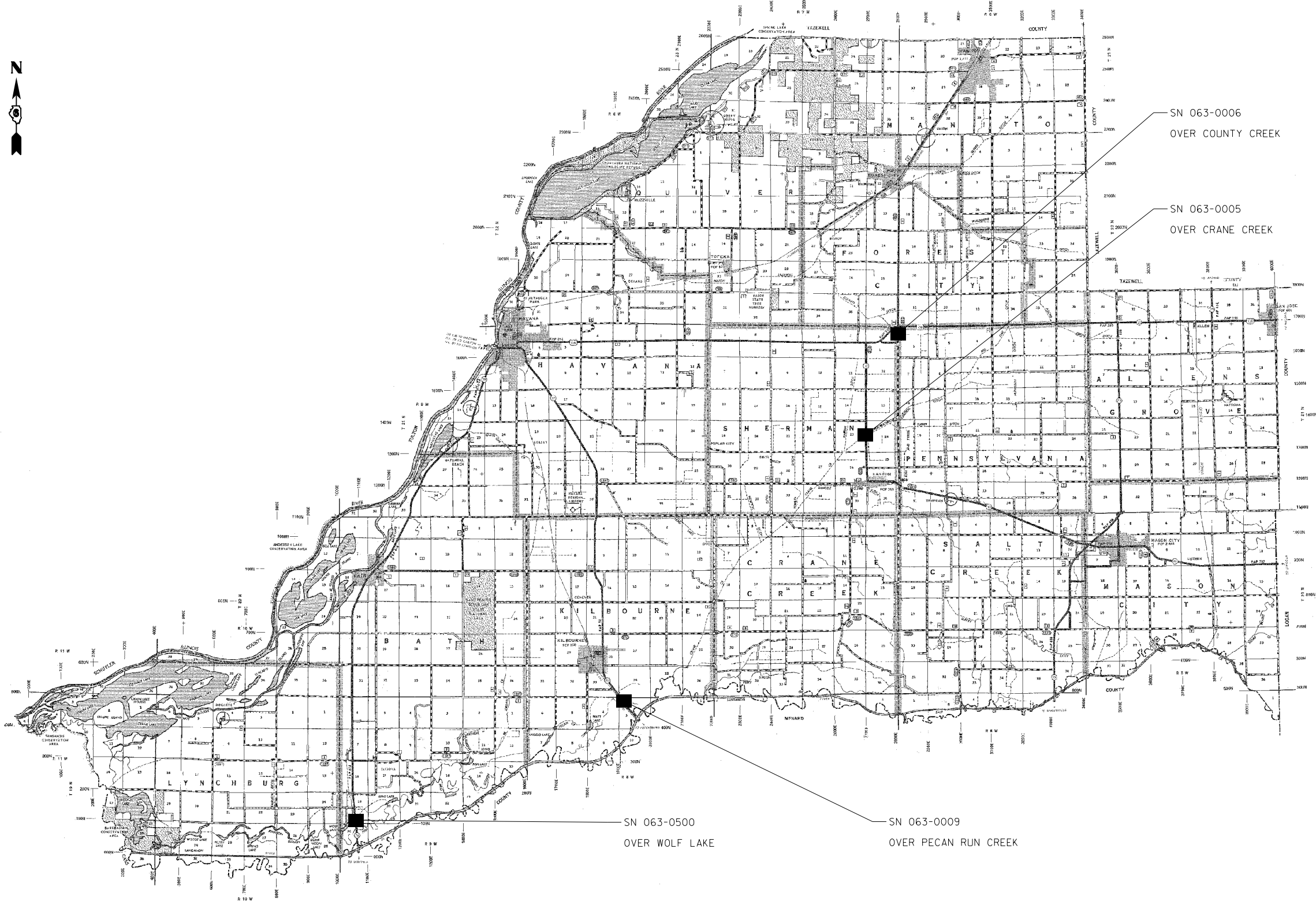
**STATE OF ILLINOIS
DEPARTMENT OF TRANSPORTATION**

BRIDGE LOCATION MAP

SCALE: SHEET OF SHEETS STA. TO STA.

F.A. RTE.	SECTION	COUNTY	TOTAL SHEETS	SHEET NO.
VARS	.	VARIOUS	16	9
			CONTRACT NO. 72J28	
ILLINOIS FED. AID PROJECT				

MASON COUNTY



FILE NAME =	USER NAME = Verenskif	DESIGNED -	REVISED -
pw\1\084EBID\INTEG.illinois.gov\PIWID\Documents\DOT Offices\District 6\Projects\0672\Drawings\0672\0672J28-sht-plans		DRAWN -	REVISED -
Default	PLOT SCALE = 40.0000' / in.	CHECKED -	REVISED -
	DATE = 11/30/2016	DATE -	REVISED -

**STATE OF ILLINOIS
DEPARTMENT OF TRANSPORTATION**

BRIDGE LOCATION MAP

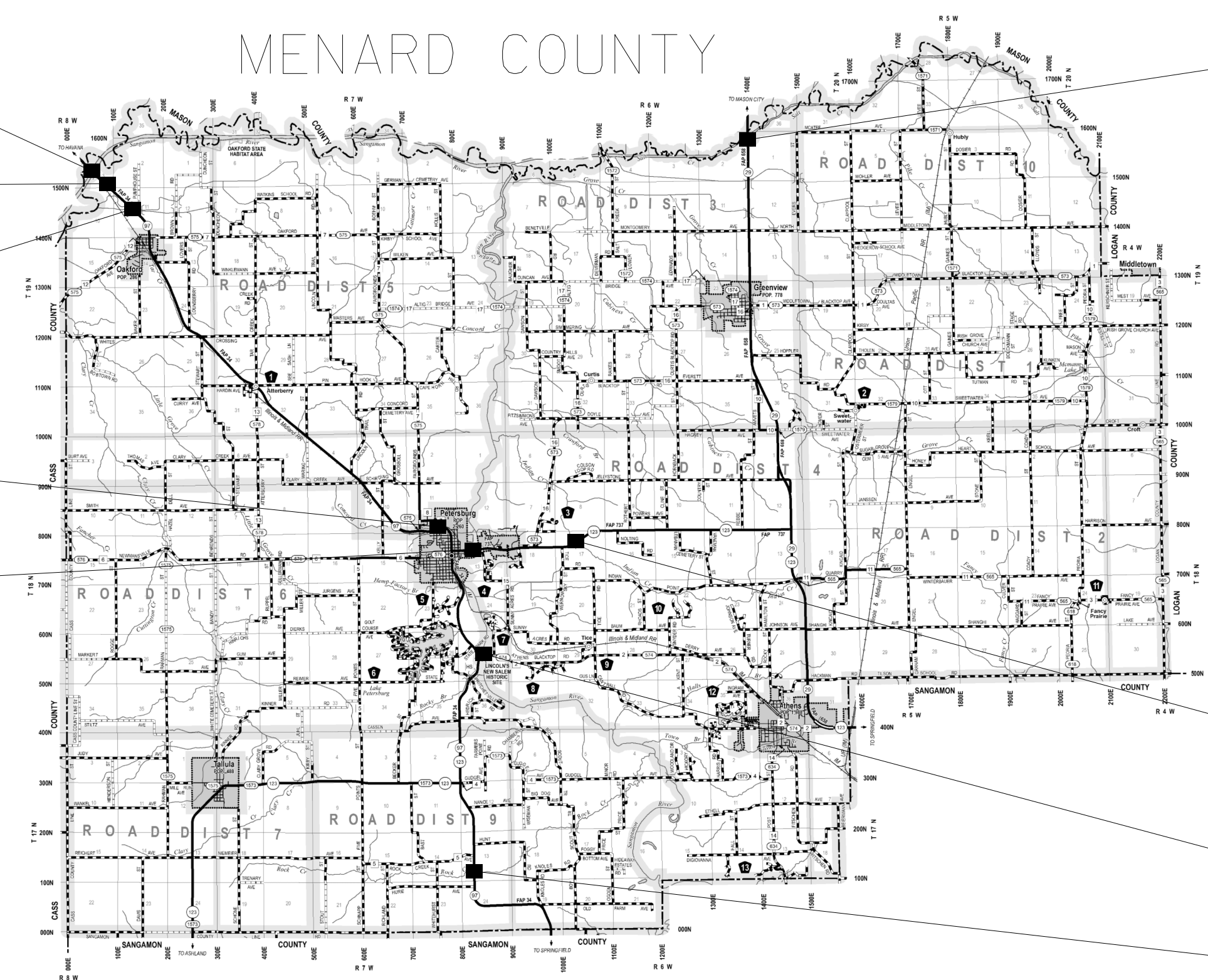
SCALE: SHEET OF SHEETS STA. TO STA.

F.A. RTE.	SECTION	COUNTY	TOTAL SHEETS	SHEET NO.
VARS	*	VARIOUS	16	10
			CONTRACT NO. 72J28	
ILLINOIS FED. AID PROJECT				

MENARD COUNTY

- SN 065-0002
OVER SANGAMON RIVER
- SN 065-0003
OVER SANGAMON RIVER
OVERFLOW
- SN 065-0004
OVER TAR CREEK
- SN 065-0005
OVER C & IM RR
- SN 065-0016
OVER SANGAMON RIVER

- SN 065-0501
OVER SALT CREEK
- SN 065-0018
OVER INDIAN CREEK
- SN 065-0019
OVER SANGAMON RIVER
- SN 065-0017
OVER ROCK CREEK



FILE NAME =	USER NAME = Verenskif	DESIGNED -	REVISED -	STATE OF ILLINOIS DEPARTMENT OF TRANSPORTATION	BRIDGE LOCATION MAP				F.A. RTE.	SECTION	COUNTY	TOTAL SHEETS	SHEET NO.	
Default		CHECKED -	REVISED -		SCALE:	SHEET	OF	SHEETS	STA.	TO	STA.	VARIOUS	16	11
		DATE -	REVISED -		ILLINOIS FED. AID PROJECT									
					CONTRACT NO. 72J28									

SN 069-0065
OVER WILLOW CREEK

SN 069-0062
OVER SPRING RUN

SN 069-0513
OVER US 67 / IL 104

SN 069-0511 (NB)
SN 069-0512 (SB)
OVER MAUVAISE TERRE CREEK

SN 069-0072
OVER US 67/ IL 104

SN 069-0073 (SB)
SN 069-0074 (NB)
IL 104 EB & 104 WB RAMP

SN 069-0056 (EB)
SN 069-0055 (WB)
OVER US 67

SN 069-0505 (SB)
SN 069-0506 (NB)
OVER SANDY CREEK

SN 069-0507 (SB)
SN 069-0508 (NB)
OVER BRUSHY FORK CREEK

SN 069-0509 (SB)
SN 069-0510 (NB)
OVER SPOON CREEK

SN 069-0502
OVER LITTLE INDIAN CREEK

SN 069-0503
OVER FORK INDIAN CREEK

SN 069-0520
OVER INDIAN CREEK

SN 069-0052
OVER FAI 72

SN 069-0060 (EB)
SN 069-0059 (WB)
OVER SPRING CREEK

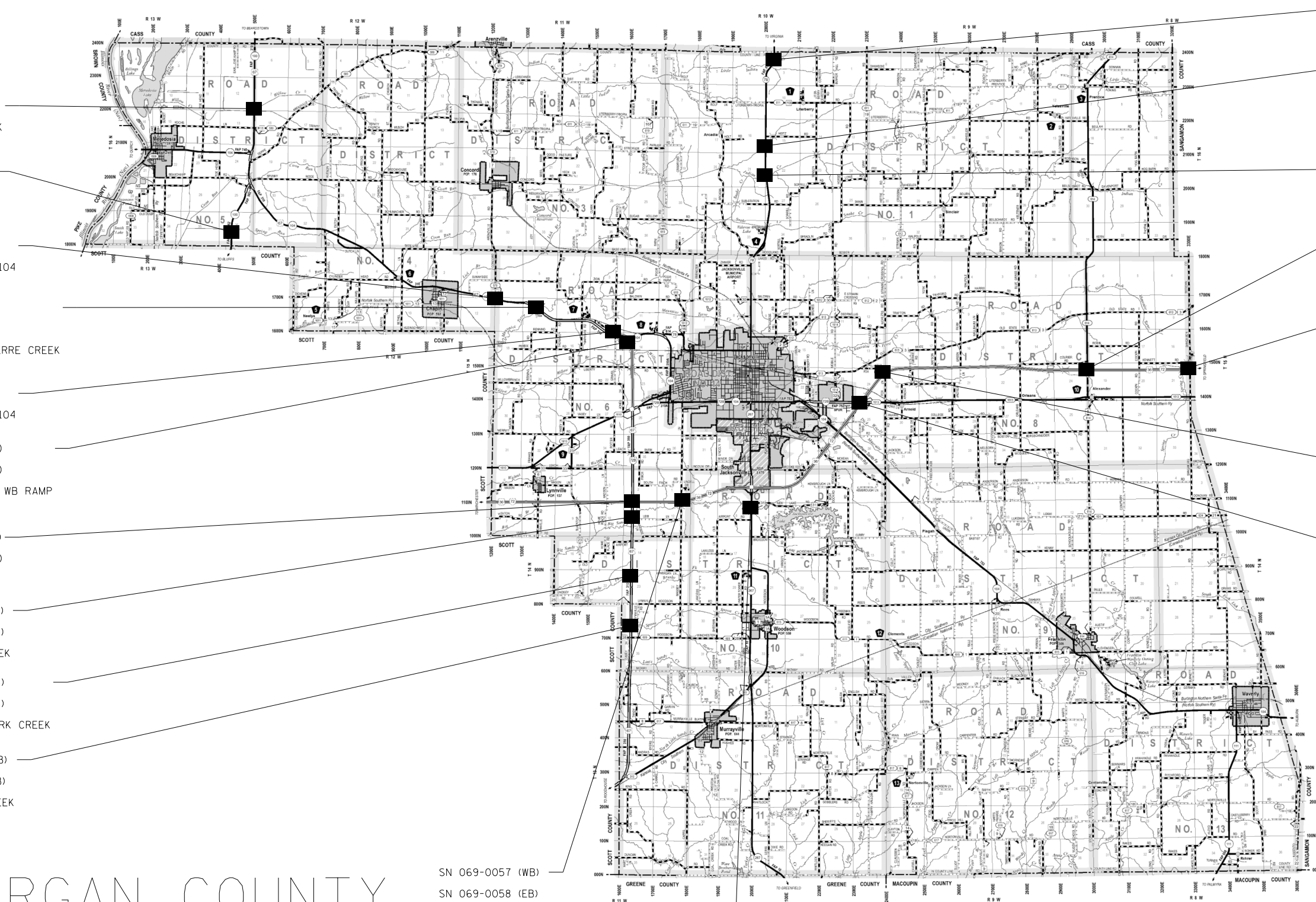
SN 069-0048 (EB)
SN 069-0049 (WB)
OVER N. FORK MAUVAISE TERRE

SN 069-0044
OVER FAI 72

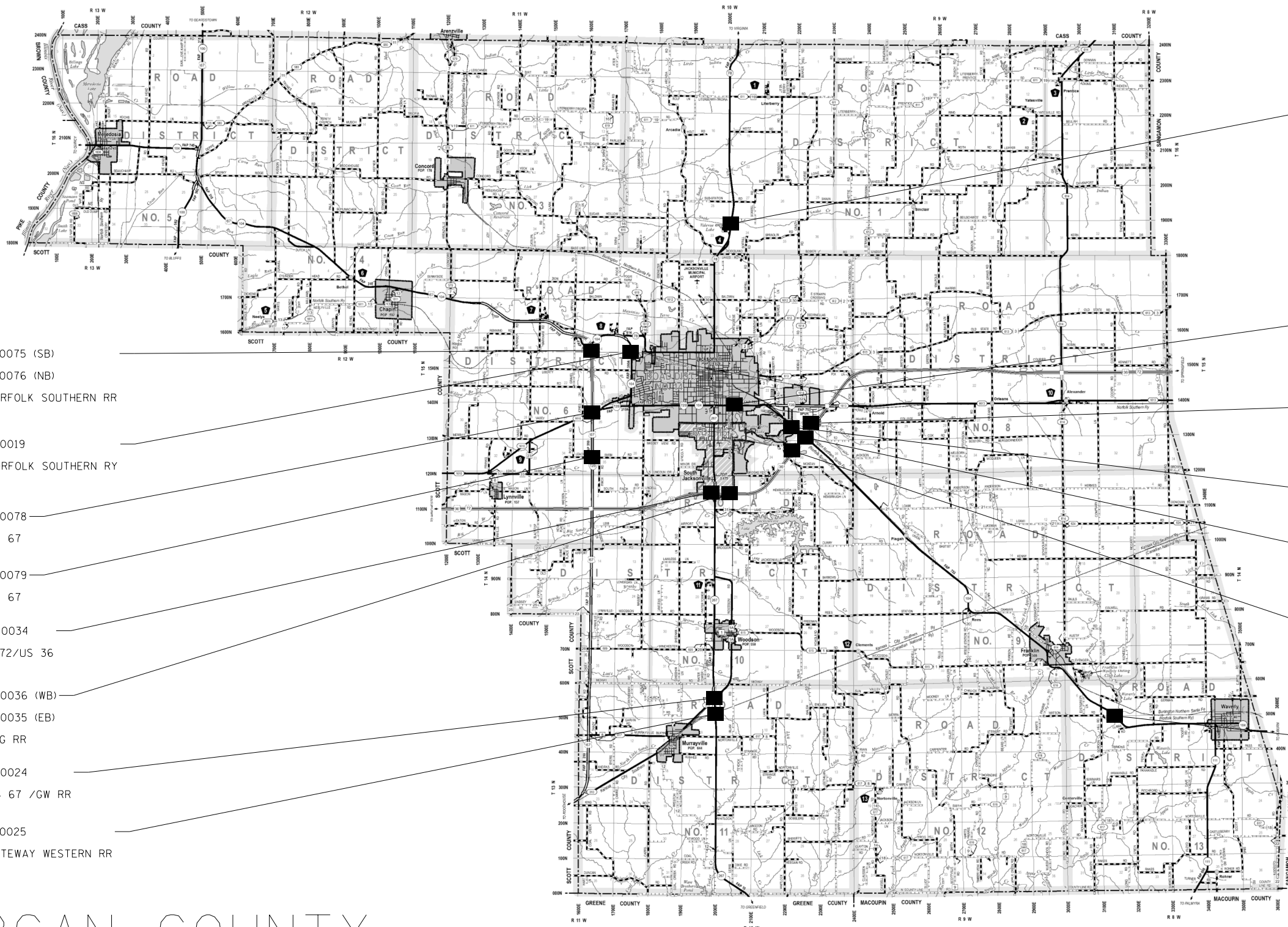
MORGAN COUNTY

SN 069-0057 (WB)
SN 069-0058 (EB)
OVER MASSEY LANE
TR 128

SN 069-0504
OVER SANDY CREEK



FILE NAME =	USER NAME = Verenskif	DESIGNED -	REVISED -	STATE OF ILLINOIS DEPARTMENT OF TRANSPORTATION	BRIDGE LOCATION MAP				F.A. RTE.	SECTION	COUNTY	TOTAL SHEETS	SHEET NO.	
Default		CHECKED -	REVISED -		SCALE:	SHEET	OF	SHEETS	STA.	TO	STA.	VARIOUS	16	12
		DATE -	REVISED -		ILLINOIS FED. AID PROJECT									
					D6 BRIDGE DECK SEALING 2017									



SN 069-0075 (SB)
 SN 069-0076 (NB)
 OVER NORFOLK SOUTHERN RR

SN 069-0019
 OVER NORFOLK SOUTHERN RY

SN 069-0078
 OVER US 67

SN 069-0079
 OVER US 67

SN 069-0034
 OVER I-72/US 36

SN 069-0036 (WB)
 SN 069-0035 (EB)
 OVER ICG RR

SN 069-0024
 OVER US 67 /GW RR

SN 069-0025
 OVER GATEWAY WESTERN RR

SN 069-0004
 OVER SNAKE CREEK

SN 069-0009
 OVER MAUVAISE TERRE
 CREEK

SN 069-0042 (EB)
 SN 069-0043 (WB)
 OVER MAUVAISE TERRE CREEK

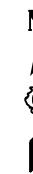
SN 069-0020
 OVER MAUVAISE TERRE BR

SN 069-0040 (EB)
 SN 069-0041 (WB)
 OVER IL 104 & B&N RR

SN 069-0039 (WB)
 SN 069-0038 (EB)
 OVER S. FORK
 MAUVAISE TERRE

SN 069-0022
 OVER WOOD CREEK

MORGAN COUNTY



FILE NAME =	USER NAME = Verenskifa	DESIGNED -	REVISED -
Default		CHECKED -	REVISED -
	PLOT DATE = 11/30/2016	DATE -	REVISED -

**STATE OF ILLINOIS
 DEPARTMENT OF TRANSPORTATION**

BRIDGE LOCATION MAP

SCALE: SHEET OF SHEETS STA. TO STA.

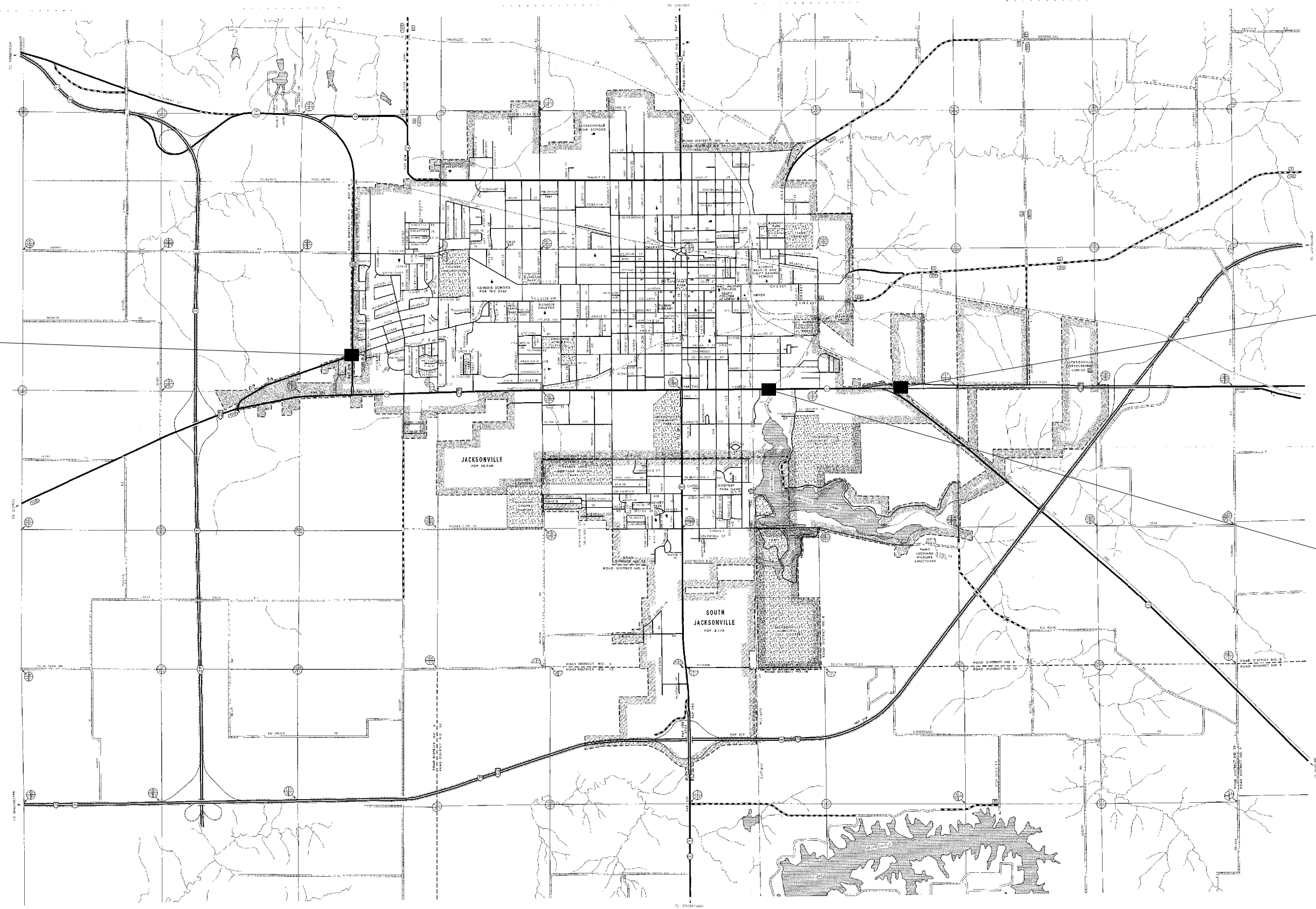
F.A. RTE.	SECTION	COUNTY	TOTAL SHEETS	SHEET NO.
VAR	•	VARIOUS	16	13
			CONTRACT NO. 72J28	
ILLINOIS FED. AID PROJECT				

MORGAN COUNTY -- JACKSONVILLE

SN 069-0521
OVER MOUND ROAD

SN 069-0501
OVER BN RR

SN 069-0009
OVER MAUVAISE
TERRE CREEK



FILE NAME =	USER NAME = Verenskif	DESIGNED -	REVISED -
pw\11\084EBIDINTEG\illinois.gov\PIWIDOT\Documents\DOT Offices\District 6\Projects\D67228\Drawings\60sheets\D67228-sht-plan.dwg		DRAWN -	REVISED -
Default	PLOT SCALE = 40.0000' / in.	CHECKED -	REVISED -
	PLOT DATE = 11/30/2016	DATE -	REVISED -

**STATE OF ILLINOIS
DEPARTMENT OF TRANSPORTATION**

BRIDGE LOCATION MAP

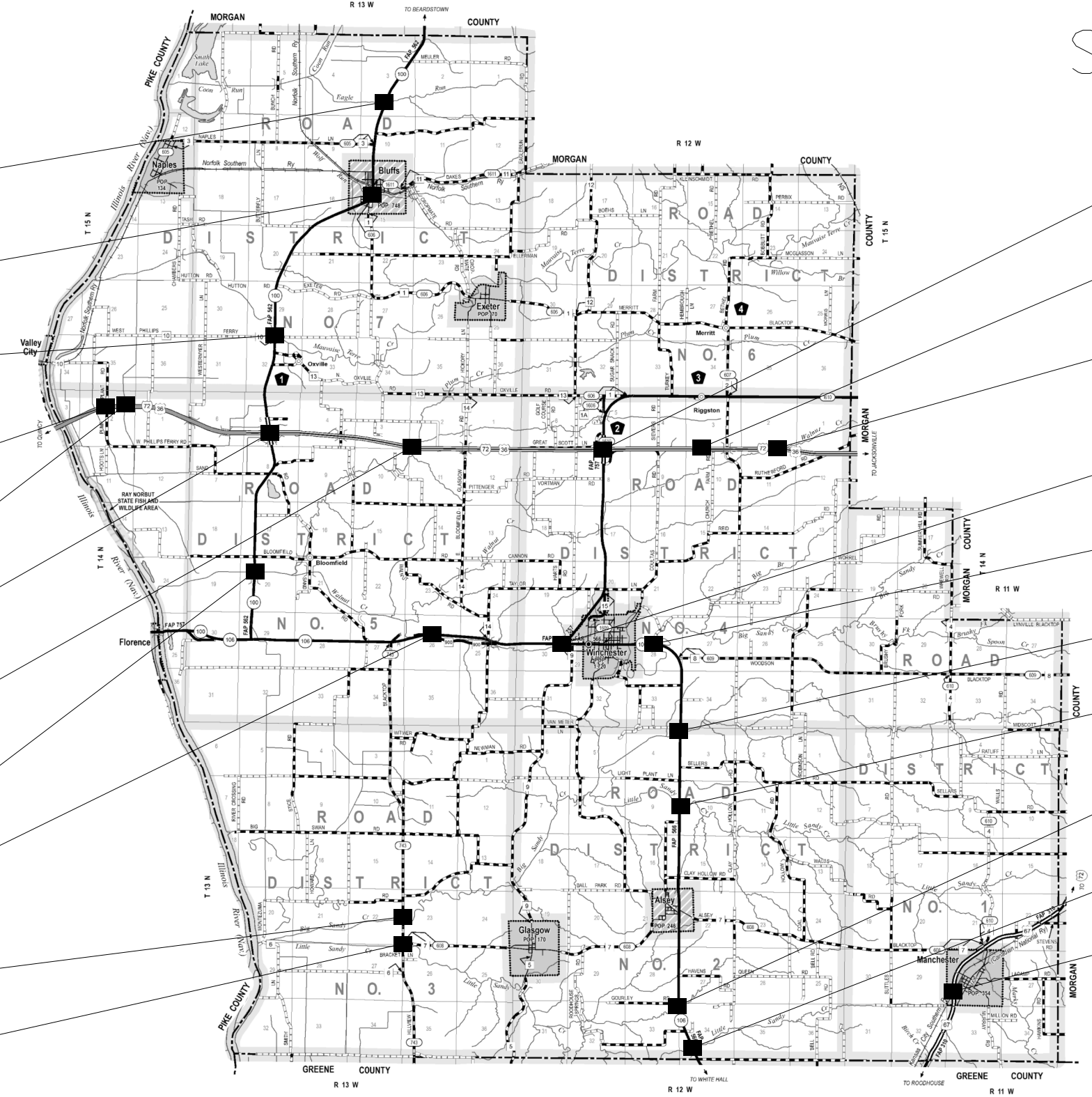
SCALE: SHEET OF SHEETS STA. TO STA.

F.A. RTE.	SECTION	COUNTY	TOTAL SHEETS	SHEET NO.
VAR5	•	VARIOUS	16	14
CONTRACT NO. 72J28			ILLINOIS FED. AID PROJECT	

D6 BRIDGE DECK SEALING 2017

SCOTT COUNTY

- SN 086-0046
OVER EAGLE RUN CREEK
- SN 086-0006
OVER WOLF RUN CREEK
- SN 086-0500
OVER MAUVAISE TERRE CREEK
- SN 086-0040 (EB)
SN 086-0041 (WB)
OVER TR 55
- SN 086-0042 (EB)
SN 086-0043 (WB)
OVER DRAINAGE DITCH
- SN 086-0037 (EB)
SN 086-0038 (WB)
OVER IL. 100
- SN 086-0031 (EB)
SN 086-0032 (WB)
OVER PLUM CREEK
- SN 086-0039
OVER WALNUT CREEK
- SN 086-0002
OVER BLUFF CREEK
- SN 086-0016
OVER SANDY CREEK
- SN 086-0019
OVER LITTLE SANDY CREEK

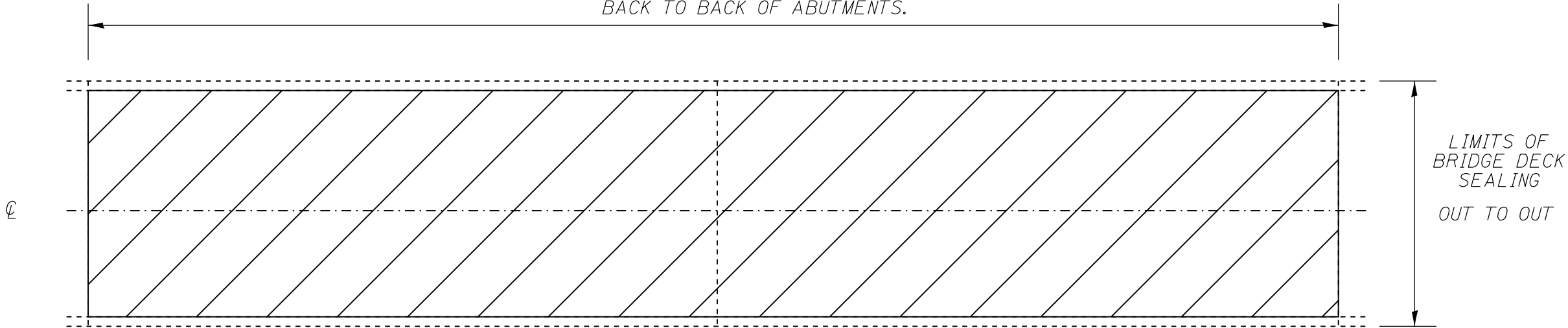


- SN 086-0027
OVER FAI 72
- SN 086-0025 (EB)
SN 086-0026 (WB)
OVER B & N RAILROAD (GONE)
- SN 086-0023 (EB)
SN 086-0024 (WB)
OVER WALNUT CREEK
- SN 086-0003
OVER SUGAR CREEK
- SN 086-0045
OVER SANDY CREEK
- SN 086-0505
OVER SANDY CREEK
- SN 086-0013
OVER LITTLE SANDY CREEK
- SN 086-0501
OVER TRIB LITTLE SANDY CREEK
- SN 086-0502
OVER LITTLE SANDY CREEK
- SN 086-0503 (SB)
SN 086-0504 (NB)
OVER GATEWAY WESTERN RR

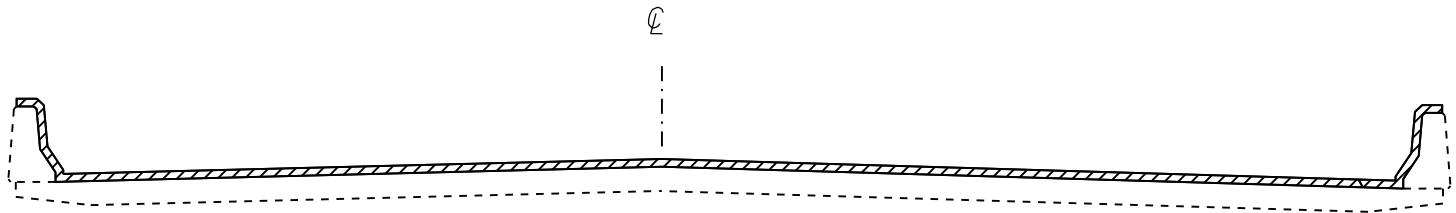


FILE NAME =	USER NAME = Verenskif	DESIGNED -	REVISED -	STATE OF ILLINOIS DEPARTMENT OF TRANSPORTATION	BRIDGE LOCATION MAP				F.A. RTE.	SECTION	COUNTY	TOTAL SHEETS	SHEET NO.	
Default		CHECKED -	REVISED -		SCALE:	SHEET	OF	SHEETS	STA.	TO	STA.	VARIOUS	16	15
		DATE -	REVISED -								ILLINOIS	FED. AID PROJECT		
													CONTRACT NO.	72J28

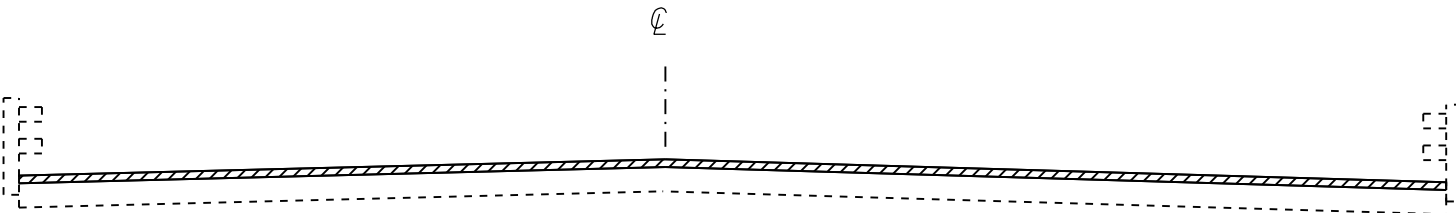
LIMITS OF BRIDGE DECK SEALING
BACK TO BACK OF ABUTMENTS.



PLAN VIEW




CROSS SECTION
WITH PARAPET



CROSS SECTION
WITH BRIDGE RAIL

NOTE: BRIDGE APPROACH PAVEMENT
SHALL NOT BE SEALED

NOT TO SCALE

 AREA TO BE SEALED

FILE NAME =	USER NAME = Verenskif	DESIGNED -	REVISED -	STATE OF ILLINOIS DEPARTMENT OF TRANSPORTATION	BRIDGE DETAIL SHEET				F.A. RTE.	SECTION	COUNTY	TOTAL SHEETS	SHEET NO.	
pw:\IL084EBIDINTEG.illinois.gov\PIWIDOT\Documents\DOT Offices\District 6\Projects\D672J28\Drawings\EA0sheets\D672J28-sht-deta		DRAWN -	REVISED -		SCALE:	SHEET	OF	SHEETS	STA.	TO	STA.	ILLINOIS FED. AID PROJECT	CONTRACT NO. 72J28	16
Default		PLOT SCALE = 100.0000' / 1in.	CHECKED -		REVISED -									
		PLOT DATE = 11/30/2016	DATE -		REVISED -									