

STATE OF ILLINOIS  
DEPARTMENT OF TRANSPORTATION  
DIVISION OF HIGHWAYS

**PROPOSED  
BRIDGE PAINTING**

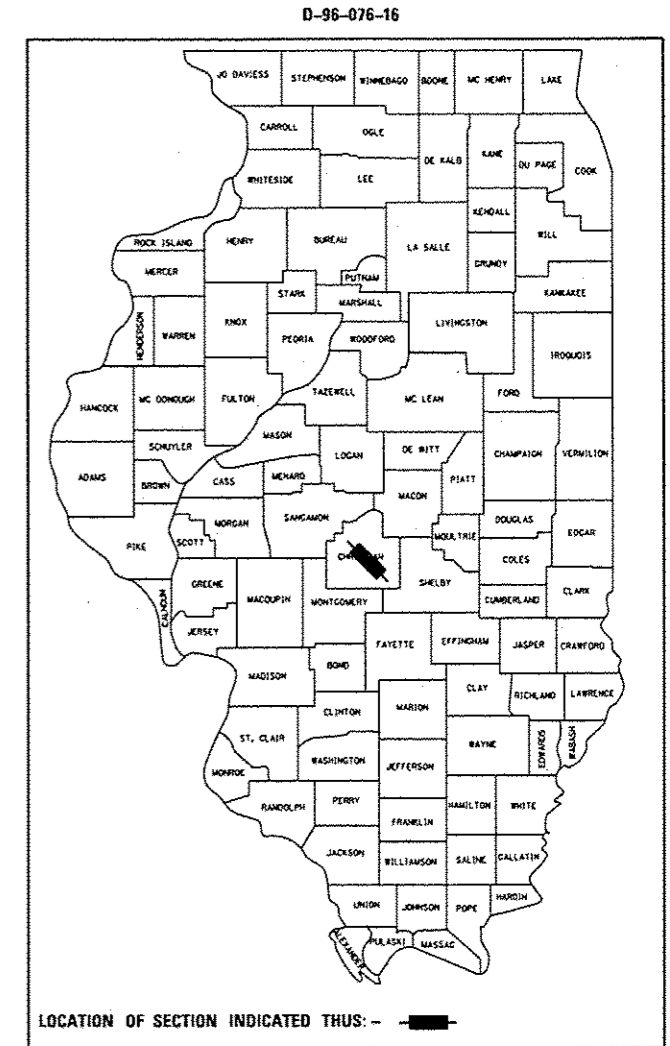
FAP 75 (IL 29)  
SECTION (4) BP

BRIDGE PAINTING  
CHRISTIAN COUNTY

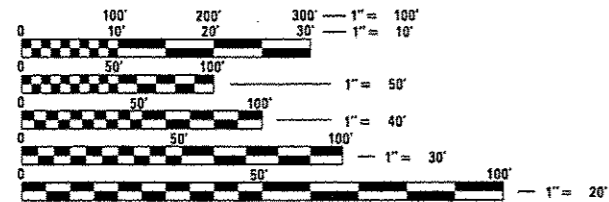
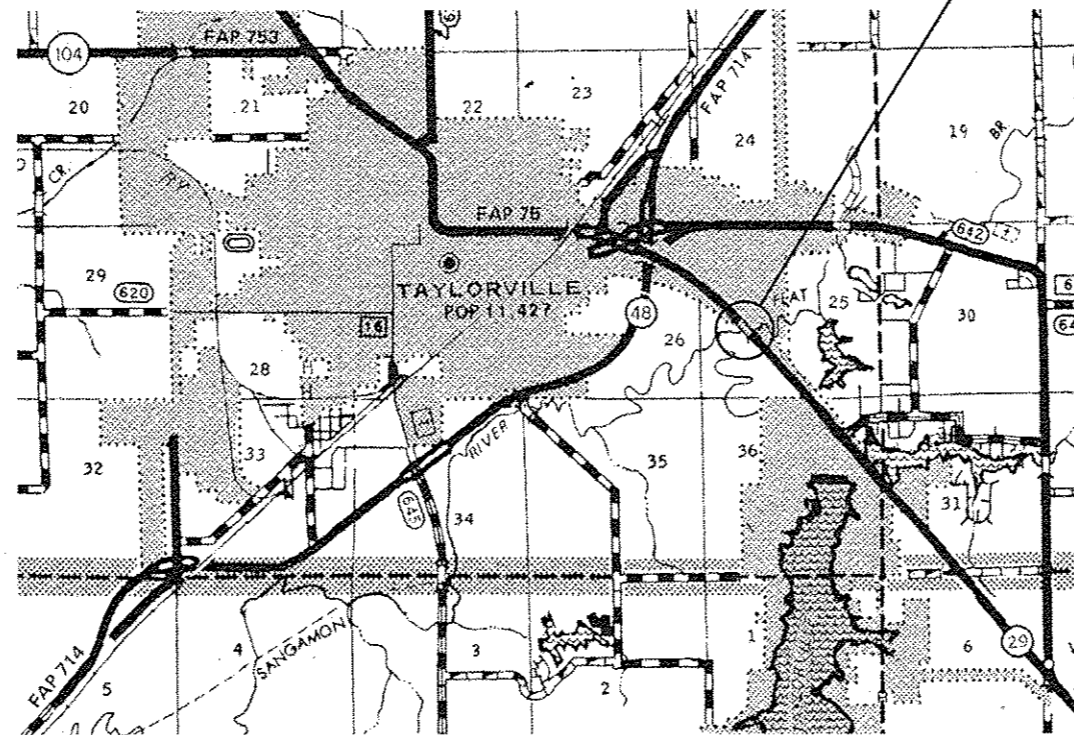
C-96-076-16

F.A.P. RTE.	SECTION	COUNTY	TOTAL SHEETS	SHEET NO.
75	(4) BP	CHRISTIAN	4	1
		ILLINOIS	CONTRACT NO. 72J38	

FOR INDEX OF SHEETS, SEE SHEET NO. 2



PROJECT LOCATION - SN 011-0011  
IL 29 OVER FLATT BRANCH  
0.7 MILES SOUTHEAST OF IL 48



FULL SIZE PLANS HAVE BEEN PREPARED USING STANDARD ENGINEERING SCALES. REDUCED SIZED PLANS WILL NOT CONFORM TO STANDARD SCALES. IN MAKING MEASUREMENTS ON REDUCED PLANS, THE ABOVE SCALES MAY BE USED.

J.U.L.I.E.  
JOINT UTILITY LOCATION INFORMATION FOR EXCAVATION  
1-800-892-0123  
OR 811

BRIDGE MAINTENANCE ENGINEER - BRANDON DUDLEY (217) 785-9290  
BRIDGE INSPECTION ENGINEER - DAVE COPENBARGER (217) 785-5306

GROSS LENGTH = NA  
NET LENGTH = NA

CONTRACT NO. 72J38

STATE OF ILLINOIS  
DEPARTMENT OF TRANSPORTATION  
DIVISION OF HIGHWAYS

SUBMITTED 13 December 2016

*[Signature]*  
REGION FOUR ENGINEER

Jan 27 2017  
*Maurice M. Addis P.E.*  
ENGINEER OF DESIGN AND ENVIRONMENT

Jan 27 2017  
*[Signature]*  
DIRECTOR OF HIGHWAYS, CHIEF ENGINEER

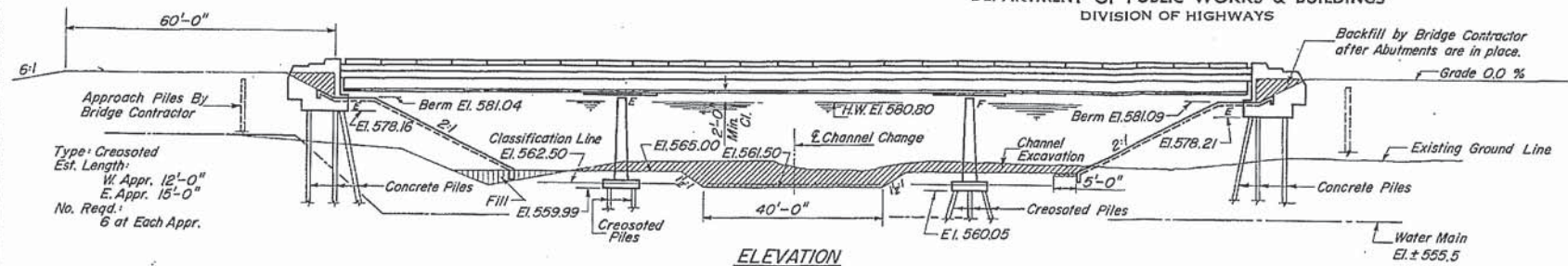
**PRINTED BY THE AUTHORITY  
OF THE STATE OF ILLINOIS**



B.M. #4 RR Spike in Power Pole 56' Rt.  
Sta. 58+91, Elev. 572.16

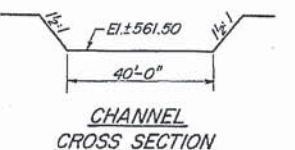
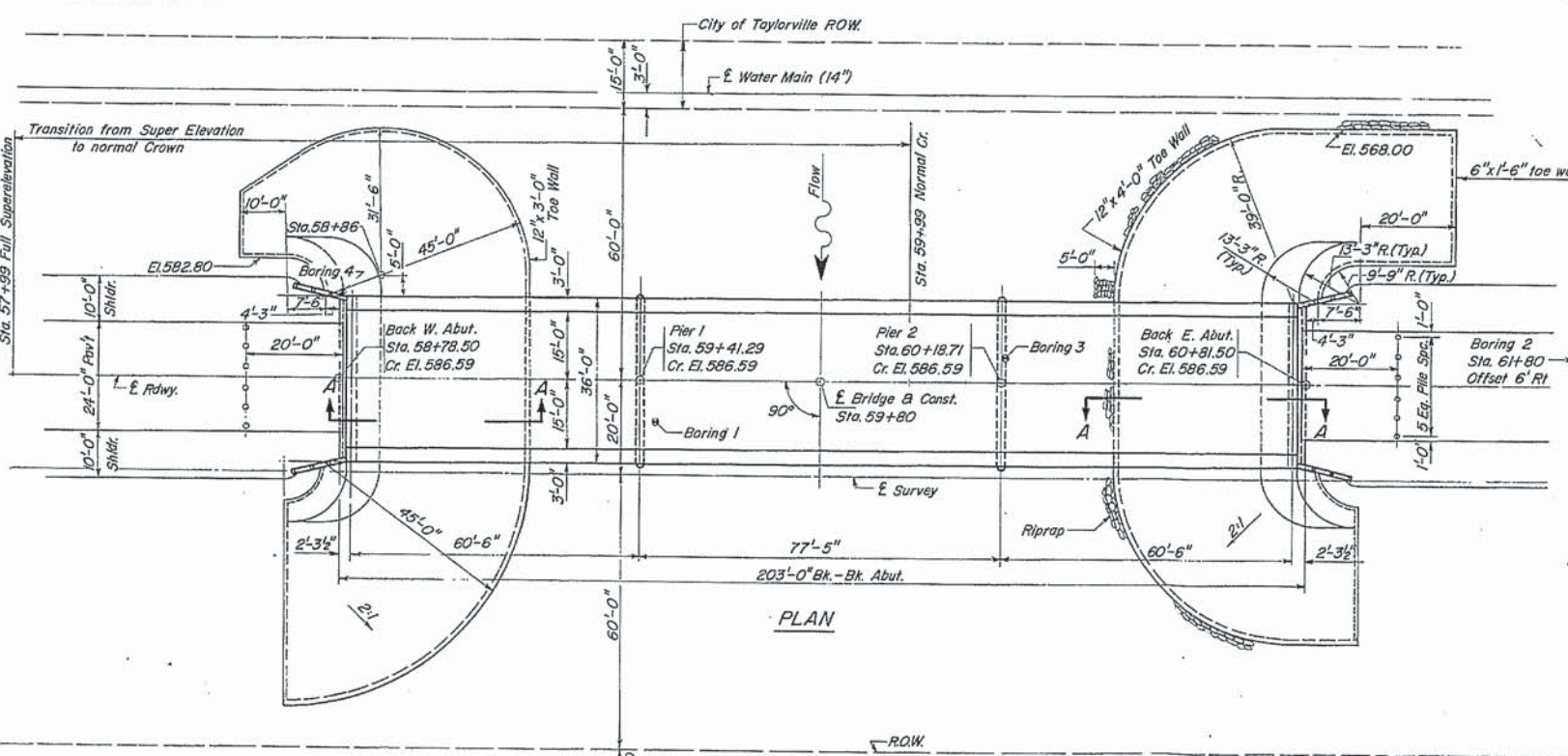
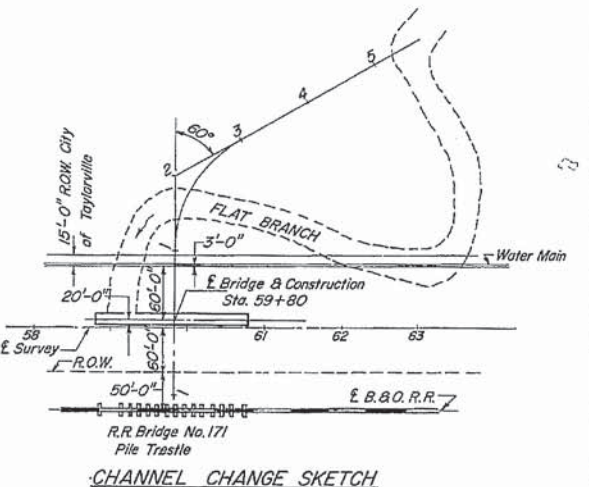
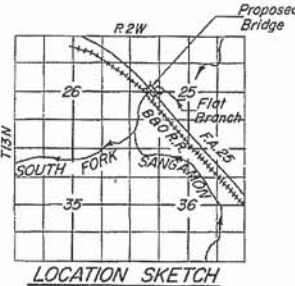
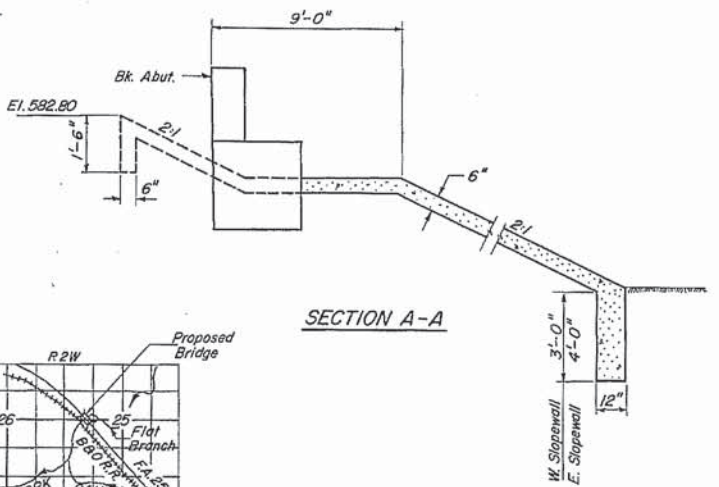
STATE OF ILLINOIS  
DEPARTMENT OF PUBLIC WORKS & BUILDINGS  
DIVISION OF HIGHWAYS

PROJECT NO.	SECTION	ENGINEER	DRAWN	CHECKED	SHEET NO.
25-4B-1	CHRISTIAN	19	4	11	11 SHEETS
F.A. PROJ. F-44 (5)					



STA. 59+80  
BUILT 196 BY  
STATE OF ILLINOIS  
F.A. RT. 25 SEC. 4B-1  
F.A. PROJ. F-44 (5)  
LOADING HS20  
**NAME PLATE**  
See Standard 2113-1

**CURVE DATA**  
P.I. = 54+57.40  
Δ = 6°-00' Rt.  
D = 0°-44'  
T = 409.50  
L = 818.10  
R = 7813.11  
E = 10.72  
P.C. = 50+47.90  
P.T. = 58+66 Bk. = 58+65 Ahead  
S.E. = 0.02 %  
S.E. Attained Sta. 49+15 to 51+15.  
Sta. 57+99 to 59+99



DESIGNED R. X. Taylor  
CHECKED Thom W. Klein  
DRAWN P. G. Barnett R. X. T.  
CHECKED [Signature]  
EXAMINED [Signature] JUN 1 1966  
PASSED [Signature]  
APPROVED [Signature]

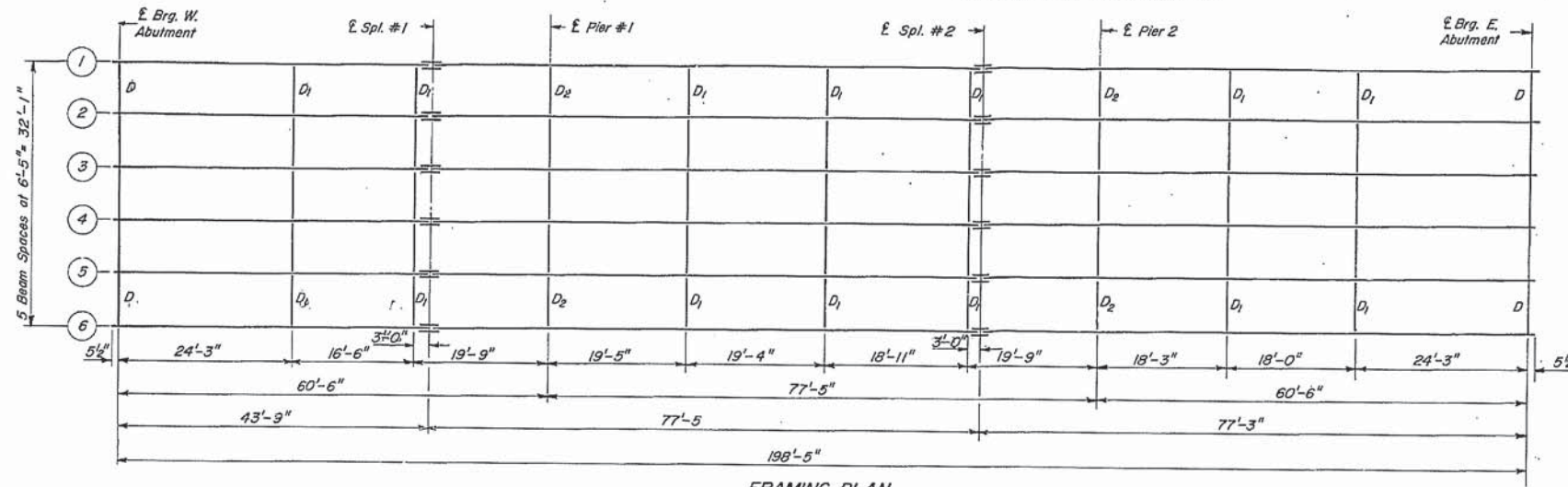
**WATERWAY INFORMATION**  
Drainage Area 278 Sq. Miles  
Character Level, Rolling, Wooded, Cultivated  
Required Opening (30 Yr. Flood) 2500 Sq. Ft.  
Present Opening (R.R. Br. 110' D.S.) 2110 Sq. Ft.  
Proposed Opening 2500 Sq. Ft.

**DESIGN STRESSES**  
f<sub>c</sub> = 1400 psi Super. & Sub.  
f<sub>s</sub> = 20,000 psi Reinf.  
f<sub>s</sub> = 20,000 psi Struct. (A-36)  
v<sub>c</sub> = 75 psi Flgs.  
L Deflection = L/1000  
n = 10  
LOADING HS20-44

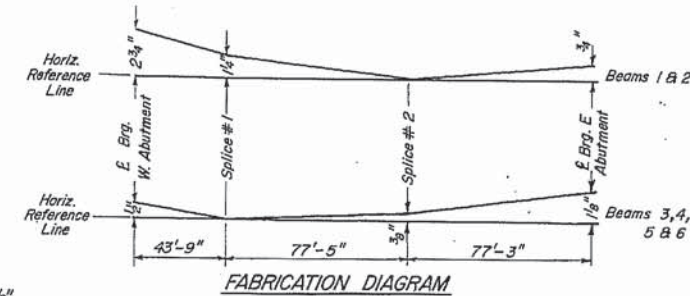
F.A. PROJ. F-44 (5)  
F.A. RT. 25 SEC. 4B-1  
OVER FLAT BRANCH  
CHRISTIAN COUNTY  
STA. 59+80

STATE OF ILLINOIS  
DEPARTMENT OF PUBLIC WORKS & BUILDINGS  
DIVISION OF HIGHWAYS

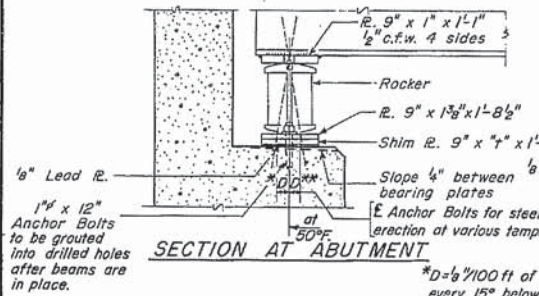
ROUTE NO.	SECTION	COUNTY	TOTAL SHEETS	SHEET NO.	SHEET NO. 6
F.A. 25	4B-1	CHRISTIAN	19	10	11 SHEETS
FILE NO.	DATE	DESIGNED	BY	DATE	



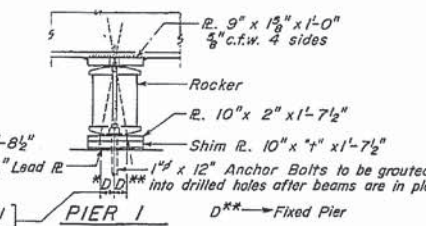
**FRAMING PLAN**  
All Beams are 36 WF 135



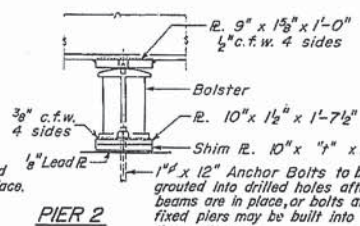
**FABRICATION DIAGRAM**



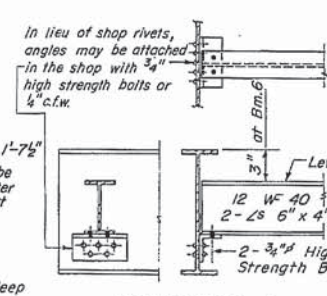
**SECTION AT ABUTMENT**



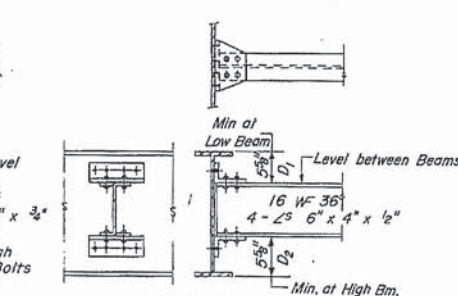
**PIER 1**



**PIER 2**



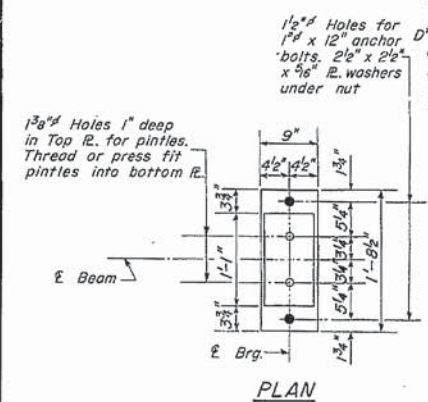
**DIAPHRAGM D**  
10 Required



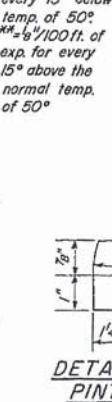
**DIAPHRAGM D1 & D2**  
45 Required

**ELEVATION TOP OF WF**

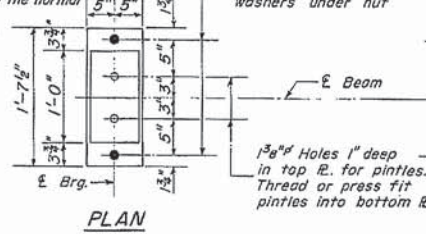
Location	Bm. 1	Bm. 2	Bm. 3	Bm. 4	Bm. 5	Bm. 6
E. Brg. W. Abut.	585.98	586.10	585.97	585.97	585.88	585.75
E. Splice # 1	585.86	585.98	585.93	585.93	585.84	585.71
E. Pier # 1	585.84	585.96	585.94	585.94	585.85	585.72
E. Splice # 2	585.76	585.88	585.96	585.96	585.87	585.74
E. Pier # 2	585.77	585.89	585.97	585.97	585.88	585.75
E. Brg. E. Abut.	585.82	585.94	586.02	586.02	585.93	585.80



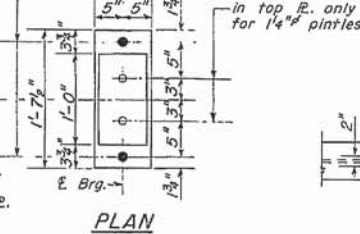
**PLAN**



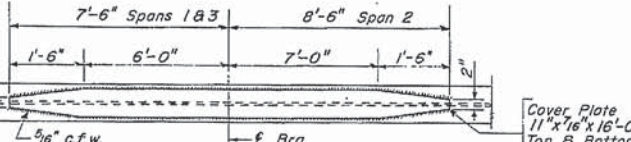
**DETAIL OF PINTLE**



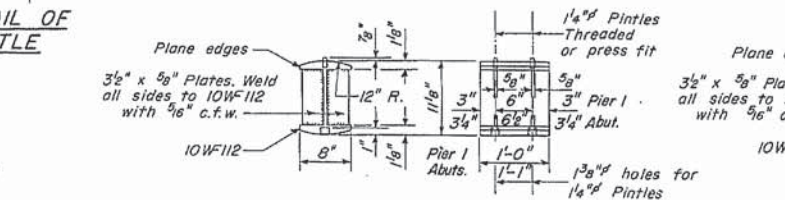
**PLAN**



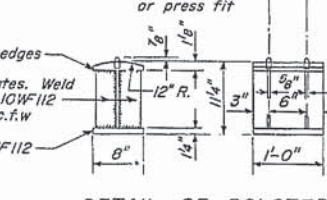
**PLAN**



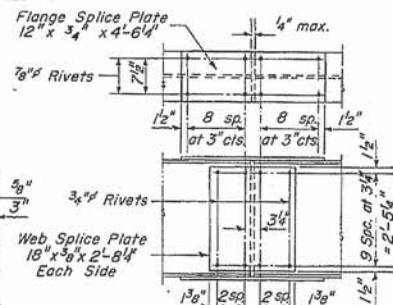
**DETAIL OF COVER PLATE**



**DETAIL OF ROCKER AT PIER 1 & ABUTMENTS**



**DETAIL OF BOLSTER AT PIER 2**



**DETAIL OF SPICE**

**TABLE OF "I" DIMENSIONS**

Beam	1	2	3-6
W. Abut.	0	0	0
Pier # 1	0	4"	0
Pier # 2	4"	0	0
E. Abut.	4"	0	0

**STRUCTURAL STEEL**  
F.A. RT. 25 SEC. 4B-1  
CHRISTIAN COUNTY  
STA. 59 + 80

DESIGNED: R. X. Taylor  
CHECKED: P. G. Barnett  
DRAWN: W. A. Sausaman Jr.  
EXAMINED: W. E. Bunn  
PASSED: J. E. O'Brien  
APPROVED: J. E. O'Brien

I-2-C 7-2-62 Rev. 11-9-62 Rev. 8-16-63