

03-03-2017 LETTING ITEM 037

STATE OF ILLINOIS  
DEPARTMENT OF TRANSPORTATION  
DIVISION OF HIGHWAYS

**PROPOSED  
BRIDGE REPAIRS**

FAP 745 (IL 104)  
SECTION (109) BJR

BRIDGE JOINT REPAIRS  
PIKE COUNTY

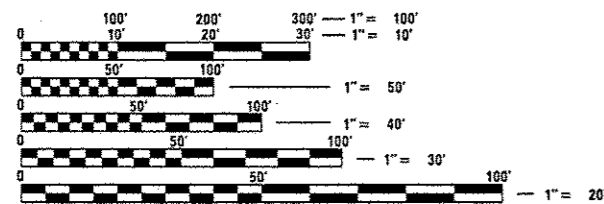
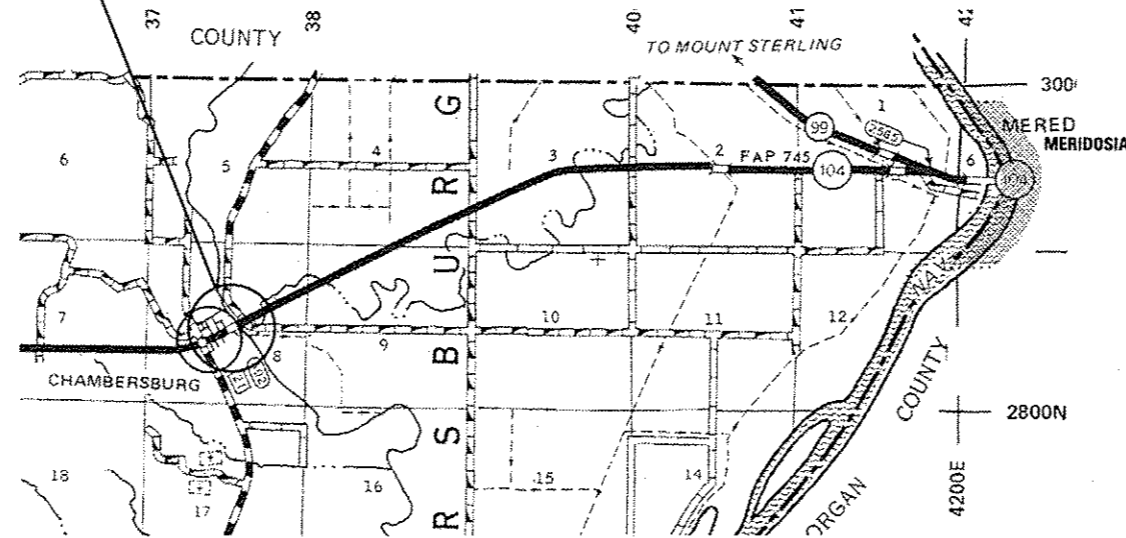
C-96-023-17

F.A.P. RTE.	SECTION	COUNTY	TOTAL SHEETS	SHEET NO.
745	(109) BJR	PIKE	4	1
		ILLINOIS	CONTRACT NO. 72J61	

FOR INDEX OF SHEETS, SEE SHEET NO. 2



PROJECT LOCATION - SN 075-0081  
IL 104 OVER MCKEE CREEK  
EAST EDGE OF CHAMBERSBURG



FULL SIZE PLANS HAVE BEEN PREPARED USING STANDARD ENGINEERING SCALES. REDUCED SIZED PLANS WILL NOT CONFORM TO STANDARD SCALES. IN MAKING MEASUREMENTS ON REDUCED PLANS, THE ABOVE SCALES MAY BE USED.

J.U.L.I.E.  
JOINT UTILITY LOCATION INFORMATION FOR EXCAVATION  
1-800-892-0123  
OR 811

BRIDGE MAINTENANCE ENGINEER - BRANDON DUDLEY (217) 785-9290  
BRIDGE INSPECTION ENGINEER - DAVE COPENBARGER (217) 785-5306

GROSS LENGTH = 496 FT = 0.09 MI  
NET LENGTH = 496 FT = 0.09 MI

CONTRACT NO. 72J61

STATE OF ILLINOIS  
DEPARTMENT OF TRANSPORTATION  
DIVISION OF HIGHWAYS

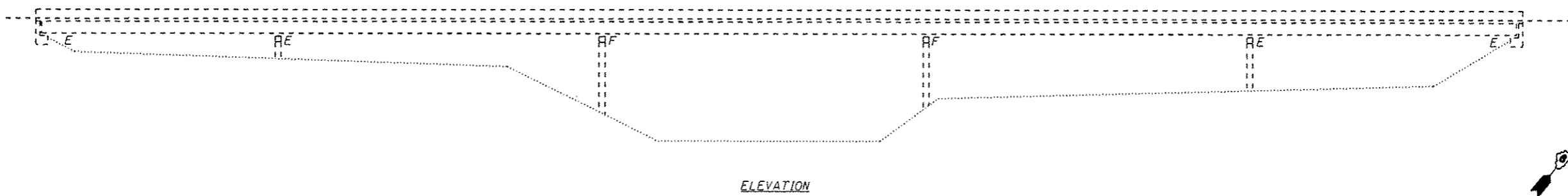
SUBMITTED *B. Decker* 10/16  
*[Signature]* REGION FOUR ENGINEER

*Jan 27* 20 17  
*Manuel M. Adonis PE*  
ENGINEER OF DESIGN AND ENVIRONMENT

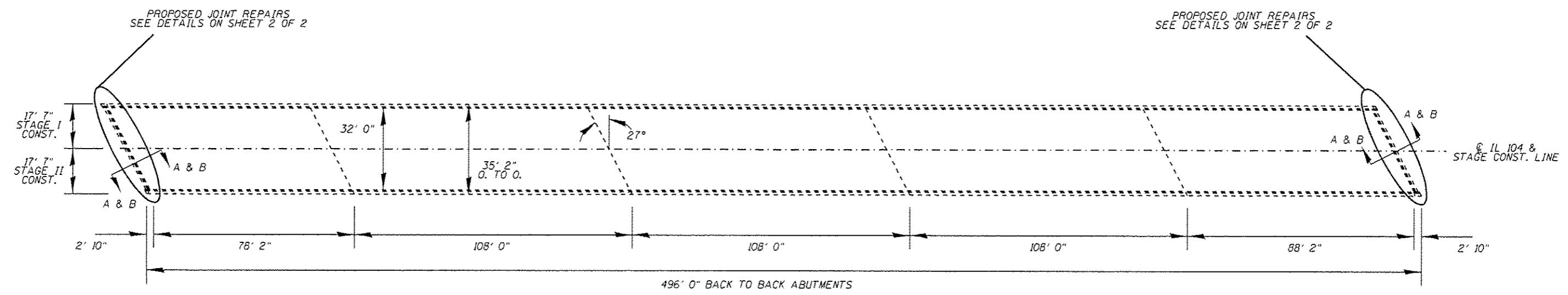
*[Signature]* 2  
DIRECTOR OF HIGHWAYS, CHIEF ENGINEER

**PRINTED BY THE AUTHORITY  
OF THE STATE OF ILLINOIS**





ELEVATION



PLAN

NOTES:

PLAN DIMENSIONS AND DETAILS RELATIVE TO EXISTING PLANS ARE SUBJECT TO NOMINAL CONSTRUCTION VARIATIONS. THE CONTRACTOR SHALL FIELD VERIFY EXISTING DIMENSIONS AND DETAILS AFFECTING NEW CONSTRUCTION AND MAKE NECESSARY APPROVED ADJUSTMENTS PRIOR TO CONSTRUCTION OR ORDERING OF MATERIALS. SUCH VARIATIONS SHALL NOT BE CAUSE FOR ADDITIONAL COMPENSATION FOR A CHANGE IN THE SCOPE OF WORK. HOWEVER, THE CONTRACTOR WILL BE PAID FOR THE QUANTITY ACTUALLY FURNISHED AT THE UNIT PRICE BID FOR THE WORK.

STRUCTURAL REPAIR OF CONCRETE IS INCLUDED IN CASE THERE IS ANY SPALLING OF CONCRETE BENEATH THE NEOPRENE JOINT REMOVAL AREA. THE CONTRACTOR SHALL NOT PERFORM THIS WORK UNLESS DIRECTED TO DO SO BY THE ENGINEER. IF USED, THE QUANTITY FOR PAYMENT SHALL BE MEASURED ON THE VERTICAL FACE OF THE SPALLED AREA AT THE END OF THE DECK OR ABUTMENT BACKWALL. THE ENGINEER SHALL NOTE REPAIRED AREAS ON THE AS-BUILT PLANS.

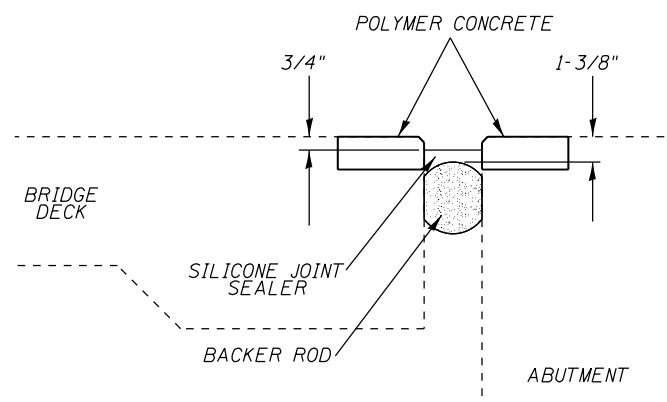


*David Carl Puzey* 1/20/17  
Expires 1/30/18

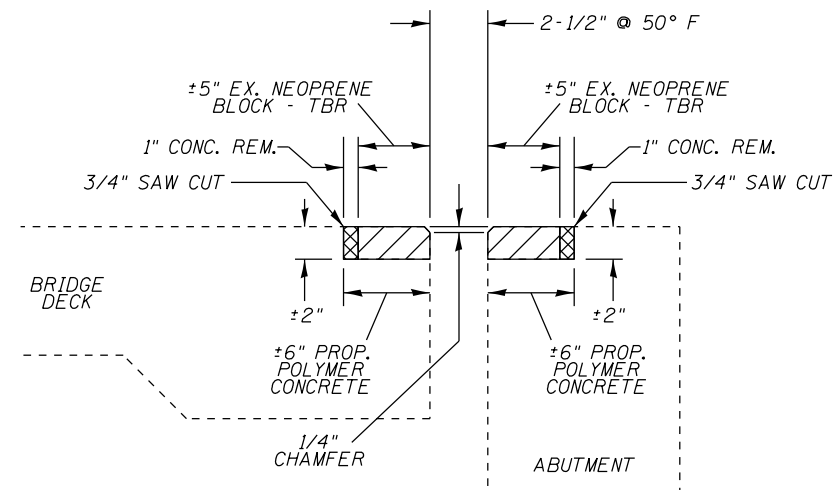
BILL OF MATERIAL		
ITEM	UNIT	QUANTITY
CONCRETE REMOVAL	CU. YD.	0.1
POLYMER CONCRETE	CU. FT.	13
SILICONE JOINT SEALER, 2-1/2"	FOOT	76
STRUCTURAL REPAIR OF CONCRETE (DEPTH EQUAL TO OR LESS THAN 5") *	SQ. FT.	10

\* SEE NOTE

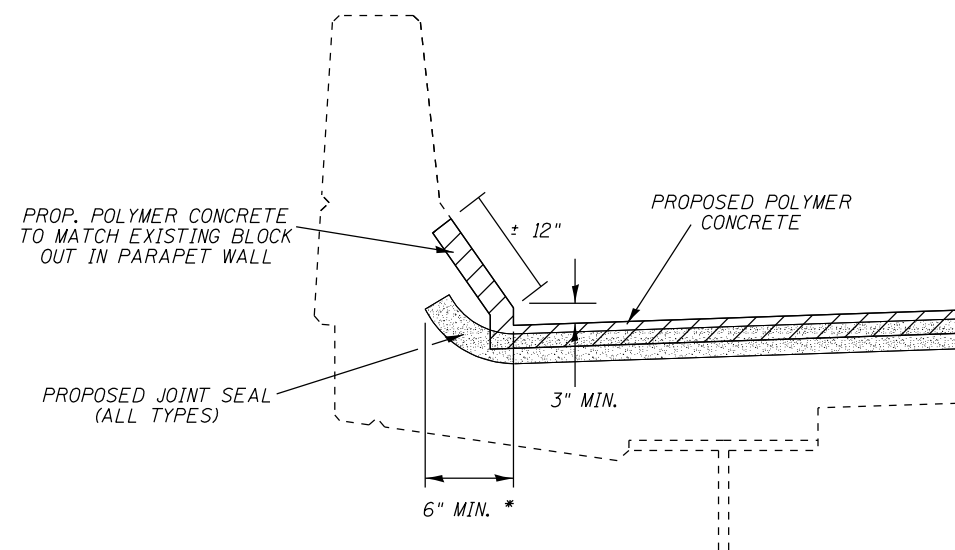
FILE NAME : D:\OPERATIONS\Bridges\Bridgplans.CAD\72J61 - 0750081 joints\plansheet.dgn	USER NAME : dudlaybn	DESIGNED -	REVISED -	<b>STATE OF ILLINOIS DEPARTMENT OF TRANSPORTATION</b>	<b>GENERAL PLAN AND ELEVATION SN 075-0081</b>		F.A.P. RTE. 745	SECTION (109) BUR	COUNTY PIKE	TOTAL SHEETS 4	SHEET NO. 3	
Default	PLOT SCALE = 100.0000 / 1" =	DRAWN -	REVISED -		SCALE:	SHEET 1 OF 2 SHEETS	STA. TO STA.	CONTRACT NO. 72J61				
	PLOT DATE = 12/13/2016	CHECKED -	REVISED -		ILLINOIS FED. AID PROJECT							
		DATE -	REVISED -									



SECTION A-A:  
SILICONE JOINT SEALER DETAIL



SECTION B-B  
PROPOSED POLYMER CONCRETE  
CROSS SECTION



\* EXTEND SEAL TO BACK OF SOUTH PARAPET.

TYPICAL PARAPET CROSS SECTION:  
JOINT SEALER END TREATMENT

NOTES:

- 1/4" CHAMFER MAY BE ACHIEVED BY GRINDING AFTER POLYMER CONCRETE HAS CURED.
- REMOVAL OF EXISTING NEOPRENE EXPANSION JOINTS SHALL BE INCLUDED IN THE COST OF CONCRETE REMOVAL.
- ANY STEEL ANCHORING STUDS ENCOUNTERED IN THE NEOPRENE JOINT REMOVAL AREA SHALL BE CUT OFF FLUSH WITH THE EXISTING CONCRETE. COST TO BE INCLUDED IN THE BID PRICE FOR CONCRETE REMOVAL.
- JOINT WIDTHS SPECIFIED IN PLANS ARE AT 50° F. THE CONTRACTOR SHALL INSTALL BACKER ROD HAVING A DIAMETER 25% GREATER THAN THE JOINT OPENING AT THE TIME OF INSTALLATION.

FILE NAME =	USER NAME = dudleybm	DESIGNED -	REVISED -
D:\OPERATIONS\Bridges\Bridgplans\CAD\72J61 - 0750081 joints\plansheet.dgn		DRAWN -	REVISED -
Default	PLOT SCALE = 100.0000' / 1in.	CHECKED -	REVISED -
	PLOT DATE = 12/13/2016	DATE -	REVISED -

STATE OF ILLINOIS  
DEPARTMENT OF TRANSPORTATION

JOINT REPAIR DETAILS  
SN 075-0081

SCALE: SHEET 2 OF 2 SHEETS STA. TO STA.

F.A.P. RTE.	SECTION	COUNTY	TOTAL SHEETS	SHEET NO.
745	(109) BJR	PIKE	4	4
CONTRACT NO. 72J61				
ILLINOIS FED. AID PROJECT				