

STATE OF ILLINOIS
DEPARTMENT OF TRANSPORTATION

F.A.I. RTE.	SECTION	COUNTY	TOTAL SHEETS	SHEET NO.
64	82-5RS-2	ST. CLAIR	7	1
		ILLINOIS	CONTRACT NO. 76K12	

FOR INDEX OF SHEETS, SEE SHEET NO. 2

PROPOSED HIGHWAY PLANS

FAI ROUTE 64 RAMP 9.37 (I-64)
SECTION 82-5RS-2

MILL & FILL
ST. CLAIR COUNTY

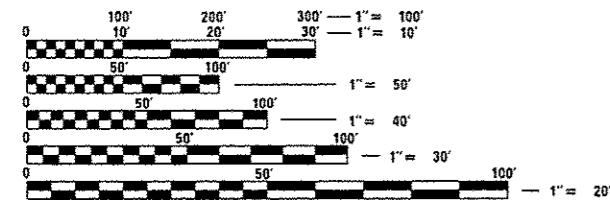
C-98-019-17

D-98-030-17



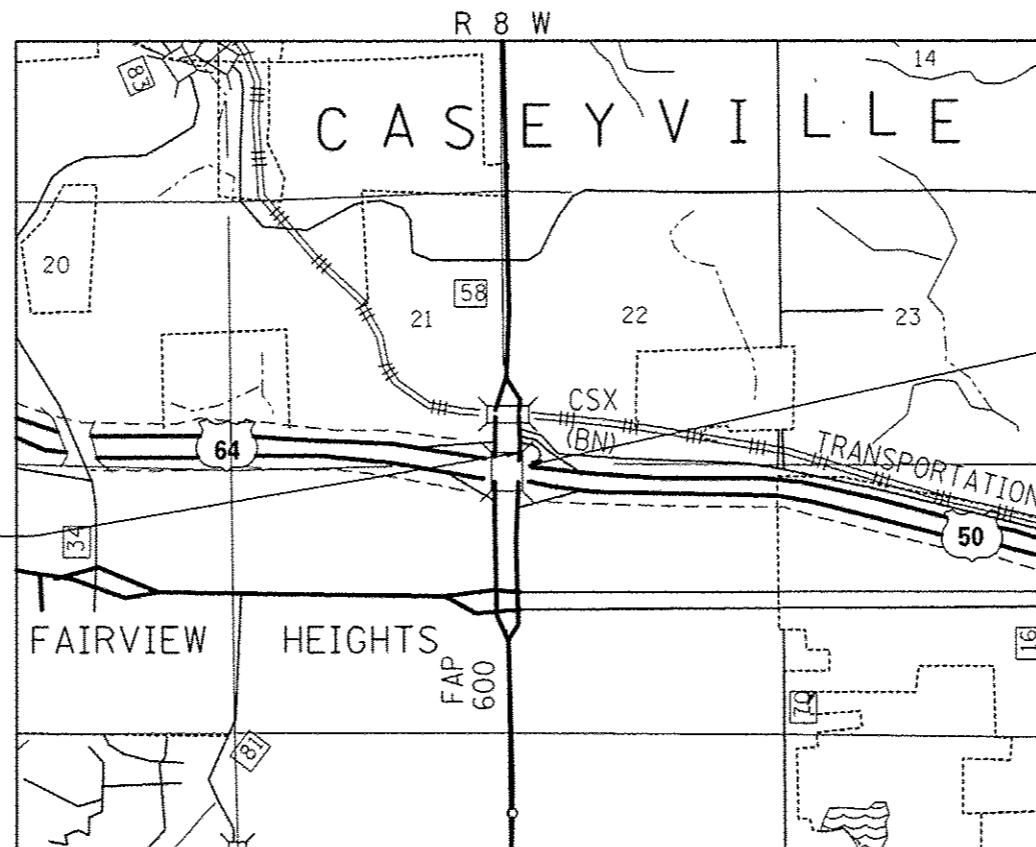
TRAFFIC DATA
NB IL 159 TO WB I-64:
2015 ADT: 6600 (ACTUAL)
2017 ADT: 6900 (ESTIMATED)
2037 ADT: 8400 (ESTIMATED)
SU: 2.7%
MU: 4.2%

FUNCTIONAL CLASSIFICATION:
INTERSTATE



FULL SIZE PLANS HAVE BEEN PREPARED USING STANDARD ENGINEERING SCALES. REDUCED SIZED PLANS WILL NOT CONFORM TO STANDARD SCALES. IN MAKING MEASUREMENTS ON REDUCED PLANS, THE ABOVE SCALES MAY BE USED.

J.U.L.I.E.
JOINT UTILITY LOCATION INFORMATION FOR EXCAVATION
1-800-892-0123
OR 811



BEGIN PROJECT
STA 0+00.00
LAT: 38.599436
LONG: -89.984842

END PROJECT
STA 10+51.70
LAT: 38.599283
LONG: -89.984203

PROJECT ENGINEER: HERVE GELIN (618)346-3179

DESIGNER: MIKE BERG (618)346-3145

CONTRACT NO. 76K12

GROSS LENGTH = 1,051.70 FT. = 0.199 MILE
NET LENGTH = 1,051.70 FT. = 0.199 MILE

STATE OF ILLINOIS
DEPARTMENT OF TRANSPORTATION

SUBMITTED Dec 15 2016
Jeffrey L. K... REGIONAL ENGINEER

Jan 27 2017
Maurice M. Addis PE Jr
ENGINEER OF DESIGN AND ENVIRONMENT

Jan 27 2017
... 2
DIRECTOR OF PROGRAM DEVELOPMENT

PRINTED BY THE AUTHORITY
OF THE STATE OF ILLINOIS

INDEX OF SHEETS

- 1 COVER SHEET
- 2 INDEX OF SHEETS, HIGHWAY STANDARDS, GENERAL NOTES & COMMITMENTS
- 3 SUMMARY OF QUANTITIES
- 4-5 TYPICAL SECTIONS
- 6 SCHEDULES
- 7 LOCATION MAP

HIGHWAY STANDARDS

- 000001-06 STANDARD SYMBOLS, ABBREVIATIONS AND PATTERNS
- 001006 DECIMAL OF AN INCH AND OF A FOOT
- 701101-05 OFF-RD OPERATIONS, MULTILANE, 15'(4.5m) TO 24'(600mm) FROM EDGE OF PAVEMENT
- 701106-02 OFF-RD OPERATIONS, MULTILANE, MORE THAN 15'(4.5m) AWAY
- 701400-09 APPROACH TO LANE CLOSURE, FREEWAY/EXPRESSWAY
- 701401-10 LANE CLOSURE, FREEWAY/EXPRESSWAY
- 701406-11 LANE CLOSURE, FREEWAY/EXPRESSWAY, DAY OPERATIONS ONLY
- 701427-05 LANE CLOSURE, MULTILANE, INTERMITTENT OR MOVING OPER., FOR SPEEDS < 40 MPH
- 701428-01 TRAFFIC CONTROL SETUP AND REMOVAL FREEWAY/EXPRESSWAY
- 701456-04 PARTIAL EXIT RAMP CLOSURE FREEWAY/EXPRESSWAY
- 701901-06 TRAFFIC CONTROL DEVICES
- 780001-05 TYPICAL PAVEMENT MARKINGS
- 781001-04 TYPICAL APPLICATION RAISED REFLECTIVE PAVEMENT MARKERS

GENERAL NOTES

1. ILLINOIS STATE LAW REQUIRES A 48-HOUR NOTICE TO BE GIVEN TO ALL UTILITIES WITHIN THE PROJECT AREA BEFORE DIGGING. FIELD MARKING OF FACILITIES MAY BE OBTAINED BY CONTACTING J.U.L.I.E. OR FOR NON-MEMBERS THE UTILITY COMPANY DIRECTLY. AGENCIES KNOWN TO HAVE FACILITIES WITHIN THE PROJECT AREA ARE AS FOLLOWS:

	ABOVE GROUND	BELOW GROUND
*AMEREN ILLINOIS (GAS & ELECTRIC)	X	X
*AT&T ILLINOIS (COMMUNICATIONS)	X	X
*BUCKEYE PARTNERS L.P. - WOOD RIVER PIPELINE (PIPELINE)		X
*CASEVILLE TOWNSHIP ADVANCED WASTEWATER TREATMENT SYSTEM (SANITARY WATER)		X
*CHARTER COMMUNICATIONS, INC. (CABLE TV)	X	X
*CITY OF FAIRVIEW HEIGHTS (SANITARY SEWER)		X
*CITY OF O'FALLON (WATER & SANITARY SEWER)		X

MEMBERS OF J.U.L.I.E. CALL TOLL FREE (800)-892-0123 OR 811 AND ARE INDICATED BY *. NON J.U.L.I.E. MEMBERS MUST BE NOTIFIED INDIVIDUALLY.

- 2. FLAGGERS SHALL BE PRESENT DURING ALL CLOSURE HOURS INCLUDING LUNCH HOUR AND NO ADDITIONAL COMPENSATION SHALL BE ALLOWED.
- 3. THE THICKNESS OF HOT-MIX ASPHALT SURFACE MIXTURES SHOWN ON THE PLANS IS THE NOMINAL THICKNESS. DEVIATIONS MAY OCCUR DUE TO IRREGULARITIES IN THE EXISTING SURFACE OR BASE ON WHICH THE BITUMINOUS MIXTURE IS PLACED.
- 4. THE CONTRACTOR SHALL VERIFY ALL DIMENSIONS AND CONDITIONS IN THE FIELD PRIOR TO CONSTRUCTION AND ORDERING MATERIALS.

GENERAL NOTES (CONT.)

5. THE ILLINOIS DEPARTMENT OF TRANSPORTATION STRONGLY ENCOURAGES THE PRIME CONTRACTOR AND THEIR APPROVED SUB-CONTRACTORS TO HIRE MINORITY, WOMEN AND DISADVANTAGED INDIVIDUALS FROM ITS FEDERALLY FUNDED HIGHWAY CONSTRUCTION CAREERS TRAINING PROGRAM (HCCTP) TO HELP MEET WORKFORCE AND TRAINEE GOALS. THIS PROGRAM IS TRAINING MINORITIES, WOMEN AND DISADVANTAGED INDIVIDUALS IN HIGHWAY CONSTRUCTION-RELATED SKILLS, E.G., MATH FOR THE TRADES, JOB READINESS, TECHNICAL SKILLS COURSEWORK (CARPENTRY, CONCRETE FLATWORK, BLUEPRINT READING, SITE PLANS, SITE WORK, TOOLS USE, ETC.) AND OSHA 10 HOUR CERTIFICATION, TO PREPARE THEM FOR A CAREER IN THE HIGHWAY CONSTRUCTION TRADES. GRADUATES ARE WELL-TRAINED AND READY TO BECOME PRODUCTIVE ENTRY-LEVEL CONSTRUCTION WORKERS. PLEASE CONTACT THE DISTRICT 8 EEO OFFICE AT 618-346-3360 AND/OR THE HCCTP COORDINATOR AT 618/874-6528 TO LEARN MORE ABOUT THE PROGRAM AND FOR ASSISTANCE IN MEETING WORKFORCE AND TRAINEE GOALS.

MIXTURE REQUIREMENTS

ROUTE	FAI 64 (I-64)
SECTION	82-5RS-2
COUNTY	ST. CLAIR
CONTRACT	76K12

DESCRIPTION:	RESURFACING I-64 FROM NB IL 259 TO WB I-64
--------------	--

ADT (CONSTRUCTION YR.)	6600
MU%:	4
SU%:	3
20 YR. ESAL:	1.68

MIXTURE USE	POLY SMA SURFACE	LEVEL BINDER	TURN LANE
AC/PG	SBS PG 76-22	PG-64-22	SBS PG 76-22
RAP % (MAX)	SEE SPEC	SEE SPEC	SEE SPEC
DESIGN AIR VOIDS	4.0% @ Ndes=80	4.0% @ Ndes=70	4.0% @ Ndes=90
MIX COMPOSITION (GRADATION)	IL 12.5	IL 9.5FG	IL 9.5
FRICTION AGG	SMA	MIXTURE "C"	MIXTURE "E"
QUALITY MGMT PROGRAM	QC/QA	QC/QA	QC/QA

MIXTURE USE	SHOULDERS * 2.25"	SHOULDERS < 2.25"
AC/PG	PG-64-22	PG-64-22
RAP % (MAX)	SEE SPEC	SEE SPEC
DESIGN AIR VOIDS	4.0% @ Ndes=30	4.0% @ Ndes=30
MIX COMPOSITION (GRADATION)	IL 19.0L	IL 9.5L
FRICTION AGG		
QUALITY MGMT	QC/QA	QC/QA

NOTE: PLAN QUANTITIES FOR BITUMINOUS CONCRETE SURFACE COURSE ITEMS ARE CALCULATED USING A UNIT WEIGHT OF 112 LB/SQ YD/IN (59.8 KG/SQ M/25MM THICKNESS).

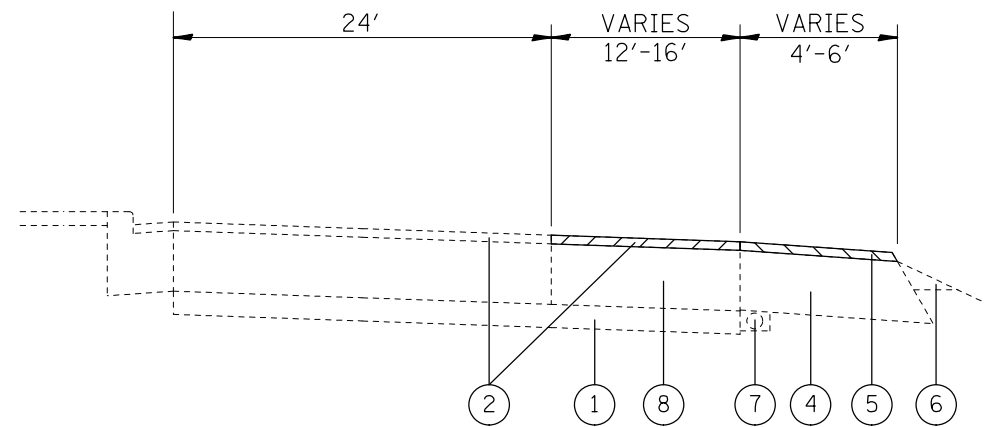
COMMITMENTS
NONE

CODE NO.	ITEM	UNIT	TOTAL QUANTITY	100% STATE
				CONSTR. CODE
				ROADWAY 0005 URBAN
40600290	BITUMINOUS MATERIALS (TACK COAT)	POUND	1401	1401
40600637	LEVELING BINDER (MACHINE METHOD), IL-9.5FG, N70	TON	97	97
40600990	TEMPORARY RAMP	SQ YD	25	25
40603153	POLYMERIZED HOT-MIX ASPHALT SURFACE COURSE, STONE MATRIX ASPHALT, N80	TON	199	199
40603570	POLYMERIZED HOT-MIX ASPHALT SURFACE COURSE, MIX "E", N90	TON	34	34
44000155	HOT-MIX ASPHALT SURFACE REMOVAL, 1 1/2"	SQ YD	142	142
44000158	HOT-MIX ASPHALT SURFACE REMOVAL, 2 1/4"	SQ YD	398	398
44000159	HOT-MIX ASPHALT SURFACE REMOVAL, 2 1/2"	SQ YD	885	885
44000161	HOT-MIX ASPHALT SURFACE REMOVAL, 3"	SQ YD	1416	1416
48102100	AGGREGATE WEDGE SHOULDER, TYPE B	TON	67	67
48203100	HOT-MIX ASPHALT SHOULDERS	TON	62	62
67100100	MOBILIZATION	LSUM	1	1
70100800	TRAFFIC CONTROL AND PROTECTION, STANDARD 701401	LSUM	1	1
70100825	TRAFFIC CONTROL AND PROTECTION, STANDARD 701456	LSUM	1	1

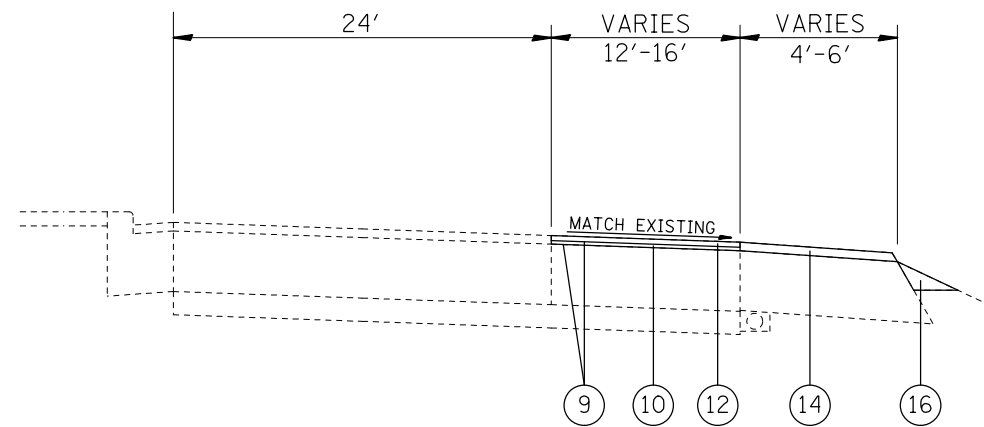
CODE NO.	ITEM	UNIT	TOTAL QUANTITY	100% STATE
				CONSTR. CODE
				ROADWAY 0005 URBAN
70300100	SHORT TERM PAVEMENT MARKING	FOOT	108	108
70300150	SHORT TERM PAVEMENT MARKING REMOVAL	SQ FT	36	36
70300210	TEMPORARY PAVEMENT MARKING LETTERS AND SYMBOLS	SQ FT	22	22
70300220	TEMPORARY PAVEMENT MARKING - LINE 4"	FOOT	1979	1979
70300250	TEMPORARY PAVEMENT MARKING - LINE 8"	FOOT	129	129
* 78000100	THERMOPLASTIC PAVEMENT MARKING - LETTERS AND SYMBOLS	SQ FT	22	22
* 78000200	THERMOPLASTIC PAVEMENT MARKING - LINE 4"	FOOT	1979	1979
* 78000500	THERMOPLASTIC PAVEMENT MARKING - LINE 8"	FOOT	129	129
* 78100100	RAISED REFLECTIVE PAVEMENT MARKER	EACH	22	22
78300200	RAISED REFLECTIVE PAVEMENT MARKER REMOVAL	EACH	22	22
X0327980	PAVEMENT MARKING REMOVAL - WATER BLASTING	SQ FT	768	768

* SPECIALTY ITEM

FILE NAME =	USER NAME = nuyesa	DESIGNED -	REVISED -	STATE OF ILLINOIS DEPARTMENT OF TRANSPORTATION	SCHEDULE OF QUANTITIES				F.A.I. RTE:	SECTION	COUNTY	TOTAL SHEETS	SHEET NO.
p:\ILB04EB\INTEG.illinois.gov\PI001\Do	Documents\DOT Offices\District 8\Projects\087	CHECKED -	REVISED -		64	82-5RS-2	ST. CLAIR	7	3				
	PLOT SCALE = 100,0000' / in.	DATE -	REVISED -		SCALE: NTS SHEET 1 OF 1 SHEETS STA. TO STA.				ILLINOIS FED. AID PROJECT				
	PLOT DATE = 12/16/2016								CONTRACT NO. 76K12				



IL 159 NB
STA 0+00 TO STA. 2+55.50



IL 159 NB
STA 0+00 TO STA. 2+55.50

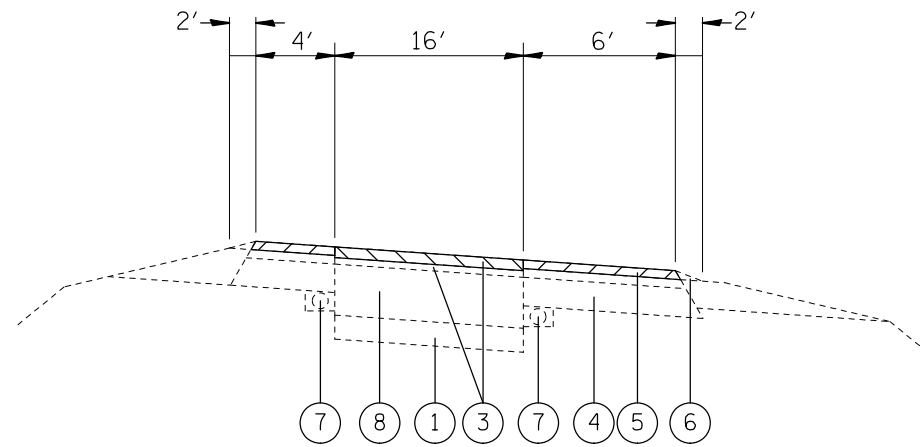
LEGEND

- ① EXISTING STABILIZED SUB-BASE, 4"
- ② EXISTING HMA SURFACE COURSE, 2 1/4"
- ③ EXISTING HMA SURFACE COURSE, 5"
- ④ EXISTING BITUMINOUS SHOULDER, 8"
- ⑤ EXISTING HMA SHOULDER
- ⑥ EXISTING AGGREGATE SHOULDERS, TYPE B
- ⑦ EXISTING PIPE UNDERDRAIN
- ⑧ EXISTING RPCC PAVEMENT, 8"
- ⑨ PROPOSED BITUMINOUS MATERIALS (TACK COAT)
- ⑩ PROPOSED LEVELING BINDER, 3/4"
- ⑪ PROPOSED LEVELING BINDER, 1"
- ⑫ PROPOSED POLYMERIZED HMA SURFACE COURSE, 1 1/2"
- ⑬ PROPOSED HMA SURFACE COURSE, SMA, 2"
- ⑭ PROPOSED HMA SHOULDER, 1 1/2"
- ⑮ PROPOSED HMA SOULDER, 2 1/2"
- ⑯ PROPOSED AGGREAGATE WEDGE SHOULDER, TYPE B

HMA SURFACE REMOVAL, 1 1/2"

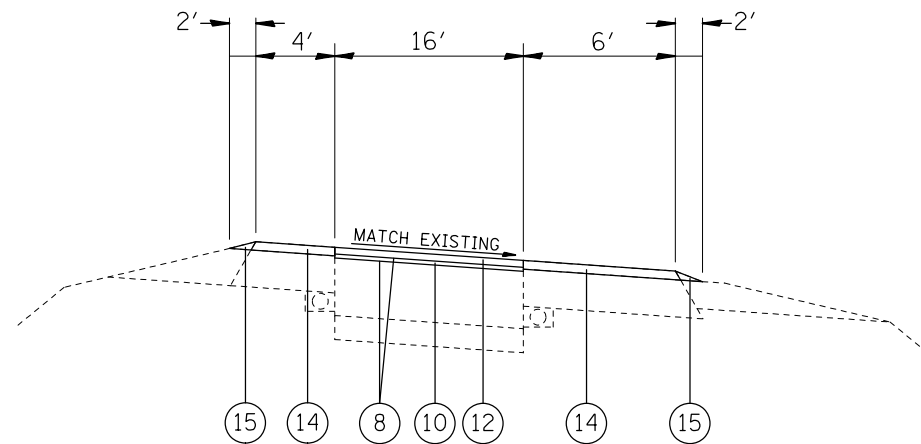
HMA SURFACE REMOVAL, 2 1/4"

FILE NAME =	USER NAME = nievesa	DESIGNED -	REVISED -	STATE OF ILLINOIS DEPARTMENT OF TRANSPORTATION	EXISTING AND PROPOSED TYPICAL SECTION IL 159 NB			F.A.I. RTE.	SECTION	COUNTY	TOTAL SHEETS	SHEET NO.
pw:\IL084EBIDINTEG\illinois.gov\PWIDOT\Documents\DOT Offices\District 8\Projects\0875\Drawings\CADsheets\0875-12-typical	DESIGNED -	REVISED -	64					82-5RS-2	ST. CLAIR	7	4	
PLOT SCALE = 100.0000' / in.	CHECKED -	REVISED -	CONTRACT NO. 76K12									
PLOT DATE = 12/16/2016	DATE -	REVISED -	ILLINOIS FED. AID PROJECT									
				SCALE: NTS	SHEET 1	OF 2	SHEETS	STA.	TO STA.			



I-64 ON-RAMP

STA. 2+55.50 TO STA. 10+51.70



I-64 ON-RAMP

STA. 2+55.50 TO STA. 10+51.70

LEGEND

- ① EXISTING STABILIZED SUB-BASE, 4"
- ② EXISTING HMA SURFACE COURSE, 2 1/4"
- ③ EXISTING HMA SURFACE COURSE, 5"
- ④ EXISTING BITUMINOUS SHOULDER, 8"
- ⑤ EXISTING HMA SHOULDER
- ⑥ EXISTING AGGREGATE SHOULDERS, TYPE B
- ⑦ EXISTING PIPE UNDERDRAIN
- ⑧ EXISTING RPCC PAVEMENT, 8"
- ⑨ PROPOSED BITUMINOUS MATERIALS (TACK COAT)
- ⑩ PROPOSED LEVELING BINDER, 3/4"
- ⑪ PROPOSED LEVELING BINDER, 1"
- ⑫ PROPOSED POLYMERIZED HMA SURFACE COURSE, 1 1/2"
- ⑬ PROPOSED HMA SURFACE COURSE, SMA, 2"
- ⑭ PROPOSED HMA SHOULDER, 1 1/2"
- ⑮ PROPOSED HMA SOULDER, 2 1/2"
- ⑯ PROPOSED AGGREAGATE WEDGE SHOULDER, TYPE B

HMA SURFACE REMOVAL, 2 1/2"

HMA SURFACE REMOVAL, 3"

FILE NAME =	USER NAME = nievesa	DESIGNED -	REVISED -	STATE OF ILLINOIS DEPARTMENT OF TRANSPORTATION	EXISTING AND PROPOSED TYPICAL SECTIONS			F.A.I. RTE.	SECTION	COUNTY	TOTAL SHEETS	SHEET NO.	
DRAWN					I-64 RAMP			64	82-5RS-2	ST. CLAIR	7	5	
PLOT SCALE = 100.0000' / 1in.					CHECKED -			CONTRACT NO. 76K12			ILLINOIS FED. AID PROJECT		
PLOT DATE = 12/16/2016					DATE -			SCALE: NTS			SHEET 2 OF 2 SHEETS STA. TO STA.		

RESURFACING SCHEDULE											
STATION	TO	STATION	WIDTH	BITUMINOUS MATERIALS (TACK COAT)	POLYMERIZED HMA SURFACE COURSE, MIX E, N90, 1 1/2"	LEVELING BINDER (MACHINE METHOD), IL 9.5FG, N70		POLYMERIZED HMA SURFACE COURSE, SMA, N80	HMA SHOULDERS		AGGREGATE WEDGE SHOULDER, TYPE B
						3/4"	1"		1 1/2"	2 1/2"	
			FOOT	POUND	TON	TON	TON	TON	TON	TON	TON
0+00.00	TO	2+55.50	VARIES	365	34	17			12		7
2+55.50	TO	10+51.70	16	1036			80	199		50	60
SUBTOTALS				1401	34	17	80	199	12	50	67
TOTALS				1401	34	97		199	62		67

TEMPORARY RAMP SCHEDULE	
STATION	TEMPORARY RAMP
	SQ YD
0+00.00	12
10+51.70	15
TOTAL	27

PAVEMENT REMOVAL SCHEDULE							
STATION	TO	STATION	WIDTH	HMA PAVEMENT REMOVAL, 1 1/2"	HMA PAVEMENT REMOVAL, 2 1/4"	HMA PAVEMENT REMOVAL, 2 1/2"	HMA PAVEMENT REMOVAL, 3"
				SQ YD	SQ YD	SQ YD	SQ YD
0+00.0	TO	2+55.50	VARIES	142	398		
2+55.50	TO	10+51.70	16			885	1416
TOTAL				142	398	885	1416

PAVEMENT MARKING SCHEDULE									
STATION	TO	STATION	THERMOPLASTIC				RAISED REFLECTIVE		RAISED REFLECTIVE PAVEMENT MARKERS REMOVAL
			LINE 4"		LINE 8"	LETTERS & SYMBOLS	CRYSTAL	CRYSTAL	
			WHITE	YELLOW	WHITE	WHITE	LT @ 40'	RT @ 20'	
			FOOT	FOOT	FOOT	SQ FT	EACH	EACH	EACH
0+00.00	TO	1+27.18	256			22	4	7	11
1+27.18	TO	2+55.50	129		129		4	7	11
2+55.50	TO	10+51.70	797	797					
SUB-TOTALS			1182	797	129	22	8	14	22
TOTALS			1979		129	22	22		22

