

STATE OF ILLINOIS
DEPARTMENT OF TRANSPORTATION

F.A.I. RTE.	SECTION	COUNTY	TOTAL SHEETS	SHEET NO.
64	82-(8,9,10)CJS-1	ILLINOIS	7	1
CONTRACT NO. 76K10			*ST. CLAIR, CLINTON	

FOR INDEX OF SHEETS, SEE SHEET NO. 2

PROPOSED HIGHWAY PLANS

FAI ROUTE 64 (I-64)
SECTION 82-(8,9,10)CJS-1

CRACK SEAL
ST. CLAIR, CLINTON COUNTY

C-98-014-17

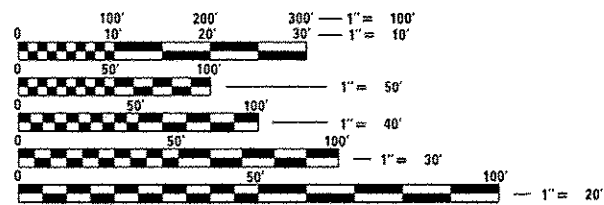


ADI

IL 158 TO IL 4
2015 ADT = 37200 (ACTUAL)
2017 ADT = 37900 (ESTIMATED)
2037 ADT = 46300 (ESTIMATED)
SU = 3.0% MU = 18.3%

IL 4 TO IL 161
2015 ADT = 30900 (ACTUAL)
2017 ADT = 31500 (ESTIMATED)
2037 ADT = 38500 (ESTIMATED)
SU = 3.6% MU = 23.3%

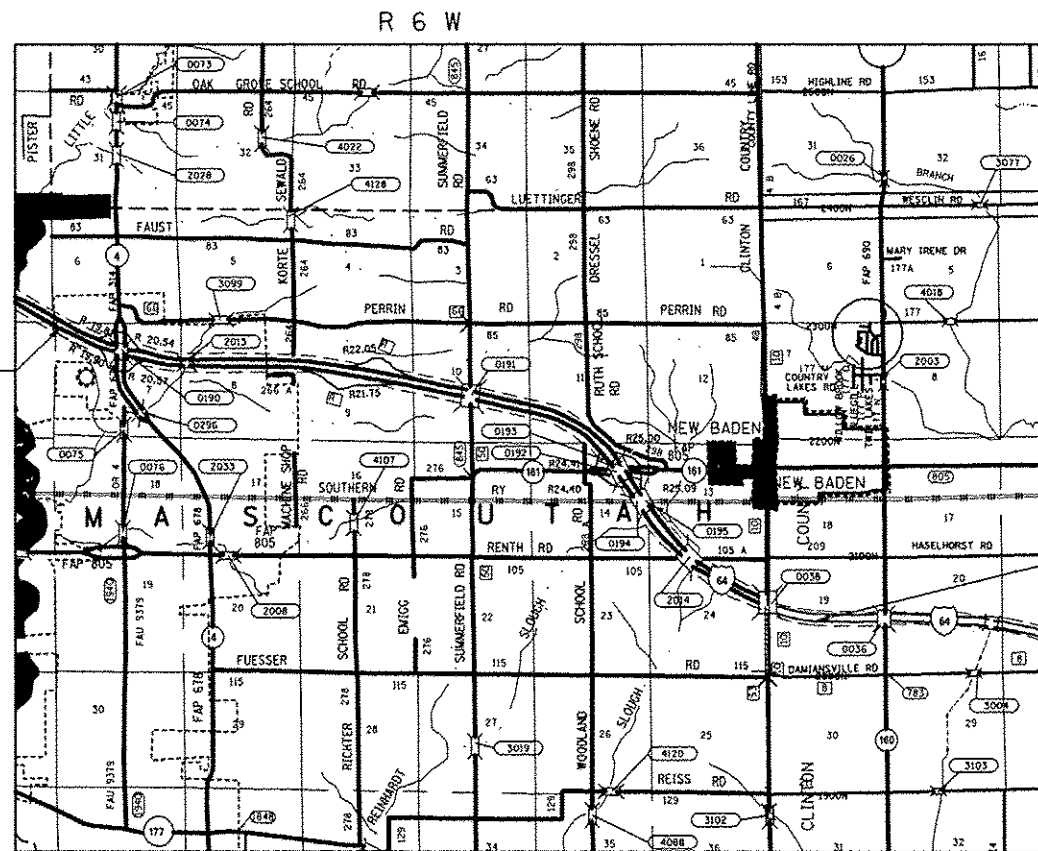
IL 161 TO ALBERS RD
2015 ADT = 25400 (ACTUAL)
2017 ADT = 25900 (ESTIMATED)
2037 ADT = 31600 (ESTIMATED)
SU = 3.6% MU = 27.6%



FULL SIZE PLANS HAVE BEEN PREPARED USING STANDARD ENGINEERING SCALES. REDUCED SIZED PLANS WILL NOT CONFORM TO STANDARD SCALES. IN MAKING MEASUREMENTS ON REDUCED PLANS, THE ABOVE SCALES MAY BE USED.

J.U.L.I.E.
JOINT UTILITY LOCATION INFORMATION FOR EXCAVATION
1-800-892-0123
OR 811

BEGIN PROJECT
STA 1103+03
LAT: 38.55444
LONG: -89.81611



N
T 1 N

END PROJECT
STA 1475+80
LAT: 38.51722
LONG: -89.69778

GROSS LENGTH = 37,277 FT. = 7.060 MILE
NET LENGTH = 36,897 FT. = 6.988 MILE

TOWNSHIPS:
MASCOUTAH TOWNSHIP
LOOKING GLASS TOWNSHIP

PROJECT ENGINEER: HERVE GELIN (618) 346-3179
DESIGNER: ALVIN NIEVES-ROSARIO (618) 346-3187

CONTRACT NO. 76K10

STATE OF ILLINOIS
DEPARTMENT OF TRANSPORTATION

SUBMITTED *Dec 5 20 16*
Jeffrey Z. Kammer
REGIONAL ENGINEER

Jan 27 20 17
Maureen M. Addis
ENGINEER OF DESIGN AND ENVIRONMENT

Jan 27 20 17
Amelia Allen
DIRECTOR OF PROGRAM DEVELOPMENT

PRINTED BY THE AUTHORITY
OF THE STATE OF ILLINOIS

INDEX OF SHEETS

- 1 COVER SHEET
- 2 INDEX OF SHEETS, HIGHWAY STANDARDS, GENERAL NOTES & COMMITMENTS
- 3 SUMMARY OF QUANTITIES
- 4 TYPICAL SECTIONS
- 5 SCHEDULES
- 6 LOCATION MAP
- 7 CRACK & JOINT SEALING DETAIL

HIGHWAY STANDARDS

- 000001-06 STANDARD SYMBOLS, ABBREVIATIONS AND PATTERNS
- 701101-05 OFF-RD OPERATIONS, MULTILANE, 15'(4.5m) TO 24'(600mm) FROM EDGE OF PAVEMENT
- 701106-02 OFF-RD OPERATIONS, MULTILANE, MORE THAN 15'(4.5m) AWAY
- 701400-09 APPROACH TO LANE CLOSURE, FREEWAY/EXPRESSWAY
- 701401-10 LANE CLOSURE FREEWAY/EXPRESSWAY
- 701411-09 LANE CLOSURE, MULTILANE, AT ENTRANCE OR EXIT RAMP, FOR SPEEDS ≥ 45MPH
- 701426-09 LANE CLOSURE, MULTILANE, INTERMITTENT OR MOVING OPER., FOR SPEEDS ≥ 45MPH
- 701428-01 TRAFFIC CONTROL SETUP AND REMOVAL FREEWAY/EXPRESSWAY
- 701901-06 TRAFFIC CONTROL DEVICES

GENERAL NOTES

1. ILLINOIS STATE LAW REQUIRES A 48-HOUR NOTICE TO BE GIVEN TO UTILITIES BEFORE DIGGING. FIELD MARKING OF FACILITIES MAY BE OBTAINED BY CONTACTING J.U.L.I.E. (1-800-892-0123 OR 811) OR FOR NON-MEMBERS THE UTILITY COMPANY DIRECTLY.
2. UTILITY INTERFERENCES ARE NOT ANTICIPATED ON THIS CONTRACT. IT SHALL BE THE CONTRACTOR'S RESPONSIBILITY TO COORDINATE HIS CONSTRUCTION ACTIVITIES WITH THE VARIOUS UTILITY OWNERS. ALL POTENTIAL CONFLICTS SHALL BE INVESTIGATED AND REMEDIAL ACTION TAKEN PRIOR TO INTERRUPTION OF THE CONTRACTOR'S PROGRESS. NO ADDITIONAL COST SHALL BE ADDED TO THE CONTRACT RESULTING FROM UTILITY CONFLICTS.
3. FLAGGERS SHALL BE PRESENT DURING ALL CLOSURE HOURS INCLUDING LUNCH HOUR AND NO ADDITIONAL COMPENSATION SHALL BE ALLOWED.
4. ANY RAISED REFLECTIVE PAVEMENT MARKERS ENCOUNTERED SHALL BE LEFT IN PLACE. ROUTING SHALL BE GAPPED WHERE RAISED REFLECTIVE PAVEMENT MARKERS ARE ENCOUNTERED SO AS TO LEAVE THEM FUNCTIONAL.
5. RESIDENT ENGINEER SHALL DETERMINE EXACT LOCATION WHERE CRACKS ARE TO BE ROUTED AND FILLED.
6. CARE SHALL BE TAKEN TO AVOID ALL PAVEMENT MARKING CENTERLINES. ANY PAVEMENT MARKING CENTERLINES DISTURBED FOR ANY REASON BY THE CONTRACTOR SHALL BE REPAIRED BY THE CONTRACTOR AT NO COST TO THE DEPARTMENT OF TRANSPORTATION.
7. ESTIMATED APPLICATION RATES : 0.33 LB/FT

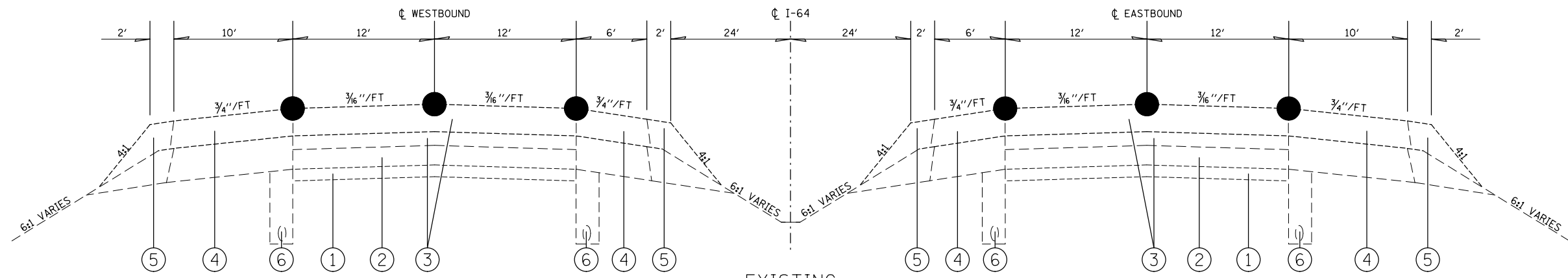
GENERAL NOTES (CONT.)

8. ALL STRUCTURES ARE OMITTED FROM THE CONTRACT.
9. AN AMOUNT OF 139167 FOOT THERMOPLASTIC PAVEMENT MARKING - LINE 6" HAS BEEN ADDED TO THE PLANS TO ACCOUNT FOR CRACKS ROUTED AND SEALED ON THE EDGELINES.
10. AN AMOUNT OF 5568 FOOT SHORT TERM PAVEMENT MARKING FOR DIAGONALS HAS BEEN ADDED TO THE PLANS AND 1838 SQ FT SHORT TERM PAVEMENT MARKING REMOVAL.
11. THE ILLINOIS DEPARTMENT OF TRANSPORTATION STRONGLY ENCOURAGES THE PRIME CONTRACTOR AND THEIR APPROVED SUB-CONTRACTORS TO HIRE MINORITY, WOMEN AND DISADVANTAGED INDIVIDUALS FROM ITS FEDERALLY FUNDED HIGHWAY CONSTRUCTION CAREERS TRAINING PROGRAM (HCCTP) TO HELP MEET WORKFORCE AND TRAINEE GOALS. THIS PROGRAM IS TRAINING MINORITIES, WOMEN AND DISADVANTAGED INDIVIDUALS IN HIGHWAY CONSTRUCTION-RELATED SKILLS, E.G., MATH FOR THE TRADES, JOB READINESS, TECHNICAL SKILLS COURSEWORK (CARPENTRY, CONCRETE FLATWORK, BLUEPRINT READING, SITE PLANS, SITE WORK, TOOLS USE, ETC.) AND OSHA 10 HOUR CERTIFICATION, TO PREPARE THEM FOR A CAREER IN THE HIGHWAY CONSTRUCTION TRADES. GRADUATES ARE WELL-TRAINED AND READY TO BECOME PRODUCTIVE ENTRY-LEVEL CONSTRUCTION WORKERS. PLEASE CONTACT THE DISTRICT 8 EEO OFFICE AT 618-346-3360 AND/OR THE HCCTP COORDINATOR AT 618/874-6528 TO LEARN MORE ABOUT THE PROGRAM AND FOR ASSISTANCE IN MEETING WORKFORCE AND TRAINEE GOALS.

COMMITMENTS

NONE

FILE NAME = USER NAME = DESIGNED - REVISIONS - CHECKED - DATE -				STATE OF ILLINOIS DEPARTMENT OF TRANSPORTATION				INDEX OF SHEETS, HIGHWAY STANDARDS, GENERAL NOTES & COMMITMENTS				*ST. CLAIR, CLINTON F.A.I. SECTION COUNTY TOTAL SHEETS SHEET NO. 64 82-(8,9,10)CJS-1 • 7 2 CONTRACT 76K10 SCALE: NTS SHEET NO. OF SHEETS STA. TO STA. FED. ROAD DIST. NO. ILLINOIS FED. AID PROJECT			
--	--	--	--	---	--	--	--	--	--	--	--	---	--	--	--



EXISTING
TYPICAL TANGENT SECTION FAI ROUTE 64

WESTBOUND

EASTBOUND

STATION 1103+03.00 TO STATION 1364+26.26
 STATION 1367+29.00 TO STATION 1380+25.59
 STATION 1382+97.97 TO STATION 1475+80.00

STATION 1103+29+00 TO STATION 1363+71.57
 STATION 1366+74.31 TO STATION 1379+66.25
 STATION 1382+36.83 TO STATION 1475+80.00

LEGEND

- ① EXISTING STABILIZED SUB-BASE
- ② EXISTING CRPCC PAVEMENT
- ③ EXISTING HMA SURFACE
- ④ EXISTING HMA SHOULDER
- ⑤ EXISTING AGGREGATE TYPE B
- ⑥ EXISTING PIPE UNDERDRAINS
- PROPOSED ROUTING & FILLING

*ST. CLAIR, CLINTON

FILE NAME =	USER NAME = nievesa	DESIGNED -	REVISED -
pw:\IL\084EBIDINTEG\illinois.gov\PWIDOT\Documents\DOT Offices\District 8\Projects\0875\KORWIN\Drawings\CADsheets\D876K10-sh-typical.dwg		DRAWN -	REVISED -
	PLOT SCALE = 250000.0000' / in.	CHECKED -	REVISED -
	PLOT DATE = 12/2/2016	DATE -	REVISED -

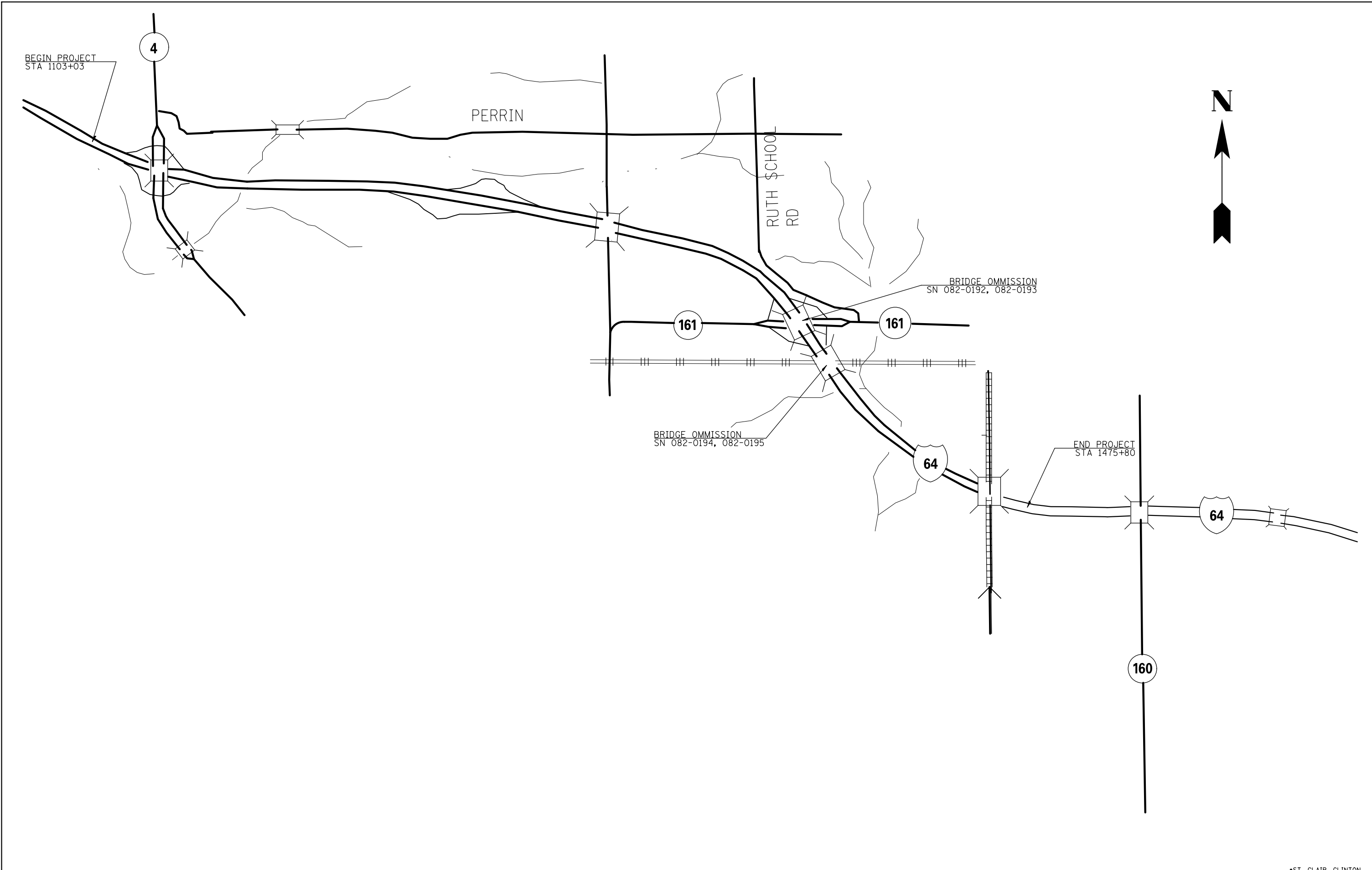
STATE OF ILLINOIS
DEPARTMENT OF TRANSPORTATION

TYPICAL SECTIONS

SCALE: NTS SHEET NO. OF SHEETS STA. TO STA.

F.A.I. RTE.	SECTION	COUNTY	TOTAL SHEETS	SHEET NO.
64	82-(8,9,10)CJ5-1	*	7	4
CONTRACT 76K10				
FED. ROAD DIST. NO. ILLINOIS FED. AID PROJECT				

CRACK SEALING SCHEDULE I-64							
LOCATION				NUMBER OF LONGITUDINAL LANES	CRACK ROUNTING	CRACK FILLING	COMMENT
STATION	TO	STATION	DIRECTION		FOOT	POUND	
1103+29	TO	1361+72	EB	3	77529	25585	CENTERLINE & EDGELINES
1361+72	TO	1363+72	EB	3	600	198	CENTERLINE & EDGELINES
1363+72	TO	1366+74	EB				BRIDGE OMISSION 082-0192
1366+74	TO	1368+74	EB	3	600	198	CENTERLINE & EDGELINES
1368+74	TO	1377+66	EB	3	2676	884	CENTERLINE & EDGELINES
1377+66	TO	1379+66	EB	3	600	198	CENTERLINE & EDGELINES
1379+66	TO	1382+37	EB				BRIDGE OMISSION 082-0194
1382+37	TO	1384+37	EB	3	600	198	CENTERLINE & EDGELINES
1384+37	TO	1458+83	EB	3	22338	7372	CENTERLINE & EDGELINES
1458+83	TO	1461+15	EB	3	696	230	CENTERLINE & EDGELINES
1461+15	TO	1461+27	EB	1	12	4	CONCRETE PATCH OMISSION RIGHT LANE
1461+27	TO	1461+68	EB	3	123	41	CENTERLINE & EDGELINES
1461+68	TO	1461+74	EB	3	18	6	CONCRETE PATCH OMISSION RIGHT LANE
1461+74	TO	1475+80	EB	3	4218	1392	CENTERLINE & EDGELINES
1103+03	TO	1362+26	WB	3	77769	25664	CENTERLINE & EDGELINES
1362+26	TO	1364+26	WB	3	600	198	CENTERLINE & EDGELINES
1364+26	TO	1367+29	WB				BRIDGE OMISSION 082-0193
1367+29	TO	1369+29	WB	3	600	198	CENTERLINE & EDGELINES
1369+29	TO	1378+26	WB	3	2691	889	CENTERLINE & EDGELINES
1378+26	TO	1380+26	WB	3	600	198	CENTERLINE & EDGELINES
1380+26	TO	1382+98	WB				BRIDGE OMISSION 082-0195
1382+98	TO	1384+98	WB	3	600	198	CENTERLINE & EDGELINES
1384+98	TO	1458+83	WB	3	22155	7312	CENTERLINE & EDGELINES
1458+83	TO	1475+80	WB	3	5091	1681	CENTERLINE & EDGELINES
SUB-TOTAL I-64					220116	72644	
15% ALLOWANCE FOR FAILURES					33020	10898	
TOTAL I-64					253136	83542	

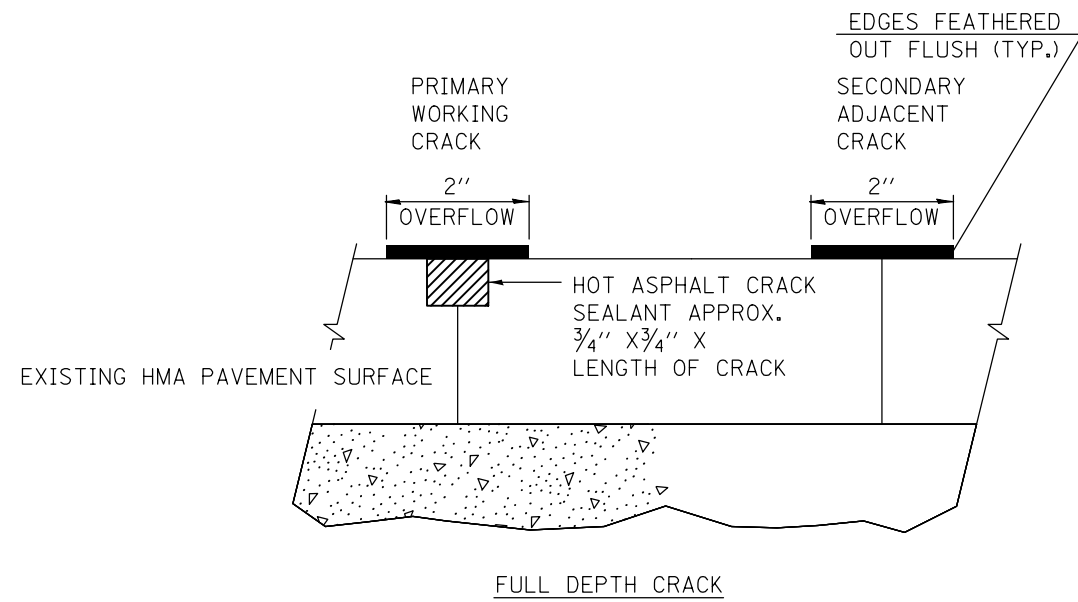


FILE NAME =	USER NAME = nievesa	DESIGNED -	REVISED -
p:\11084EBIDINTEG\illinois.gov\PWIDOT\Documents\IDOT Offices\District 8\Projects\0876\Drawings\CADsheets\0876K10-sht-detail.dwg		CHECKED -	REVISED -
		PLOT SCALE = 99.8718 ' / in.	REVISED -
		PLOT DATE = 12/2/2016	REVISED -

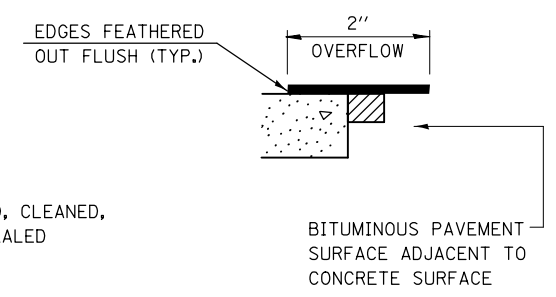
**STATE OF ILLINOIS
DEPARTMENT OF TRANSPORTATION**

LOCATION MAP			
SCALE: NTS	SHEET NO.	OF SHEETS	STA. TO STA.

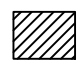
*ST. CLAIR, CLINTON				
F.A.I. RTE.	SECTION	COUNTY	TOTAL SHEETS	SHEET NO.
64	82-(8,9,10)CJ5-1	*	7	6
CONTRACT 76K10				
FED. ROAD DIST. NO.	ILLINOIS	FED. AID PROJECT		



FULL DEPTH CRACK



TRANSVERSE/LONGITUDINAL JOINT

 ROUTED, CLEANED, AND SEALED

BITUMINOUS PAVEMENT SURFACE ADJACENT TO CONCRETE SURFACE

CRACK & JOINT SEALING DETAILS

FILE NAME =	USER NAME = nievesa	DESIGNED -	REVISED -
pw:\IL\084EBIDINTEG.illinois.gov\PIWIDOT\Documents\DOT Offices\District 8\Projects\0876\KRD\Drawings\CADsheets\0876K10-sht-detail.dwg		CHECKED -	REVISED -
	PLOT SCALE = 99.8718 ' / in.	DATE -	REVISED -
	PLOT DATE = 12/2/2016		

**STATE OF ILLINOIS
DEPARTMENT OF TRANSPORTATION**

CRACK & JOINT SEALING DETAIL

SCALE: NTS SHEET NO. OF SHEETS STA. TO STA.

*ST. CLAIR, CLINTON

F.A.I. RTE.	SECTION	COUNTY	TOTAL SHEETS	SHEET NO.
64	82-(8,9,10)CJ5-1	*	7	7
CONTRACT 76K10				
FED. ROAD DIST. NO. ILLINOIS FED. AID PROJECT				