

STATE OF ILLINOIS
DEPARTMENT OF TRANSPORTATION
DIVISION OF HIGHWAYS

**PROPOSED
HIGHWAY PLANS**

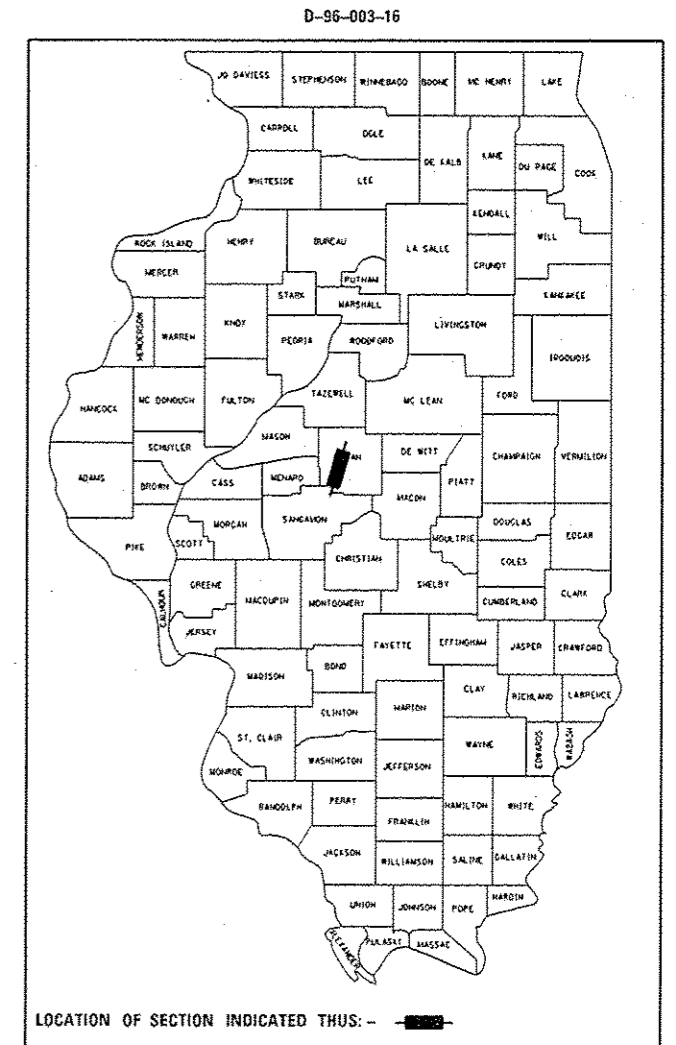
FAI ROUTE 55 (1-55)
SECTION (54-1,2) I-1
CENTERLINE MICRO-SURFACING
LOGAN COUNTY

F.A.I. RTE.	SECTION	COUNTY	TOTAL SHEETS	SHEET NO.
55	(54-1,2) I-1	LOGAN	6	1
		ILLINOIS	CONTRACT NO. 72H96	

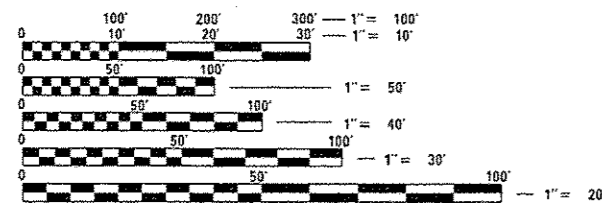
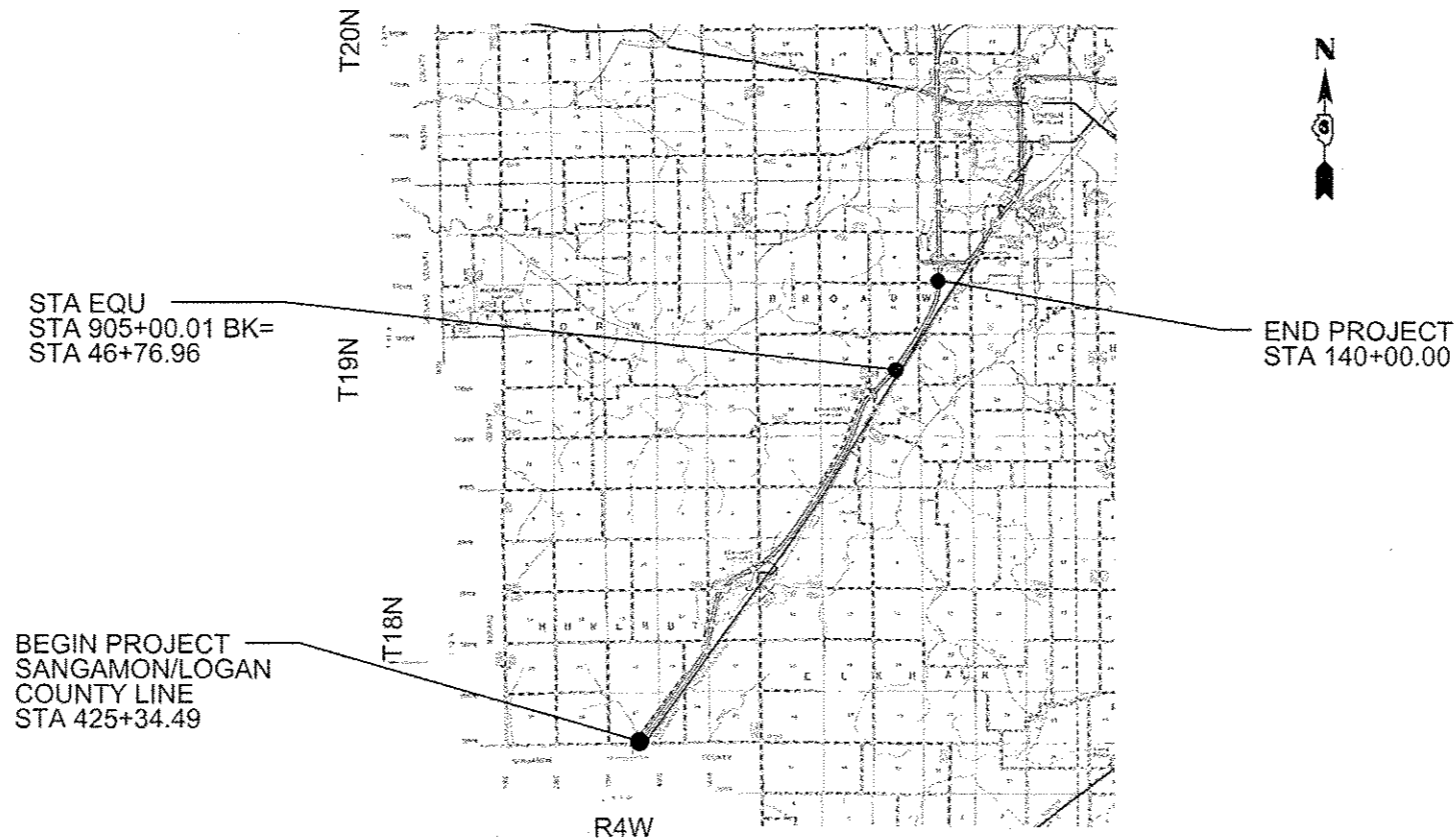
FOR INDEX OF SHEETS, SEE SHEET NO. 2

HIGHWAY CLASSIFICATION

F. A. I. ROUTE 55 (1-55)
ADT: 15,300
SU= 475
ML= 3300



C-96-003-16



FULL SIZE PLANS HAVE BEEN PREPARED USING STANDARD ENGINEERING SCALES. REDUCED SIZED PLANS WILL NOT CONFORM TO STANDARD SCALES. IN MAKING MEASUREMENTS ON REDUCED PLANS, THE ABOVE SCALES MAY BE USED.

J.U.L.I.E.
JOINT UTILITY LOCATION INFORMATION FOR EXCAVATION
1-800-892-0123
OR 811

PROJECT ENGINEER: MIKE IRWIN 217.524.7765
PROJECT MANAGER

CONTRACT NO. 72H96

GROSS LENGTH = 57,288.56 FT. = 10.85 MILE
NET LENGTH = 57,288.56 FT. = 10.85 MILE

STATE OF ILLINOIS
DEPARTMENT OF TRANSPORTATION
DIVISION OF HIGHWAYS

SUBMITTED December 11, 2015

Rog 2015
DEPUTY DIRECTOR OF HIGHWAYS, REGION ENGINEER

Jan 29, 2016
Maurice M. Addis P.E.
ENGINEER OF DESIGN AND ENVIRONMENT

Jan 29, 2016
Omer Osman P.E.
DIRECTOR OF HIGHWAYS, CHIEF ENGINEER

PRINTED BY THE AUTHORITY
OF THE STATE OF ILLINOIS

INDEX OF SHEETS

- 1 COVER SHEET
- 2 GENERAL NOTES
- 3 SUMMARY OF QUANTITIES
- 4 TYPICAL SECTION
- 5 SCHEDULE OF QUANTITIES
- 6 DETAILS

STANDARDS

- 000001-06 STANDARD SYMBOLS, ABBREVIATIONS AND PATTERNS
- 001006 DECIMAL OF AN INCH AND OF A FOOT
- 701101-04 OFF-ROAD OPERATIONS MULTILANE, 15' TO 24' FROM PAVEMENT EDGE
- 701106-02 OFF-ROAD OPERATIONS, MULTILANE, MORE THAN 15' AWAY
- 701400-08 APPROACH TO LANE CLOSURE, FREEWAY/EXPRESSWAY
- 701401-09 LANE CLOSURE, FREEWAY/EXPRESSWAY
- 701406-09 LANE CLOSURE, FREEWAY/EXPRESSWAY, DAY OPERATIONS ONLY
- 701411-09 LANE CLOSURE, MULTILANE AT ENTRANCE OR EXIT RAMP, FOR SPEEDS > 45 MPH
- 701446-06 TWO LANE CLOSURE, FREEWAY/EXPRESSWAY
- 701901-04 TRAFFIC CONTROL DEVICES

GENERAL NOTES

THE ENGINEER WILL BE THE SOLE JUDGE CONCERNING CURING TIME FOR THE MICROSURFACING AND WHEN THE ROADWAY WILL BE OPENED TO TRAFFIC.

ANY REFERENCE TO A STANDARD IN THESE PLANS SHALL BE INTERPRETED TO MEAN THE EDITION AS INDICATED BY THE SUBNUMBER SHOWN IN THE LIST OF STANDARDS OR THE COPY INCLUDED IN THESE PLANS

THE FOLLOWING RATES OF APPLICATION HAVE BEEN USED IN CALCULATING PLAN QUANTITIES:

SHORT TERM PAVEMENT MARKINGS	4	FT /40FT OF APPLICATION
------------------------------	---	-------------------------

THE SHORT TERM PAVEMENT MARKING SHALL BE PLACED 2' OFF CENTERLINE IN DRIVING LANE PRIOR TO COVERING EXISTING LINE..

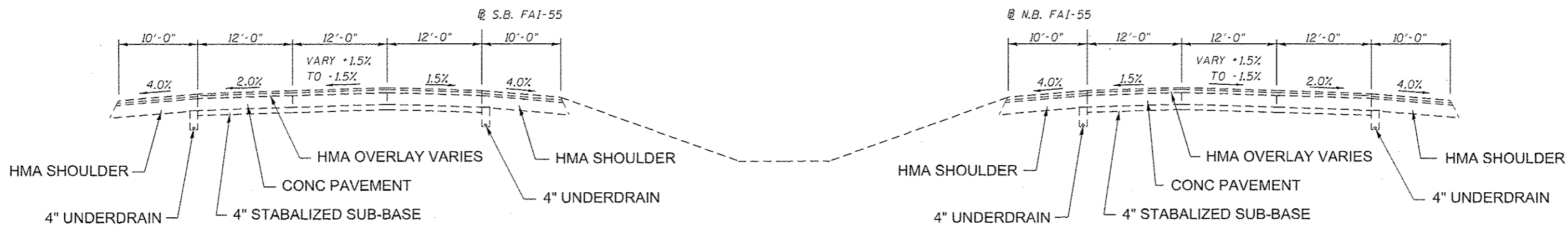
**STATE OF ILLINOIS
DEPARTMENT OF TRANSPORTATION
DIVISION OF HIGHWAYS
DISTRICT 6**

EXAMINED November 24th 20 15
John C. Wynn
ENGINEER OF OPERATIONS

EXAMINED October 30 20 15
Ron Dehamborn
ENGINEER OF PROJECT IMPLEMENTATION

EXAMINED November 5 20 15
Jeff P. Meyer
ENGINEER OF PROGRAM DEVELOPMENT

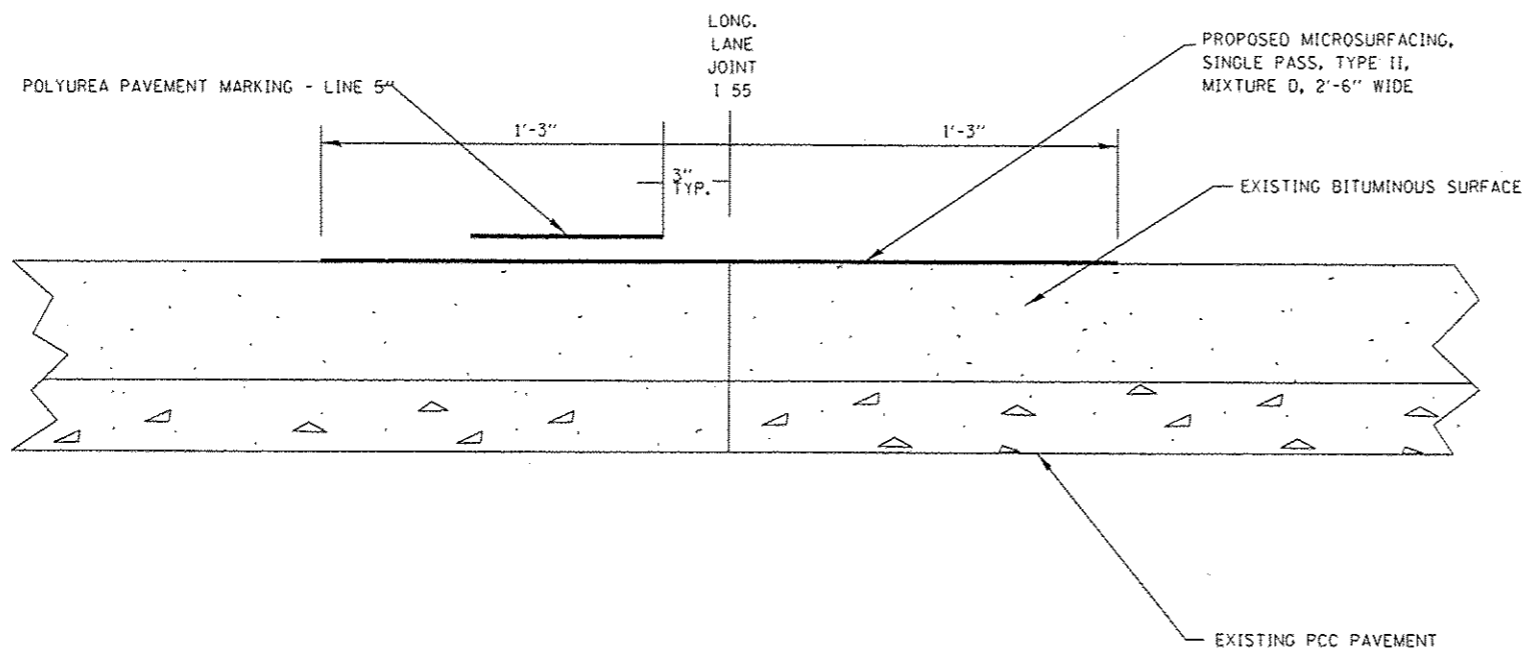
FILE NAME *	USER NAME * bronhasno	DESIGNED -	REVISED -	STATE OF ILLINOIS DEPARTMENT OF TRANSPORTATION	GENERAL NOTES, STANDARDS	F.A.I. RTE.	SECTION	COUNTY	TOTAL SHEETS	SHEET NO.
C:\projects\55 microsurfacing logon\55\ALL SHEETS.dgn	DRAWN -	REVISED -	55			(54-1,2) 1-1	LOGAN	6	2	
PLOT SCALE * 100.0000 / 1"	CHECKED -	REVISED -	SCALE:			SHEET OF SHEETS	STA. TO STA.	CONTRACT NO. 72H96		
Default	DATE -	REVISED -	ILLINOIS FED. AID PROJECT							



TYPICAL SECTION F.A.I. 55

FILE NAME * C:\projects\55 microsurfacing logan\plans\ALL SHEETS.dgn	USER NAME * branham	DESIGNED -	REVISED -	STATE OF ILLINOIS DEPARTMENT OF TRANSPORTATION	EXISTING TYPICAL SECTIONS			F.A.I. RTE.	SECTION	COUNTY	TOTAL SHEETS	SHEET NO.
	PLOT SCALE * 1/8" = 1' - 0"	CHECKED -	REVISED -					S5	(54-1.2) 1-	LOGAN	6	4
Default	PLOT DATE * 11/20/2015	DATE -	REVISED -	SCALE:	SHEET	OF	SHEETS	STA.	TO STA.	ILLINOIS FED. AID PROJECT CONTRACT NO. 72H96		

MAINLINE									
LOCATION STA. TO STA.		LENGTH	SHORT TERM PAVEMENT MARKING	WORK ZONE PAVEMENT MARKING REMOVAL	POLYUREA PAVEMENT MARKING TYPE II, 5"	RAISED REFLECTIVE PAVEMENT MARKER	RAISED REFLECTIVE PAVEMENT MARKER REMOVAL	MICRO-SURFACING SINGLE PASS TYPE II MIXTURE D	BITUMINOUS MATERIALS (PRIME COAT)
		FT	FT	SO FT	FT	EACH	EACH	SO YD	POUNDS
NORTHBOUND									
425+34.49	905+00.01	95931.04	9594	3198	23983	2399	2399	26648	20252
46+76.96	140+00.00	18646.08	1865	622	4662	466	466	5179	3936
RAMP ENT. & EXIT JTS		1200	0	0	0	0	0	334	254
SOUTHBOUND									
905+00.01	425+34.49	95931.04	9594	3198	23983	2399	2399	26648	20252
140+00.00	46+76.96	18646.08	1865	622	4662	466	466	5179	3936
RAMP ENT. & EXIT JTS		1200	0	0	0	0	0	334	254
TOTAL		231554	22918	7640	57290	5730	5730	64322	48884



CENTERLINE SEAL COAT

(NOT DRAWN TO SCALE)

NOTES:

1. JOINTS SHALL BE CLEANED OF LOOSE AND UNSOUND MATERIAL AND PATCHED WITH MIXTURE FOR CRACKS, JOINTS AND FLANGEWAYS PRIOR TO MICROSURFACING
2. "BUMP REMOVAL", "PAVEMENT MARKING REMOVAL", "JOINT & CRACK SEALING", AND "MICROSURFACING RUT FILLING" ARE NOT TO BE REQUIRED FOR THIS CONTRACT.

FILE NAME * C:\projects\55 microsurfacing legen\55	USER NAME * branham	DESIGNED -	REVISED -	STATE OF ILLINOIS DEPARTMENT OF TRANSPORTATION	LONG JOINT PROPOSED MICROSURFACING DETAILS				F.A.I. RTE.	SECTION	COUNTY	TOTAL SHEETS	SHEET NO.
	PLANS ALL SHEETS.dgn	DRAWN -	REVISED -		55	(54-1.2) 1-1	LOGAN	6	6				
Default	PLLOT SCALE * 100.0000 / in.	CHECKED -	REVISED -		SCALE: SHEET OF SHEETS STA. TO STA.				CONTRACT NO. 72H96				
	PLLOT DATE * 12/10/2015	DATE -	REVISED -						ILLINOIS FED. AID PROJECT				