

F.A.U. RTE.	SECTION	COUNTY	TOTAL SHEETS	SHEET NO.
7634	D7 HMA RESURF 2016-1	COLES	6	1
		ILLINOIS	CONTRACT NO. 74732	

STATE OF ILLINOIS
DEPARTMENT OF TRANSPORTATION
DIVISION OF HIGHWAYS

**PROPOSED
HIGHWAY PLANS**

FAU ROUTE 7634 (HEALTH CENTER DRIVE)
SECTION D 7 HMA RESURF 2016-1

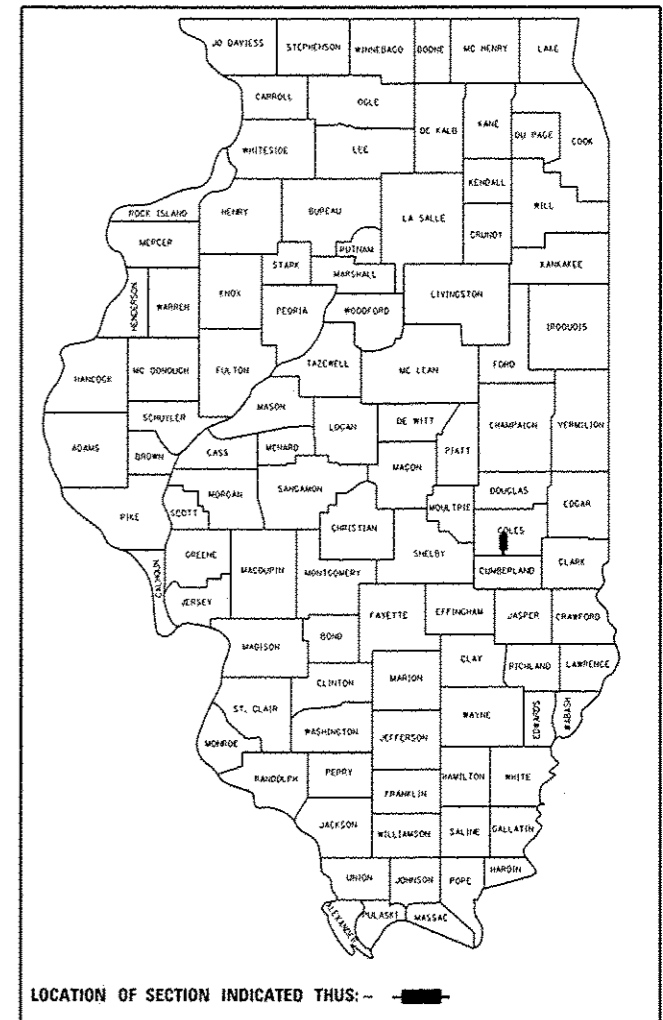
RESURFACING (3P)
COLES COUNTY

C-97-086-15

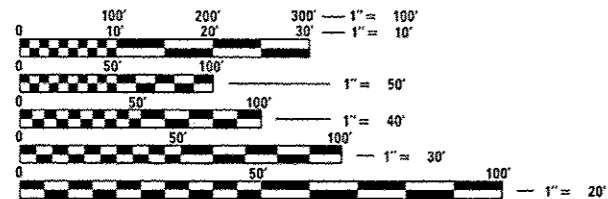
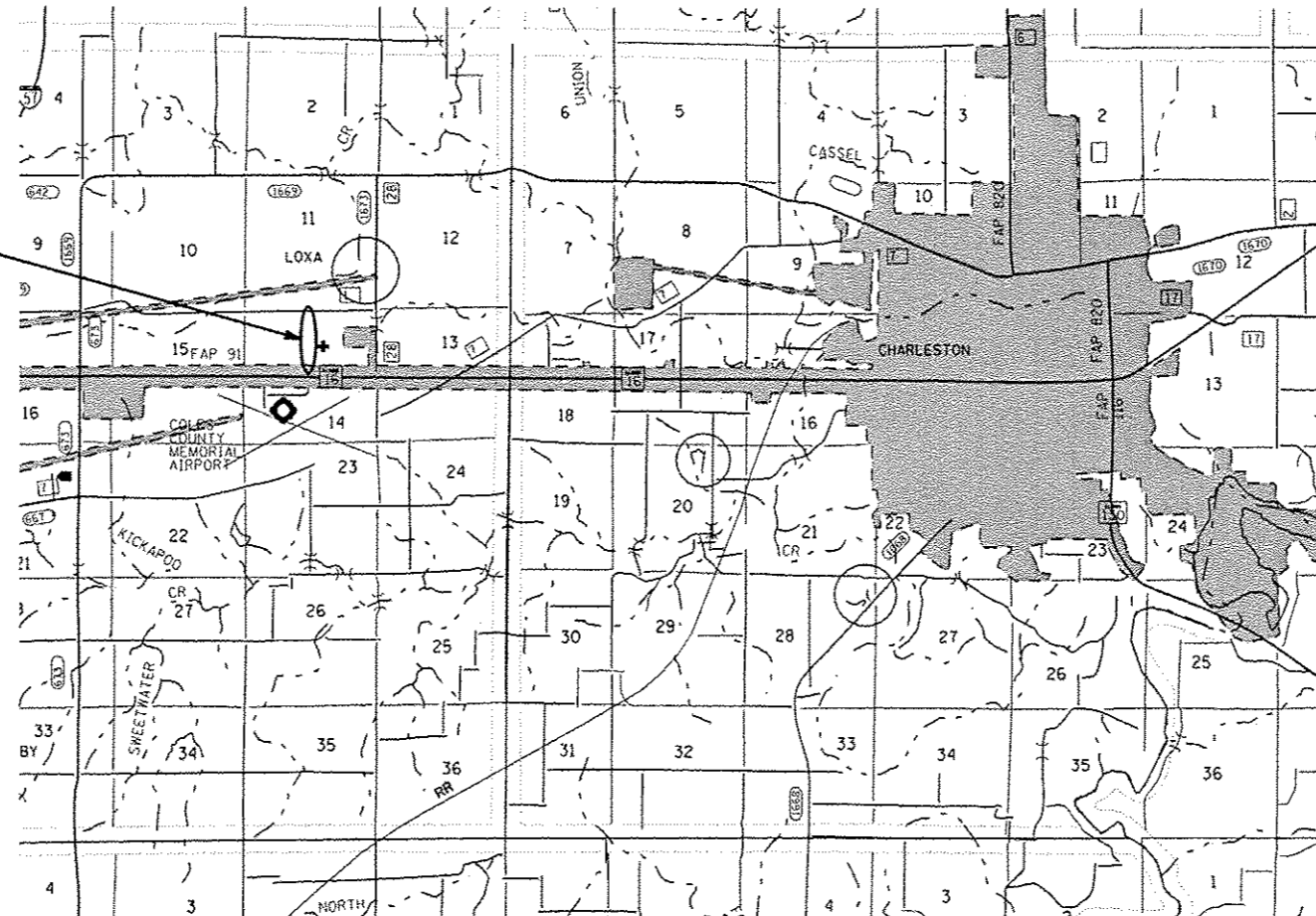
FOR INDEX OF SHEETS, SEE SHEET NO. 2

ADT (2014) = 4500

D-97-038-15



LOCATION OF PROPOSED IMPROVEMENT



FULL SIZE PLANS HAVE BEEN PREPARED USING STANDARD ENGINEERING SCALES. REDUCED SIZED PLANS WILL NOT CONFORM TO STANDARD SCALES. IN MAKING MEASUREMENTS ON REDUCED PLANS, THE ABOVE SCALES MAY BE USED.

J.U.L.I.E.
JOINT UTILITY LOCATION INFORMATION FOR EXCAVATION
1-800-892-0123
OR 811

PROJECT ENGINEER MARK DAUGHERTY
PROJECT MANAGER SOLOMON DZAKUMA

GROSS LENGTH = 2477 FT. = 0.47 MILE
NET LENGTH = 2477 FT. = 0.47 MILE

CONTRACT NO. 74732

STATE OF ILLINOIS
DEPARTMENT OF TRANSPORTATION
DIVISION OF HIGHWAYS

SUBMITTED *November 20 15*

Core L. D. [Signature]
DEPUTY DIRECTOR OF HIGHWAYS, REGION ENGINEER

Jan 29 20 16
Maureen M. Addis PE
ENGINEER OF DESIGN AND ENVIRONMENT

Jan 29 20 16
Omer Osman PE
DIRECTOR OF HIGHWAYS, CHIEF ENGINEER

**PRINTED BY THE AUTHORITY
OF THE STATE OF ILLINOIS**

GENERAL NOTES

THIS SECTION SHALL BE CONSTRUCTED IN ACCORDANCE WITH THE PLANS; THE "STANDARD SPECIFICATIONS FOR ROAD AND BRIDGE CONSTRUCTION", ADOPTED JANUARY 1, 2012; THE "SUPPLEMENTAL SPECIFICATIONS AND RECURRING SPECIAL PROVISIONS" INDICATED ON THE CHECK SHEET, AND THE SPECIAL PROVISIONS INCLUDED IN THIS PROPOSAL.

THE WORK INCLUDED IN THIS SECTION CONSISTS OF OVERLAYING THE EXISTING PAVEMENT WITH HOT-MIX ASPHALT COMPOSED OF 3/4" LEVELING BINDER AND 1 1/2" SURFACE COURSE, PLACEMENT OF AGGREGATE SHOULDERS, PATCHING, PAVEMENT MARKING AND ANY OTHER WORK NECESSARY TO COMPLETE THE SECTION. THE SECTION IS LOCATED BETWEEN COUNTY ROAD 800 N AND ILLINOIS ROUTE 16, IN COLES COUNTY.

THE PAVEMENT SHALL BE CLEANED ACCORDING TO ARTICLE 406.05 BUT WILL NOT BE MILLED. PRIME COAT SHALL BE APPLIED AS SPECIFIED IN SECTION 406 OF THE STANDARD SPECIFICATIONS. FOG COAT SHALL BE APPLIED BETWEEN HOT-MIX ASPHALT LIFTS. TEMPORARY TAPE SHALL BE USED ON ALL SURFACES FOR SHORT-TERM PAVEMENT MARKING.

THE TOTAL QUANTITY OF THERMOPLASTIC PAVEMENT MARKING - LINE 4" CONSISTS OF 619 FEET OF YELLOW AND 4,954 FEET OF WHITE.

THE CONTRACTOR SHALL PROVIDE INTERNET ACCESS TO THE HOT-MIX ASPHALT PLANT QUALITY CONTROL LAB SO THAT HOT-MIX ASPHALT PLANT REPORTS CAN BE E-MAILED TO THE DISTRICT HEADQUARTERS. THIS WORK SHALL BE INCLUDED IN THE COST OF HOT-MIX ASPHALT ITEMS.

AGGREGATE FOR AGGREGATE SHOULDERS SHALL BE CRUSHED STONE, CRUSHED CONCRETE OR RAP.

THE FOLLOWING RATES OF APPLICATION HAVE BEEN USED IN CALCULATING PLAN QUANTITIES:

HOT MIX ASPHALT	112 LB/SQ YD/IN
BITUMINOUS MATERIALS PRIME COAT	0.05 LB/SQ FT
FOG COAT BETWEEN HMA LIFTS	0.025 LB/SQ FT

THE FOLLOWING MIXTURE REQUIREMENTS ARE APPLICABLE TO THIS PROJECT:

APPLICATION	PG GRADE	DESIGN AIR VOIDS	MIXTURE COMPOSITION	FRICTION AGGREGATE	MIXTURE USE
LEVELING BINDER (MM) N70	PG 64-22	4.0% @ N=70	IL - 9.5	N/A	HMA LEVELING BINDER (MM) 3/4"
HMA SURFACE COURSE, MIX "C", N70	PG 64-22	4.0% @ N=70	IL - 9.5	MIXTURE C	SURFACE COURSE (1 1/2")
HMA SURFACE COURSE, MIX "C", N70	PG 64-22	4.0% @ N=70	IL - 9.5	MIXTURE C	INCIDENTAL HMA SURFACE COURSE
HMA ASPHALT BINDER COURSE, IL-19.0, N70	PG 64-22	4.0% @ N=70	IL - 19.0	N/A	PAVEMENT PATCHING

INDEX OF SHEETS

SHEET NO	TITLE
1	COVER SHEET
2	GENERAL NOTES, INDEX OF SHEETS
3	SUMMARY OF QUANTITIES
4	TYPICAL SECTIONS
5	RESURFACING SCHEDULE
6	PLAN SHEET

THE FOLLOWING STANDARDS ARE A PART OF THESE PLANS AND ARE INCLUDED FOLLOWING THE LAST NUMBERED SHEET OF THE PLANS.

442201-03	CLASS C AND D PATCHES
701201-04	LANE CLOSURE, 2L, 2W, DAY ONLY, FOR SPEEDS >= 45 MPH
701301-04	LANE CLOSURE, 2L, 2W, SHORT TIME OPERATIONS
701306-03	LANE CLOSURE, 2L, 2W, SLOW MOVING OPERATIONS DAY ONLY, FOR SPEEDS >= 45 MPH
701311-03	LANE CLOSURE, 2L, 2W, MOVING OPERATIONS - DAY ONLY
701901-04	TRAFFIC CONTROL DEVICES
780001-05	TYPICAL PAVEMENT MARKINGS

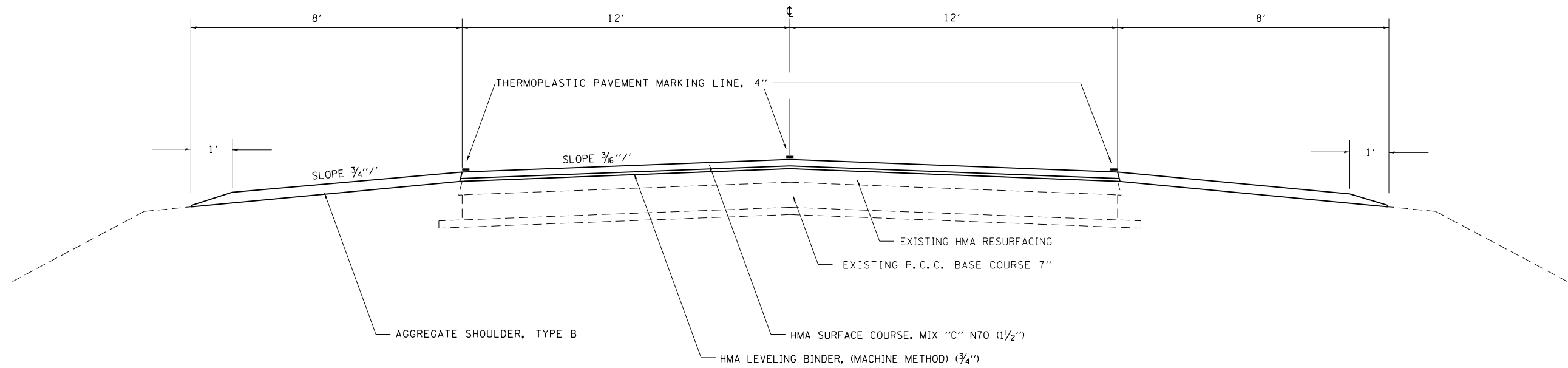
FILE NAME =	USER NAME = steffannk	DESIGNED -	REVISED -	STATE OF ILLINOIS DEPARTMENT OF TRANSPORTATION	INDEX OF SHEETS, LIST OF STANDARDS, GENERAL NOTES	F.A.U. RTE.	SECTION	COUNTY	TOTAL SHEETS	SHEET NO.
pw\l\084EB10\TEG\Illinois.gov\PIV007\No	Documents\DOT Offices\District 7\Projects\74750\BANS\CA05\0774752\shtrgennote	CHECKED -	REVISED -			7634	D7 HMA RESURF 2016-1	COLES	6	2
	PLOT SCALE = 1/8" = 1' / in.					CONTRACT NO. 74732				
Default	PLOT DATE = 11/20/2015	DATE -	REVISED -			ILLINOIS FED. AID PROJECT				
				SCALE:	SHEET OF SHEETS	STA.	TO STA.			

SUMMARY OF QUANTITIES			TOTAL QUANTITIES	CONSTRUCTION TYPE CODE		
CODE NO	ITEM	UNIT		0005 100% STATE		
40600275	BITUMINOUS MATERIALS (PRIME COAT)	POUND	4490	4490		
40600635	LEVELING BINDER (MACHINE METHOD), N70	TON	271	271		
40600982	HOT-MIX ASPHALT SURFACE REMOVAL - BUTT JOINT	SO YD	497	497		
40600985	PORTLAND CEMENT CONCRETE SURFACE REMOVAL - BUTT JOINT	SO YD	93	93		
40603315	HOT-MIX ASPHALT SURFACE COURSE, MIX "C", N70	TON	559	559		
40800050	INCIDENTAL HOT-MIX ASPHALT SURFACING	TON	37	37		
44201765	CLASS D PATCHES, TYPE II, 10 INCH	SO YD	120	120		
48101200	AGGREGATE SHOULDERS, TYPE B	TON	545	545		
67100100	MOBILIZATION	LSUM	1	1		
70100450	TRAFFIC CONTROL AND PROTECTION, STANDARD 701201	LSUM	1	1		
70100460	TRAFFIC CONTROL AND PROTECTION, STANDARD 701306	LSUM	1	1		
70300100	SHORT TERM PAVEMENT MARKING	FOOT	744	744		

SUMMARY OF QUANTITIES			TOTAL QUANTITIES	CONSTRUCTION TYPE CODE		
CODE NO	ITEM	UNIT		0005 100% STATE		
70300220	TEMPORARY PAVEMENT MARKING - LINE 4"	FOOT	5573	5573		
70301000	WORK ZONE PAVEMENT MARKING REMOVAL	SO FT	83	83		
* 78000200	THERMOPLASTIC PAVEMENT MARKING - LINE 4"	FOOT	5573	5573		
X7015005	CHANGEABLE MESSAGE SIGN	CAL DA	28	28		
* X7830070	GROOVING FOR RECESSED PAVEMENT MARKING 5"	FOOT	5573	5573		

* SPECIALTY ITEM

FILE NAME =	USER NAME = staffennk	DESIGNED -	REVISED -	STATE OF ILLINOIS DEPARTMENT OF TRANSPORTATION	SUMMARY OF QUANTITIES	F.A.U. RTE.	SECTION	COUNTY	TOTAL SHEETS	SHEET NO.
g:\12084810\INTEG\11\spox.gov\PI001\00	uments\DOT Offices\District 7\Projects\747	DBANN\COB\spox\10774732-sht-500.dgn	REVISED -			7634	D7 HMA RESURF 2016-1	COLES	6	3
Default	PLOT SCALE = 100.0000 1" = 100'	CHECKED -	REVISED -			CONTRACT NO. 74732				
	PLOT DATE = 11/25/2015	DATE -	REVISED -			SCALE:	SHEET OF SHEETS STA. TO STA.	ILLINOIS FED. AID PROJECT		



HOSPITAL ROAD

STA 11+64 TO STA 35+51

FILE NAME =	USER NAME = steffenmk	DESIGNED -	REVISED -
pw:\IL\084EBIDINTEG.illinois.gov\PWIDOT\Documents\IDOT Offices\District 7\Projects\74732\Drawings\CAD\Sheets\0774732-sht-typical		DRAWN -	REVISED -
Default	PLOT SCALE = 100.0000' / 1"	CHECKED -	REVISED -
	PLOT DATE = 11/25/2015	DATE -	REVISED -

**STATE OF ILLINOIS
DEPARTMENT OF TRANSPORTATION**

TYPICAL SECTION

SCALE: SHEET OF SHEETS STA. TO STA.

F.A.U. RTE.	SECTION	COUNTY	TOTAL SHEETS	SHEET NO.
7634	D7 HMA RESURF 2016-1	COLES	6	4
CONTRACT NO. 74732			ILLINOIS FED. AID PROJECT	

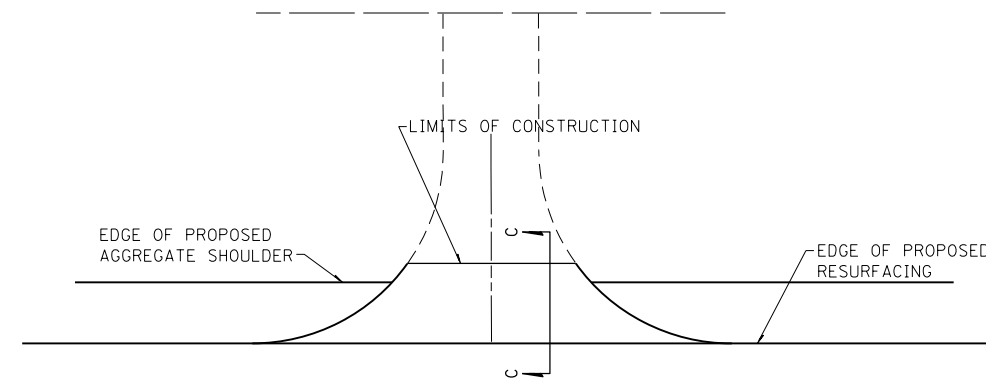
BUTT JOINT SCHEDULE

LOCATION	PCC SURFACE REMOVAL - BUTT JOINT	HMA SURFACE REMOVAL - BUTT JOINT
STA 11+19 TO 11+49 STA 35+66 TO 35+96 ENTRANCES	93 S. Y.	91 S. Y. 406 S. Y.
TOTALS	93 S. Y.	497 S. Y.

RESURFACING SCHEDULE

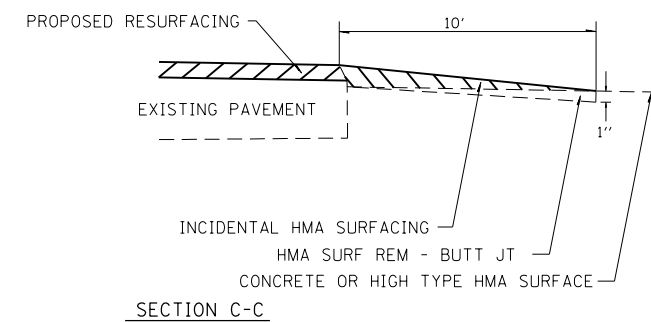
STATION TO STATION	LENGTH FOOT	AVERAGE PAVEMENT WIDTH FOOT	AREA SQ YD	BITUMINOUS MATERIALS (PRIME COAT) POUND	BITUMINOUS MATERIALS (PRIME FOG COAT) POUND	HOT-MIX ASPHALT SURFACE COURSE, MIX "C", N70 TON	LEVELLING BINDER (MACHINE METHOD), N70 TON	AGGREGATE WEDGE SHOULDERS, TYPE B TON
11+19.00 TO 11+64.00	45.0	28.5	142.5	64.1	32.1	12.0	1.8	9.9
11+64.00 TO 35+51.00	2387.0	24.0	6365.3	2864.4	1432.2	534.7	267.3	525.2
35+51.00 TO 35+96.00	45.0	28.5	142.5	64.1	32.1	12.0	1.7	9.9
TOTALS	2477.0		6650.0	2993.0	1496.0	559.0	271.0	545.0

COMMERCIAL ENTRANCE



ENTRANCE SCHEDULE

SIDE	STATION	TYPE	INCIDENTAL HMA SURFACING
			TON
RT	18+16	CE	8.9
RT	24+35	CE	6.1
RT	25+22	CE	6.1
RT	27+12	CE	6.4
RT	30+00	CE	6.5
TOTAL			34



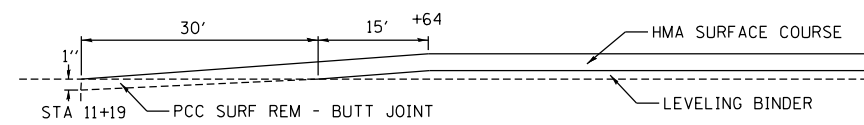
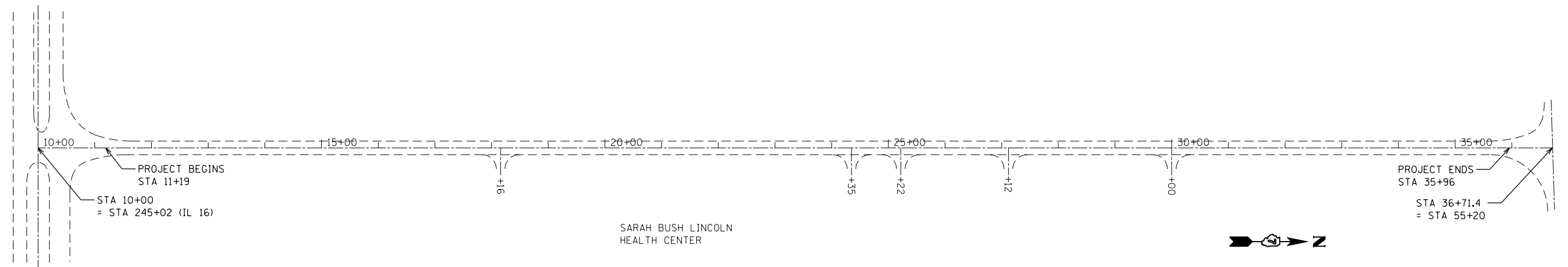
FILE NAME =	USER NAME = steffenmk	DESIGNED -	REVISED -
pw:\11084EBIDINTEG.illinois.gov\PI\DOT\Documents\DOT Offices\District 7\Projects\7472\Drawings\CAD\Sheets\0774732-sht-schedule		DRAWN -	REVISED -
Default	PLOT SCALE = 100.0000' / in.	CHECKED -	REVISED -
	PLOT DATE = 11/25/2015	DATE -	REVISED -

STATE OF ILLINOIS
DEPARTMENT OF TRANSPORTATION

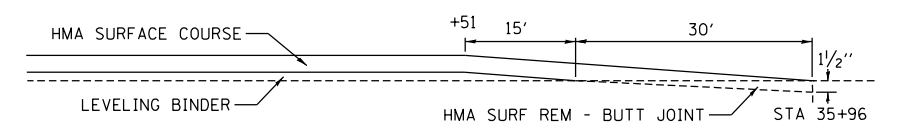
SCHEDULES

SCALE: SHEET OF SHEETS STA. TO STA.

F.A.U. RTE.	SECTION	COUNTY	TOTAL SHEETS	SHEET NO.
7634	D7 HMA RESURF 2016-1	COLES	6	5
ILLINOIS FED. AID PROJECT			CONTRACT NO. 74732	



BUTT JOINT DETAIL



BUTT JOINT DETAIL

FILE NAME =	USER NAME = steffenmk	DESIGNED -	REVISED -	STATE OF ILLINOIS DEPARTMENT OF TRANSPORTATION	PLAN SHEET			F.A.U. R.T.E.	SECTION	COUNTY	TOTAL SHEETS	SHEET NO.
pw:\IL\084EBIDINTEG.illinois.gov\PWIDOT\Documents\IDOT Offices\District 7\Projects\74732\Drawings\CAD\Sheets\0774732-sht-plan.dgn		CHECKED -	REVISED -		7634	D7 HMA RESURF 2016-1	COLES	6	6			
Default	PLOT SCALE = 200.0000' / in.	DATE -	REVISED -		SCALE: SHEET OF SHEETS STA. TO STA.			CONTRACT NO. 74732				
	PLOT DATE = 11/25/2015				ILLINOIS FED. AID PROJECT							