

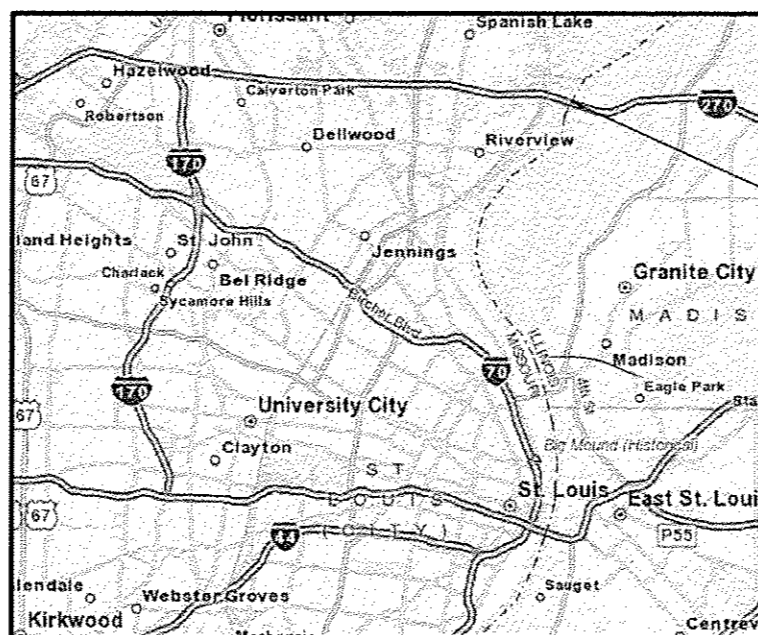
STATE OF ILLINOIS
DEPARTMENT OF TRANSPORTATION
DIVISION OF HIGHWAYS
PROPOSED
HIGHWAY PLANS

FAI ROUTE 270 (I-270)
SECTION 60B-1DS-1
PROJECT ACNHPP-0270 (405)
BRIDGE DECK SEAL
MADISON COUNTY

C-98-001-15

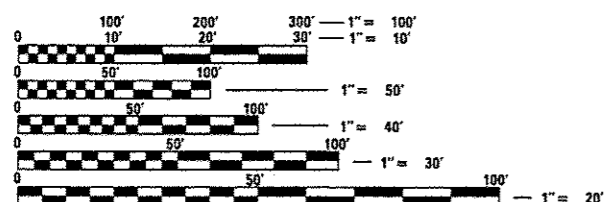
FAI RTE.	SECTION	COUNTY	TOTAL SHEETS	SHEET NO.
270	60B-1DS-1	MADISON	13	1
		ILLINOIS	CONTRACT NO. 76H48	

- INDEX OF SHEETS**
- 1 COVER SHEET
 - 2 HIGHWAY STDS/GENERAL NOTES/COMMITMENTS
 - 3 SUMMARY OF QUANTITIES
 - 4 TYPICAL SECTIONS
 - 5 CHANGEABLE MESSAGE SIGNS LOCATION SKETCH
 - 6-12 TRAFFIC CONTROL PLANS
 - 13 STRUCTURE PLAN SHEET



PROJECT LOCATION
 STATION 780+00.25
 21 SPAN STRUCTURE CONSISTING OF
 2 CONCRETE DECKS SUPPORTED BY
 CONTINUOUS STEEL PLATE GIRDERS
 AND REINFORCED CONCRETE SHAFTS
 FOUNDED ON SPREAD FOOTING.
 CARRIES I-270 OVER MISSISSIPPI
 RIVER; S.N. 060-0035
 5411' BK TO BK OF ABUTMENT
 LATITUDE - 38.76434078
 LONGITUDE - -90.17220184

LOCATION MAP
(NOT TO SCALE)



FULL SIZE PLANS HAVE BEEN PREPARED USING STANDARD ENGINEERING SCALES. REDUCED SIZED PLANS WILL NOT CONFORM TO STANDARD SCALES. IN MAKING MEASUREMENTS ON REDUCED PLANS, THE ABOVE SCALES MAY BE USED.

J.U.L.I.E.
 JOINT UTILITY LOCATION INFORMATION FOR EXCAVATION
 1-800-892-0123
 OR 811

PROJECT ENGINEER: HERVE GELIN (618)-346-3179
PROJECT MANAGER: BILLIE OWEN (618)-346-3209
CONTRACT NO. 76H48

FUNCTIONAL CLASSIFICATION
 INTERSTATE

GROSS LENGTH = 5411 FT. = 1.02 MILE
 NET LENGTH = 5411 FT. = 1.02 MILE

ADT
 2013 = 52,350 (ESTIMATED)
 SU = 2.39% MU = 14.15%

STATE OF ILLINOIS
 DEPARTMENT OF TRANSPORTATION
 DIVISION OF HIGHWAYS

SUBMITTED *Dec. 8 2015*
Jeffrey Z. Ka...
 DEPUTY DIRECTOR OF HIGHWAYS, REGION 5 ENGINEER

Jan 29 2016
Muhammad M. Addis, P.E.
 ENGINEER OF DESIGN AND ENVIRONMENT

Jan 29 2016
Omer Osman, P.E.
 DIRECTOR OF HIGHWAYS, CHIEF ENGINEER

**PRINTED BY THE AUTHORITY
 OF THE STATE OF ILLINOIS**

HIGHWAY STANDARDS

000001-06
001006
701400-08
701401-09
701411-09
701428
701901-04

COMMITMENTS

NONE

GENERAL NOTES

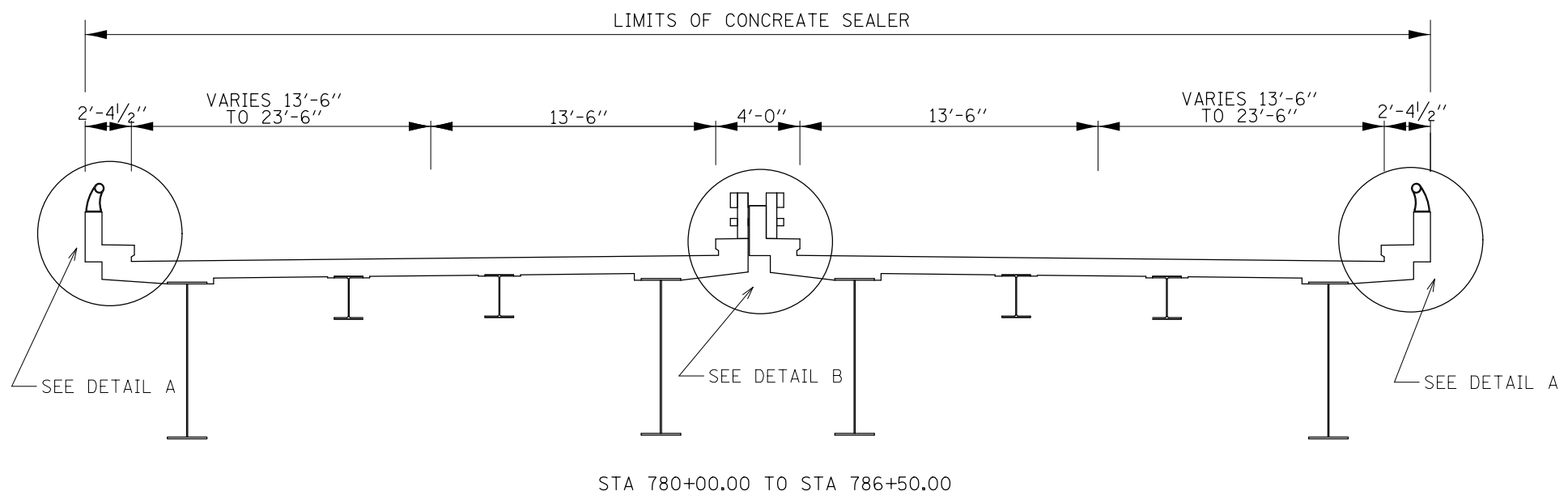
1. PLAN DIMENSIONS AND DETAILS RELATIVE TO THE EXISTING STRUCTURE AND ROADWAY HAVE BEEN TAKEN FROM THE EXISTING PLANS AND ARE SUBJECT TO CONSTRUCTION VARIATIONS. IT SHALL BE THE RESPONSIBILITY OF THE CONTRACTOR TO VERIFY SUCH DIMENSIONS AND DETAILS IN THE FIELD AND MAKE THE NECESSARY APPROVED ADJUSTMENTS PRIOR TO CONSTRUCTION OR ORDERING OF MATERIALS. SUCH VARIATIONS SHALL NOT BE CAUSE FOR ADDITIONAL COMPENSATION FOR A CHANGE IN THE SCOPE OF WORK. HOWEVER, THE CONTRACTOR WILL BE PAID FOR THE QUANTITY ACTUALLY FURNISHED AT THE UNIT PRICE BID FOR THE WORK.
2. ILLINOIS STATE LAW REQUIRES A 48-HOUR NOTICE BE GIVEN TO ALL UTILITIES WITHIN THE PROJECT AREA BEFORE DIGGING. FIELD MARKING OF FACILITIES MAY BE OBTAINED BY CONTACTING J.U.L.I.E. OR FOR NON-MEMBERS, THE UTILITY COMPANY DIRECTLY. AGENCIES KNOW TO HAVE FACILITIES WITH THE PROJECT ARE AS FOLLOWS:
 - AT&T ILLINOIS
 - ILLINOIS AMERICAN WATER COMPANY

MEMBERS OF J.U.L.I.E. CALL TOLL FREE (800)829-0123 OR 811 AND ARE INDICATED BY*. NON-J.U.L.I.E. MEMBERS MUST BE NOTIFIED INDIVIDUALLY.
3. THE DEPARTMENT STRONGLY ENCOURAGES THE PRIME CONTRACTOR AND THEIR APPROVED SUB-CONTRACTOR TO HIRE MINORITIES, WOMEN, AND DISADVANTAGED INDIVIDUALS FROM ITS FEDERALLY FUNDED HIGHWAY CONSTRUCTION CAREERS TRAINING PROGRAM (HCCTP) TO HELP MEET WORK FORCE AND TRAINEE GOALS. THIS PROGRAM IS TRAINING MINORITIES, WOMEN, AND DISADVANTAGED INDIVIDUALS IN HIGHWAY CONSTRUCTION-RELATED SKILLS, E.G., MATH FOR THE TRADES, JOB READINESS, TECHNICAL SKILLS COURSE WORK (CARPENTRY, CONCRETE FLAT WORK, BLUEPRINT READING, SITE WORK, TOOL USE, ETC.) AND OSHA 10 HOUR CERTIFICATION, TO PREPARE THEM FOR A CAREER IN THE HIGHWAY CONSTRUCTION TRADES. GRADUATES ARE WELL-TRAINED AND READY TO BECOME PRODUCTIVE, ENTRY-LEVEL CONSTRUCTION WORKERS. CONTACT DISTRICT 8 EEO OFFICE AT 618-346-3360 AND/OR THE HCCTP COORDINATOR AT 618-874-6528 TO LEARN MORE ABOUT THE PROGRAM AND FOR ASSISTANCE IN MEETING WORKFORCE AND TRAINEE GOALS.
4. THE CONTRACTOR SHALL NOTIFY THE ENGINEER FOURTEEN (14) DAYS PRIOR TO LANE CLOSURES. IN ADDITION, THE CONTRACTOR SHALL NOTIFY THE ENGINEER AND THE LOCAL MODOT MAINTENANCE TEAM AT LEAST SEVEN (7) DAYS PRIOR TO BEGINNING AND SETTING UP TRAFFIC CONTROL DEVICES.

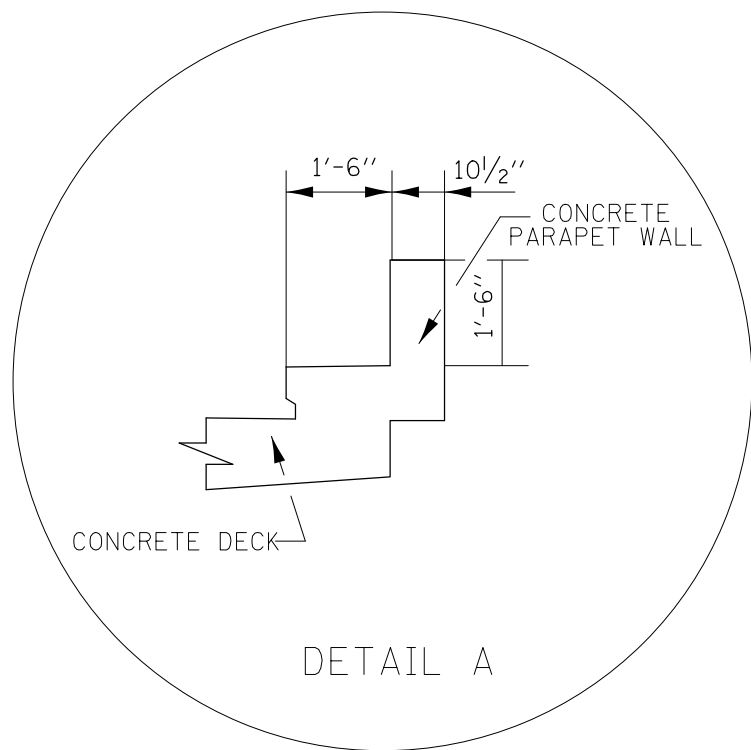
FILE NAME *	USER NAME * MennTH	DESIGNED -	REVISED -	STATE OF ILLINOIS DEPARTMENT OF TRANSPORTATION	HIGHWAY STANDARDS, GENERAL NOTES COMMITMENTS	F.A.I. RTE.	SECTION	COUNTY	TOTAL SHEETS	SHEET NO.
p:\11884EBID\INTEG\Illinois.gov\PIDOT\Documents\1007 Offices\Districts\B\Projects\007-084\990\06\640\sheet\0878H48-shr-plan	OB4W990\06\640\sheet\0878H48-shr-plan	CHECKED -	REVISED -			270	608-10S-1	MADISON	13	2
PLOT SCALE * 100.0000' / 1" =	DATE -	DATE -	REVISED -			CONTRACT NO. 76H48				
PLOT DATE * 12/31/2015	DATE -	DATE -	REVISED -			SCALE:	SHEET NO. 1 OF 1 SHEETS	STA.	TO STA.	FED. ROAD DIST. NO.

ILLINOIS DEPARTMENT OF TRANSPORTATION			TOTAL QUANTITIES	MADISON CO	100% MISSOURI
CODE NO	ITEM	UNIT		90% FED 10% STATE BRIDGE SN 060-0035 0014 URBAN	0014 URBAN
67100100	MOBILIZATION	L SUM	1	0.5	0.5
70100420	TRAFFIC CONTOL AND PROTECTION, STANDARD 701411	EACH	2	1	1
70100800	TRAFFIC CONTOL AND PROTECTION, STANDARD 701401	L SUM	1	0.5	0.5
70106800	CHANGEABLE MESSAGE SIGN	CAL MO	3	1.5	1.5
70200100	NIGHTTIME WORK ZONE LIGHTING	L SUM	1	0.5	0.5
X5870015	BRIDGE DECK CONCRETE SEALER	SQ FT	377540	188,770	188,770
X7010410	SPEED DISPLAY TRAILER	CAL MO	1	0.5	0.5
X3000001	RRPM PROTECTION	EACH	272	136	136

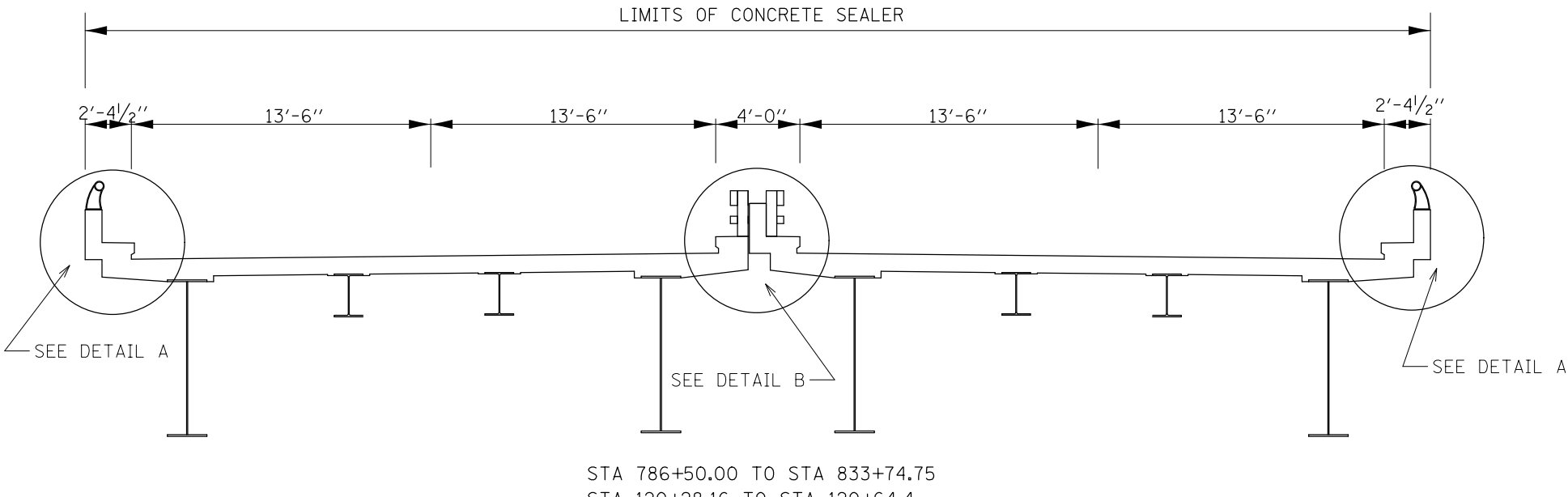
8



STA 780+00.00 TO STA 786+50.00

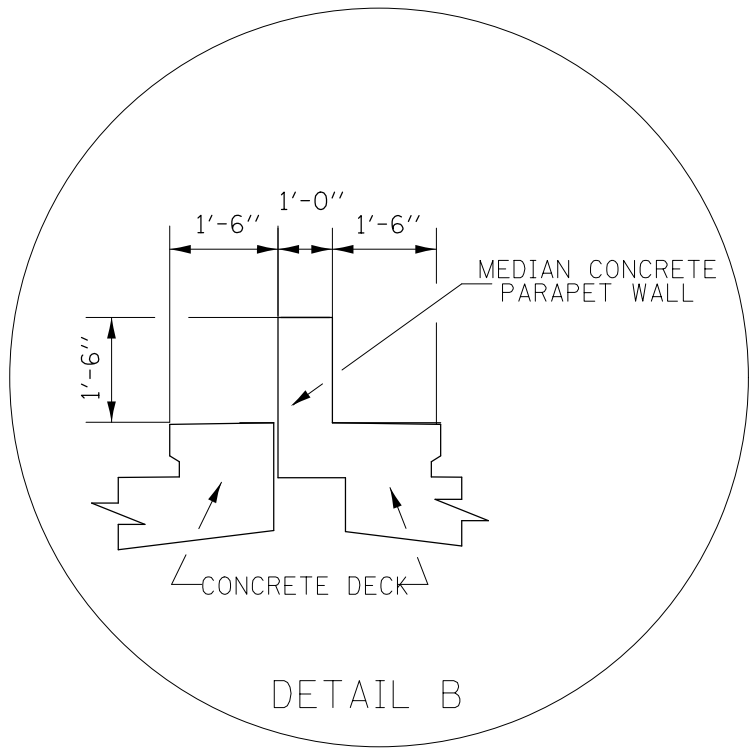


DETAIL A



STA 786+50.00 TO STA 833+74.75
 STA 120+28.16 TO STA 120+64.4

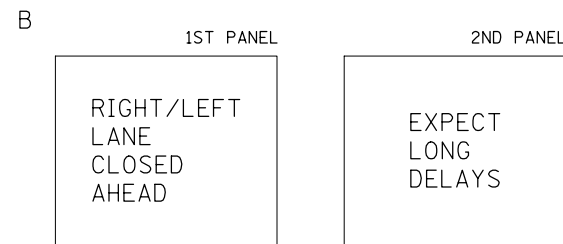
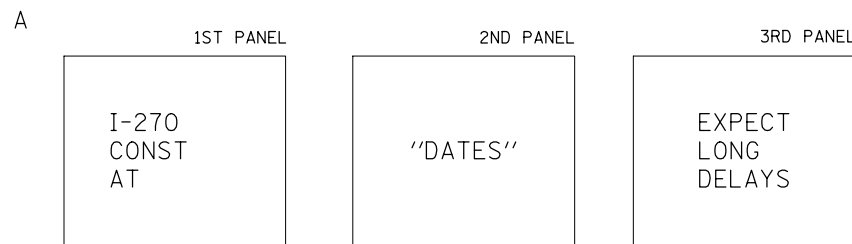
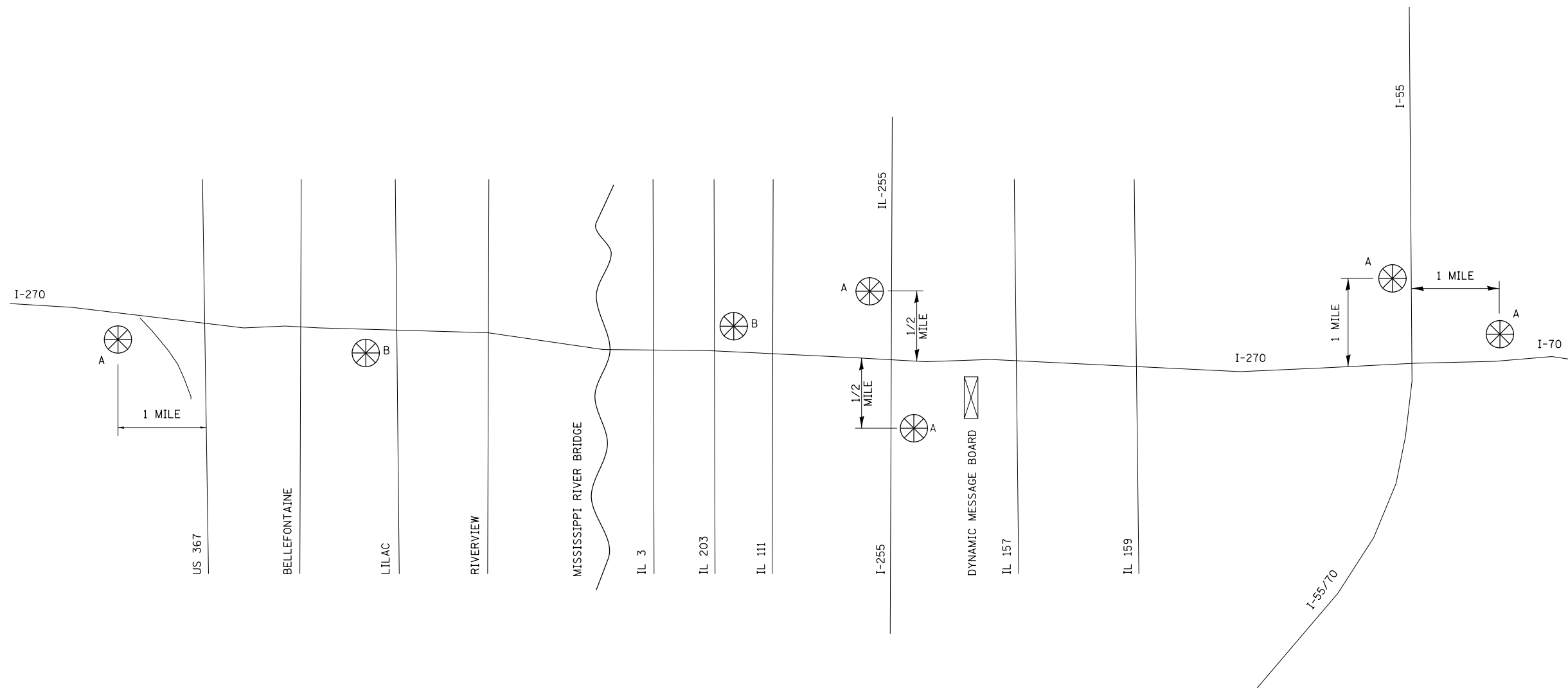
STATION EQUATION: STA 833+74.75 = STA 120+28.16



DETAIL B

FILE NAME =	USER NAME = MannTM	DESIGNED -	REVISED -	STATE OF ILLINOIS DEPARTMENT OF TRANSPORTATION	TYPICAL SECTION			F.A.I. RTE.	SECTION	COUNTY	TOTAL SHEETS	SHEET NO.
pw:\IL\084EBIDINTEG.illinois.gov\PIDOT\Documents\IDOT Offices\District 8\Projects\0875\DRAWING\DATA\EA0sheets\0875H48-sht-plan.dwg	PLLOT SCALE = 100.0000' / 1in.	CHECKED -	REVISED -					270	60B-IDS-1	MADISON	13	4
PLLOT DATE = 12/3/2015	DATE -	REVISED -	REVISED -		CONTRACT NO. 76H48							
					SCALE: NONE	SHEET NO. 1 OF 1 SHEETS	STA.	TO STA.		FED. ROAD DIST. NO.	ILLINOIS FED. AID PROJECT	

CHANGEABLE MESSAGE SIGN



NOTE: MESSAGE BOARDS "A" SHALL BE PLACED 2 WEEKS PRIOR TO ANY LANE CLOSURES.

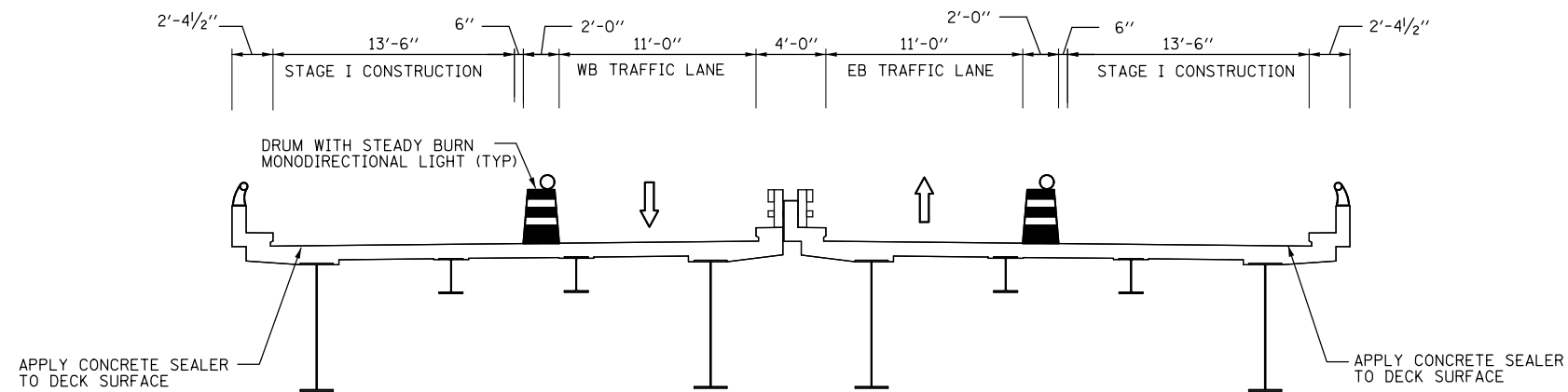
FILE NAME =	USER NAME = MannTM	DESIGNED -	REVISED -
pw:\IL084EBIDINTEG\illinois.gov\PWIDOT\Documents\IDOT Offices\District 8\Projects\0876\DRAWING\DATA\EA0sheets\0876H48-sht-pln.dwg		CHECKED -	REVISED -
		DATE -	REVISED -

**STATE OF ILLINOIS
DEPARTMENT OF TRANSPORTATION**

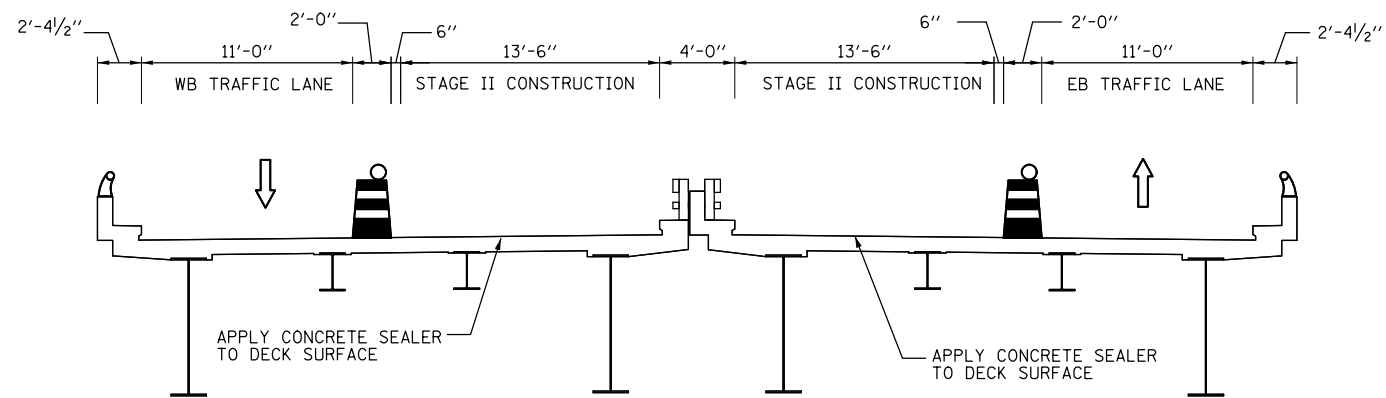
CHANGEABLE MESSAGE SIGN LOCATION SKETCH

SCALE: SHEET NO. 1 OF 1 SHEETS STA. TO STA.

F.A.I RTE.	SECTION	COUNTY	TOTAL SHEETS	SHEET NO.
270	60B-IDS-1	MADISON	13	5
CONTRACT NO. 76H48				
FED. ROAD DIST. NO. ILLINOIS FED. AID PROJECT				



STAGE 1



STAGE 2

NOTES:

INDIVIDUAL LANE CLOSURE RESTRICTIONS ARE ALLOWED AS APPROVED BY THE ENGINEER.

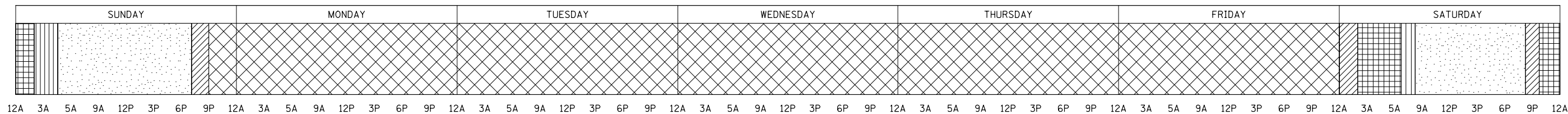
FOR LANE CLOSURE RESTRICTIONS SEE CHART

GENERAL NOTES:

"ROAD CONSTRUCTION AHEAD" SIGNS SHALL BE PLACED AT EACH END OF THE PROJECT AND ALL INTERSECTING SIDE ROADS AND WILL BE INCLUDED IN THE TRAFFIC CONTROL PAY ITEMS. ALL CONSTRUCTION SIGNS SHALL BE FLOURESCENT ORANGE, 48".

ADDITIONAL CHANGEABLE MESSAGE SIGNS SHALL BE PLACED OUTSIDE OF THE PROJECT LIMITS. SEE PLANS FOR PLACEMENT AND DURATION. THESE SIGNS WILL BE PAID FOR AS "CHANGEABLE MESSAGE SIGNS".

LANE CLOSURES SCHEDULE



LEGEND FOR FIRST LANE CLOSURE

- INITIAL TRAFFIC CONTROL SETUP - 12 AM TO 2 AM
- CURING TIME FOR DECK SEALER - 8 AM TO 8 PM
- PREPARATION OF DECK - 2 AM TO 6 AM
- PLACEMENT OF DECK SEALER - 6 AM TO 8 AM

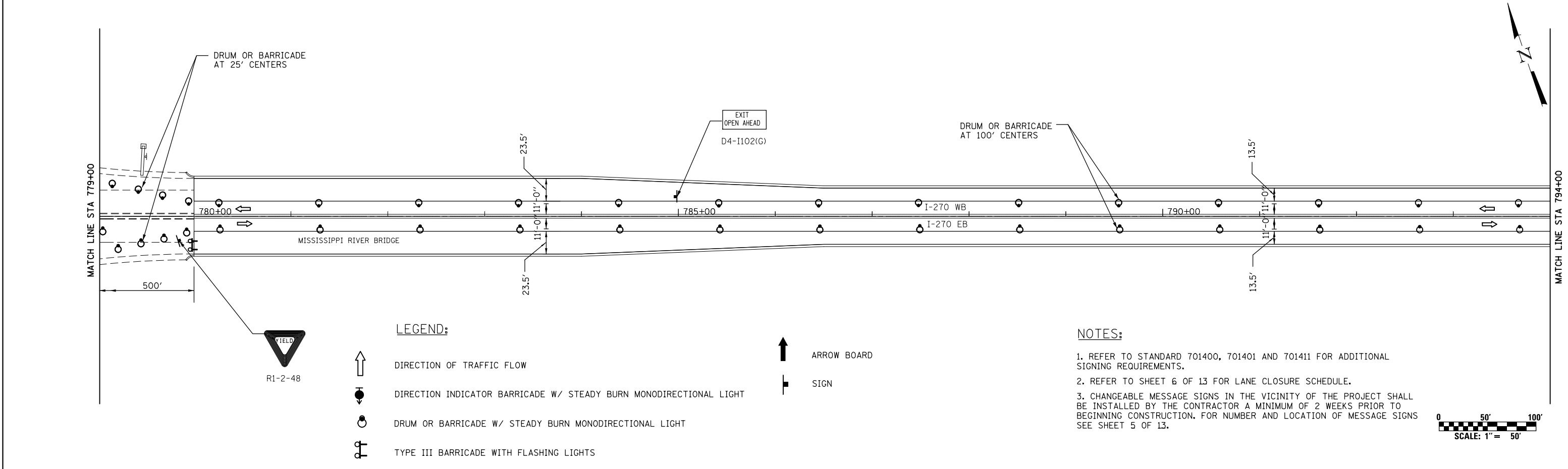
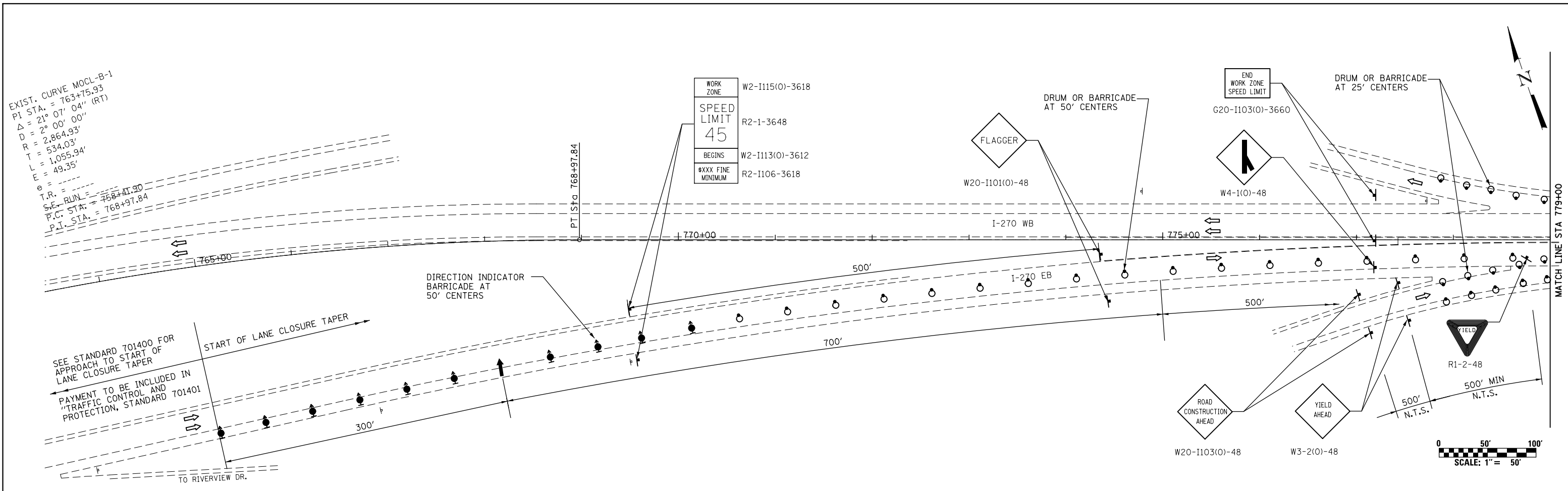
LEGEND FOR SECOND LANE CLOSURE

- TRAFFIC CONTROL REMOVAL AND SETUP - 8 PM TO 10 PM
- CURING TIME FOR DECK SEALER - 4 AM TO 7 PM
- PREPARATION OF DECK - 10 PM TO 2 AM
- NO LANE CLOSURES ALLOWED - AFTER 9 PM SUNDAY
- PLACEMENT OF DECK SEALER - 2 AM TO 4 AM

FILE NAME =	USER NAME = MannTM	DESIGNED -	REVISED -	STATE OF ILLINOIS DEPARTMENT OF TRANSPORTATION	SUGGESTED STAGES OF CONSTRUCTION AND TRAFFIC CONTROL			F.A.I. RTE.	SECTION	COUNTY	TOTAL SHEETS	SHEET NO.
pw:\11\084EBIDINTEG.illinois.gov\PWIDOT\Documents\IDOT Offices\District 8\Projects\0875\DRAWING\DATA\EA0\Sheets\0875H48-sht-plan.dwg	PLOT SCALE = 100.0000' / 1in.	CHECKED -	REVISED -					270	60B-IDS-1	MADISON	13	6
PLOT DATE = 12/9/2015	DATE -	REVISED -	REVISED -		SCALE: NONE SHEET NO. 1 OF 7 SHEETS STA. TO STA.			CONTRACT NO. 76H48				
					SCALE: NONE SHEET NO. 1 OF 7 SHEETS STA. TO STA.		FED. ROAD DIST. NO. ILLINOIS FED. AID PROJECT					

EXIST. CURVE MOCL-B-1
 PI STA. = 763+75.93
 $\Delta = 2^\circ 07' 04''$ (RT)
 $D = 2^\circ 00' 00''$
 $R = 2,864.93'$
 $T = 534.03'$
 $L = 1,055.94'$
 $E = 49.35'$
 $e =$
 $T.R. =$
 $S.E. RUN = 758+41.90$
 $P.C. STA. = 768+97.84$
 $P.T. STA. =$

WORK ZONE
 W2-I115(O)-3618
 SPEED LIMIT
 R2-1-3648
 45
 BEGINS
 W2-I113(O)-3612
 \$XXX FINE
 MINIMUM
 R2-I106-3618



LEGEND:

- DIRECTION OF TRAFFIC FLOW
- DIRECTION INDICATOR BARRICADE W/ STEADY BURN MONODIRECTIONAL LIGHT
- DRUM OR BARRICADE W/ STEADY BURN MONODIRECTIONAL LIGHT
- TYPE III BARRICADE WITH FLASHING LIGHTS
- ARROW BOARD
- SIGN

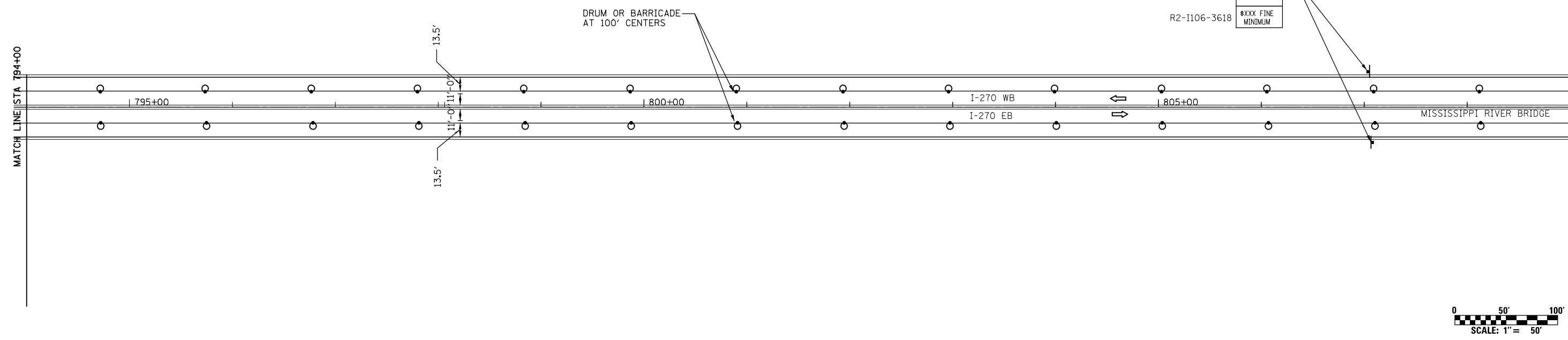
NOTES:

1. REFER TO STANDARD 701400, 701401 AND 701411 FOR ADDITIONAL SIGNING REQUIREMENTS.
2. REFER TO SHEET 6 OF 13 FOR LANE CLOSURE SCHEDULE.
3. CHANGEABLE MESSAGE SIGNS IN THE VICINITY OF THE PROJECT SHALL BE INSTALLED BY THE CONTRACTOR A MINIMUM OF 2 WEEKS PRIOR TO BEGINNING CONSTRUCTION. FOR NUMBER AND LOCATION OF MESSAGE SIGNS SEE SHEET 5 OF 13.

FILE NAME =	USER NAME = MannTM	DESIGNED - EVI	REVISED -	STATE OF ILLINOIS DEPARTMENT OF TRANSPORTATION	TRAFFIC CONTROL PLAN STAGE 1	F.A.I. RTE. = 270	SECTION = 60B-IDS-1	COUNTY = MADISON	TOTAL SHEETS = 13	SHEET NO. = 7		
#FILE#	PLOT SCALE = 100.0000' / 1" =	CHECKED - WCO	REVISED -			SCALE: 1" = 50'	SHEET NO. 2 OF 7 SHEETS	STA. TO STA.	CONTRACT NO. 76H48			
	PLOT DATE = 12/3/2015	DRAWN - EVI	REVISED -			ILLINOIS FED. AID PROJECT						
		CHECKED - WCO	REVISED -									

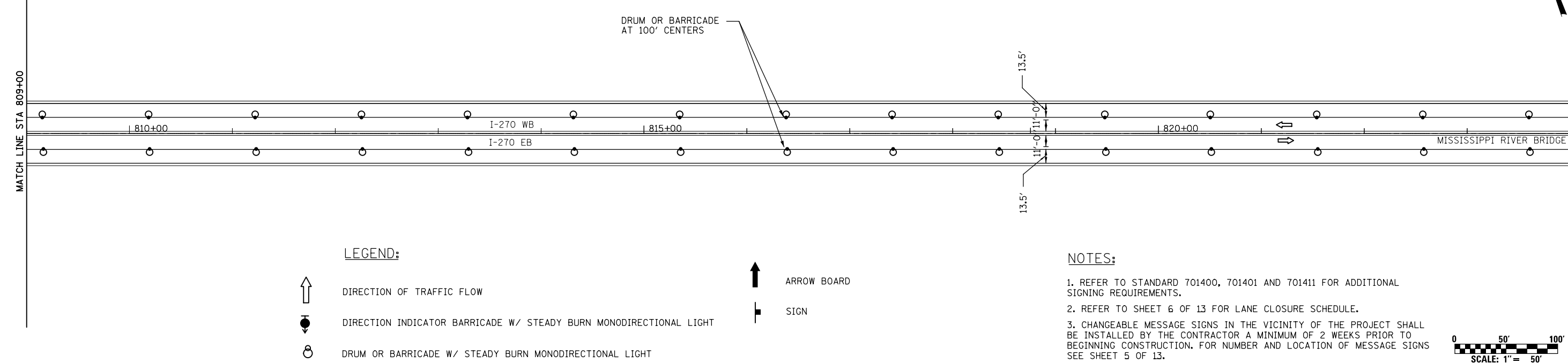
MATCH LINE STA 794+00

MATCH LINE STA 809+00




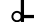




MATCH LINE STA 809+00

MATCH LINE STA 824+00



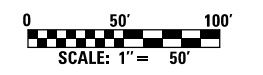
LEGEND:

-  DIRECTION OF TRAFFIC FLOW
-  DIRECTION INDICATOR BARRICADE W/ STEADY BURN MONODIRECTIONAL LIGHT
-  DRUM OR BARRICADE W/ STEADY BURN MONODIRECTIONAL LIGHT
-  TYPE III BARRICADE WITH FLASHING LIGHTS

-  ARROW BOARD
-  SIGN

NOTES:

1. REFER TO STANDARD 701400, 701401 AND 701411 FOR ADDITIONAL SIGNING REQUIREMENTS.
2. REFER TO SHEET 6 OF 13 FOR LANE CLOSURE SCHEDULE.
3. CHANGEABLE MESSAGE SIGNS IN THE VICINITY OF THE PROJECT SHALL BE INSTALLED BY THE CONTRACTOR A MINIMUM OF 2 WEEKS PRIOR TO BEGINNING CONSTRUCTION. FOR NUMBER AND LOCATION OF MESSAGE SIGNS SEE SHEET 5 OF 13.



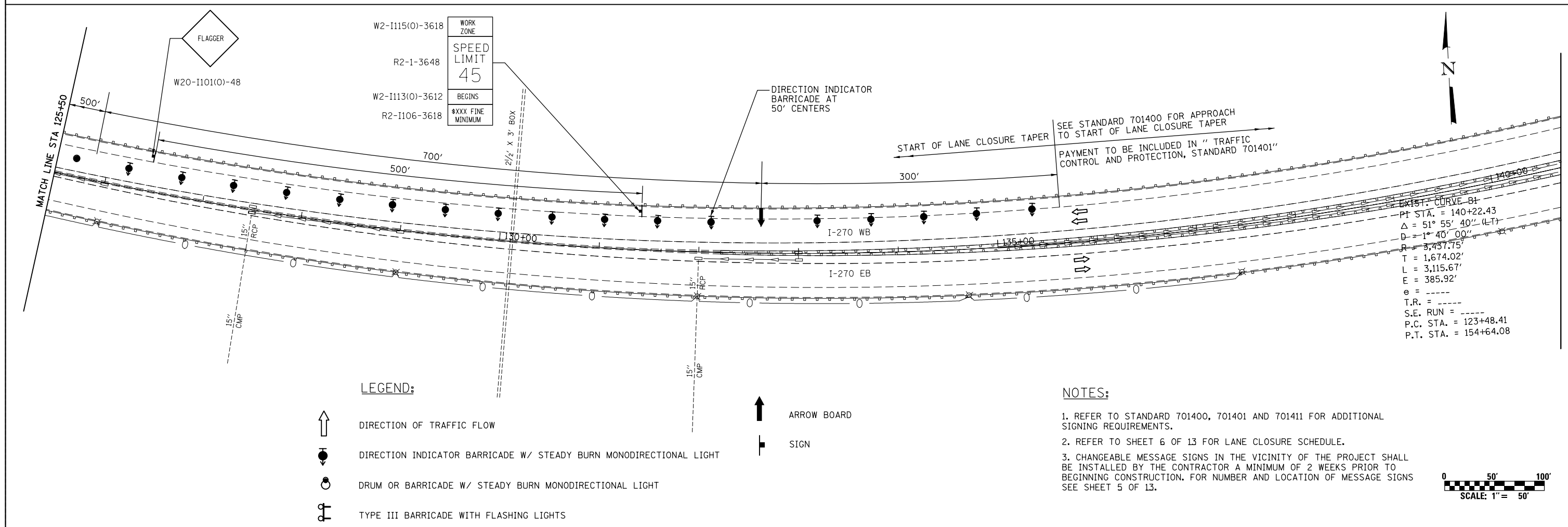
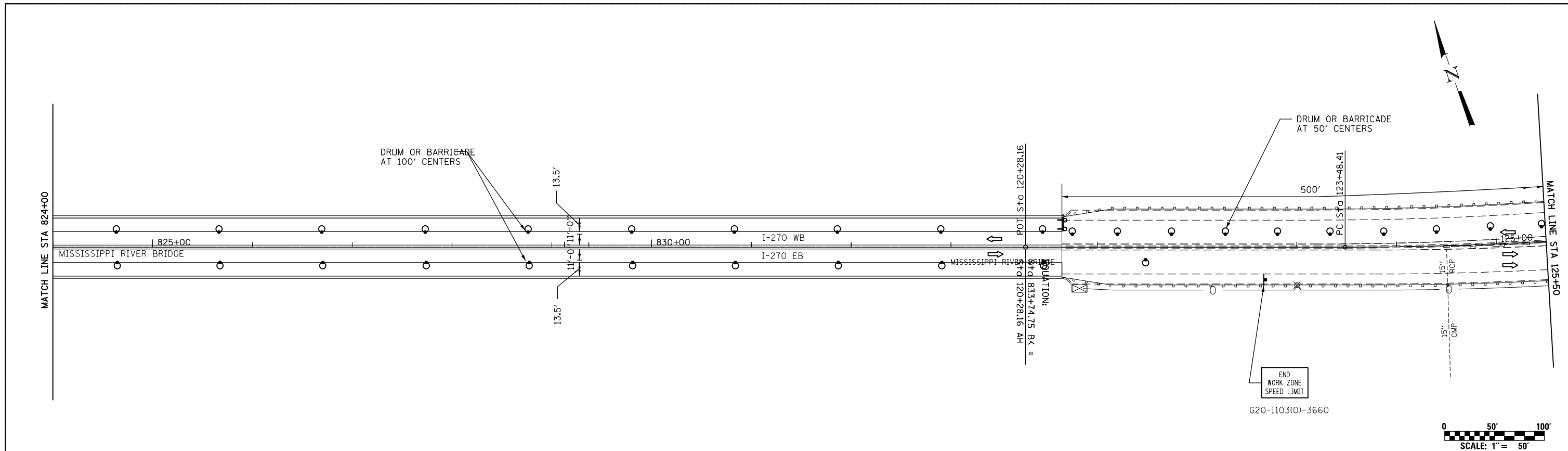
FILE NAME =	USER NAME = MannTM	DESIGNED -	REVISED -
pw:\IL\084EBIDINTEG.illinois.gov\PIDOT\Documents\IDOT Offices\District 8\Projects\0875\Drawings\EA0\Sheets\D876H48-sht-plan.dwg		DRAWN -	REVISED -
	PLOT SCALE = 100.0000' / 1in.	CHECKED -	REVISED -
	PLOT DATE = 12/3/2015	DATE -	REVISED -

**STATE OF ILLINOIS
DEPARTMENT OF TRANSPORTATION**

**TRAFFIC CONTROL PLAN
STAGE 1**

SCALE: 1"=50' SHEET NO. 3 OF 7 SHEETS STA. TO STA.

F.A.I. RTE.	SECTION	COUNTY	TOTAL SHEETS	SHEET NO.
270	60B-IDS-1	MADISON	13	8
CONTRACT NO. 76H48				
FED. ROAD DIST. NO.		ILLINOIS FED. AID PROJECT		



LEGEND:

- DIRECTION OF TRAFFIC FLOW
- DIRECTION INDICATOR BARRICADE W/ STEADY BURN MONODIRECTIONAL LIGHT
- DRUM OR BARRICADE W/ STEADY BURN MONODIRECTIONAL LIGHT
- TYPE III BARRICADE WITH FLASHING LIGHTS
- ARROW BOARD
- SIGN

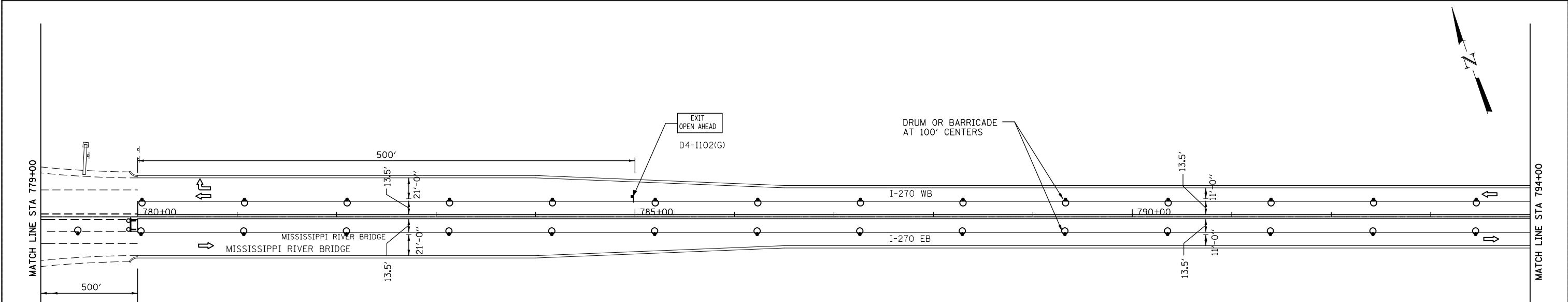
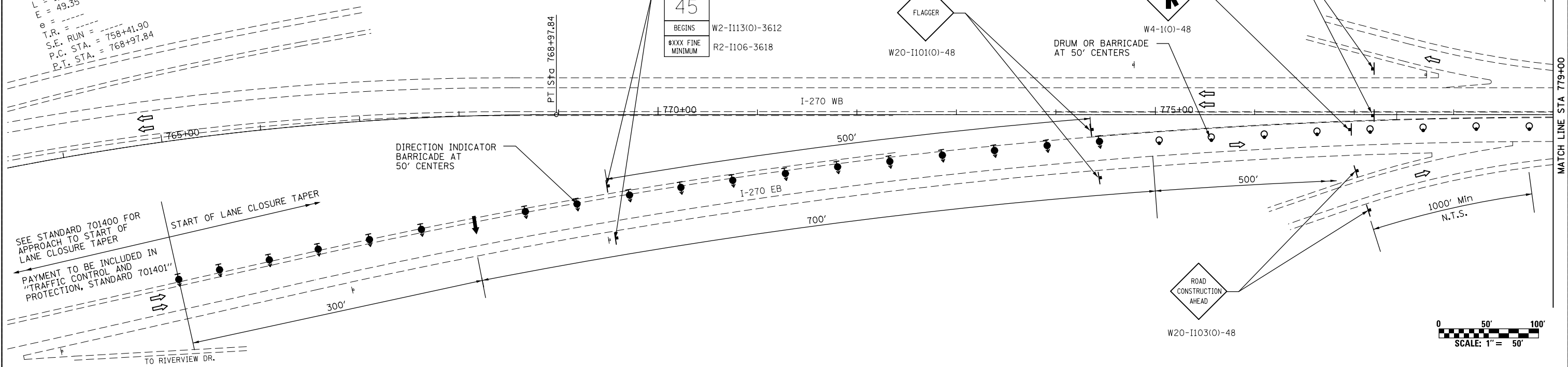
NOTES:

1. REFER TO STANDARD 701400, 701401 AND 701411 FOR ADDITIONAL SIGNING REQUIREMENTS.
2. REFER TO SHEET 6 OF 13 FOR LANE CLOSURE SCHEDULE.
3. CHANGEABLE MESSAGE SIGNS IN THE VICINITY OF THE PROJECT SHALL BE INSTALLED BY THE CONTRACTOR A MINIMUM OF 2 WEEKS PRIOR TO BEGINNING CONSTRUCTION. FOR NUMBER AND LOCATION OF MESSAGE SIGNS SEE SHEET 5 OF 13.

FILE NAME =	USER NAME = MannTM	DESIGNED -	REVISED -	STATE OF ILLINOIS DEPARTMENT OF TRANSPORTATION	TRAFFIC CONTROL PLAN STAGE 1	F.A.I. RTE.	SECTION	COUNTY	TOTAL SHEETS	SHEET NO.
pw\11084EBIDINTEG.illinois.gov\PIWIDOT\Documents\IDOT Offices\District 8\Projects\0875\Drawings\EA0\Sheets\0875H48-sht-pland	PLLOT SCALE = 100.0000' / in.	CHECKED -	REVISED -			270	60B-IDS-1	MADISON	13	9
PLLOT DATE = 12/3/2015	DATE -	REVISED -	REVISED -			CONTRACT NO. 76H48			FED. ROAD DIST. NO. ILLINOIS FED. AID PROJECT	

EXIST. CURVE MOCL-B-1
 PI STA. = 763+75.93
 $\Delta = 21^\circ 07' 04''$ (RT)
 $D = 2^\circ 00' 00''$
 $R = 2,864.93'$
 $T = 534.03'$
 $L = 1,055.94'$
 $E = 49.35'$
 $e =$
 T.R. =
 S.E. RUN = 758+41.90
 P.C. STA. = 768+97.84
 P.T. STA. =

WORK ZONE W2-I115(O)-3618
 SPEED LIMIT R2-1-3648
 45
 BEGINS W2-I113(O)-3612
 #XXX FINE MINIMUM R2-I106-3618

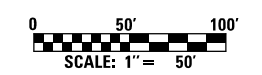


LEGEND:

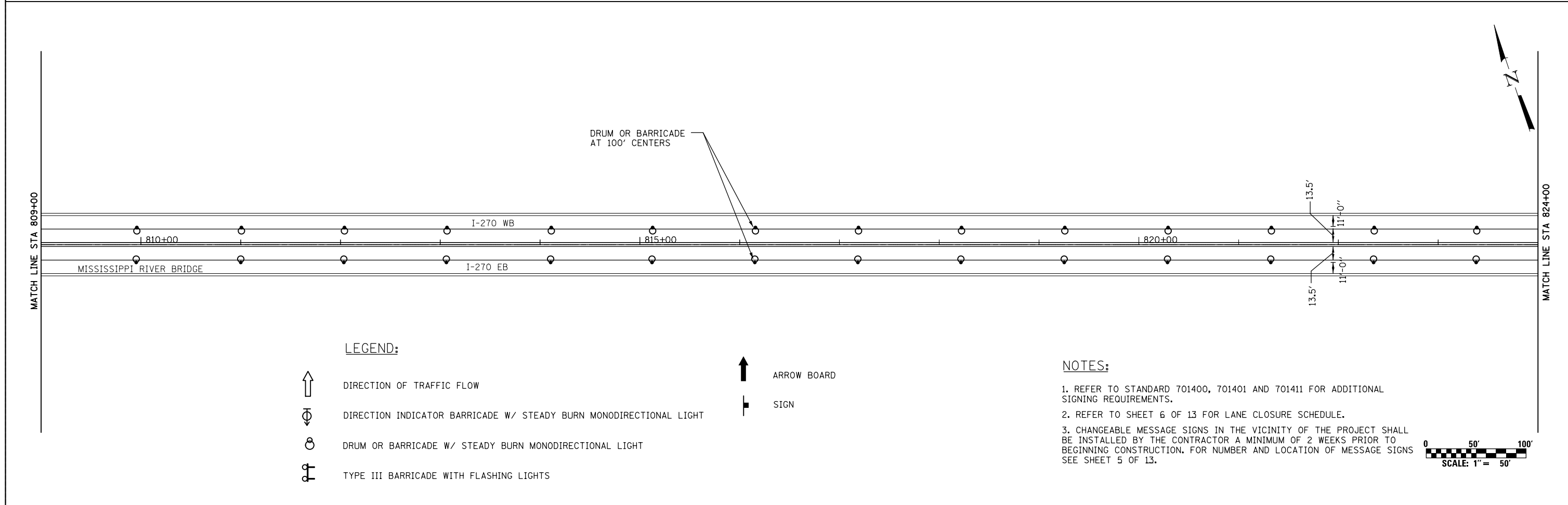
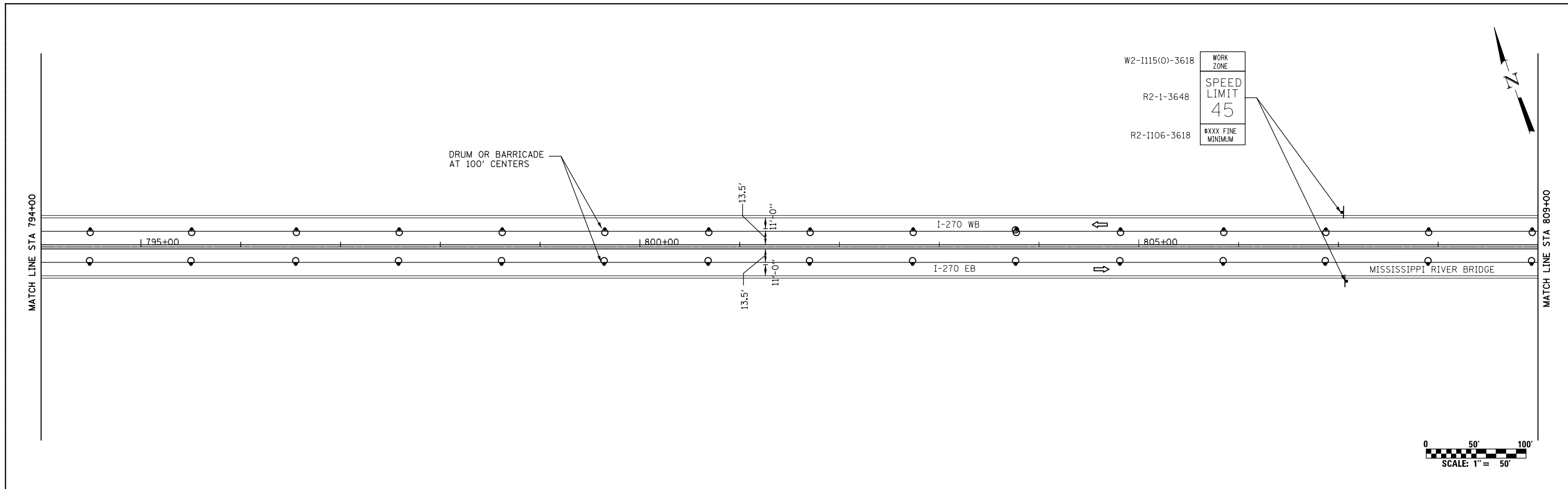
- DIRECTION OF TRAFFIC FLOW
- DIRECTION INDICATOR BARRICADE W/ STEADY BURN MONODIRECTIONAL LIGHT
- DRUM OR BARRICADE W/ STEADY BURN MONODIRECTIONAL LIGHT
- TYPE III BARRICADE WITH FLASHING LIGHTS
- ARROW BOARD
- SIGN

NOTES:







1. REFER TO STANDARD 701400, 701401 AND 701411 FOR ADDITIONAL SIGNING REQUIREMENTS.
2. REFER TO SHEET 6 OF 13 FOR LANE CLOSURE SCHEDULE.
3. CHANGEABLE MESSAGE SIGNS IN THE VICINITY OF THE PROJECT SHALL BE INSTALLED BY THE CONTRACTOR A MINIMUM OF 2 WEEKS PRIOR TO BEGINNING CONSTRUCTION. FOR NUMBER AND LOCATION OF MESSAGE SIGNS SEE SHEET 5 OF 13.



FILE NAME =	USER NAME = MannTM	DESIGNED -	REVISED -	STATE OF ILLINOIS DEPARTMENT OF TRANSPORTATION	TRAFFIC CONTROL PLAN STAGE 2	F.A.I. RTE.	SECTION	COUNTY	TOTAL SHEETS	SHEET NO.	
						270	60B-IDS-1	MADISON	13	10	
						CONTRACT NO. 76H48					
						FED. ROAD DIST. NO. ILLINOIS FED. AID PROJECT					
PLOT SCALE = 100.0000' / 1in. PLOT DATE = 12/3/2015				DESIGNED - CHECKED - DATE -	REVISED - REVISED - REVISED -	SCALE: 1"=50'		SHEET NO. 5 OF 7 SHEETS		STA. TO STA.	

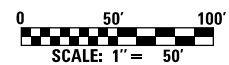


LEGEND:

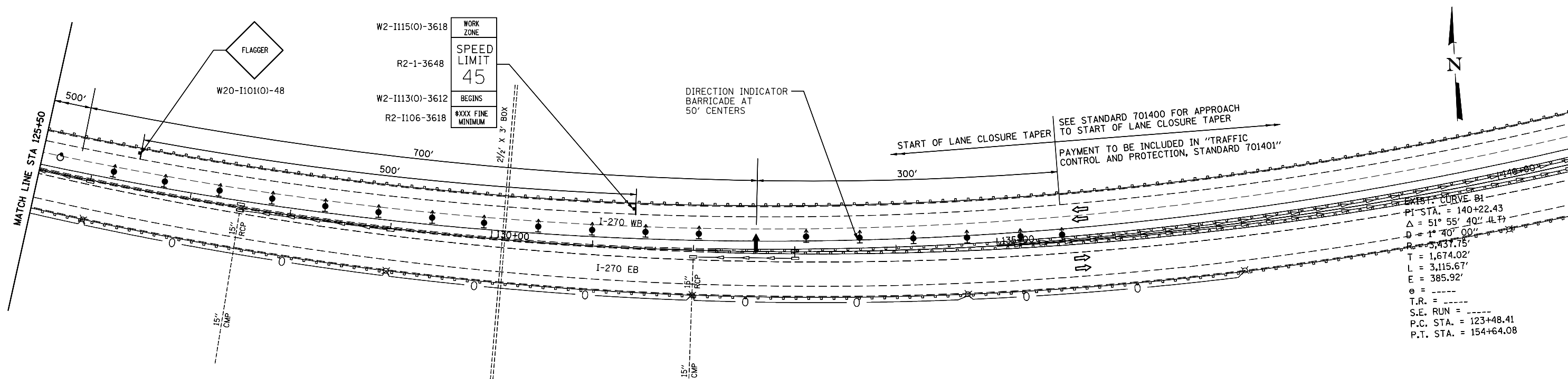
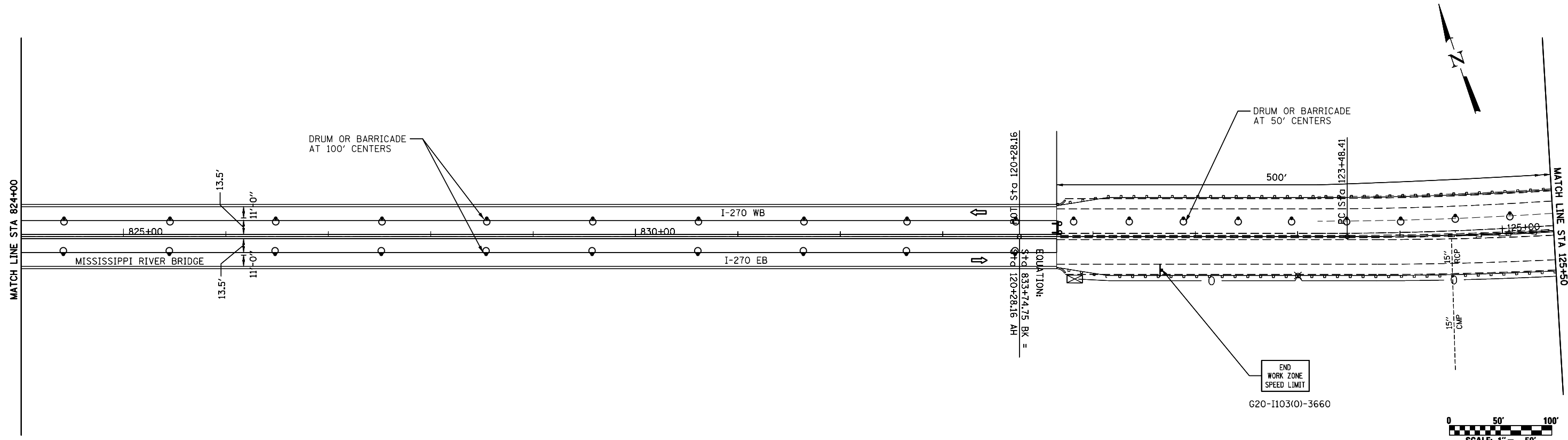
-  DIRECTION OF TRAFFIC FLOW
-  DIRECTION INDICATOR BARRICADE W/ STEADY BURN MONODIRECTIONAL LIGHT
-  DRUM OR BARRICADE W/ STEADY BURN MONODIRECTIONAL LIGHT
-  TYPE III BARRICADE WITH FLASHING LIGHTS
-  ARROW BOARD
-  SIGN

NOTES:

1. REFER TO STANDARD 701400, 701401 AND 701411 FOR ADDITIONAL SIGNING REQUIREMENTS.
2. REFER TO SHEET 6 OF 13 FOR LANE CLOSURE SCHEDULE.
3. CHANGEABLE MESSAGE SIGNS IN THE VICINITY OF THE PROJECT SHALL BE INSTALLED BY THE CONTRACTOR A MINIMUM OF 2 WEEKS PRIOR TO BEGINNING CONSTRUCTION. FOR NUMBER AND LOCATION OF MESSAGE SIGNS SEE SHEET 5 OF 13.



FILE NAME =	USER NAME = MannTM	DESIGNED -	REVISED -	STATE OF ILLINOIS DEPARTMENT OF TRANSPORTATION	TRAFFIC CONTROL PLAN STAGE 2			F.A.I RTE.	SECTION	COUNTY	TOTAL SHEETS	SHEET NO.
								270	60B-IDS-1	MADISON	13	11
								CONTRACT NO. 76H48				
						SCALE: 1"=50'	SHEET NO. 6 OF 7 SHEETS	STA.	TO STA.		FED. ROAD DIST. NO. ILLINOIS FED. AID PROJECT	



LEGEND:

- DIRECTION OF TRAFFIC FLOW
- DIRECTION INDICATOR BARRICADE W/ STEADY BURN MONODIRECTIONAL LIGHT
- DRUM OR BARRICADE W/ STEADY BURN MONODIRECTIONAL LIGHT
- TYPE III BARRICADE WITH FLASHING LIGHTS

- ARROW BOARD
- SIGN

NOTES:

1. REFER TO STANDARD 701400, 701401 AND 701411 FOR ADDITIONAL SIGNING REQUIREMENTS.
2. REFER TO SHEET 6 OF 13 FOR LANE CLOSURE SCHEDULE.
3. CHANGEABLE MESSAGE SIGNS IN THE VICINITY OF THE PROJECT SHALL BE INSTALLED BY THE CONTRACTOR A MINIMUM OF 2 WEEKS PRIOR TO BEGINNING CONSTRUCTION. FOR NUMBER AND LOCATION OF MESSAGE SIGNS SEE SHEET 5 OF 13.

FILE NAME =	USER NAME = MannTM	DESIGNED -	REVISED -
p:\11\084EBIDINTEG.illinois.gov\PIWIDOT\Documents\IDOT Offices\District 8\Projects\0875\Drawings\EA0\Sheets\D876H48-sht-plan.dwg		DRAWN -	REVISED -
	PLOT SCALE = 100.0000' / in.	CHECKED -	REVISED -
	PLOT DATE = 12/3/2015	DATE -	REVISED -

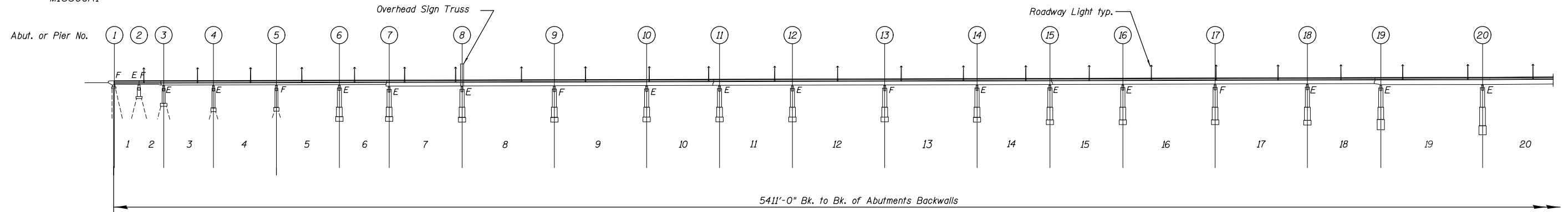
**STATE OF ILLINOIS
DEPARTMENT OF TRANSPORTATION**

**TRAFFIC CONTROL PLAN
STAGE 2**

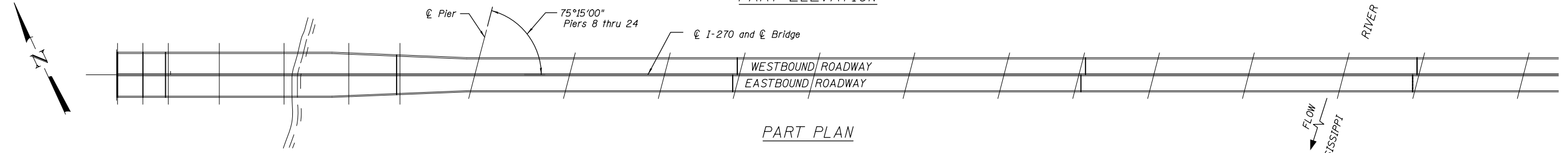
SCALE: 1"=50' SHEET NO. 7 OF 7 SHEETS STA. TO STA.

F.A.I. RTE.	SECTION	COUNTY	TOTAL SHEETS	SHEET NO.
270	60B-IDS-1	MADISON	13	12
CONTRACT NO. 76H48				
FED. ROAD DIST. NO. ILLINOIS FED. AID PROJECT				

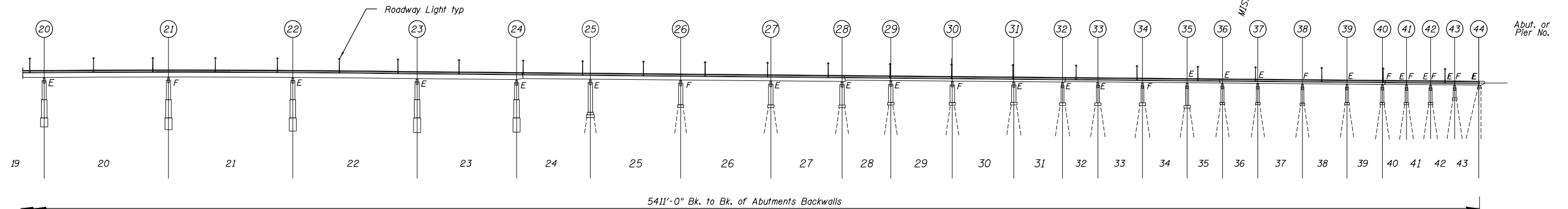
MISSOURI



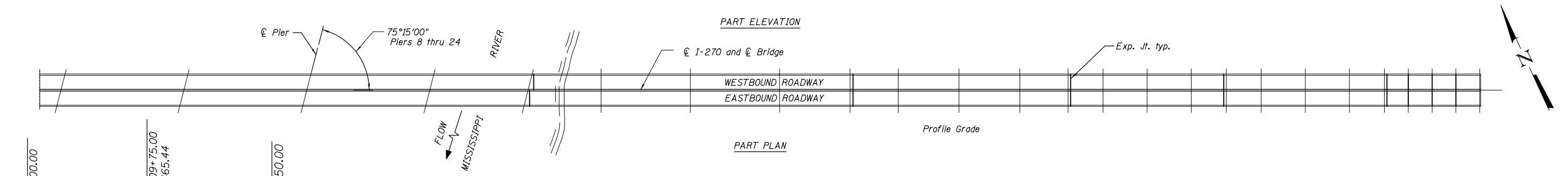
PART ELEVATION



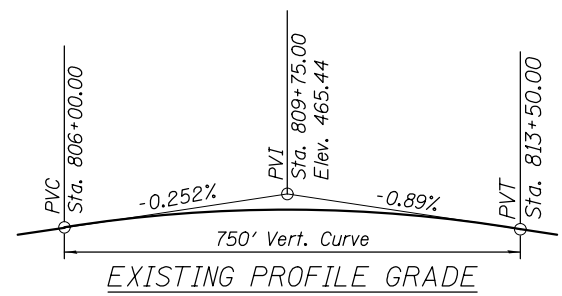
PART PLAN



PART ELEVATION



PART PLAN



GENERAL PLAN AND ELEVATION
 I-270 OVER MISSISSIPPI RIVER
 FAI-270
 MADISON COUNTY
 STRUCTURE NO. 060-0035

FILE NAME =	USER NAME = MannTM	DESIGNED -	REVISED -	STATE OF ILLINOIS DEPARTMENT OF TRANSPORTATION	STRUCTURE PLANS			F.A.I. RTE.	SECTION	COUNTY	TOTAL SHEETS	SHEET NO.
pw:\11084EBIDINTEG.illinois.gov\PIWIDOT\Documents\IDOT Offices\District 8\Projects\0875\DRAWING\DATA\EA0\Sheets\0875H48-sht-plan.dwg		CHECKED -	REVISED -		270	60B-IDS-1	MADISON	13	13			
PLOT SCALE = 100.0000' / 1in.		DATE -	REVISED -		CONTRACT NO. 76H48							
PLOT DATE = 12/3/2015					SCALE: NONE	SHEET NO. 1 OF 1 SHEETS	STA.	TO STA.	FED. ROAD DIST. NO.	ILLINOIS FED. AID PROJECT		