

STATE OF ILLINOIS
DEPARTMENT OF TRANSPORTATION
DIVISION OF HIGHWAYS

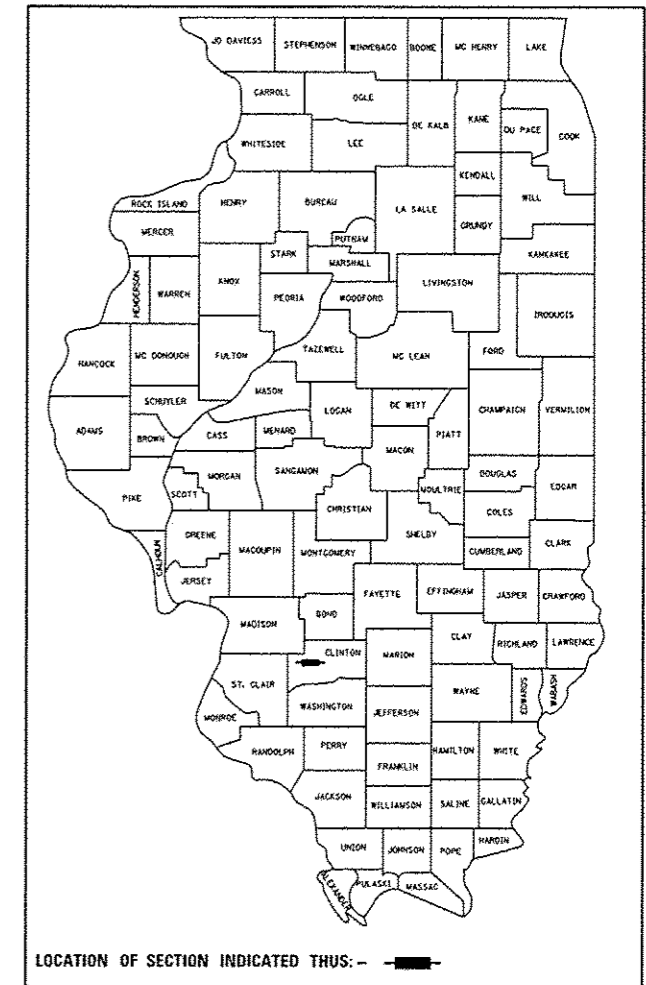
**PROPOSED
HIGHWAY PLANS**

FAP ROUTE 327 (US 50)
SECTION (14-12, 14-13, 14-14)-I-1
CONCRETE PATCHING
CLINTON COUNTY

F.A.P. RTE.	SECTION	COUNTY	TOTAL SHEETS	SHEET NO.
327	(14-12,14-13,14-14)-I-1	CLINTON	9	1
		ILLINOIS	CONTRACT NO. 76J02	

FOR INDEX OF SHEETS, SEE SHEET NO. 2

D-98-059-15

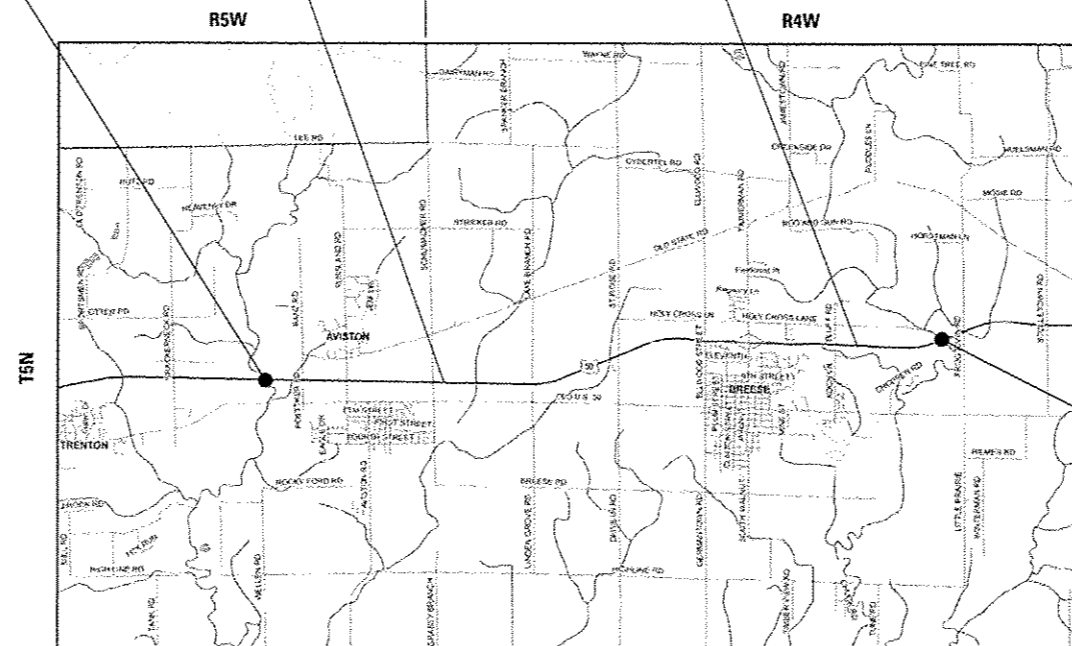


C-98-052-15

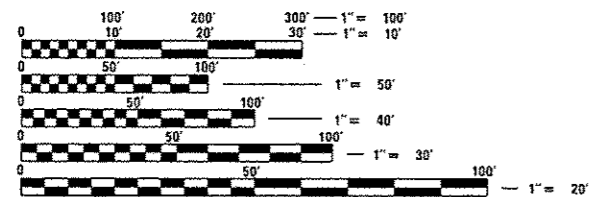
BEGIN PROJECT
SUGAR CREEK
LAT: 38.61605
LONG: -89.62999
M.S. 0.0

2013 ADT = 6850 (ACTUAL)
2016 ADT = 7000 (ESTIMATED)
2036 ADT = 8100 (ESTIMATED)
SU = 6.9% MU = 8.6%

2013 ADT = 6000 (ACTUAL)
2016 ADT = 6150 (ESTIMATED)
2036 ADT = 7100 (ESTIMATED)
SU = 5.0% MU = 9.2%



END PROJECT
SHOAL CREEK
LAT: 38.62214
LONG: -89.48407
M.S. 7.9



FULL SIZE PLANS HAVE BEEN PREPARED USING STANDARD ENGINEERING SCALES. REDUCED SIZED PLANS WILL NOT CONFORM TO STANDARD SCALES. IN MAKING MEASUREMENTS ON REDUCED PLANS, THE ABOVE SCALES MAY BE USED.

J.U.L.I.E.
JOINT UTILITY LOCATION INFORMATION FOR EXCAVATION
1-800-892-0123
OR 811

PROJECT ENGINEER: MICHAEL PRITCHETT (618)346-3181
DESIGNER: ALVIN NIEVES-ROSARIO (618)346-3141

GROSS LENGTH = 41,743 FT. = 7.9 MILE
NET LENGTH = 41,743 FT. = 7.9 MILE

TOWNSHIPS
AVISTON TOWNSHIP
BREESE TOWNSHIP

CONTRACT NO. 76J02

STATE OF ILLINOIS
DEPARTMENT OF TRANSPORTATION
DIVISION OF HIGHWAYS

SUBMITTED Dec 8 20 15

Jeffrey Z. Kan
DEPUTY DIRECTOR OF HIGHWAYS, REGION 5 ENGINEER

Jan 29 20 16
Maurice M. Addis PE
ENGINEER OF DESIGN AND ENVIRONMENT

Jan 29 20 16
Orin Osman PE
DIRECTOR OF HIGHWAYS, CHIEF ENGINEER

**PRINTED BY THE AUTHORITY
OF THE STATE OF ILLINOIS**

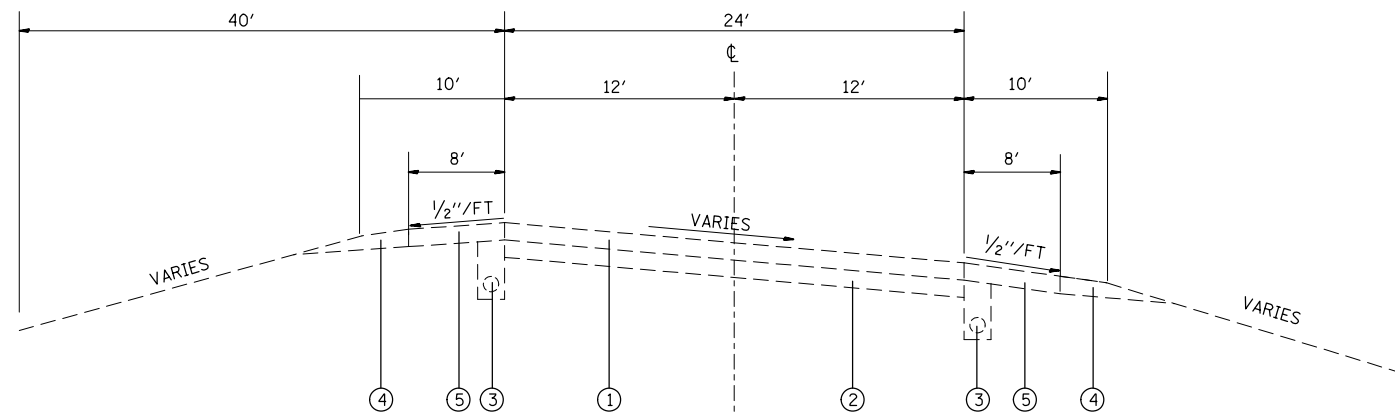
CODE NO.	ITEM	UNIT	TOTAL QUANTITY	CONSTR. CODE	
				100% STATE	
				ROADWAY	RURAL
44200517	CLASS A PATCHES, TYPE II, 7 INCH	SO YD	10	10	
44200521	CLASS A PATCHES, TYPE III, 7 INCH	SO YD	19	19	
44200529	CLASS A PATCHES, TYPE II, 8 INCH	SO YD	255	255	
44200533	CLASS A PATCHES, TYPE III, 8 INCH	SO YD	299	299	
44200535	CLASS A PATCHES, TYPE IV, 8 INCH	SO YD	457	457	
44200541	CLASS A PATCHES, TYPE II, 9 INCH	SO YD	10	10	
44213000	PATCHING REINFORCEMENT	SO YD	1050	1050	
44213200	SAW CUTS	FOOT	4194	4194	
44213204	TIE BARS 3/4"	EACH	184	184	
67000400	ENGINEER'S FIELD OFFICE, TYPE A	CAL MO	1	1	
67100100	MOBILIZATION	L SUM	1	1	
70100310	TRAFFIC CONTROL AND PROTECTION, STANDARD 701421	L SUM	1	1	
70100420	TRAFFIC CONTROL AND PROTECTION, STANDARD 701411	EACH	4	4	
70100450	TRAFFIC CONTROL AND PROTECTION, STANDARD 701201	L SUM	1	1	

CODE NO.	ITEM	UNIT	TOTAL QUANTITY	CONSTR. CODE	
				100% STATE	
				ROADWAY	RURAL
70100600	TRAFFIC CONTROL AND PROTECTION, STANDARD 701336	L SUM	1	1	
* 78001110	PAINT PAVEMENT MARKING - LINE 4"	FOOT	1099	1099	
* 78100100	RAISED REFLECTIVE PAVEMENT MARKER	EACH	47	47	

3

* SPECIALTY ITEM

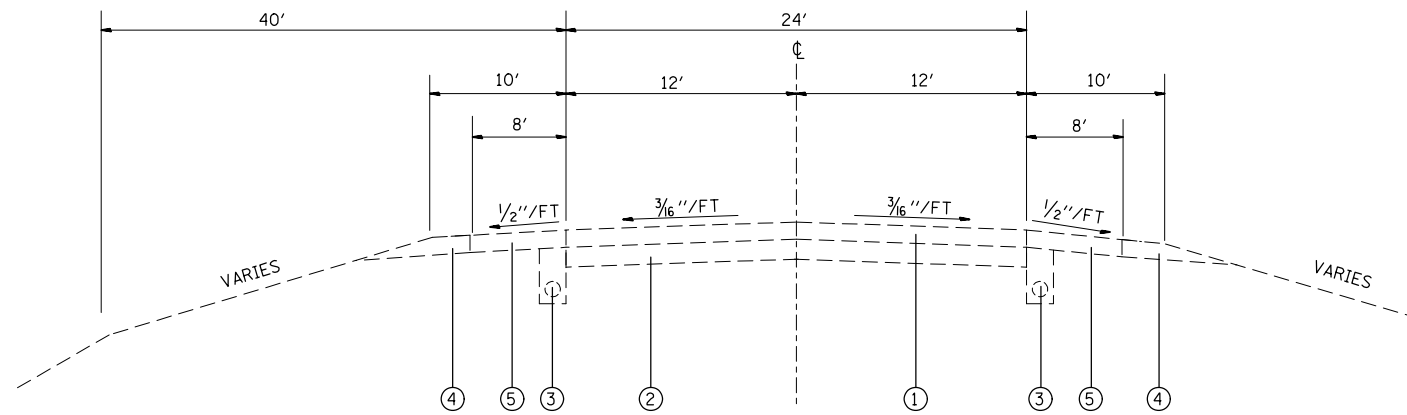
14



US ROUTE 50

•2.812 TO 3.247
 4.531 TO 4.951
 7.512 TO 7.909

- LEGEND**
- ① EXISTING CRPCC PAVEMENT 7", 8", OR 9" (SEE SCHEDULE)
 - ② EXISTING STABILIZED SUB-BASE CAM II 4"
 - ③ EXISTING PIPE UNDERDRAINS 4"
 - ④ EXISTING AGGREGATE SHOULDER TYPE B
 - ⑤ EXISTING P.C. CONCRETE SHOULDER
 - EXISTING HMA SHOULDERS

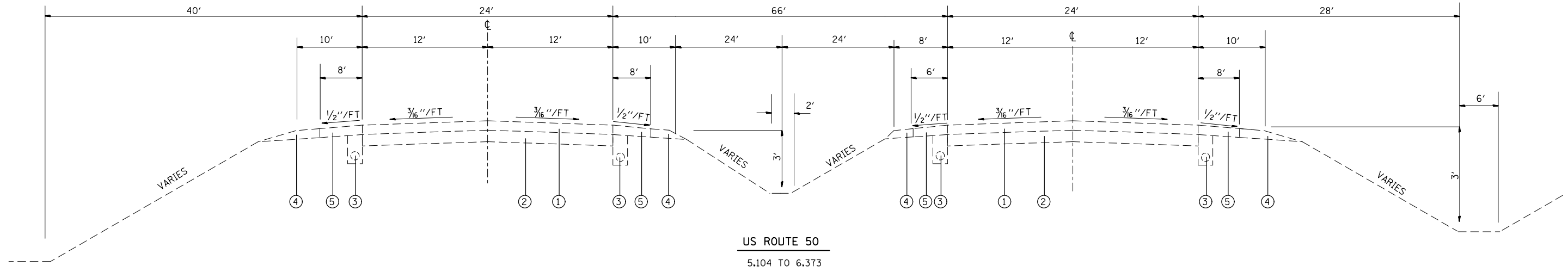


US ROUTE 50

•0.000 TO 2.812
 •3.247 TO 3.907
 3.907 TO 4.531
 4.951 TO 5.104
 6.373 TO 7.512

DEPTH SCHEDULE			
MILE		MILE	DEPTH
0.000	TO	3.932	8"
3.932	TO	4.410	9"
4.410	TO	5.016	8"
5.016	TO	5.714	8"
5.714	TO	5.739	BA
5.768	TO	5.793	BA
5.793	TO	6.535	8"
6.535	TO	7.042	8"
7.042	TO	7.909	7"

BA - BRIDGE APPROACH PAVEMENT



US ROUTE 50
5.104 TO 6.373

LEGEND

- ① EXISTING CRPCC PAVEMENT 7", 8", OR 9" (SEE SCHEDULE)
- ② EXISTING STABILIZED SUB-BASE CAM II 4"
- ③ EXISTING PIPE UNDERDRAINS 4"
- ④ EXISTING AGGREGATE SHOULDER TYPE B
- ⑤ EXISTING P.C. CONCRETE SHOULDER
- EXISTING HMA SHOULDERS

FILE NAME =	USER NAME = NievesA	DESIGNED -	REVISED -
pw:\IL\084EBIDINTEG\illinois.gov\PWIDOT\Documents\DOT Offices\District 8\Projects\0875\DRAWING\DATA\EAD\sheets\D876J02-sht-cover.dwg		DRAWN -	REVISED -
	PLOT SCALE = 100.0000' / 1in.	CHECKED -	REVISED -
	PLOT DATE = 12/8/2015	DATE -	REVISED -

**STATE OF ILLINOIS
DEPARTMENT OF TRANSPORTATION**

TYPICAL SECTIONS

SCALE: NONE SHEET NO. 2 OF 2 SHEETS STA. TO STA.

F.A.P. RTE.	SECTION	COUNTY	TOTAL SHEETS	SHEET NO.
327	(14-12, 14-13, 14-14)-I-1	CLINTON	9	5
FED. ROAD DIST. NO. 8 ILLINOIS FED. AID PROJECT			CONTRACT NO. 76J02	

CLASS A PATCHING SCHEDULE EB																		
MILE	LOCATION	WIDTH	LENGTH	CLASS A PATCHES 7"		CLASS A PATCHES 8"			CLASS A PATCHES 9"	PATCHING REINFORCEMENT	SAW CUTS	TIE BARS 3/4"	RAISED REFLECTIVE PAVEMENT MARKERS		PAINT PAVEMENT MARKING - LINE 4"			
				TYPE II	TYPE III	TYPE II	TYPE III	TYPE IV	TYPE II				AMBER	WHITE	SKIP DASH YELLOW	SKIP DASH WHITE	SOLID WHITE	SOLID YELLOW
				SQ YD		SQ YD			SQ YD				SQ YD	FOOT	EACH	EACH		FOOT
0.09	EB	12	6			8				8	60		1		6		6	
0.16	EB	12	12				16			16	72		1		10		12	
0.21	EB	12	6			8				8	60		1		6		6	
0.28	EB	6	30				20			20	84	14	1		10		30	
0.40	EB	12	6			8				8	60		1		6		6	
0.54	EB	12	6			8				8	60		1		6		6	
0.64	EB	12	12				16			16	72		1		10		12	
0.75	EB	12	6			8				8	60		1		6		6	
0.82	EB	12	6			8				8	60		1		6		6	
0.94	EB	12	80					107		107	208	39	1		20		80	
1.14	EB	12	6			8				8	60		1		6		6	
1.28	EB	12	24					32		32	96	11	1		10		24	
1.45	EB	12	12				16			16	72		1		10		12	
1.53	EB	12	6			8				8	60		1		6		6	
1.62	EB	12	15				20			20	78		1		10		15	
1.84	EB	12	12				16			16	72		1		10		12	
2.03	EB	12	6			8				8	60		1		6		6	
3.01	EB	12	6			8				8	60		1		6		6	
3.36	EB	12	6			8				8	60		1		6		6	
3.87	EB	12	16				22			22	80		1		10		16	
5.42	EBRL	12	6			8				8	66			1		6	6	
6.03	EBRL	12	18				24			24	102			1		10	18	
6.64	EB	12	6			8				8	66		1		6		6	
7.10	EB	12	12		16					16	84		1		10		12	
7.33	EB	12	6	8						8	66		1		6		6	
SUBTOTAL EB				8	16	104	150	139	0	417	1878	64	23	2	188	16	327	0
15% SUBTOTAL FOR ANTICIPATED FAILURES				2	3	16	23	21	0	65	282	10						
TOTAL EB				10	19	120	173	160	0	482	2160	74		25				531

EBRL - EASTBOUND RIGHT LANE
EBLL - EASTBOUND LEFT LANE

CLASS A PATCHING SCHEDULE WB																				
MILE	LOCATION	WIDTH	LENGTH	CLASS A PATCHES 7"		CLASS A PATCHES 8"			CLASS A PATCHES 9"	PATCHING REINFORCEMENT	SAW CUTS	TIE BARS 3/4"	RAISED REFLECTIVE PAVEMENT MARKERS		PAINT PAVEMENT MARKING - LINE 4"					
				TYPE II	TYPE III	TYPE II	TYPE III	TYPE IV	TYPE II				AMBER	WHITE	SKIP DASH YELLOW	SKIP DASH WHITE	SOLID WHITE	SOLID YELLOW		
		FOOT	FOOT	SQ YD		SQ YD			SQ YD	SQ YD	FOOT	EACH	EACH		FOOT	FOOT	FOOT	FOOT		
0.07	WB	12	6			8				8	60		1		6		6			
0.14	WB	12	12				16			16	72		1		10		12			
0.21	WB	12	160					214		214	368	79	2		40		160			
0.39	WB	12	6			8				8	60		1		6		6			
0.55	WB	12	6			8				8	60		1		6		6			
0.74	WB	12	10			14				14	68		1		10		10			
0.88	WB	12	15				20			20	78		1		10		15			
0.97	WB	12	6			8				8	60		1		6		6			
1.05	WB	12	14				19			19	76		1		10		14			
1.48	WB	12	6			8				8	60		1		6		6			
1.55	WB	12	16				22			22	80		1		10		16			
2.03	WB	12	8			11				11	64		1		8		8			
2.30	WB	12	6			8				8	60		1		6		6			
2.63	WB	12	12				16			16	72		1		10		12			
2.94	WB	12	6			8				8	60		1		6		6			
3.17	WB	12	33					44		44	114	16	1		10		33			
3.56	WB	12	6			8				8	60		1		6		6			
3.87	WB	12	10			14				14	68		1		10		10			
4.31	WB	12	6						8	8	66		1		6		6			
5.67	WBLL	12	12				16			16	84			1		10	12			
6.17	WBRL	12	10			14				14	78			1		10	10			
SUBTOTAL WB						0	0	117	109	258	8	492	1768	95	20	2	182	20	354	12
15% SUBTOTAL FOR ANTICIPATED FAILURES						0	0	18	17	39	2	76	266	15						
TOTAL WB						0	0	135	126	297	10	568	2034	110	22					568

WBRL - WESTBOUND RIGHT LANE
WBLL - WESTBOUND LEFT LANE

CLASS A PATCHING SCHEDULE TOTAL												
DIRECTION	CLASS A PATCHES 7"		CLASS A PATCHES 8"			CLASS A PATCHES 9"	PATCHING REINFORCEMENT	SAW CUTS	TIE BARS 3/4"	RAISED REFLECTIVE PAVEMENT MARKERS	PAINT PAVEMENT MARKING - LINE 4"	
	TYPE II	TYPE III	TYPE II	TYPE III	TYPE IV	TYPE II						
		SQ YD		SQ YD			SQ YD	SQ YD	FOOT	EACH	EACH	FOOT
EASTBOUND	10	19	120	173	160	0	482	2160	74	25	531	
WESTBOUND	0	0	135	126	297	10	568	2034	110	22	568	
TOTAL	10	19	255	299	457	10	1050	4194	184	47	1099	

QUANTITIES FOR 100-FOOT APPROACH SLAB

Skew Angle	Bottom Reinforcement				Top Reinforcement				Total Weight bars-lbs.	
	#5 B bars		A		B ₁	#4 A ₃ bars		#4 A ₄ bars		
	No.	Length	A ₁	A ₂		No.	Length	No.		Length

Skew Angle	Bottom Reinforcement				Top Reinforcement				Total Weight bars-lbs.	
	#5 B bars		A		B ₁	#4 A ₃ bars		#4 A ₄ bars		
	No.	Length	A ₁	A ₂		No.	Length	No.		Length

Skew Angle	Bottom Reinforcement				Top Reinforcement				Total Weight bars-lbs.	
	#5 B bars		A		B ₁	#4 A ₃ bars		#4 A ₄ bars		
	No.	Length	A ₁	A ₂		No.	Length	No.		Length

16-FOOT WIDTH PAVEMENT

Skew Angle	#5 B bars	A	B ₁	#4 A ₃ bars	#4 A ₄ bars	Total Weight bars-lbs.
0°	40	15'-6"		81	34'-3"	5980
5°	40	15'-7"		81	34'-0" H	6010
10°	40	15'-9"		81	33'-10" H	6030
15°	40	16'-1"		81	33'-7" H	6030
20°	40	16'-6"		81	33'-5" H	6050
25°	40	17'-1"		81	33'-2" H	6070
30°	40	17'-11"		81	32'-11" H	6110
35°	40	18'-11"		81	32'-7" H	6150
40°	40	20'-3"		81	32'-3" H	6200
45°	40	21'-11"		81	31'-11" H	6280
50°	40	24'-1"		81	31'-5" H	6370
55°	40	27'-0"		81	30'-11" H	6490
60°	40	31'-0"		81	30'-2" H	6660

24-#5 A bars 27'-0"
11-#5 A₁ bars 20'-3"
24-#5 A₂ bars 10'-0"
26-#4 B₁ bars 15'-6"
Bridge Approach Pavement 178 Sq. Yds.

24-FOOT WIDTH PAVEMENT

Skew Angle	#5 B bars	A	B ₁	#4 A ₃ bars	#4 A ₄ bars	Total Weight bars-lbs.
0°	40	23'-6"		126	34'-3"	8840
5°	40	23'-7"		126	33'-10" 21	8880
10°	40	23'-10"		126	33'-6" 21	8890
15°	40	24'-4"		126	33'-2" 21	8910
20°	40	25'-0"		126	32'-9" 21	8940
25°	40	25'-11"		126	32'-4" 21	8980
30°	40	27'-2"		126	31'-11" 21	9030
35°	40	28'-8"		126	31'-5" 21	9190
40°	40	30'-8"		126	30'-10" 21	9170
45°	40	33'-3"		126	30'-3" 21	9290
50°	40	39'-1"		126	29'-5" 21	9490
55°	40	41'-4"		126	28'-6" 21	9680
60°	40	44'-4"		126	27'-3" 42	9940

32-#5 A bars 27'-0"
19-#5 A₁ bars 20'-3"
38-#5 A₂ bars 10'-0"
52-#4 B₁ bars 11'-6"
Bridge Approach Pavement 287 Sq. Yds.

36-FOOT WIDTH PAVEMENT

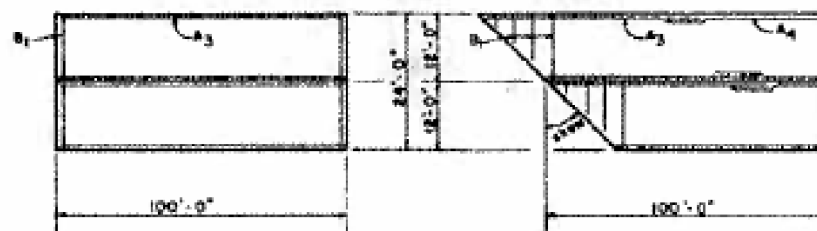
Skew Angle	#5 B bars	A	B ₁	#4 A ₃ bars	#4 A ₄ bars	Total Weight bars-lbs.
0°	40	35'-6"		189	34'-3"	13040
5°	40	35'-8"		189	33'-8" 32	13090
10°	40	36'-0"		189	33'-2" 32	13110
15°	40	37'-4"		189	32'-8" 32	13230
20°	40	39'-10"		189	32'-0" 32	13260
25°	40	40'-7"		189	31'-5" 32	13330
30°	40	41'-6"		189	30'-9" 32	13410
35°	40	42'-8"		189	30'-0" 32	13510
40°	40	44'-2"		189	29'-2" 32	13630
45°	40	46'-2"		189	28'-5" 64	13840
50°	40	48'-8"		189	27'-1" 64	14050
55°	40	52'-0"		189	25'-8" 64	14330
60°	40	56'-7"		189	23'-10" 64	14710

44-#5 A bars 27'-0"
31-#5 A₁ bars 20'-3"
44-#5 A₂ bars 10'-0"
79-#4 B₁ bars 11'-6"
Bridge Approach Pavement 400 Sq. Yds.

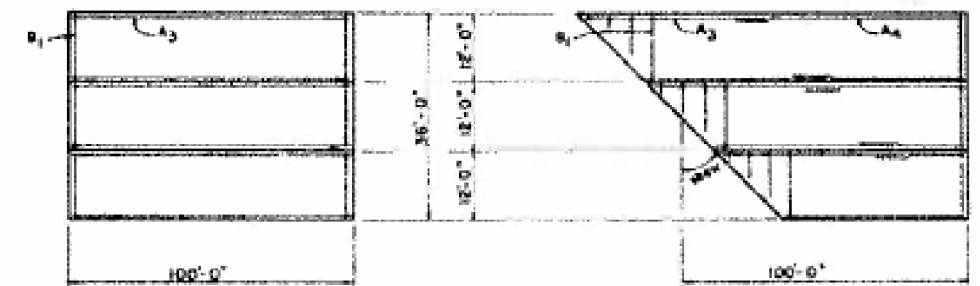
TOP OF SLAB BAR ARRANGEMENT



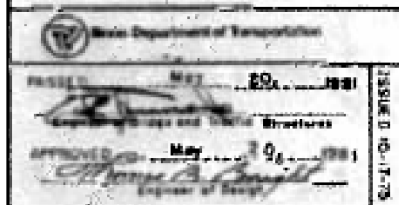
TOP OF SLAB BAR ARRANGEMENT



TOP OF SLAB BAR ARRANGEMENT



FOR INFORMATION ONLY



BRIDGE APPROACH PAVEMENT
(Sheet 2 of 2)
STANDARD 2353-5

FILE NAME =	USER NAME = NievesA	DESIGNED -	REVISED -	STATE OF ILLINOIS DEPARTMENT OF TRANSPORTATION	FOR INFORMATION ONLY - BRIDGE APPROACH STANDARD			F.A.P. RTE.	SECTION	COUNTY	TOTAL SHEETS	SHEET NO.	
pw\11084EBIDINTEG.111nois.gov\PIWIDOT\Documents\DOT Offices\District 8\Projects\0876\DRAWINGData\EAD\Sheets\0876J02-sht-cover		CHECKED -	REVISED -		SCALE: NONE	SHEET NO. 2 OF 2 SHEETS	STA.	TO STA.	327	(14-12, 14-13, 14-14)-1-1	CLINTON	9	9
		DATE -	REVISED -					CONTRACT NO. 76J02			FED. ROAD DIST. NO. 8 (ILLINOIS) FED. AID PROJECT		