

STATE OF ILLINOIS
DEPARTMENT OF TRANSPORTATION
DIVISION OF HIGHWAYS

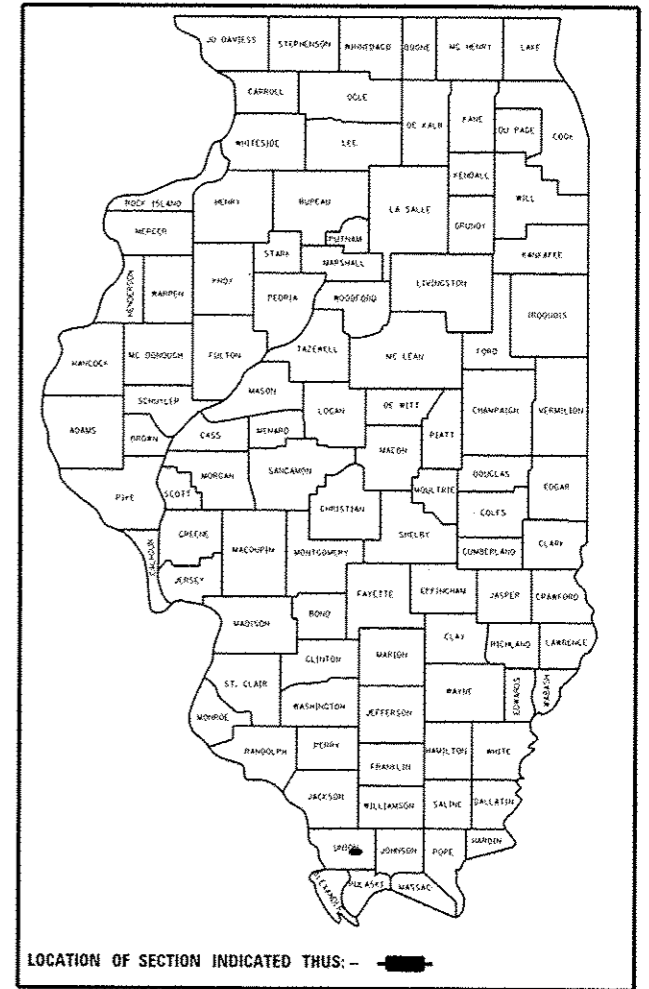
**PROPOSED
HIGHWAY PLANS**

FAP ROUTE 885 (IL 146)
SECTION 106RS-5
PROJECT ACNHPP-0885 (051)
3P - RESURFACING
UNION COUNTY

C-99-052-15

F.A.P. RTE.	SECTION	COUNTY	TOTAL SHEETS	SHEET NO.
146	106RS-5	UNION	19	1
ILLINOIS CONTRACT NO. 78484				

D-99-044-15



LOCATION OF SECTION INDICATED THUS: - [black rectangle] -

FOR INDEX OF SHEETS, SEE SHEET NO 3

STATION EQUATIONS

EQN STA 45+46.40 BK	=	STA 42+27.40 AH
EQN STA 116+39.80 BK	=	STA 114+25.90 AH
EQN STA 152+92.14 BK	=	STA 153+00.00 AH
EQN STA 174+89.63 BK	=	STA 174+98.00 AH
EQN STA 192+89.55 BK	=	STA 193+00.00 AH
EQN STA 247+91.25 BK	=	STA 248+00.42 AH

OMISSIONS

NONE

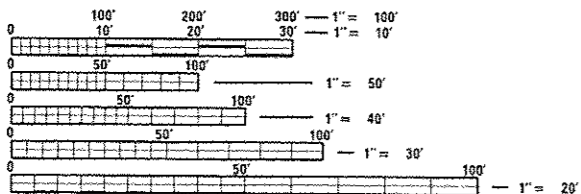
STRUCTURES

2013 TRAFFIC DATA

MP 10.43 TO MP 10.70	ADT = 14,200 WITH 6.2% TRUCKS
MP 10.70 TO MP 14.86	ADT = 5,500 WITH 18.6% TRUCKS
MP 14.86 TO MP 15.14	ADT = 4,550 WITH 18.1% TRUCKS
MP 15.14 TO MP 15.33	ADT = 3,850 WITH 17.9% TRUCKS
MP 15.33 TO MP 19.26	ADT = 2,950 WITH 16.3% TRUCKS
POSTED SPEED = 55 MPH	

TOWNSHIPS

ANNA & STOKES



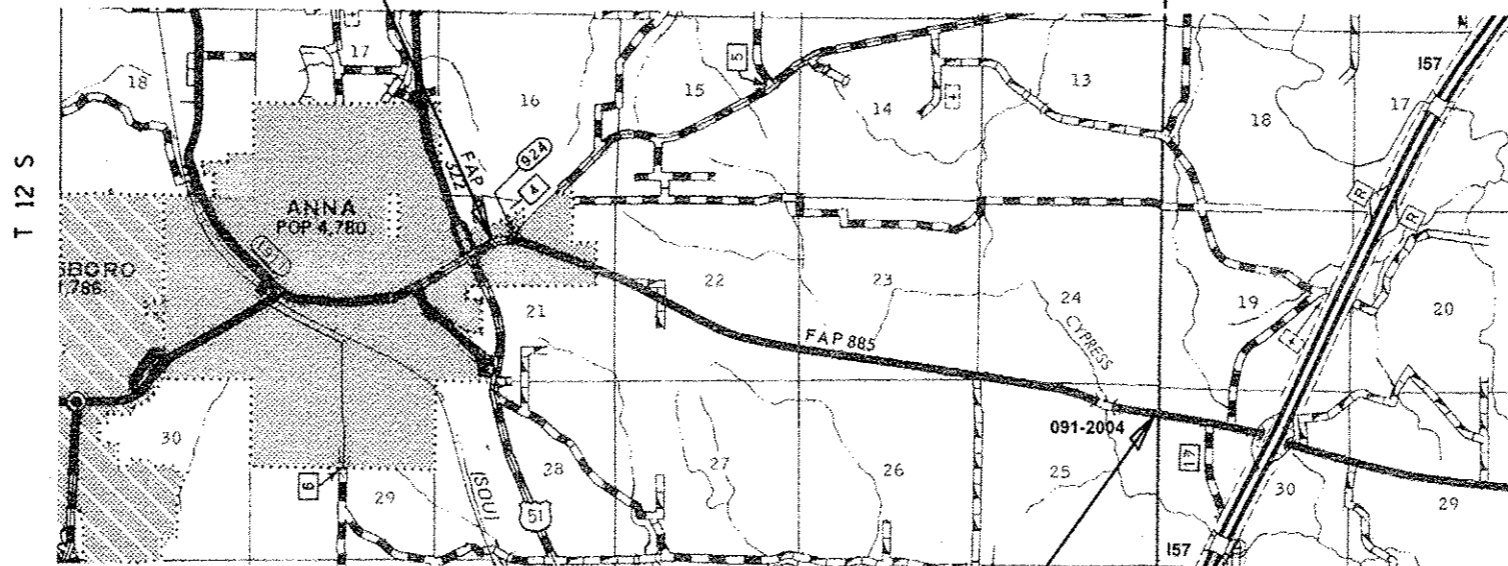
FULL SIZE PLANS HAVE BEEN PREPARED USING STANDARD ENGINEERING SCALES. REDUCED SIZED PLANS WILL NOT CONFORM TO STANDARD SCALES. IN MAKING MEASUREMENTS ON REDUCED PLANS, THE ABOVE SCALES MAY BE USED.

J.U.L.I.E.
JOINT UTILITY LOCATION INFORMATION FOR EXCAVATION
1-800-892-0123
OR 811

PROJECT ENGINEER DARRYL LEFTWICH
PROJECT MANAGER CHARLES STEIN

CONTRACT NO. 78484

PROPOSED PROJECT BEGINS
STATION 32+28 IL 146



PROPOSED PROJECT ENDS
STATION 248+00.42 IL 146



0

GROSS LENGTH = 22,069.47 FT = 4.180 MILE
NET LENGTH = 22,069.47 FT = 4.180 MILE

STATE OF ILLINOIS
DEPARTMENT OF TRANSPORTATION
DIVISION OF HIGHWAYS

SUBMITTED December 9, 2015

[Signature]
DEPUTY DIRECTOR OF HIGHWAYS, REGION ENGINEER

Jan 29, 2016
[Signature]
ENGINEER OF DESIGN AND ENVIRONMENT

Jan 29, 2016
[Signature]
DIRECTOR OF HIGHWAYS, CHIEF ENGINEER

**PRINTED BY THE AUTHORITY
OF THE STATE OF ILLINOIS**

Prepared By:

[Signature]
DISTRICT STUDIES & PLANS ENGINEER

Examined By:

[Signature]
DISTRICT LAND ACQUISITION ENGINEER

Examined By:

[Signature]
DISTRICT PROGRAM DEVELOPMENT ENGINEER

Examined By:

[Signature]
DISTRICT OPERATIONS ENGINEER

Examined By:

[Signature]
DISTRICT PROJECT IMPLEMENTATION ENGINEER

Examined By:

[Signature]
DISTRICT CONSTRUCTION ENGINEER

Examined By:

[Signature]
DISTRICT MATERIALS ENGINEER

FILE NAME :	USER NAME : Lefswichd	DESIGNED -	REVISED -
own\11084810\INTEG.illinois.gov\PI\DOT\Documents\DOT Offices\District 1\Projects\78484		ORAWN\CA\shwts\78484.sht.dgn	REVISED -
	PLOT SCALE : 100.0000 1 / in	CHECKED -	REVISED -
Defaul1	PLOT DATE : 12/8/2015	DATE -	REVISED -

STATE OF ILLINOIS
DEPARTMENT OF TRANSPORTATION

SCALE:	SHEET	OF	SHEETS	STA.	TO STA.	F.A.P. RTE.	SECTION	COUNTY	TOTAL SHEETS	SHEET NO.
						146	106RS-5	UNION	19	2
CONTRACT NO. 78484										
ILLINOIS FED. AID PROJECT										

SHEET NO	DESCRIPTION
1	COVER SHEET
2	SIGNATURE SHEET
3	INDEX OF SHEETS, STANDARDS, AND MIX DESIGNS
4	GENERAL NOTES, COMMITMENTS
5-7	SUMMARY OF QUANTITIES
8-9	TYPICAL SECTIONS
10	PAVEMENT RESURFACING SCHEDULE
11	PAVEMENT MARKING SCHEDULE
12	SIDE ROAD AND ENTRANCE SCHEDULE
13-15	PAVEMENT MARKING PLAN SHEETS
16	DETAILS: MILLING TRANSITIONS & BUTT JOINT
17-18	SIDEROAD AND ENTRANCE DETAILS
19	DISTRICT STANDARDS

HIGHWAY STANDARDS

- 000001-06 Standard Symbols Abbreviations & Patterns
- 001006 Decimal of Inch & Foot
- 442201-03 Class C & D Patches
- 701001-02 Off Rd Op - 2L2W -15ft Min From EOP
- 701006-05 Off Rd Op - 2L2W - 15ft To EOP
- 701011-04 Off Rd Moving Op - 2L2W - Day Only
- 701301-04 Ln Closure 2L2W - Short Time Op
- 701306-03 Ln Closure 2L2W - Slow Move Op Day Only 45 MPH Or More
- 701311-03 Ln Closure 2L2W - Moving Op Day Only
- 701336-06 Ln Closure 2L2W - Work Areas In Series 45 MPH Or More
- 701602-07 Urban Ln Closure Multi Ln 2W With Bidirect Left Turn Ln
- 701701-09 Urban Ln Closure Multi Ln Intersection
- 701901-04 Traf Cntrl Devices
- 780001-05 Typical Pvmt Mrkings
- 781001-03 Typical App Raised Reflc Pvmt Mrkrs

HMA MIXTURE REQUIREMENTS

Locations	Hot-Mix Asphalt Surface Course
Mixture Use(s):	Hot-Mix Asphalt Surface Course, Mix D, N90
AC/PG:	PG64-22
ABR % (Max):	See Special Provision
Design Air Voids:	4.0 %, 90 Gyration Design
Mixture Composition: (Gradation Mixture)	IL-9.5 mm
Friction Aggregate:	D Surface
Quality Management Program:	QCP

Locations	Hot-Mix Asphalt Leveling Binder Course
Mixture Use(s):	Hot-Mix Asphalt Leveling Binder, N90, IL-9.5mm Fine Grade
AC/PG:	PG64-22
ABR % (Max):	See Special Provision
Design Air Voids:	4.0 %, 90 Gyration Design
Mixture Composition: (Gradation Mixture)	IL-9.5mm Fine Grade
Friction Aggregate:	None
Quality Management Program:	QCP

Locations	Pavement Patching
Mixture Use(s):	Hot-Mix Asphalt Binder Course, N90, IL-19.0mm
AC/PG:	PG64-22
ABR % (Max):	See Special Provision
Design Air Voids:	4.0 %, 90 Gyration Design
Mixture Composition: (Gradation Mixture)	IL-19.0mm
Friction Aggregate:	None
Quality Management Program:	QC/OA

Locations	Incidental Hot-Mix Asphalt Surfacing
Mixture Use(s):	Hot-Mix Asphalt Surface Course, Mix C, N70
AC/PG:	PG64-22
ABR % (Max):	See Special Provision
Design Air Voids:	4.0 %, 70 Gyration Design
Mixture Composition: (Gradation Mixture)	IL-9.5 mm
Friction Aggregate:	C Surface
Quality Management Program:	QC/OA

GENERAL NOTES

THE THICKNESS OF THE HOT-MIX ASPHALT MIXTURE SHOWN ON THE PLANS IS THE NOMINAL THICKNESS. DEVIATIONS FROM THE NOMINAL THICKNESS WILL BE PERMITTED WHEN SUCH DEVIATIONS OCCUR DUE TO IRREGULARITIES IN THE EXISTING SURFACE OR BASE ON WHICH THE HOT-MIX ASPHALT MIXTURE IS PLACED.

FACTORS USED FOR ESTIMATING PLAN QUANTITIES ARE AS FOLLOWS AND SHALL NOT BE USED FOR THE BASIS OF FINAL QUANTITIES.

ALL HOT-MIX ASPHALT	2.016 TON/CU YD
ALL AGGREGATE	2.05 TON/CU YD

ATTAINMENT OF PROPER CROWN OR SUPERELEVATION SHALL BE FULLY ACCOMPLISHED WITH THE HOT-MIX ASPHALT SURFACE REMOVAL.

THERE ARE NO AVAILABLE WASTESITES WITHIN THE PROJECT'S LIMITS .
THERE ARE NO AGREEMENTS.

UNLESS OTHERWISE DIRECTED BY THE ENGINEER, RESURFACING SHALL BE PLACED IN A SEQUENCE THAT WILL MINIMIZE THE TIME THE CENTERLINE EDGE IS EXPOSED TO TRAFFIC. WHEN AT THE END OF A DAY'S OPERATION THE EXPOSED CENTERLINE EDGE IS GREATER THAN 2,000 FT., THE CONTRACTOR SHALL BE REQUIRED TO PAVE IN THE ADJACENT LANE ON THE FOLLOWING WORK DAY. PRIOR TO WINTER SHUT DOWN, RESURFACING ON ADJACENT LANES IS TO BE BROUGHT UP TO THE SAME ELEVATION.

THE QUANTITY OF SHORT TERM PAVEMENT MARKING SHOWN IN THE PLANS IS BASED ON ONE APPLICATION EACH FOR THE HMA SURFACE REMOVAL, BINDER COURSE, AND SURFACE COURSE.

PRIOR TO PLACEMENT OF THE FINAL PAVEMENT MARKINGS THE RESIDENT ENGINEER SHALL CONTACT THE BUREAU OF OPERATIONS AND ARRANGE FOR INSPECTION AND APPROVAL OF THE PAVEMENT MARKING LAYOUT.

QUANTITIES SHOWN IN THE PLANS FOR PATCHING ARE ESTIMATES. THE ACTUAL AMOUNT OF PATCHING REQUIRED SHALL BE DETERMINED BY THE ENGINEER. SURVEY DATE 11/24/2015

THE CONTRACTOR SHALL STAMP STATIONING IN THE HOT-MIX ASPHALT SURFACE AT 300 FT. INTERVALS ALTERNATING SIDES ON THE OUTSIDE EDGE OF PAVEMENT AND AS DIRECTED BY THE ENGINEER. THE STATION SYMBOL STAMPS USED SHALL BE FURNISHED BY THE CONTRACTOR. THEY SHALL BE 5 1/2 IN. TALL OF A DESIGN APPROVED BY THE ENGINEER, AND SHALL REMAIN THE PROPERTY OF THE CONTRACTOR.

MTD CROSSING RESTRICTIONS TABLE

SN & CENTERLINE STATION FAP 885 (IL 146)	TYPE (RISE x SPAN)	CONDITION RATING	EXISTING FILL HEIGHT OVER STR	EXISTING PVMT THICKNESS OVER STR	MTD CROSSING RESTRICTIONS
			FOOT	FOOT	
SN 091-7047 (STA 69+60, MP 11.29)	2x5 BOX	7	3.2	14.5"	None (CLEAR SPAN < 6')
SN 091-7048 (STA 91+67, MP 11.72)	6x5 BOX	7	1.4	14.5"	None (CLEAR SPAN < 6')
SN 091-7049 (STA 201+80, MP 13.84)	5x10 BOX	7	4.8	14.5"	None (FILL HEIGHT > 2')
SN 091-2004 (STA 222+93, MP 14.25)	TRIPLE 10x10 BOX	6	4.4	14.5"	PENDING

FILE NAME =	USER NAME = Lefswichol	DESIGNED -	REVISED -	STATE OF ILLINOIS DEPARTMENT OF TRANSPORTATION	SCALE:	SHEET	OF	SHEETS	STA.	TO STA.	F.A.P. RTE.	SECTION	COUNTY	TOTAL SHEETS	SHEET NO.	
Default	Documents\DOT Offices\District 9\Projects\78484\Drawings\CAD\Sheet\78484.dgn	CHECKED -	REVISED -		146							106RS-5	UNION	19	4	
	PLOT SCALE = 1/8" = 1' / 3/4"	DATE -	REVISED -													
	PLOT DATE = 12/12/2015														CONTRACT NO. 78484	

ILLINOIS FED. AID PROJECT

SUMMARY OF QUANTITIES

CODE NUMBER	ITEM DESCRIPTION	UNIT	TOTAL QUANTITY	Union (181)	
				URBAN ROADWAY 0005	RURAL ROADWAY 0005
40600275	BITUMINOUS MATERIALS (PRIME COAT)	POUND	47,720	15,192	32,528
40600647	LEVELING BINDER (MACHINE METHOD), IL-9.5FG, N90	TON	2,915	924	1,991
40600982	HOT-MIX ASPHALT SURFACE REMOVAL - BUTT JOINT	SO YD	825	639	186
40600990	TEMPORARY RAMP	SO YD	87	72	15
40603345	HOT-MIX ASPHALT SURFACE COURSE, MIX "D", N90	TON	5,823	1,844	3,979
40800050	INCIDENTAL HOT-MIX ASPHALT SURFACING	TON	158	68	90
44000153	HOT-MIX ASPHALT SURFACE REMOVAL, 1"	SO YD	59,105	11,761	47,344
44000158	HOT-MIX ASPHALT SURFACE REMOVAL, 2 1/4"	SO YD	10,128	10,128	
44200180	PAVEMENT PATCHING, TYPE II, 15 INCH	SO YD	1,901	847	1,054
44200184	PAVEMENT PATCHING, TYPE III, 15 INCH	SO YD	277	56	221
44200186	PAVEMENT PATCHING, TYPE IV, 15 INCH	SO YD	190	103	87
48102100	AGGREGATE WEDGE SHOULDER, TYPE B	TON	783	158	625

12

FILE NAME =	USER NAME = Leftwichd	DESIGNED -	REVISED -	STATE OF ILLINOIS DEPARTMENT OF TRANSPORTATION		F.A.P. RTE. =	SECTION	COUNTY	TOTAL SHEETS	SHEET NO.
ow\11804EBIDINTEG.illinois.gov\PKIDDT\	uments\IDOT Office\District 9\Projects\78484\Drawings\CD\Sheets\78484.sht.dgn	DRAWN -	REVISED -		146	106RS-5	UNION	19	5	
Default	PLOT SCALE = 1/8" = 1'-0"	CHECKED -	REVISED -		SCALE: SHEET OF SHEETS STA. TO STA.		CONTRACT NO. 78484		ILLINOIS FED. AID PROJECT	
	PLOT DATE = 12/18/2015	DATE -	REVISED -							

SUMMARY OF QUANTITIES - CONT

COUNTY:	Union (181)	Union (181)
ROUTE:	FAP 885, IL 146	FAP 885, IL 146
FUNDING:	80% FEDERAL 20% STATE	80% FEDERAL 20% STATE
LOCATION:	URBAN	RURAL
TOTAL QUANTITY	ROADWAY 0005	ROADWAY 0005

CODE NUMBER	ITEM DESCRIPTION	UNIT	TOTAL QUANTITY	URBAN ROADWAY 0005	RURAL ROADWAY 0005
67000500	ENGINEER'S FIELD OFFICE, TYPE B	CAL MO	4	1	3
67100100	MOBILIZATION	LSUM	1	0	1
70100460	TRAFFIC CONTROL AND PROTECTION, STANDARD 701306	LSUM	1		1
70100600	TRAFFIC CONTROL AND PROTECTION, STANDARD 701336	LSUM	1		1
70102632	TRAFFIC CONTROL AND PROTECTION, STANDARD 701602	LSUM	1	1	
70102635	TRAFFIC CONTROL AND PROTECTION, STANDARD 701701	LSUM	1	1	
70106800	CHANGEABLE MESSAGE SIGN	CAL MO	1	0.5	0.5
70300100	SHORT TERM PAVEMENT MARKING	FOOT	7,809	2,892	4,917
70300210	TEMPORARY PAVEMENT MARKING LETTERS AND SYMBOLS	SQ FT	177	177	
70300220	TEMPORARY PAVEMENT MARKING - LINE 4"	FOOT	82,200	20,814	61,386
70300260	TEMPORARY PAVEMENT MARKING - LINE 12"	FOOT	486	486	
70300280	TEMPORARY PAVEMENT MARKING - LINE 24"	FOOT	76	76	

12

SUMMARY OF QUANTITIES - CONT

COUNTY:	Union (181)	Union (181)
ROUTE:	FAP 885, IL 146	FAP 885, IL 146
FUNDING:	80% FEDERAL 20% STATE	80% FEDERAL 20% STATE
LOCATION:	URBAN	RURAL
TOTAL QUANTITY	ROADWAY 0005	ROADWAY 0005

CODE NUMBER	ITEM DESCRIPTION	UNIT	TOTAL QUANTITY	URBAN ROADWAY 0005	RURAL ROADWAY 0005
70301000	WORK ZONE PAVEMENT MARKING REMOVAL	SO FT	30,368	8,267	22,101
* 78000100	THERMOPLASTIC PAVEMENT MARKING - LETTERS AND SYMBOLS	SO FT	177	177	
* 78000200	THERMOPLASTIC PAVEMENT MARKING - LINE 4"	FOOT	5,393	5,393	
* 78000600	THERMOPLASTIC PAVEMENT MARKING - LINE 12"	FOOT	486	486	
* 78000650	THERMOPLASTIC PAVEMENT MARKING - LINE 24"	FOOT	76	76	
* 78001110	PAINT PAVEMENT MARKING - LINE 4"	FOOT	76,809	15,421	61,388
* 78100100	RAISED REFLECTIVE PAVEMENT MARKER	EACH	645	235	410
78300200	RAISED REFLECTIVE PAVEMENT MARKER REMOVAL	EACH	645	235	410
88600100	DETECTOR LOOP, TYPE I	FOOT	400	400	
Z0034105	MATERIAL TRANSFER DEVICE	TON	8,738	2,768	5,970

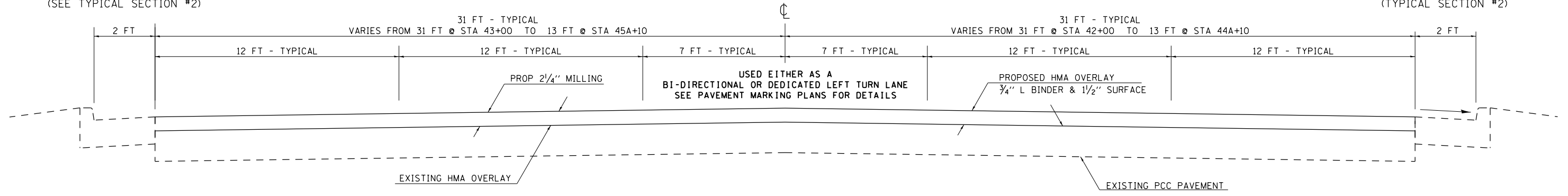
10

* SPECIALTY ITEM

TYPICAL SECTION #1

LT STA 45A+08
CURB & GUTTER ENDS
AGGREGATE WEDGE SHOULDER BEGINS
(SEE TYPICAL SECTION #2)

RT STA 44A+74
CURB & GUTTER ENDS
AGGREGATE WEDGE SHOULDER BEGINS
(TYPICAL SECTION #2)



TO BE USED
STA 32+28.00 TO STA 45A+20.00*

PAVEMENT MARKING

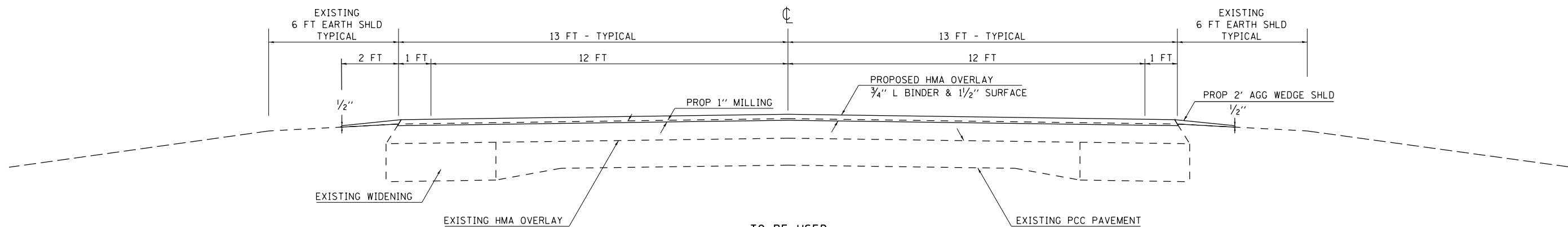
FOR PROPOSED PAVEMENT STRIPING, SEE PAVEMENT MARKING PLAN SHEETS
STA 45A+15 AND BACK: TO BE RE-STRIPED USING THERMOPLASTIC PAVEMENT MARKING
STA 45A+15 AND AHEAD: TO BE RE-STRIPED USING PAINT PAVEMENT MARKING

STATION EQUATIONS
STA 45+46.40 BK = STA 42+27.40 AH

- STA 46A+08 TO STA 46A+20
MILLING DEPTH TRANSITION
FROM 1 1/2" TO 1"
INCLUDED IN HMA SURFACE REMOVAL 1 1/2"
SEE TRANSITION DETAIL

FILE NAME =	USER NAME = Leftwichdl	DESIGNED -	REVISED -	STATE OF ILLINOIS DEPARTMENT OF TRANSPORTATION	SCALE:	SHEET	OF	SHEETS	STA.	TO STA.	F.A.P. RTE.	SECTION	COUNTY	TOTAL SHEETS	SHEET NO.		
pw:\IL\084EBIDINTEG.illinois.gov\PWIDOT\Documents\IDOT Offices\District 9\Projects\78484\Drawings\CAD\Drawings\78484.sht.dgn											146	106RS-5	UNION	19	8		
PLOT SCALE = 100.0000' / 1".											CHECKED -	CONTRACT NO. 78484					
PLOT DATE = 12/10/2015											DATE -	ILLINOIS FED. AID PROJECT					

TYPICAL SECTION #2



TO BE USED
 STA 45A+20.00 TO STA 248+00.42

STATION EQUATIONS
 STA 116+39.80 BK = STA 114+25.90 AH
 STA 152+92.14 BK = STA 153+00.00 AH
 STA 174+89.63 BK = STA 174+98.00 AH
 STA 192+89.55 BK = STA 193+00.00 AH
 STA 247+91.25 BK = STA 248+00.42 AH

FILE NAME =	USER NAME = Leftwichdl	DESIGNED -	REVISED -	STATE OF ILLINOIS DEPARTMENT OF TRANSPORTATION	F.A.P. RTE.	SECTION	COUNTY	TOTAL SHEETS	SHEET NO.
pw:\IL\084EBIDINTEG.illinois.gov\PWIDOT\Documents\IDOT Offices\District 9\Projects\78484\Drawings\CAD\Drawings\78484.sht.dgn		CHECKED -	REVISED -		146	106RS-5	UNION	19	9
Default	PLOT SCALE = 100.0000' / 1in.	DATE -	REVISED -		SCALE: SHEET OF SHEETS STA. TO STA.			CONTRACT NO. 78484	
	PLOT DATE = 12/10/2015				ILLINOIS FED. AID PROJECT				

PAVING SCHEDULE FOR IL 146 - UNION CO

IL 146			LENGTH (INFO ONLY)	HMA SURF REMOVAL 2 1/4"	HMA SURF REMOVAL 1"	HMA SURF REMOVAL BUTT - JT **	HMA L BINDER 3/4"	HMA SURF CSE 1 1/2"	BIT MATLS PR CT **	AGG WEDGE SHLD TYPE B	TEMP RAMP	
550' EAST OF US 51	TO	0.9 MILE EAST OF 157										
STA	TO	STA	FEET	SQ YD	SQ YD	SQ YD	TONS	TONS	LB	TON	SQ YD	
<u>IL-146</u>												
STA	32+28.00	TO STA	32+93.00	65.00	535		23	45	362		72	
STA	32+93.00	TO STA	42+00.00	907.00	6249		263	525	4219			
STA	42+00.00	TO STA	43+00.00	100.00	686		29	58	464			
STA	43+00.00	TO STA	44+00.00	100.00	664		28	56	449			
STA	44+00.00	TO STA	45+00.00	100.00	608		26	52	411			
STA	45+00.00	TO STA	45+46.40	46.40	254		11	22	172			
EQ STA	45+46.40 BK	TO STA	42+27.40 AH									
STA	42+27.40	TO STA	43+00.00	72.60	352		15	30	238			
STA	43+00.00	TO STA	44+00.00	100.00	397		17	34	268			
STA	44+00.00	TO STA	45+08.00	108.00	348		15	30	235	1		
STA	45+08.00	TO STA	45+20.00	12.00	35		2	3	24	1		
STA	45+20.00	TO STA	46+63.99	143.99		416	18	35	281	6		
STA	46+63.99	TO STA	85+91.00 *	3927.01		11345	477	954	7658	150		
STA	85+91.00	TO STA	116+39.80	3048.80		8808	370	740	5946	116		
EQ STA	116+39.80 BK	TO STA	114+25.90 AH									
STA	114+25.90	TO STA	152+92.14	3866.24		11170	470	939	7540	147		
EQ STA	152+92.14 BK	TO STA	153+00.00 AH									
STA	153+00.00	TO STA	174+89.63	2189.63		6326	266	532	4271	84		
EQ STA	174+89.63 BK	TO STA	174+98.00 AH									
STA	174+98.00	TO STA	192+89.55	1791.55		5176	218	435	3494	69		
EQ STA	192+89.55 BK	TO STA	193+00.00 AH									
STA	193+00.00	TO STA	247+91.25	5491.25		15864	667	1333	10709	209	15	
EQ STA	247+91.25 BK	TO STA	248+00.42 AH									
PROJECT TOTALS					10128	59105	0	2915	5823	46741	783	87

URBAN ENDS, RURAL BEGINS

SEE SIDE ROAD AND ENTRANCE RESURFACING SCHEDULE FOR ADDITIONAL QUANTITIES

PAVEMENT MARKING SCHEDULE

THERMOPLASTIC PAVEMENT MARKING											
IL-146			SOLID WHITE 4" EDGE LINES	SOLID WHITE 4" LANE LINES	SKIP DASH WHITE 4" LANE LINES	SKIP DASH YELLOW 4"	SOLID YELLOW 4"	SOLID WHITE 12" DIAG HASH	SOLID YELLOW 12" DIAG HASH	SOLID WHITE 24" STOP BAR	LETTERS AND SYMBOLS
			STA	TO	STA	FT	FT	FT	FT	FT	FT
STA 32+28.00	TO	STA 33+16.00		176.0	44.0		176.0			14	36.4
STA 33+16.00	TO	STA 33+35.00		38.0	9.5					24	
STA 33+35.00	TO	STA 34+04.00									
STA 34+04.00	TO	STA 34+21.00		17.0	8.5					24	
STA 34+21.00	TO	STA 35+45.00		124.0	62.0		248.0			14	36.4
STA 35+45.00	TO	STA 36+45.00			50.0		200.0				
STA 36+45.00	TO	STA 37+55.00			55.0	55.0	220.0				31.2
STA 37+55.00	TO	STA 39+65.00			105.0		840.0		165		
STA 39+65.00	TO	STA 41+00.00		135.0	67.5		270.0				36.4
STA 41+00.00	TO	STA 41+85.00			10.0						
STA 41+85.00	TO	STA 42+70.00		115.0	31.3		170.0				36.4
STA 42+70.00	TO	STA 43+05.00		70.0	8.8	8.8	35.0	8			
STA 43+05.00	TO	STA 43+60.00		110.0	27.5		110.0	35			
STA 43+60.00	TO	STA 45+46.40		372.8			745.6	135	85		
EQ STA 45+46.40BK	TO	STA 42+27.40 AH									
STA 42+27.40	TO	STA 42+50.00		45.2			90.4	13			
STA 42+50.00	TO	STA 43+56.00		212.0			212.0	45			
STA 43+56.00	TO	STA 44+15.00					118.0				
THERMOPLASTIC PAVEMENT MARKING TOTALS			0.0	1415.0	451.5	91.3	3435.0	236.0	250.0	76.0	176.8
						5392.8		486.0			
PAINT PAVEMENT MARKING											
STA	TO	STA	FT	FT	FT	FT	FT	FT	FT	FT	SO FT
STA 44+15.00	TO	STA 44+78.00	63.0			15.8	63.0				
STA 44+78.00	TO	STA 48+80.00	804.0			100.5	402.0				
STA 48+80.00	TO	STA 49+80.00	200.0				200.0				
STA 49+80.00	TO	STA 59+50.00	1940.0			242.7	970.0				
STA 59+50.00	TO	STA 85+91.00	5282.0				5282.0				
STA 85+91.00	TO	STA 116+39.80	6097.6				6097.6				
EQ STA 116+39.80BK	TO	STA 114+25.90 AH									
STA 114+25.90	TO	STA 127+90.00	2728.2				2728.2				
STA 127+90.00	TO	STA 137+30.00	1880.0			235.0	940.0				
STA 137+30.00	TO	STA 142+25.00	990.0								
STA 142+25.00	TO	STA 152+20.00	1990.0			248.8	995.0				
STA 152+20.00	TO	STA 152+92.14	144.3				144.3				
EQ STA 152+92.14BK	TO	STA 153+00.00 AH									
STA 153+00.00	TO	STA 167+75.00	2950.0				2950.0				
STA 167+75.00	TO	STA 174+89.63	1429.3			178.7	714.6				
EQ STA 174+89.63BK	TO	STA 174+98.00 AH									
STA 174+98.00	TO	STA 175+40.00	84.0			10.5	42.0				
STA 175+40.00	TO	STA 177+45.00	410.0				410.0				
STA 177+45.00	TO	STA 184+45.00	1400.0			175.0	700.0				
STA 184+45.00	TO	STA 192+89.55	1689.1				1689.1				
EQ STA 192+89.55BK	TO	STA 193+00.00 AH									
STA 193+00.00	TO	STA 239+50.00	9300.0				9300.0				
STA 239+50.00	TO	STA 247+91.25	1682.6			210.3	841.3				
EQ STA 247+91.25BK	TO	STA 248+00.42 AH									
EDGE LINE GAPS @ SIDE ROADS AND RAMP											
SR	STA	49+06.00	RT	-48.0							
SR	STA	52+81.50	RT	-54.0							
SR	STA	55+88.00	RT	-42.0							
PAINT PAVEMENT MARKING & PROJECT TOTALS			40921	0	0	1418	34470	0	0	0	0
						76809.0		0.0			

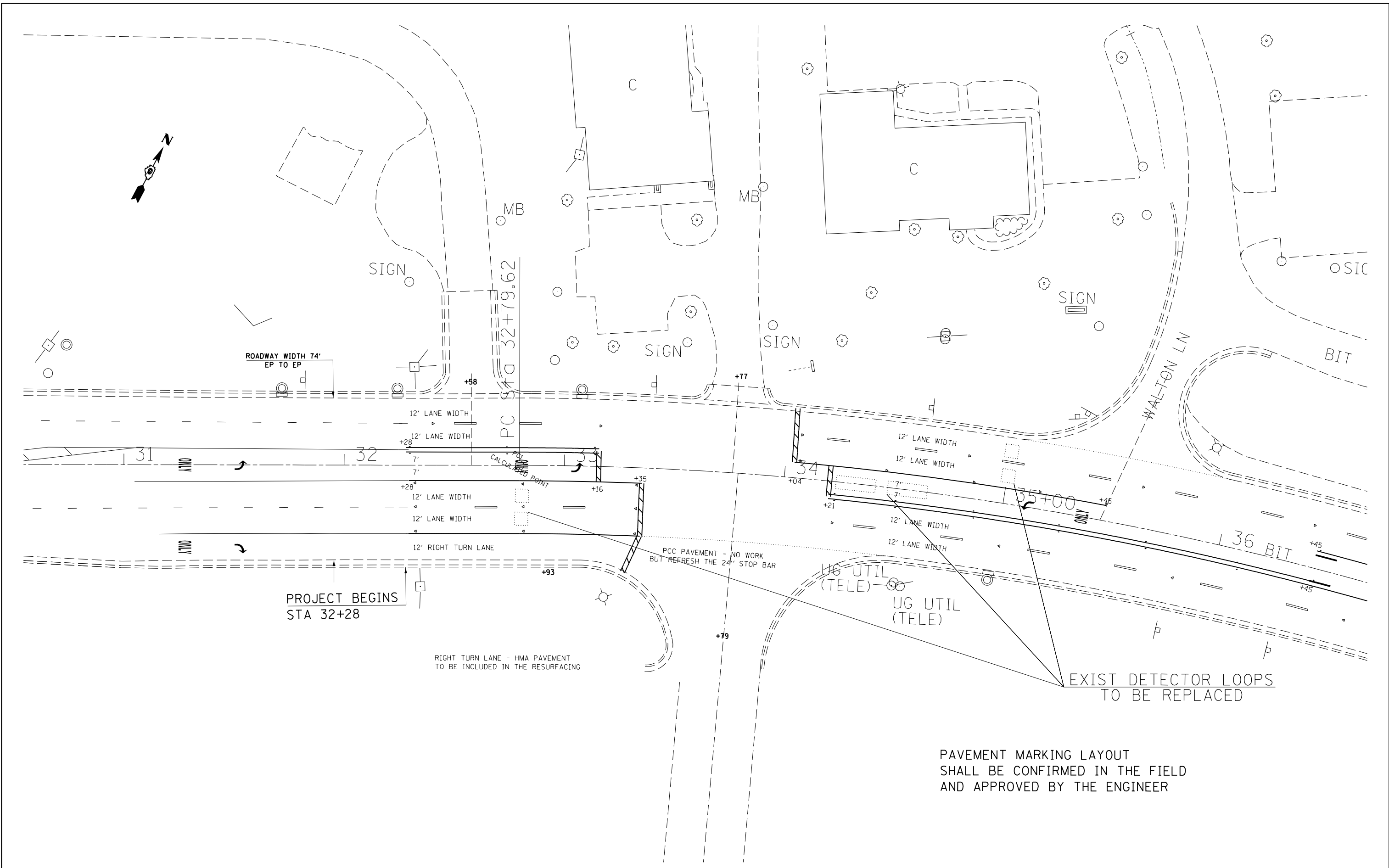
* Sta 85+91: URBAN SECTION ENDS, RURAL SECTION BEGINS

TEMP PVMT MRK				SHORT TERM PVMT MRK	WORK ZONE PAVT MK REM	RAISED REFLECTIVE PAVT MKRS		RAISED REFL PAVT MKR REMOVAL
4"	12"	24"	LETTERS AND SYMBOLS			SINGLE CRSTL	DOUBLE AMBER	
FT	FT	FT	FT	FT	SO FT	EACH	EACH	EACH
396.0		14	36.4	106	208.3	8	6	14
47.5		24		23	31.4	3		3
				0	0.0			
25.5		24		20	23.3	2		2
434.0		14	36.4	149	235.3	7	8	15
250.0				120	123.3	3	7	10
330.0			31.2	132	185.2	3	4	7
945.0	165			252	454.0	5	12	17
472.5			36.4	162	247.9	3	6	9
10.0				102	37.3	1		1
316.3			36.4	102	175.8	7	6	13
122.5	8			42	57.5	1	1	2
247.5	35			66	116.2	4	3	7
1118.4	220			224	520.7	10	10	20
					0.0			
135.6	13			27	58.6	1		1
424.0	45			95	188.1	5	3	8
118.0				18	45.2		1	1
141.8				19	53.6		2	2
1306.5				121	475.7		10	10
400.0				30	143.3		3	3
3152.7				291	1147.9		24	24
10564.3				792	3786.1		66	66
12195.2				915	4369.9		76	76
					0.0			
5456.4				409	1955.2		34	34
3055.0				282	1112.3		24	24
990.0				149	379.5		12	12
3233.8				299	1177.4		25	25
288.6				22	103.4		2	2
					0.0			
5900.0				443	2114.2		37	37
2322.5				214	845.6		18	18
					0.0			
136.5				13	49.7		1	1
820.0				62	293.8		5	5
2275.0				210	828.3		18	18
3378.2				253	1210.5		21	21
					0.0			
18600.0				1395	6665.0		116	116
2734.2				252	995.5		21	21
					0.0			
-48.0					-16.0			
-54.0					-18.0			
-42.0					-14.0			
82200	486	76	177	7809	30368	63	582	645
							645	

SIDEROAD & ENTRANCE RESURFACING SCHEDULE

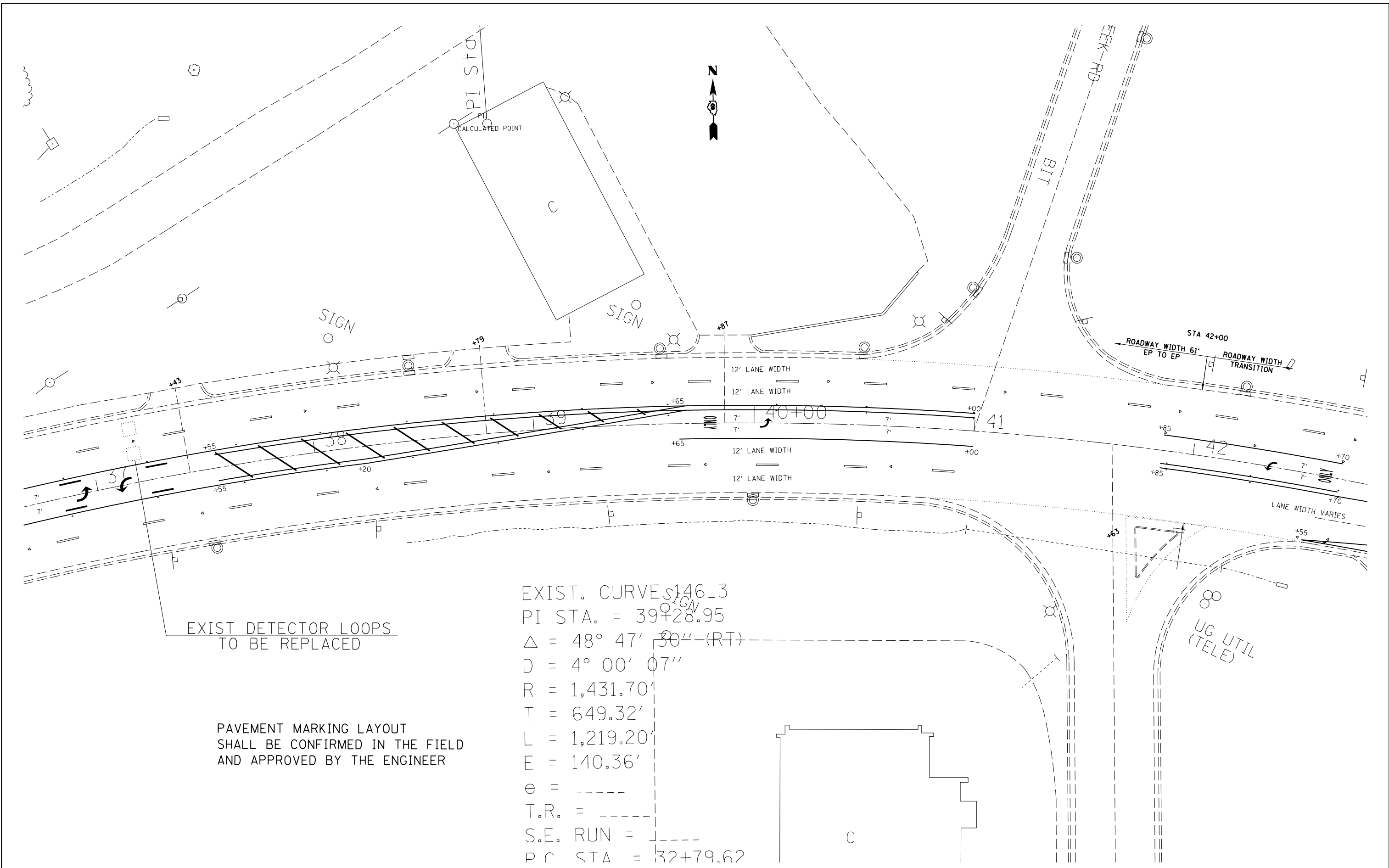
NAME	STATION	BIT MAT (PR CT)		INCIDENTAL HMA SURF	HMA SURF REMOVAL BUTT - JT
		LB	TON	TON	SO YD
URBAN					
CEL	LT 32+58.0				
CEL	LT 33+77.0				
LEIGH AVE	SRR RT 33+79.0				
WALTON LN	SRL LT 35+45.0				
CEL	LT 37+43.0				
CEL	LT 38+79.0				
CEL	LT 39+87.0				
LICK CREEK RD	SRL LT 41+00.0				
LEIGH AVE	SRR RT 41+63.0				
CEL	LT 43+12.0				
CER	RT 43+12.0				
CEL	LT 42A+88.0				
PELICAN DR	SRR RT 43A+82.0				
CEL	LT 44A+47.0				
CEL	LT 45+70.0				
(• PAVEMENT WIDTH VARIES •)					
CC & G ENDS	46+10.0				
(• 26' PAVEMENT •)					
CEL	LT 46+65.0	9	2		
CEL	LT 48+12.0	4	1		
DIVISION ST	SRR RT 49+06.0	32	5	70	
CEL	LT 50+53.0	6	1		
DENNY DR	SRL LT 51+33.0	55	9	122	
STORK ST	SRR RT 52+82.0	40	7	89	
MALLARD LN	SRR RT 55+88.0	39	7	87	
CEL	LT 61+42.0	36	4		
FEL	LT 63+30.0	8	1		
PER	RT 63+70.0	5	1		
CEL	LT 65+82.0	15	2		
CEL	LT 69+34.0	6	1		
PER	RT 72+70.0	9	1		
CEL	LT 74+51.0	6	1		
FEL	LT 75+75.0	3	1		
PER	RT 76+93.0	6	1		
PER	RT 79+23.0	9	2		
SRL	LT 79+32.0	41	7	90	
SRL	LT 85+91.0	35	6	77	
HICKORY LANE	SRR RT 85+91.0	47	8	104	
RURAL					
PER	RT 92+74.0	10	2		
CEL	LT 101+54.0	10	2		
DEER DR	PER RT 102+40.0	17	2		
CEL	LT 110+83.0	6	1		
FAWN DR	PER RT 111+27.0	14	2		
PER	RT 112+27.0	7	1		
CEL	LT 113+00.0	6	1		
PER	RT 113+06.0	10	2		
POOLE LN	SRR RT 113+78.0	45	7	99	
CEL	LT 116+97.0	7	1		
CER	RT 119+55.0	9	1		
CEL	LT 124+12.0	9	1		
PER	RT 125+92.0	11	2		
PER	RT 126+60.0	7	1		
PER	RT 134+48.0	8	1		
DILLOW LN	PER RT 137+54.0	7	1		
PER	RT 143+46.0	15	2		

NAME	STATION	BIT MAT (PR CT)		INCIDENTAL HMA SURF	HMA SURF REMOVAL BUTT - JT
		LB	TON	TON	SO YD
PER	RT 145+90.0	13	2		
DBL PER	RT 152+75.0	37	5		
CEL	LT 152+97.0	10	2		
WINSLOW LN	PER RT 155+55.0	12	2		
FEL	LT 159+26.0	11	2		
PER	RT 160+04.0	12	2		
CEL	LT 166+90.0	6	1		
PER	RT 168+30.0	11	2		
CEL	LT 169+15.0	10	2		
PER	RT 169+15.0	9	1		
PER	RT 173+83.0	10	2		
CEL	LT 178+02.0	7	1		
HESS SCHOOL LN	SRR RT 182+82.0	39	7	87	
CEL	LT 184+82.0	10	2		
CEL	LT 187+85.0	6	1		
PER	RT 189+64.0	6	1		
PER	RT 190+45.0	7	1		
FER	RT 192+66.0	10	2		
CEL	LT 196+82.0	7	2		
PER	RT 205+86.0	6	1		
CEL	LT 208+26.0	10	2		
PER	RT 208+56.0	5	1		
PER	RT 210+04.0	6	1		
FER	RT 211+90.0	7	1		
PER	RT 216+28.0	8	1		
CEL	LT 216+80.0	7	1		
PER	RT 221+90.0	8	1		
CEL	LT 223+40.0	7	1		
PER	RT 224+95.0	7	1		
SHAWNEE MEADOWS LN	CEL LT 225+97.0	13	2		
FER	RT 236+50.0	7	1		
CEL	LT 238+69.0	7	1		
CEL	LT 242+85.0	18	2		
CEL	LT 244+69.0	14	2		
FEL	LT 246+48.0	7	1		
(• 26' PAVEMENT •)					
PROJECT ENTRANCE TOTALS		979	158	825	



PAVEMENT MARKING LAYOUT
SHALL BE CONFIRMED IN THE FIELD
AND APPROVED BY THE ENGINEER

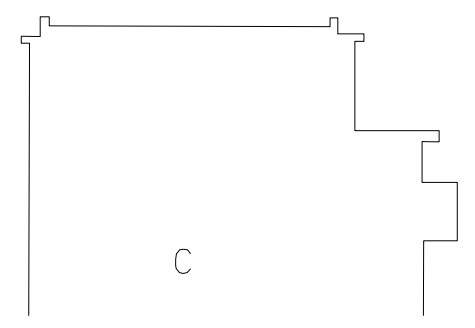
FILE NAME =	USER NAME = Leftwichdl	DESIGNED -	REVISED -	STATE OF ILLINOIS DEPARTMENT OF TRANSPORTATION	SCALE:	SHEET	OF	SHEETS	STA.	TO STA.	F.A.P. RTE.	SECTION	COUNTY	TOTAL SHEETS	SHEET NO.	
pw:\1\084EBIDINTEG.illinois.gov\PWIDOT\Documents\IDOT Offices\District 9\Projects\78484\Drawings\CADsheets\78484.pmk.sht.dgn	DRAWN	REVISED -	REVISED -								146	106RS-5	UNION	19	13	
Default	PLOT SCALE = 40.0000' / in.	CHECKED -	REVISED -								CONTRACT NO. 78484					
	PLOT DATE = 12/10/2015	DATE -	REVISED -								ILLINOIS FED. AID PROJECT					



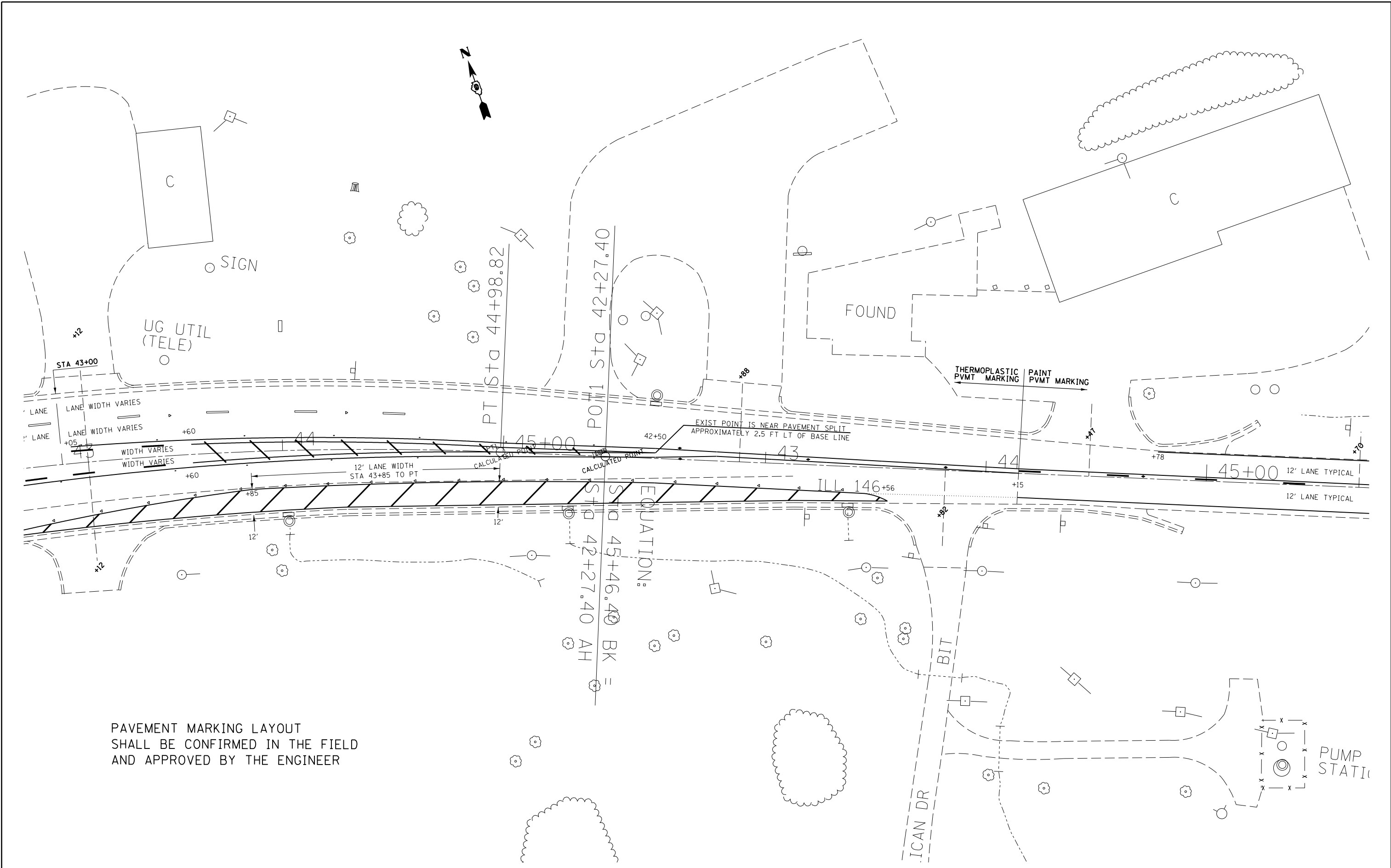
EXIST DETECTOR LOOPS
TO BE REPLACED

PAVEMENT MARKING LAYOUT
SHALL BE CONFIRMED IN THE FIELD
AND APPROVED BY THE ENGINEER

EXIST. CURVE S146_3
 PI STA. = 39+28.95
 $\Delta = 48^\circ 47' 30''$ (RT)
 $D = 4^\circ 00' 07''$
 $R = 1,431.70'$
 $T = 649.32'$
 $L = 1,219.20'$
 $E = 140.36'$
 $e = \text{-----}$
 $T.R. = \text{-----}$
 $S.E. \text{ RUN} = \text{-----}$
 $P.C. \text{ STA} = 32+79.62$



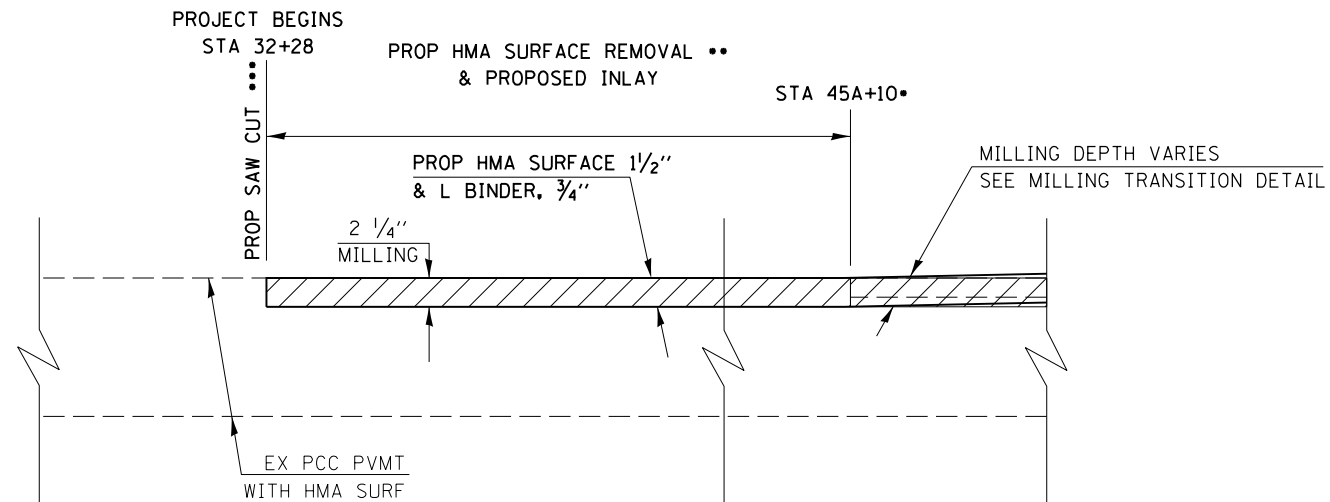
FILE NAME =	USER NAME = Leftwichdl	DESIGNED -	REVISED -	STATE OF ILLINOIS DEPARTMENT OF TRANSPORTATION	SCALE:	SHEET	OF	SHEETS	STA.	TO STA.	F.A.P. RTE.	SECTION	COUNTY	TOTAL SHEETS	SHEET NO.	
pw:\IL\084EBIDINTEG.illinois.gov\PWIDOT\Documents\IDOT Offices\District 9\Projects\78484\Drawings\CADsheets\78484.pmk.sht.dgn	DRWN	REVISED -	REVISED -								146	106RS-5	UNION	19	14	
Default	PLOT SCALE = 40.0000' / in.	CHECKED -	REVISED -								CONTRACT NO. 78484					
	PLOT DATE = 12/10/2015	DATE -	REVISED -								ILLINOIS FED. AID PROJECT					



PAVEMENT MARKING LAYOUT
 SHALL BE CONFIRMED IN THE FIELD
 AND APPROVED BY THE ENGINEER

FILE NAME =	USER NAME = Leftwichdl	DESIGNED -	REVISED -	STATE OF ILLINOIS DEPARTMENT OF TRANSPORTATION	SCALE:	SHEET	OF	SHEETS	STA.	TO STA.	F.A.P. RTE.	SECTION	COUNTY	TOTAL SHEETS	SHEET NO.
pw:\IL\084EBIDINTEG\Illinois.gov\PIWIDOT\Documents\IDOT Offices\District 9\Projects\78484\Drawings\CAD\Sheets\78484.pmk.sht.dgn	DRAWN	REVISED -	REVISED -								146	106RS-5	UNION	19	15
PLOT SCALE = 40.0000' / in.	CHECKED -	REVISED -	REVISED -								CONTRACT NO. 78484				
Default	DATE -	REVISED -	REVISED -								ILLINOIS FED. AID PROJECT				

DETAIL FOR HMA SURFACE REMOVAL
CURB & GUTTER SECTION INLAY

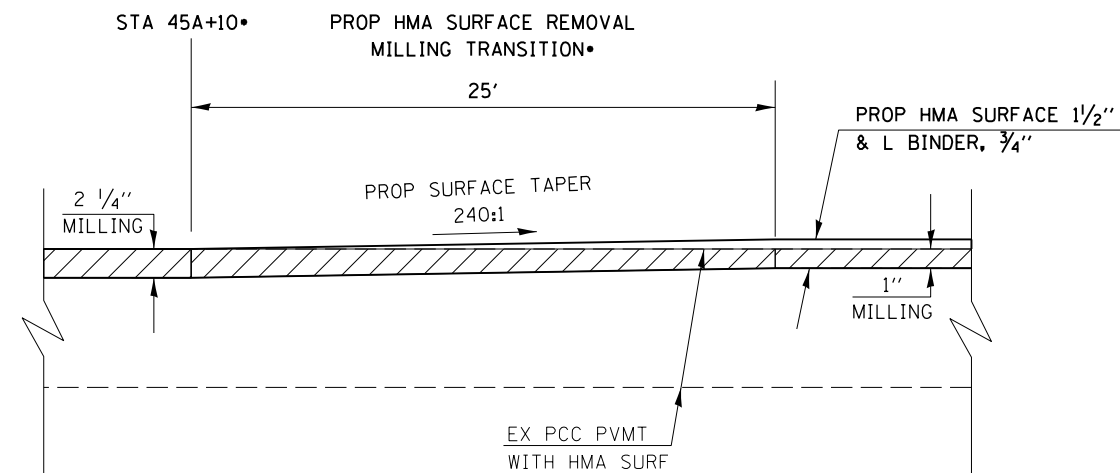


TO BE USED
STA 32+28 TO STA 45A+10*

- AT THE END OF THE CURB & GUTTER SECTION ON THE LEFT SIDE

•• TO BE PAID FOR AS HMA SURFACE REMOVAL 2 1/4"
••• TO BE INCLUDED IN THE COST FOR HMA SURFACE REMOVAL 2 1/4"

DETAIL FOR HMA SURFACE REMOVAL
MILLING TRANSITION

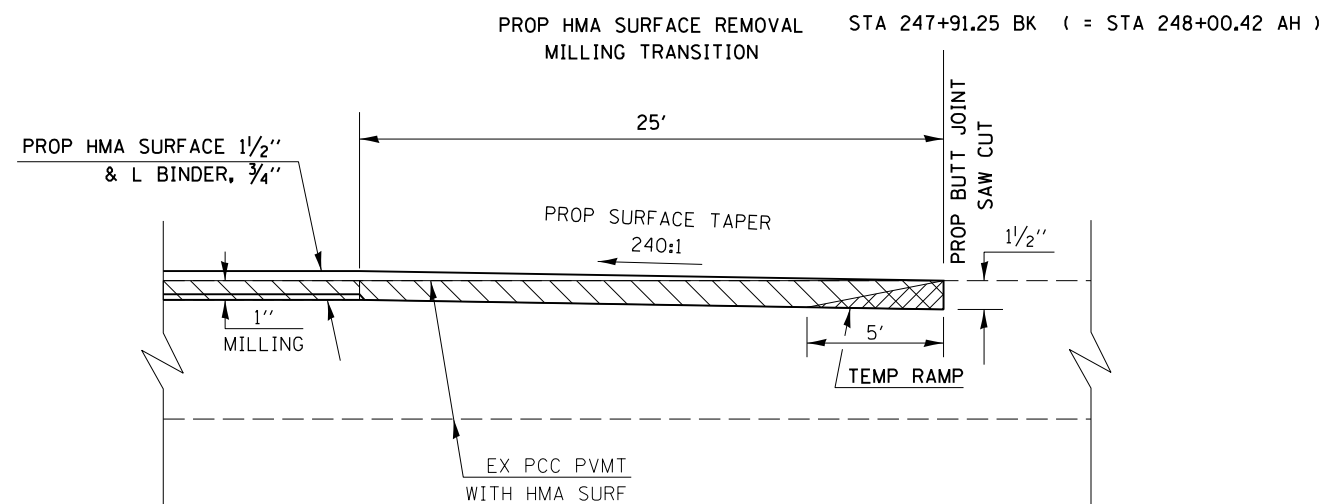


TO BE USED
STA 45A+10* TO STA 45A+35

- AT THE END OF THE CURB & GUTTER SECTION ON THE LEFT SIDE

• TO BE PAID FOR AS HMA SURFACE REMOVAL 2 1/4"

DETAIL FOR HMA SURFACE REMOVAL
BUTT JOINT



TO BE USED
STA 247+66 TO STA 247+91.45 (248+00.42 AH)

NOTE: TO BE PAID FOR AS HMA SURFACE REMOVAL - BUTT JOINT

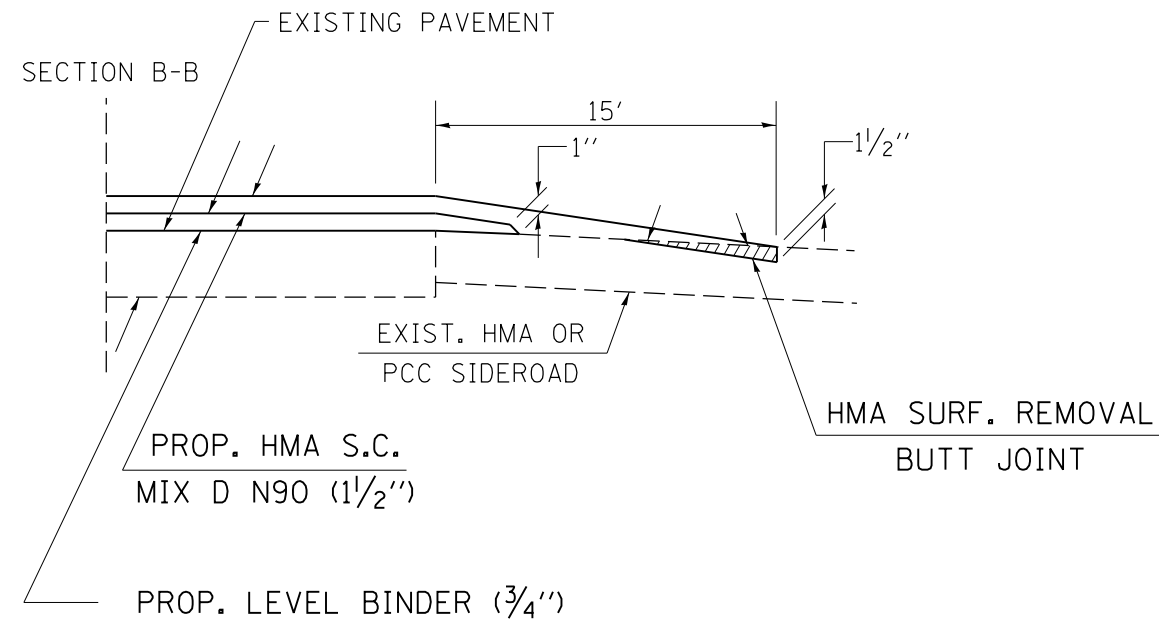
FILE NAME =	USER NAME = Leftwichdl	DESIGNED -	REVISED -
pw:\IL\084EBIDINTEG.illinois.gov\PWIDOT\Documents\IDOT Offices\District 9\Projects\78484\Drawings\CAD\Sheets\78484.sht.dgn		CHECKED -	REVISED -
Default	PLOT DATE = 12/10/2015	DATE -	REVISED -

STATE OF ILLINOIS
DEPARTMENT OF TRANSPORTATION

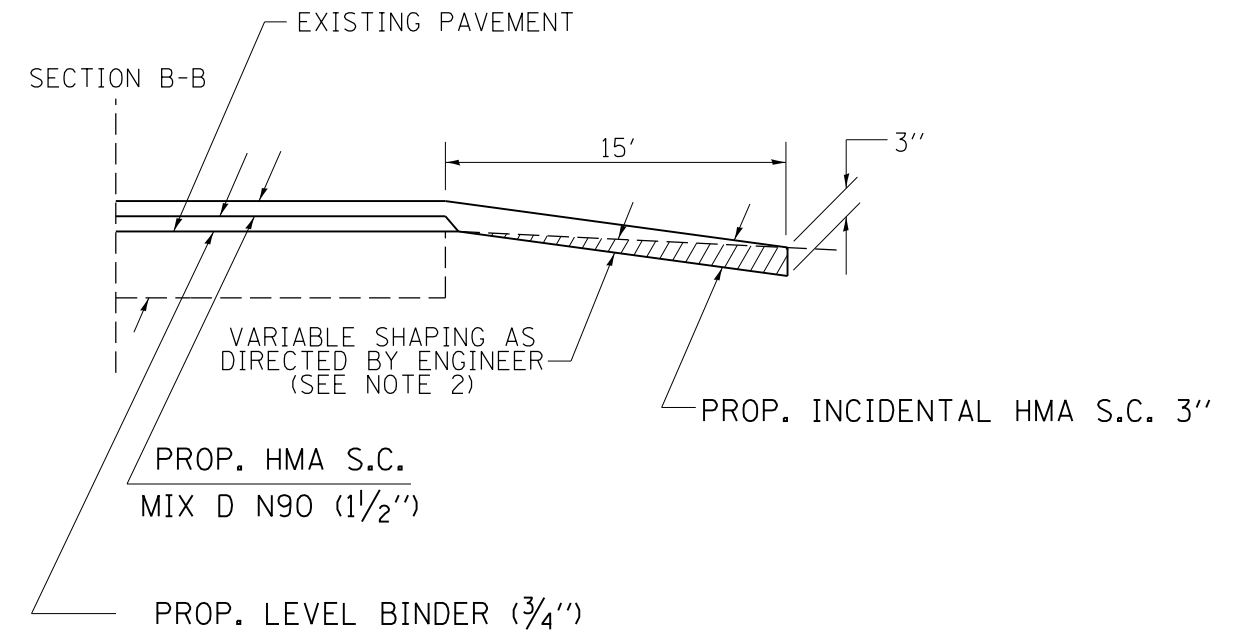
SCALE: SHEET OF SHEETS STA. TO STA.

F.A.P. RTE.	SECTION	COUNTY	TOTAL SHEETS	SHEET NO.
146	106RS-5	UNION	19	16
CONTRACT NO. 78484			ILLINOIS FED. AID PROJECT	

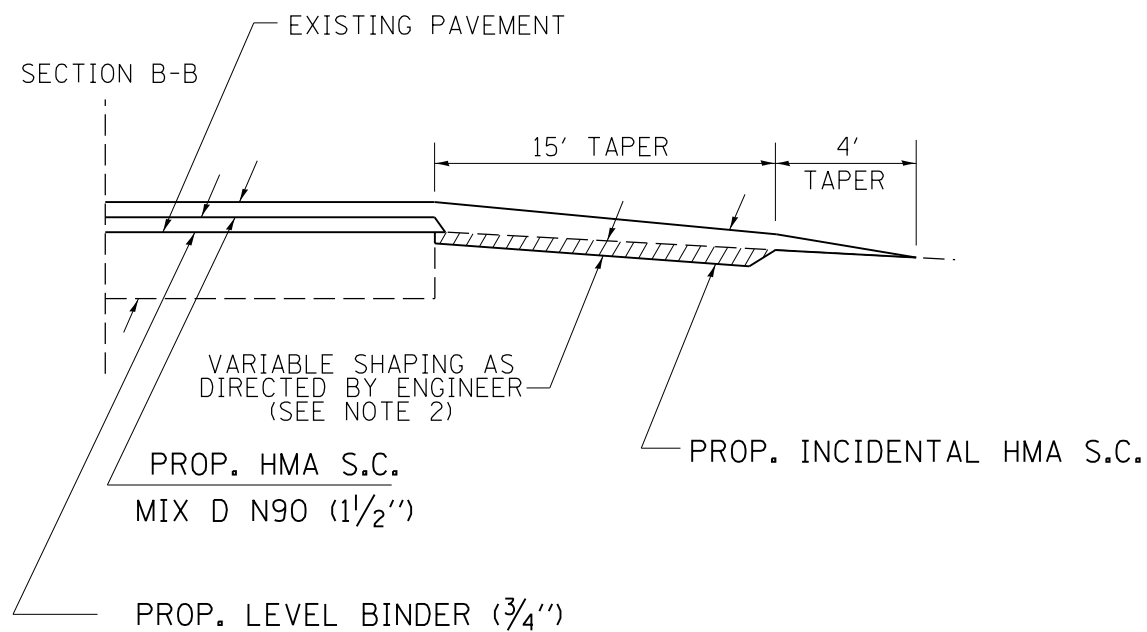
EX. HMA OR PCC SIDEROADS
WITH BUTT JOINT



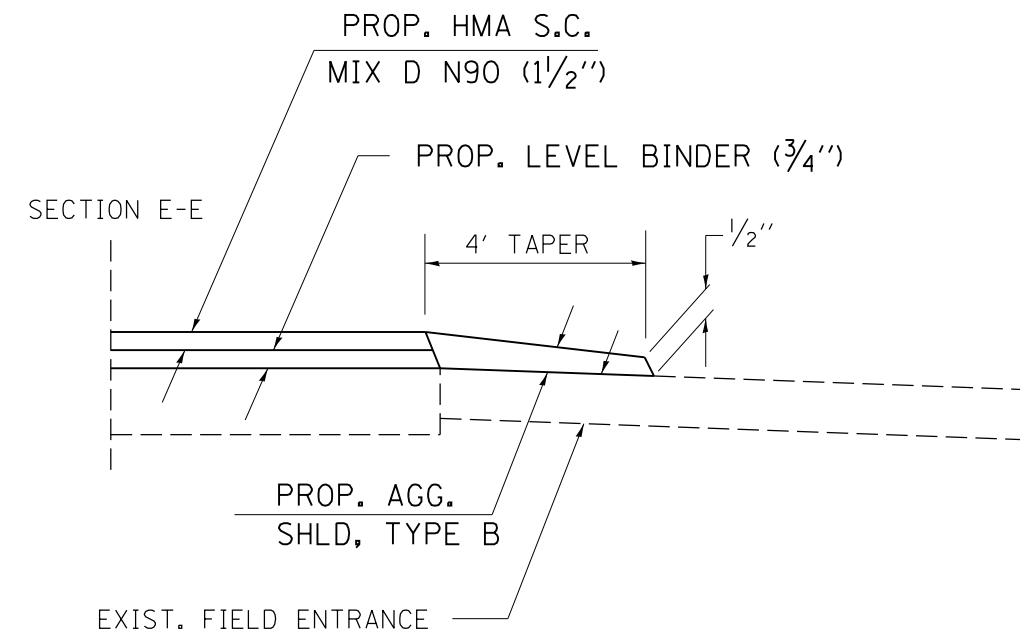
EX. AGGREGATE SIDEROAD



EX. OIL & CHIP SIDEROAD



AGG. OR EARTH
FIELD ENTRANCE



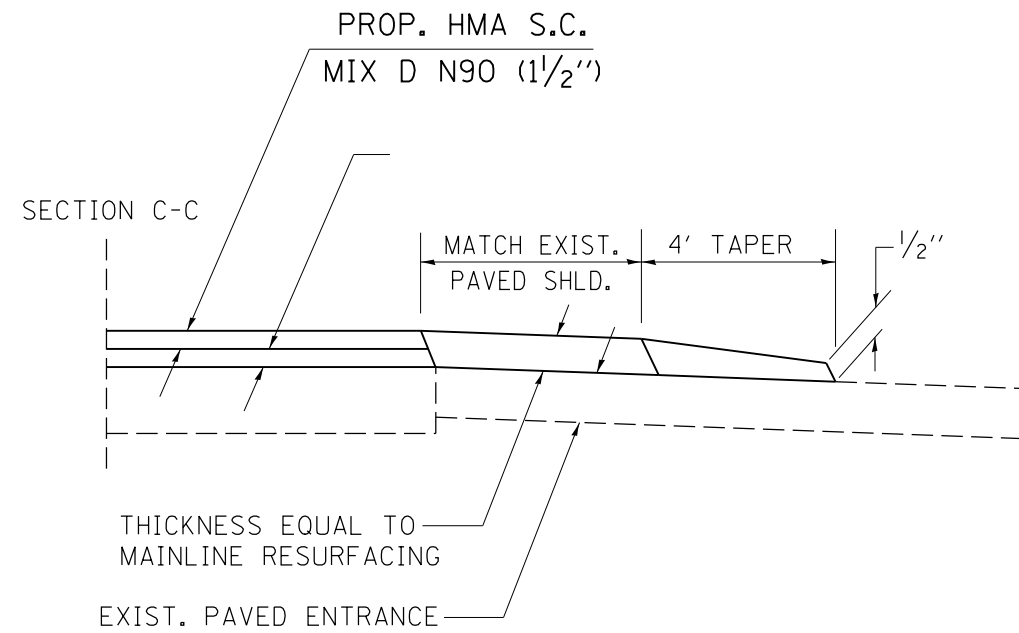
FILE NAME =	USER NAME = Leftwichdl	DESIGNED -	REVISED -
pw:\IL\084EBIDINTEG.illinois.gov\PWIDOT\Documents\DOT Offices\District 9\Projects\78484\Drawings\CAD\Sheets\78484.sht.dgn		CHECKED -	REVISED -
Default	PLOT DATE = 12/10/2015	DATE -	REVISED -

**STATE OF ILLINOIS
DEPARTMENT OF TRANSPORTATION**

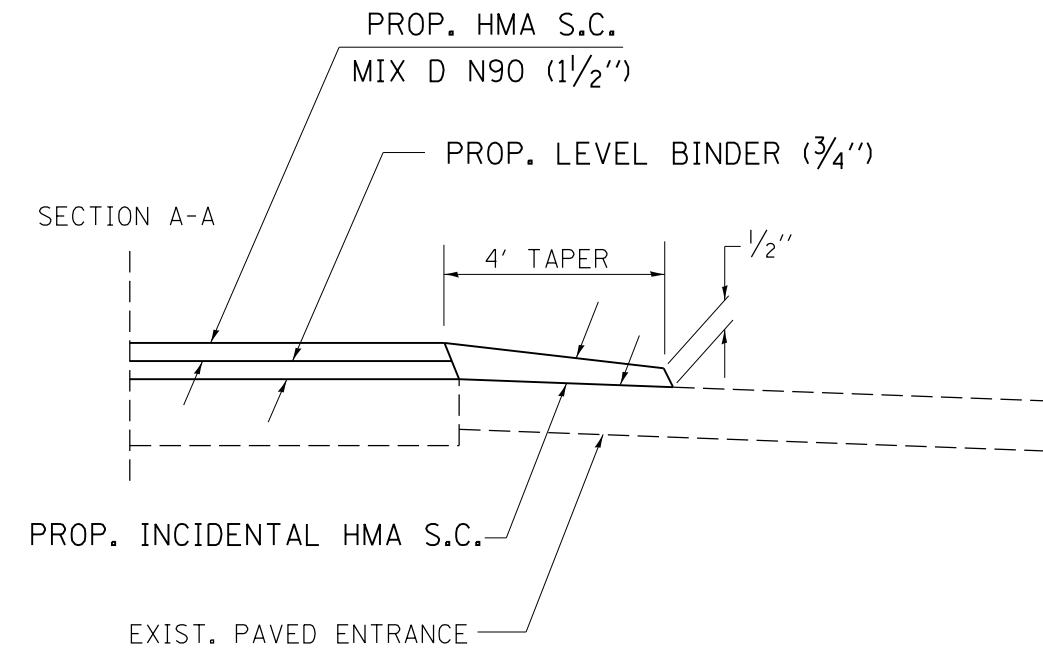
SCALE: SHEET OF SHEETS STA. TO STA.

F.A.P. RTE.	SECTION	COUNTY	TOTAL SHEETS	SHEET NO.
146	106RS-5	UNION	19	17
CONTRACT NO. 78484			ILLINOIS FED. AID PROJECT	

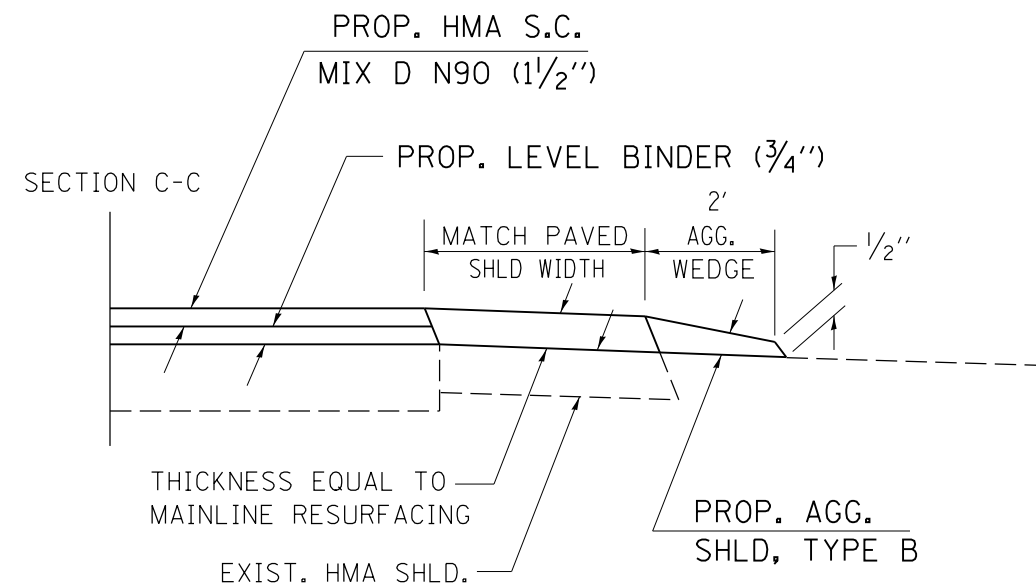
HMA, PCC, OR OIL & CHIP PRIVATE OR COMMERCIAL ENTRANCE (HMA SHLD.)



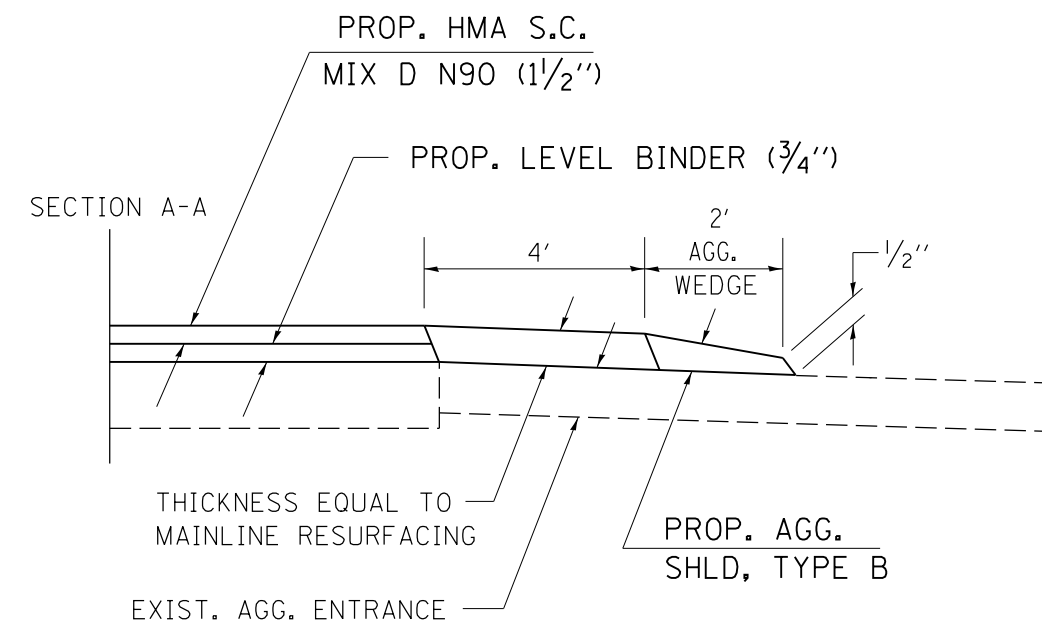
HMA, PCC, OR OIL & CHIP PRIVATE OR COMMERCIAL ENTRANCE



AGG. PRIVATE OR COMMERCIAL ENTRANCE (HMA SHLD.)



AGG. PRIVATE OR COMMERCIAL ENTRANCE



FILE NAME =	USER NAME = Leftwichdl	DESIGNED -	REVISED -
pw:\IL\084EBIDINTEG.illinois.gov\PIWIDOT\Documents\DOT Offices\District 9\Projects\78484\Drawings\CAD\Sheets\78484.sht.dgn		CHECKED -	REVISED -
Default	PLOT SCALE = 100.0000' / in.	DATE -	REVISED -
	PLOT DATE = 12/10/2015		

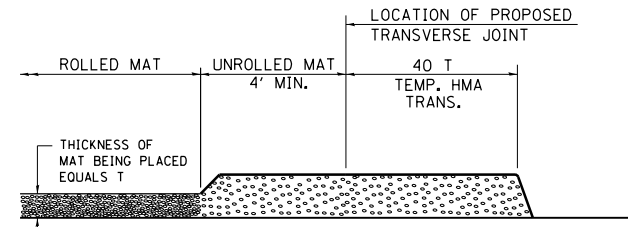
**STATE OF ILLINOIS
DEPARTMENT OF TRANSPORTATION**

SCALE: SHEET OF SHEETS STA. TO STA.

F.A.P. RTE.	SECTION	COUNTY	TOTAL SHEETS	SHEET NO.
146	106RS-5	UNION	19	18
CONTRACT NO. 78484			ILLINOIS FED. AID PROJECT	

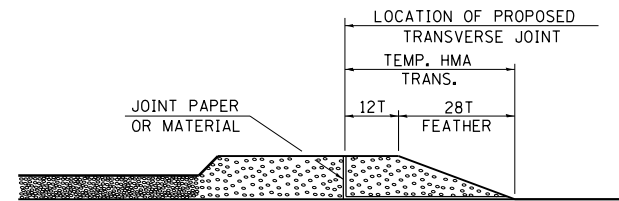
TEMPORARY HOT-MIX ASPHALT TRANSITIONS

ILLINOIS STANDARD



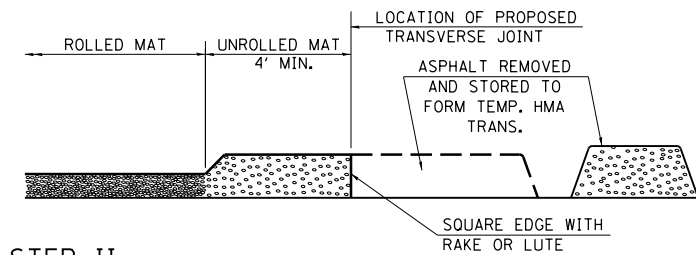
STEP I

1. PLACE HOT-MIX ASPHALT MAT, LENGTH 40 TIMES THE THICKNESS OF THE MAT BEING PLACED PAST THE PROPOSED TRANSVERSE JOINT LOCATION USING NORMAL OPERATING PROCEDURES.
2. EXTREME CARE SHOULD BE TAKEN TO MAINTAIN ENOUGH MATERIAL IN FRONT OF THE SCREED TO MAINTAIN REQUIRED PAVING DEPTH.



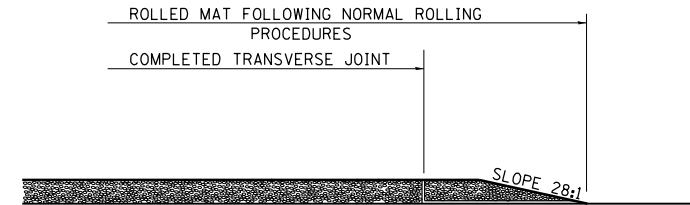
STEP III

1. JOINT PAPER OR OTHER PRESELECTED JOINT MATERIAL IS THEN PLACED IN THE CLEARED AREA AND THE EXCESS ASPHALT USED TO HAND FORM A TRANSITION TO THE DIMENSIONS SHOWN ABOVE.
2. NOTE THAT IN CONSTRUCTING THE TRANSITION, THE MAT DEPTH IS CONTINUED AS PART OF THE TRANSITION BEFORE FORMING THE FEATHER.



STEP II

1. MOVE THE PAVER OUT OF THE WAY AND REMOVE THE ASPHALT FROM THE AREA OF THE PROPOSED TEMPORARY HOT-MIX ASPHALT TRANSITION.
2. SQUARE UP THE END OF THE MAT WITH A RAKE OR LUTE.
3. NOTE THAT THE MAT WITHIN 4' OF THE END OF JOINT IS NOT TO BE ROLLED AT THIS TIME.

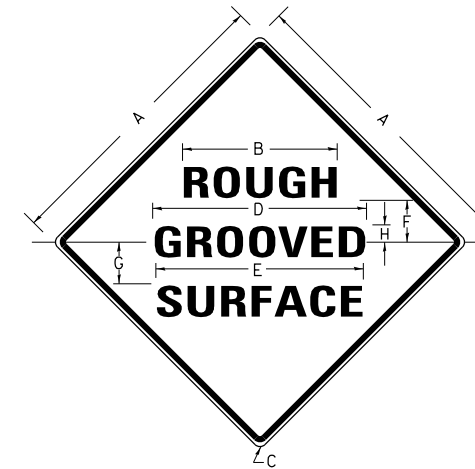


STEP IV

1. COMPLETE TEMPORARY TRANSITION BY ROLLING.
2. TO RESUME PAVING, AT THE JOINT, REMOVE TEMPORARY TRANSITION AND DISPOSE OF THE MATERIAL ACCORDING TO ART. 202.03 OF THE STD. SPECS. (COST INCLUDED IN THE CONTRACT).
3. CONSTRUCTING THE TEMPORARY TRANSITIONS WILL NOT BE PAID FOR SEPARATELY IN ACCORDANCE WITH ARTICLE 406.14 OF THE STANDARD SPECIFICATIONS.

STD. 9-26

REVISIONS	
REDRAWN	2-15-89
REVISED	8-16-94
REVISED	01-09-07
RESIZED	05-8-08
REVISED	05-16-13



NOTES:

PRIOR TO ALLOWING TRAFFIC ON ANY PORTION OF THE ROADWAY THAT HAS BEEN COLDMILLED, THE CONTRACTOR SHALL HAVE ERECTED "ROUGH GROOVED SURFACE" SIGNS THAT CONFORM TO THE ABOVE DETAILS. A MINIMUM OF ONE SIGN AT EACH END OF THE IMPROVEMENT WILL BE REQUIRED. THE CONTRACTOR SHALL MAINTAIN THE "ROUGH GROOVED SURFACE" SIGNS UNTIL THE COLDMILLED SURFACE IS COVERED WITH LEVELING BINDER OR SURFACE COURSE.

IF AT ANY TIME THE SIGNS ARE IN PLACE BUT NOT APPLICABLE, THEY SHALL BE TURNED FROM THE VIEW OF MOTORISTS OR COVERED AS DIRECTED BY THE ENGINEER.

THE COST OF FURNISHING, ERECTING, MAINTAINING, AND REMOVING THE REQUIRED SIGNS SHALL BE INCLUDED IN THE CONTRACT.

COLORS:

LEGEND AND BORDER- BLACK NON-REFLECTORIZED
BACKGROUND- ORANGE REFLECTORIZED

SIGN SIZE	DIMENSIONS							
	A	B	C	D	E	F	G	H
48X48	48.0	24.1	3.0	34.0	33.0	6.0	13.0	3.5

SIGN SIZE	SERIES LINES			MAR GIN	BOR DER	BLANK STD.
	1	2	3			
48X48	7C	7C	7C	0.8	1.2	B4-48D

ALL DIMENSIONS IN INCHES

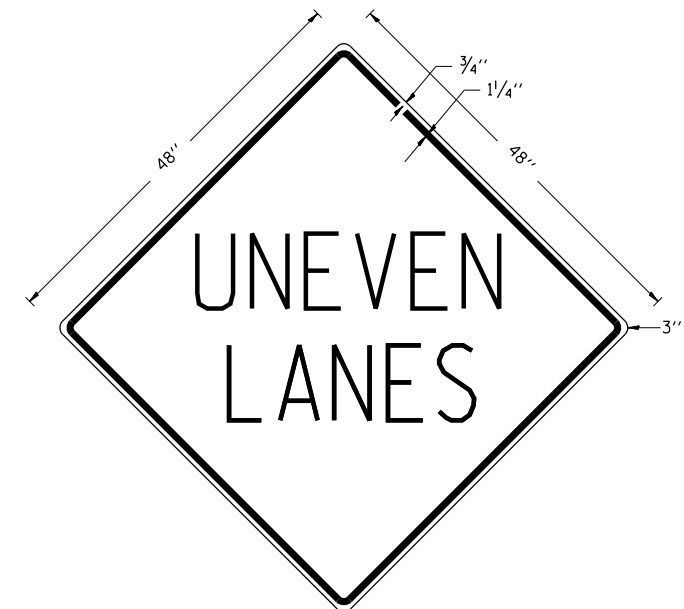
REVISIONS

REDRAWN	2-15-89
REVISED	4-6-93
REVISED	3-27-08
REVIEWED	5-17-13

STD. 9-39

UNEVEN LANES SIGN

W8-11 (48" x 48")



COLORS:

LEGEND AND BORDER - BLACK NON-REFLECTORIZED
BACKGROUND - ORANGE REFLECTORIZED

NOTE: PRIOR TO ALLOWING TRAFFIC ON ANY PORTION OF THE ROADWAY THAT HAS BEEN COLDMILLED OR BEFORE RESURFACING OPERATIONS BEGIN, THE CONTRACTOR SHALL HAVE ERECTED "UNEVEN PAVEMENT" SIGNS THAT CONFORM TO THE ABOVE DETAILS. A MINIMUM OF ONE SIGN AT EACH END OF THE IMPROVEMENT WILL BE REQUIRED. THE CONTRACTOR SHALL MAINTAIN THE "UNEVEN PAVEMENT" SIGNS UNTIL THE RESURFACING OPERATIONS ARE COMPLETED.

IF AT ANY TIME THE SIGNS ARE IN PLACE BUT NOT APPLICABLE, THEY SHALL BE TURNED FROM THE VIEW OF MOTORISTS OR COVERED AS DIRECTED BY THE ENGINEER.

THE COST OF FURNISHING, ERECTING, MAINTAINING, AND REMOVING THE REQUIRED SIGNS SHALL BE INCLUDED IN THE CONTRACT.

REVISIONS

DRAWN	2-15-89
REVISED	4-06-93
REDESIGNED	
RESIZED	5-08-08
REVIEWED	5-17-13

STD. 9-41

FILE NAME =	USER NAME = Leftwichdl	DESIGNED -	REVISED -
p:\11\084EBIDINTEG\illinois.gov\PIWIDOT\Documents\IDOT Offices\District 9\Projects\78484\Drawings\CAD\Sheets\78484.sht.dgn		DRAWN -	REVISED -
Default	PLOT DATE = 12/10/2015	CHECKED -	REVISED -
		DATE -	REVISED -

**STATE OF ILLINOIS
DEPARTMENT OF TRANSPORTATION**

SCALE: SHEET OF SHEETS STA. TO STA.

F.A.P. RTE.	SECTION	COUNTY	TOTAL SHEETS	SHEET NO.
146	106RS-5	UNION	19	19
				CONTRACT NO. 78484
ILLINOIS FED. AID PROJECT				