

STATE OF ILLINOIS
DEPARTMENT OF TRANSPORTATION
DIVISION OF HIGHWAYS

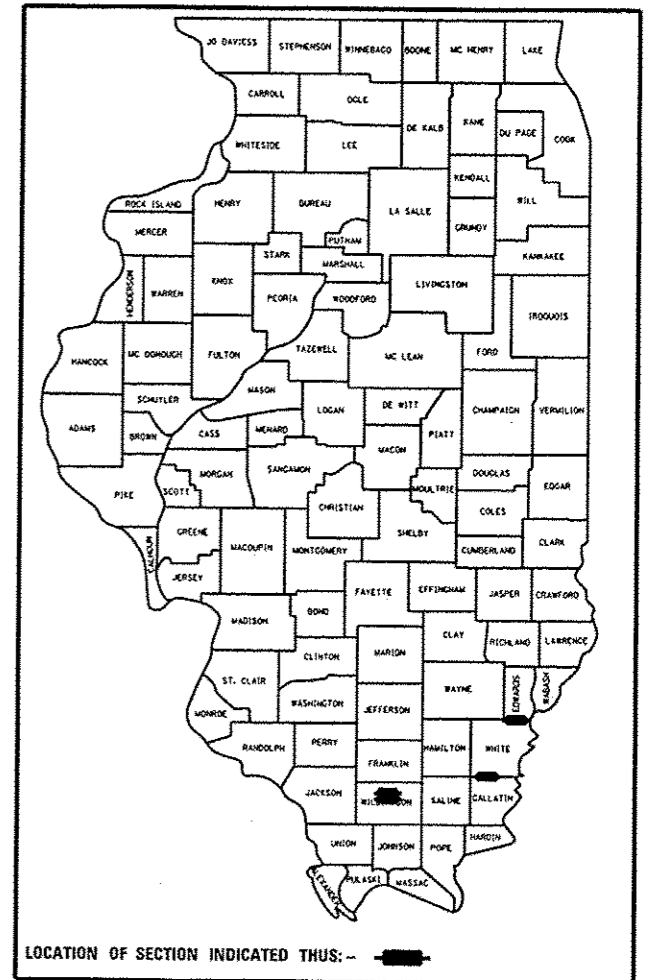
**PROPOSED
HIGHWAY PLANS**

VARIOUS ROUTES
SECTION D9 BRIDGE PAINT 2016-1

WILLIAMSON AND WHITE COUNTIES

F.A. RTE.	SECTION	COUNTY	TOTAL SHEETS	SHEET NO.
VAR.	D9 BRIDGE PAINT 2016-1	VARIOUS	17	1
		ILLINOIS	CONTRACT NO. 78511	

D-99-011-16



FOR INDEX OF SHEETS, SEE SHEET NO. 2

BRIDGE NO. 1
SN. 100-0057
CH 4 2011 ADT=3250, 2% TRUCKS
I-57 2014 ONE WAY ADT=15250, 24% TRUCKS
ROAD DIST - CO UNIT

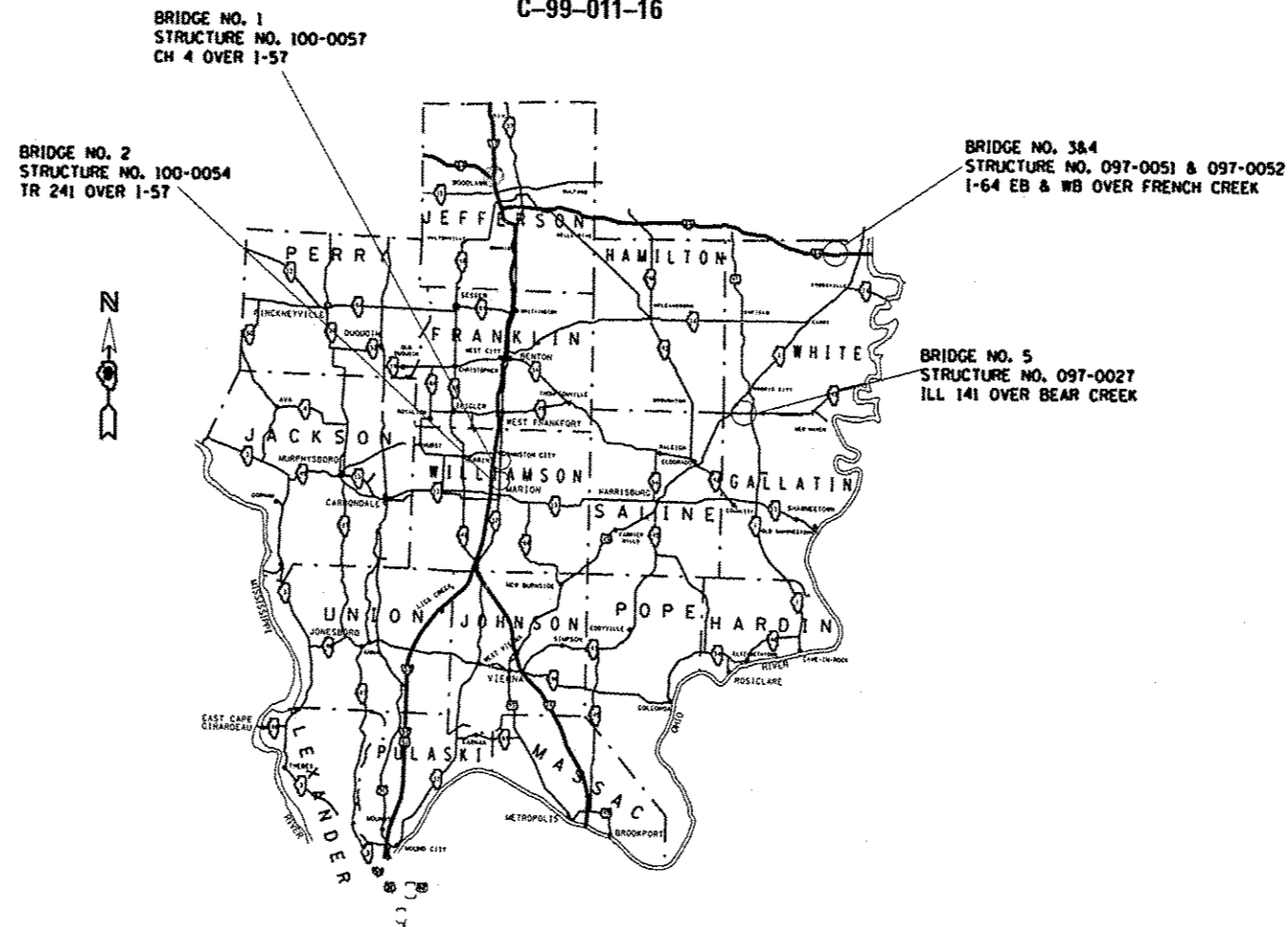
BRIDGE NO. 2
SN. 100-0054
TR 241 2011 ADT=1900, 2% TRUCKS
I-57 2014 ONE WAY ADT=15250, 24% TRUCKS
ROAD DIST - CO UNIT

BRIDGE NO. 3
SN. 097-0051
I-64 WB 2014 ONE WAY ADT=5100, 43% TRUCKS
TOWNSHIP-GRAY

BRIDGE NO. 4
SN. 097-0052
I-64 EB 2014 ONE WAY ADT= 5100, 38% TRUCKS
TOWNSHIP-GRAY

BRIDGE NO. 5
SN. 097-0027
IL-141 2013 ADT=1400, 17% TRUCKS
TOWNSHIP-INDIAN CREEK

C-99-011-16



J.U.L.I.E.
JOINT UTILITY LOCATION INFORMATION FOR EXCAVATION
1-800-892-0123
OR 811

PROJECT ENGINEER: DAVID PICHE (618) 351-5227
DESIGN ENGINEER: AIMAN FAREA

CONTRACT NO. 78511

STATE OF ILLINOIS
DEPARTMENT OF TRANSPORTATION
DIVISION OF HIGHWAYS

SUBMITTED Dec 8 2015

Jeffrey A. Keen
DEPUTY DIRECTOR OF HIGHWAYS, REGION ENGINEER

Jan 29 2016
Maween M. Addis PE
ENGINEER OF DESIGN AND ENVIRONMENT

Jan 29 2016
Omer Osman PE
DIRECTOR OF HIGHWAYS, CHIEF ENGINEER

PRINTED BY THE AUTHORITY
OF THE STATE OF ILLINOIS

GENERAL NOTES

ADDITIONAL TRAFFIC CONTROL DEVICES MAY BE REQUIRED TO CHANNEL TRAFFIC AT COMMERCIAL AND/OR PRIVATE ENTRANCE AS DIRECTED BY THE ENGINEER. ALL TRAFFIC CONTROL DEVICES ARE INCLUDED IN THE COST OF THE TRAFFIC CONTROL AND PROTECTION STANDARD USED AT THE SITE, AND WILL NOT BE PAID FOR SEPARATELY.

THE EXISTING STEEL COATINGS CONTAIN LEAD. THE CONTRACTOR SHOULD TAKE APPROPRIATE PRECAUTIONS TO DEAL WITH THE PRESENCE OF LEAD ON THIS PROJECT.

THE CONTRACTOR IS REQUIRED TO BE SSPC OP1 AND SSPC OP2 CERTIFIED.

PLAN DIMENSIONS AND DETAILS RELATIVE TO EXISTING PLANS ARE SUBJECT TO ROUTINE VARIATIONS. THE CONTRACTOR SHALL FIELD VERIFY EXISTING DIMENSIONS AND DETAILS AFFECTING NEW CONSTRUCTION AND MAKE NECESSARY APPROVED ADJUSTMENTS PRIOR TO CONSTRUCTION OR ORDERING OF MATERIALS. SUCH VARIATIONS SHALL NOT BE CAUSE FOR ADDITIONAL COMPENSATION FOR A CHANGE IN SCOPE OF THE WORK, HOWEVER, THE CONTRACTOR WILL BE PAID FOR THE QUANTITY ACTUALLY FURNISHED AT THE UNIT PRICE BID FOR THE WORK.

TRAFFIC CONTROL SIGNS SHALL BE PLACED SO THAT THEY DO NOT INTERFERE WITH EXISTING SIGNS OR FLASHING BEACONS. THE DIMENSIONS BETWEEN SIGNS MAY BE MODIFIED SLIGHTLY SO AS TO AVOID CONFLICTS WITH EXISTING SIDE ROADS, COMMERCIAL ENTRANCES, AND PRIVATE ENTRANCES. THE BUREAU OF OPERATIONS SHOULD APPROVE FINAL PLACEMENT OF TRAFFIC CONTROL SIGNING.

IN ADDITION TO THE REQUIREMENTS OF ARTICLE 107.16 THE CONTRACTOR SHALL PROTECT THE SURFACE OF ALL BRIDGE DECKS AND BRIDGE APPROACH PAVEMENTS IN A MANNER SATISFACTORY TO THE ENGINEER BEFORE ANY EQUIPMENT IS ALLOWED TO CROSS THE STRUCTURE. PROTECTION SHALL BE PROVIDED FOR ALL EQUIPMENT AS DEFINED IN ARTICLE 101.16 REGARDLESS IF TRACK MOUNTED OR WHEELED.

THE QUANTITY FOR RELOCATE PORTABLE TEMPORARY BARRIER SYSTEM IS BASED ON RELOCATING THE BARRIER THREE TIMES AT EACH STRUCTURE WHERE THEY ARE NEEDED. ANY PAYMENT FOR ADDITIONAL RELOCATION WILL BE MADE ACCORDING TO ARTICLE 104.02 OF THE STANDARD SPECIFICATION.

FOR STRUCTURE 097-0027 CLEANING AND PAINTING OF EXISTING STRUCTURAL STEEL SHALL BE AS SPECIFIED IN THE SPECIAL PROVISIONS FOR "CLEANING AND PAINTING EXISTING STEEL STRUCTURES" AND "CONTAINMENT AND DISPOSAL OF LEAD PAINT CLEANING RESIDUES." ALL STEEL, AS SPECIFIED IN THE PLANS, SHALL BE CLEANED PER NEAR WHITE BLAST CLEANING -SSPC- SP10 AND PAINTED ACCORDING TO THE REQUIREMENTS OF PAINT SYSTEM 1 - OZ/E/U. THE COLOR OF THE FINAL FINISH COAT FOR THE BEAMS SHALL BE INTERSTATE GREEN, MUNSELL NO. 7.5G 4/8.

FOR STRUCTURES 100-0057, 100-0054, 097-0051, AND 097-0052 CLEANING AND PAINTING OF EXISTING STRUCTURAL STEEL SHALL BE AS SPECIFIED IN THE SPECIAL PROVISIONS FOR "CLEANING AND PAINTING EXISTING STEEL STRUCTURES" AND "CONTAINMENT AND DISPOSAL OF LEAD PAINT CLEANING RESIDUES." ALL STEEL, AS SPECIFIED IN THE PLANS, SHALL BE CLEANED PER NEAR WHITE BLAST CLEANING- SSPC-SP10 AND PAINTED ACCORDING TO THE REQUIREMENTS OF PAINT SYSTEM 1 - OZ/E/U. THE COLOR OF THE FINAL FINISH COAT FOR THE BEAMS SHALL BE REDDISH BROWN, MUNSELL NO. 2.5YR 3/4 FOR STRUCTURES 100-0057 & 100-0054 AND INTERSTATE GREEN, MUNSELL NO. 7.5G 4/8 FOR STRUCTURES 097-0051 & 097-0052.

A TOTAL OF SEVEN AIR MONITORS ARE REQUIRED TO MONITOR ABRASIVE BLASTING OPERATIONS AT THREE LOCATIONS, 3 AT BRIDGE NO. 2 (SN 100-0054), 2 AT BRIDGE NO. 3 (SN 097-0051), AND 2 AT BRIDGE NO. 4 (SN 097-0052). ACCORDING TO SPECIAL PROVISION "CONTAINMENT AND DISPOSAL OF LEAD PAINT CLEANING RESIDUES."

INDEX OF SHEETS

SHEET NO.	DESCRIPTION
1	COVER SHEET
2	INDEX OF SHEETS, HIGHWAY STANDARDS, GENERAL NOTES
3, 4	SUMMARY OF QUANTITIES
5-9	PORTABLE TEMPORARY BARRIER SYSTEM
10-11	SN 100-0057 STRUCTURE INFORMATION
12-13	SN 100-0054 STRUCTURE INFORMATION
14-15	SN 097-0051 & SN 097-0052 STRUCTURE INFORMATION
16-17	SN 097-0027 STRUCTURE INFORMATION

STANDARDS

701101-04 OFF-RD OPERATIONS, MULTILANE, 15' (4.5 m) TO 24" (600mm) FROM PAVEMENT EDGE

701106-02 OFF-RD OPERATIONS, MULTILANE, MORE THAN 15' (4.5 m) AWAY

701400-08 APPROACH TO LANE CLOSURE, FREEWAY/EXPRESSWAY

701406-09 LANE CLOSURE, FREEWAY/EXPRESSWAY, DAY OPERATIONS ONLY

701428 TRAFFIC CONTROL SETUP AND REMOVAL FREEWAY/EXPRESSWAY

701901-04 TRAFFIC CONTROL DEVICES

701201-04

701402-10

AREAS OF CLEANING & PAINTING

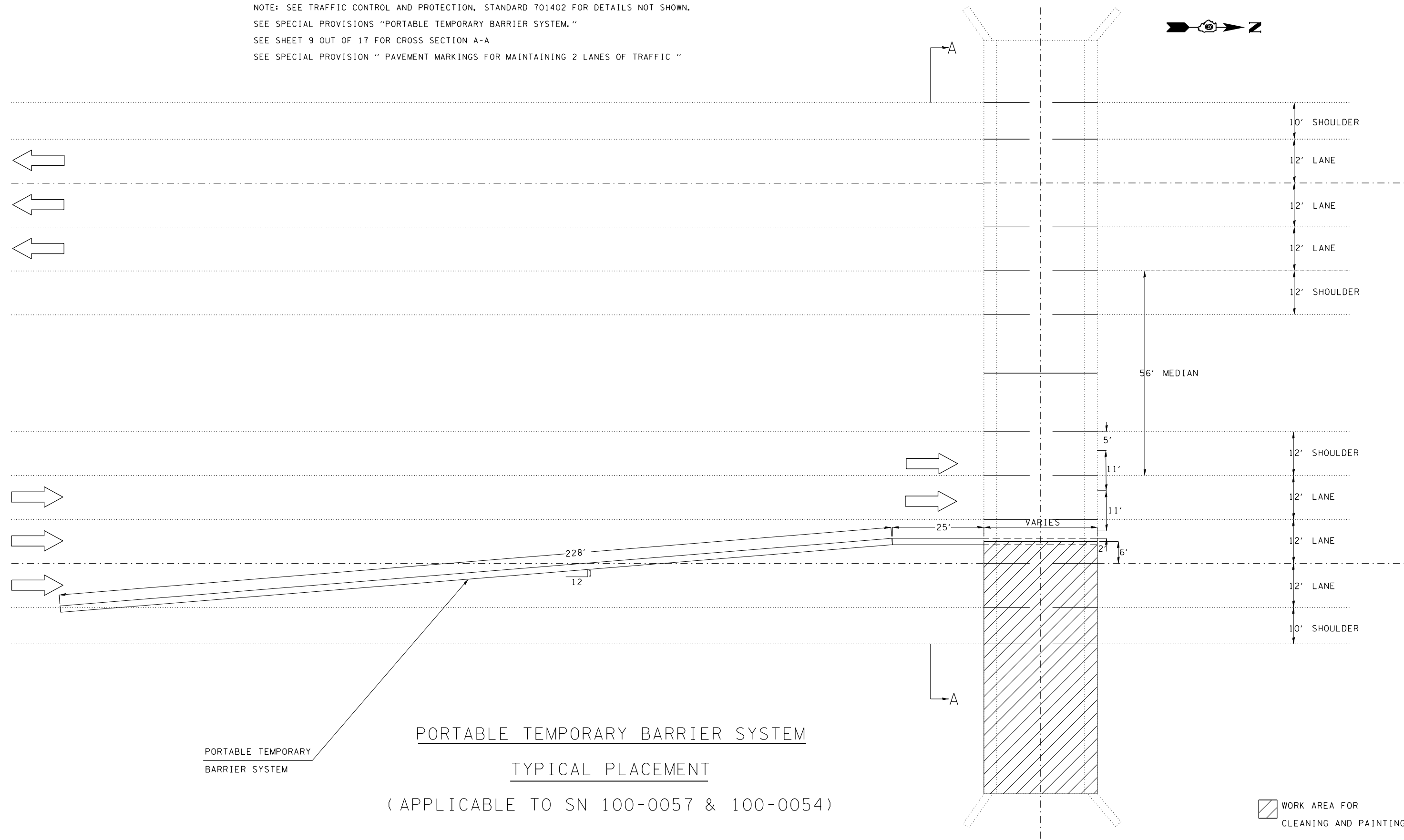
SN/ AREAS OF CLEANING & PAINTING	ALL STEEL WITHIN 5' OF EXP. JOINTS	INSIDE, OUTSIDE & BOTTOM OF FASCIA BEAMS	ALL STRUCTURAL STEEL
100-0057			X
100-0054			X
097-0051			X
097-0052			X
097-0027	X	X	

Prepared By:	<i>[Signature]</i> DISTRICT STUDIES & PLANS ENGINEER
Examined By:	<i>[Signature]</i> DISTRICT LAND ACQUISITION ENGINEER
Examined By:	<i>[Signature]</i> DISTRICT PROGRAM DEVELOPMENT ENGINEER
Examined By:	<i>[Signature]</i> DISTRICT OPERATIONS ENGINEER
Examined By:	<i>[Signature]</i> DISTRICT PROJECT IMPLEMENTATION ENGINEER
Examined By:	<i>[Signature]</i> DISTRICT CONSTRUCTION ENGINEER
Examined By:	<i>[Signature]</i> DISTRICT MATERIALS ENGINEER

SUMMARY OF QUANTITIES - CONT

CODE NUMBER	ITEM DESCRIPTION	UNIT	TOTAL QUANTITY	WILLIAMSON COUNTY		WHITE COUNTY		
				0014				
				100% STATE				
				LOCATION:	RURAL	RURAL	RURAL	RURAL
ROUTE:	CH-4 OVER FAI 57 BRIDGE NO. 1 SN 100-0057	TR-241 OVER FAI 57 BRIDGE NO. 2 SN 100-0054	FAI 64 OVER CREEK BRIDGE NO. 3 SN 097-0051	FAI 64 OVER CREEK BRIDGE NO. 4 SN 097-0052	ILL-141 OVER CREEK BRIDGE NO. 5 SN 097-0027			
Z0007101	CONTAINMENT AND DISPOSAL OF LEAD PAINT CLEANING RESIDUES NO. 1	L SUM	1	1				
Z0007102	CONTAINMENT AND DISPOSAL OF LEAD PAINT CLEANING RESIDUES NO. 2	L SUM	1		1			
Z0007103	CONTAINMENT AND DISPOSAL OF LEAD PAINT CLEANING RESIDUES NO. 3	L SUM	1			1		
Z0007104	CONTAINMENT AND DISPOSAL OF LEAD PAINT CLEANING RESIDUES NO. 4	L SUM	1				1	
Z0007105	CONTAINMENT AND DISPOSAL OF LEAD PAINT CLEANING RESIDUES NO. 5	L SUM	1					1
Z0010501	CLEANING AND PAINTING STEEL BRIDGE NO. 1	L SUM	1	1				
Z0010502	CLEANING AND PAINTING STEEL BRIDGE NO. 2	L SUM	1		1			
Z0010503	CLEANING AND PAINTING STEEL BRIDGE NO. 3	L SUM	1			1		
Z0010504	CLEANING AND PAINTING STEEL BRIDGE NO. 4	L SUM	1				1	
Z0010505	CLEANING AND PAINTING STEEL BRIDGE NO. 5	L SUM	1					1
Z0052396	PORTABLE TEMPORARY BARRIER SYSTEM, TL-3	FOOT	576	288	288			
Z0052399	RELOCATE PORTABLE TEMPORARY BARRIER SYSTEM	FOOT	1728	864	864			

NOTE: SEE TRAFFIC CONTROL AND PROTECTION, STANDARD 701402 FOR DETAILS NOT SHOWN.
 SEE SPECIAL PROVISIONS "PORTABLE TEMPORARY BARRIER SYSTEM."
 SEE SHEET 9 OUT OF 17 FOR CROSS SECTION A-A
 SEE SPECIAL PROVISION " PAVEMENT MARKINGS FOR MAINTAINING 2 LANES OF TRAFFIC "



PORTABLE TEMPORARY
BARRIER SYSTEM

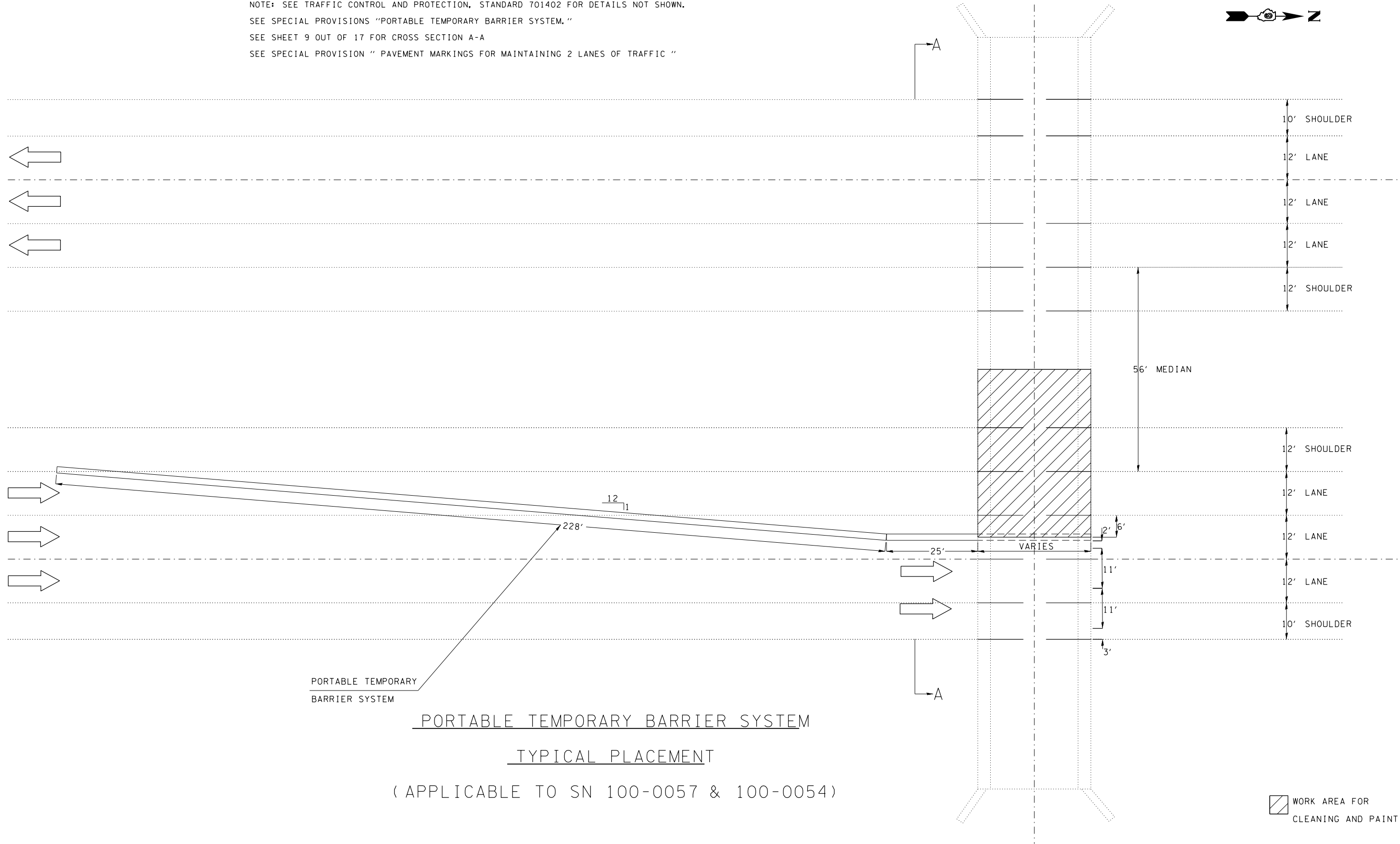
PORTABLE TEMPORARY BARRIER SYSTEM
TYPICAL PLACEMENT
 (APPLICABLE TO SN 100-0057 & 100-0054)

WORK AREA FOR
CLEANING AND PAINTING

STAGE I

FILE NAME =	USER NAME = halsteadtw	DESIGNED -	REVISED -	STATE OF ILLINOIS DEPARTMENT OF TRANSPORTATION	PORTABLE TEMPORARY BARRIER SYSTEM TYPICAL PLACEMENT				F.A. RTÉ.	SECTION	COUNTY	TOTAL SHEETS	SHEET NO.
pw:\IL\084EBIDINTEG\illinois.gov\PWIDOT\Documents\DOT Offices\District 9\Projects\78511\Drawings\CADsheets\78511-shd.dgn		CHECKED -	REVISED -		VAR.	D9 BRIDGE PAINT 2016-1	VARIOUS	17	5				
Default	PLOT SCALE = 100.0000' / in.	DATE -	REVISED -		SCALE: SHEET OF SHEETS STA. TO STA.				CONTRACT NO. 78511				
	PLOT DATE = 12/11/2015				ILLINOIS FED. AID PROJECT								

NOTE: SEE TRAFFIC CONTROL AND PROTECTION, STANDARD 701402 FOR DETAILS NOT SHOWN.
 SEE SPECIAL PROVISIONS "PORTABLE TEMPORARY BARRIER SYSTEM."
 SEE SHEET 9 OUT OF 17 FOR CROSS SECTION A-A
 SEE SPECIAL PROVISION " PAVEMENT MARKINGS FOR MAINTAINING 2 LANES OF TRAFFIC "




PORTABLE TEMPORARY
BARRIER SYSTEM

PORTABLE TEMPORARY BARRIER SYSTEM

TYPICAL PLACEMENT

(APPLICABLE TO SN 100-0057 & 100-0054)

 WORK AREA FOR
CLEANING AND PAINTING

STAGE II

FILE NAME =	USER NAME = halsteadtw	DESIGNED -	REVISED -
p:\11084EBIDINTEG\illinois.gov\PWIDOT\Documents\DOT Offices\District 9\Projects\78511\Drawings\CADsheets\78511-sh.t.dgn		CHECKED -	REVISED -
Default	PLOT SCALE = 100.0000' / in.	DATE -	REVISED -
	PLOT DATE = 12/11/2015		

**STATE OF ILLINOIS
DEPARTMENT OF TRANSPORTATION**

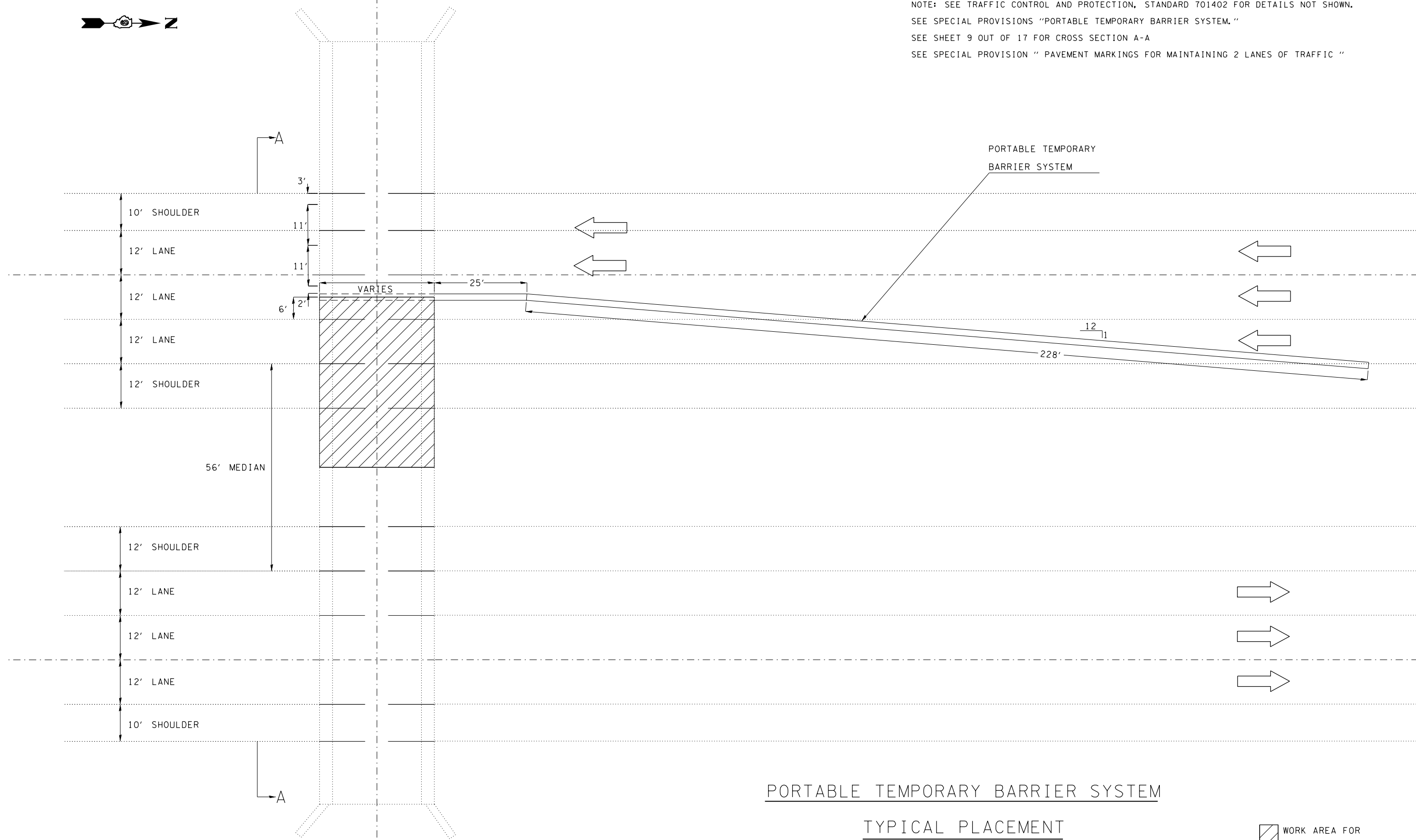
**PORTABLE TEMPORARY BARRIER SYSTEM
TYPICAL PLACEMENT**

SCALE: SHEET OF SHEETS STA. TO STA.

F.A. RTÉ.	SECTION	COUNTY	TOTAL SHEETS	SHEET NO.
VAR.	D9 BRIDGE PAINT 2016-1	VARIOUS	17	6
CONTRACT NO. 78511			ILLINOIS FED. AID PROJECT	



NOTE: SEE TRAFFIC CONTROL AND PROTECTION, STANDARD 701402 FOR DETAILS NOT SHOWN.
 SEE SPECIAL PROVISIONS "PORTABLE TEMPORARY BARRIER SYSTEM."
 SEE SHEET 9 OUT OF 17 FOR CROSS SECTION A-A
 SEE SPECIAL PROVISION " PAVEMENT MARKINGS FOR MAINTAINING 2 LANES OF TRAFFIC "



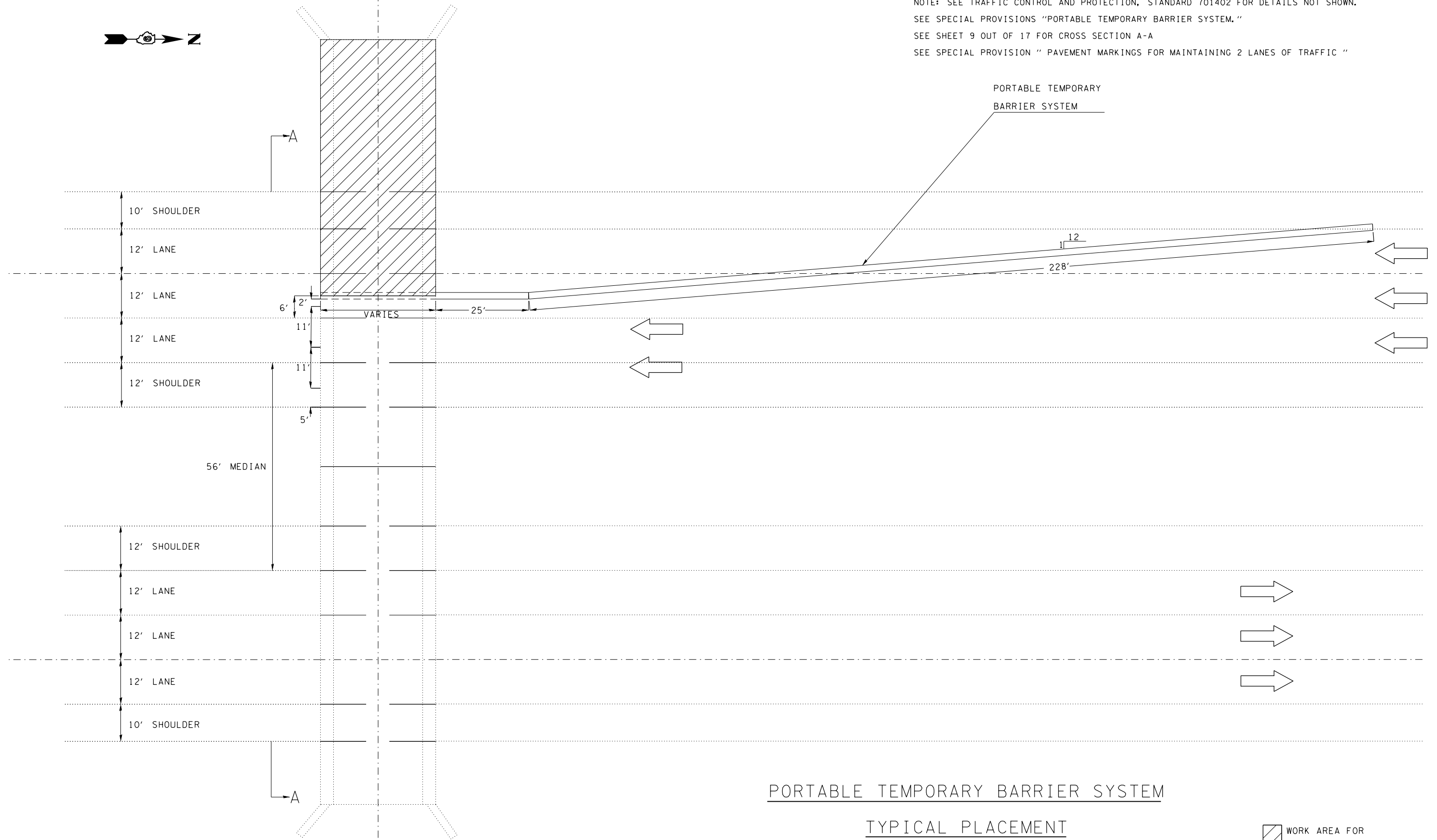
PORTABLE TEMPORARY BARRIER SYSTEM
TYPICAL PLACEMENT
 (APPLICABLE TO SN 100-0057 & 100-0054)

 WORK AREA FOR
 CLEANING AND PAINTING
 STAGE III

FILE NAME =	USER NAME = halsteadtw	DESIGNED -	REVISED -	STATE OF ILLINOIS DEPARTMENT OF TRANSPORTATION	PORTABLE TEMPORARY BARRIER SYSTEM TYPICAL PLACEMENT				F.A. RTÉ.	SECTION	COUNTY	TOTAL SHEETS	SHEET NO.
pw:\IL\084EBIDINTEG.illinois.gov\PWIDOT\Documents\DOT Offices\District 9\Projects\78511\Drawings\CADsheets\78511-sht.dgn		CHECKED -	REVISED -						VAR.	D9 BRIDGE PAINT 2016-1	VARIOUS	17	7
Default	PLOT SCALE = 100.0000' / 1in.	DATE -	REVISED -		CONTRACT NO. 78511				ILLINOIS FED. AID PROJECT				
	PLOT DATE = 12/11/2015				SCALE:	SHEET	OF	SHEETS	STA.	TO	STA.		



NOTE: SEE TRAFFIC CONTROL AND PROTECTION, STANDARD 701402 FOR DETAILS NOT SHOWN.
 SEE SPECIAL PROVISIONS "PORTABLE TEMPORARY BARRIER SYSTEM."
 SEE SHEET 9 OUT OF 17 FOR CROSS SECTION A-A
 SEE SPECIAL PROVISION " PAVEMENT MARKINGS FOR MAINTAINING 2 LANES OF TRAFFIC "



PORTABLE TEMPORARY BARRIER SYSTEM

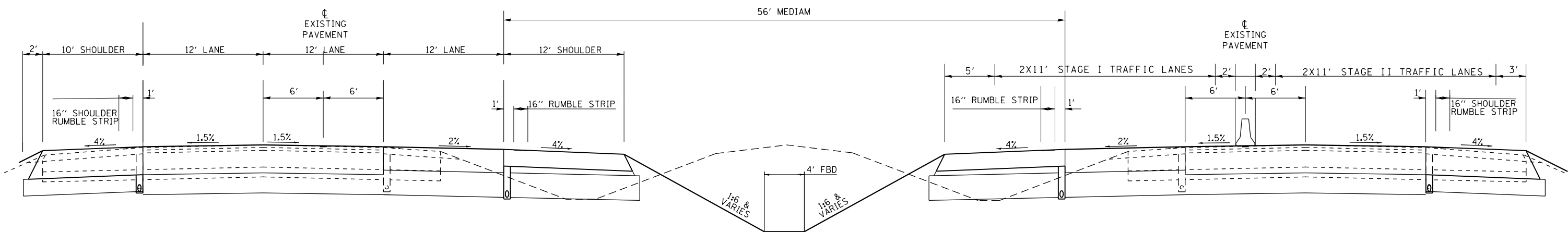
TYPICAL PLACEMENT

(APPLICABLE TO SN 100-0057 & 100-0054)

WORK AREA FOR
CLEANING AND PAINTING

STAGE IV

FILE NAME =	USER NAME = halsteadtw	DESIGNED -	REVISED -	STATE OF ILLINOIS DEPARTMENT OF TRANSPORTATION	PORTABLE TEMPORARY BARRIER SYSTEM TYPICAL PLACEMENT				F.A. RTE.	SECTION	COUNTY	TOTAL SHEETS	SHEET NO.
pw:\IL\084EBIDINTEG\illinois.gov\PIWIDOT\Documents\DOT Offices\District 9\Projects\78511\Drawings\CADsheets\78511-sh.t.dgn		DRAWN -	REVISED -		VAR.	D9 BRIDGE PAINT 2016-1	VARIOUS	17	8				
Default	PLOT SCALE = 100.0000' / in.	CHECKED -	REVISED -		SCALE: SHEET OF SHEETS STA. TO STA.				CONTRACT NO. 78511				
	PLOT DATE = 12/11/2015	DATE -	REVISED -		ILLINOIS FED. AID PROJECT								



SECTION A-A
(LOOKING NORTH)

I57 SB

(SHOWING EXISTING LANES/SHOULDERS)

I57 NB

(SHOWING MAINTENANCE OF STAGED TRAFFIC;
STAGE III AND STAGE IV TRAFFIC LANES ON I57 SB IS SIMILAR)

FILE NAME =	USER NAME = halsteadtw	DESIGNED -	REVISED -
p:\11\084EBIDINTEG\illinois.gov\PIWIDOT\Documents\IDOT Offices\District 9\Projects\78511\Drawings\CADsheets\78511-sh.dgn		CHECKED -	REVISED -
Default	PLOT DATE = 12/11/2015	DATE -	REVISED -

STATE OF ILLINOIS
DEPARTMENT OF TRANSPORTATION

PORTABLE TEMPORARY BARRIER SYSTEM
TYPICAL PLACEMENT

SCALE: SHEET OF SHEETS STA. TO STA.

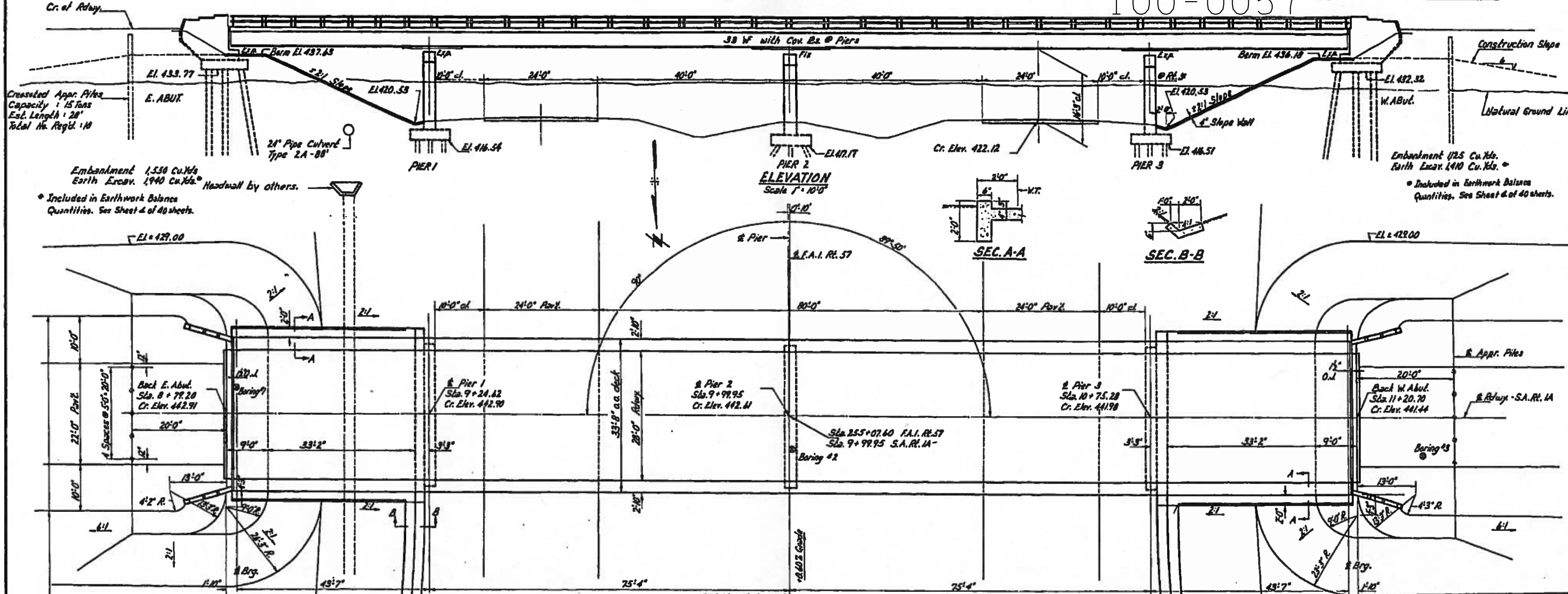
F.A. RTE.	SECTION	COUNTY	TOTAL SHEETS	SHEET NO.
VAR.	D9 BRIDGE PAINT 2016-1	VARIOUS	17	9
			CONTRACT NO. 78511	
ILLINOIS FED. AID PROJECT				

B.M. Concrete Monument 142' R.L. Sta. 254+85 F.A.I. R.L. 57
Elev. 432.314

STATE OF ILLINOIS
DEPARTMENT OF PUBLIC WORKS & BUILDINGS
DIVISION OF HIGHWAYS

PROJECT NO.	SECTION	COUNTY	TOTAL SHEETS	SHEET NO.
100-0057	SEC. XI-5HB	WILLIAMSON	17	10

100-0057



Created Appr. Piles
Capacity: 15 Tons
Est. Length: 28'
Total No. Reqd: 10

Embankment 1,530 Cu.Yds.
Earth Excav. 1,940 Cu.Yds.
Headwall by others.

Included in Earthwork Balance Quantities. See Sheet 4 of 40 sheets.

Embankment 175 Cu.Yds.
Earth Excav. 140 Cu.Yds.

Included in Earthwork Balance Quantities. See Sheet 4 of 40 sheets.

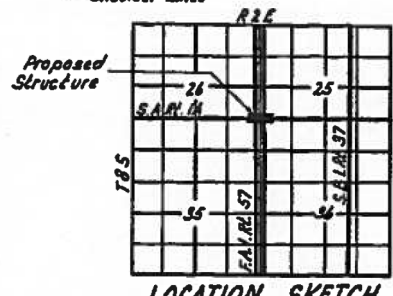
GENERAL NOTES

Class X Concrete shall be used throughout.
The concrete floor slab shall be finished in accordance with Article 51.19 of the Standard Specifications.
Slope wall shall be reinforced with welded wire fabric 6"x6" mesh, #4 wires weighing 50# per 100 sq. ft. Cut off wall is included in quantity of slope wall.
Coarse aggregate which is to be used in end posts must be absolutely free of chert, flint, limonite, lignite and soft sandstone.
Rivets 1/4", Open holes 1/2", unless noted.
Railings shall be adjusted to true alignment after curbs have been poured.
All bolsters, rockers, bearing plates, lead plates, shim plates, pintles and anchor bolts shall be lubricated and set in accordance with Article 51.15 of the Standard Specifications and are included in quantity of Structural Steel. Est. Wt. 9000 Lbs.
All steel handrail posts shall be vertical.
Expansion guards shall be fabricated and erected in accordance with Article 51.18(d) of the Standard Specifications and are included in quantity of Structural Steel.
Except as otherwise provided all structural steel shall receive one shop coat of red lead paint and two field coats of aluminum paint. See Articles 56.1 to 56.5 inclusive of the Standard Specifications.

PLAN

Scale 1" = 10'-0"
Handrail shall be painted according to Article 55.3 of the Standard Specifications.
All paint shall be furnished and applied by the Contractor.

The Contractor shall drive one concrete test pile in permanent location at E. Abutment and one timber test pile in the vicinity of Pier 3, as directed by the Engineer before ordering remainder of piles.

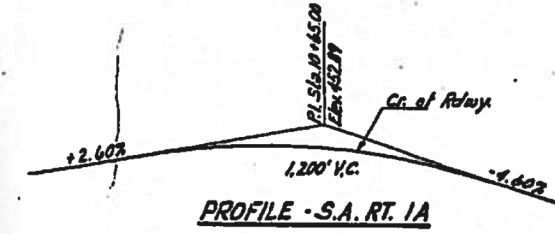


STA. 255+07.60
BUILT 196 BY
STATE OF ILLINOIS
F.A.I. RT. 57 SEC. XI-5HB
F.A. PROJ. I-57-2(9)
LOADING H20-S16
NAME PLATE
See Std. 2113

DESIGNED	W. S. Enger	EXAMINED	W. S. Enger
CHECKED	P. Lawler	PASSED	P. Lawler
DRAWN	P. Lawler	APPROVED	P. Lawler
CHECKED	P. Lawler		

TOTAL BILL OF MATERIAL-SEC. XI-5HB

Item	Super	Sub	Total
Class A Excavation for Struct.	Cu. Yds.	141	141
Erecting Structural Steel	Lbs.	226,680	226,680
Class 2 Concrete	Cu. Yds.	230.7	230.7
Metal Handrail	Lin. Ft.	478	478
Pipe Culverts Type 2A-28"	Lin. Ft.	88	88
Reinforcement Bars	Lbs.	41,110	16,810
Created Piles	Lin. Ft.	940	940
Test Piles (Timber)	Each	1	1
Concrete Piles	Lin. Ft.	677	677
Test Piles (Concrete)	Each	1	1
Name Plates	Each	2	2
Slope Wall	Sq. Yds.	423	423



DESIGN STRESSES

1,100 p.s.i. Super f. Sub.
1,25 p.s.i. Pier Footings
15,200 p.s.i. Reinf.
15,10,000 p.s.i. Struct.
17-10

LOADING H20-S16-44

Section 21-317A
Furnishing structural steel Lbs. 226,680

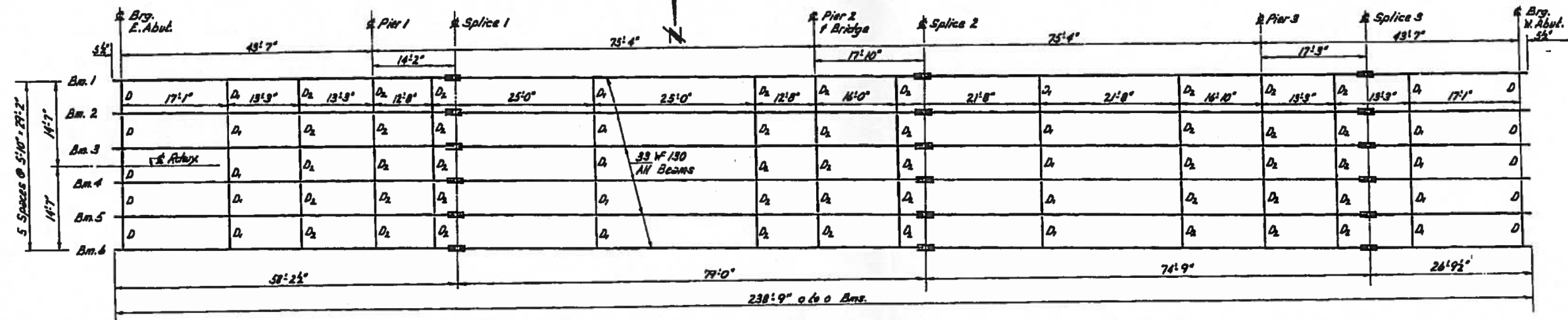
PROJ. I-57-2(9) 5B
GENERAL PLAN & ELEVATION
S.A. RT. 1A OVER
F.A.I. RT. 57 SEC. XI-5HB(F)
WILLIAMSON COUNTY
STA. 255+07.60

FOR INFORMATION ONLY

Revised: 3-8-61. Added Section - W. S.

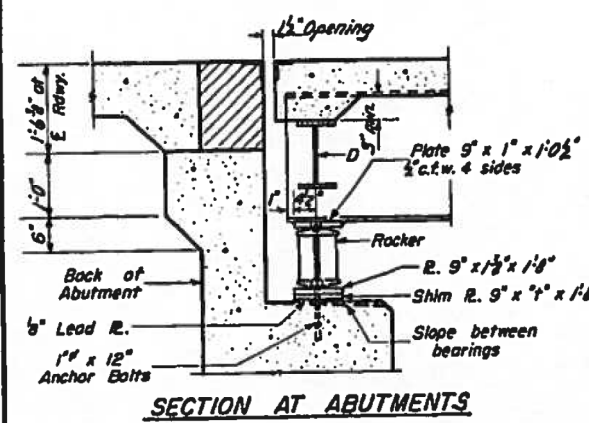
STATE OF ILLINOIS
DEPARTMENT OF PUBLIC WORKS & BUILDINGS
DIVISION OF HIGHWAYS

NO. OF SHEETS	SECTION	COUNT	TOTAL SHEETS	SHEET NO.
10	11-5H(B)	10	10	10
10 SHEETS				

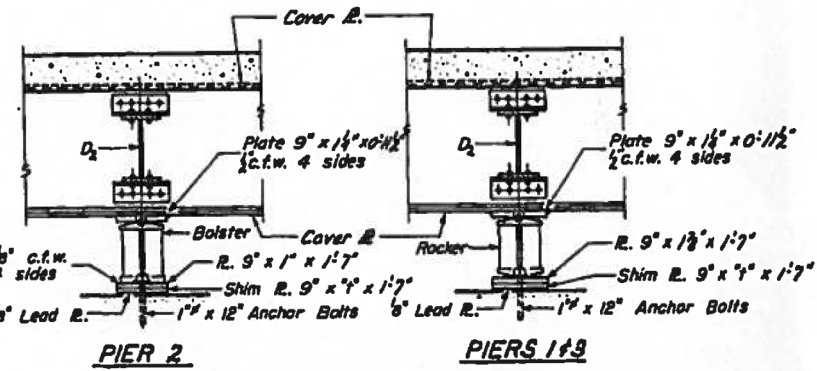


STRUCTURAL STEEL PLAN

FOR INFORMATION ONLY

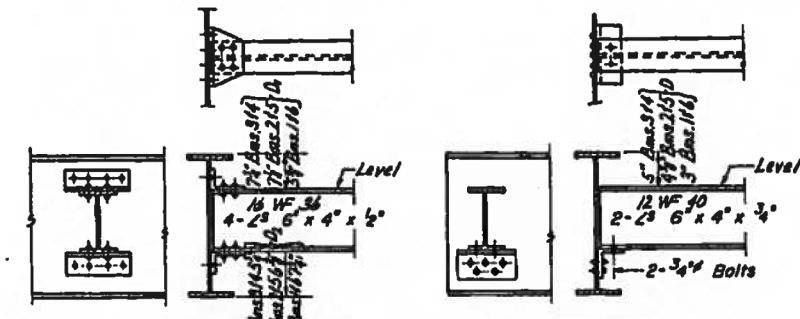


SECTION AT ABUTMENTS



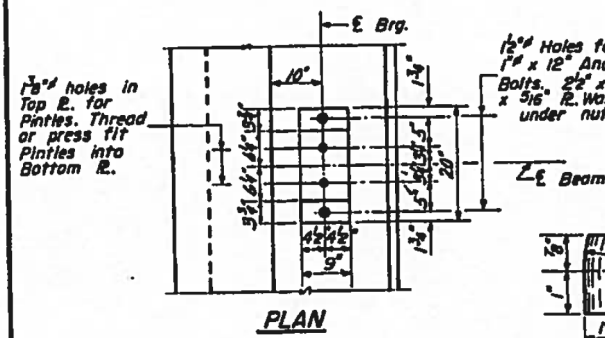
PIER 2

PIERS 1 & 3

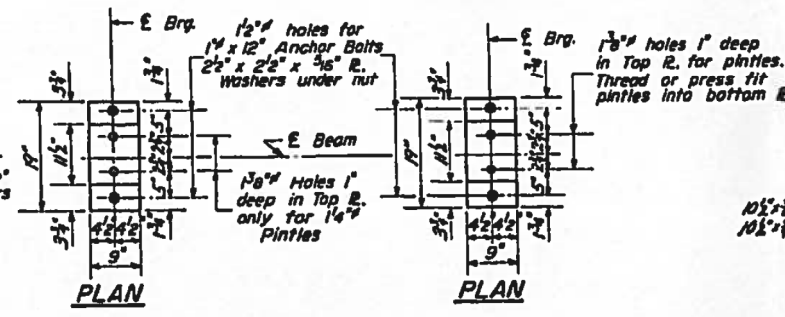


DIAPHRAGMS D, f, D2
20 Required D,
45 Required D2

DIAPHRAGM D
10 Required

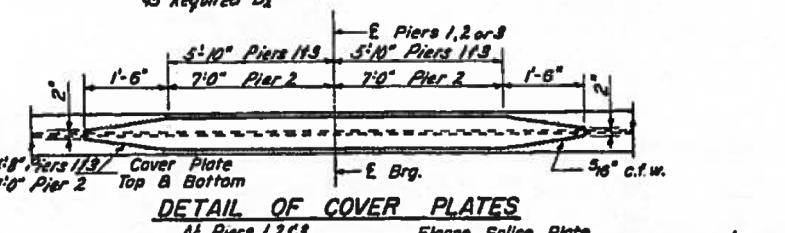


PLAN

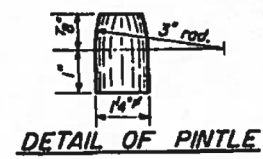


PLAN

PLAN



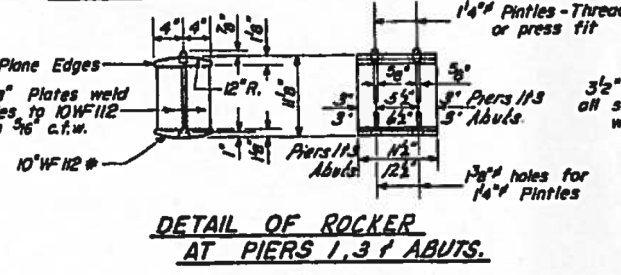
DETAIL OF COVER PLATES
At Piers 1, 2 & 3



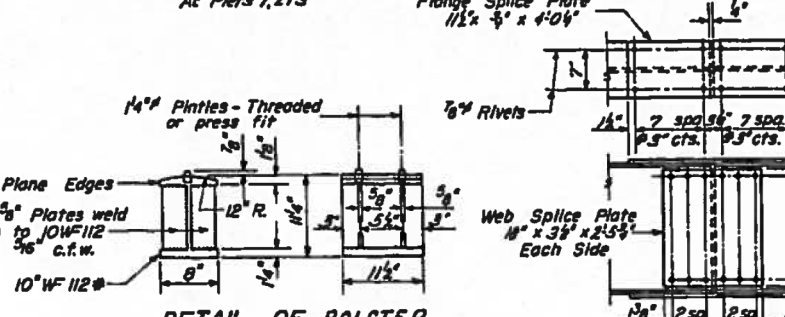
DETAIL OF PINTLE

TABLE OF 2" DIMENSIONS

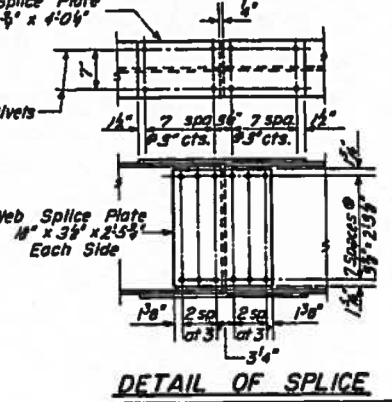
Bms. 314	4"
Bms. 1, 2, 516	0"



DETAIL OF ROCKER
AT PIERS 1, 3 & ABUTS.



DETAIL OF BOLSTER
AT PIER 2



DETAIL OF SPLICE

ELEVATION TOP OF BEAMS

	Bms. 314	Bms. 215	Bms. 116
E. Brg. E. Abut.	442.52	442.27	442.16
E. Pier 1	442.26	442.21	442.10
E. Splice 1	442.24	442.19	442.08
E. Pier 2	441.95	441.90	441.79
E. Splice 2	441.86	441.81	441.70
E. Pier 3	441.52	441.27	441.16
E. Splice 3	441.16	441.11	441.00
E. Brg. W. Abut.	440.87	440.82	440.71

(Elev. are at top of Hanges)

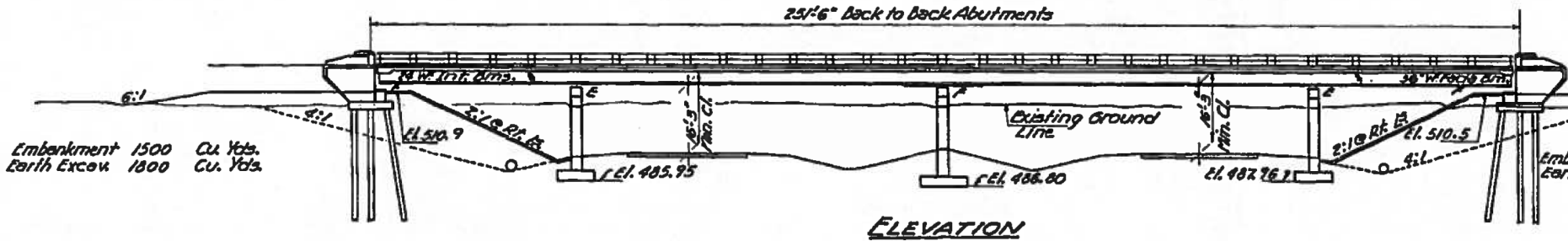
DESIGNED: *W. A. Soussan*
CHECKED: *A. Engy*
DRAWN: *W. A. Soussan*
APPROVED: *P. R. ...*

I-2 Re-drawn 8-18-59

STRUCTURAL STEEL
S.A. RT. 1A
OVER
F.A.I. RT. 57 SEC. XI-5H(B,F)
WILLIAMSON COUNTY
STA. 255 +07.60

3" Concrete Pierment 142' R.L. Sta. 363+90
 Elevation 508.845
 Existing Structure: None

STATE OF ILLINOIS
 DEPARTMENT OF PUBLIC WORKS & BUILDINGS
 DIVISION OF HIGHWAYS



Embankment 1500 Cu. Yds.
 Earth Excav. 1800 Cu. Yds.

Embankment 1530 Cu. Yds.
 Earth Excav. 1900 Cu. Yds.

Boring #	Soil Description	Depth (ft)
Boring #1	Stiff Yellow Clay Loam	505 - 495
	Stiff Mottled Silty Clay Loam	495 - 490
	Very stiff Clay Loam	490 - 485
	Tight Yellow Sandstone	485 - 480
Boring #2	Stiff Yellow Silty Clay Loam	505 - 495
	Very stiff Clay Loam	495 - 490
	Tight Yellow Sandstone	485 - 480
	Tight Yellow Sandstone	480 - 475
Boring #3	Stiff mottled Silty Clay Loam	505 - 495
	Very stiff Clay Loam	495 - 490
	Tight Yellow Sandstone	485 - 480
	Tight Yellow Sandstone	480 - 475

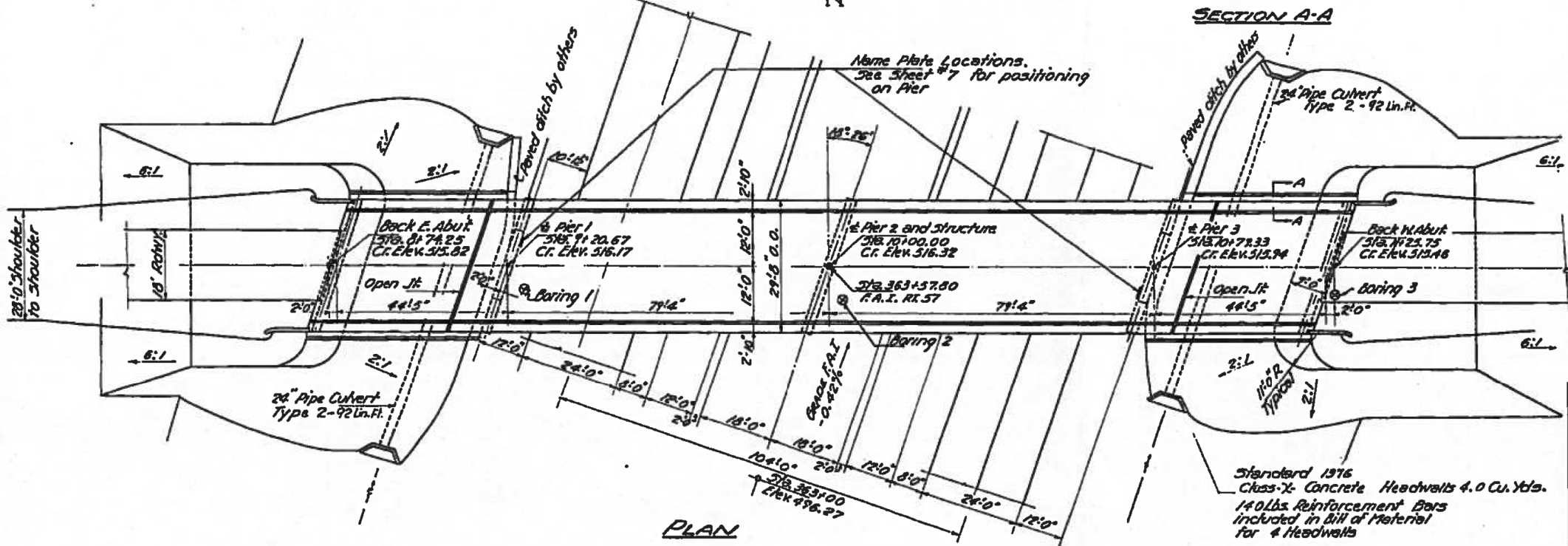
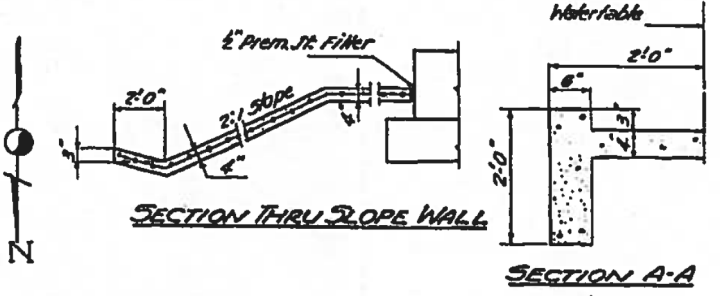
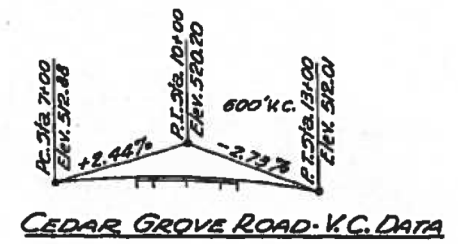
GENERAL NOTES

Class-X Concrete shall be used throughout.
 Coarse aggregate which is to be used in end posts must be free of chert flint, iron pyrites and soft sandstone.
 The Concrete floor slab shall be finished in accordance with Art. 51.19 of the Standard Specifications.
 Slope wall shall be reinforced with welded wire fabric 6x6 mesh #4 wires weighing 30 lbs. per 100 sq. ft.
 All cover plates and beams to which cover plates are welded shall conform to the specifications for Structural Steel for welding, A.S.T.M. Designation A373.
 All rollers bearing plates, shim plates, bed plates, pintles and anchor bolts shall be fabricated and set in accordance with Art. 51.15 of the Standard Specifications and are included in quantity of Structural Steel. Estimated weight - 5850 lbs.
 Anchor bolts shall be set before installing diaphragms over the supports.
 All surfaces of the expansion guards inaccessible after erection shall be given two shop coats of red lead paint except the anchor studs which shall not be painted.
 Expansion guards are included in quantity of Structural Steel. Estimated weight - 1424 lbs.
 Except as otherwise provided, all Structural Steel shall receive one shop coat of red lead paint and two field coats of aluminum paint. See Arts. 56.1 to 56.5 inclusive of the Standard Specifications.
 All paint shall be furnished and applied by the Contractor.
 The Contractor shall drive one steel test pile in permanent location in the East Abutment before ordering the remainder of the piles.

TOTAL BILL OF MATERIAL

ITEM	UNIT	SUPER.	SUB.	TOTAL
Earth Excavation *	Cu. Yds.	3700		3700
Class-A Excavation for Structures	Cu. Yds.	174		174
Rock Excavation for Structures	Cu. Yds.	0		0
Class-X Concrete	Cu. Yds.	205.6	178.9	384.5
Class-X Concrete Headwalls	Cu. Yds.	4.0		4.0
Structural Steel	Lbs.	200070		200070
Metal Handrail	Lin. Ft.	500		500
Pipe Culvert - Type 2 (24")	Lin. Ft.	184		184
Reinforcement Bars	Lbs.	33920	1316.0	4714.0
Steel Piles 8 B.P. 36	Lin. Ft.	347		347
Test Piles Steel 8 B.P. 36	Each	1		1
Name Plates	Each	2		2
Slope Wall	Sq. Yds.	320		320

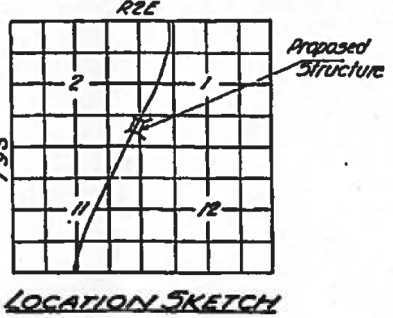
*Included in quantities shown on Plan sheet No. 4



DESIGNED *R. H. Hest*
 CHECKED *Walter J. Perry*
 DRAWN *W. J. Miller*
 CHECKED *W. Z. P.*

EXAMINED *W. E. Baumann*
 PASSED *C. F. Schmitt*
 APPROVED *J. P. Bartholomew*

STATION 363+57.8
 BUILT 196 BY
 STATE OF ILLINOIS
 F.A. I.R. 57-SEC. 7-1-SHD-1
 PROJECT I-57-2(4)56
 LOADS H15-312

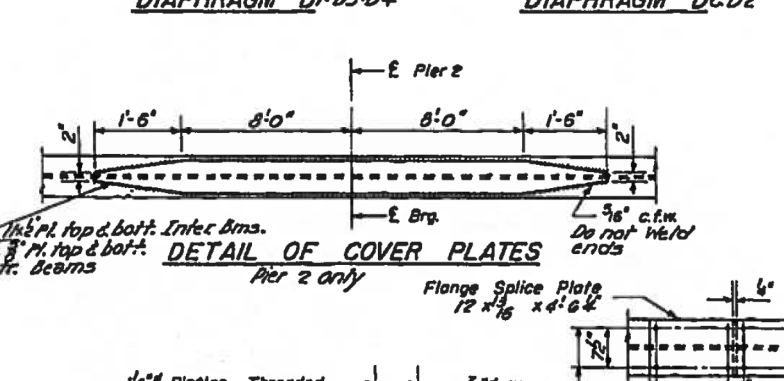
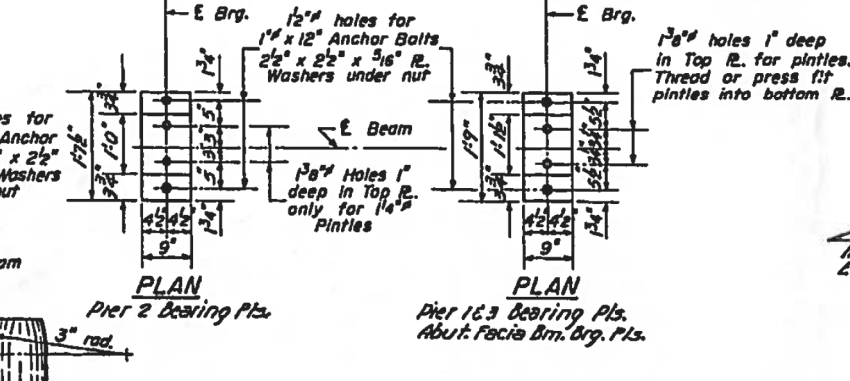
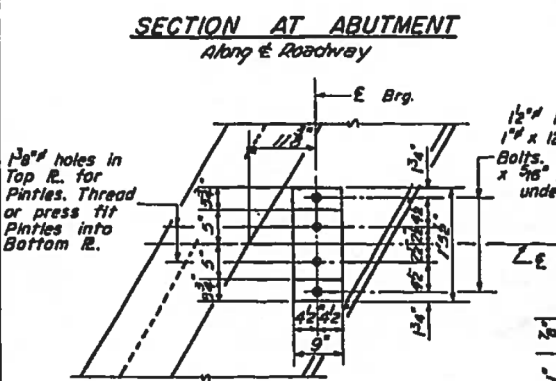
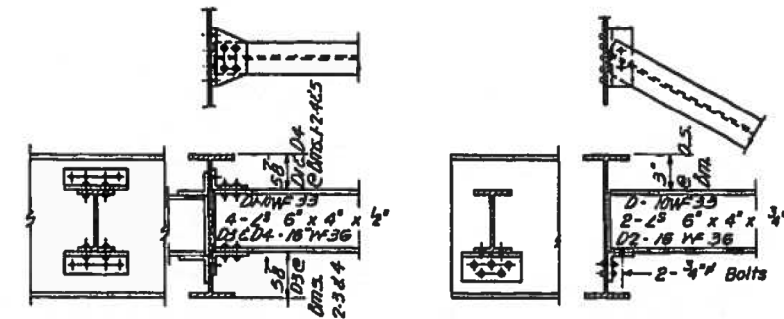
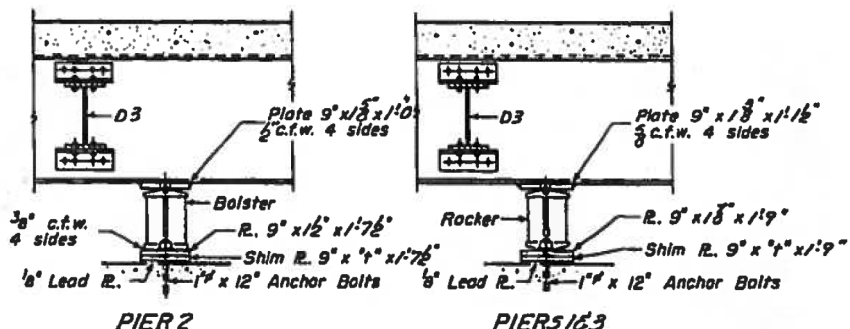
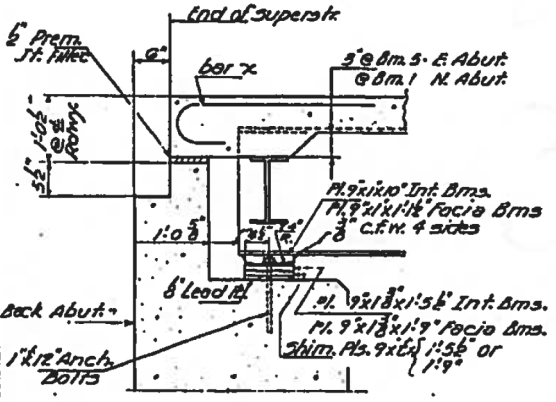
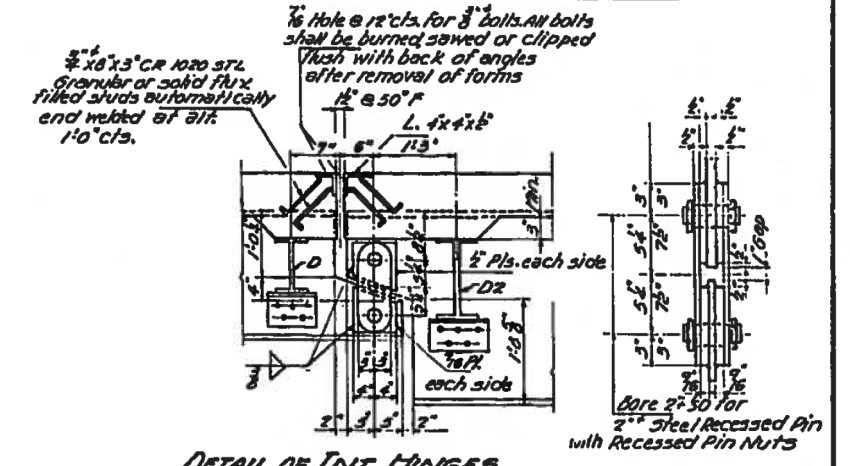
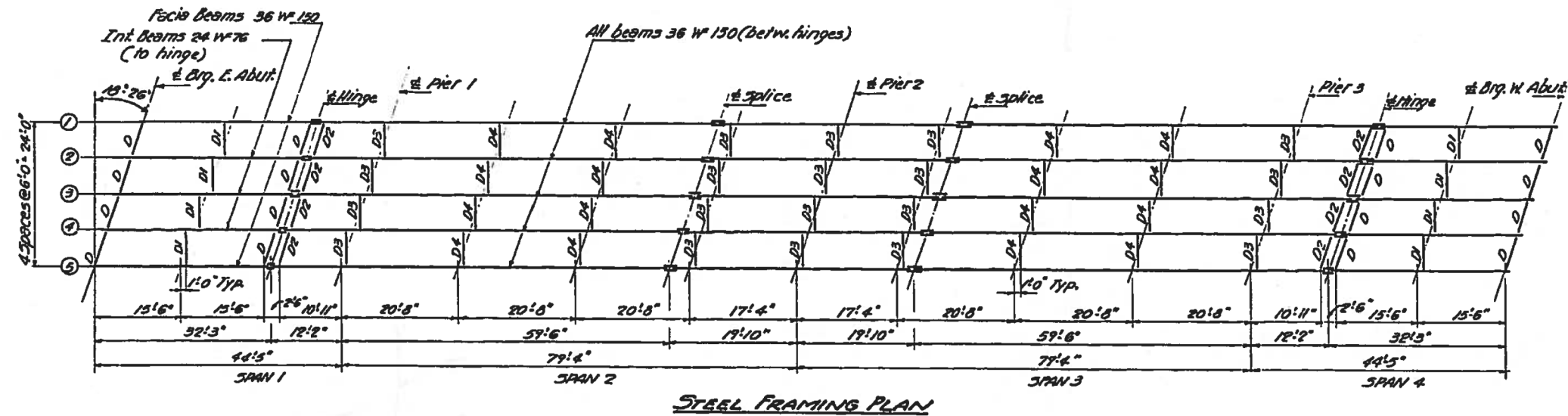


DESIGN STRESSES
 Fc --- 1400 psi Super. 6.00
 Fc --- 75 psi Roofing
 F3 --- 20000 psi Reinf.
 F3 --- 18000 psi Struct.
 F1 --- 10

GENERAL PLAN & ELEVATION
 CEDAR GROVE ROAD
 F.A. I. R. 57-SEC. 7-1-SHD-1
 PROJECT I-57-2(4)56
 WILLIAMSON COUNTY
 STATION 363+57.8

STATE OF ILLINOIS
DEPARTMENT OF PUBLIC WORKS & BUILDINGS
DIVISION OF HIGHWAYS

PROJECT NO.	SECTION	COUNTY	TOTAL SHEETS	SHEET NO.
11-518-1	WILLIAMSON	28	9	8 SHEETS

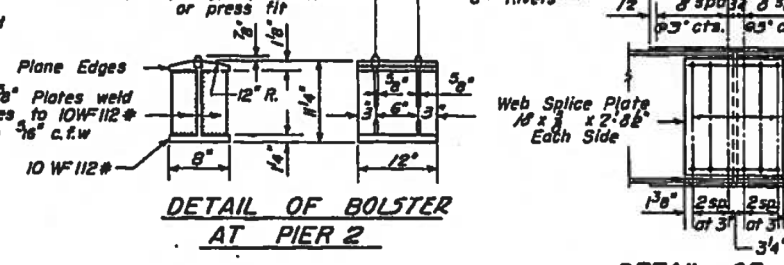
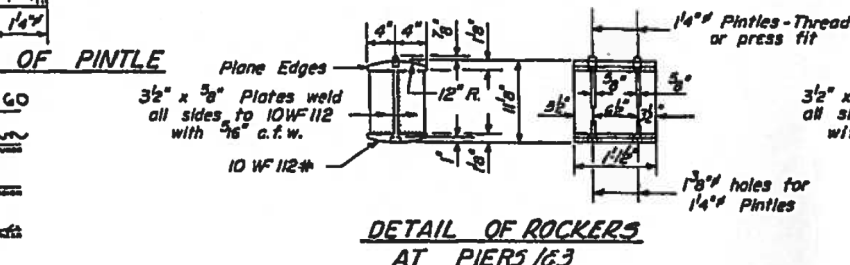


Plan of facia beam bearing pl. is the same as Plan-Piers 1&3

DESIGNED: *Edward*
CHECKED: *Walter Perry*
DRAWN: *W. A. Sausamon*
CHECKED: *W. Z. P.*

EXAMINED: *W. E. Baumann*
PASSED: *R. J. Shurt*
APPROVED: *R. P. Baumann*

Nov. 16 1960



ELEVATION OF BEAMS

Location	Beam 1	Beam 2	Beam 3	Beam 4	Beam 5
E. Brg. E. Abut.	515.17	515.25	515.26	515.21	515.10
E. Hinge span 1	515.41	515.49	515.51	515.47	515.36
E. Brg. Pier 1	515.44	515.52	515.54	515.50	515.40
E. Splice span 2	515.58	515.68	515.71	515.60	515.50
E. Brg. Pier 2	515.55	515.65	515.68	515.65	515.56
E. Splice span 3	515.51	515.61	515.65	515.63	515.54
E. Brg. Pier 3	515.16	515.27	515.31	515.30	515.22
E. Hinge span 4	515.08	515.20	515.25	515.23	515.16
E. Brg. W. Abut.	514.73	514.84	514.90	514.89	514.82

TABLE OF DIMENSIONS

Beams	1	2	3	4	5
E. Abut.	0	2	3	4	0
Pier 1	0	0	0	0	0
Pier 2	0	0	0	0	0
Pier 3	0	0	0	0	0
W. Abut.	0	0	0	0	0

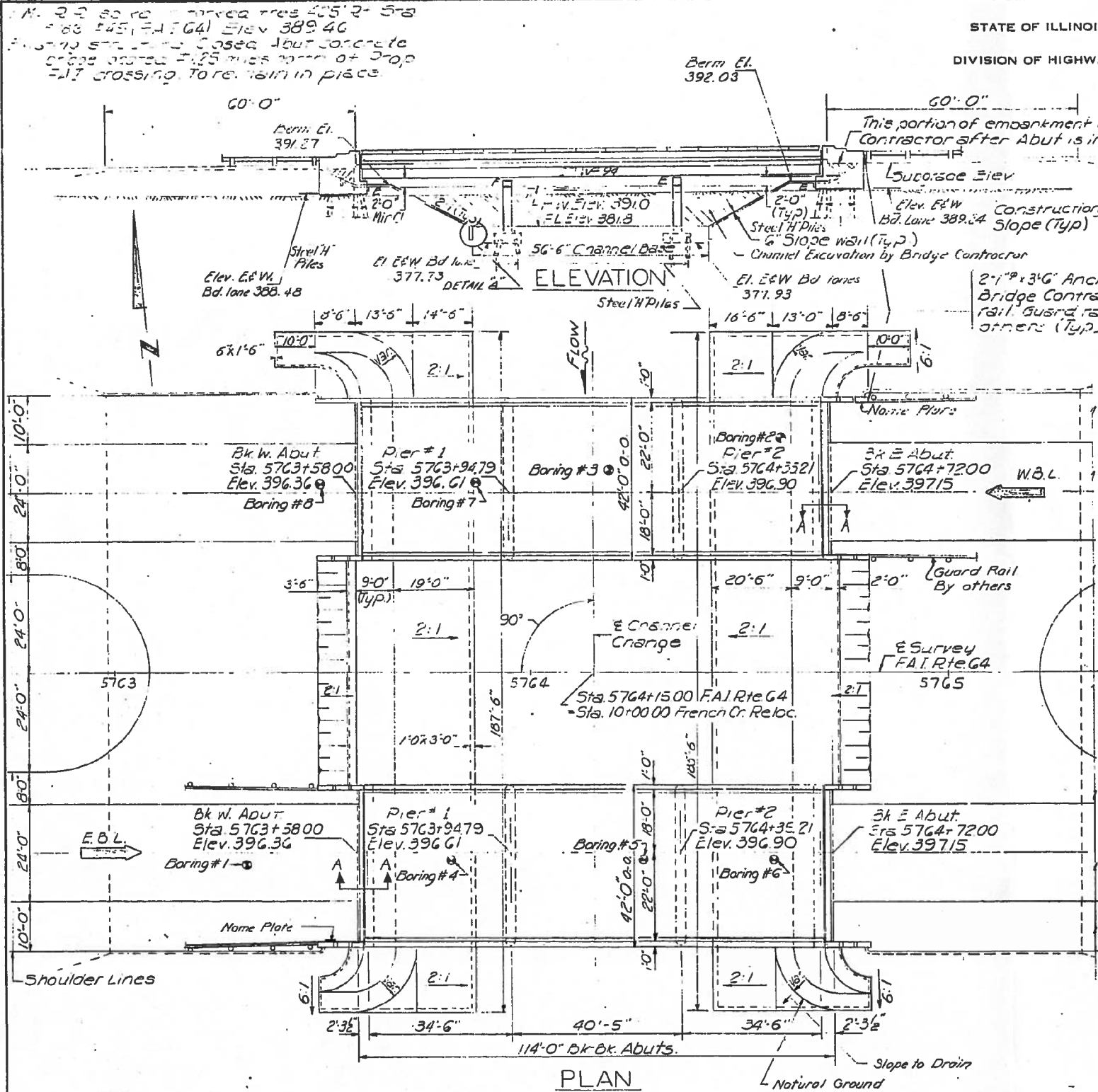
STRUCTURAL STEEL
F.A.I. RT. 57-SEC. 11-518-1
WILLIAMSON COUNTY
STATION 363+57.8

FOR INFORMATION ONLY

097-0051/0052

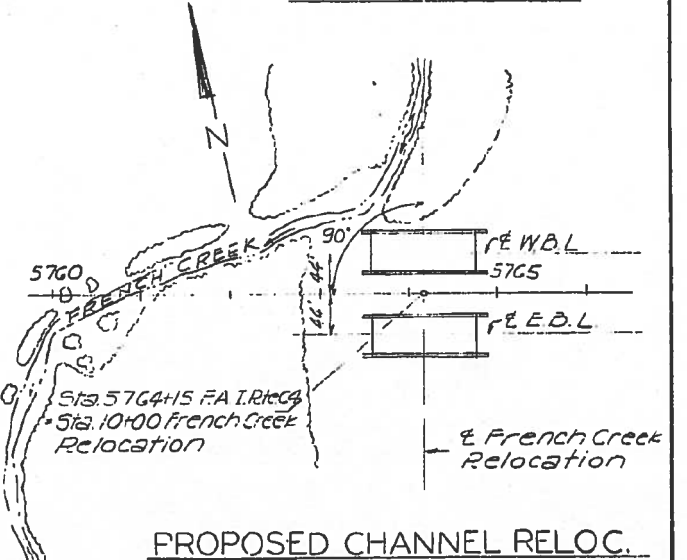
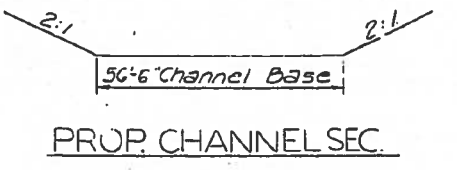
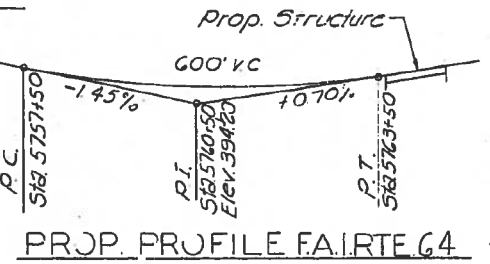
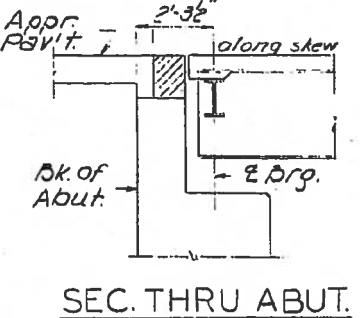
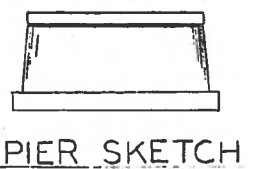
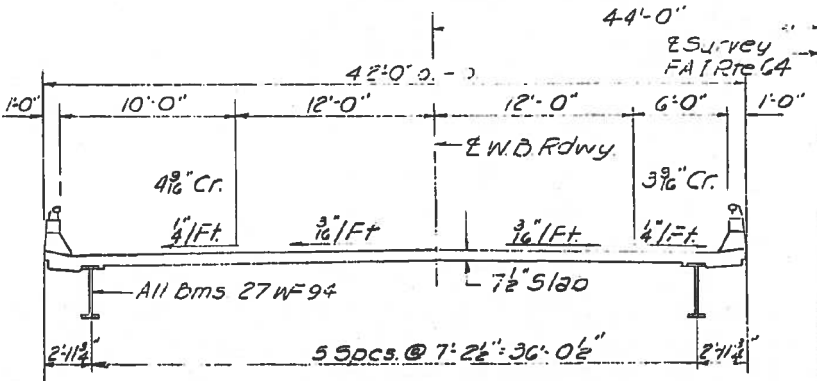
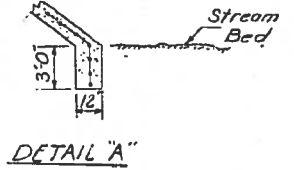
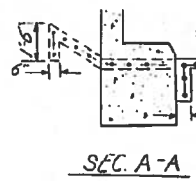
DATE	SECTION	COUNTY	TOTAL SHEETS	SHEET NO.	SHEET FIG.
64-97-18-2	White	22	6	12	SHEETS

STATE OF ILLINOIS
DIVISION OF HIGHWAYS



This portion of embankment back fill by Bridge Contractor after Abut is in place (Typ)

ELEVATION

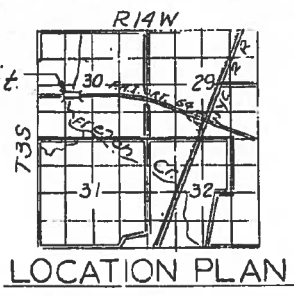


WATERWAY INFORMATION

Drainage Area 9300 Acres
 Character Rolling, wooded & cultiv.
 Req'd. Opening (50 Yr. Fl.) 640 Sq. Ft.
 Present Opening
 Proposed Opening 640 Sq. Ft.
 Ordinary Water Elev. 382.8
 Low Water Elev. 381.8
 High Water Elev. 391.0

DESIGN STRESSES

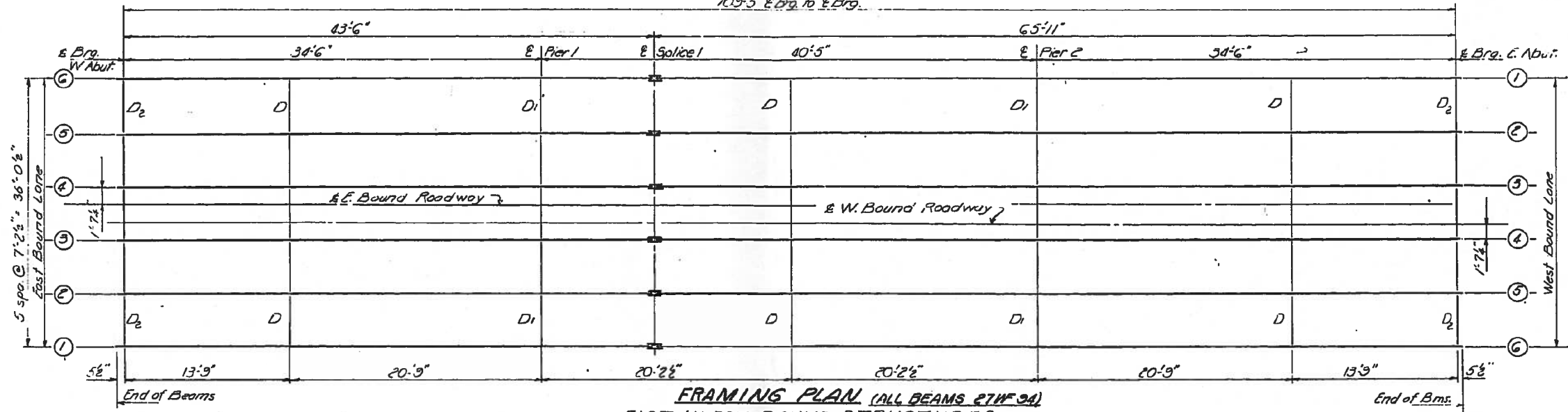
$f_c = 1400$ psi (Super & sub.)
 $f_s = 20000$ psi (Reinf.)
 $f_s = 20000$ psi (Struct.) (A-3C)
 $VC = 75$ psi (Ftqs)
 $n = 10$
 Δ Deflection = $\frac{1}{1000}$
 LOADING HS20-44; ALT.



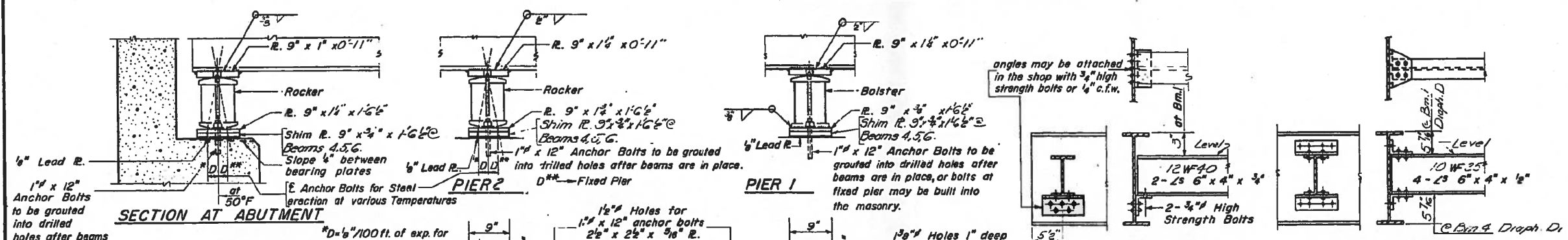
GENERAL PLAN & ELEVATION
 F.A.I. RTE. 64 OVER FRENCH CR.
 PROJ. I-64-4(50)122
 F.A.I. RTE. 64 SEC. 97-2B-2
 WHITE COUNTY
 STA. 5764+15.00

DESIGNED <i>Don. J. Chilton</i>	EXAMINED <i>[Signature]</i>
CHECKED RKT J.F.K.	PASSED <i>[Signature]</i>
DRAWN F.M. D. Derringer	APPROVED <i>[Signature]</i>
CHECKED RKT J.F.K.	

FOR INFORMATION ONLY



FRAMING PLAN (ALL BEAMS 27WF94)
EAST & WEST BOUND STRUCTURES



SECTION AT ABUTMENT

PIER 1

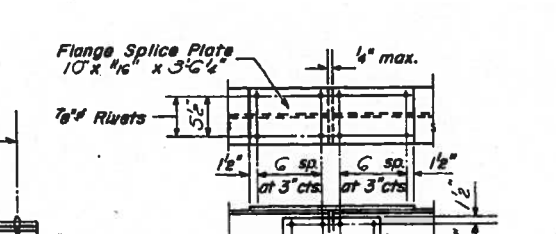
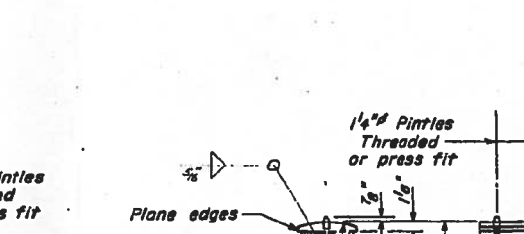
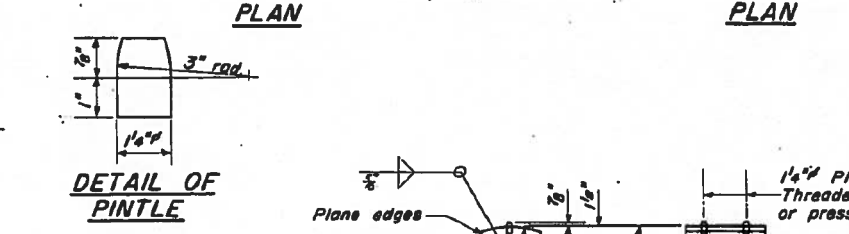
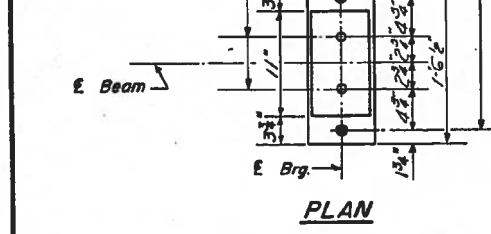
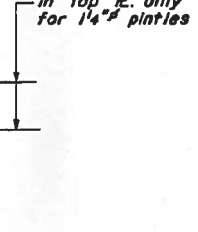
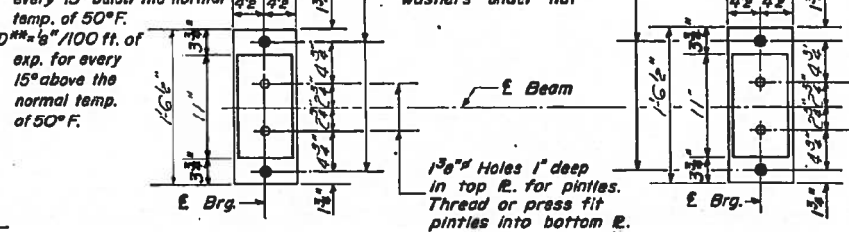
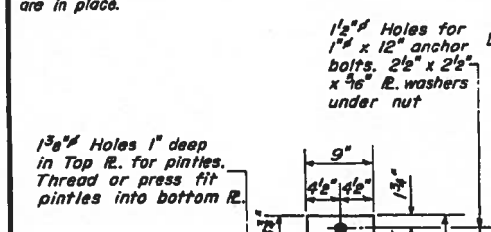
PIER 2

DIAPHRAGM D₂
27 D₂ Required

DIAPHRAGM D₁ & D₂
30 D Required
20 D₁ Required

ELEVATION TOP OF 27WF94
East & West Bound Structures

Beam	E. Brg. W. Abut.	E. Pier 1	E. Sp. 1	E. Pier 2	E. Brg. C. Abut.
1	395.33	395.78	395.62	395.86	396.10
2	395.49	395.73	395.79	396.01	396.25
3	395.60	395.84	395.90	396.11	396.32
4	395.66	395.90	395.96	396.18	396.42
5	395.53	395.79	395.85	396.07	396.31
6	395.40	395.64	395.70	395.92	396.16



DESIGNED: *Garry J. C. Miller*
CHECKED: *J. K.*
DRAWN: *D.D. J.T. Downing*
CHECKED: *J.K.*

EXAMINED: *N.C. Baumann*
PASSED: *N.C. Baumann*
APPROVED: *J.E. Hoff*

DETAIL OF ROCKER
AT ABUTMENT & PIER 2

DETAIL OF BOLSTER
AT PIER 1

DETAIL OF SPLICE

STRUCTURAL STEEL
FAI RT. 64 SEC. 97-2B-2
WHITE COUNTY
STA. 5764+15.00

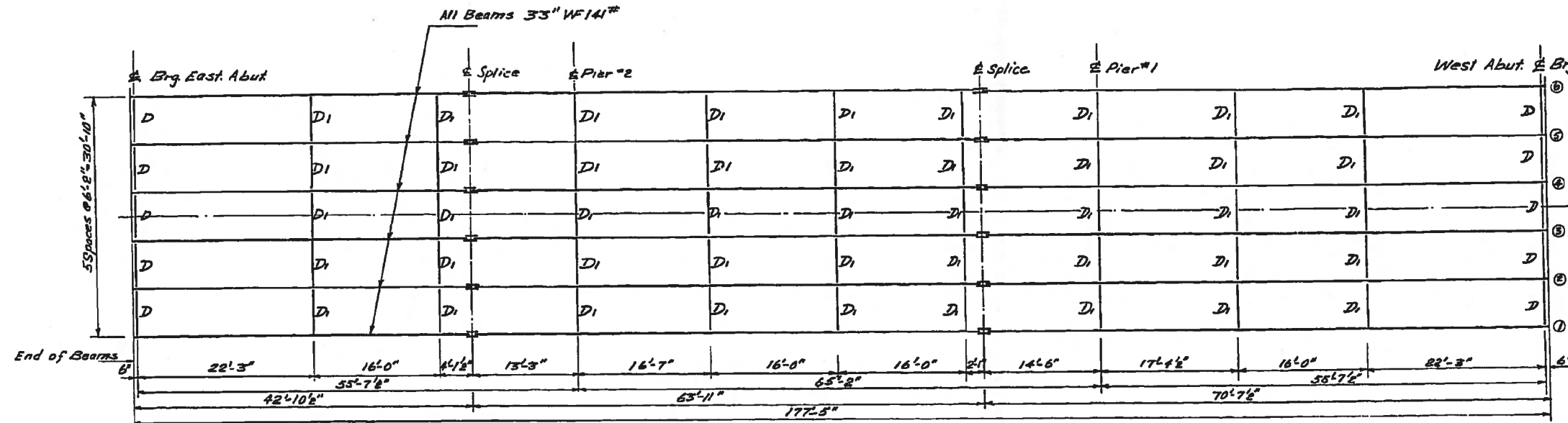
I-2 7-2-62 Rev. 11-9-62 Rev. 8-16-63 Rev. 12-10-63

FOR INFORMATION ONLY

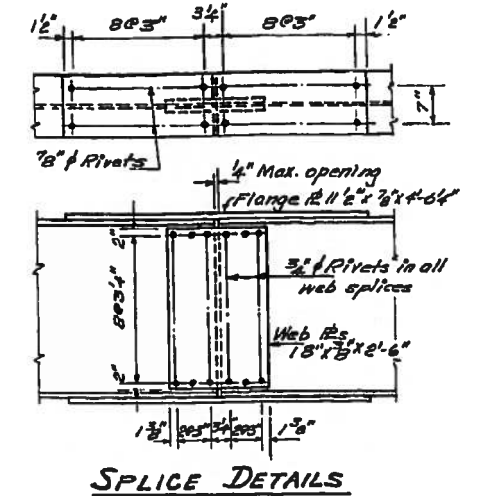
097 0027

STATE OF ILLINOIS
DEPARTMENT OF PUBLIC WORKS & BUILDINGS
DIVISION OF HIGHWAYS

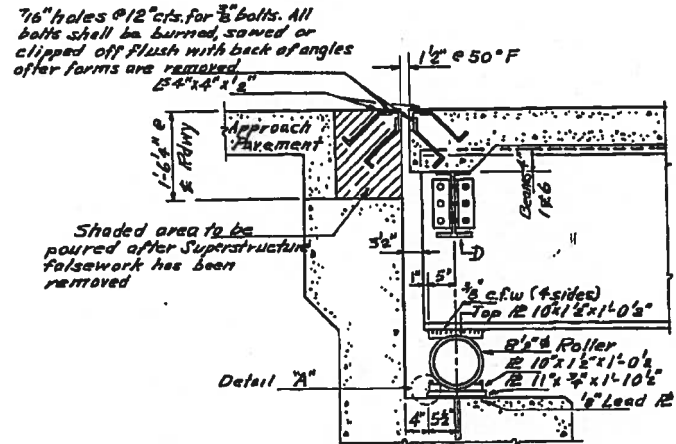
ROUTE NO.	SECTION	COUNTY	TOTAL SHEETS	SHEET NO.
113	100B	White Gallatin	11	8
F.A. RTE. 113			6 SHEETS	



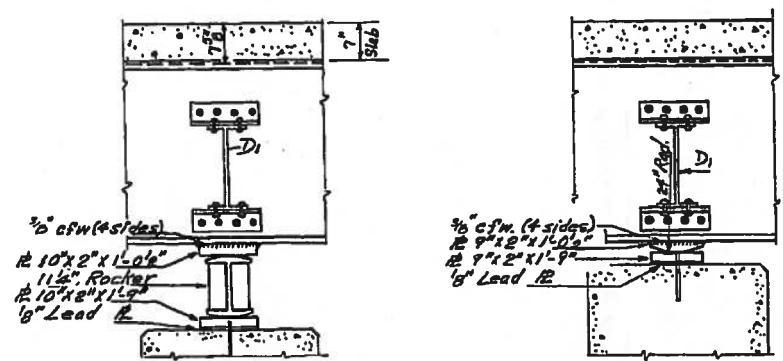
PLAN OF STRUCTURAL STEEL
Scale 1/8"=1'-0"



SPlice DETAILS

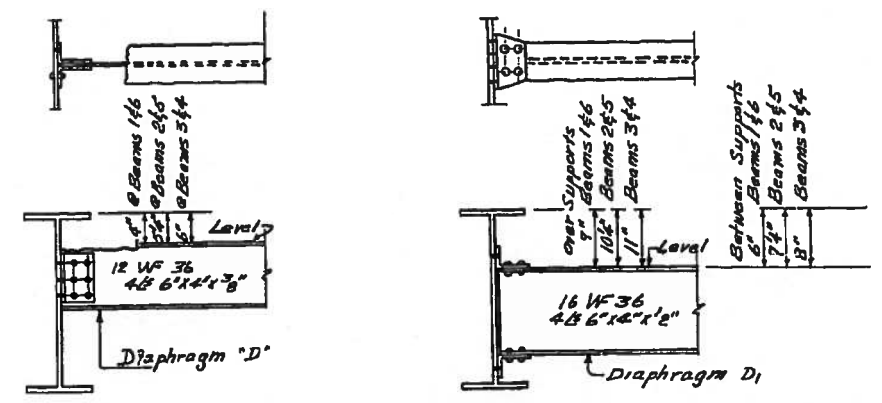


SECTION @ ABUTMENT
Scale 1/4"=1'-0"

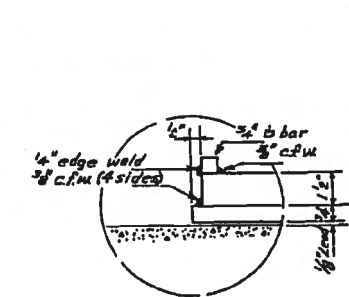


PIER #2
Scale 3/4"=1'-0"

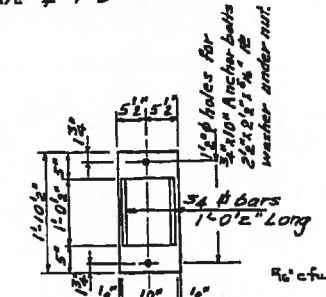
PIER #1
Scale 3/4"=1'-0"



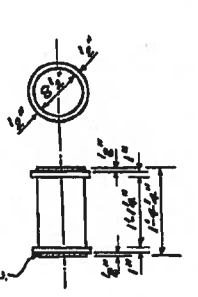
DIAPHRAGM DETAILS



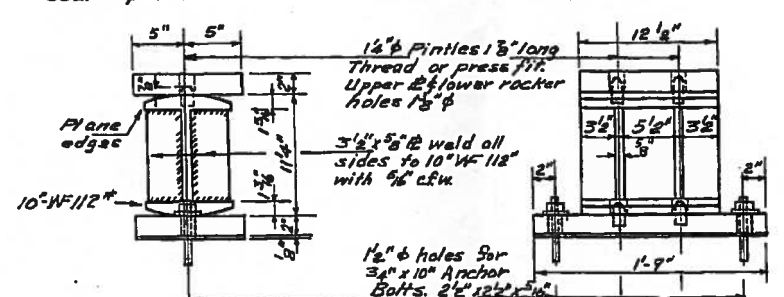
DETAIL 'A'



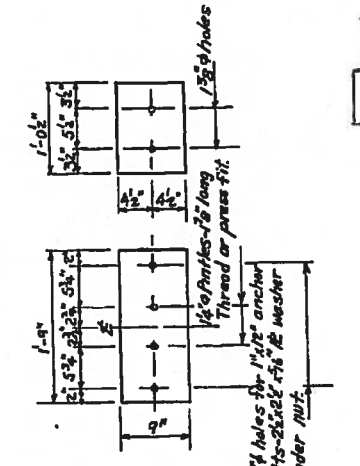
PLAN BOTTOM OF
East & West Abut.



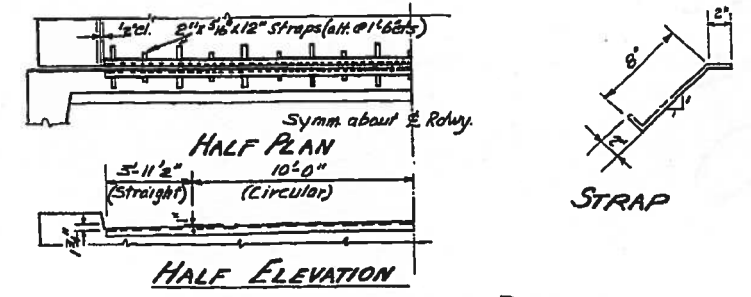
ROLLER



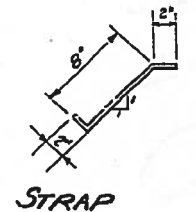
ROCKER DETAIL
Scale 1/2"=1'-0"



PLAN TOP & BOTTOM OF
Pier #1



HALF ELEVATION
EXPANSION GUARD DETAILS



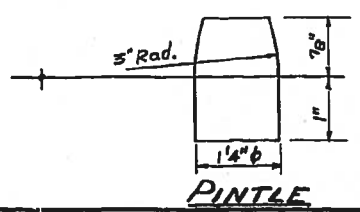
STRAP

STRUCTURAL STEEL
FA RTE 113 SECTION 100B
WHITE COUNTY
STA 48+70

FOR INFORMATION ONLY

DESIGNED	M. G. Carral
CHECKED	H. M. Gray
DRAWN	W. G. J. SANDRUAL
CHECKED	H. M. C.

APRIL 13 1955
EXAMINED
PASSED
APPROVED
1319 B. B. Schaefer



PINTLE