

STATE OF ILLINOIS
DEPARTMENT OF TRANSPORTATION
DIVISION OF HIGHWAYS

**PROPOSED
HIGHWAY PLANS**

FAP ROUTE 873 (IL 149)
SECTION (28-5)TS-5

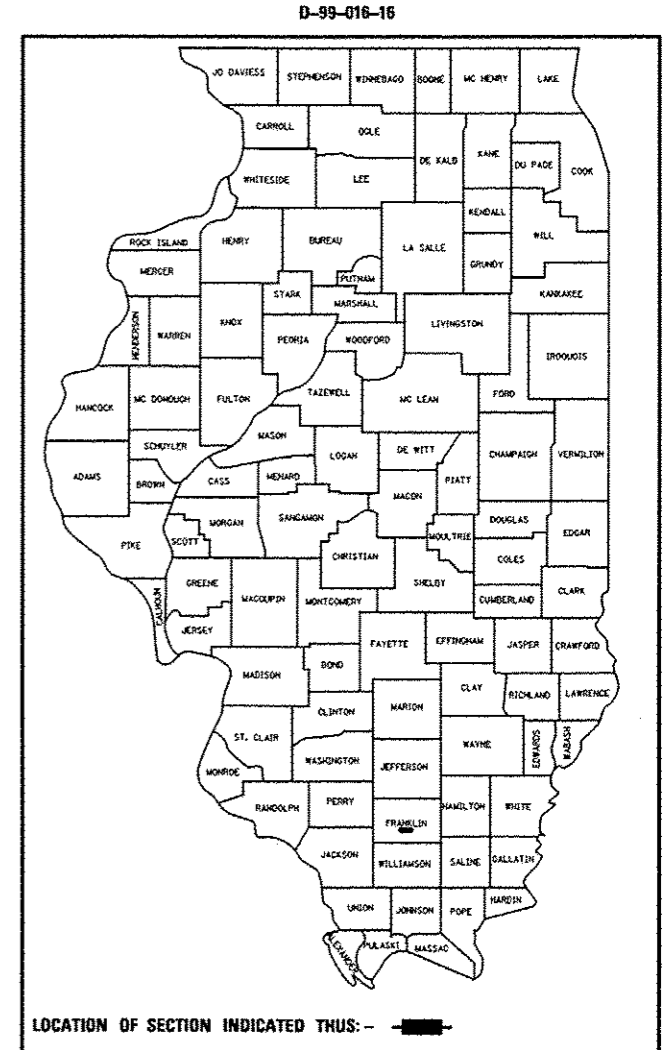
SIGNAL MODIFICATIONS
FRANKLIN COUNTY

F.A.P. RTE.	SECTION	COUNTY	TOTAL SHEETS	SHEET NO.
873	(28-5)TS-5	FRANKLIN	6	1
		ILLINOIS	CONTRACT NO. 78514	

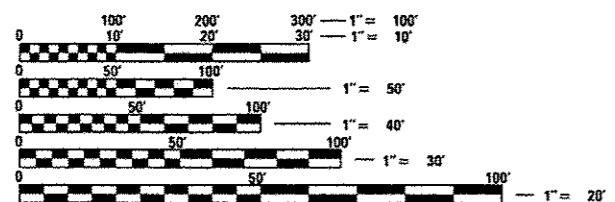
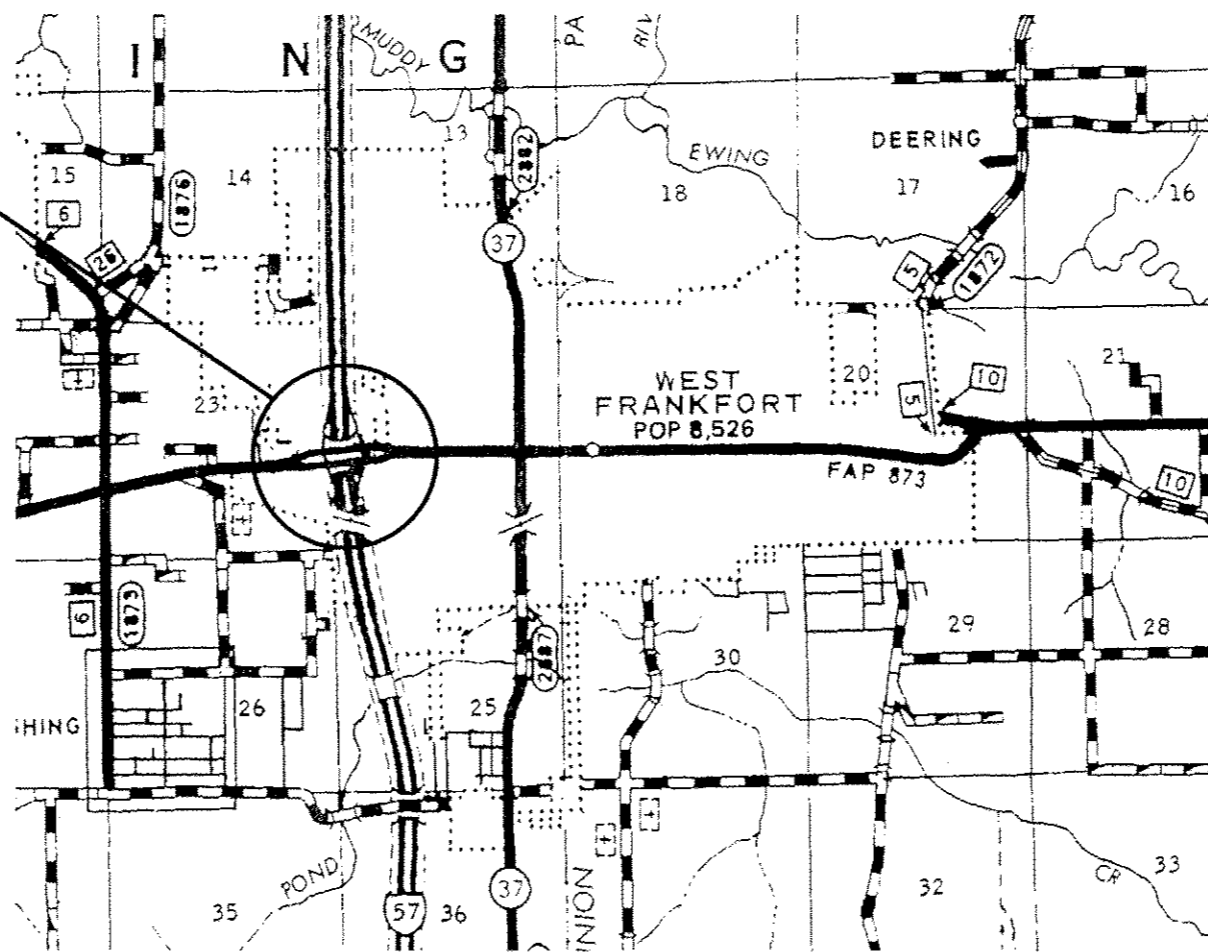
FOR INDEX OF SHEETS, SEE SHEET NO. 2

APPROACH	ADT (2013)	% TRUCKS
IL 14 EAST OF I-57	16000	6%
IL 14 WEST OF I-57	15300	9%

C-99-016-16



PROJECT LOCATION
FAP (873) IL 149 &
I-57 NB AND SB
RAMPS IN WEST FRANKFORT



FULL SIZE PLANS HAVE BEEN PREPARED USING STANDARD ENGINEERING SCALES. REDUCED SIZED PLANS WILL NOT CONFORM TO STANDARD SCALES. IN MAKING MEASUREMENTS ON REDUCED PLANS, THE ABOVE SCALES MAY BE USED.

J.U.L.I.E.
JOINT UTILITY LOCATION INFORMATION FOR EXCAVATION
1-800-892-0123
OR 811

PROJECT ENGINEER SUSAN POE
PROJECT MANAGER SUSAN POE

CONTRACT NO. 78514

STATE OF ILLINOIS
DEPARTMENT OF TRANSPORTATION
DIVISION OF HIGHWAYS

SUBMITTED *Dec 4 20 2015*

Anthony J. Keim
DEPUTY DIRECTOR OF HIGHWAYS, REGION ENGINEER

Jan 29 20 16
Muhammad M. Adoo PE
acting ENGINEER OF DESIGN AND ENVIRONMENT

Jan 29 20 16
Omer Osman PE
DIRECTOR OF HIGHWAYS, CHIEF ENGINEER

PRINTED BY THE AUTHORITY
OF THE STATE OF ILLINOIS

INDEX OF SHEETS

SHEET NO.	DESCRIPTION
1	COVER SHEET
2	INDEX OF SHEETS, LISTING OF HIGHWAY STANDARDS, GENERAL NOTES, COMMITMENTS
3	SUMMARY OF QUANTITIES
4	IL 149 AND I-57 NB TRAFFIC SIGNAL PLAN
5	IL 149 AND I-57 SB TRAFFIC SIGNAL PLAN
6	STANDARD PHASE DESIGNATION DIAGRAMS

GENERAL NOTES

1. THE CONTRACTOR SHALL NOTIFY THE IDOT ENGINEER OF TRAFFIC OPERATIONS 72 HOURS PRIOR TO ANY SIGNAL SHUTDOWN.

COMMITMENTS

NONE

HIGHWAY STANDARDS

000001-06	STANDARD SYMBOLS, ABBREVIATIONS, AND PATTERNS
001006	DECIMAL OF AN INCH AND OF A FOOT
701001-02	OFF-RD OPERATIONS, 2L, 2W, MORE THAN 15' AWAY
701006-05	OFF-RD OPERATIONS, 2L, 2W, 15' TO 24" FROM PAVEMENT EDGE
701011-04	OFF-RD OPERATIONS, 2L, 2W DAY ONLY
701101-04	OFF-ROAD OPERATIONS, MULTILANE, 15' TO 24" FROM PAVEMENT EDGE
701106-02	OFF-ROAD OPERATIONS, MULTILANE, MORE THAN 15' AWAY
701901-04	TRAFFIC CONTROL DEVICES
805001-01	ELECTRICAL SERVICE INSTALLATION DETAILS
857001-01	STANDARD PHASE DESIGNATION DIAGRAMS AND PHASE SEQUENCES
878001-10	CONCRETE FOUNDATION DETAILS

Prepared By:

[Signature]
 DISTRICT STUDIES & PLANS ENGINEER

Examined By:

[Signature]
 DISTRICT LAND ACQUISITION ENGINEER

Examined By:

[Signature]
 DISTRICT PROGRAM DEVELOPMENT ENGINEER

Examined By:

[Signature]
 DISTRICT OPERATIONS ENGINEER

Examined By:

[Signature]
 DISTRICT PROJECT IMPLEMENTATION ENGINEER

Examined By:

[Signature]
 DISTRICT CONSTRUCTION ENGINEER

Examined By:

[Signature]
 DISTRICT MATERIALS ENGINEER

FILE NAME *	USER NAME = poosl	DESIGNED -	REVISED -	STATE OF ILLINOIS DEPARTMENT OF TRANSPORTATION	INDEX OF SHEETS, HIGHWAY STAND GENERAL NOTES, COMMITMENTS	F.A.P RTE.	SECTION	COUNTY	TOTAL SHEETS	SHEET NO.
pw\11884EBIDINTEG.illinois.gov\PIDOT\Documents\IDOT Offices\District 9\Projects\78514\DRAWING\CAD\sheet\shd.dgn		CHECKED -	REVISED -			873	(28-5)TS-5	FRANKLIN	6	2
PLOT SCALE = 100.0000' / 1" =		DATE -	REVISED -			CONTRACT NO. 78514				
PLOT DATE = 11/16/2015						ILLINOIS FED. AID PROJECT				
#MODELNAME#				SCALE:	SHEET	OF	SHEETS	STA.	TO STA.	

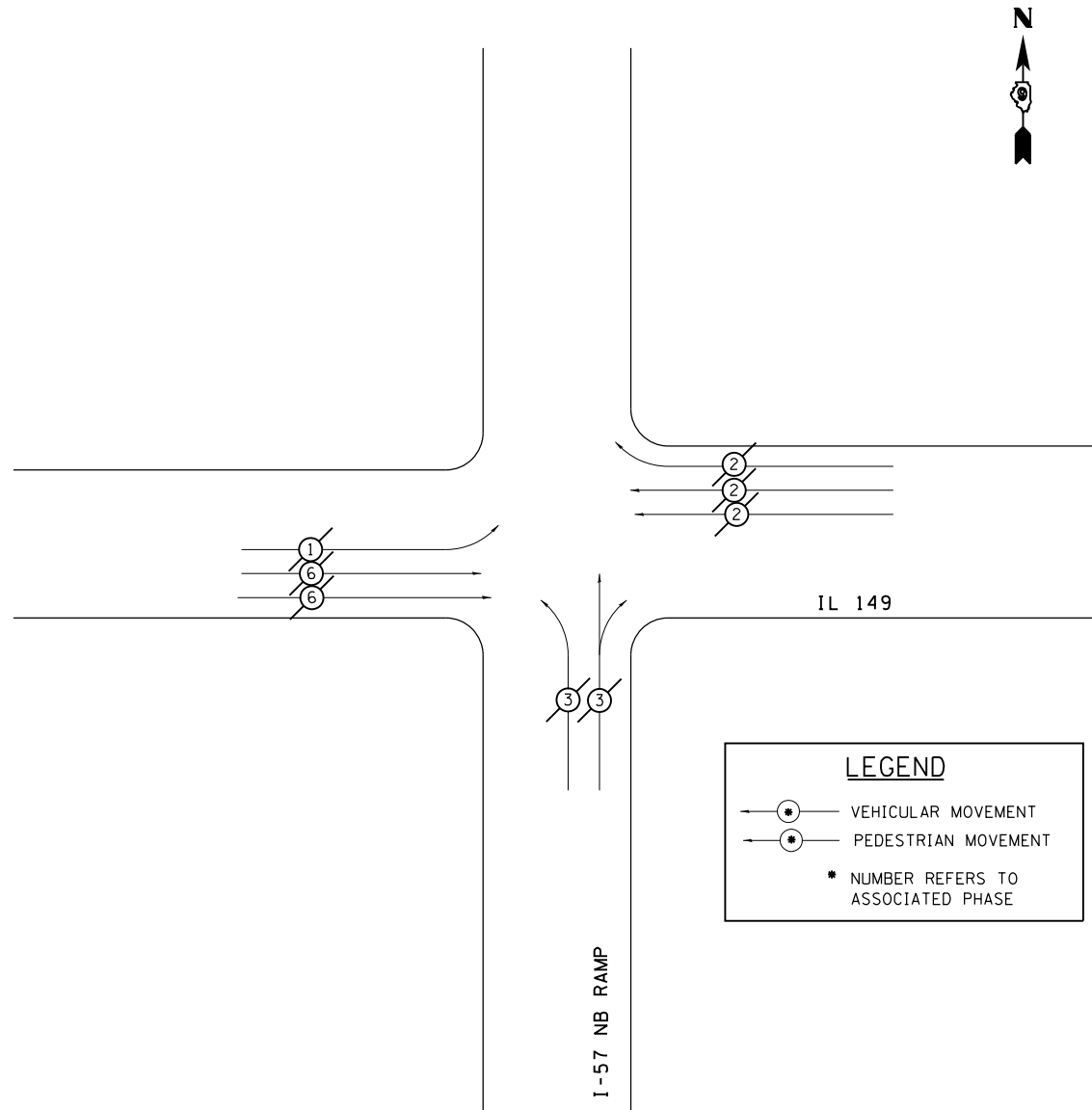
SUMMARY OF QUANTITIES

SUMMARY OF QUANTITIES			CONSTRUCTION CODE	
			COUNTY	FRANKLIN
			FUNDING	100% STATE
CODE NO.	ITEM	UNIT	TOTAL QUANTITY	ROADWAY
				0021
				URBAN
X8850106	INDUCTIVE LOOP DETECTOR, RACK MOUNTED	EACH	16	16
67100100	MOBILIZATION	L SUM	1	1
85700200	FULL-ACTUATED CONTROLLER AND TYPE IV CABINET	EACH	2	2
86000100	MASTER CONTROLLER	EACH	1	1

4

PHASE DESIGNATION DIAGRAM

REFERRING TO STANDARD 857001, THE VEHICULAR AND PEDESTRIAN PHASES USED ARE DESIGNATED AS SHOWN.



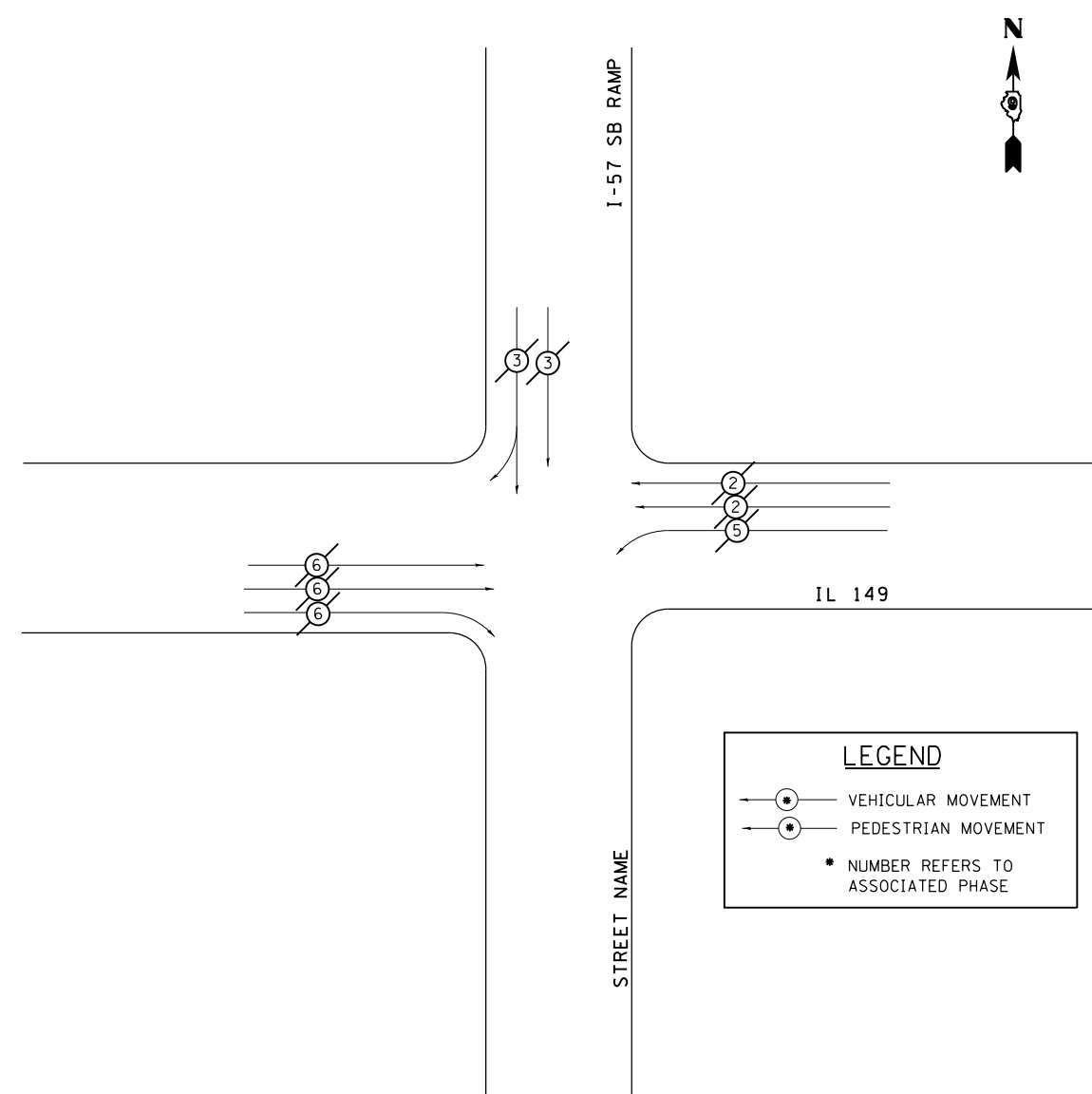
STANDARD PHASE DESIGNATION DIAGRAM
IL 149 AND I-57 NB RAMPS

REVISIONS	
DRAWN	1-31-90
REVISED	5-30-90
REVISED	12-18-01
REVISED	3-27-08
REVIEWED	5-17-13

STD. 9-66

PHASE DESIGNATION DIAGRAM

REFERRING TO STANDARD 857001, THE VEHICULAR AND PEDESTRIAN PHASES USED ARE DESIGNATED AS SHOWN.



STANDARD PHASE DESIGNATION DIAGRAM
IL 149 AND I-57 SB RAMPS

REVISIONS	
DRAWN	1-31-90
REVISED	5-30-90
REVISED	12-18-01
REVISED	3-27-08
REVIEWED	5-17-13

STD. 9-66

FILE NAME =	USER NAME = poesl	DESIGNED -	REVISED -
pw:\IL\084EBIDINTEG.illinois.gov\PIWIDOT\Documents\IDOT Offices\District 9\Projects\7854\Drawings\CAD\Sheets\shd.dgn		CHECKED -	REVISED -
Default	PLOT DATE = 2/11/2016	DATE -	REVISED -

STATE OF ILLINOIS
DEPARTMENT OF TRANSPORTATION

STANDARD PHASE
DESIGNATION DIAGRAMS

SCALE: SHEET OF SHEETS STA. TO STA.

F.A.P. RTE.	SECTION	COUNTY	TOTAL SHEETS	SHEET NO.
873	(28-5)TS-5	FRANKLIN	6	6
				CONTRACT NO. 78514
ILLINOIS FED. AID PROJECT				