

STATE OF ILLINOIS  
DEPARTMENT OF TRANSPORTATION  
DIVISION OF HIGHWAYS  
**PLANS FOR PROPOSED  
FAU 8898 - COTTONWOOD ROAD  
RESURFACING  
VILLAGE OF GLEN CARBON  
MADISON COUNTY**

ROUTE NO	SECTION	COUNTY	SHEET NO.	TOTAL SHEETS
F.A.U. 8898	14-00001-00-RS	MADISON	1	11
FEDERAL AID PROJECT CONTRACT NO. 97811				

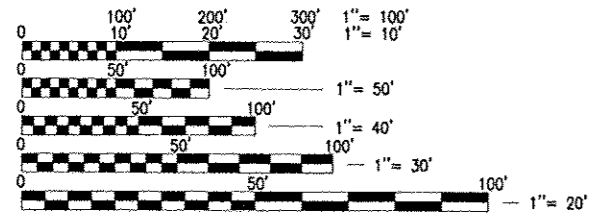
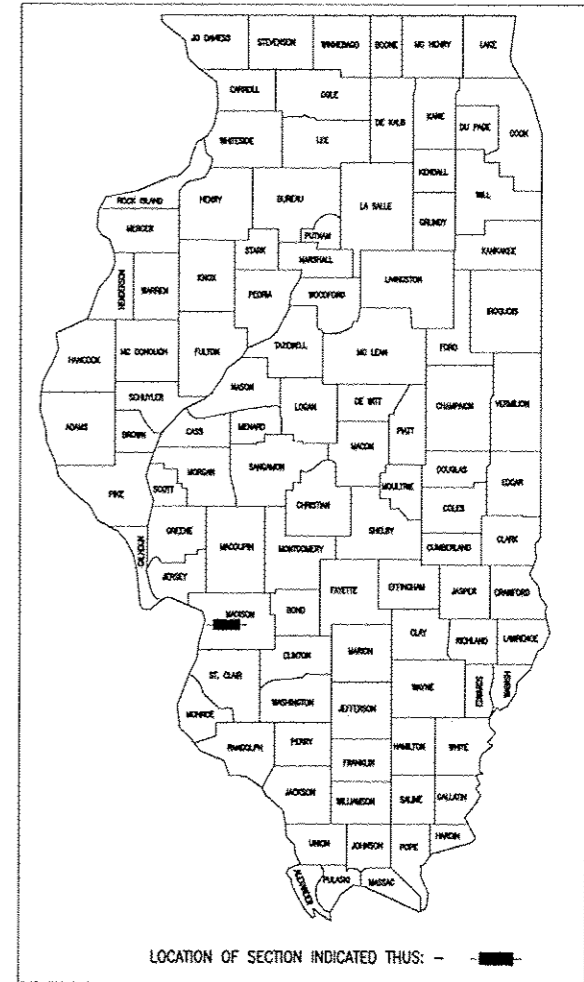
INDEX OF SHEETS

SHEET NO.	DESCRIPTION
1	COVER SHEET
2	GENERAL NOTES
3	SUMMARY OF QUANTITIES
4	EX. TYPICAL SECTIONS
5	PR. TYPICAL SECTIONS
6	SCHEDULES
7-9	PLAN SHEET
10-11	FLASHING BEACON DETAIL

HIGHWAY STANDARDS

- 424001-08 (PERPENDICULAR CURB RAMPS FOR SIDEWALKS)
- 424016-02 (MID-BLOCK CURB RAMPS FOR SIDEWALKS)
- 442201-03 (CLASS C AND D PATCHES)
- 606001-06 (CONCRETE CURB, TYPE B, AND COMBINATION CONCRETE CURB AND GUTTER)
- 701306-03 (LANE CLOSURE, 2L, 2W, SLOW MOVING OPERATIONS DAY ONLY FOR SPEEDS > 45 MPH)
- 701311-03 (LANE CLOSURE 2L, 2W MOVING OPERATIONS DAY ONLY)
- 701501-06 (URBAN LANE CLOSURE, 2L, 2W, UNDIVIDED)
- 701901-04 (TRAFFIC CONTROL DEVICES)
- 780001-05 (TYPICAL PAVEMENT MARKING)
- 701801-05 SIDEWALK, CORNER OR CROSSWALK CLOSURE

PROJECT NO. M5011 (411)  
SECTION 14-00001-00-RS  
JOB NO. C-98-329-14



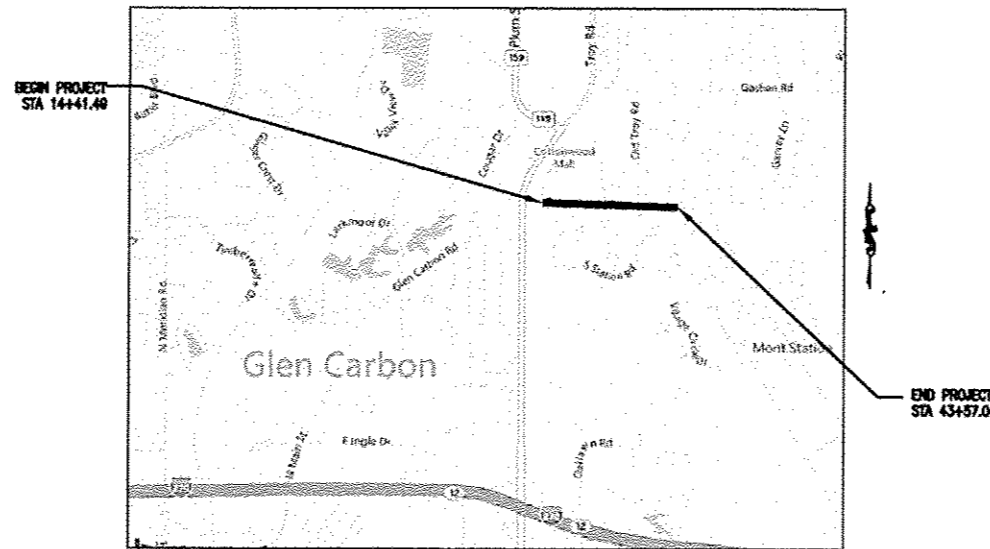
FULL SIZE PLANS HAVE BEEN PREPARED USING STANDARD ENGINEERING SCALES, REDUCED SIZED PLANS WILL NOT CONFORM TO STANDARD SCALES, IN MAKING MEASUREMENTS ON REDUCED PLANS, THE ABOVE SCALES MAY BE USED.

F.A.U. ROUTE 8898 DESIGN DESIGNATION  
ROADWAY CLASSIFICATION = MINOR ARTERIAL  
DESIGN SPEED = 35 M.P.H.  
CURRENT TRAFFIC (ADT) = 15,200

LIST OF UTILITIES

WATER	VILLAGE OF GLEN CARBON
SANITARY	VILLAGE OF GLEN CARBON
CABLE	CHARTER COMMUNICATIONS
ELECTRIC	AMEREN IP
GAS	AMEREN IP
TELEPHONE	AT&T

J.U.L.I.E.  
JOINT UTILITY LOCATION INFORMATION FOR EXCAVATION  
1-800-892-0123



\*NOT TO SCALE  
LOCATION MAP

GROSS LENGTH = 2,915.55 FEET (0.55 MILES)  
NET LENGTH = 2,915.55 FEET (0.55 MILES)

VILLAGE OF GLEN CARBON	
APPROVED	<i>[Signature]</i> MAYOR OF GLEN CARBON
PASSED	11/23/15 <i>[Signature]</i> DISTRICT 8 ENGINEER OF LOCAL ROADS & STREETS
RELEASING FOR BID BASED ON LIMITED REVIEW	11/23/15 <i>[Signature]</i> DEPUTY DIRECTOR OF HIGHWAYS REGION FIVE ENGINEER



*[Signature]* 11/23/15  
JUSTIN J. VENVERTLOH, P.E. NO. 062-060944 DATE  
EXPIRES NOVEMBER 30, 2017

PRINTED BY AUTHORITY OF  
THE STATE OF ILLINOIS



GENERAL NOTES

- ① NO UTILITY CONFLICTS ARE ANTICIPATED AS A PART OF THIS PROJECT, HOWEVER THE ENGINEER AND OWNER FURTHER DO NOT WARRANT THAT ALL UTILITIES HAVE BEEN ILLUSTRATED ON THESE DOCUMENTS. THE CONTRACTOR IS SOLELY RESPONSIBLE FOR CONTACTING J.U.L.I.E. FOR FIELD VERIFICATION OF ALL UTILITIES ON THE SITE PRIOR TO COMMENCEMENT OF CONSTRUCTION. IF THE CONTRACTOR DETERMINES THAT SUBSTANTIAL DISCREPANCY EXISTS BETWEEN FIELD VERIFIED UTILITIES AND THESE PLANS WHICH WOULD SIGNIFICANTLY AFFECT THE FUNCTION, COST, OR PERFORMANCE OF THE PROJECT, THE CONTRACTOR SHALL IMMEDIATELY CONTACT THE ENGINEER FOR CLARIFICATION AND PROJECT DIRECTION.
- ② ALL TRAFFIC CONTROL INCLUDING BUT NOT LIMITED TO, WORK ZONE, TEMPORARY, AND PERMANENT, SHALL BE FURNISHED, INSTALLED, MAINTAINED, RELOCATED, AND/OR REMOVED ACCORDING TO SECTION 700 OF THE LATEST EDITION OF THE IDOT STANDARD SPECIFICATIONS FOR ROAD AND BRIDGE CONSTRUCTION AND THE LATEST EDITION OF THE MANUAL ON UNIFORM TRAFFIC CONTROL DEVICES.
- ③ THE CONTRACTOR IS RESPONSIBLE FOR CONTACTING THE VILLAGE OF GLEN CARBON AT LEAST FORTY-EIGHT (48) HOURS IN ADVANCE PRIOR TO COMMENCEMENT OF ANY CONSTRUCTION ACTIVITIES OR WORK REQUIRING INSPECTION OR APPROVAL BY THE AFFECTED UNITS OF GOVERNMENT.
- ④ THE EXISTING RIGHT OF WAY LINES AND WIDTHS WERE TAKEN FROM EXISTING RECORD DRAWINGS, THERE LOCATION SHALL BE CONSIDERED APPROXIMATE AND ARE SHOWN FOR INFORMATIONAL PURPOSES ONLY.

COMMITMENTS: NONE

HOT-MIX ASPHALT MIXTURE REQUIREMENTS:

MIXTURE USE	SURFACE COURSE	BINDER COURSE
AC/PG	PG 64-22	PG 64-22
RAP% (MAX)	10%	10%
DESIGN AIR VOIDS	4.0% • Ndes=70	4.0% • Ndes=70
MIX COMPOSITION (GRADATION MIXTURE)	IL 9.5 OR IL 12.5	
FRICTION AGG	MIXTURE 0	MIXTURE 8

\* BINDER COURSE TO BE USED IN PAVEMENT PATCHING

BASIS OF QUANTITIES:

HMA SURFACE COURSE - 115 LB/SY/IN.

FILE NAME =	USER NAME = *USER*	DESIGNED -- JJV	REVISED -- _____	<b>STATE OF ILLINOIS DEPARTMENT OF TRANSPORTATION</b>	<b>GENERAL NOTES</b>			F.A.U. RTE.	SECTION	COUNTY	TOTAL SHEETS	SHEET NO.
#FILE#		DRAWN -- PDH	REVISED -- _____		F.A.U. 8898 - COTTONWOOD ROAD			8898	14-00001-00-RS	MADISON	11	2
#MODELNAME#		CHECKED -- JJV	REVISED -- _____		SCALE: N.T.S.	SHEET 1	OF 1 SHEETS	STA. 14+41.09	TO STA. 43+57.04	CONTRACT NO. 97611		
		DATE -- JUNE 2015	REVISED -- _____		ILLINOIS FED. AID PROJECT							

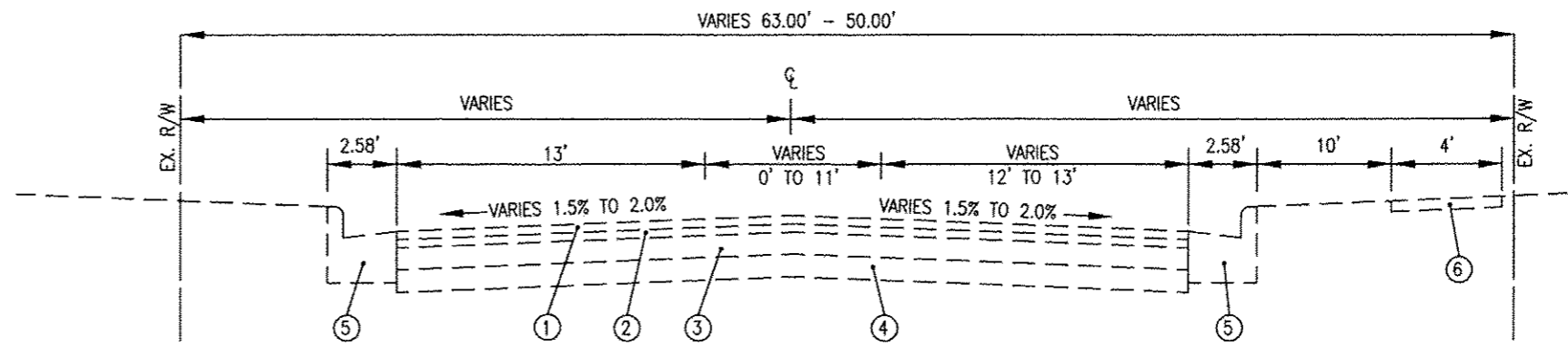
SUMMARY OF QUANTITIES

CODE NO	PAY ITEM	UNIT	TOTAL QUANTITIES
40600990	TEMPORARY RAMP	SQ YD	40
40603340	HOT-MIX ASPHALT SURFACE COURSE, MIX "D", N70	TON	737
42400100	PORTLAND CEMENT CONCRETE SIDEWALK 4 INCH	SQ FT	687
42400800	DETECTABLE WARNINGS	SQ FT	112
44000155	HOT-MIX ASPHALT SURFACE REMOVAL, 1 1/2"	SQ YD	8,536
44000500	COMBINATION CURB AND GUTTER REMOVAL	FOOT	32
44000600	SIDEWALK REMOVAL	SQ FT	815
44200150	PAVEMENT PATCHING, TYPE IV, 12 INCH	SQ YD	229
44300100	AREA REFLECTIVE CRACK CONTROL TREATMENT	SQ YD	8,536
48102100	AGGREGATE WEDGE SHOULDER, TYPE B	TON	90
60603800	COMBINATION CONCRETE CURB AND GUTTER, TYPE B-6.12	FOOT	32
67100100	MOBILIZATION	L SUM	1
70100460	TRAFFIC CONTROL AND PROTECTION, STANDARD 701306	L SUM	1
SP 70102620	TRAFFIC CONTROL AND PROTECTION, STANDARD 701501	L SUM	1
70102640	TRAFFIC CONTROL AND PROTECTION, STANDARD 701801	L SUM	1
70300100	SHORT TERM PAVEMENT MARKING	FOOT	531
70300220	TEMPORARY PAVEMENT MARKING - LINE 4"	FOOT	531
70301000	WORK ZONE PAVEMENT MARKING REMOVAL	SQ FT	2,122
72000100	SIGN PANEL - TYPE 1	SQ FT	17
78000100	THERMOPLASTIC PAVEMENT MARKING - LETTERS AND SYMBOLS	SQ FT	31
78000200	THERMOPLASTIC PAVEMENT MARKING - LINE 4"	FOOT	3,647
78000600	THERMOPLASTIC PAVEMENT MARKING - LINE 12"	FOOT	125
78000650	THERMOPLASTIC PAVEMENT MARKING - LINE 24"	FOOT	269

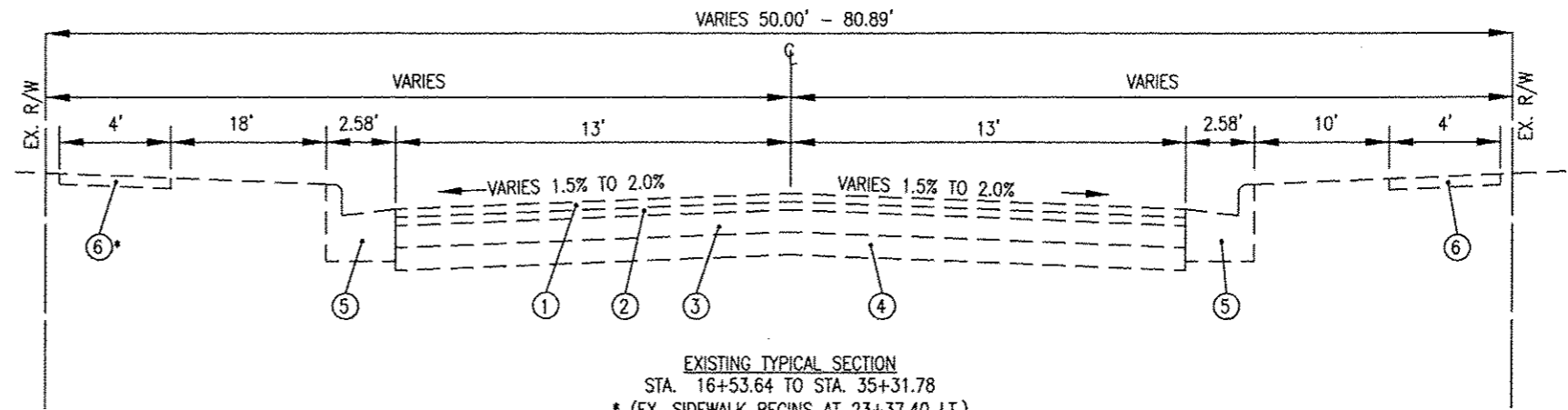
CODE NO	PAY ITEM	UNIT	TOTAL QUANTITIES
* 78001150	PAINT PAVEMENT MARKING - LINE 12"	FOOT	17
* 78001180	PAINT PAVEMENT MARKING - LINE 24"	FOOT	48
* 78200410	GUARDRAIL MARKERS, TYPE A	EACH	8
* 81028340	UNDERGROUND CONDUIT, PVC, 1 1/2" DIA.	FOOT	56
* SP 81028350	UNDERGROUND CONDUIT, PVC, 2" DIA.	FOOT	7
* 81028360	UNDERGROUND CONDUIT, PVC, 2 1/2" DIA.	FOOT	6
* 81400700	HANDHOLE, PORTLAND CEMENT CONCRETE	EACH	2
* 85820200	FLASHER CONTROLER SPECIAL	EACH	1
* 87301245	ELECTRIC CABLE IN CONDUIT, SIGNAL NO. 14 5C	FOOT	170
* 87301817	ELECTRIC CABLE IN CONDUIT, SERVICE, NO. 6 4 C	FOOT	28
* 87301900	ELECTRIC CABLE IN CONDUIT, EQUIPMENT GROUNDING CONDUCTOR, NO. 6 1C	FOOT	131
* 87502700	TRAFFIC SIGNAL POST, ALUMINUM 16 FT.	EACH	2
* 87800100	CONCRETE FOUNDATION, TYPE A	FOOT	6
* 88040020	SIGNAL HEAD, POLYCARBONATE, LED, 1-FACE, 1-SECTION, BRACKET MOUNTED	EACH	4
* SP X8880010	ADA PEDESTRIAN PUSH-BUTTON	EACH	2
* SP X8050115	SERVICE INSTALLATION, TYPE A (MODIFIED)	EACH	1

SP - SPECIAL PROVISION  
 \* - SPECIALTY ITEM

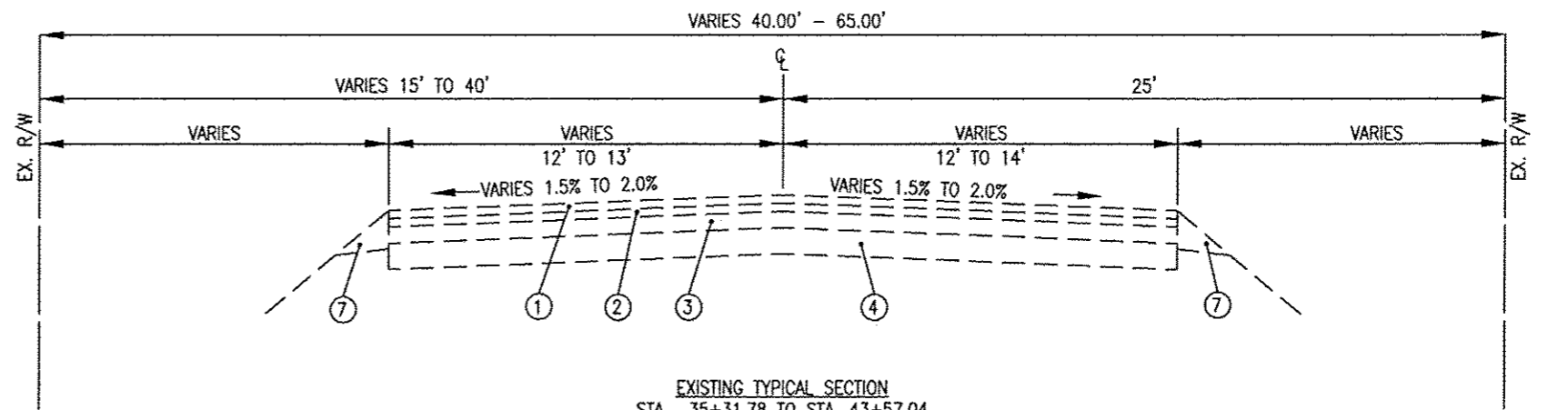
LEGEND	
①	EXISTING BITUMINOUS CONCRETE SURFACE COURSE, 2"
②	EXISTING BITUMINOUS CONCRETE BINDER COURSE, 1.5"
③	EXISTING LEVELING BINDER, VARIOUS THICKNESS
④	EXISTING BITUMINOUS CONCRETE BASE COURSE, VARIOUS THICKNESS
⑤	EXISTING B-6.24 CONCRETE CURB & GUTTER
⑥	EXISTING PCC SIDEWALK
⑦	EXISTING AGGGREGATE WEDGE



EXISTING TYPICAL SECTION  
STA. 14+41.49 TO STA. 16+53.64



EXISTING TYPICAL SECTION  
STA. 16+53.64 TO STA. 35+31.78  
\* (EX. SIDEWALK BEGINS AT 23+37.40 LT.)



EXISTING TYPICAL SECTION  
STA. 35+31.78 TO STA. 43+57.04

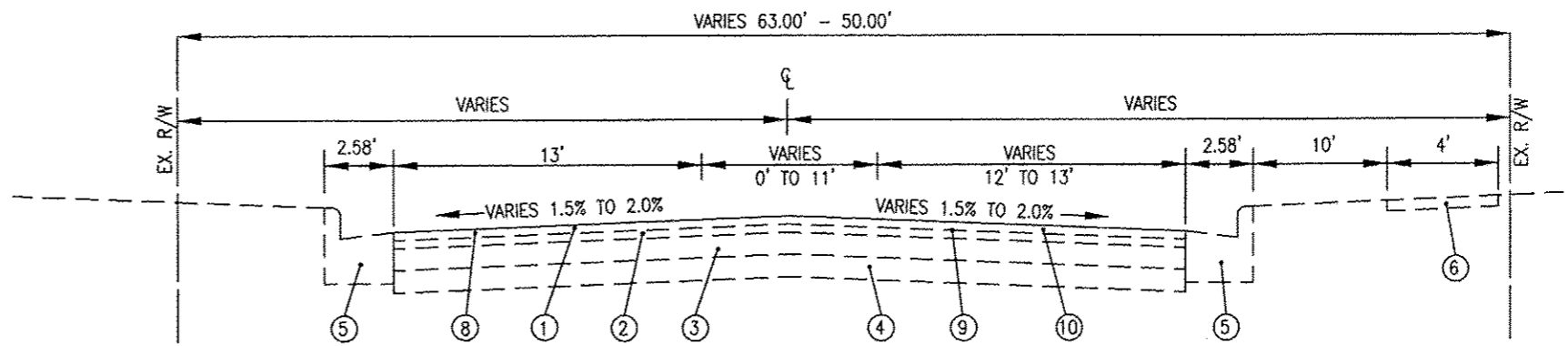
FILE NAME =	USER NAME = *USER*	DESIGNED -- JJV	REVISED --
*FILE#		DRAWN -- PDH	REVISED --
	PLOT SCALE = *SCALE*	CHECKED -- JJV	REVISED --
*MODELNAME*	PLOT DATE = *DATE*	DATE -- JUNE 2015	REVISED --

STATE OF ILLINOIS  
DEPARTMENT OF TRANSPORTATION

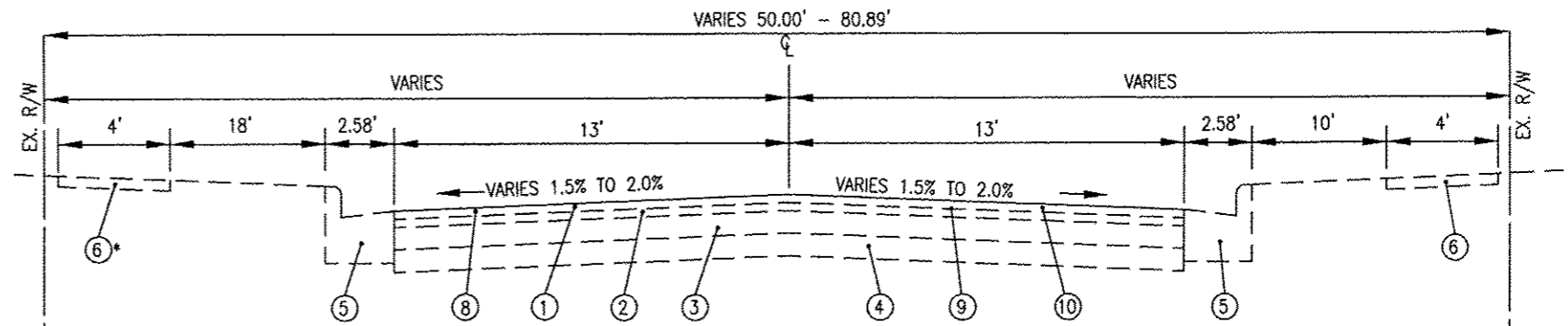
EXISTING TYPICAL SECTIONS  
F.A.U. 8898 - COTTONWOOD ROAD  
SCALE: N.T.S. SHEET 1 OF 1 SHEETS STA. 14+41.09 TO STA. 43+57.04

F.A.U. RTE. 8898	SECTION 14-00001-00-RS	COUNTY MADISON	TOTAL SHEETS 11	SHEET NO. 4
CONTRACT NO. 97611			ILLINOIS FED. AID PROJECT	

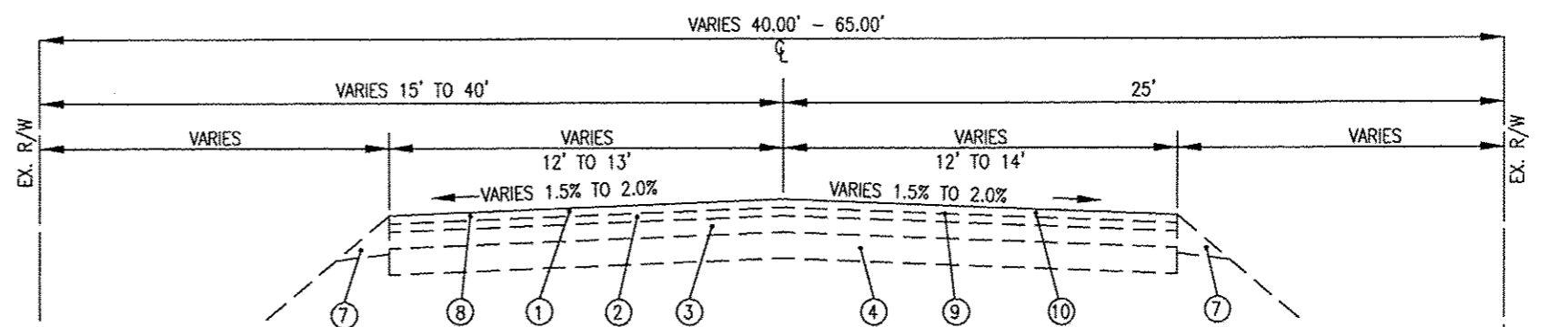
LEGEND	
①	EXISTING BITUMINOUS CONCRETE SURFACE COURSE, 2"
②	EXISTING BITUMINOUS CONCRETE BINDER COURSE, 1.5"
③	EXISTING LEVELING BINDER, VARIOUS THICKNESS
④	EXISTING BITUMINOUS CONCRETE BASE COURSE, VARIOUS THICKNESS
⑤	EXISTING B-6.24 CONCRETE CURB & GUTTER
⑥	EXISTING PCC SIDEWALK
⑦	EXISTING AGGREGATE WEDGE
⑧	PROPOSED HOT-MIX ASPHALT SURFACE COURSE, MIX 'D', N70, 1.5"
⑨	PROPOSED AREA REFLECTIVE CRACK CONTROL TREATMENT
⑩	PROPOSED HOT-MIX ASPHALT SURFACE REMOVAL, 1.5"



PROPOSED TYPICAL SECTION  
STA. 14+41.49 TO STA. 16+53.64



PROPOSED TYPICAL SECTION  
STA. 16+53.64 TO STA. 35+31.78  
\* (EX. SIDEWALK BEGINS AT 23+37.40 LT.)



PROPOSED TYPICAL SECTION  
STA. 35+31.78 TO STA. 43+57.04

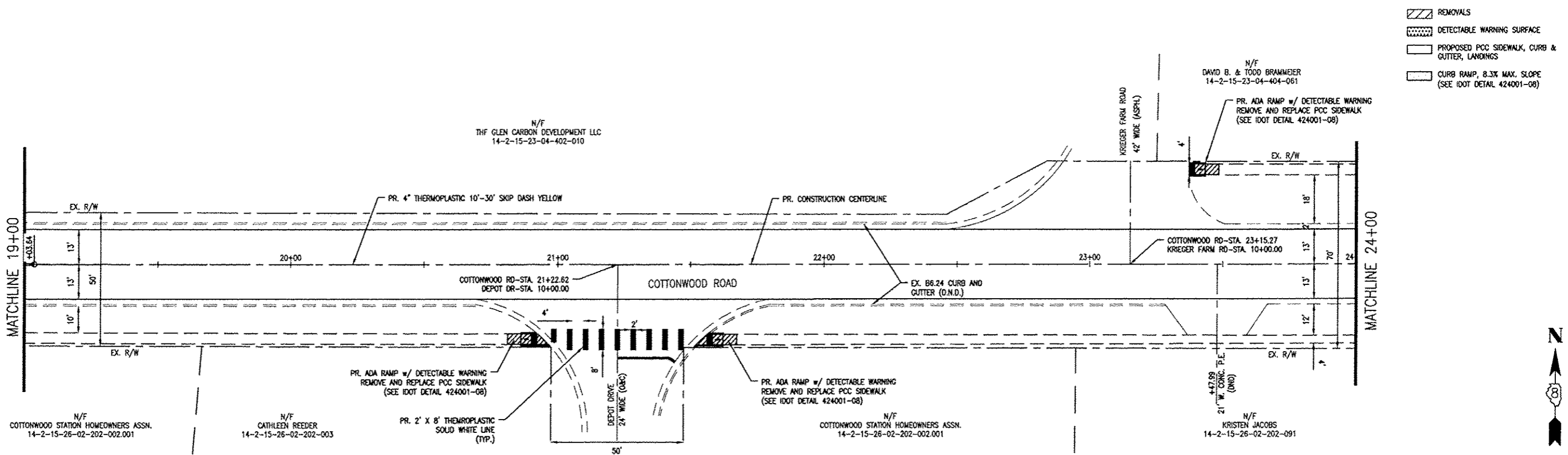
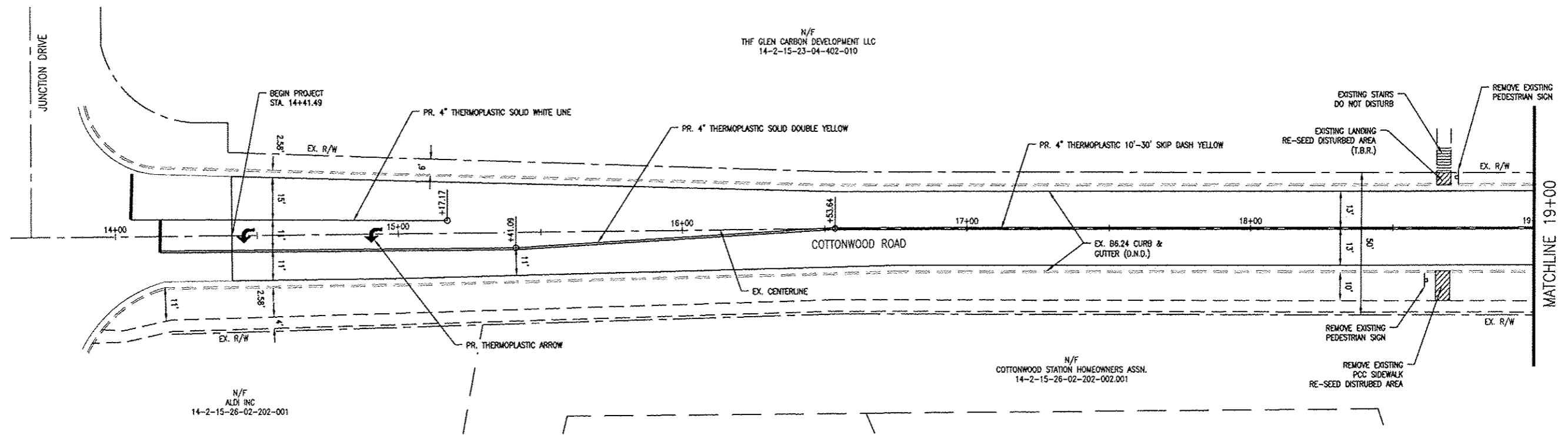
FILE NAME #	USER NAME * #USER#	DESIGNED - JJV	REVISED -	STATE OF ILLINOIS DEPARTMENT OF TRANSPORTATION	PROPOSED TYPICAL SECTIONS F.A.U. 8898 - COTTONWOOD ROAD	F.A.U. RTE.	SECTION	COUNTY	TOTAL SHEETS	SHEET NO.	
#FILE#		DRAWN - PDH	REVISED -			8898	14-00001-00-RS	MADISON	11	5	
#MODELNAME#		CHECKED - JJV	REVISED -			CONTRACT NO. 97611					
		DATE - JUNE 2015	REVISED -			ILLINOIS FED. AID PROJECT					
				SCALE: N.T.S. SHEET 1 OF 1 SHEETS		STA. 14+41.09 TO STA. 43+57.04					

PAVING SCHEDULE							
LOCATION		HOT-MIX ASPHALT SURFACE REMOVAL 1.5"	HOT-MIX ASPHALT SURFACE COURSE, MIX 'D', N70	AREA REFELCECTIVE CRACK CONTROL TREATMENT	TEMPORARY RAMP	PAVEMENT PATCHING, TYPE IV, 12 INCH	AGGREGATE WEDGE SHOULDER, TYPE B
		SQ YD	TON	SQ YD	SQ YD	TON	
14+41.09	TO 43+59.09	8,536	737	8,536	40		
40+70.35	TO 41+56.13					229	90
<b>TOTAL</b>		<b>8,536</b>	<b>737</b>	<b>8,536</b>	<b>40</b>	<b>229</b>	<b>90</b>

SIGN SCHEDULE			
STATION	OFFSET	W11-2 PED (30'X30')	W16-7P ARROW (24'X12')
		SQ. FT.	SQ. FT.
25+10.77	19.18' LT	6.25	
25+10.77	19.18' LT		2
25+02.38	18.54' RT	6.25	
25+02.38	18.54' RT		2
<b>SUB-TOTAL</b>		<b>12.50</b>	<b>4.00</b>
<b>TOTAL</b>		<b>16.50</b>	

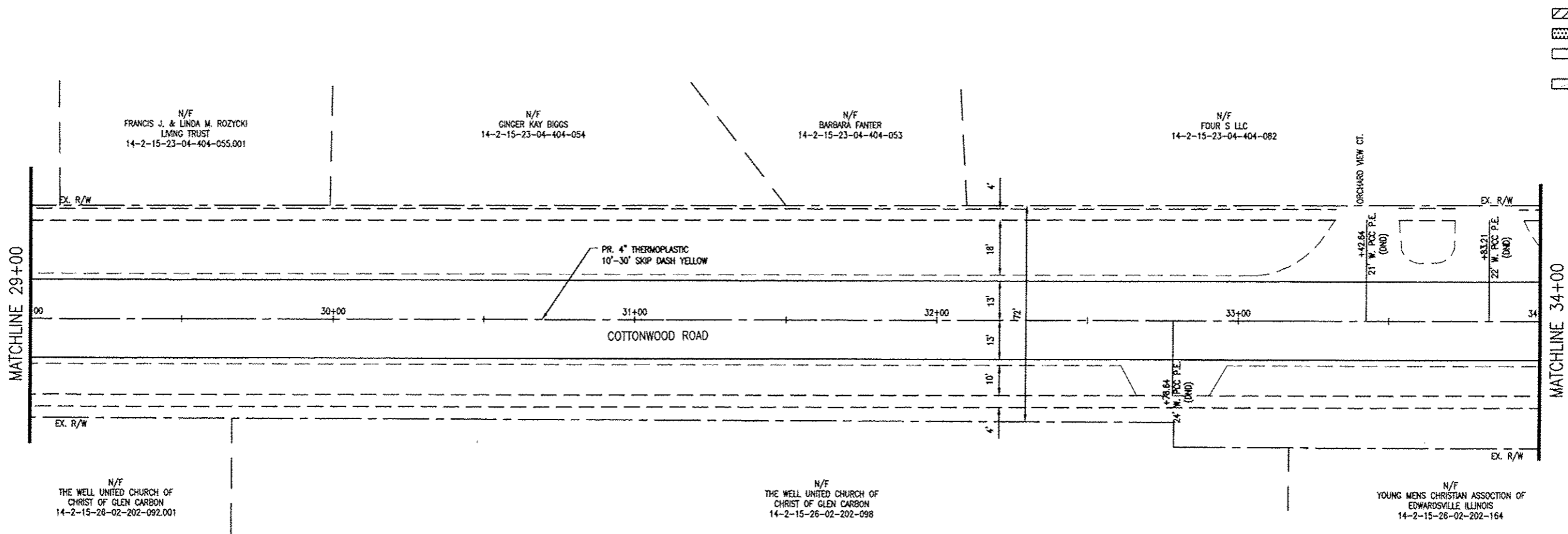
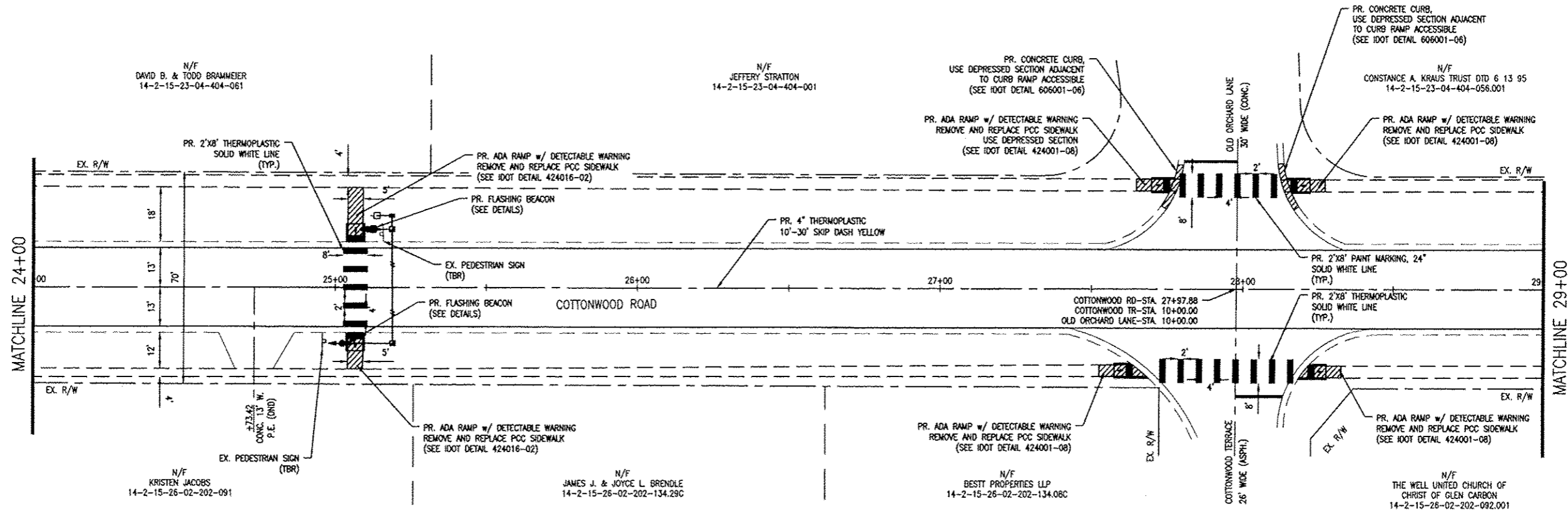
CURB & GUTTER, & SIDEWALK SCHEDULE						
STATION		COMBINATION CURB & GUTTER REMOVAL	COMB. CONC. CURB & GUTTER TYPE B8.12	SIDEWALK REMOVAL	PORTLAND CEMENT CONCRETE SIDEWALK, 4"	DETECTABLE WARNINGS
		FEET	FEET	SQ FT	SQ FT	SQ FT
18+65.19 RT	TO 18+70.10 RT			52.50		
18+65.40 LT	TO 18+70.40 LT			21.00		
20+81.13 RT	TO 20+97.06 RT			63.72	63.72	8
21+51.48 LT	TO 21+67.21 LT			62.62	62.62	8
23+37.40 LT	TO 23+48.41 LT			44.00	44.00	8
25+03.65 LT	TO 25+09.65 LT			25.00	20.00	10
25+03.69 RT	TO 25+09.69 RT			25.00	20.00	10
27+52.71 RT	TO 27+69.15 RT			63.56	63.56	8
27+64.70 LT	TO 27+77.46 LT	15.8	15.8	50.48	50.48	8
28+14.09 LT	TO 28+26.93 LT	16.3	16.3	50.84	50.84	8
28+18.86 RT	TO 28+32.74 RT			56.32	56.32	8
34+84.84 LT	TO 34+89.27 LT			25.00	25.00	10
34+86.63 RT	TO 34+91.63 RT			25.00	63.00	10
34+86.13 RT	TO 35+07.66 RT			82.36		
35+00.30 LT	TO 35+13.71 LT			52.60	52.60	8
35+59.57 LT	TO 35+80.38 LT			114.35	114.35	8
<b>TOTAL</b>		<b>32</b>	<b>32</b>	<b>815</b>	<b>687</b>	<b>112</b>

PAVEMENT MARKINGS											
STATION		DESCRIPTION	THERMOPLASTIC PAVEMENT MARKING - LINE 4" (DOUBLE SOLID YELLOW)	THERMOPLASTIC PAVEMENT MARKING - LINE 4" (SOLID WHITE)	THERMOPLASTIC PAVEMENT MARKING - LINE 4" (SKIP-DASH 10'30')	PAINT PAVEMENT MARKING - LINE 12" (SOLID WHITE)	PAINT PAVEMENT MARKING - LINE 24" (SOLID WHITE)	THERMOPLASTIC PAVEMENT MARKING - LINE 12" (SOLID WHITE)	THERMOPLASTIC PAVEMENT MARKING - LINE 12" (SOLID YELLOW)	THERMOPLASTIC PAVEMENT MARKING - LINE 24" (SOLID WHITE)	THERMOPLASTIC PAVEMENT MARKING - LETTERS AND SYMBOLS
			FEET	FEET	FEET			FEET	FEET	FEET	SQ. FT.
14+41.00	TO 19+03.64	CENTERLINE	925.28								
14+41.00	TO 15+17.17	LANE LINE		76.08							31.20
14+69.02		LEFT TURN ARROW									
19+03.64	TO 34+80.27	CENTERLINE			394.16						
21+03.06	TO 21+48.57	CROSSWALK								69.16	
21+22.54	TO 21+44.28	STOP BAR						22.00			
25+02.67	TO 25+02.67	CROSSWALK								40.00	
27+73.31	TO 28+12.31	CROSSWALK					48.00				
27+80.54	TO 27+97.97	STOP BAR				17.00					
27+83.45	TO 28+09.45	CROSSWALK								64.00	
27+97.80	TO 28+13.45	STOP BAR						15.00			
34+80.27		STOP BAR						13.00			
34+84.27		CROSSWALK								40.00	
35+18.63	TO 35+53.02	CROSSWALK								56.00	
35+18.63	TO 35+34.14	STOP BAR						13.00			
35+31.78	TO 35+54.53	STOP BAR						24.00			
35+45.75	TO 43+59.10	EDGE LINE WB		844.06							
35+79.26	TO 43+59.10	EDGE LINE EB		778.78							
35+94.07		STOP BAR						13.00			
35+94.07	TO 42+03.96	CENTERLINE			152.48						
42+03.96	TO 42+76.35	CENTERLINE	144.76								
42+76.35	TO 43+59.09	CENTERLINE EB	165.88						25.00		
42+76.35	TO 43+59.09	CENTERLINE WB	165.88								
<b>SUB-TOTAL:</b>			<b>1401.80</b>	<b>1698.92</b>	<b>546.64</b>	<b>17.00</b>	<b>48.00</b>	<b>100.00</b>	<b>25.00</b>	<b>269.16</b>	<b>31.20</b>
<b>TOTAL:</b>				<b>3647</b>		<b>17</b>	<b>48</b>	<b>100</b>	<b>25</b>	<b>269</b>	<b>31</b>



- REMOVALS
- DETECTABLE WARNING SURFACE
- PROPOSED PCC SIDEWALK, CURB & GUTTER, LANDINGS
- CURB RAMP, 8.3% MAX. SLOPE (SEE IDOT DETAIL 424001-08)

FILE NAME =	USER NAME = #USER#	DESIGNED -- JJV	REVISED --	<b>STATE OF ILLINOIS DEPARTMENT OF TRANSPORTATION</b>	<b>PLAN SHEET STA. 14+41.49 - STA. 24+00</b>			F.A.U. R.T.E.	SECTION	COUNTY	TOTAL SHEETS	SHEET NO.
#FILE#		DRAWN -- PDH	REVISED --		8898	14-00001-00-RS	MADISON	11	7			
#MODELNAME#		CHECKED -- JJV	REVISED --		SCALE: 1"=50'    SHEET 1 OF 3 SHEETS    STA. 14+41.49 TO STA. 24+00			CONTRACT NO. 97611				
		DATE -- JUNE 2015	REVISED --		ILLINOIS FED. AID PROJECT							



- REMOVALS
- DETECTABLE WARNING SURFACE
- PROPOSED PCC SIDEWALK, CURB & GUTTER, LANDINGS
- CURB RAMP, 8.3% MAX. SLOPE (SEE IDOT DETAIL 424001-08)

USER NAME = #USER#	DESIGNED - JJV	REVISED -
PLOT SCALE = #SCALE#	DRAWN - PDH	REVISED -
PLOT DATE = #DATE#	CHECKED - JJV	REVISED -
	DATE - JUNE 2015	REVISED -

STATE OF ILLINOIS  
DEPARTMENT OF TRANSPORTATION

PLAN SHEET  
STA. 24+00 - STA. 34+00  
SCALE: 1"=50' SHEET 2 OF 3 SHEETS STA. 24+00 TO STA. 34+00

F.A.U. RTE.	SECTION	COUNTY	TOTAL SHEETS	SHEET NO.
8898	14-00001-00-RS	MADISON	11	8
CONTRACT NO. 97611				

ILLINOIS FED. AID PROJECT

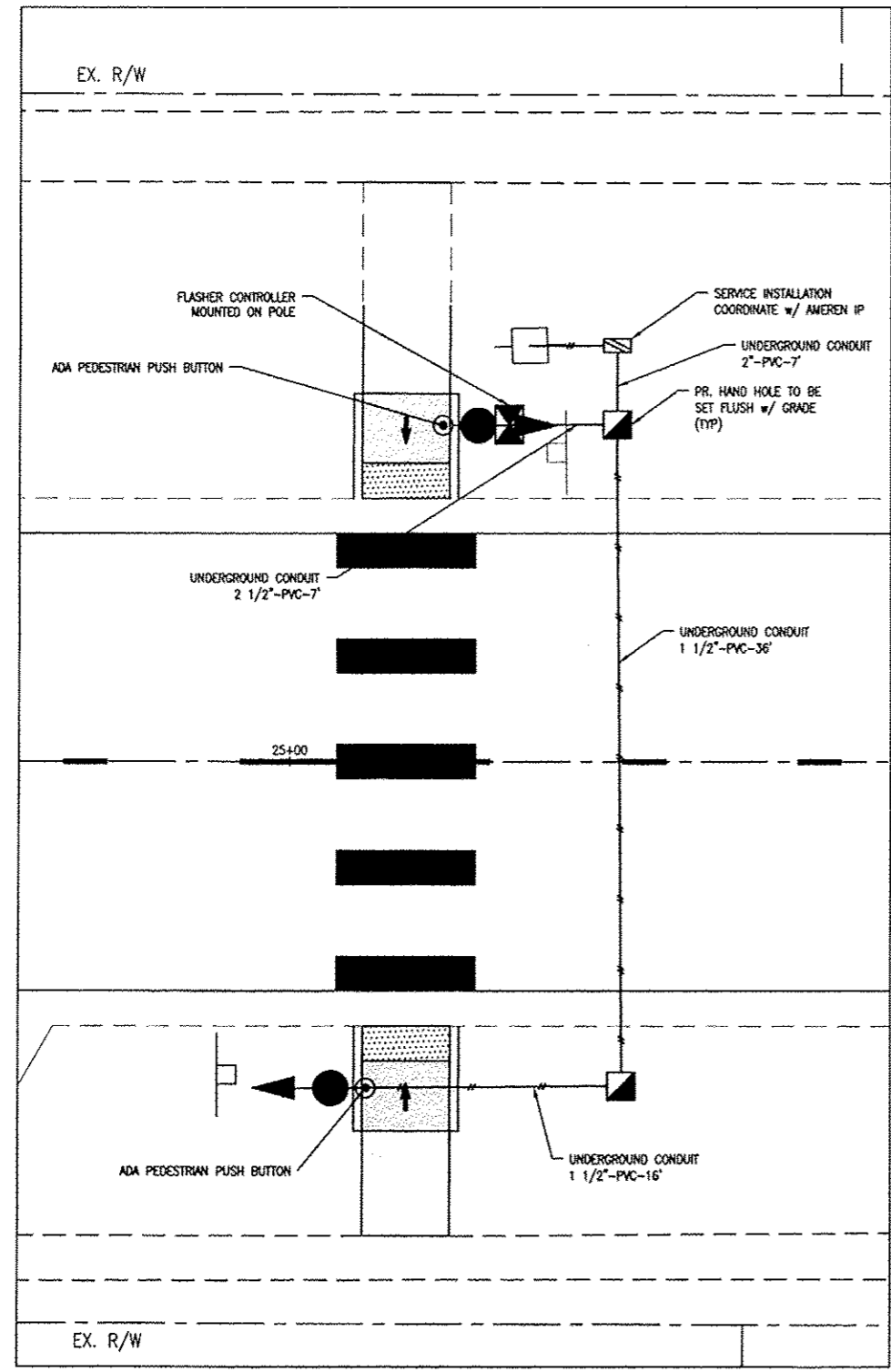




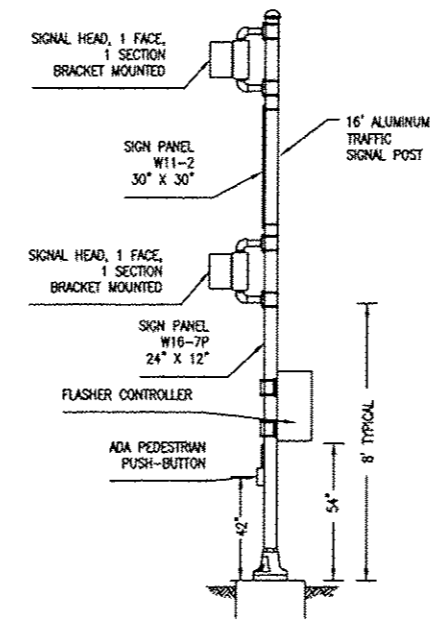
LEGEND

- PROPOSED FLASHING BEACON ON 16' POST (SEE DETAIL)
- PROPOSED FLASHER CONTROLLER, SPECIAL (SEE DETAIL)
- PROPOSED PEDESTRIAN PUSHBUTTON POST
- PROPOSED HANDHOLE
- PROPOSED UNDERGROUND PVC CONDUIT, SIZE SPECIFIED
- SERVICE INSTALLATION TYPE A, MODIFIED

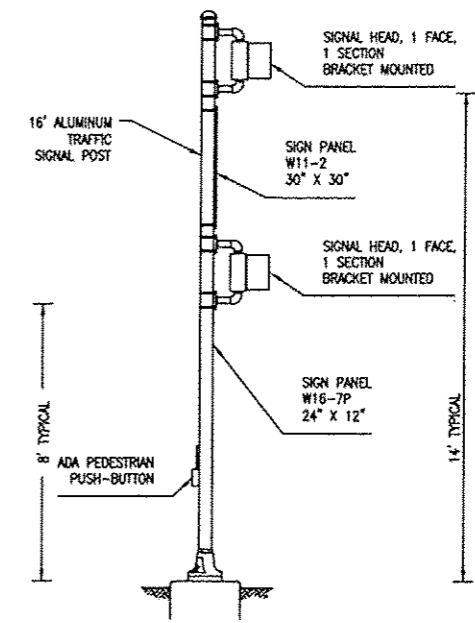
- 12" LED
- 12" LED
- STANDARDS
- 720001
- 814001
- 873001
- 878001
- 880006



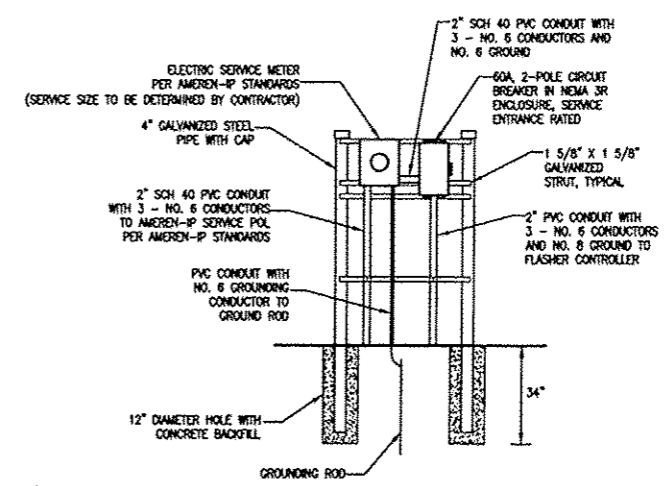
FLASHING BEACON PLAN



FLASHING BEACON DETAIL NORTH SIDE  
STA. 25+10.77 19.18' LT.



FLASHING BEACON DETAIL SOUTH SIDE  
STA. 25+02.38 18.54' RT



SERVICE INSTALLATION  
TYPE A, MODIFIED

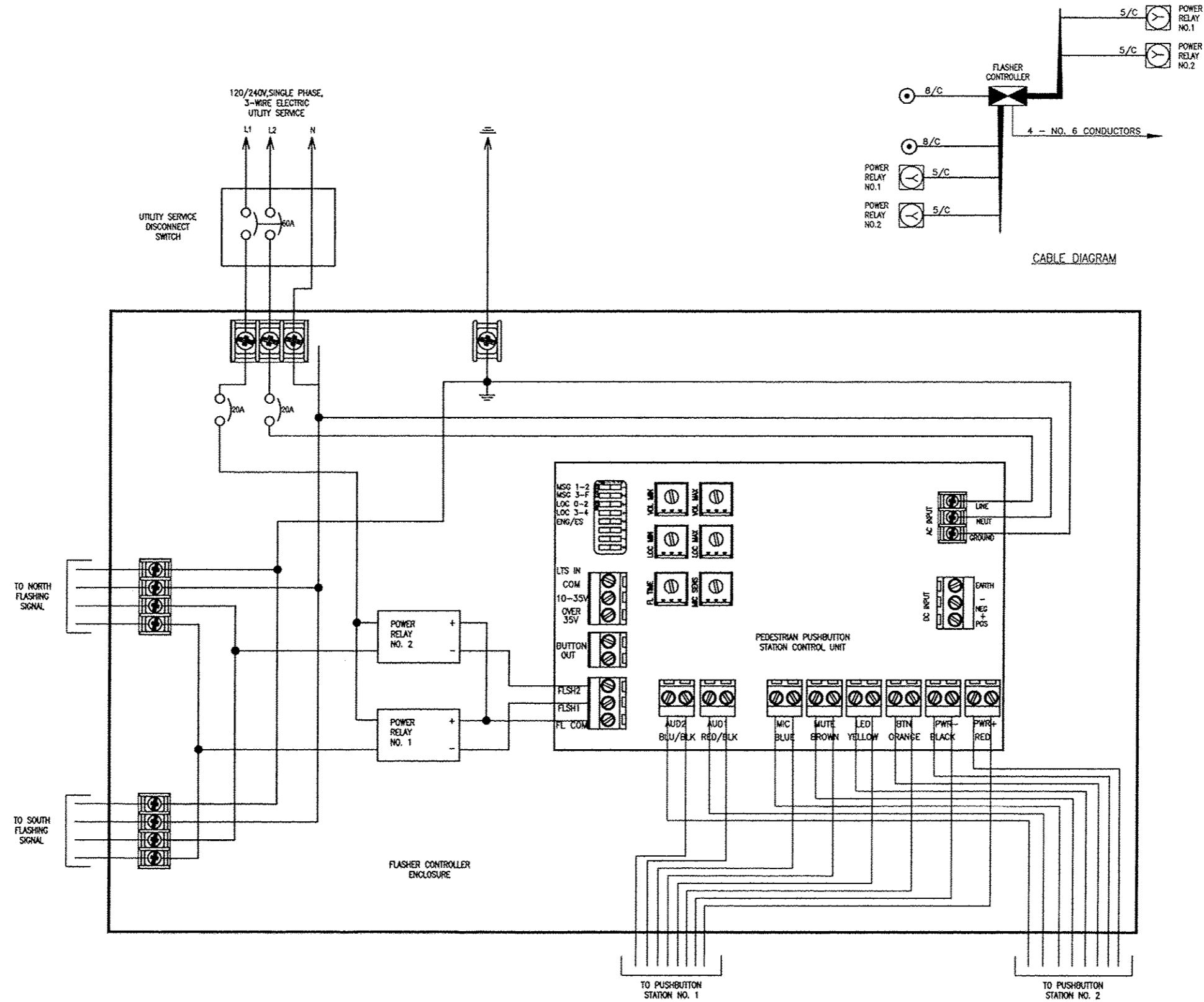
USER NAME = #USER#	DESIGNED -- JJV	REVISED --
	DRAWN -- PDH	REVISED --
PLOT SCALE = #SCALE#	CHECKED -- JJV	REVISED --
PLOT DATE = #DATE#	DATE -- JUNE 2015	REVISED --

STATE OF ILLINOIS  
DEPARTMENT OF TRANSPORTATION

FLASHING BEACON DETAIL  
F.A.U. 8898 - COTTONWOOD ROAD

SCALE: 1"=20' SHEET 1 OF 2 SHEETS STA. 34+00 TO STA. 43+57.04

F.A.U. RTE.	SECTION	COUNTY	TOTAL SHEETS	SHEET NO.
8898	14-00001-00-RS	MADISON	11	10
CONTRACT NO. 97611				
ILLINOIS FED. AID PROJECT				



FLASHER CONTROLLER WIRING DIAGRAM

USER NAME = #USER#	DESIGNED -- JJV	REVISED --
	DRAWN -- PDH	REVISED --
PLOT SCALE = #SCALE#	CHECKED -- JJV	REVISED --
PLOT DATE = #DATE#	DATE -- JUNE 2015	REVISED --

STATE OF ILLINOIS  
DEPARTMENT OF TRANSPORTATION

FLASHING BEACON DETAIL  
F.A.U. 8898 - COTTONWOOD ROAD  
SCALE: N.T.S. SHEET 2 OF 2 SHEETS STA. 34+00 TO STA. 43+57.04

F.A.U. RTE.	SECTION	COUNTY	TOTAL SHEETS	SHEET NO.
8898	14-00001-00-RS	MADISON	11	11
CONTRACT NO. 97611			ILLINOIS FED. AID PROJECT	