

# PLANS FOR PROPOSED

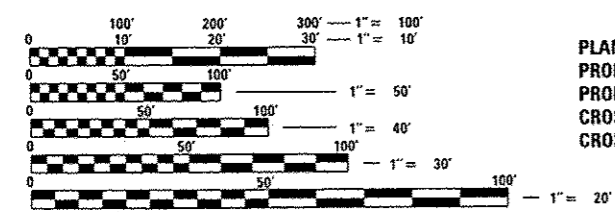
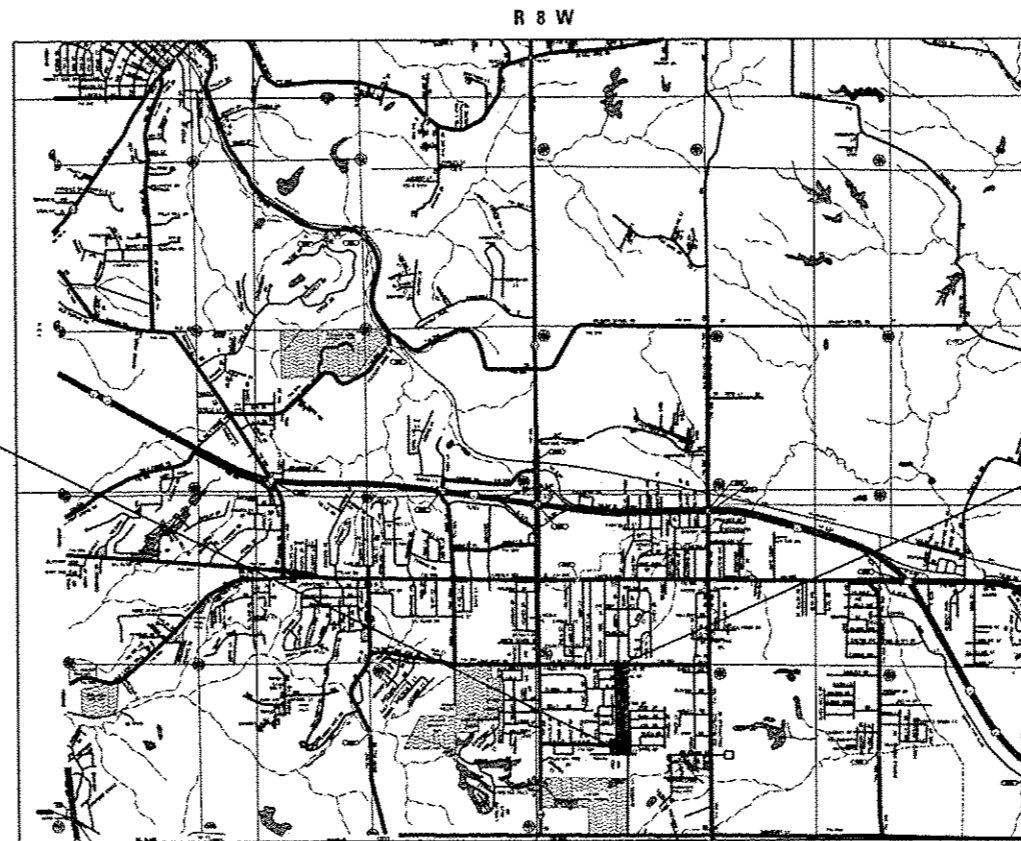
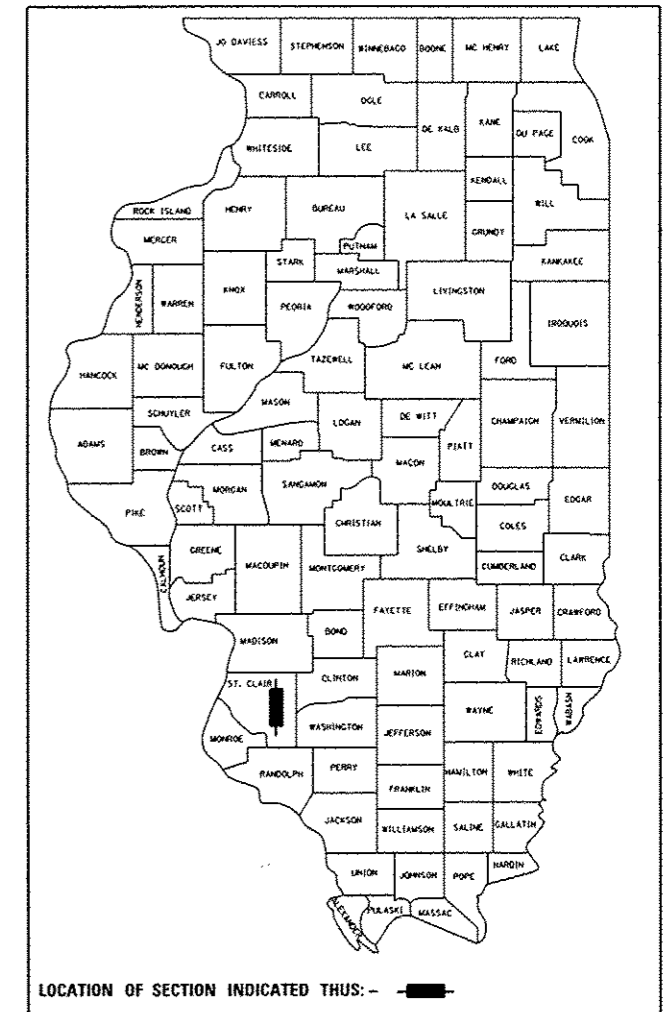
**CITY OF FAIRVIEW HEIGHTS  
 JOSEPH DRIVE RESURFACING  
 FAU ROUTE 9328  
 ST CLAIR COUNTY  
 SECTION: 12-00041-00-RS  
 PROJECT: CMM-5011 (390)  
 JOB NO.: C-98-364-12**

F.A.U. RTE.	SECTION	COUNTY	TOTAL SHEETS	SHEET NO.
9328	12-00041-00-RS	ST. CLAIR	24	1
FEDERAL AID PROJECT ILLINOIS		CONTRACT NO. 97613		

SHEET NO.	ITEM
1	COVER SHEET
2	GENERAL NOTES & COMMITMENTS
3-4	SUMMARY OF QUANTITIES
5	TYPICAL SECTIONS
6-7	SCHEDULES OF QUANTITIES
8-12	PLAN AND PROFILE SHEETS
13	TRAFFIC CONTROL PLAN
14-16	EROSION CONTROL, PAVEMENT MARKING, AND SIGNING SHEET
17	INTERSECTION DETAILS
18	CONSTRUCTION DETAILS
19-24	CROSS SECTIONS

**HIGHWAY STANDARDS**

- 000001-06 STANDARD SYMBOLS, ABBREVIATIONS AND PATTERNS
- 280001-07 TEMPORARY EROSION CONTROL SYSTEMS
- 406201-01 MAILBOX TURNOUT
- 424001-08 PERPENDICULAR CURB RAMPS FOR SIDEWALKS
- 424006-02 DIAGONAL CURB RAMPS FOR SIDEWALKS
- 424026-01 ENTRANCE /ALLEY PEDESTRIAN CROSSING
- 442201-03 CLASS C AND D PATCHES
- 606001-06 CONCRETE CURB TYPE B AND COMBINATION CONCRETE CURB AND GUTTER
- 701001-02 OFF-RD OPERATIONS, 2L, 2W, MORE THAN 15' (4.5 m) AWAY
- 701006-05 OFF-RD OPERATIONS, 2L, 2W 15' (4.5 m) TO 24' (600 mm) FROM PAVEMENT EDGE
- 701301-04 LANE CLOSURE, 2L, 2W, SHORT TIME OPERATIONS
- 701501-06 URBAN LANE CLOSURE, 2L, 2W, UNDIVIDED
- 701801-05 LANE CLOSURE MULTILANE 1W OR 2W CROSSWALK OR SIDEWALK CLOSURE
- 701901-04 TRAFFIC CONTROL DEVICES
- 720001-01 SIGN PANEL MOUNTING DETAILS
- 720006-04 SIGN PANEL ERECTION DETAILS
- 728001-01 TELESCOPING STEEL SIGN SUPPORT
- 731001-01 BASE FOR TELESCOPING STEEL SIGN SUPPORT
- 780001-05 TYPICAL PAVEMENT MARKINGS
- BLR21-9 TYPICAL APPLICATION OF TRAFFIC CONTROL DEVICES FOR CONSTRUCTION ON RURAL LOCAL HIGHWAYS
- BLR22-7 TYPICAL APPLICATION OF TRAFFIC CONTROL DEVICES FOR CONSTRUCTION ON RURAL LOCAL HIGHWAYS (TWO-LANE TWO WAY RURAL TRAFFIC) (ROAD CLOSED TO THRU TRAFFIC)



**SCALE IN FEET**  
 PLAN 1" = 20'  
 PROFILE HORIZ 1" = 20'  
 PROFILE VERT 1" = 5'  
 CROSS SECTION HORIZ 1" = 10'  
 CROSS SECTION VERT 1" = 5'

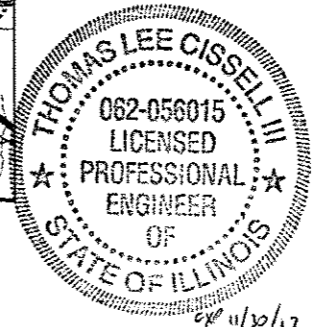
FULL SIZE PLANS HAVE BEEN PREPARED USING STANDARD ENGINEERING SCALES. REDUCED SIZED PLANS WILL NOT CONFORM TO STANDARD SCALES. IN MAKING MEASUREMENTS ON REDUCED PLANS, THE ABOVE SCALES MAY BE USED.

**J.U.L.I.E.**  
 JOINT UTILITY LOCATION INFORMATION FOR EXCAVATION  
 1-800-892-0123  
 OR 811

**DESIGN DESIGNATION**  
 ROADWAY CLASSIFICATION = MAJOR COLLECTOR  
 DESIGN SPEED = 30 MPH  
 CURRENT ADT = 2,950  
 DESIGN YEAR ADT (2032) = 3,350

**LOCATION MAP**

SCALE: 1" = 3,000'  
 GROSS LENGTH = 2,576.0' = (0.470 MILES)  
 NET LENGTH = 2,576.0' = (0.470 MILES)



THOMAS L. CISELL III  
 IL P.E. NO. 062-056015  
 EXPIRES: 11/30/2017  
 Date: 12/4/16

STATE OF ILLINOIS DEPARTMENT OF TRANSPORTATION DIVISION OF HIGHWAYS	
APPROVED <i>Mark T. Kupsky</i> 11-30-15	DATE
MARK T. KUPSKY MAYOR OF FAIRVIEW HEIGHTS	
PASSED <i>Justin</i> 1/2/16	DATE
DISTRICT 8 ENGINEER OF LOCAL ROADS & STREETS	
RELEASING FOR BID BASED ON LIMITED REVIEW	DATE
1/2/16	
DEPUTY DIRECTOR OF HIGHWAYS REGION FIVE ENGINEER	



COLLINGSVILLE 100 Lanier Court, Suite 1  
 Collinsville, IL 62234  
 tel 618.345.2200

BELLEVILLE 20 E. Main Street  
 Belleville, IL 62220  
 tel 618.416.4668

ST. LOUIS 720 Olive, Suite 1669  
 St. Louis, MO 63101  
 tel 314.588.8381

www.oatesassociates.com  
 ILLINOIS DESIGN FIRM LICENSE NO: 184.001115

**PRINTED BY THE AUTHORITY  
 OF THE STATE OF ILLINOIS**

**GENERAL NOTES**

**UTILITIES**

1. ABOVE-GROUND UTILITY FACILITIES OR APPURTENANCES SHALL BE RELOCATED OR ADJUSTED BY THEIR RESPECTIVE OWNERS TO PROVIDE A MINIMUM HORIZONTAL CLEARANCE OF 1.5 FEET, MEASURED FROM THE FACE OF CURB TO THE NEAR EDGE OF THE OBJECT.
2. THE FOLLOWING UTILITY COMPANIES MAY HAVE FACILITIES LOCATED WITHIN THE LIMITS OF CONSTRUCTION WHICH MAY REQUIRE ADJUSTMENT, RELOCATION OR REMOVAL. REFER TO THE "STATUS OF UTILITIES TO BE ADJUSTED" SPECIAL PROVISION FOR ADDITIONAL INFORMATION.

AMEREN ILLINOIS (ELECTRIC) 500 EAST BROADWAY EAST ST. LOUIS, IL 62202 (618) 482-2238	CASEYVILLE TOWNSHIP (SANITARY SEWER) 1 ECOLOGY DRIVE FAIRVIEW HEIGHTS, IL 62208 (618) 632-2414
---	---

CHARTER COMMUNICATIONS 815 CHARTER COMMONS TOWN & COUNTRY, MO 63017 (636) 387-6650	CITY OF FAIRVIEW HEIGHTS (SEWER) 10025 BUNKUM ROAD FAIRVIEW HEIGHTS, IL 62208 (618) 489-2020
---	---

CITY OF O'FALLON (WATER & SEWER) 255 SOUTH LINCOLN AVENUE O'FALLON, IL 62269 (618) 624-4500	AMEREN ILLINOIS (GAS & ELECTRIC) 1050 WEST BOULEVARD BELLEVILLE, IL 62221 (618) 530-0125
--	---

**GENERAL**

3. PRIOR TO CONSTRUCTION, THE CONTRACTOR SHALL CONTACT THE LOCAL POSTMASTER FOR APPROVAL OF ALL TEMPORARY MAILBOX LOCATIONS. THE COST OF ALL MATERIALS REQUIRED AND ALL LABOR NECESSARY TO COMPLY WITH THIS PROVISION WILL NOT BE PAID FOR SEPARATELY, BUT SHALL BE CONSIDERED AS INCLUDED IN THE UNIT BID PRICES OF THE CONTRACT. MAILBOXES TO BE PERMANENTLY RELOCATED WILL BE PAID FOR AT THE UNIT PRICE FOR RELOCATE EXISTING MAILBOX.
4. THE CONTRACTOR SHALL VERIFY ALL DIMENSIONS AND CONDITIONS IN THE FIELD PRIOR TO ORDERING MATERIALS AND COMMENCING CONSTRUCTION.
5. THE CONTRACTOR SHALL STAGE ALL WORK IN SUCH A WAY AS TO MAINTAIN INGRESS AND EGRESS TO ALL ABUTTING PROPERTIES AT ALL TIMES DURING CONSTRUCTION. AGGREGATE FOR TEMPORARY ACCESS WILL BE MEASURED FOR PAYMENT AS SPECIFIED IN THE CONTRACT. THE COST OF ALL OTHER MATERIALS REQUIRED AND ALL OTHER LABOR NECESSARY TO COMPLY WITH THIS PROVISION WILL NOT BE PAID FOR SEPARATELY, BUT SHALL BE CONSIDERED AS INCLUDED IN THE UNIT BID PRICES OF THE CONTRACT.
6. THE CONTRACTOR SHALL CONFINE ALL OPERATIONS TO THE CONSTRUCTION LIMITS LINE SHOWN ON THE PLANS. ANY AREA DISTURBED BEYOND THESE LIMITS SHALL BE RESTORED TO ITS ORIGINAL CONDITION AT THE CONTRACTOR'S EXPENSE.
7. THE CONTRACTOR SHALL FERTILIZE, SEED AND MULCH ALL EARTH SURFACES DISTURBED BY CONSTRUCTION. FERTILIZER, SEEDING AND MULCH WITHIN THE CONSTRUCTION LIMITS WILL BE PAID FOR AS PROVIDED IN THE CONTRACT. FERTILIZER, SEEDING AND MULCH OUTSIDE THESE LIMITS WILL NOT BE MEASURED FOR PAYMENT. SEE THE SEEDING SCHEDULE FOR ESTIMATED PLAN QUANTITIES.
8. IF ASH TREES ARE TO BE REMOVED FROM THE PROJECT, THE CONTRACTOR SHALL COMPLY WITH ALL REQUIREMENTS SPECIFIED BY THE ILLINOIS DEPARTMENT OF AGRICULTURE (IDOA) TO PREVENT THE SPREAD OF THE EMERALD ASH BORER. IDOA INFORMATION REGARDING ASH TREE REMOVAL CAN BE FOUND ON THE IDOA WEBSITE AT [WWW.AGR.STATE.IL.US/EAB](http://WWW.AGR.STATE.IL.US/EAB).
9. ALL EXISTING ROADWAY FEATURES INCLUDING, BUT NOT LIMITED TO, PAYEMENT, CURB, SIDEWALK, DRIVEWAY PAVEMENT, CULVERTS, HEADWALLS, RIPRAP, FENCING, RETAINING WALLS, WHICH INTERFERE WITH THE PROPOSED CONSTRUCTION SHALL BE REMOVED BY THE CONTRACTOR UNLESS NOTED OTHERWISE ON THE PLANS. ALL FEATURES WHICH ARE TO BE REMOVED AND FOR WHICH THERE IS NO SPECIFIC PAY ITEM, WILL NOT BE MEASURED SEPARATELY FOR PAYMENT AND THE COST OF THIS REMOVAL WORK SHALL BE CONSIDERED AS INCLUDED IN THE CONTRACT UNIT PRICE FOR THE VARIOUS RELATED PROPOSED ITEMS.

**ROADWAY ITEMS**

10. THE CONTRACTOR SHALL CONTACT THE ENGINEER DURING SUBGRADE PREPARATION AND PRIOR TO SOIL MODIFICATION TO DETERMINE THE NECESSITY OF THE PROPOSED SUBGRADE IMPROVEMENT. IF THE SUBGRADE IS FOUND NOT TO REQUIRE REMEDIAL PROCEDURES, THE SOIL MODIFICATION AND MODIFIER MAY BE DELETED.
11. THE CONTRACTOR SHALL NOTE THE LOCATION OF ALL MANHOLE AND VALVE COVER FRAMES AND LIDS LOCATED WITHIN RESURFACING LIMITS. APPROPRIATE CARE SHALL BE TAKEN TO PROTECT THESE ITEMS DURING MILLING OPERATIONS.

12. HIGH EARLY STRENGTH CONCRETE MIX SHALL BE USED FOR THE CONSTRUCTION OF PCC ENTRANCES AND SIDE ROADS. THE COST OF THIS WORK WILL NOT BE PAID FOR SEPARATELY, BUT SHALL BE CONSIDERED AS INCLUDED IN THE CONTRACT UNIT PRICE FOR THE VARIOUS PCC DRIVEWAY PAVEMENT ITEMS INCLUDED IN THE CONTRACT.
13. HIGH EARLY STRENGTH CONCRETE MIX SHALL BE USED FOR ALL PCC PATCHING. THE COST OF THIS WORK WILL NOT BE PAID FOR SEPARATELY, BUT SHALL BE CONSIDERED AS INCLUDED IN THE CONTRACT UNIT PRICE FOR THE VARIOUS PATCHING ITEMS INCLUDED IN THE CONTRACT
14. ALL PATCHING SHALL BE COMPLETED PRIOR TO HOT-MIX ASPHALT SURFACE REMOVAL.
15. AT VARIOUS LOCATIONS, IT MAY BE NECESSARY TO TRANSITION PROPOSED COMBINATION CONCRETE CURB AND GUTTER TO MEET EXISTING CURBS OR GUTTERS. THE MINIMUM LENGTH OF TRANSITIONAL COMBINATION CURB AND GUTTER SHALL BE 10 FEET, UNLESS DIRECTED OTHERWISE BY THE ENGINEER.
16. STORM SEWERS AND CULVERTS MAY HAVE MINIMAL DEPTH BELOW THE MODIFIED SOIL LAYER. THE CONTRACTOR SHALL TAKE WHATEVER PRECAUTIONS ARE NECESSARY TO PROTECT THE PIPES FROM DAMAGE DURING THE SOIL MODIFICATION PROCESS. IN THE EVENT THAT PIPES ARE DAMAGED, THEY SHALL BE REPAIRED OR REPLACED TO THE SATISFACTION OF THE ENGINEER. ALL COSTS INCURRED TO REPAIR OR REPLACE DAMAGED PIPES SHALL BE AT THE CONTRACTOR'S EXPENSE.
17. THE PAVEMENT MARKING LOCATIONS SHOWN IN THE PLANS ARE APPROXIMATE. PROPOSED CROSSWALKS AND STOP BARS SHALL BE ADJUSTED AS DIRECTED BY THE ENGINEER, IF NECESSARY, TO MATCH FIELD CONDITIONS.

**APPROXIMATE QUANTITIES, SYMBOLS & ABBREVIATIONS**

18. THE FOLLOWING ITEMS AND APPROXIMATE QUANTITIES ARE INCLUDED IN THE "SUMMARY OF QUANTITIES" IN ORDER TO ESTABLISH A UNIT COST FOR WORK WHICH MAY BE REQUIRED TO CONSTRUCT THIS SECTION. THE ACTUAL QUANTITY OF EACH ITEM SHALL BE DETERMINED BY THE ENGINEER IN THE FIELD.

PIPE DRAINS, 4"	50	FOOT
AGGREGATE FOR TEMPORARY ACCESS	100	TON
AGGREGATE BASE COURSE TYPE B	500	TON
WATER VALVES TO BE ADJUSTED	10	EACH
JOINT OR CRACK FILLING, SPECIAL	800	FOOT


19. THE FOLLOWING SYMBOLS, ABBREVIATIONS AND PATTERNS SUPPLEMENT OR SUPERCEDE HIGHWAY STANDARD 000001:

BO	BY OTHERS (USED IN CONJUNCTION WITH TBA & TBR)
CONSTR	CONSTRUCTION
CP	CONTROL POINT
ESMT	EASEMENT
ELEV	ELEVATION
K	LENGTH OF VERTICAL CURVE PER PERCENT GRADE DIFFERENCE
N/F	NOW OR FORMERLY
O/C	OIL AND CHIP
PERM	PERMANENT
PVI	POINT OF VERTICAL INTERSECTION
PVC	POLYVINYL CHLORIDE PIPE
TCE	TEMPORARY CONSTRUCTION EASEMENT
TUP	TEMPORARY USE PERMIT
TBA	TO BE ADJUSTED
TBRL	TO BE RELOCATED
TYP	TYPICAL
W	WIDTH

**COMMITMENTS**

NONE

FILE NAME: H:\P\12019\Highway\Station\Sheet\0812019-Int-Gen-Notes.dgn

 <b>DATES ASSOCIATES</b> Engineering • Architecture ILLINOIS DESIGN FIRM LICENSE NO: 181.001115	USER NAME = bricen.hall	DESIGNED -	REVISED -	<b>STATE OF ILLINOIS</b> <b>DEPARTMENT OF TRANSPORTATION</b>	<b>GENERAL NOTES, UTILITIES, &amp; COMMITMENTS</b>	F.A.L. RTE.	SECTION	COUNTY	TOTAL SHEETS	SHEET NO.
	PLOT SCALE = 48,0000' / 1" =	DRAWN -	REVISED -			9328	12-0041-00-R5	ST. CLAIR	24	2
PLOT DATE = 12/4/2015	CHECKED -	REVISED -		SCALE: SHEET 1 OF 1 SHEETS STA. TO STA.		JOSEPH DR RESURFACING		CONTRACT NO. 97613		
	DATE -	REVISED -		ILLINOIS FED. AID PROJECT						

SI	SP	CODE NO.	ITEM	UNIT	TOTAL QUANTITY
		• 20201200	REMOVAL AND DISPOSAL OF UNSUITABLE MATERIAL	CU YD	9
		• 25200110	SODDING, SALT TOLERANT	SO YD	252
		28000250	TEMPORARY EROSION CONTROL SEEDING	POUND	20
		28000500	INLET AND PIPE PROTECTION	EACH	10
		31102712	SUBBASE GRANULAR MATERIAL, TYPE C 12"	SO YD	28
		• 35101400	AGGREGATE BASE COURSE, TYPE B	TON	500
*		• 35200420	PROCESSING SOIL-CEMENT BASE COURSE 12"	SO YD	4,055
*		35200500	CEMENT	100 WT	4,146
		40201000	AGGREGATE FOR TEMPORARY ACCESS	TON	100
		40600275	BITUMINOUS MATERIALS (PRIME COAT)	POUND	4,438
		40600990	TEMPORARY RAMP	SO YD	307
		40603315	HOT-MIX ASPHALT SURFACE COURSE, MIX "C", N70	TON	1,331
		• 40800050	INCIDENTAL HOT-MIX ASPHALT SURFACING	TON	50
		42300200	PORTLAND CEMENT CONCRETE DRIVEWAY PAVEMENT, 6 INCH	SO YD	86

SI	SP	CODE NO.	ITEM	UNIT	TOTAL QUANTITY
		• 42400100	PORTLAND CEMENT CONCRETE SIDEWALK 4 INCH	SO FT	869
		• 42400300	PORTLAND CEMENT CONCRETE SIDEWALK 6 INCH	SO FT	440
		• 42400800	DETECTABLE WARNINGS	SO FT	88
		• 44000100	PAVEMENT REMOVAL	SO YD	4,055
		44000157	HOT-MIX ASPHALT SURFACE REMOVAL, 2"	SO YD	3,779
		• 44000200	DRIVEWAY PAVEMENT REMOVAL	SO YD	212
		44000400	GUTTER REMOVAL	FOOT	514
		• 44000600	SIDEWALK REMOVAL	SO FT	1,228
		44201341	CLASS C PATCHES, TYPE II, 9 INCH	SO YD	9
		44201345	CLASS C PATCHES, TYPE III, 9 INCH	SO YD	19
		56109210	WATER VALVES TO BE ADJUSTED	EACH	10
		60100905	PIPE DRAINS, 4"	FOOT	50
		• 60255500	MANHOLES TO BE ADJUSTED	EACH	10
		67100100	MOBILIZATION	L SUM	1

NOTES: SP - SEE PROJECT SPECIFIC SPECIAL PROVISIONS  
SI - SPECIALTY ITEM

FILE NAME: H:\V\12819\Interstation\Sheets\0812819.plt-500.dgn



USER NAME = brianherl  
 PLOT SCALE = 1/80,000 = 1" = 100'  
 PLOT DATE = 12/4/2015

DESIGNED -  
 DRAWN -  
 CHECKED -  
 DATE -

REVISED -  
 REVISED -  
 REVISED -  
 REVISED -

**STATE OF ILLINOIS  
 DEPARTMENT OF TRANSPORTATION**

**SUMMARY OF QUANTITIES**

SCALE: NTS SHEET 1 OF 2 SHEETS STA. TO STA.

F.A.U. RTE.	SECTION	COUNTY	TOTAL SHEETS	SHEET NO.
9328	12-00041-00-R5	ST. CLAIR	24	3
JOSEPH DR RESURFACING			CONTRACT NO. 9T613	
ILLINOIS FED. AID PROJECT				

SI	SP	CODE NO.	ITEM	UNIT	TOTAL QUANTITY
		70300210	TEMPORARY PAVEMENT MARKING LETTERS AND SYMBOLS	SO FT	38
		70300260	TEMPORARY PAVEMENT MARKING - LINE 12"	FOOT	566
		70300280	TEMPORARY PAVEMENT MARKING - LINE 24"	FOOT	97
		70301000	WORK ZONE PAVEMENT MARKING REMOVAL	SO FT	798
		72000100	SIGN PANEL - TYPE 1	SO FT	46.7
		72400310	REMOVE SIGN PANEL - TYPE 1	SO FT	5.0
		72800100	TELESCOPING STEEL SIGN SUPPORT	FOOT	236.5
		• 78000100	THERMOPLASTIC PAVEMENT MARKING - LETTERS AND SYMBOLS	SO FT	38
		• 78000600	THERMOPLASTIC PAVEMENT MARKING - LINE 12"	FOOT	566
		• 78000650	THERMOPLASTIC PAVEMENT MARKING - LINE 24"	FOOT	97
		Z0013798	CONSTRUCTION LAYOUT	L SUM	1
		• X0327301	RELOCATE EXISTING MAILBOX	EACH	4
		• X4520005	JOINT OR CRACK FILLING, SPECIAL	FOOT	800
		• X6062400	CONCRETE GUTTER (SPECIAL)	FOOT	514

SI	SP	CODE NO.	ITEM	UNIT	TOTAL QUANTITY
		• X7010216	TRAFFIC CONTROL AND PROTECTION, (SPECIAL)	L SUM	1

NOTES: SP - SEE PROJECT SPECIFIC SPECIAL PROVISIONS  
SI - SPECIALTY ITEM

FILE NAME = H:\P\1219\Highway\Station\Sheets\0812015.plt-500.dgn



USER NAME = brien.heil  
DESIGNED -  
DRAWN -  
PLOT SCALE = 100.0000' / 1"  
CHECKED -  
PLOT DATE = 12/4/2015

DESIGNED -  
REVISIONS -  
CHECKED -  
DATE -

REVISED -  
REVISED -  
REVISED -  
REVISED -

**STATE OF ILLINOIS  
DEPARTMENT OF TRANSPORTATION**

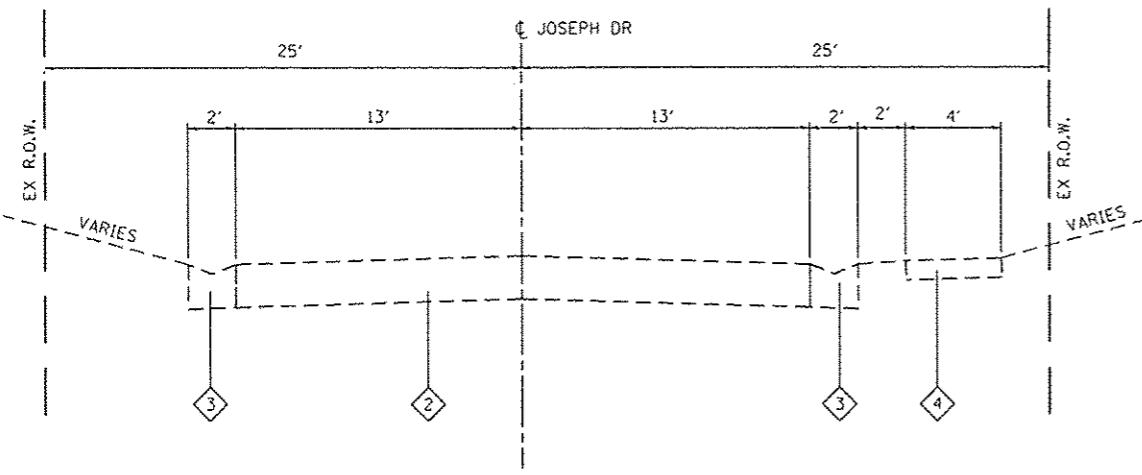
**SUMMARY OF QUANTITIES**

SCALE: NTS    SHEET 1 OF 2 SHEETS    STA.    TO STA.

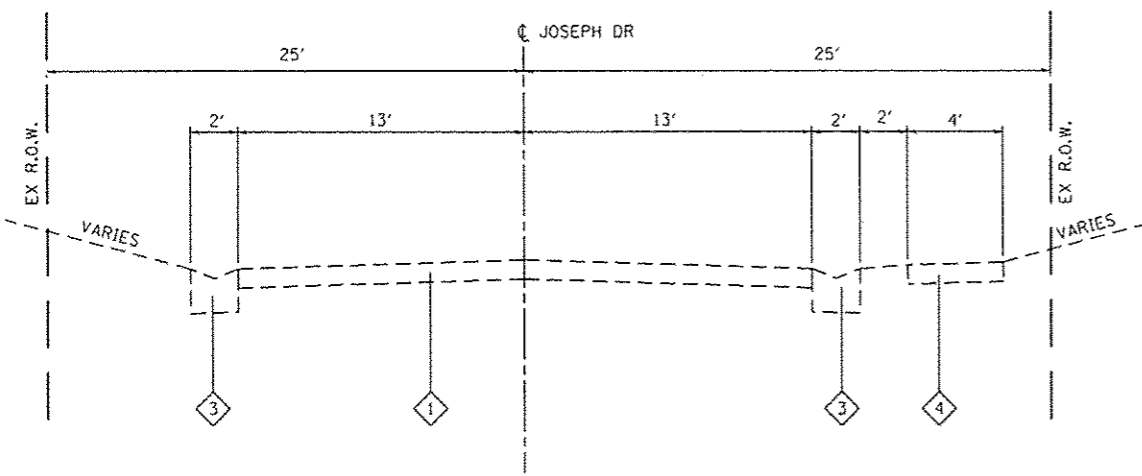
F.A.U. RTE.	SECTION	COUNTY	TOTAL SHEETS	SHEET NO.
9328	12-00041-00-RS	ST. CLAIR	24	4
JOSEPH DR RESURFACING			CONTRACT NO. 97613	
ILLINOIS FED. AID PROJECT				

STRUCTURAL DESIGN TRAFFIC:	YEAR:	2032
PV = 2,981	SU = 335	MU = 34
ROAD/STREET CLASSIFICATION:	CLASS:	II
PERCENT OF STRUCTURAL DESIGN TRAFFIC IN DESIGN LANE:		
P = 89%	S = 10%	M = 1%
TRAFFIC FACTOR:	ACTUAL =	0.29
	MIN =	XX
PG GRADE:	BINDER:	PG 64-22
	SURFACE:	PG 64-22
STRUCTURAL SUPPORT RATING:		
SSR =	POOR	

MIXTURE USE	SURFACE
THICKNESS	2"
AC/PG	PG 64-22
RAP % (MAX)	BDE SPECS
DESIGN AIR VOIDS	4.0% @ Ndes=70
MIX COMPOSITION	IL-9.5
FRICTION AGG	MIXTURE "C"
DENSITY TEST METHOD	NUCLEAR GAUGE



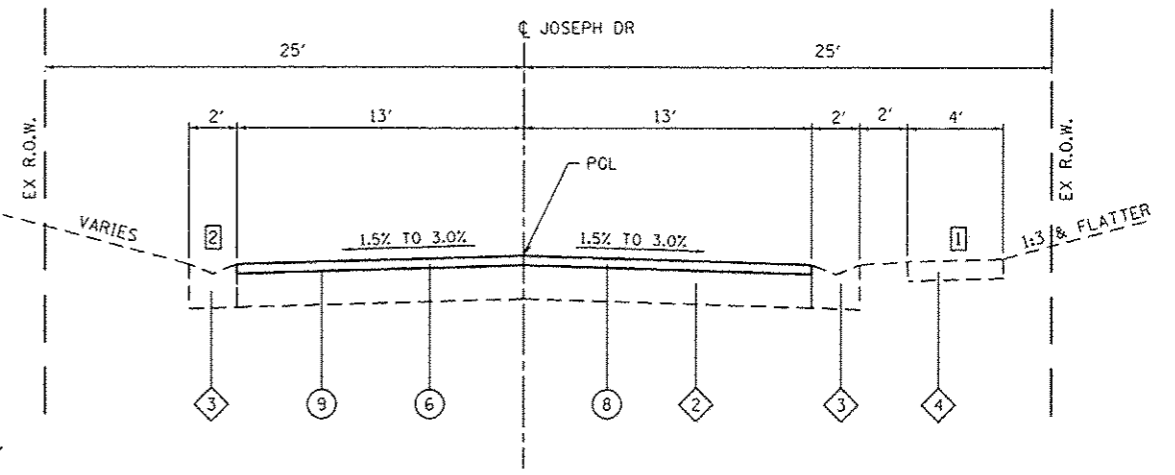
**EXISTING JOSEPH DRIVE**  
STA 23+15 TO STA 34+74



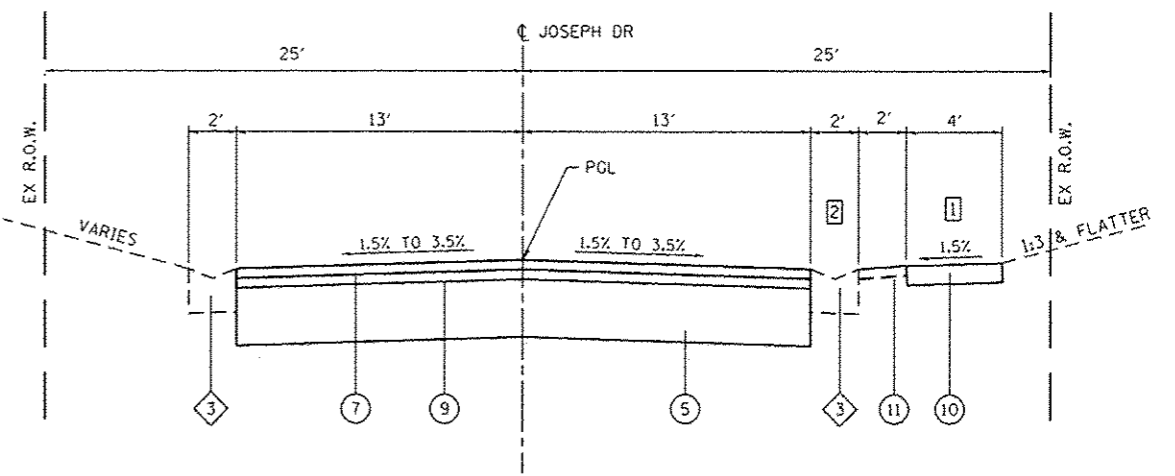
**EXISTING JOSEPH DRIVE**  
STA 9+95 TO STA 23+15

- TYPICAL SECTION LEGEND**
- 1 EXISTING ASPHALT PAVEMENT, 4"
  - 2 EXISTING ASPHALT PAVEMENT, 9"
  - 3 EXISTING PCC GUTTER
  - 4 EXISTING PCC SIDEWALK
  - 5 PROPOSED CEMENT MODIFIED SUBBASE, 12"
  - 6 PROPOSED HOT-MIX ASPHALT SURFACE REMOVAL, 2"
  - 7 PROPOSED HOT-MIX ASPHALT SURFACE COURSE, 4" (TO BE PLACED IN 2 EQUAL 2" LIFTS)
  - 8 PROPOSED HOT-MIX ASPHALT SURFACE COURSE, 2"
  - 9 BIT MATERIALS PRIME COAT
  - 10 PROPOSED PCC SIDEWALK (AS INDICATED BELOW)
  - 11 PROPOSED SODDING, SALT TOLERANT (ONLY ALONG SIDEWALK OR CURB REPLACEMENT)

- TYPICAL SECTION NOTES**
- 1 SEE PLAN SHEETS FOR EXACT LOCATIONS OF SIDEWALK RECONSTRUCTION  
STA 9+00 TO STA 10+40  
STA 13+15 TO STA 14+15  
STA 18+65 TO STA 19+20  
STA 20+50 TO STA 21+65  
STA 22+20 TO STA 22+65  
STA 27+15 TO STA 28+25
  - 2 SEE PLAN SHEETS FOR EXACT LOCATIONS OF CURB RECONSTRUCTION  
STA 11+25 TO STA 11+90  
STA 16+70 TO STA 17+50  
STA 24+70 TO STA 26+30  
10' AT ALL SIDEWALK RAMPS



**PROPOSED JOSEPH DRIVE**  
STA 23+15 TO STA 34+74



**PROPOSED JOSEPH DRIVE**  
STA 9+95 TO STA 23+15

FILE NAME: H:\V\12019\Highway\Station\Sheet\0812819-INT-Topical.dgn



USER NAME: brian.heil	DESIGNED: -	REVISED: -
PLOT SCALE: 1/8" = 1'-0"	DRAWN: -	REVISED: -
PLOT DATE: 12/4/2015	CHECKED: -	REVISED: -
	DATE: -	REVISED: -

STATE OF ILLINOIS  
DEPARTMENT OF TRANSPORTATION

TYPICAL SECTIONS	
SCALE: NTS	SHEET 1 OF 1 SHEETS
STA. TO STA.	

F.A.U. RTE. 9328	SECTION 12-00041-00-RS	COUNTY ST. CLAIR	TOTAL SHEETS 24	SHEET NO. 5
JOSEPH DR RESURFACING		CONTRACT NO. 97613		
ILLINOIS FED. AID PROJECT				

**CURB & GUTTER**

STATION	STATION	OFFSET	GUTTER REM (FOOT)	CONC GUTTER SP (FOOT)
9+05	10+00	RT	48	48
11+25	12+00	RT	75	75
13+25	14+12	RT	43	43
16+65	17+50	RT	85	85
24+75	26+30	LT	157	157
27+40	28+20	RT	61	61
27+40	28+20	LT	45	45
<b>TOTAL</b>			<b>514</b>	<b>514</b>

**CURB NOTES:**

- ALL CURB REMOVAL ADJACENT TO EXISTING PAVEMENT TO REMAIN SHALL BE SAW CUT ALONG THE EXISTING PAVEMENT

**SIDEWALK AND SOD**

STATION	STATION	OFFSET	SODDING SALT TOLERANT (SY YD)	TEMP EROS CONTR SEED (NOTE 2) (POUND)	PC CONC SIDEWALK 4 (SO FT)	PC CONC SIDEWALK 6 (NOTE 1) (SO FT)	DETECTABLE WARNINGS (NOTE 1) (SO FT)	SIDEWALK REM (SO FT)
8+98	10+40	RT	58	4	192	117	30	328
13+16	14+13	RT	19	4	32	115	26	120
18+66	19+21	RT	20		98			98
20+53	21+63	RT	48	4	261			301
22+18	22+64	RT	13		97			72
24+43	24+55	RT	9		38			37
26+34	26+42	RT			23			23
27+17	28+23	RT	42	4	128	115	16	249
27+45	28+13	LT	43	4		93	16	
<b>TOTAL</b>			<b>252</b>	<b>20</b>	<b>869</b>	<b>440</b>	<b>88</b>	<b>1,228</b>

**SIDEWALK NOTES:**

- SIDEWALK RAMPS ACCESSIBLE TO THE DISABLED ARE REQUIRED. SEE PLAN SHEETS FOR LOCATIONS AND TYPES.
- APPLICATION RATES USED FOR QUANTITY ESTIMATES ARE AS FOLLOWS:  
TEMPORARY EROSION CONTROL SEEDING : 100 LBS/ACRE

**PAVEMENT**

STATION	STATION	PROCESS PROC SOIL CEM BC 12 (SO YD)	CEMENT (NOTE 3) (100 WT)	BIT MATLS PR CT (NOTE 1) (LB)	TEMPORARY RAMP (SO YD)	HMA 5C "C" N70 (NOTE 1) (NOTE 2) (TON)	PAVEMENT REM (SO YD)	HMA SURF REM 2" (SO YD)
<b>JOSEPH DRIVE</b>								
9+95	23+15	3,816	3,902	2,576	19	854	3,816	
23+15	34+74			1,510	19	376		3,355
<b>SIDE ROADS</b>								
FORDHAM		239	245	161	19	54	239	
ORLEANS					50			
ELVIRA				191	100	47		424
WENDELL					50			
KADLEC					50			
<b>TOTAL</b>		<b>4,055</b>	<b>4,146</b>	<b>4,438</b>	<b>307</b>	<b>1,331</b>	<b>4,055</b>	<b>3,779</b>

**PAVEMENT NOTES:**

- APPLICATION RATES USED FOR QUANTITY ESTIMATES ARE AS FOLLOWS:  
HOT-MIX ASPHALT: 112 LBS / SY / INCH THICKNESS  
BITUMINOUS MATERIAL (PRIME COAT): 0.05 LBS / SF
- STATION 9+95 TO 23+15 AND FORDHAM WILL HAVE 2 EQUAL LIFTS OF 2".
- FOR ESTIMATING PURPOSES, DENSITY OF SOIL IS 119.6 LB/CU FT WITH 10% CEMENT ADDED. ACTUAL MIX PROPORTIONS WILL BE DETERMINED BY THE ENGINEER PRIOR TO CONSTRUCTION.

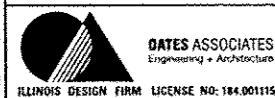
**ENTRANCE**

STATION	OFFSET	ENTRANCE TYPE	ENTRANCE WIDTH "W" (NOTE 1) (FOOT)	EXISTING SURFACE TYPE	INCIDENTAL HMA SURF (TON)	PCC DRIVEWAY PAVT 6 (NOTE 2) (SO YD)	DRIVEWAY PAVEMENT REM (SO YD)
10+31.5	RT	PE	12	CONC		16	10
18+94.5	RT	PE	26.5	HMA	3	21	27
20+68	RT	PE	12	HMA	2	12	10
21+29	RT	PE	12	HMA	2	21	18
21+43	RT	PE	12.5	HMA	2		7
22+41.5	RT	PE	27.5	HMA	1	16	22
25+51	LT	PE	143	HMA	40		118
<b>TOTAL</b>					<b>50</b>	<b>86</b>	<b>212</b>

**ENTRANCE NOTES:**

- PRIOR TO CONSTRUCTION, THE ENGINEER WILL CONTACT EACH PROPERTY OWNER AND VERIFY THE LOCATION AND WIDTH OF ALL ENTRANCES. THE CONTRACTOR SHALL CONFIRM THE FINAL LOCATIONS AND WIDTHS WITH THE ENGINEER PRIOR TO CONSTRUCTION. SEE CONSTRUCTION DETAILS SHEET FOR ENTRANCE DETAILS.
- DEPRESSED CURB AND GUTTER THROUGH ENTRANCES SHALL BE MEASURED FOR PAYMENT AS CONCRETE GUTTER, SPECIAL

FILE NAME = H:\PA\2015\Information\Sheets\081215\111\_Schedule.dgn



USER NAME = brian.hell	DESIGNED -	REVISED -
PLOT SCALE = 48.0000' / 1"	DRAWN -	REVISED -
PLOT DATE = 12/4/2015	CHECKED -	REVISED -
	DATE -	REVISED -

**STATE OF ILLINOIS  
DEPARTMENT OF TRANSPORTATION**

<b>SCHEDULES OF QUANTITIES</b>			
SCALE:	SHEET 1 OF 2 SHEETS	STA.	TO STA.

F.A.U. RTE.	SECTION	COUNTY	TOTAL SHEETS	SHEET NO.
9328	12-00041-00-RS	ST. CLAIR	24	6
JOSEPH DR RESURFACING		CONTRACT NO. 97613		
ILLINOIS FED. AID PROJECT				

**SIGN AND POST**

STATION	OFFSET	MUTCD TYPE	DESCRIPTION	SIZE	SIGN PANEL T1	REMOV SIN PAN T1	TELES STL SIN SUP SPL
				(FT X FT)	(SQ FT)	(SQ FT)	(FOOT)
10+00	16' LT	W1-1L	CURVE WARNING	30 X 30	6.3		16.0
		W13-1P	SPEED PLAQUE	18 X 18	2.3		
11+00	16' LT	R7-1a	NO PARKING	12 X 18	1.5		13.5
11+50	16' RT	R2-1	SPEED LIMIT	24 X 30	5.0		14.5
11+65	16' LT	W1-1R	CURVE WARNING	30 X 30	6.3		16.0
		W13-1P	SPEED PLAQUE	18 X 18	2.3		
13+05	16' RT	R7-1a	NO PARKING	12 X 18	1.5		13.5
13+27	16' RT	R2-1	SPEED LIMIT	24 X 30		5.0	
14+55	16' RT	R7-1a	NO PARKING	12 X 18	1.5		13.5
21+25	16' LT	R7-1a	NO PARKING	12 X 18	1.5		13.5
22+50	16' LT	R7-1a	NO PARKING	12 X 18	1.5		13.5
27+10	16' RT	R7-1a	NO PARKING	12 X 18	1.5		13.5
27+10	16' LT	R7-1a	NO PARKING	12 X 18	1.5		13.5
28+40	16' RT	R7-1a	NO PARKING	12 X 18	1.5		13.5
28+40	16' LT	R7-1a	NO PARKING	12 X 18	1.5		13.5
30+00	16' LT	R7-1a	NO PARKING	12 X 18	1.5		13.5
31+30	16' LT	R7-1a	NO PARKING	12 X 18	1.5		13.5
32+50	16' LT	R2-1	SPEED LIMIT	24 X 30	5.0		14.5
32+95	16' LT	R7-1a	NO PARKING	12 X 18	1.5		13.5
34+16	16' LT	R7-1a	NO PARKING	12 X 18	1.5		13.5
<b>TOTAL</b>					<b>46.7</b>	<b>5.0</b>	<b>236.5</b>

**PAVEMENT MARKING**

STATION	TEMP PVT MK LTR & SYM (NOTE 2) (SQ FT)	TEMP PVT MK LINE 12 (WHITE) (NOTE 1) (FOOT)	TEMP PVT MK LINE 24 (WHITE) (NOTE 1) (FOOT)	WORK ZONE PAVT MK REM (SQ FT)	THPL PVT MK LTR & SYM (NOTE 2) (SQ FT)	THPL PVT MK LINE 12 (WHITE) (NOTE 1) (FOOT)	THPL PVT MK LINE 24 (WHITE) (NOTE 1) (FOOT)
ARCHWAY		129	19	167		129	19
FORDHAM		122	19	160		122	19
21+61	19			19	19		
ELVIRA		315	59	433		315	59
30+24	19			19	19		
<b>TOTAL</b>	<b>38</b>	<b>566</b>	<b>97</b>	<b>798</b>	<b>38</b>	<b>566</b>	<b>97</b>

**PAVEMENT MARKING NOTES:**

- SEE HIGHWAY STANDARD 780001 FOR PAVEMENT MARKING DETAILS
- "SCHOOL" IN 6' TALL LETTERING. SEE PAVEMENT MARKING SHEET.

**PAVEMENT PATCHING SCHEDULE**

STATION	STATION	DIMENSION	REM & DISP UNS MATL	SUB GRAN MAT C 12	CL C PATCH T2 9	CL C PATCH T3 9
			(CU YD)	(SQ YD)	(SQ YD)	(SQ YD)
27+86	28+07	10' APRON	6	19		19
29+50	29+60	10 X 8	3	9	9	
<b>TOTALS</b>			<b>9</b>	<b>28</b>	<b>9</b>	<b>19</b>

FILE NAME: H:\V\2015\Microstation\Sheets\0812015-INT-Schedule.dgn



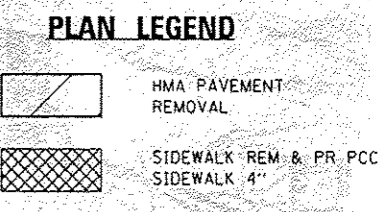
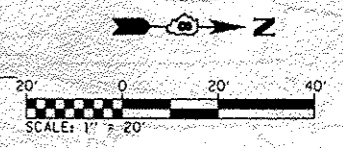
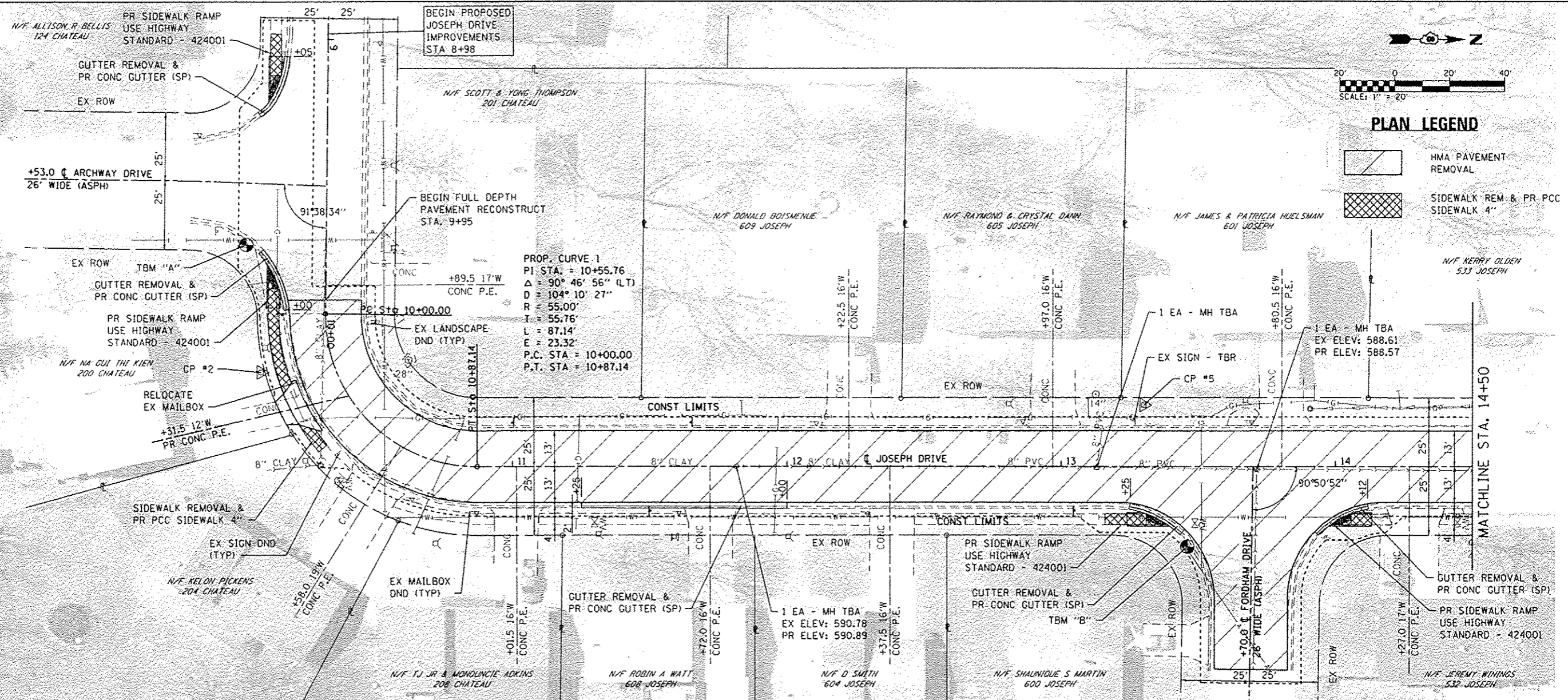
USER NAME = brian.holt	DESIGNED -	REVISED -
PLOT SCALE = 48.0000' / in.	DRAWN -	REVISED -
PLOT DATE = 12/4/2015	CHECKED -	REVISED -
	DATE -	REVISED -

**STATE OF ILLINOIS  
DEPARTMENT OF TRANSPORTATION**

**SCHEDULES OF QUANTITIES**

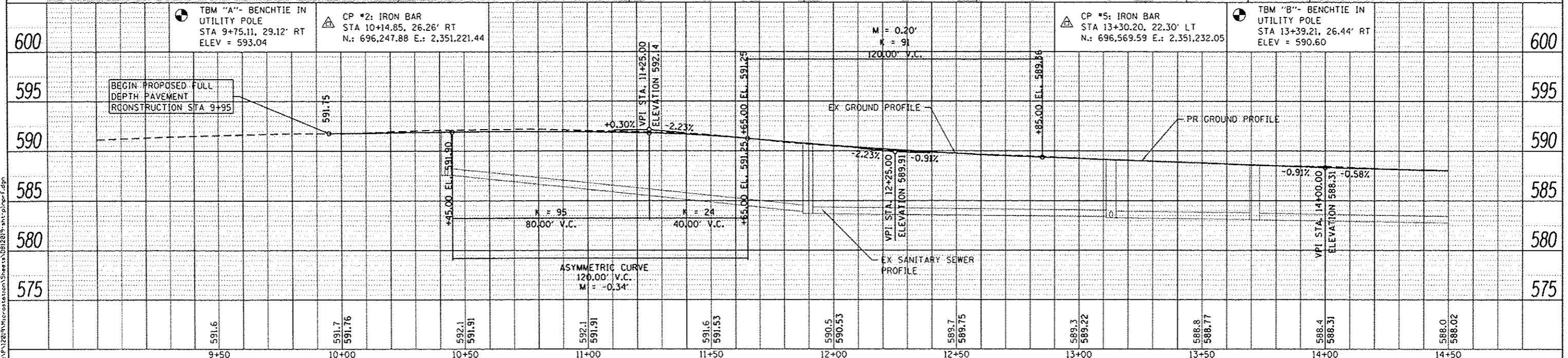
SCALE: SHEET 2 OF 2 SHEETS STA. TO STA.

F.A.U. RTE.	SECTION	COUNTY	TOTAL SHEETS	SHEET NO.
9328	12-00041-00-RS	ST. CLAIR	24	7
JOSEPH DR RESURFACING			CONTRACT NO. 97613	
ILLINOIS FED. AID PROJECT				



PLAN	DATE
REVISION	DATE
NO.	

PROFILE	DATE
NO.	



<p><b>DATES ASSOCIATES</b> Engineering &amp; Architecture</p> <p>ILLINOIS DESIGN FIRM LICENSE NO. 184-001115</p>	USER NAME = brian.hart	DESIGNED -	REVISED -	<b>STATE OF ILLINOIS</b> <b>DEPARTMENT OF TRANSPORTATION</b>	<b>PLAN &amp; PROFILE SHEETS</b>	F.A.U. RTE. = 9328	SECTION = 12-00041-00-RS	COUNTY = ST. CLAIR	TOTAL SHEETS = 24	SHEET NO. = 8		
	PLOT SCALE = 48,0000 1/1 in.	CHECKED -	REVISED -			SCALE: 1"=20'	SHEET 1 OF 5 SHEETS	STA. 9+95 TO STA. 14+50	JOSEPH DR RESURFACING CONTRACT NO. 97613			
	PLOT DATE = 12/4/2015	DATE -	REVISED -			ILLINOIS FED. AID PROJECT						

FILE NAME = H:\1234\Information\Sheets\092819\pr-plan-f.dgn

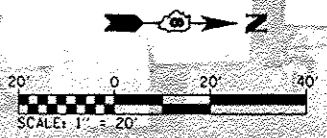
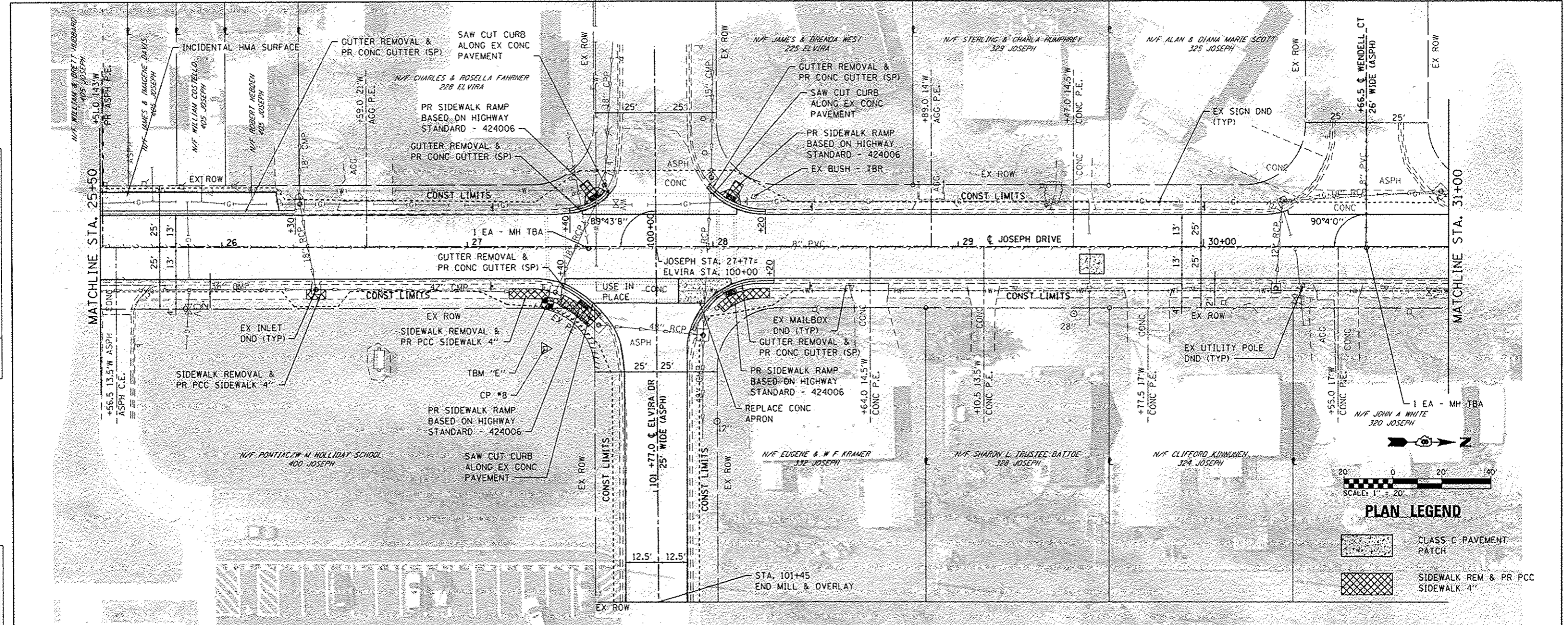






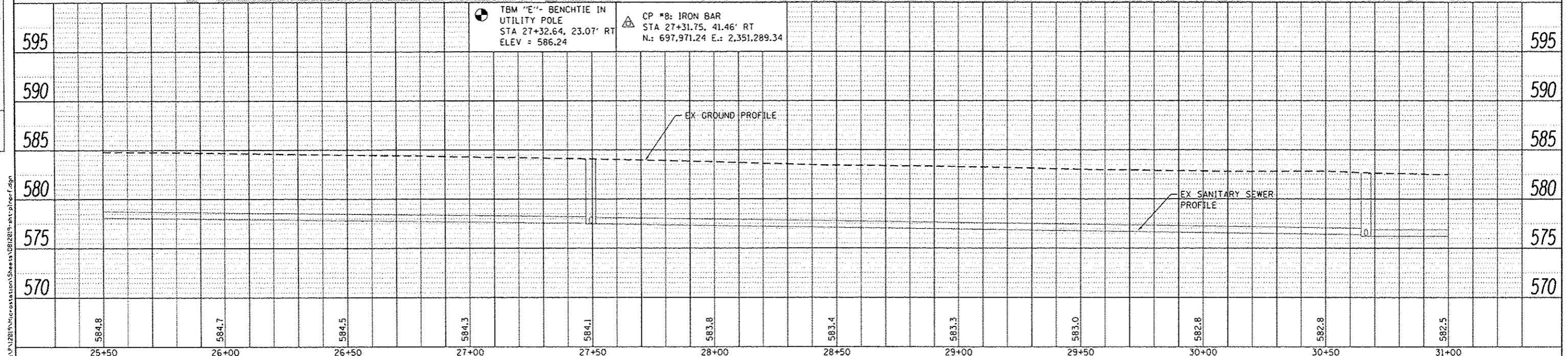
PLAN	DATE
REVISED	
NOTE BOOK	
NO.	

PROFILE	DATE
REVISED	
NOTE BOOK	
NO.	



**PLAN LEGEND**

	CLASS C PAVEMENT PATCH
	SIDEWALK REM & PR PCC SIDEWALK 4"



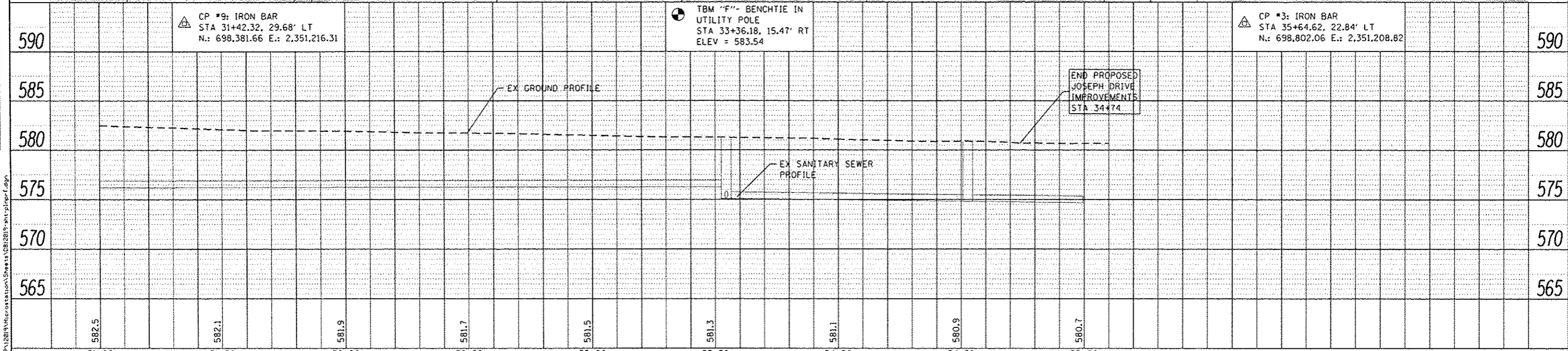
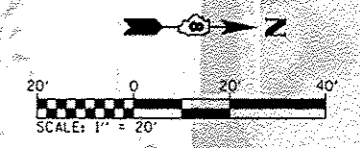
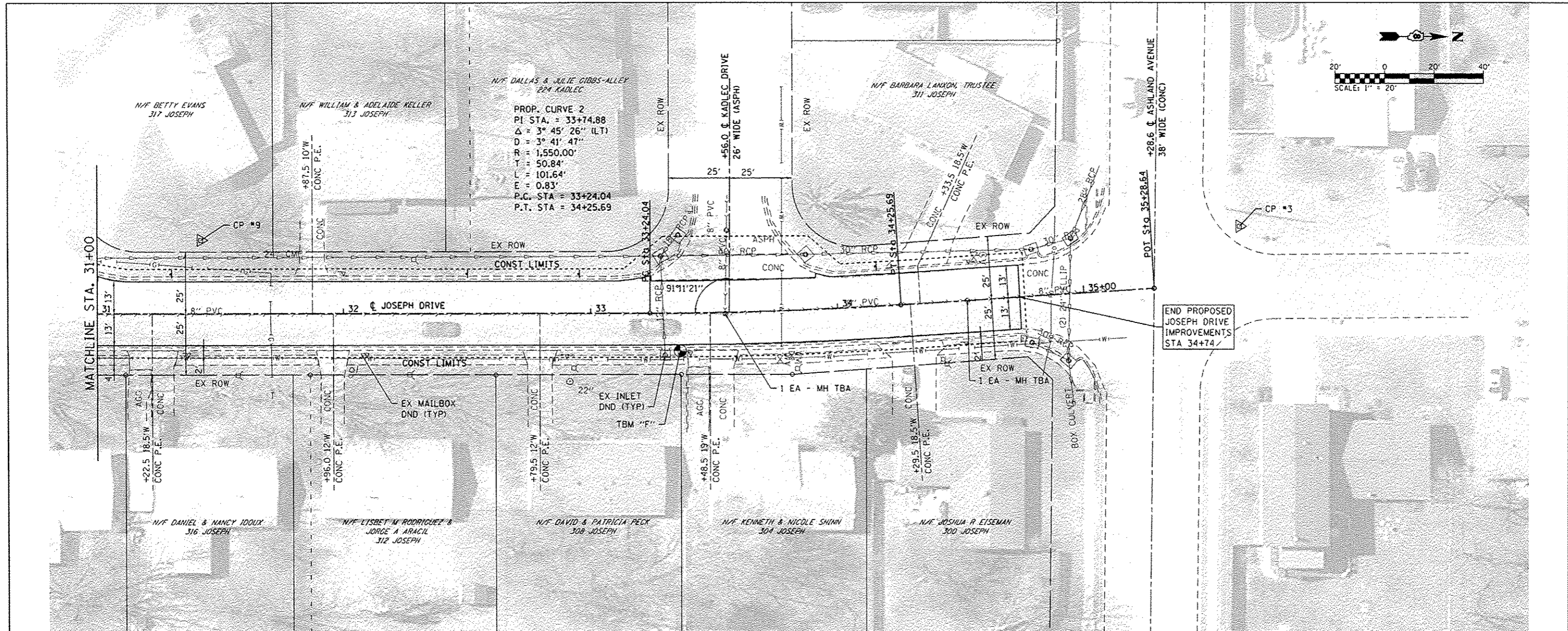
584.8	584.7	584.5	584.3	584.1	583.8	583.4	583.3	583.0	582.8	582.8	582.5
25+50	26+00	26+50	27+00	27+50	28+00	28+50	29+00	29+50	30+00	30+50	31+00

USER NAME	DESIGNED	REVISED	STATE OF ILLINOIS DEPARTMENT OF TRANSPORTATION	PLAN & PROFILE SHEETS	F.A.U. RTE.	SECTION	COUNTY	TOTAL SHEETS	SHEET NO.
brianhail	-	-			9328	12-00041-00-RS	ST. CLAIR	24	11
PLOT SCALE = 48,0000' / in.	CHECKED	REVISED			JOSEPH DR RESURFACING CONTRACT NO. 97613				
PLOT DATE = 12/4/2015	DATE	REVISED			ILLINOIS FED. AID PROJECT				

FILE NAME = H:\P\2818\Hrcastation\Sheets\DR2818\p-ntc\pof.dgn

PLAN	DATE
REVISED	
NO. 1	
NO. 2	
NO. 3	
NO. 4	
NO. 5	
NO. 6	
NO. 7	
NO. 8	
NO. 9	
NO. 10	

PROFILE	DATE
REVISED	
NO. 1	
NO. 2	
NO. 3	
NO. 4	
NO. 5	
NO. 6	
NO. 7	
NO. 8	
NO. 9	
NO. 10	



FILE NAME: H:\V\2019\Hercostation\Sheets\2019-ent-plp-rf.dgn  
**GATES ASSOCIATES**  
 Engineering • Architecture  
 ILLINOIS DESIGN FIRM LICENSE NO: 184.001115

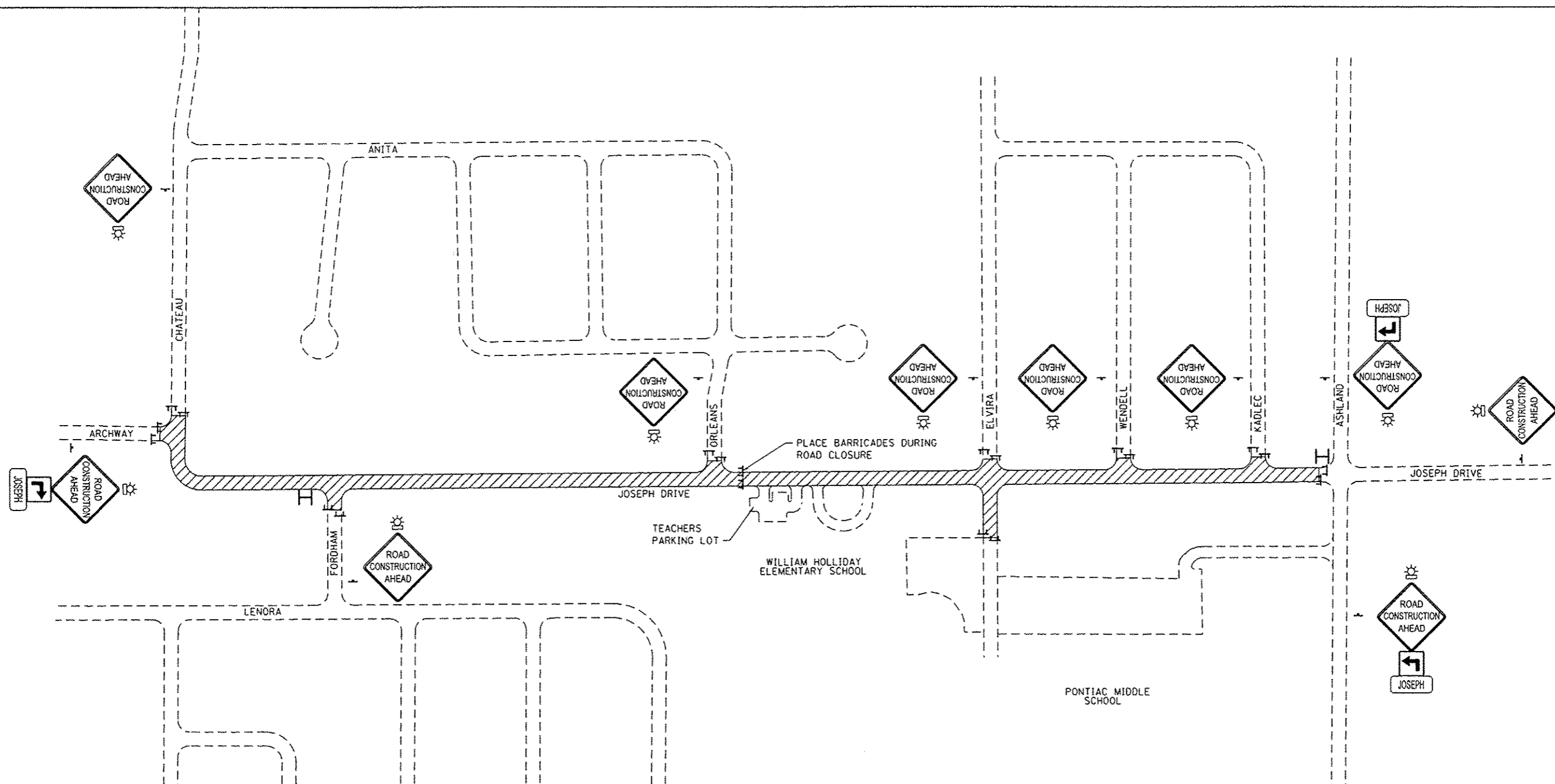
USER NAME: brianheit	DESIGNED -	REVISED -
PLDT SCALE: 48.0000' / 1"	DRAWN -	REVISED -
PLDT DATE: 12/4/2015	CHECKED -	REVISED -
	DATE -	REVISED -

**STATE OF ILLINOIS**  
**DEPARTMENT OF TRANSPORTATION**





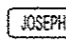


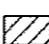
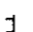
**PLAN & PROFILE SHEETS**

SCALE: 1"=20'    SHEET 5 OF 5 SHEETS    STA. 31+00 TO STA. 34+74

F.A.U. RTE.	SECTION	COUNTY	TOTAL SHEETS	SHEET NO.
9328	12-00041-00-RS	ST. CLAIR	24	12
JOSEPH DR RESURFACING			CONTRACT NO. 97613	
ILLINOIS FED. AID PROJECT				



**TRAFFIC CONTROL PLAN LEGEND**

-  W20-10 (48" x 48") (FLUORESCENT ORANGE)
-  SPECIAL (24" x 24") (FLUORESCENT ORANGE)
-  SPECIAL (24" x 24") (FLUORESCENT ORANGE)
-  VARIABLE MESSAGE SIGN
-  SPECIAL
-  TRAFFIC CONTROL SIGN LOCATION
-  TYPE A LOW INTENSITY FLASHING LIGHT
-  WORK AREA
-  TYPE III BARRICADE

**TRAFFIC CONTROL NOTES**

1. ALL TRAFFIC CONTROL SIGNS, BARRICADES, AND MAINTENANCE TO BE INCLUDED IN THE COST OF TRAFFIC CONTROL AND PROTECTION, (SPECIAL).
2. ACCESS TO ENTRANCES SHALL BE MAINTAINED EXCEPT DURING THE CEMENT MODIFICATION PROCESS
3. THE CONTRACTOR SHALL MAINTAIN DRAINAGE THROUGHOUT CONSTRUCTION.
4. TYPE A LOW INTENSITY FLASHING LIGHTS SHALL BE USED ON THE FIRST SIGN IN ADVANCE OF THE WORK SITE AND ON ALL TYPE III BARRICADES DURING HOURS OF DARKNESS.
5. BARRICADES AND SIGNS SHALL BE POSITIONED AS SHOWN, ACCORDING TO HIGHWAY STANDARDS, THE MANUAL ON UNIFORM TRAFFIC CONTROL DEVICES, AND AS DIRECTED BY THE ENGINEER.
6. THE EXACT LOCATION OF THE BARRICADES AND SIGNS SHALL BE STAKED IN THE FIELD BY THE CONTRACTOR TWO WORKING DAYS IN ADVANCE OF CONSTRUCTION OPERATIONS FOR APPROVAL BY THE ENGINEER.
7. THE ROAD WILL BE KEPT OPEN DURING RESURFACING.
8. THE ROAD CAN BE CLOSED DURING THE CEMENT MODIFICATION PROCESS FOR A MAXIMUM OF 10 CONTINUOUS CALENDER DAYS. THE CONTRACTOR SHALL NOTIFY ALL RESIDENTS 7 DAYS AND 48 HOURS PRIOR TO CLOSURE.
9. DURING THE ROAD CLOSURE, RESIDENTS ARE PERMITTED TO PARK IN THE WILLIAM HOLLIDAY ELEMENTARY TEACHER PARKING LOT.

FILE NAME: H:\V\2019\Resurfacing\Sheets\DR12019-INT-Stage1.dgn

**OATES ASSOCIATES**  
Engineering + Architecture  
ILLINOIS DESIGN FIRM LICENSE NO. 184-001115

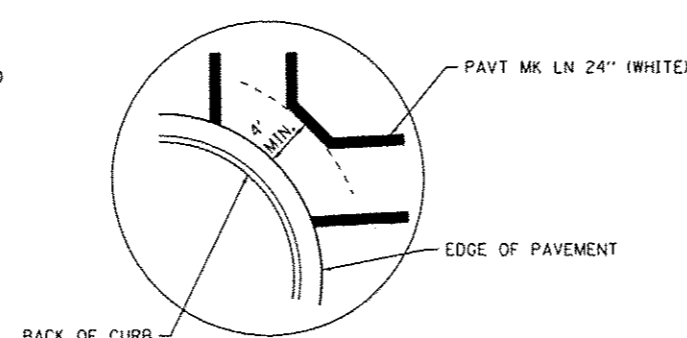
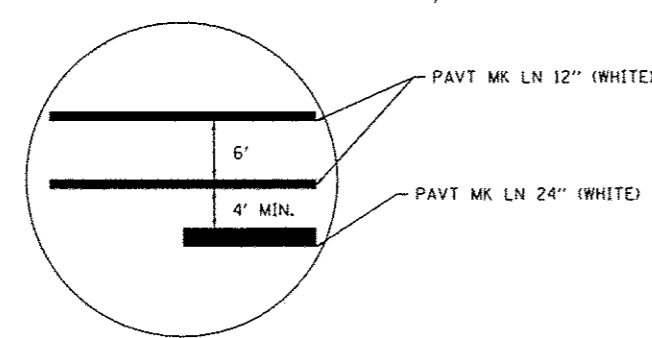
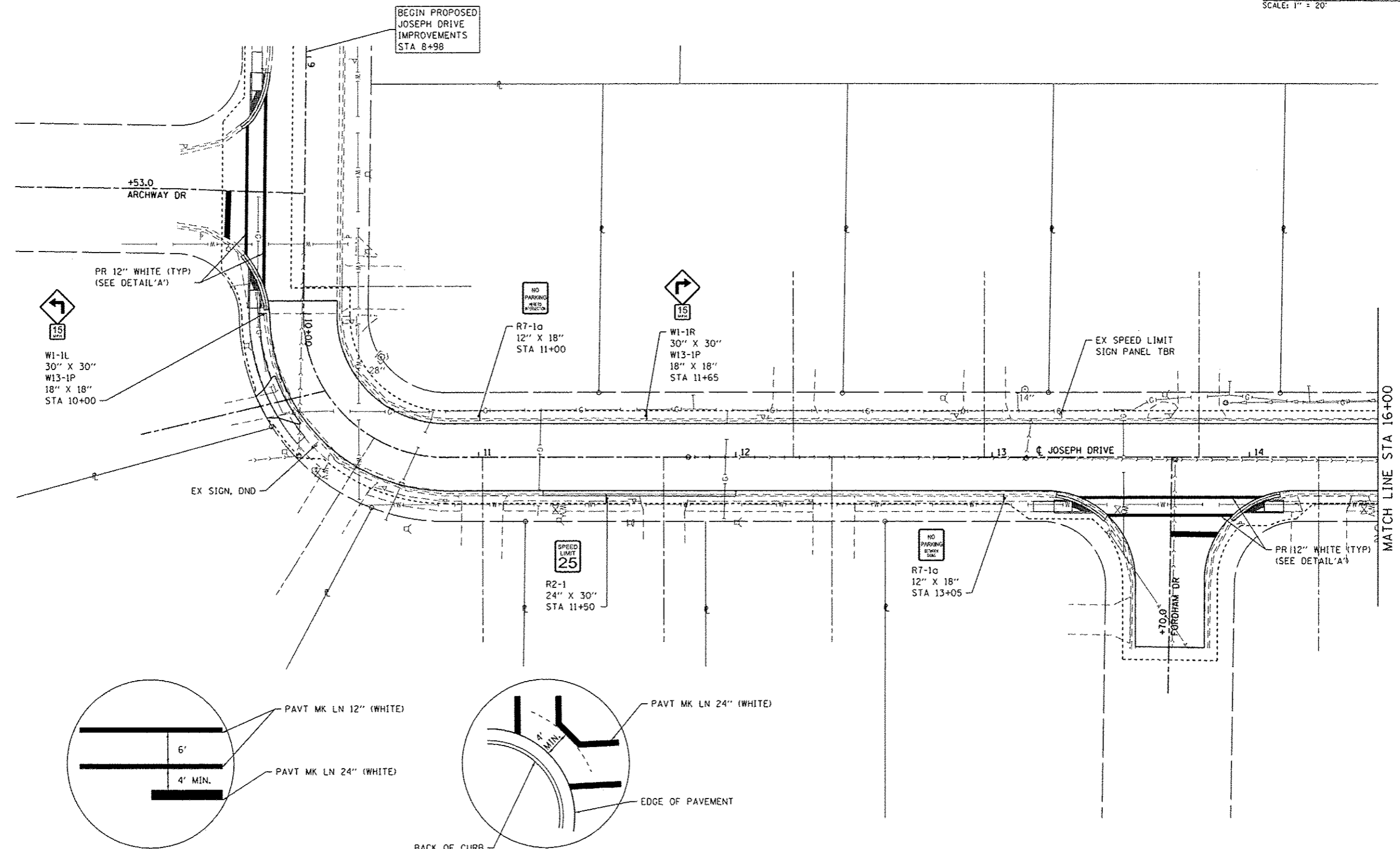
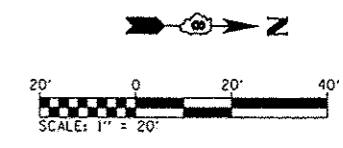
USER NAME: brian.heil	DESIGNED: -	REVISED: -
DRAWN: -	CHECKED: -	REVISIONS: -
DATE: -		

**STATE OF ILLINOIS  
DEPARTMENT OF TRANSPORTATION**

**TRAFFIC CONTROL PLAN**

N.T.S. SHEET NO. 1 OF 1 SHEETS STA. TO STA.

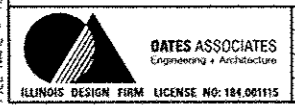
F.A.U. RTE.	SECTION	COUNTY	TOTAL SHEETS	SHEET NO.
9328	12-00041-00-RS	ST. CLAIR	24	13
JOSEPH DR RESURFACING			CONTRACT NO. 97613	
ILLINOIS FED. AID PROJECT				



**DETAIL "A"**  
(NOT TO SCALE)

**DETAIL "B"**  
(NOT TO SCALE)

FILE NAME: H:\V\12819\Information\Sheets\0812013\INT-pmk.rwdgn



USER NAME = brian.heil	DESIGNED -	REVISED -
PLOT SCALE = 48,0000' / in.	DRAWN -	REVISED -
PLOT DATE = 12/14/2015	CHECKED -	REVISED -
	DATE -	REVISED -

**STATE OF ILLINOIS  
DEPARTMENT OF TRANSPORTATION**

**EROSION CONTROL, PAVEMENT MARKING, AND SIGNING SHEET**

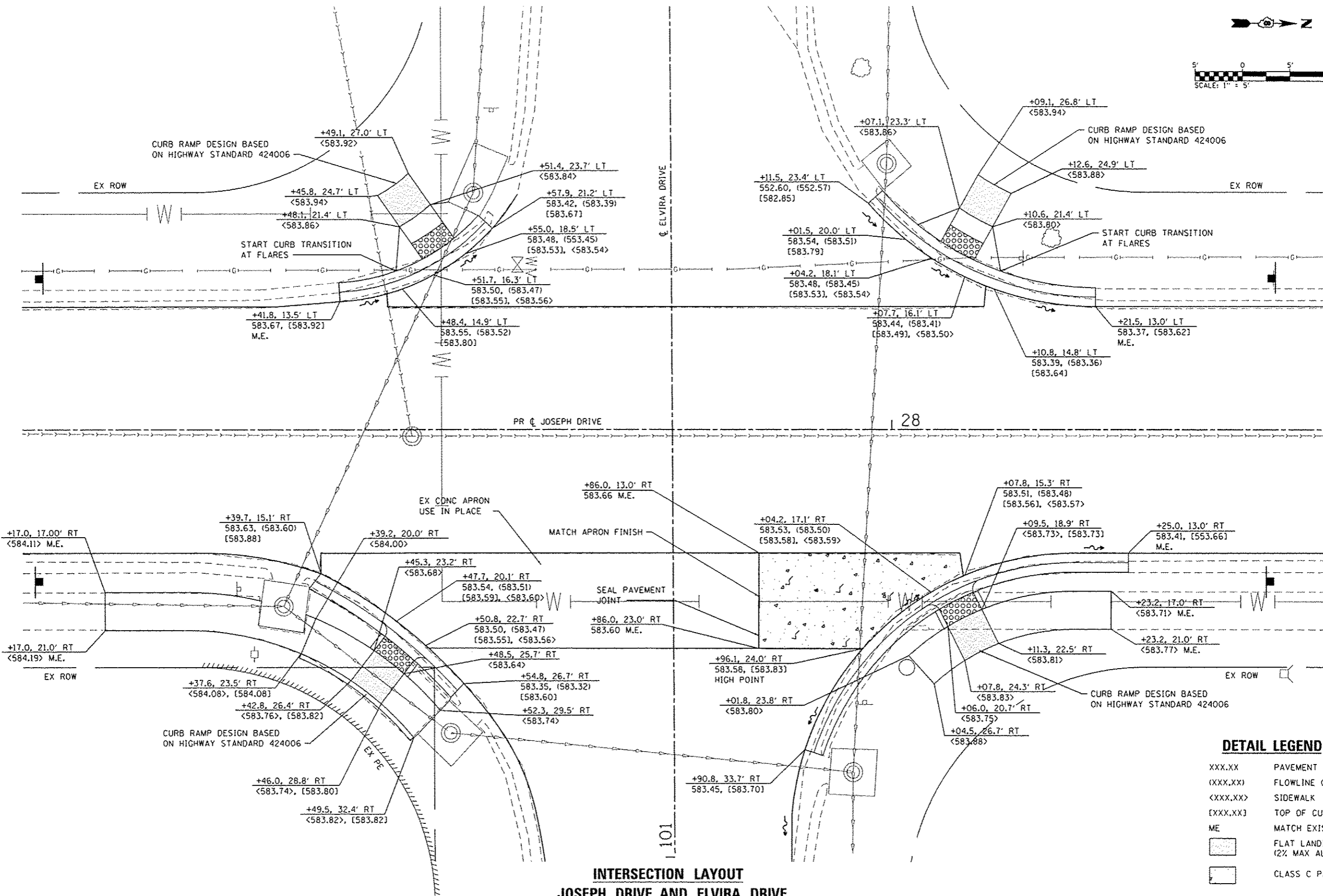
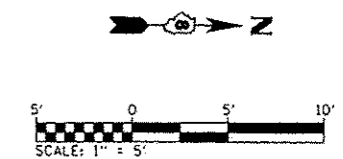
SCALE: 1" = 20' SHEET 1 OF 3 SHEETS STA. 8+98 TO STA. 14+50

F.A.U. RTE.	SECTION	COUNTY	TOTAL SHEETS	SHEET NO.
9328	12-00041-00-R5	ST. CLAIR	24	14
JOSEPH DR RESURFACING			CONTRACT NO. 97613	
ILLINOIS FED. AID PROJECT				









**INTERSECTION LAYOUT  
JOSEPH DRIVE AND ELVIRA DRIVE**

**DETAIL LEGEND**

- XXX.XX PAVEMENT
- (XXX.XX) FLOWLINE OF GUTTER
- <XXX.XX> SIDEWALK
- [XXX.XX] TOP OF CURB
- ME MATCH EXISTING
- [ ] FLAT LANDING AREA (2% MAX ALL DIRECTIONS)
- [ ] CLASS C PAVEMENT PATCH

FILE NAME: R:\PN\2019\Intersections\Sheets\DR2019-Int-1-Inters.dgn

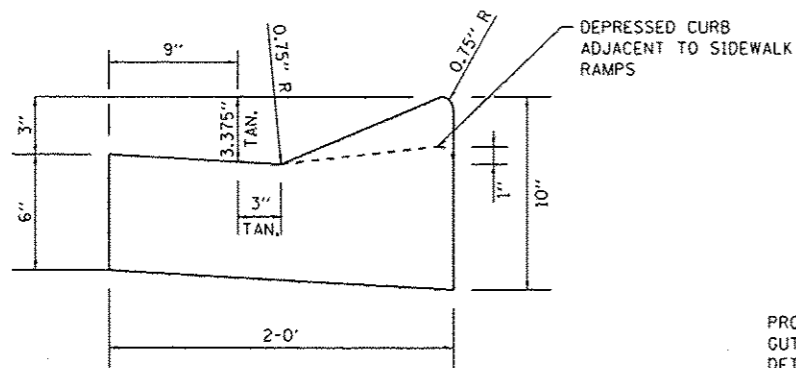


USER NAME: brian.hall	DESIGNED: -	REVISED: -
DRAWN: -	CHECKED: -	DATE: -
PLLOT SCALE: 1/8" = 1' = 1/8"		
PLLOT DATE: 12/4/2015		

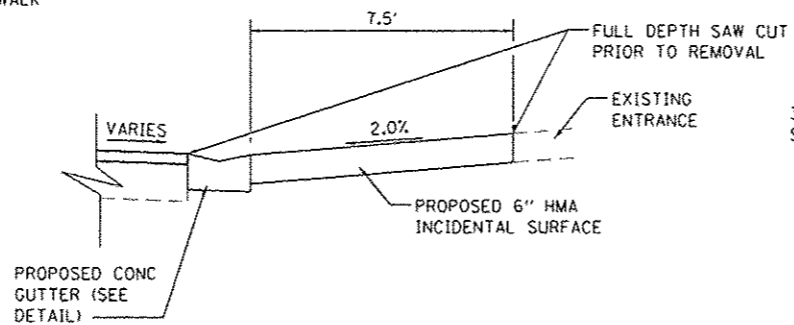
**STATE OF ILLINOIS  
DEPARTMENT OF TRANSPORTATION**

<b>INTERSECTION DETAILS</b>	
SCALE: 1" = 5'	SHEET 1 OF 1 SHEETS
STA. _____	TO STA. _____

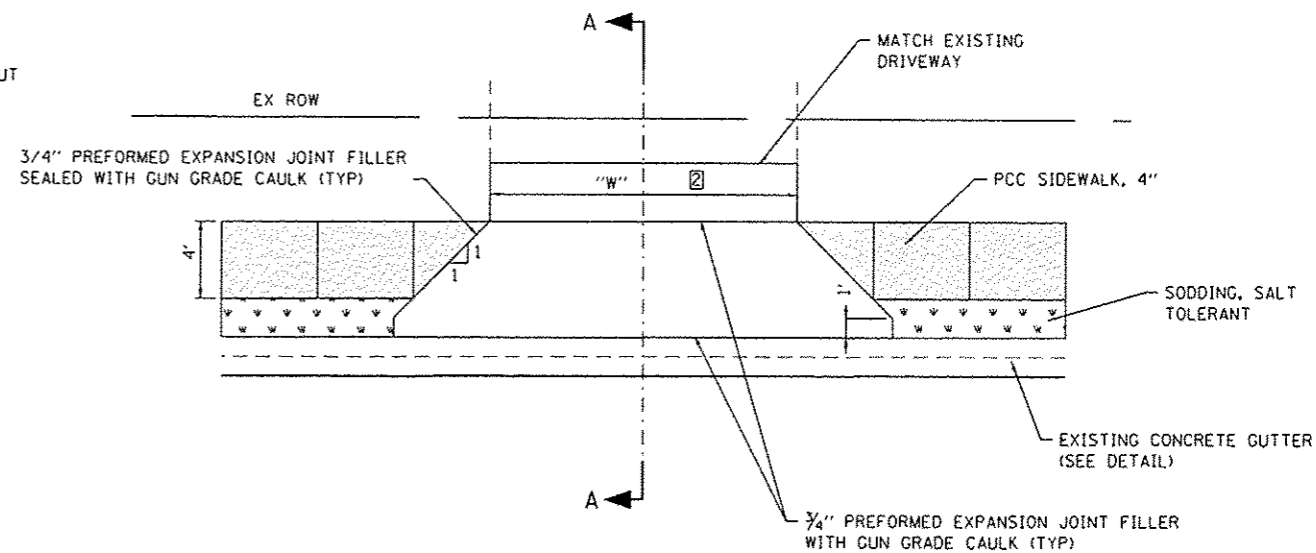
F.A.U. RTE. 9328	SECTION 12-00041-00-R5	COUNTY ST. CLAIR	TOTAL SHEETS 24	SHEET NO. 17
JOSEPH DR RESURFACING		CONTRACT NO. 97613		
ILLINOIS FED. AID PROJECT				



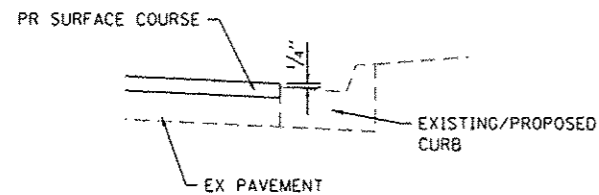
**CONCRETE GUTTER, SPECIAL**  
(NOT TO SCALE)



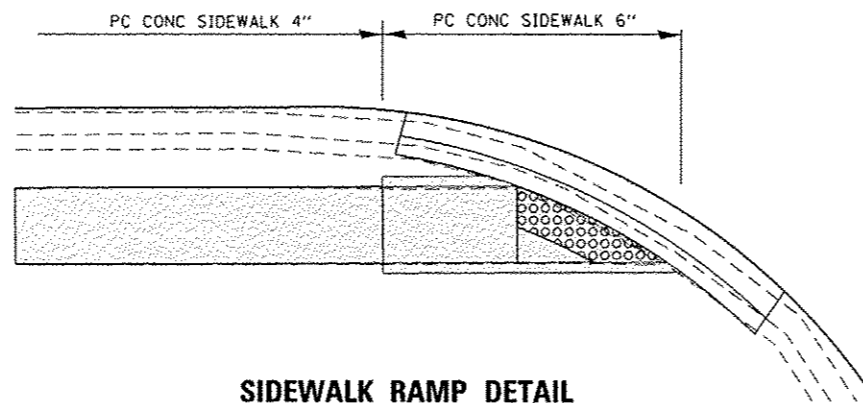
**PRIVATE ENTRANCE DETAIL**  
**STATION 125 + 51 LT**  
(NOT TO SCALE)



**PRIVATE ENTRANCE DETAIL**  
(NOT TO SCALE)



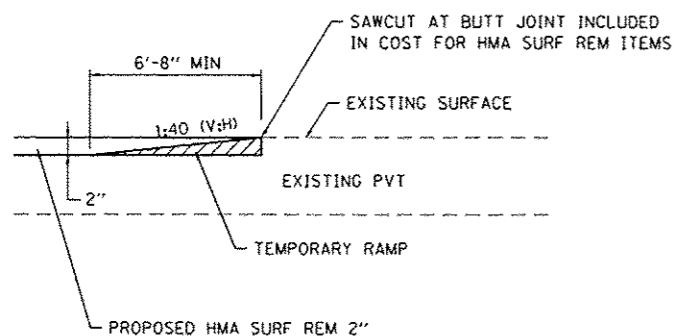
**PAVEMENT AT CURB DETAIL**  
(NOT TO SCALE)



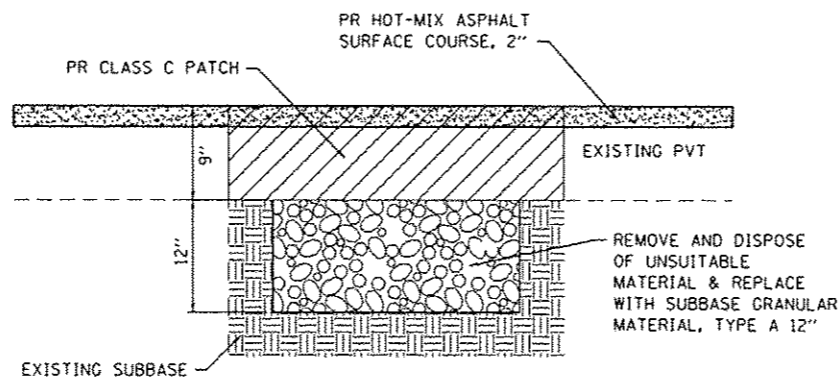
**SIDEWALK RAMP DETAIL**  
(NOT TO SCALE)

**ENTRANCE NOTES:**

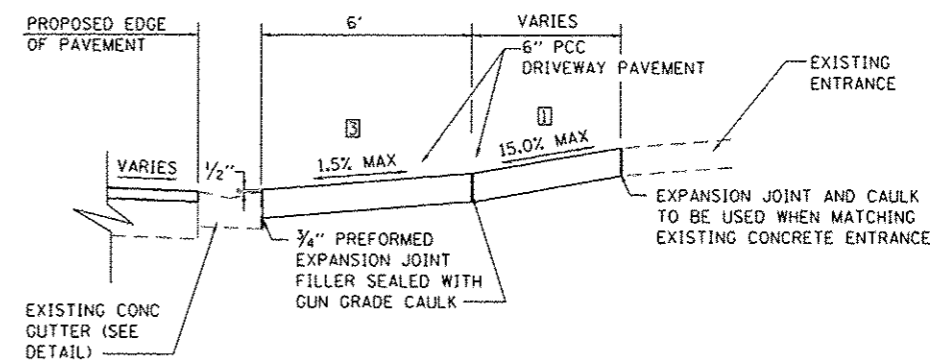
- ① SEE CROSS SECTIONS FOR ACTUAL SLOPE
- ② SEE ENTRANCE SCHEDULE FOR ADDITIONAL INFORMATION
- ③ SIDEWALK APRON TO BE POURED SEPARATELY, PRIOR TO POURING SECTION ADJACENT TO EXISTING DRIVEWAY



**TEMPORARY RAMP DETAIL**  
(NOT TO SCALE)



**PAVEMENT PATCHING DETAIL**  
(NOT TO SCALE)



**SECTION A-A**  
(NOT TO SCALE)

FILE NAME: H:\P\2015\Hwy\resurfacing\Sheet\DR15019-INT-CD-1.dwg



USER NAME: brian.hel  
DESIGNED: -  
DRAWN: -  
PLOT SCALE: 48.0000' / in.  
CHECKED: -  
PLOT DATE: 12/4/2015  
DATE: -

DESIGNED: -  
DRAWN: -  
CHECKED: -  
DATE: -

REVISED: -  
REVISED: -  
REVISED: -  
REVISED: -

STATE OF ILLINOIS  
DEPARTMENT OF TRANSPORTATION

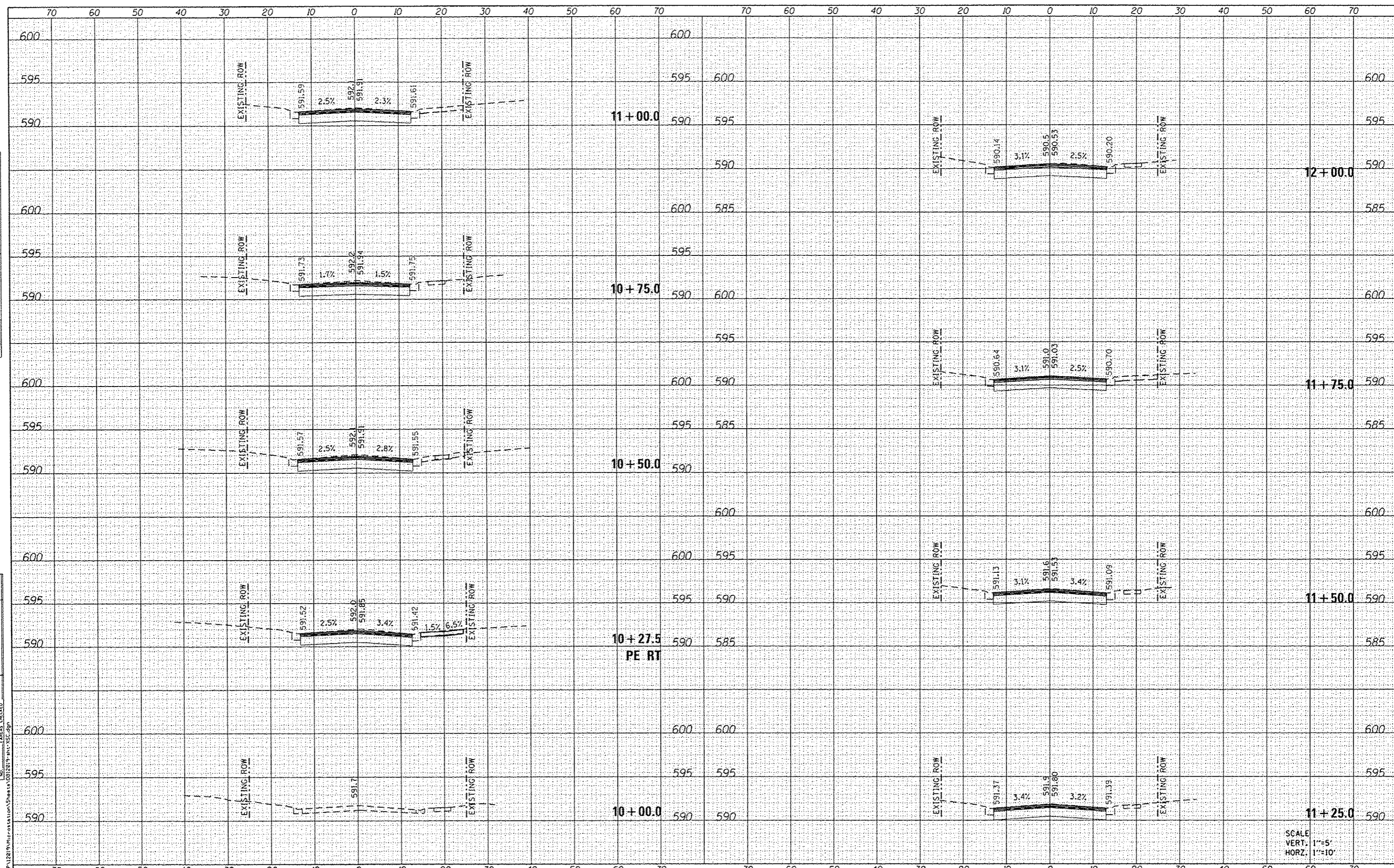
CONSTRUCTION DETAILS

SCALE: SHEET 1 OF 1 SHEETS STA. TO STA.

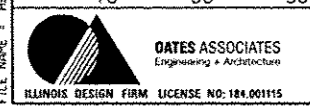
F.A.U. RTE.	SECTION	COUNTY	TOTAL SHEETS	SHEET NO.
9328	12-00041-00-RS	ST. CLAIR	24	18
JOSEPH DR RESURFACING			CONTRACT NO. 97613	
ILLINOIS FED. AID PROJECT				

DATE	
BY	
REVISED	
PLOTTED	
TEMPLATE	
NOTE BOOK	
AREAS CHECKED	
NO.	

DATE	
BY	
REVISED	
PLOTTED	
TEMPLATE	
NOTE BOOK	
AREAS CHECKED	
NO.	



SCALE:  
VERT: 1"=5'  
HORZ: 1"=10'



USER NAME = brian.hart	DESIGNED -	REVISED -
PLLOT SCALE = 20,000 / in.	DRAWN -	REVISED -
PLLOT DATE = 12/4/2015	CHECKED -	REVISED -
	DATE -	REVISED -

STATE OF ILLINOIS  
DEPARTMENT OF TRANSPORTATION

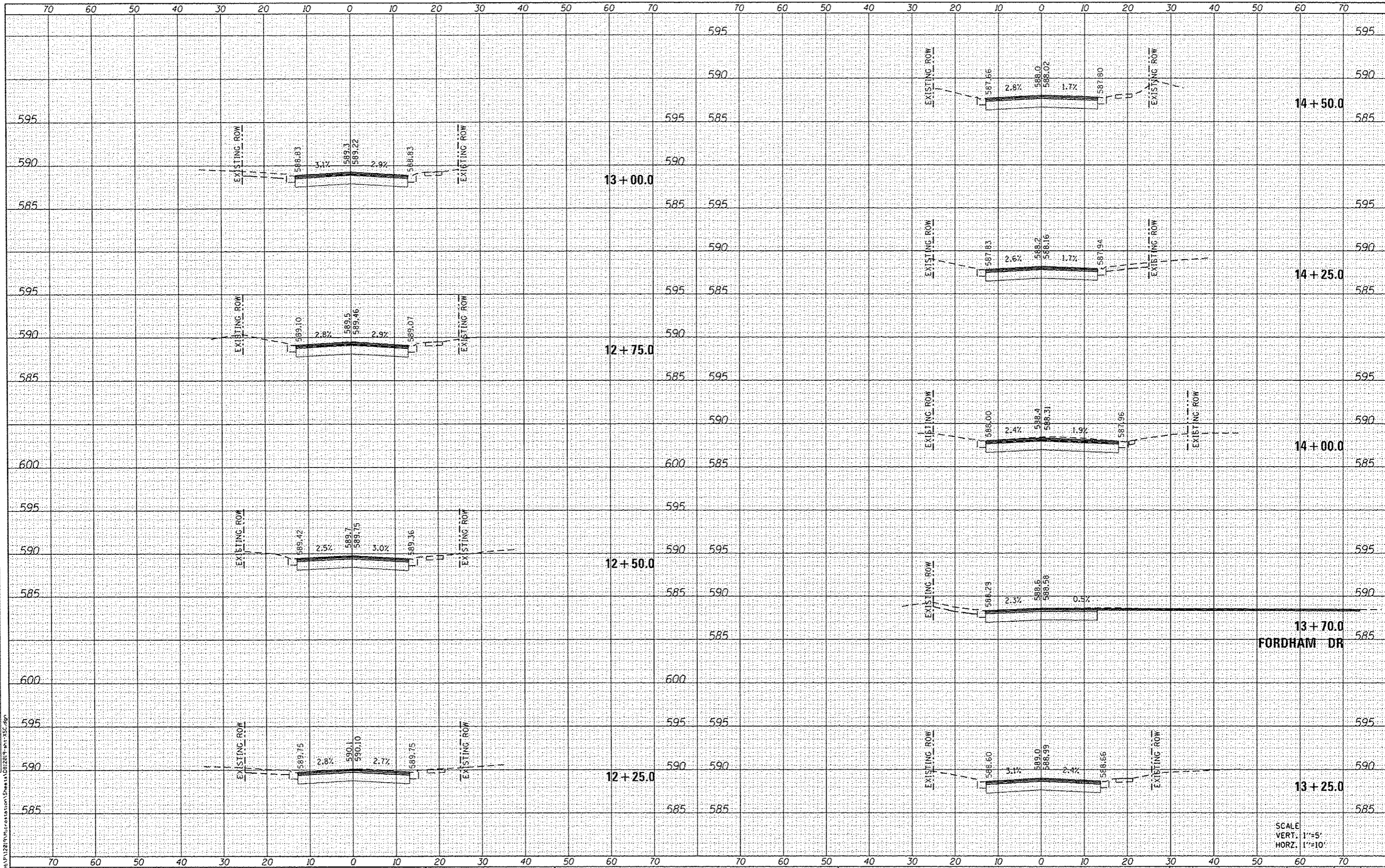
SCALE:	SHEET 1 OF 6 SHEETS	STA. 10+00.0 TO STA. 12+00.0
--------	---------------------	------------------------------

F.A.U. RTE.	SECTION	COUNTY	TOTAL SHEETS	SHEET NO.
9328	12-00041-00-RS	ST. CLAIR	24	19
JOSEPH DR RESURFACING			CONTRACT NO. 97613	
ILLINOIS FED. AID PROJECT				

DATE	
BY	
DESIGNED	
DRAWN	
CHECKED	
DATE	
REVISIONS	
NO.	
DESCRIPTION	
DATE	
BY	
DATE	
BY	
DATE	
BY	
DATE	

DATE	
BY	
DESIGNED	
DRAWN	
CHECKED	
DATE	
REVISIONS	
NO.	
DESCRIPTION	
DATE	
BY	
DATE	
BY	
DATE	
BY	
DATE	

FILE NAME: H:\V12019\Microstation\Sheets\DR12219.dwg  
 ILLINOIS DESIGN FIRM LICENSE NO: 184.061115



**OATES ASSOCIATES**  
 Engineering + Architecture  
 ILLINOIS DESIGN FIRM LICENSE NO: 184.061115

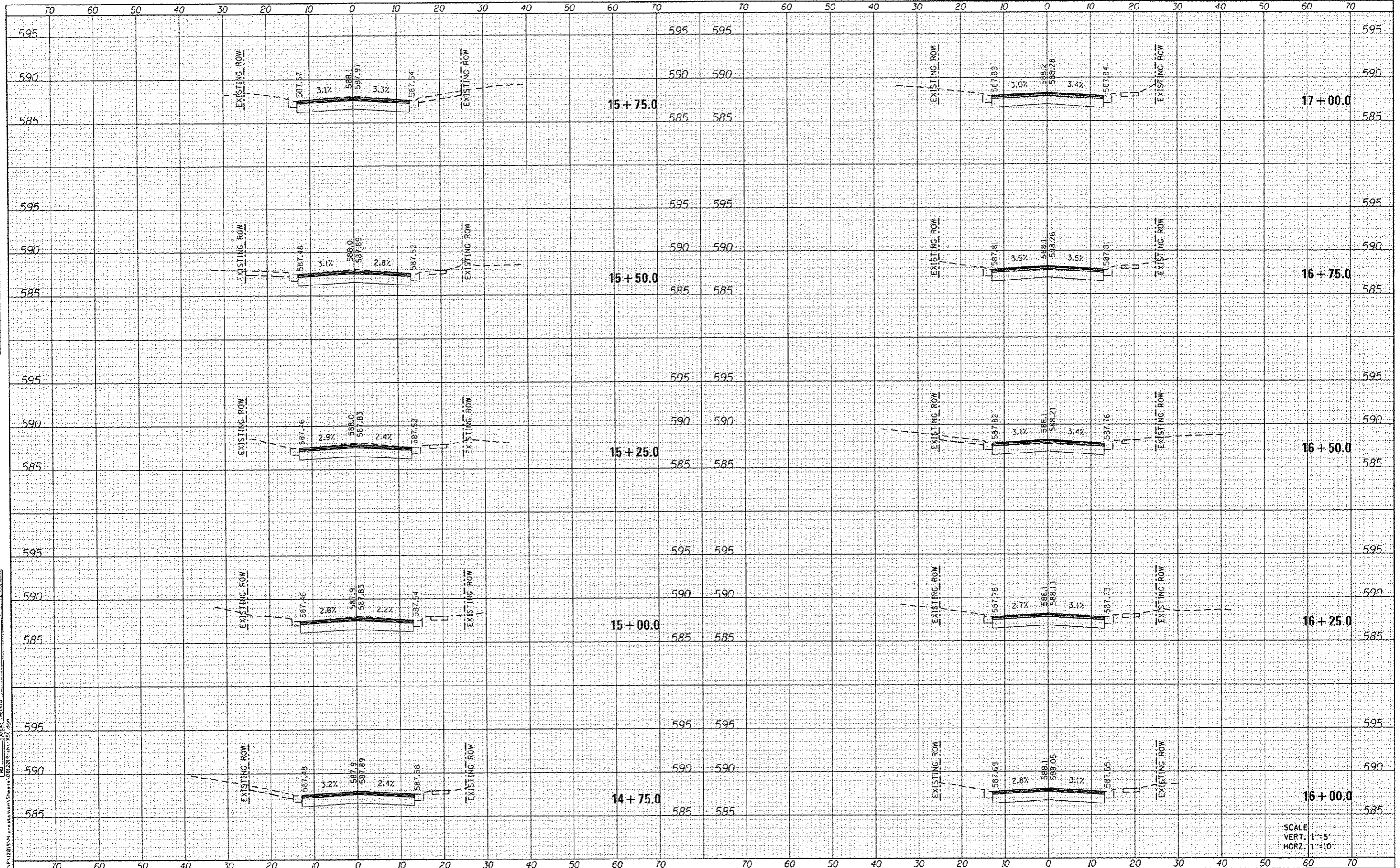
USER NAME: brianheil	DESIGNED: -	REVISED: -
PLOT SCALE: 28.8000' / 1"	DRAWN: -	REVISED: -
PLOT DATE: 12/4/2015	CHECKED: -	REVISED: -
	DATE: -	REVISED: -

**STATE OF ILLINOIS  
 DEPARTMENT OF TRANSPORTATION**

CROSS SECTIONS	
SCALE:	SHEET 2 OF 6 SHEETS STA. 12+25.0 TO STA. 14+50.0

F.A.U. RTE.	SECTION	COUNTY	TOTAL SHEETS	SHEET NO.
9328	12-00041-00-RS	ST. CLAIR	24	20
JOSEPH DR RESURFACING			CONTRACT NO. 97613	
ILLINOIS FED. AID PROJECT				

SCALE  
 VERT. 1"=5'  
 HORIZ. 1"=10'



SCALE:  
VERT. 1"=5'  
HORZ. 1"=10'

DATE	
BY	
FINAL SURVEY	
PLOTTED	
NOTE BOOK	
AREAS CHECKED	

DATE	
BY	
ORIGINAL SURVEY	
PLOTTED	
NOTE BOOK	
AREAS CHECKED	

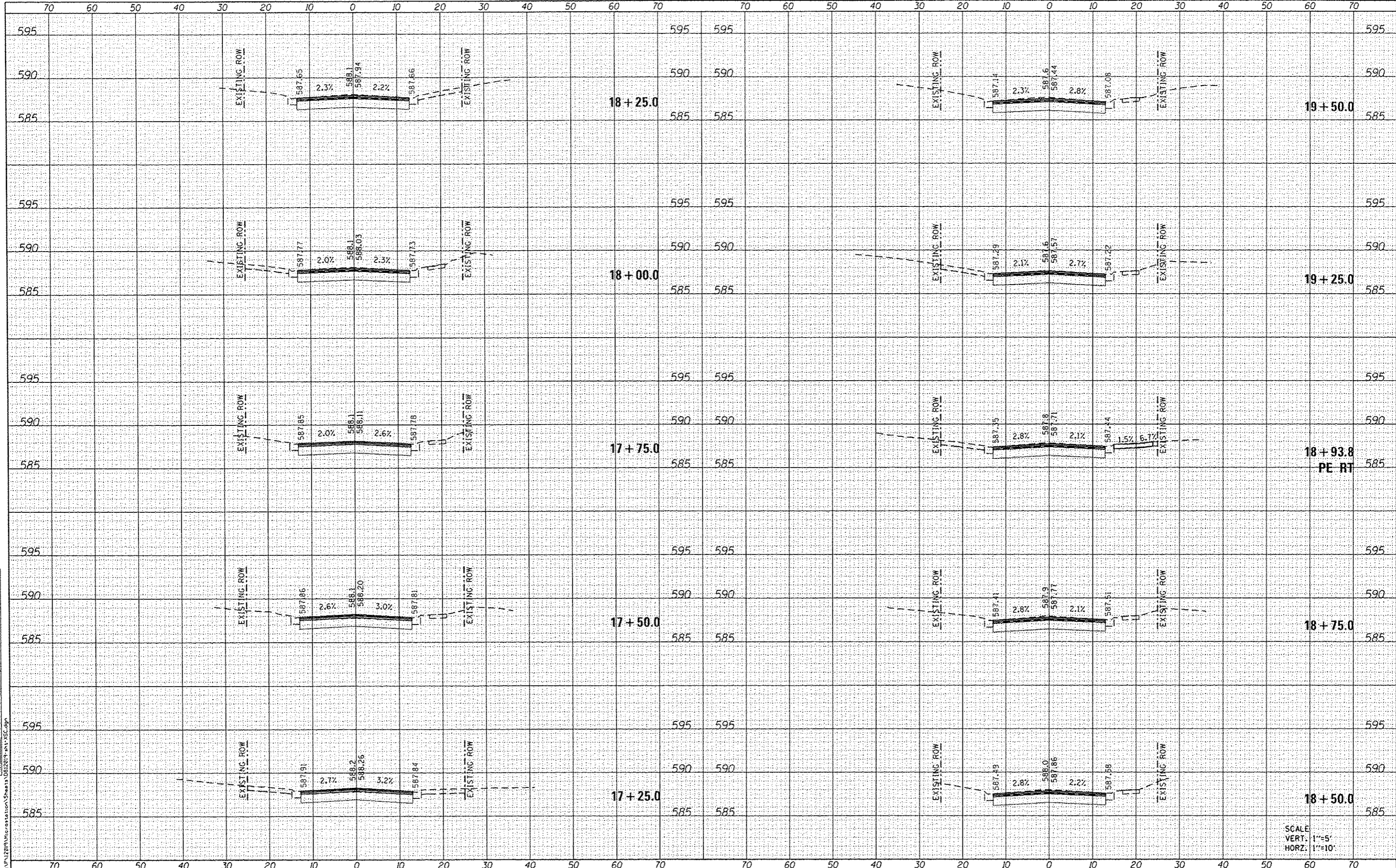
**DATES ASSOCIATES**  
Engineering & Architecture  
ILLINOIS DESIGN FIRM LICENSE NO. 184.001115

USER NAME	brian.hall
DESIGNED	-
DRAWN	-
CHECKED	-
DATE	12/4/2015
REVISED	-
REVISED	-
REVISED	-
REVISED	-

**STATE OF ILLINOIS  
DEPARTMENT OF TRANSPORTATION**

<b>CROSS SECTIONS</b>	
SCALE:	SHEET 3 OF 6 SHEETS
STA. 14+75.0 TO STA. 17+00.0	

F.A.U. RTE.	SECTION	COUNTY	TOTAL SHEETS	SHEET NO.
9328	12-00041-00-R5	ST. CLAIR	24	21
JOSEPH DR RESURFACING			CONTRACT NO. 97613	
ILLINOIS FED. AID PROJECT				



DATE	
BY	
FINAL SURVEY	
SURVEY	
PLOTTED	
TEMPERATURE	
AREAS CHECKED	
NO.	

DATE	
BY	
ORIGINAL SURVEY	
SURVEY	
PLOTTED	
TEMPERATURE	
AREAS CHECKED	
NO.	

FILE NAME = H:\PJ\2019\Information\Sheets\021219-11-XSC.dgn

**GATES ASSOCIATES**  
Engineering + Architecture  
ILLINOIS DESIGN FIRM LICENSE NO. 184.001115

USER NAME =	brianhehl	DESIGNED -	REVISED -
PLAT SCALE =	20.0000' / 1"	DRAWN -	REVISED -
PLAT DATE =	12/4/2015	CHECKED -	REVISED -
		DATE -	REVISED -

**STATE OF ILLINOIS  
DEPARTMENT OF TRANSPORTATION**

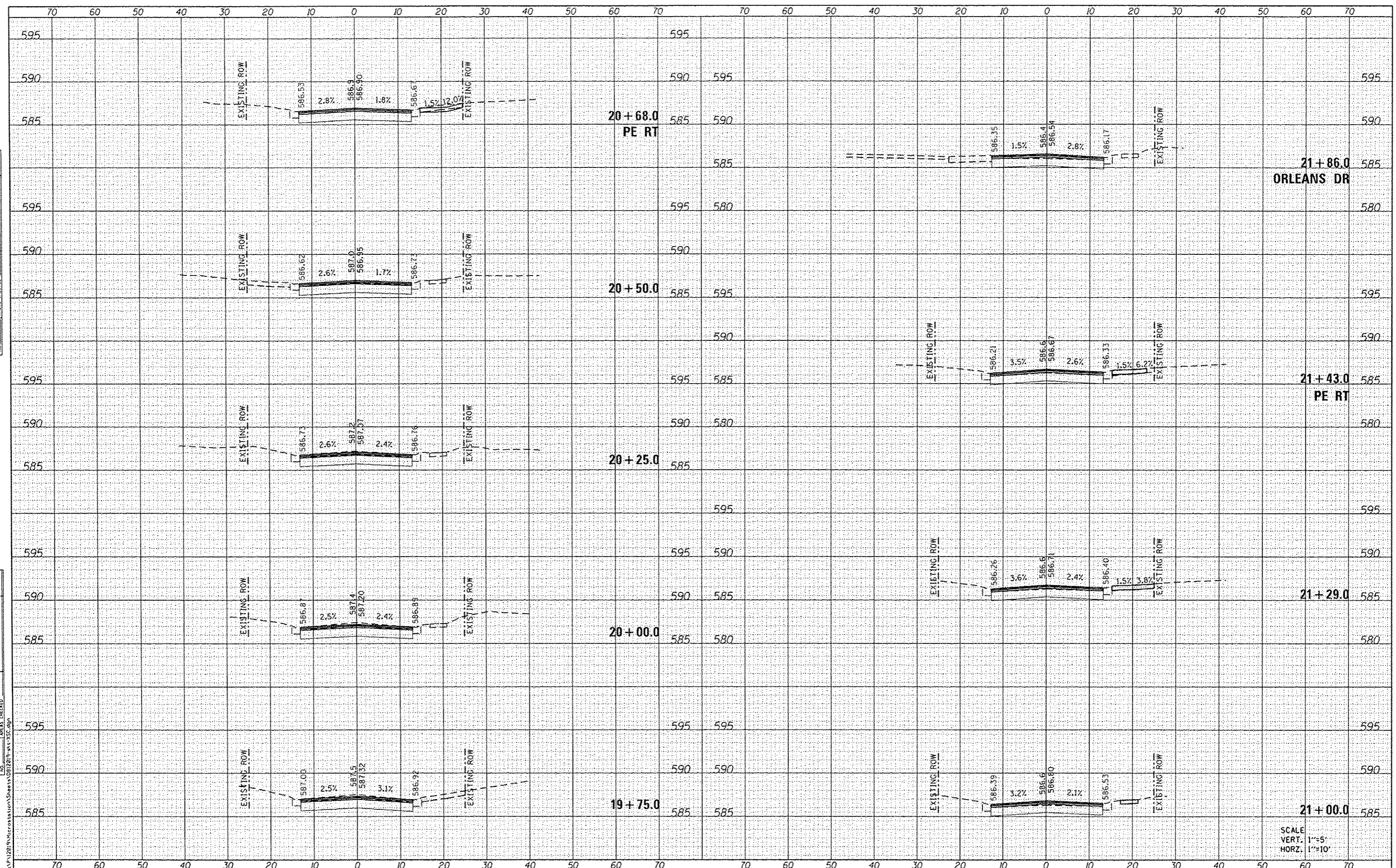
<b>CROSS SECTIONS</b>	
SCALE:	SHEET 4 OF 6 SHEETS STA. 17+25.0 TO STA. 19+50.0

F.A.U. RTE.	SECTION	COUNTY	TOTAL SHEETS	SHEET NO.
9328	12-00041-00-RS	ST. CLAIR	24	22
JOSEPH DR RESURFACING			CONTRACT NO. 97613	
ILLINOIS FED. AID PROJECT				

SCALE  
VERT. 1"=5'  
HORZ. 1"=10'

DATE	
BY	
FINAL SURVEY	
SURVEY	
PLOTTED	
TEMPLATE	
NOTE BOOK	
AREAS CHECKED	
NO.	

DATE	
BY	
ORIGINAL SURVEY	
SURVEY	
PLOTTED	
TEMPLATE	
NOTE BOOK	
AREAS CHECKED	
NO.	



SCALE  
VERT. 1"=5'  
HORZ. 1"=10'

FILE NAME: H:\P\2819\microstation\Sheet12017-11-1501.dgn

**OATES ASSOCIATES**  
Engineering + Architecture  
ILLINOIS DESIGN FIRM LICENSE NO: 184.001115

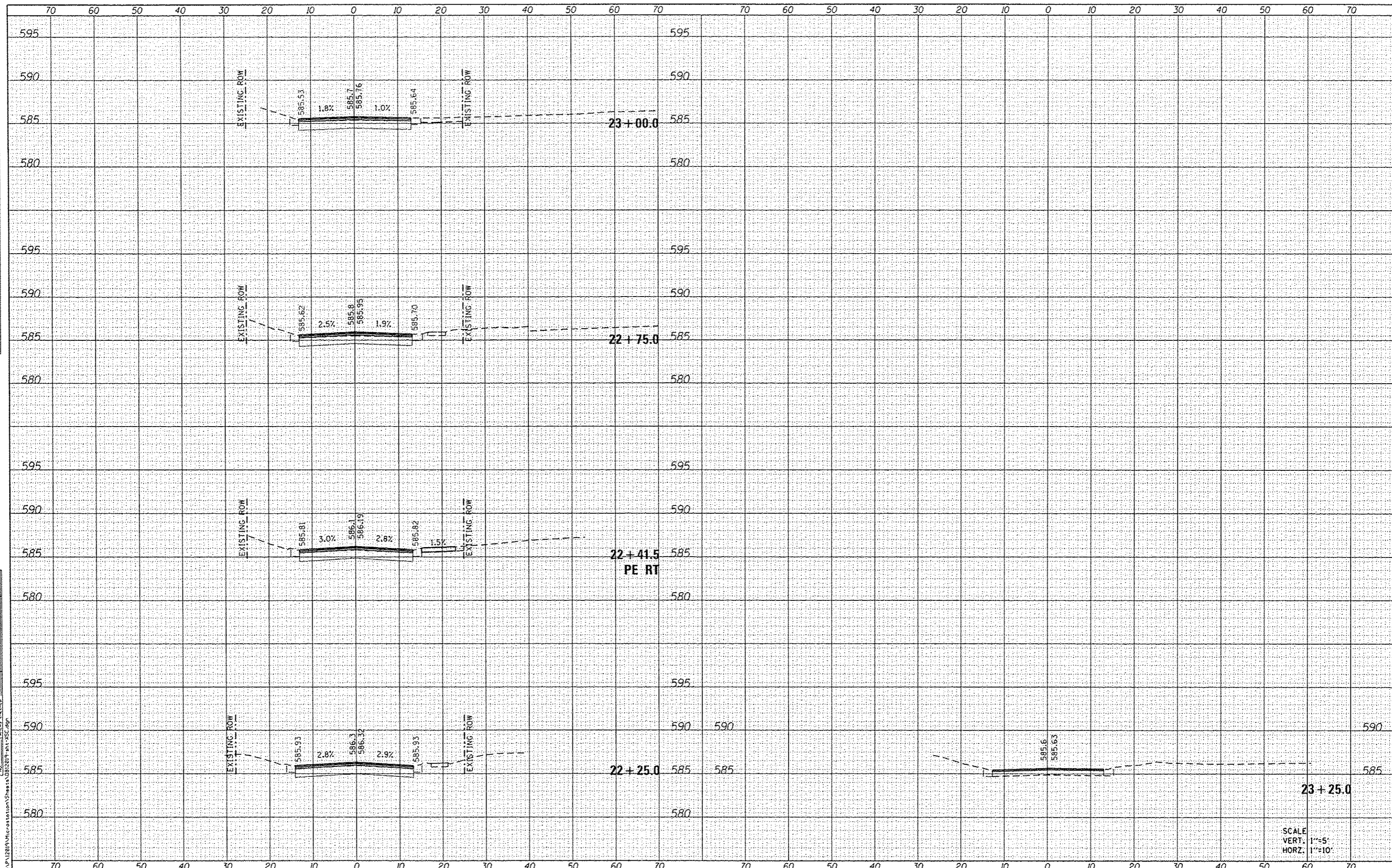
USER NAME = brian.hell	DESIGNED -	REVISED -
PLLOT SCALE = 28.8000 1/16 in.	DRAWN -	REVISED -
PLLOT DATE = 12/4/2015	CHECKED -	REVISED -
	DATE -	REVISED -

**STATE OF ILLINOIS  
DEPARTMENT OF TRANSPORTATION**

**CROSS SECTIONS**

SCALE: SHEET 5 OF 6 SHEETS STA. 19+75.0 TO STA. 21+85.9

F.A.U. RTE. 9328	SECTION 12-00041-00-R5	COUNTY ST. CLAIR	TOTAL SHEETS 24	SHEET NO. 23
JOSEPH DR RESURFACING			CONTRACT NO. 97613	
ILLINOIS FED. AID PROJECT				



DATE	
BY	
DESIGNED	
DRAWN	
CHECKED	
DATE	
USER NAME	
DESIGNED	
DRAWN	
CHECKED	
DATE	
USER NAME	

DATE	
BY	
DESIGNED	
DRAWN	
CHECKED	
DATE	
USER NAME	
DESIGNED	
DRAWN	
CHECKED	
DATE	
USER NAME	


**GATES ASSOCIATES**  
 Engineering + Architecture  
 ILLINOIS DESIGN FIRM LICENSE NO. 184.001115

USER NAME	• brnhoist	DESIGNED	-	REVISED	-
PLOT SCALE	• 20.0000' / 1"	DRAWN	-	REVISED	-
PLOT DATE	• 12/4/2019	CHECKED	-	REVISED	-
		DATE	-	REVISED	-

**STATE OF ILLINOIS**  
**DEPARTMENT OF TRANSPORTATION**

**CROSS SECTIONS**

SCALE:	SHEET 6 OF 6 SHEETS	STA. 22+25.0 TO STA. 23+25.0
--------	---------------------	------------------------------

F.A.U. RTE.	SECTION	COUNTY	TOTAL SHEETS	SHEET NO.
9328	12-00041-00-RS	ST. CLAIR	24	24
JOSEPH DR RESURFACING			CONTRACT NO. 97613	
ILLINOIS FED. AID PROJECT				

SCALE  
 VERT. 1"=5'  
 HORZ. 1"=10'