

TRAVERSE CCS20

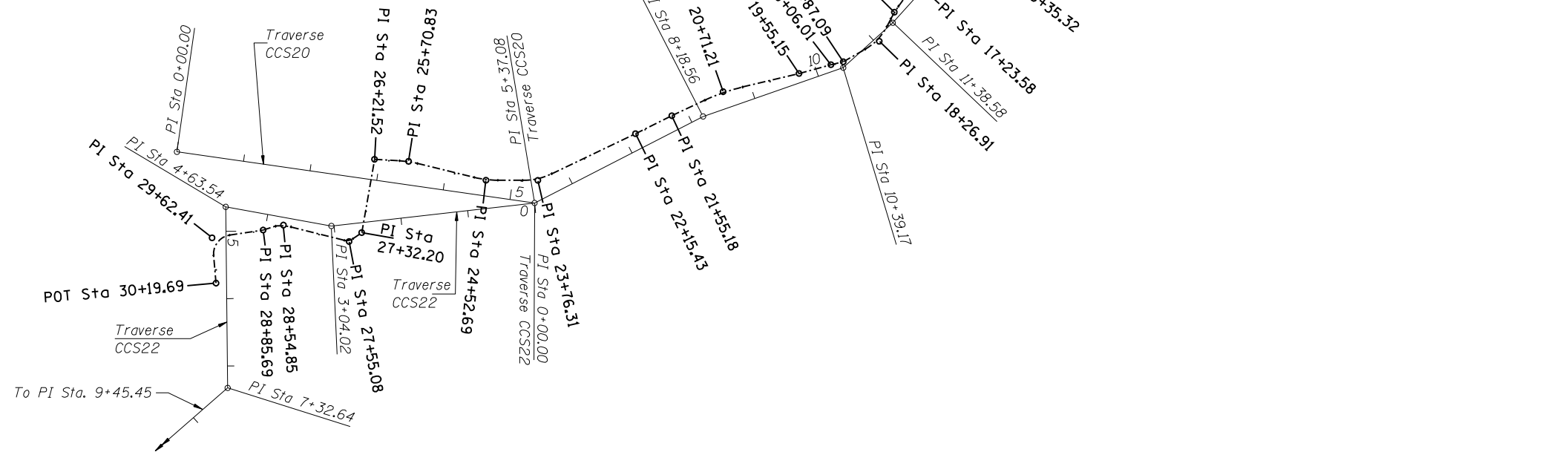
| STATION | COORDINATE | | |
|---------------|------------|----------------|----------------|
| Sta. 0+00.00 | N | 1,927,056.8980 | E 623,675.6780 |
| Sta. 5+37.08 | N | 1,926,980.8520 | E 624,207.3420 |
| Sta. 8+18.56 | N | 1,927,109.3850 | E 624,457.7730 |
| Sta. 10+39.17 | N | 1,927,181.9050 | E 624,666.1180 |
| Sta. 11+38.58 | N | 1,927,248.6450 | E 624,739.7970 |
| Sta. 13+69.88 | N | 1,927,420.3930 | E 624,894.7240 |
| Sta. 17+21.24 | N | 1,927,718.5120 | E 625,080.6820 |
| Sta. 18+61.31 | N | 1,927,857.9610 | E 625,067.5570 |
| Sta. 19+77.55 | N | 1,927,940.0390 | E 625,149.8640 |
| Sta. 22+29.69 | N | 1,928,188.4410 | E 625,193.1070 |
| Sta. 25+02.77 | N | 1,928,343.5950 | E 625,417.8290 |
| Sta. 27+32.31 | N | 1,928,388.6640 | E 625,642.9040 |
| Sta. 31+88.38 | N | 1,928,550.0070 | E 626,069.4820 |
| Sta. 60+58.73 | N | 1,931,360.5390 | E 625,486.5460 |

TRAVERSE CCS22

| STATION | COORDINATE | | |
|--------------|------------|----------------|----------------|
| Sta. 0+00.00 | N | 1,926,980.8520 | E 624,207.3420 |
| Sta. 3+04.02 | N | 1,926,946.6440 | E 623,905.2540 |
| Sta. 4+63.54 | N | 1,926,975.0410 | E 623,748.2800 |
| Sta. 7+32.64 | N | 1,926,705.9530 | E 623,751.1190 |
| Sta. 9+45.45 | N | 1,926,566.3820 | E 623,590.4760 |

CHANNEL CENTERLINE COORDINATES

| PI STATION | COORDINATES | | |
|------------|-------------|----------------|----------------|
| 0+00.00 | N | 1,928,487.6590 | E 625,836.8800 |
| 0+30.80 | N | 1,928,471.3460 | E 625,810.7540 |
| 0+69.28 | N | 1,928,457.5509 | E 625,774.7674 |
| 2+29.09 | N | 1,928,402.5960 | E 625,624.7090 |
| 2+97.60 | N | 1,928,392.1953 | E 625,556.9266 |
| 3+95.10 | N | 1,928,372.5039 | E 625,461.4368 |
| 4+58.97 | N | 1,928,345.9439 | E 625,403.1865 |
| 6+00.65 | N | 1,928,266.5536 | E 625,285.7670 |
| 6+54.47 | N | 1,928,227.3217 | E 625,248.7341 |
| 7+23.14 | N | 1,928,173.4867 | E 625,206.1077 |
| 10+24.68 | N | 1,927,874.9702 | E 625,156.3371 |
| 11+23.64 | N | 1,927,837.0261 | E 625,056.3760 |
| 11+93.03 | N | 1,927,749.7554 | E 625,068.7367 |
| 12+90.25 | N | 1,927,662.6384 | E 625,022.2503 |
| 13+38.01 | N | 1,927,623.8376 | E 624,994.4018 |
| 13+71.93 | N | 1,927,594.6512 | E 624,977.1190 |
| 13+95.02 | N | 1,927,577.4792 | E 624,961.5364 |
| 14+67.43 | N | 1,927,516.8132 | E 624,921.9294 |
| 15+13.01 | N | 1,927,478.2982 | E 624,897.5682 |
| 16+35.32 | N | 1,927,373.9395 | E 624,833.7710 |
| 17+23.58 | N | 1,927,308.8453 | E 624,773.9778 |
| 17+78.23 | N | 1,927,264.4568 | E 624,742.0998 |
| 18+26.91 | N | 1,927,221.2524 | E 624,719.5953 |
| 18+87.09 | N | 1,927,190.7332 | E 624,666.1825 |
| 19+06.01 | N | 1,927,186.3472 | E 624,647.7721 |
| 19+55.15 | N | 1,927,173.3017 | E 624,600.3969 |
| 20+71.21 | N | 1,927,146.2648 | E 624,487.5275 |
| 21+55.18 | N | 1,927,110.5611 | E 624,411.3044 |
| 22+15.43 | N | 1,927,083.7910 | E 624,357.3300 |
| 23+76.31 | N | 1,927,014.4580 | E 624,212.1490 |
| 24+52.69 | N | 1,927,014.6714 | E 624,135.0084 |
| 25+70.83 | N | 1,927,042.7617 | E 624,020.0785 |
| 26+21.52 | N | 1,927,045.8105 | E 623,969.4101 |
| 27+32.20 | N | 1,926,936.7862 | E 623,950.3548 |
| 27+55.08 | N | 1,926,923.6347 | E 623,931.6323 |
| 28+54.85 | N | 1,926,948.0280 | E 623,833.9626 |
| 28+85.69 | N | 1,926,940.6345 | E 623,803.8196 |
| 29+62.41 | N | 1,926,929.0677 | E 623,727.9782 |
| 30+19.69 | N | 1,926,861.7140 | E 623,733.8460 |



O:\Dwr\Proj\Imp\Projects\Crystal Creek\JF\Survey Traverse.dgn
 1/29/2010 11:50:17 AM
 Designed By RLP Checked By JLF
 Drawn By RLP Checked By TMM