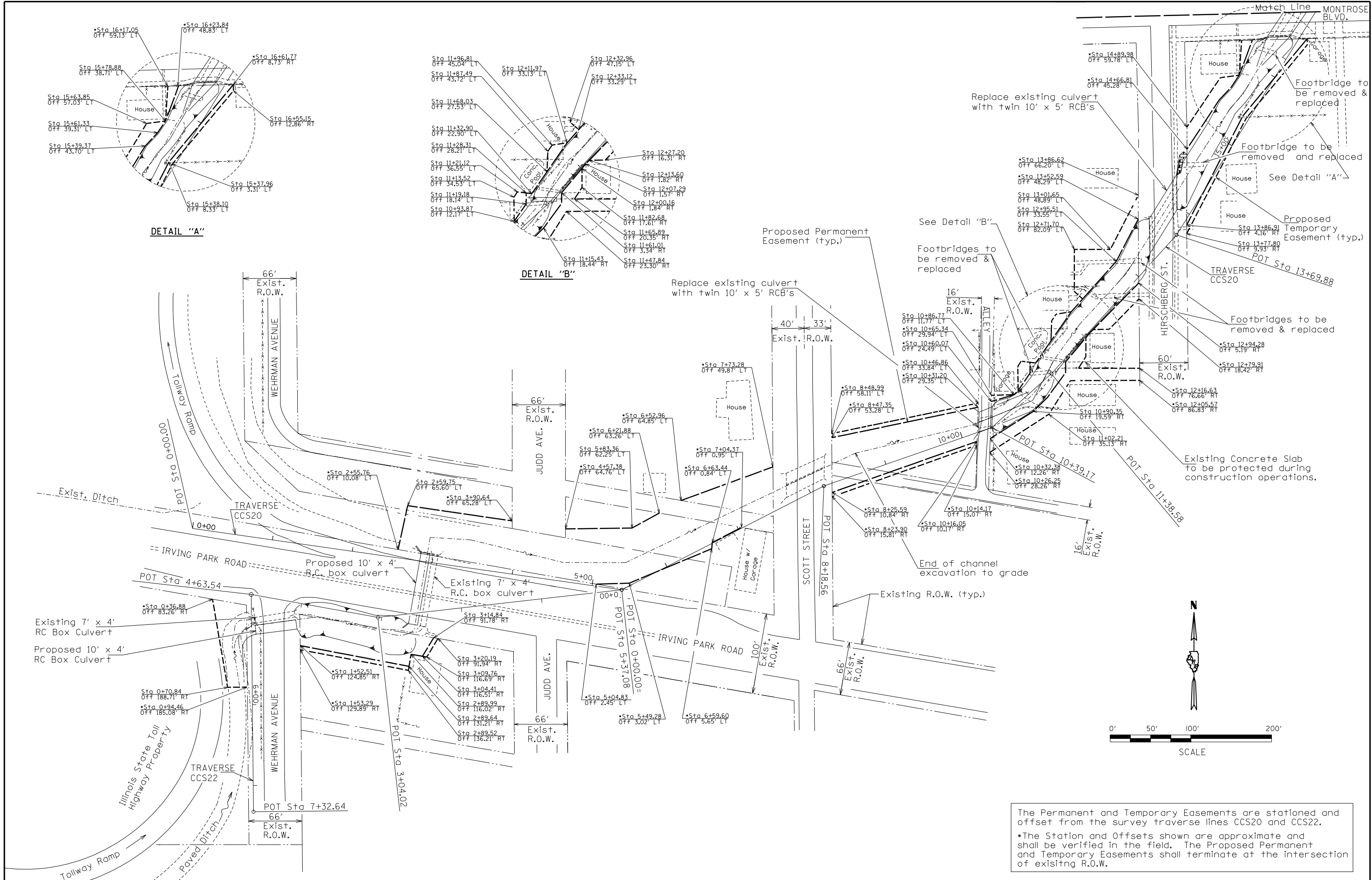


0:\Dwr\Proj\proj\Projects\Crystal Creek\JF\General Plan and Easements 1.dgn  
11:52:04 AM  
1/29/2010  
Designed By RLP Checked By TMM  
Drawn By RLP Checked By TMM



The Permanent and Temporary Easements are stationed and offset from the survey traverse lines CCS20 and CCS22.

\*The Station and Offsets shown are approximate and shall be verified in the field. The Proposed Permanent and Temporary Easements shall terminate at the intersection of existing R.O.W.