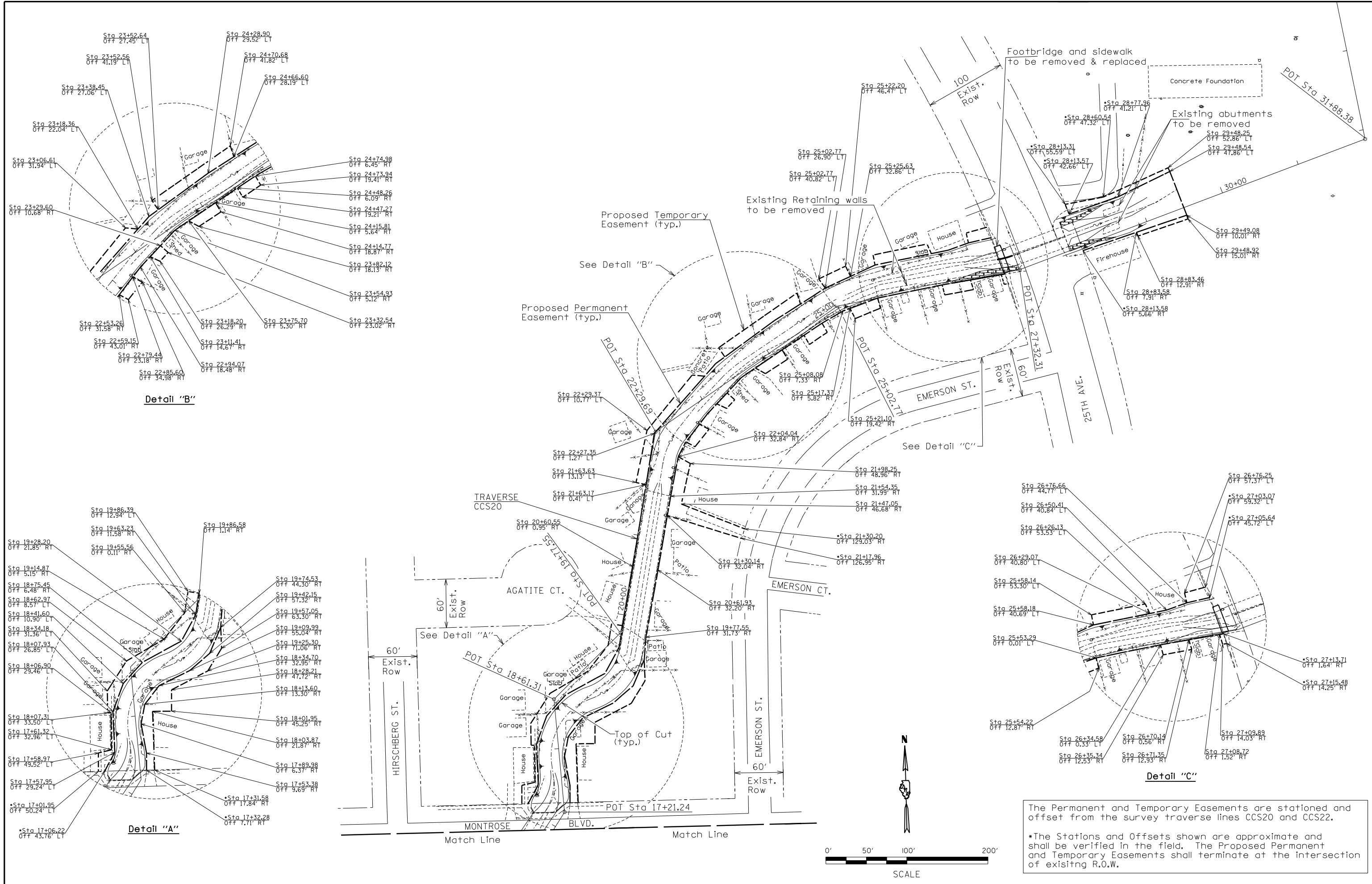


O:\Dwr\Proj\Imp\Projects\Crystal Creek\JUF\General Plan and Easements 2.dgn

11:52:37 AM

1/29/2010

Designed By: RLP  
Checked By: JUF  
Drawn By: RLP  
Checked By: TMM



The Permanent and Temporary Easements are stationed and offset from the survey traverse lines CCS20 and CCS22.

\*The Stations and Offsets shown are approximate and shall be verified in the field. The Proposed Permanent and Temporary Easements shall terminate at the intersection of existing R.O.W.