

PROPOSED CURVE
PI STA. = 6+00.65
 $\Delta = 12^\circ 35' 17''$ (LT)
D = 38' 11" 50"
R = 150.00'
T = 16.54'
L = 32.96'
E = 0.91'
P.C. STA = 5+84.11
P.T. STA = 6+17.07

PROPOSED CURVE
PI STA. = 7+23.14
 $\Delta = 28^\circ 54' 23''$ (LT)
D = 57' 17" 45"
R = 100.00'
T = 25.77'
L = 50.45'
E = 3.27'
P.C. STA = 6+97.36
P.T. STA = 7+47.82

PROPOSED CURVE
PI STA. = 10+24.68
 $\Delta = 59^\circ 44' 53''$ (RT)
D = 76' 23" 40"
R = 75.00'
T = 43.08'
L = 78.21'
E = 11.49'
P.C. STA = 9+81.60
P.T. STA = 10+59.81

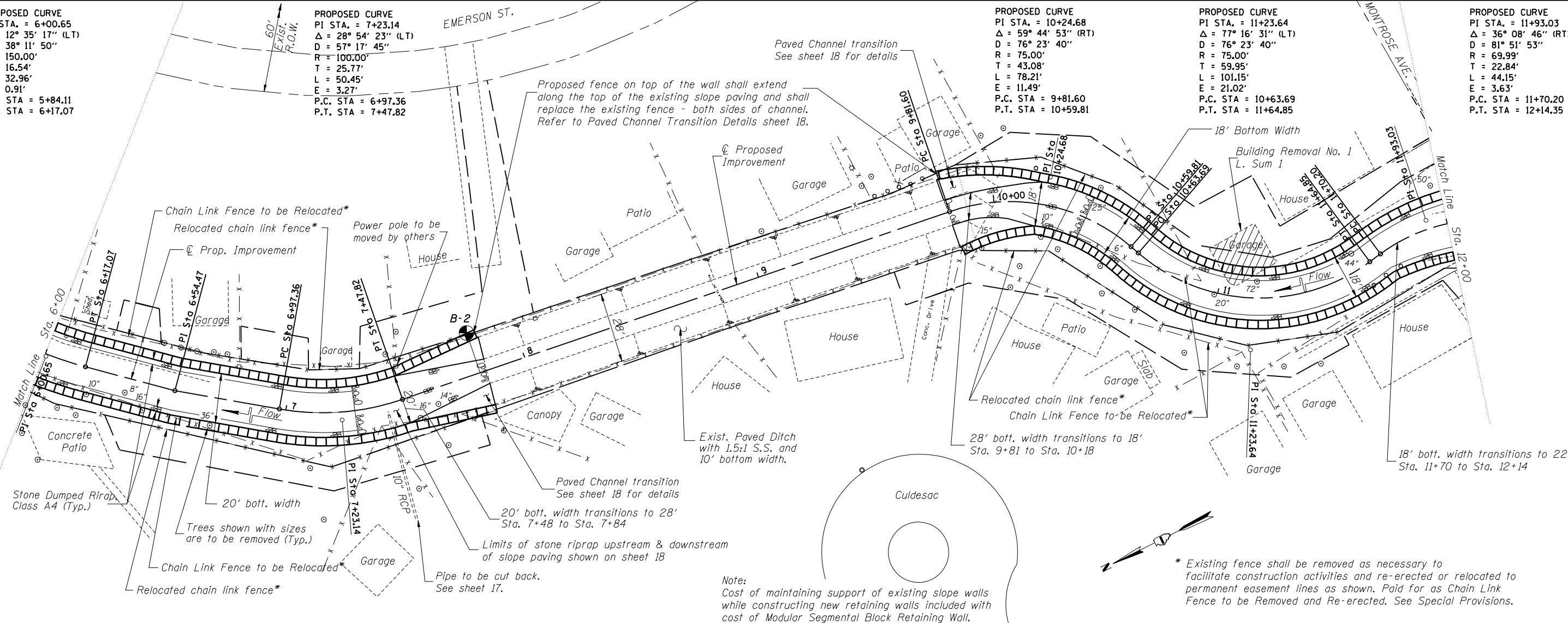
PROPOSED CURVE
PI STA. = 11+23.64
 $\Delta = 77^\circ 16' 31''$ (LT)
D = 76' 23" 40"
R = 75.00'
T = 59.95'
L = 101.15'
E = 21.02'
P.C. STA = 10+63.69
P.T. STA = 11+64.85

PROPOSED CURVE
PI STA. = 11+93.03
 $\Delta = 36^\circ 08' 46''$ (RT)
D = 81' 51" 53"
R = 69.99'
T = 22.84'
L = 44.15'
E = 3.63'
P.C. STA = 11+70.20
P.T. STA = 12+14.35

O:\Dwr\Proj\proj\Crystal Creek\JF\Plan and profile 2.dgn

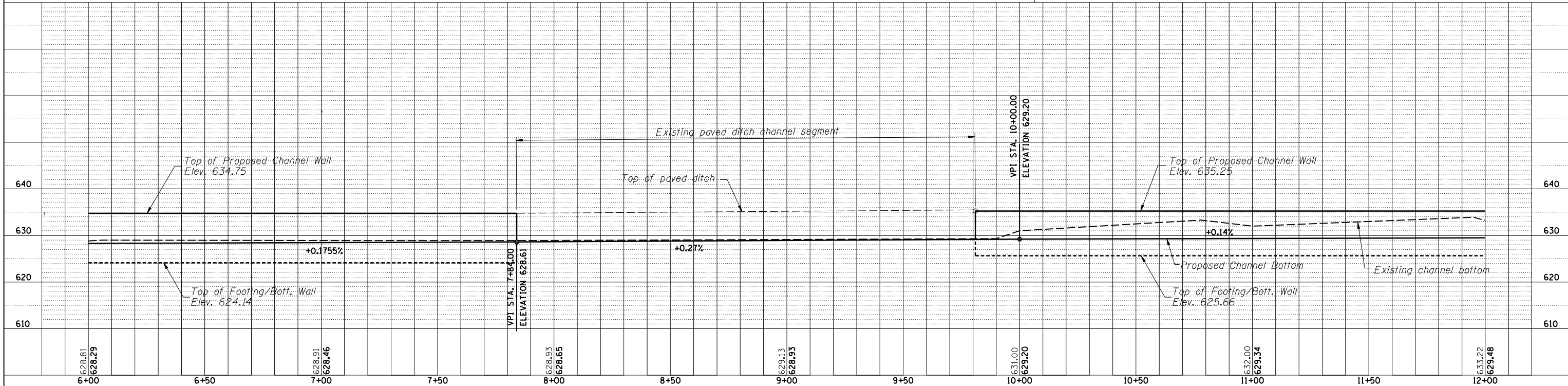
11:53:58 AM

1/29/2010



Note:
Cost of maintaining support of existing slope walls while constructing new retaining walls included with cost of Modular Segmental Block Retaining Wall.

* Existing fence shall be removed as necessary to facilitate construction activities and re-erected or relocated to permanent easement lines as shown. Paid for as Chain Link Fence to be Removed and Re-erected. See Special Provisions.



DESIGNED BY: TMM
DRAWN BY: RLP, JFJ
CHECKED BY: JFJ
CHECKED BY: RLP