

C:\Dwn\Proj\p1\Projects\Crystal Creek\JUF\Plan and profile 3.dgn
11:54:45 AM
1/29/2010

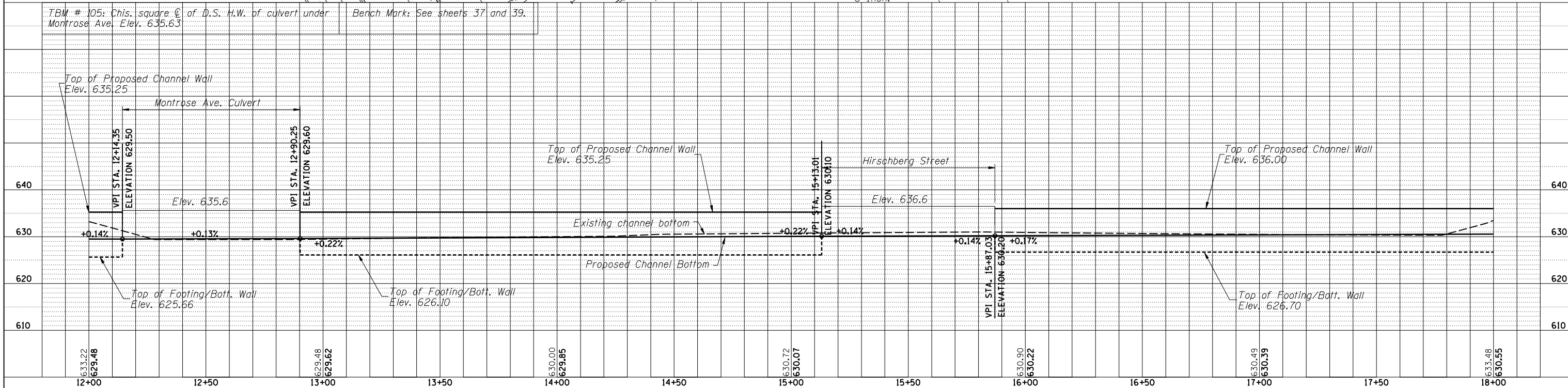
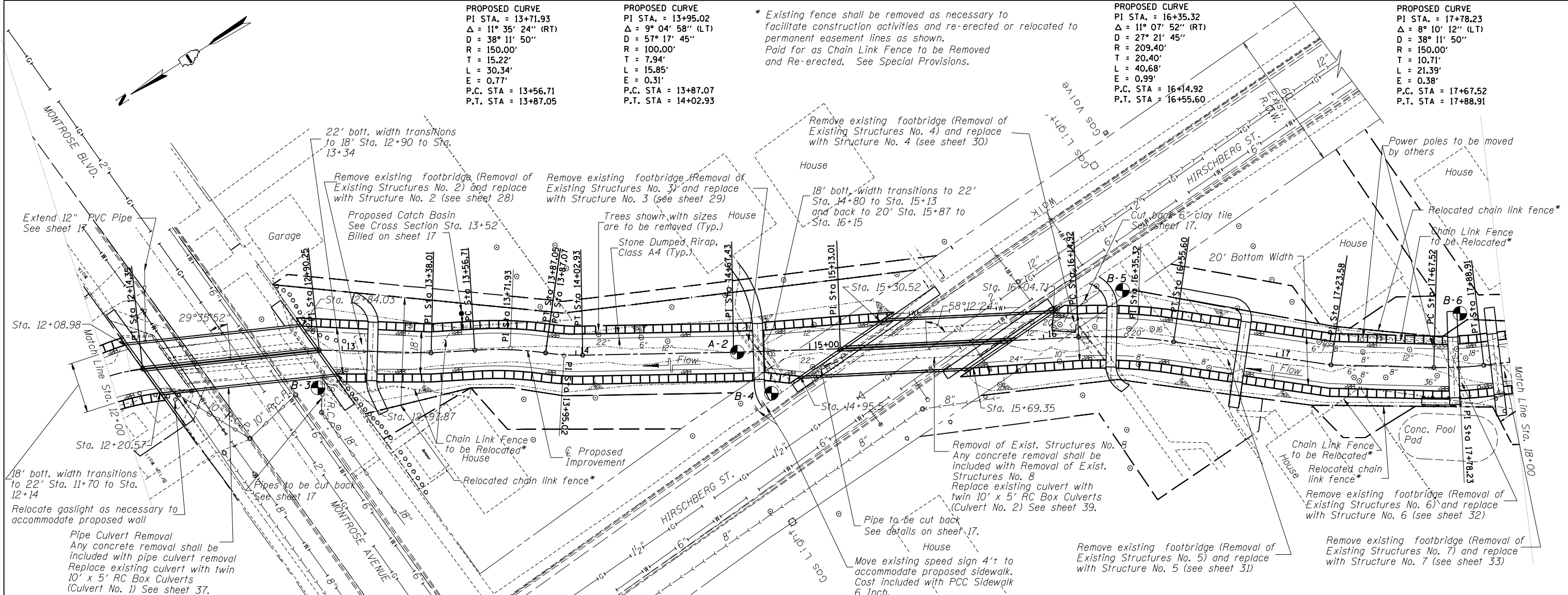
PROPOSED CURVE
PI STA. = 13+71.93
Δ = 11° 35' 24" (RT)
D = 38° 11' 50"
R = 150.00'
T = 15.22'
L = 30.34'
E = 0.77'
P.C. STA = 13+56.71
P.T. STA = 13+87.05

PROPOSED CURVE
PI STA. = 13+95.02
Δ = 9° 04' 58" (LT)
D = 57° 17' 45"
R = 100.00'
T = 7.94'
L = 15.85'
E = 0.31'
P.C. STA = 13+87.07
P.T. STA = 14+02.93

* Existing fence shall be removed as necessary to facilitate construction activities and re-erected or relocated to permanent easement lines as shown. Paid for as Chain Link Fence to be Removed and Re-erected. See Special Provisions.

PROPOSED CURVE
PI STA. = 16+35.32
Δ = 11° 07' 52" (RT)
D = 27° 21' 45"
R = 209.40'
T = 20.40'
L = 40.68'
E = 0.99'
P.C. STA = 16+14.92
P.T. STA = 16+55.60

PROPOSED CURVE
PI STA. = 17+78.23
Δ = 8° 10' 12" (LT)
D = 38° 11' 50"
R = 150.00'
T = 10.71'
L = 21.39'
E = 0.38'
P.C. STA = 17+67.52
P.T. STA = 17+88.91



DESIGNED BY: TMM
DRAWN BY: RLP, JUF
CHECKED BY: JUF, RLP